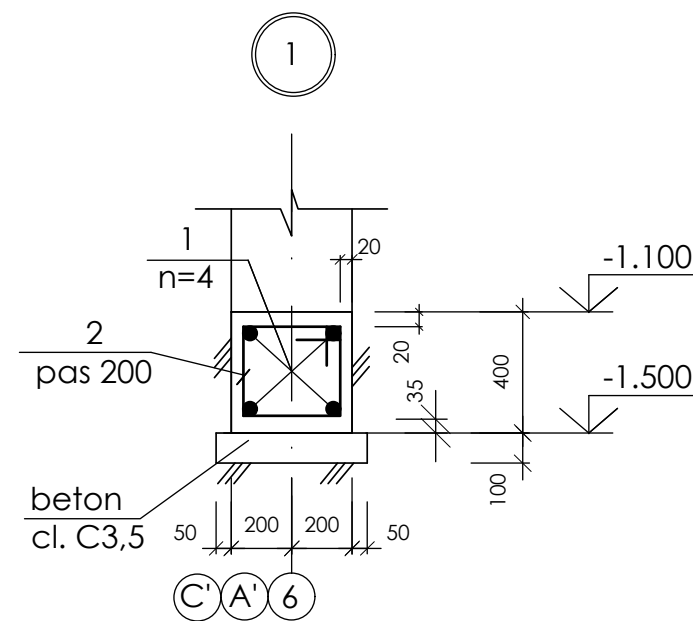
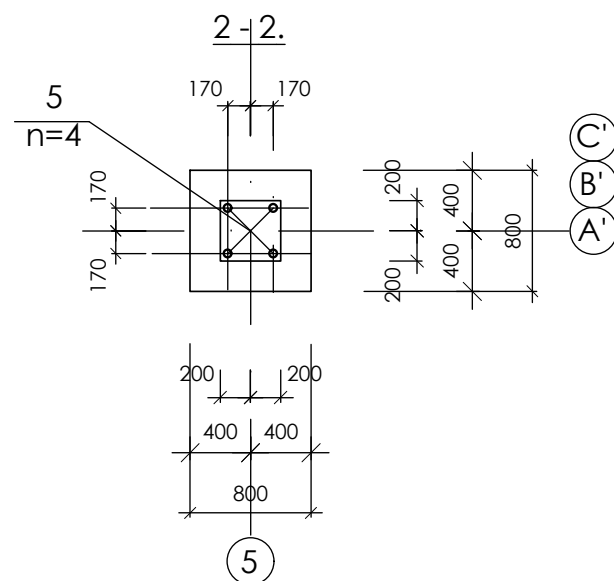
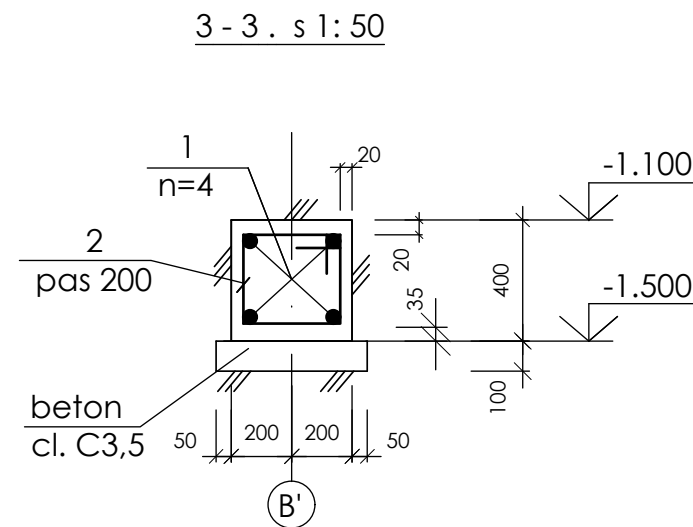
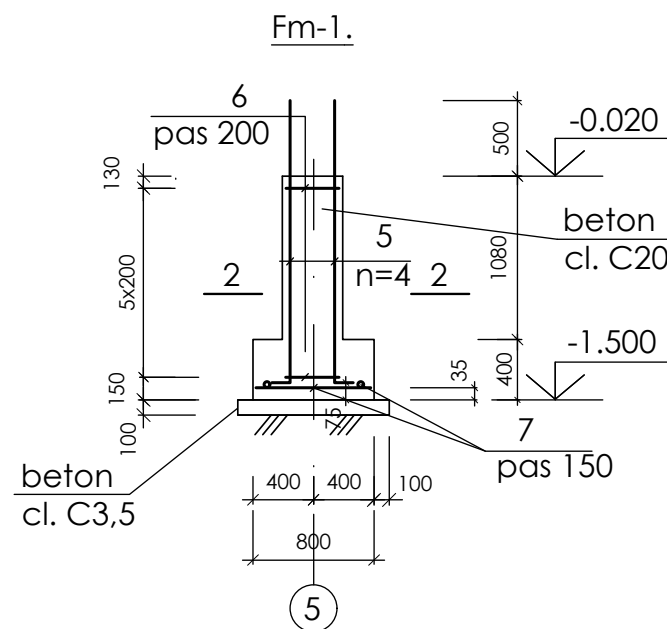


SPECIFICATIJA MATERIALELOR

Pozitia	Marcarea	Denumirea	buc.	Massa un. kg.	Nota
		Fundatia continua (sect. 2-2, 3-3)			
1		Ø14 A-III GOST26633-2012 l _{tot} =81.2m.	-	1.208	98.1kg
2		Ø6A-I GOST26633-2012 l=1530	101	0.34	34.3kg
		Beton clasa C20	3.7		m.c.
		Beton clasa C12.5	8.8		m.c.
		Beton clasa C3.5	1.2		m.c.
		Nodul "A"(sect. b-b, n=3)			
4		Ø16 A-III GOST26633-2012 l=1880	12	2.97	35.64kg
3		Ø6A-I GOST26633-2012 l=1560	21	0.35	7.35kg
		Beton clasa C20	0.50		m.c.
		Fundatia Fm-1 (n=3)			
5		Ø16 A-III GOST26633-2012 l=2055	4	3.25	13.00kg
6		Ø6A-I GOST26633-2012 l=1560	6	0.35	2.10kg
7		Ø10 A-III GOST26633-2012 l=750	10	0.46	4.6 kg
		Beton clasa C20	0.43		m.c.
		Beton clasa C3.5	0.1		m.c.

1. Planşa dată se citeşte cu planşa nr.20



SPECIFICATIJA DETALIILOR

Poz.	Schița	Poz.	Schița
2		3(6)	
4		5	

OBIECTIV NR. - 12.04-D/21-SAC					
Reconstructia cladirii in oficiul medicilor de familie din s.Ruseni, r-ul Edinet					
Mod.	Can.	Foia	Nr.d.	Semnat.	Data
ASP	Mihaila V.				06.21
ISP	Hihlat E.				06.21
Elaborat	Hihlat E.				06.21
Reconstructia cladirii				faza	planse
Fm-1; Nod I; Sectiunea 2-2, 3-3; Specificatia materialelor				PE	21
				SRL "Geo-Cad-Proiect" mun. Balti	

Nr.inve.a.orig. Data si semnatura Nr.inve.schim.