

BORDEROUL DESENELOR SETULUI DE BAZA

Foia	Denumirea	Nota
1	Date generale	
2	Schema amplasarii	
3	Platforma P-1	
4	Schema amplasarii fundatiilor platformei P-1	
5	Plasa PI-1; PI-2	
6	Platforma P-1. Specificata tehnica	
7	Suportul Sup.1	
8	Detaliul metalic Dm1;Dm2	
9	Suportul Sup.2	
10	Suportul Sup.3	
11	Suportul Sup.4	
12	Suportul Sup.5	
13	Suportul Sup.6	
14	Suportul Sup.7	
15	Suportul Sup.8	

1. Proiectul de executie este elaborat in baza sarcinii de proiectare (conform compartimentului "SM")
2. Fundatiile suporturilor de executat cu vibrare intensa pe sol compactat
3. Umplerea cavitatilor de sapatura de executat in straturi cu lut local (hstr.=15÷20cm), compactat pina la densitatea scheletului solului nu mai putin de 1,65t/m<sup>3</sup>
4. Lucrarile de pamint de executat conform cerintelor capitolului NCM F.01.03-2009 "Reguli de executie, controlul calitatii si receptia terenurilor de fundare si fundatiilor"
5. Lucrarile de sudura de executat conform ГОСТ 5264-80 "Ручная дуговая сварка. Соединения сварные. Основные типы, конструктивные элементы и размеры"
6. Inaltimea catetei sudurii de primit egala cu cea mai mica grosime dintre elementele de sudat
7. Constructiile metalice de vopsit de 2 ori cu vopsea XB-125 (TY 6-27-87-98) pe grund XC 010 (ГОСТ 9355-81)
8. Protectia anticorodiva de executat conform capitolului CP E.04.03-2005 "Protectia anticorrosiva a constructiilor si instalatiilor"
9. Betonarea constructiilor de executat conform cerintelor NCM F.02.03-2005 "Executarea, controlul calitatii si receptia lucrarilor din beton si beton armat monolit"
10. Toate lucrarile de executat strict conform cerintelor capitolului NCM A.08.02:2014 "Securitatea si sanatatea muncii in constructii"
11. Dimensiunile marcate cu semnul "\*" de precizat la fata locului

Lista lucrarilor, pentru care e obligatoriu intocmirea actelor ale lucrarilor ascunse:

1. Armarea fundatiilor si suporturilor
2. Betonarea fundatiilor si suporturilor
3. Sudarea constructiilor din metal
4. Masurile anticorodive pentru constructiile din metal

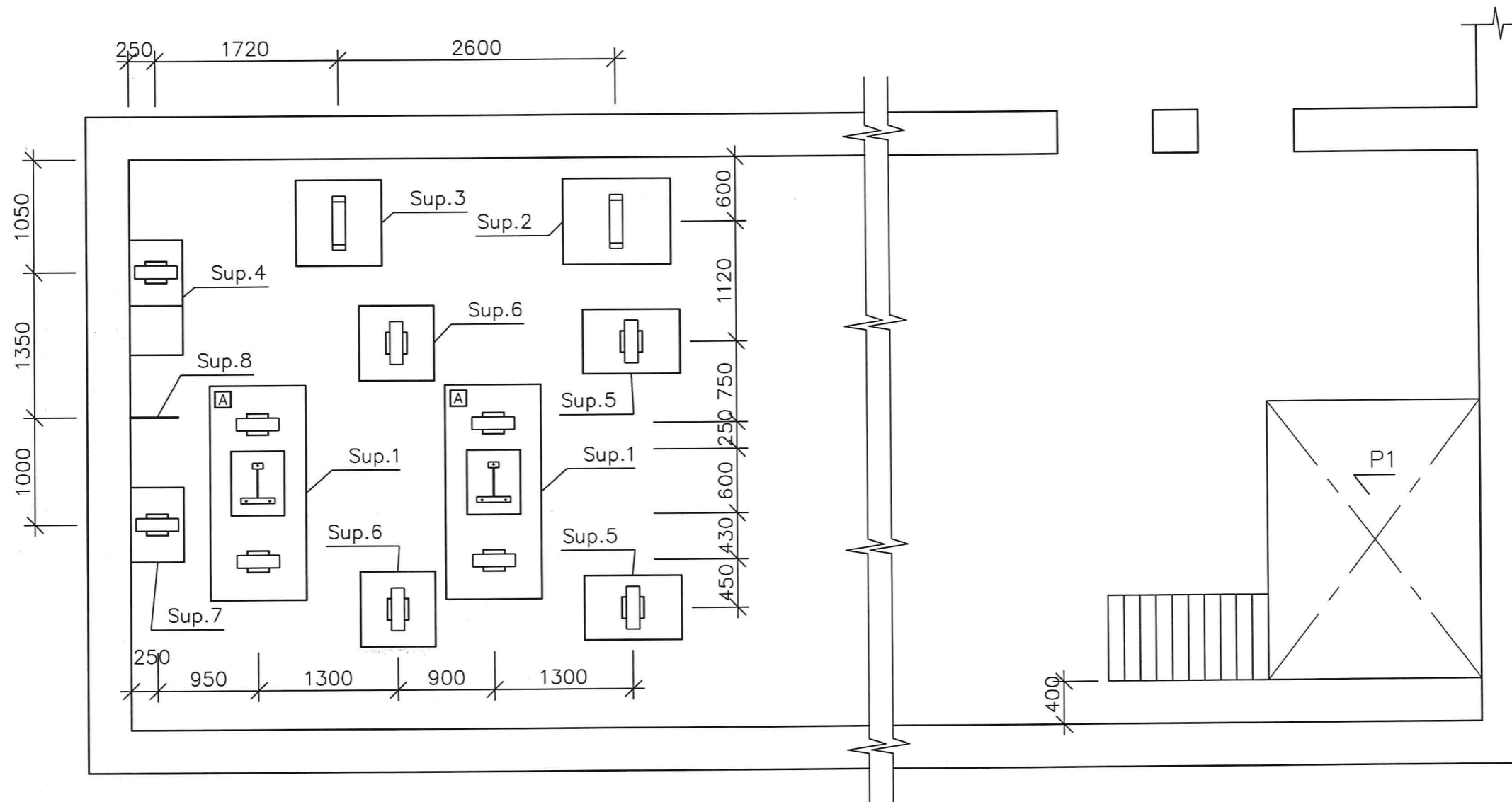
Proiectul este elaborat in conformitate cu normele si regulile in vigoare, si respecta masurile majore prevazute in legea privind calitatea in constructii: A-rezistenta si stabilitate; B-siguranta in exploatare; C-siguranta la foc; D-igiena, sanatatea oamenilor, refacerea si protectia mediului inconjurator; E-izolatie termica, hidrofuga si economie de energie; F-protectie impotriva zgomotului

Constructor principal  /A.Barbaneagra/

CP certificat: Seria 2014-P N 1103 din 18.09.2014				Licenta seria A MMII, N 049375 din 09.09.2015						
103/20-C										
Reconstructia Punctului Termic Central 5082 din str. Banulescu Bodoni 11/1, mun. Chisinau										
modif.	sect.	Plansa	Nr. doc.	Semnat	data	Solutii termomecanice				
Dir.tehnic		Lupan			03.21			Faza	Plansa	Planse
Dir.teh.adj.		Virlan			"			PE	1	15
Sef SPOM		Bugaian			"					
Sef adj. SPOM		Helbeti			"					
Sef SP		Ghersun			"	Date generale				
Inginer		Barbaneagra			"			"Termoelectrica" S.A.		

Nr.de inventar: 13/248  
 Semnatura si Data:  19.04.21  
 In schimb Nr.inv:

Schema amplasarii



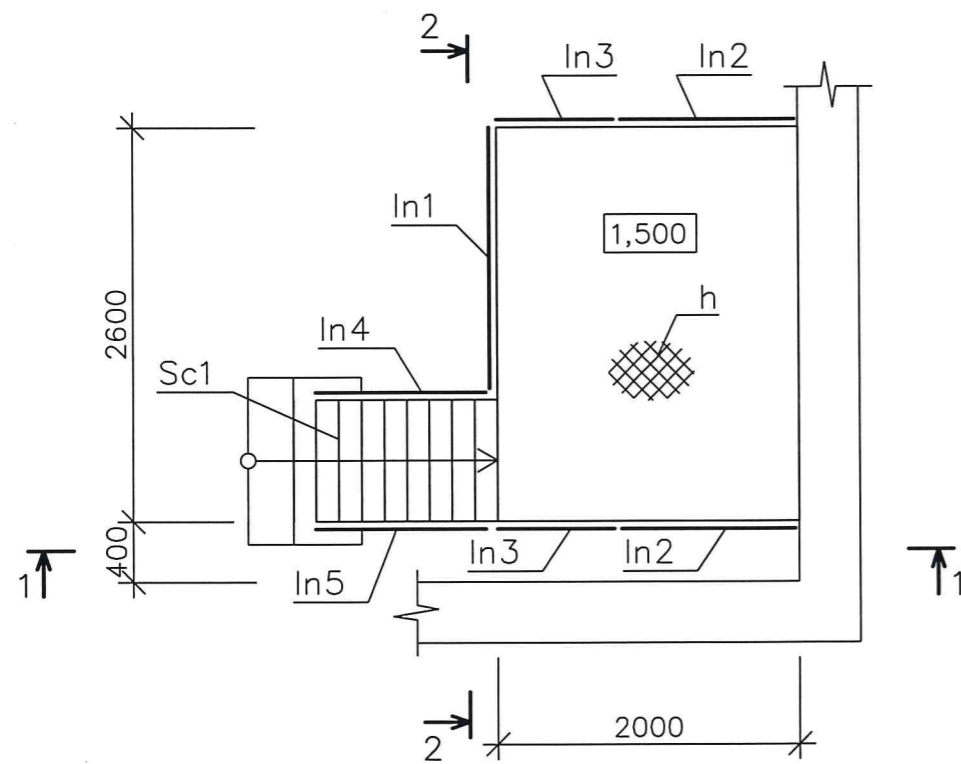
Specificatia la schema amplasarii

Marca Poz.	M A R C A R E A	D E N U M I R E A	Cant.	Masa unit.kg	Nota
P1	plansa 3	Platforma P1	1		
Sup.1	plansa 7	Suportul Sup.1	2		
Sup.2	plansa 9	Suportul Sup.2	1		
Sup.3	plansa 10	Suportul Sup.3	1		
Sup.4	plansa 11	Suportul Sup.4	1		
Sup.5	plansa 12	Suportul Sup.5	2		
Sup.6	plansa 13	Suportul Sup.6	2		
Sup.7	plansa 14	Suportul Sup.7	1		
Sup.8	plansa 15	Suportul Sup.8	1		

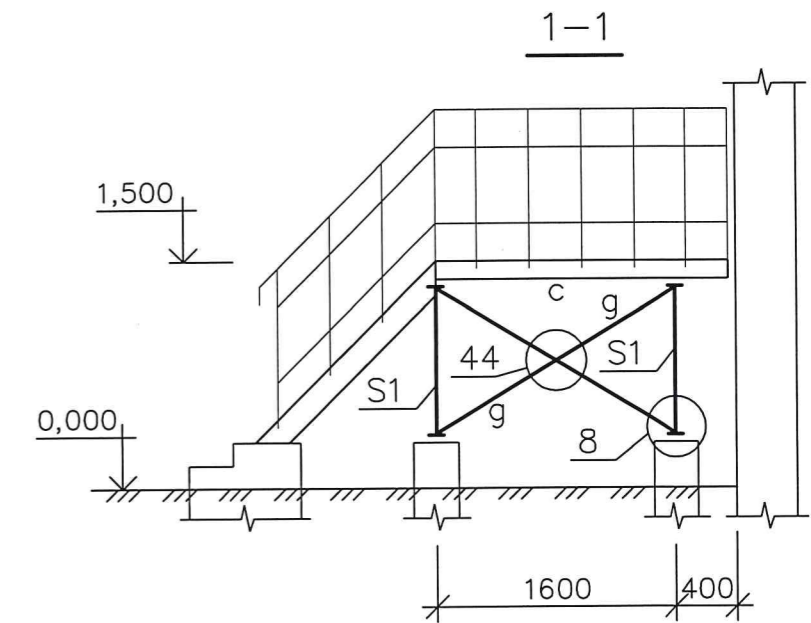
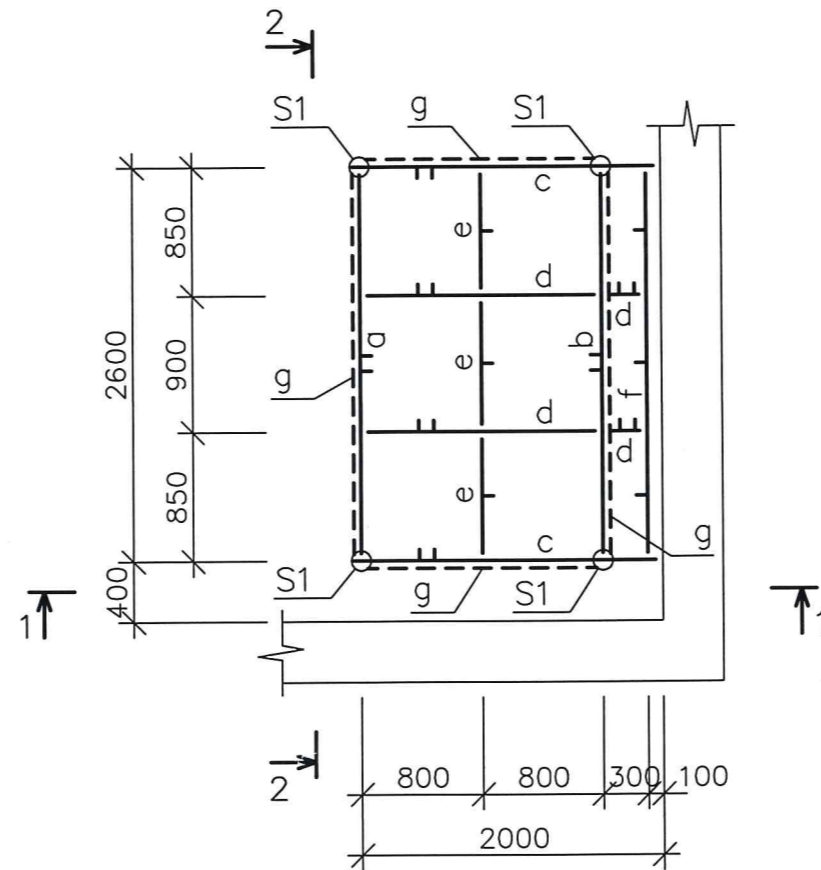
						103/20-C				
						Reconstructia Punctului Termic Central 5082 din str. Banulescu Bodoni 11/1, mun. Chisinau				
modif.	sect.	Plansa	Nr.doc.	Semnat	data	Solutii termomecanice		Faza	Plansa	Planse
								PE	2	
Inginer		Barbaneagra			03.21	Schema amplasarii		"Termoelectrica" S.A.		



Planul platformei P-1

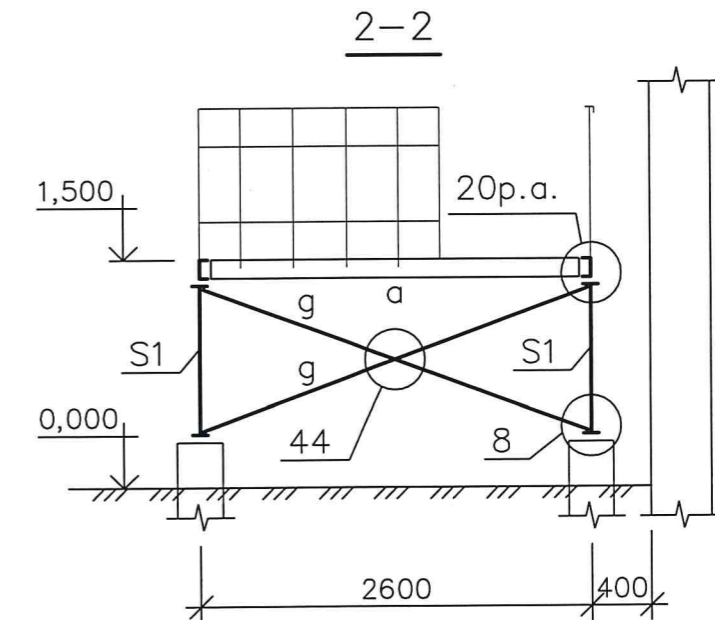


Schema platformei P-1



Specificatia platformei P-1

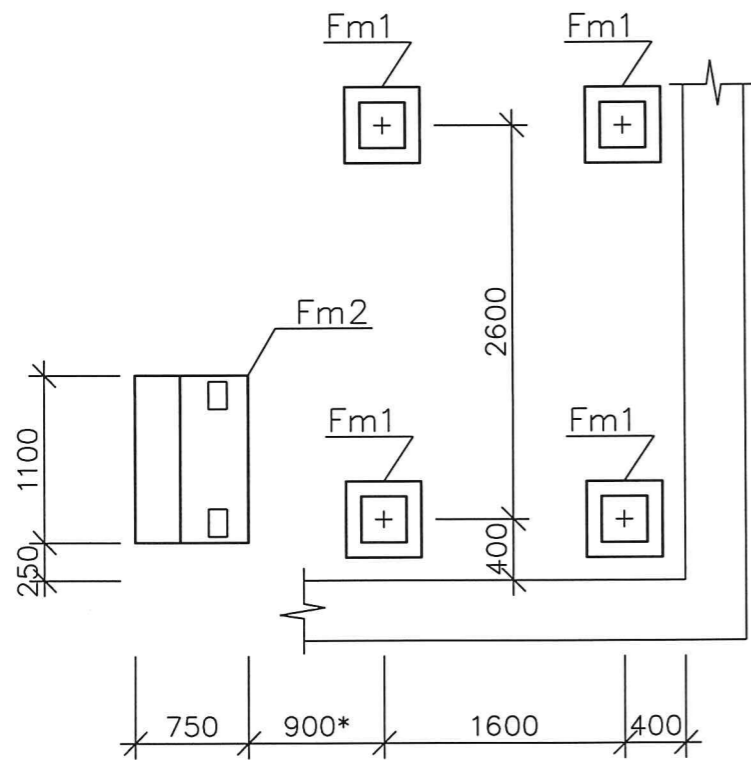
Marca Poz.	M A R C A R E A	D E N U M I R E A	Cant.	Masa unit.kg	Nota
Fm1	plansa 4	Fundatie Fm1	4		
Fm2	la fel	Fundatie Fm2	1		
In1	seria 1.450.3-3, ed.0	Ingradire ОГПМГЭ6-10.18	1	31,2	
In2	la fel	Ingradire ОГПМГЭ6-10.12	2	20,9	
In3	la fel	Ingradire ОГПМГЭ6-10.9	2	17,9	scurtata
In4	la fel	Ingradire ОГЛМЛГ45-10.12	1	15,1	
In5	la fel	Ingradire ОГнМЛГ45-10.12	1	15,1	
Sc1	la fel	Scara МЛГФ45-12.8	1	82,5	



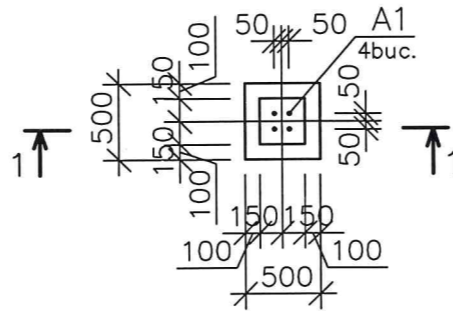
Nodurile sint marcate conform seriei 2.440-1, ed.6, cu exceptia cazurilor indicate

103/20-C					
Reconstructia Punctului Termic Central 5082 din str. Banulescu Bodoni 11/1, mun. Chisinau					
modif.	sect.	Plansa	Nr.doc.	Semnat	data
Solutii termomecanice				Faza	Plansa
				PE	3
Platforma P-1				"Termoelectrica" S.A.	
Inginer	Barbaneagra				03.21

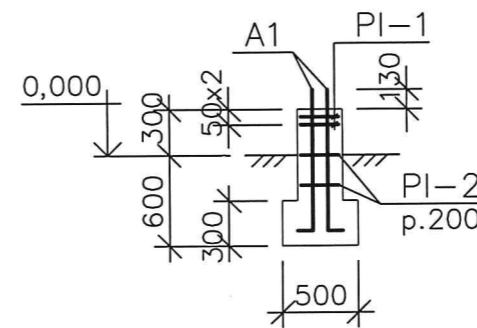
Schema amplasarii fundatiilor platformei P-1



Fm1



1-1



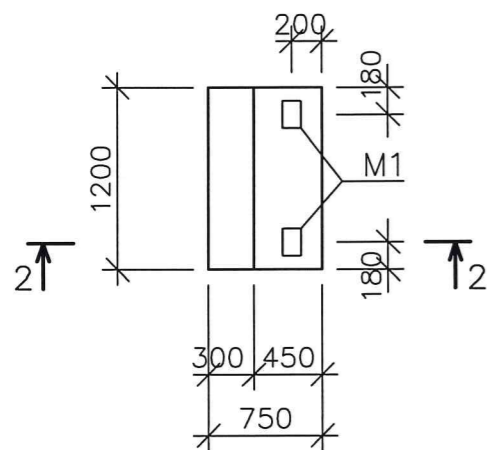
Borderoul elementelor

Poz.	Schita
A1	

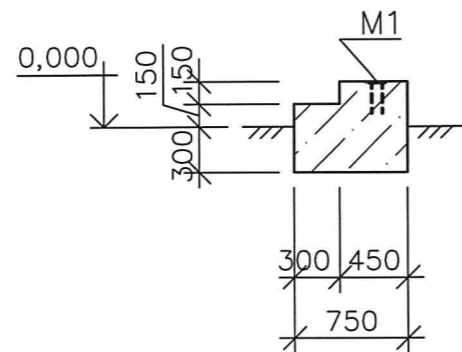
Specificatia fundatiilor

Marca Poz.	M A R C A R E A	D E N U M I R E A	Cant.	Masa unit.kg	Nota
<u>Fm1</u>					
A1	plansa data	A-I-20, ГOCT5781-82, L=1060	4	2,62	
PI-1	plansa 5	Plasa PI-1	2	0,36	
PI-2	la fel	Plasa PI-2	2	0,18	
<u>Materiale:</u>					
		Beton clasa B15	0,13		M3
<u>Fm2</u>					
M1	seria 3.400-6/76, p.19	Inglobata MI1-18	2	1,7	
<u>Materiale:</u>					
		Beton clasa B15	0,45		M3

Fm2



2-2

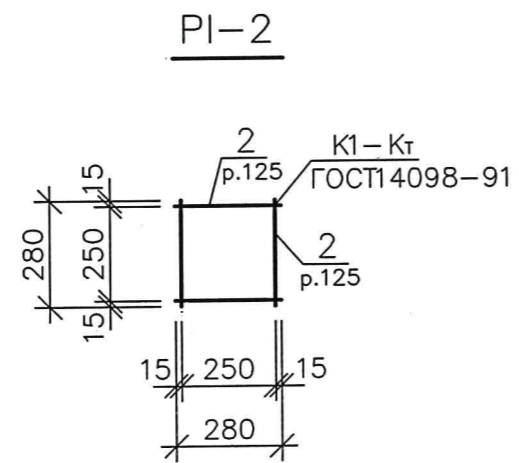
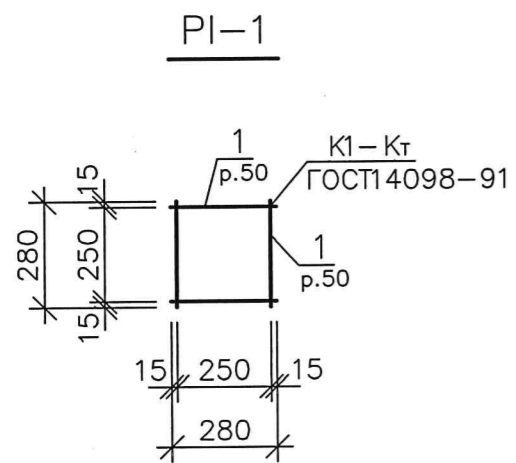


Borderoul consumului de metal la un element, kg

Element de marca	Articole armatura		Articole inglobate						De tot	
	Clasa armaturii			Laminare						
	Bp-I		A-I		A-III		C235			
	ГОСТ 6724-80		ГОСТ 5781-82			ГОСТ 103-76				
	Ø4	Total	Ø20	Total	Ø8	Total	-8	Total		
Fm1	1,08	1,08	10,48	10,48					11,56	
Fm2					0,6	0,6	2,8	2,8	3,4	

modif.	sect.	Plansa	Nr.doc.	Semnat	data	103/20-C					
						Reconstructia Punctului Termic Central 5082 din str. Banulescu Bodoni 11/1, mun. Chisinau					
						Solutii termomecanice			Faza	Plansa	Planse
									PE	4	
Inginer	Barbaneagra				03.21	Schema amplasarii fundatiilor platformei P-1			"Termoelectrica" S.A.		



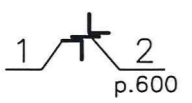





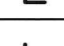
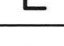


Specificatia plaselor

Marca Poz.	M A R C A R E A	D E N U M I R E A	Cant.	Masa unit.kg	Nota
		<u>Plasa PI-1</u>			
1	plansa data	Bp-I-4, ГOCT 6724-80, L=280	12	0,03	
		<u>Plasa PI-2</u>			
2	plansa data	Bp-I-4, ГOCT 6724-80, L=280	6	0,03	

103/20-C					
Reconstructia Punctului Termic Central 5082 din str. Banulescu Bodoni 11/1, mun. Chisinau					
modif.	sect.	Plansa	Nr.doc.	Semnat	data
Solutii termomecanice			Faza	Plansa	Planse
			PE	5	
Inginer	Barbaneagra				03.21
Plasa PI-1; PI-2			"Termoelectrica" S.A.		

Borderoul elementelor

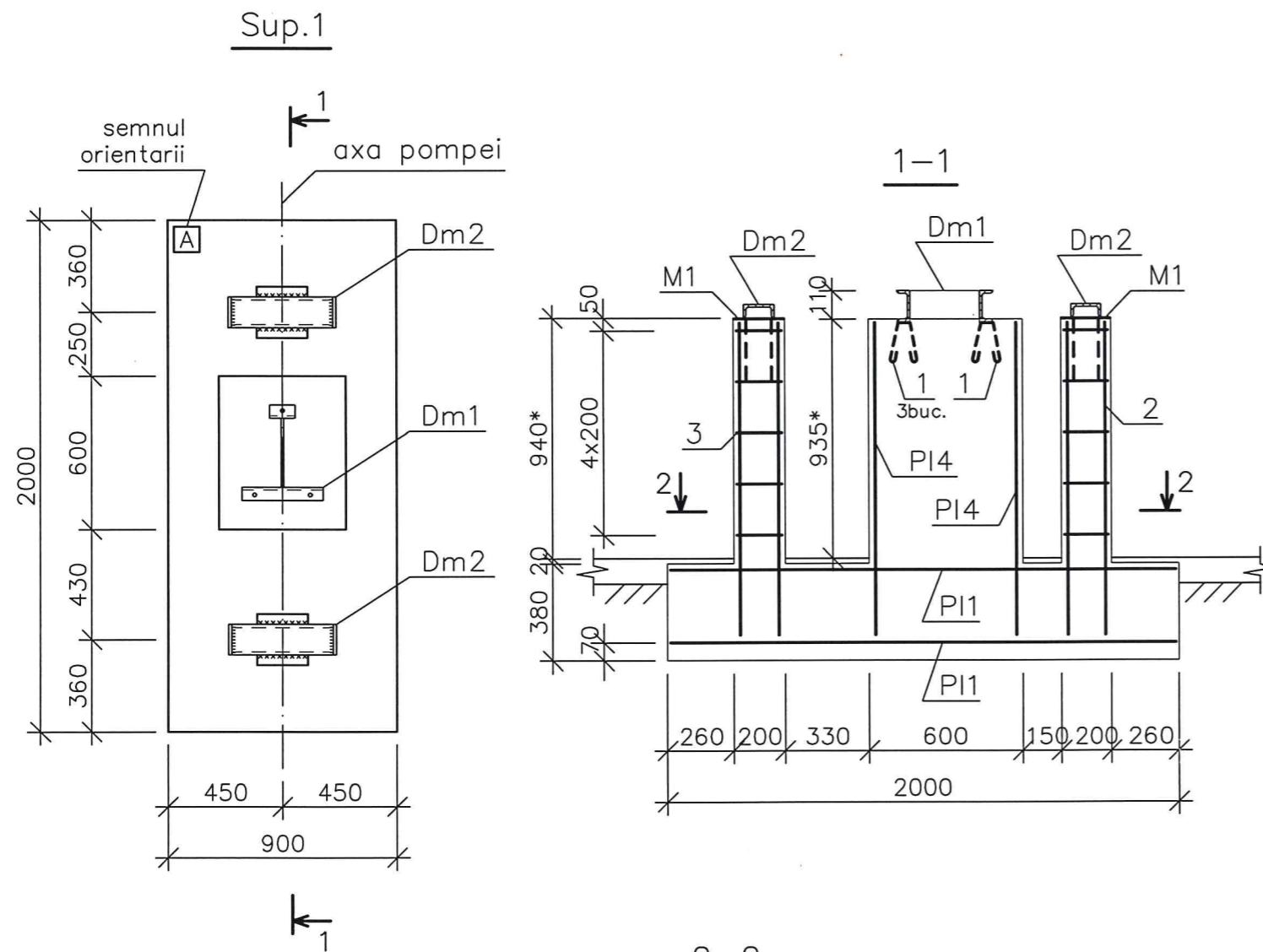
Marca	Denumirea			Reactii de suport			Grupa constr.	Marca metalului	Nota
	Schita	poz.	Compozitie	M <sub>tpm</sub>	N <sub>tp</sub>	Q <sub>tp</sub>			
S1		1	2L63x5	constructiv				C235	
		2	—8	constructiv				C235	
a			C12Y	deviere verticala				C235	
b			C12Y	deviere verticala				C235	
c			C12Y	deviere verticala				C235	
d			C12Y	deviere verticala				C235	
e			L50x5	constructiv				C235	
f			L50x5	constructiv				C235	
g			L50x5	constructiv				C235	
h	—		—5 rifting	constructiv				C235	

Specificatia tehnica a metalului

N n/n	DENUMIREA	profil	Marca metalului si GOCT	Masa totala,kg	
				P-1	
1	Profil U GOCT 8240-97	C12Y	C 235 GOCT 27772-88	137,3	
2	Cornier GOCT 8509-93	L50x5		90,5	
3		L63x5		39,6	
4		—8		50,3	
5	Benzi de otel GOCT 103-76	—12		27,2	
6		—5 rifting		220,0	
Total:				564,9	
Metal de sudura 1%:				5,7	
Metal fara evidenta 3%:				17,1	
De tot:				587,7	

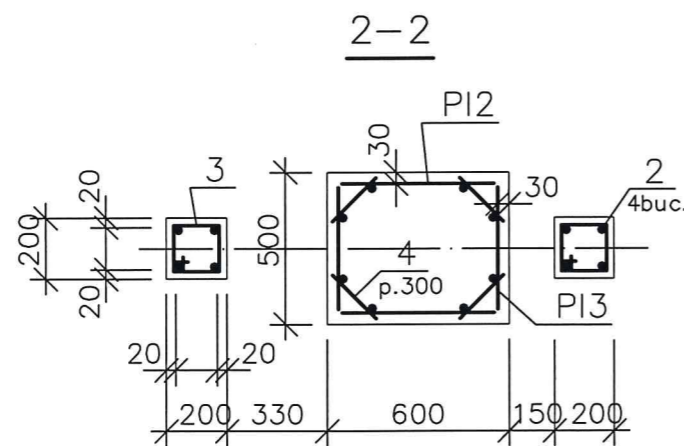
						103/20-C				
						Reconstructia Punctului Termic Central 5082 din str. Banulescu Bodoni 11/1, mun. Chisinau				
modif.	sect.	Plansa	Nr.doc.	Semnat	data	Solutii termomecanice		Faza	Plansa	Planse
								PE	6	
Inginer Barbaneagra						Platforma P-1. Specificata tehnica		"Termoelectrica" S.A.		





Specificatia suportului Sup.1

Marca Poz.	M A R C A R E A	D E N U M I R E A	Cant.	Masa unit.kg	Nota
Dm1	plansa 8	Detaliu metalic Dm1	1	5,77	
Dm2	la fel	Detaliu metalic Dm2	2	4,84	
PI1	ГОСТ 23279-85	4C $\frac{8AIII-200}{8AIII-200}$ 85x195 $\frac{75}{25}$	2	7,21	
PI2	la fel	4C $\frac{10AIII-300}{6AI-300}$ 50x125 $\frac{25+325}{100}$	2	2,0	
PI3	la fel	4C $\frac{10AIII-200}{6AI-300}$ 40x125 $\frac{25+325}{100}$	2	1,91	
1	plansa data	A-I-8, ГОСТ5781-82, L=510	4	0,21	
2	la fel	A-III-10, ГОСТ5781-82, L=1250	8	0,78	
3	la fel	A-I-6, ГОСТ5781-82, L=790	10	0,18	
4	la fel	A-I-6, ГОСТ5781-82, L=315	16	0,07	
M1	s.3.400-6/76, c.19	Inglobata MI1-24	2	2,3	
<u>Materiale:</u>					
		Beton clasa B15	1,05		M3



Borderoul elementelor

Poz.	Schita
1	
3	
4	

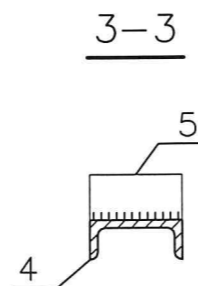
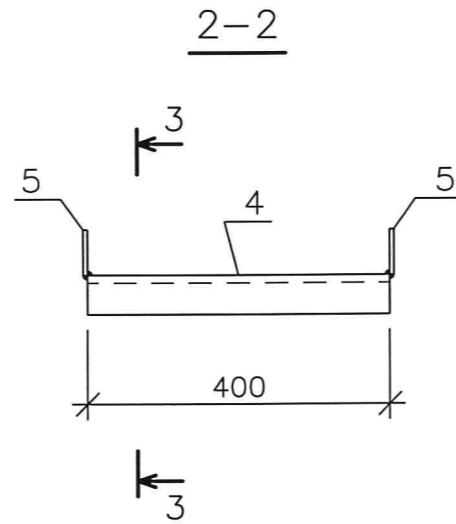
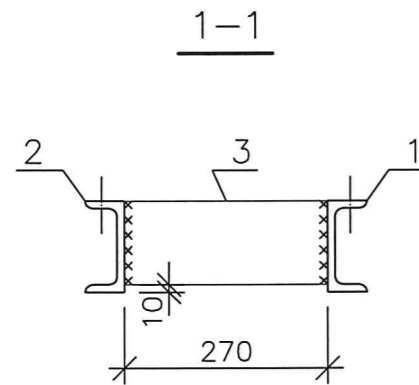
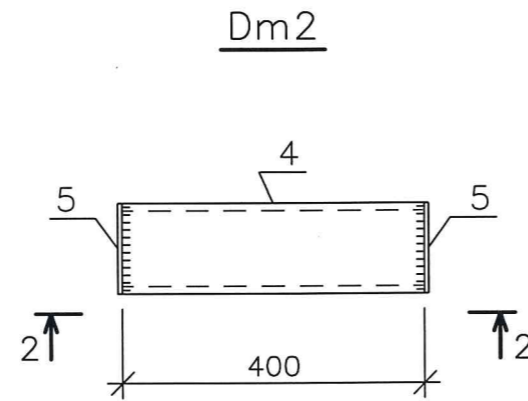
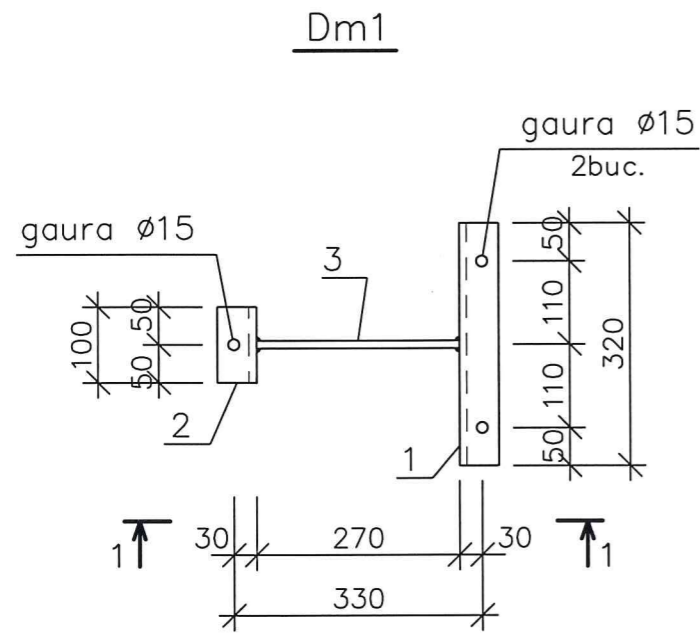
Borderoul consumului de metal la un element, kg

Element de marca	Articole armatura						Articole inglobate						De tot
	Clasa armaturii												
	A-I			A-III			C235						
	ГОСТ 5781-82						ГОСТ 103-76						
	∅6	∅8	Total	∅8	∅10	Total	∅8		Total	-6		Total	
Sup.1	4,54	0,84	5,38	14,42	12,44	26,86	0,8		0,8	3,8		3,8	36,84

modif.	sect.	Plansa	Nr.doc.	Semnat	data	103/20-C				
						Reconstructia Punctului Termic Central 5082 din str. Banulescu Bodoni 11/1, mun. Chisinau				
						Solutii termomecanice		Faza	Plansa	Planse
								PE	7	
Inginer		Barbaneagra			03.21	Suportul Sup.1		"Termoelectrica" S.A.		

Specificatia detaliilor metalice

Marca Poz.	M A R C A R E A	D E N U M I R E A	Cant.	Masa unit.kg	Nota
		<u>Dm1</u>			
1	plansa data	[12, ГОСТ8240-89 L=320	1	3,33	
2	la fel	[12, ГОСТ8240-89 L=100	1	1,04	
3	la fel	-6x110x270, ГОСТ103-76	1	1,40	
		<u>Dm2</u>			
4	plansa data	[12, ГОСТ8240-89 L=400	1	4,16	
5	la fel	-6x60x120, ГОСТ103-76	2	0,34	

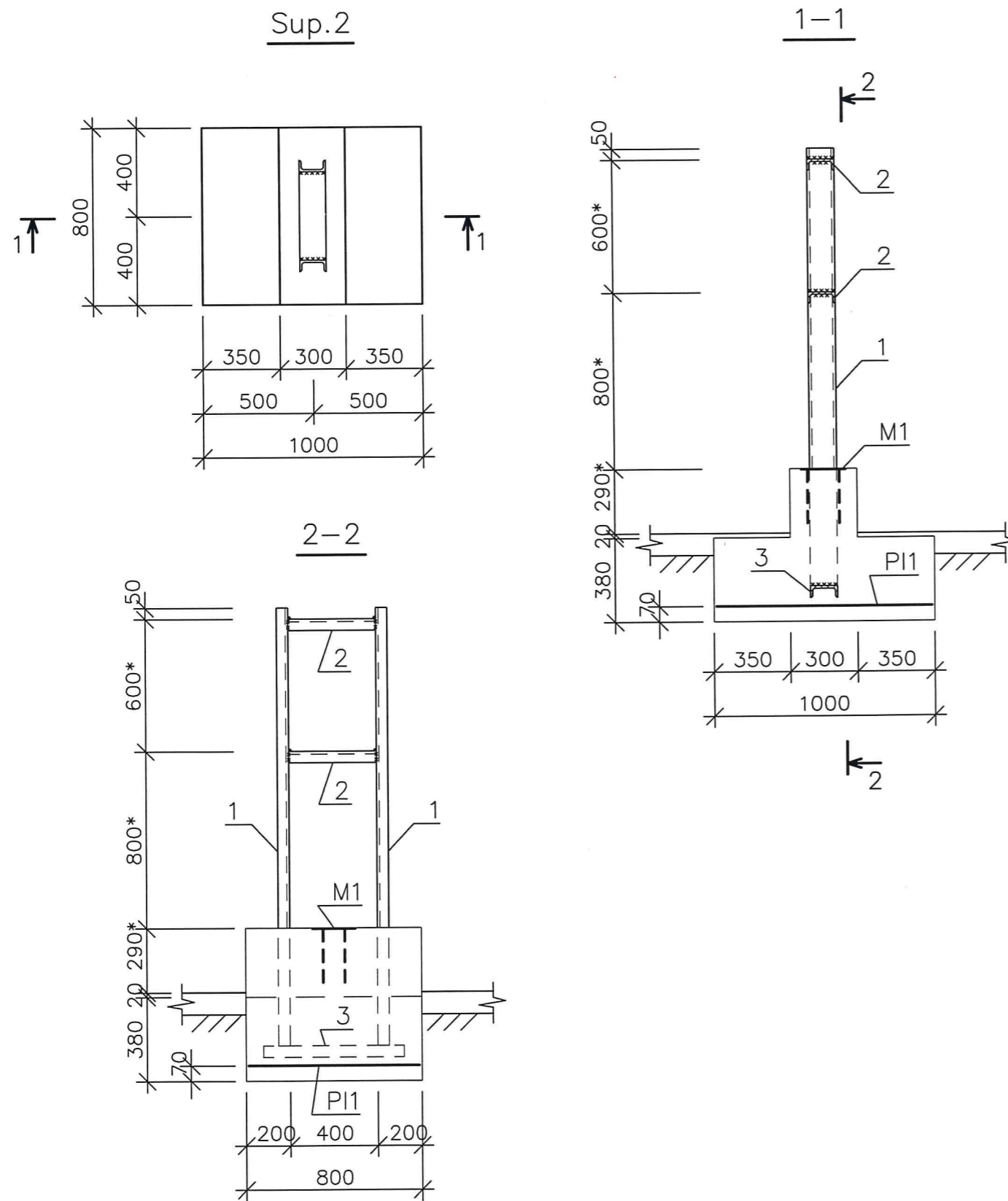


103/20-C					
Reconstructia Punctului Termic Central 5082 din str. Banulescu Bodoni 11/1, mun. Chisinau					
modif.	sect.	Plansa	Nr.doc.	Semnat	data
Solutii termomecanice				Faza	Plansa
				PE	8
Detaliul metalic Dm1;Dm2				"Termoelectrica" S.A.	
Inginer	Barbaneagra				03.21



Specificatia suportului Sup.2

Marca Poz.	M A R C A R E A	D E N U M I R E A	Cant.	Masa unit.kg	Nota
PI1	ГОСТ 23279-85	4C $\frac{8AIII-200}{8AIII-200}$ 75x95 $\frac{75}{75}$	1	2,99	
M1	s.3.400-6/76, c.19	Inglobata M1-24	1	2,3	
1	plansa data	[12, ГОСТ8240-89 L=1980	2	20,6	
2	la fel	[12, ГОСТ8240-89 L=400	2	4,16	
3	la fel	[12, ГОСТ8240-89 L=640	1	6,66	
<u>Materiale:</u>					
		Beton clasa B15	0,38		M3

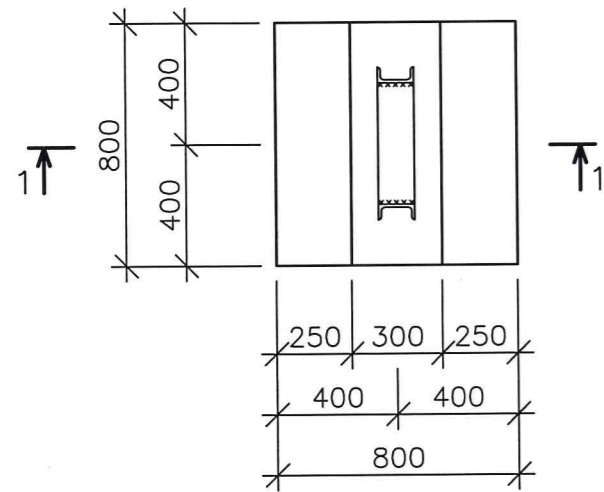


Borderoul consumului de metal la un element, kg

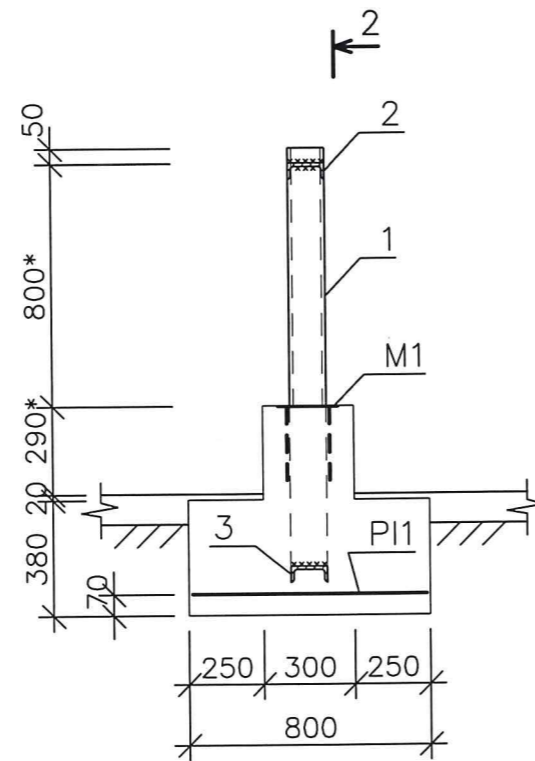
Element de marca	Articole armatura				Articole inglobate				De tot
	Clasa armaturii				Laminate				
	A-III				C235				
	ГОСТ 5781-82				ГОСТ 103-76				
	Ø8		Total		Ø8	Total	-6	Total	
Sup.2	2,99		2,99	0,4	0,4	1,9	1,9	5,29	

						103/20-C				
						Reconstructia Punctului Termic Central 5082 din str. Banulescu Bodoni 11/1, mun. Chisinau				
modif.	sect.	Plansa	Nr.doc.	Semnat	data					
						Solutii termomecanice		Faza	Plansa	Planse
								PE	9	
Inginer		Barbaneagra			03.21	Suportul Sup.2		"Termoelectrica" S.A.		

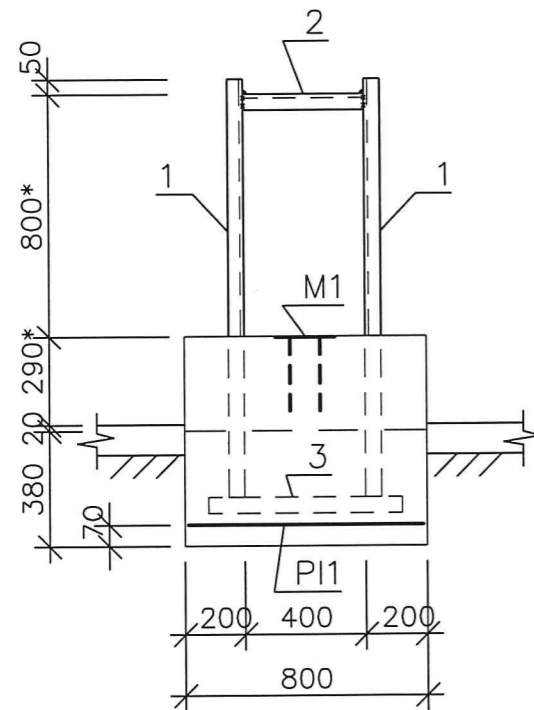
Sup.3



1-1



2-2



Specificatia suportului Sup.3

Marca Poz.	M A R C A R E A	D E N U M I R E A	Cant.	Masa unit.kg	Nota
PI1	ГОСТ 23279-85	4C $\frac{8AIII-200}{8AIII-200}$ 75x75 $\frac{75}{75}$	1	2,37	
M1	s.3.400-6/76, c.19	Inglobata M1-24	1	2,3	
1	plansa data	[12, ГОСТ 8240-89 L=1380	2	14,4	
2	la fel	[12, ГОСТ 8240-89 L=400	1	4,16	
3	la fel	[12, ГОСТ 8240-89 L=640	1	6,66	
<u>Materiale:</u>					
		Beton clasa B15	0,32		M3

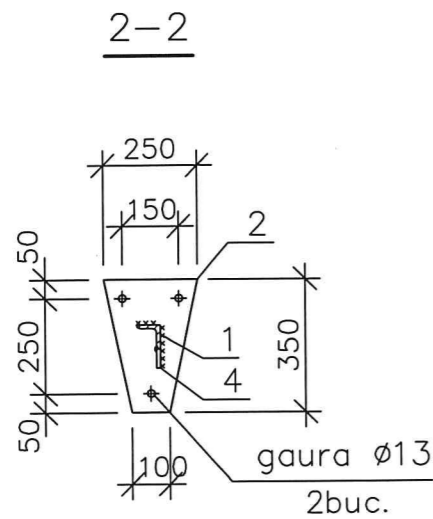
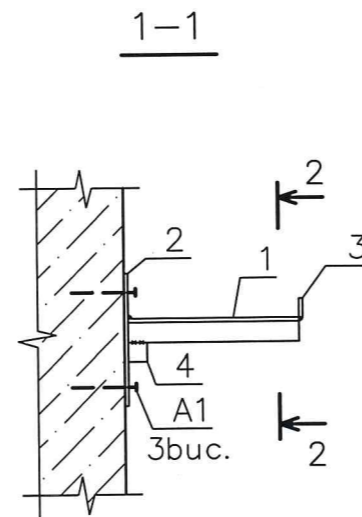
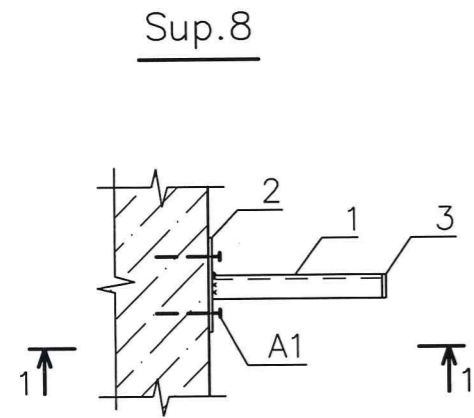
Borderoul consumului de metal la un element, kg

Element de marca	Articole armatura				Articole inglobate				De tot
	Clasa armaturii				Laminate				
	A-III				C235				
	ГОСТ 5781-82				ГОСТ 103-76				
	Ø8		Total	Ø8	Total	-6	Total		
Sup.3	2,37		2,37	0,4	0,4	1,9	1,9	4,67	

						103/20-C				
						Reconstructia Punctului Termic Central 5082 din str. Banulescu Bodoni 11/1, mun. Chisinau				
modif.	sect.	Plansa	Nr.doc.	Semnat	data					
						Solutii termomecanice		Faza	Plansa	Planse
								PE	10	
Inginer		Barbaneagra			03.21	Suportul Sup.3		"Termoelectrica" S.A.		



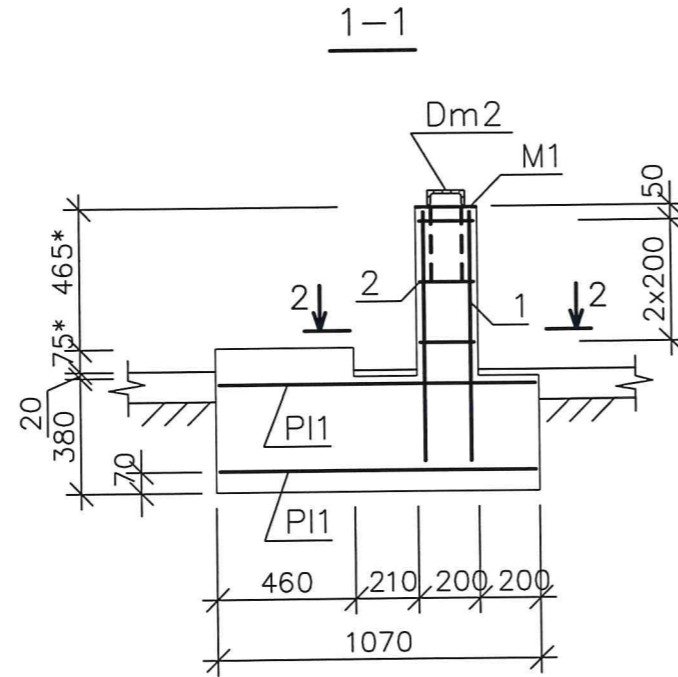
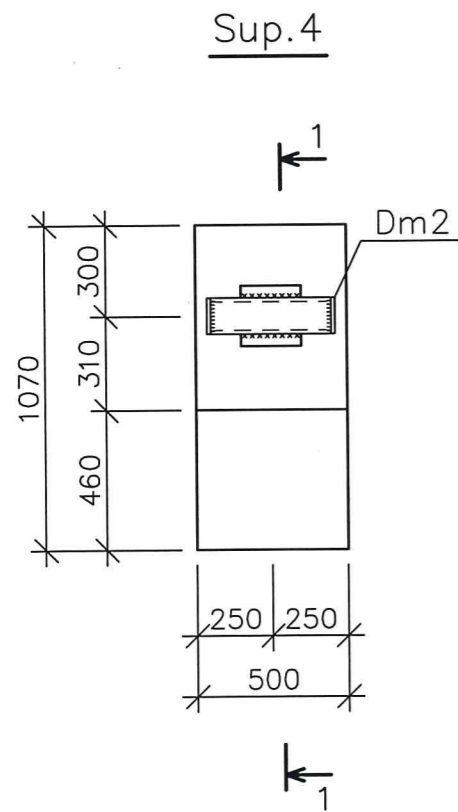
Specificatia suportului Sup.8



Marca Poz.	M A R C A R E A	D E N U M I R E A	Cant.	Masa unit.kg	Nota
1		plansa data	1	2,17	
2		la fel	1	5,5	
3		la fel	1	0,08	
4		la fel	1	0,1	
A1	catalog "LIDER"	Ancora tip expansiv cu piulita	3		
		12x150 (M10)			

						103/20-C				
						Reconstructia Punctului Termic Central 5082 din str. Banulescu Bodoni 11/1, mun. Chisinau				
modif.	sect.	Plansa	Nr.doc.	Semnat	data	Solutii termomecanice		Faza	Plansa	Planse
								PE	15	
Inginer		Barbaneagra			03.21	Suportul Sup.8		"Termoelectrica" S.A.		

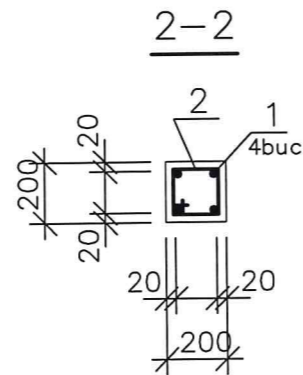
Specificatia suportului Sup.4



Marca Poz.	M A R C A R E A	D E N U M I R E A	Cant.	Masa unit.kg	Nota
Dm2	plansa 8	Detaliu metalic Dm2	1	4,84	
PI1	ГОСТ 23279-85	4C $\frac{8AIII-200}{8AIII-200}$ 45x105	2	2,31	
1	la fel	A-III-10, ГОСТ 5781-82, L= 830	4	0,52	
2	la fel	A-I-6, ГОСТ 5781-82, L= 790	3	0,18	
M1	s.3.400-6/76, c.19	Inglobata M1-24	1	2,3	
<u>Materiale:</u>					
		Beton clasa B15	0,25		M3

Borderoul elementelor

Poz.	Schita
2	



Borderoul consumului de metal la un element, kg

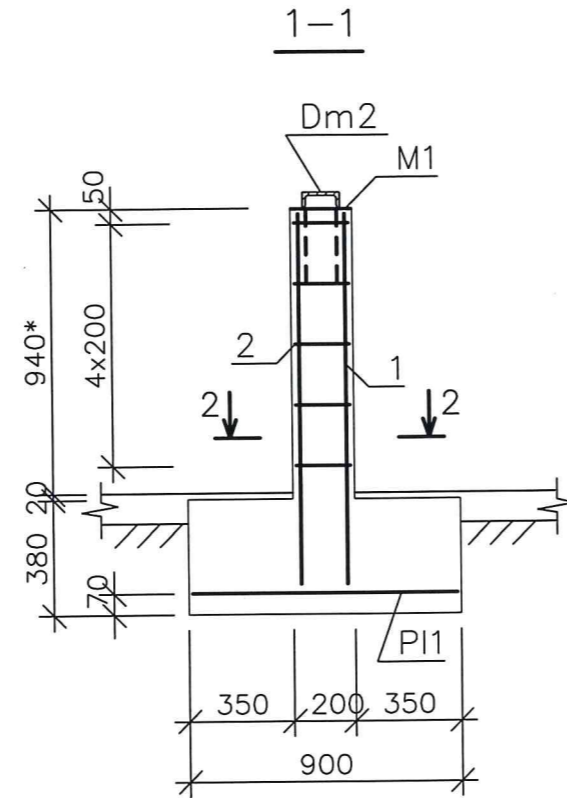
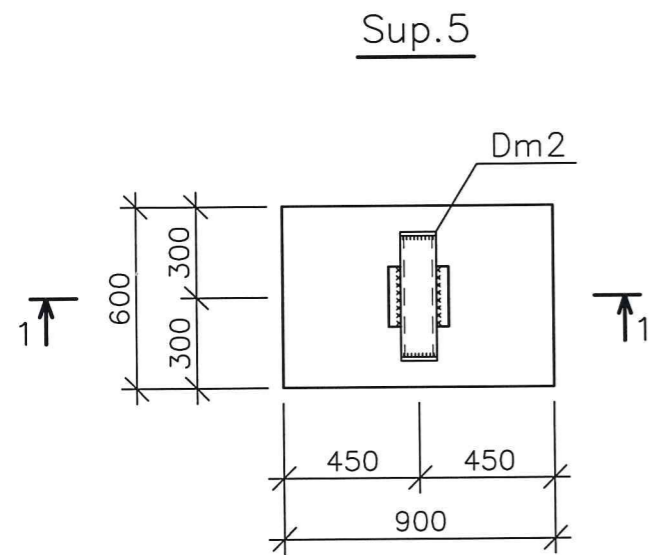
Element de marca	Articole armatura						Articole inglobate						De tot
	Clasa armaturii						Laminate						
	A-I			A-III			C235						
	ГОСТ 5781-82						ГОСТ 103-76						
	Ø6		Total	Ø8	Ø10	Total	Ø8		Total	-6		Total	
Sup.4	0,54		0,54	4,62	2,08	6,7	0,4		0,4	1,9		1,9	9,54

						103/20-C		
						Reconstructia Punctului Termic Central 5082 din str. Banulescu Bodoni 11/1, mun. Chisinau		
modif.	sect.	Plansa	Nr.doc.	Semnat	data	Solutii termomecanice		
						Faza	Plansa	Planse
						PE	11	
Inginer	Barbaneagra				03.21	Suportul Sup.4		"Termoelectrica" S.A.



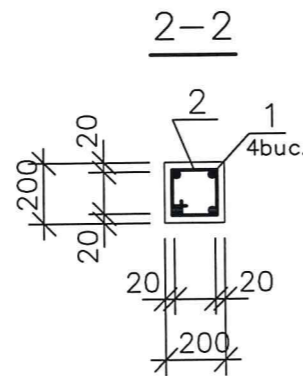
Specificatia suportului Sup.5

Marca Poz.	M A R C A R E A	D E N U M I R E A	Cant.	Masa unit.kg	Nota
Dm2	plansa 8	Detaliu metalic Dm2	1	4,84	
PI1	ГОСТ 23279-85	4C $\frac{8AIII-200}{8AIII-200}$ 55x85 $\frac{25}{75}$	1	2,10	
1	la fel	A-III-10, ГОСТ 5781-82, L=1250	4	0,78	
2	la fel	A-I-6, ГОСТ 5781-82, L=790	5	0,18	
M1	s.3.400-6/76, c.19	Inglobata M1-24	1	2,3	
<u>Materiale:</u>					
		Beton clasa B15	0,25		M3



Borderoul elementelor

Poz.	Schita
2	

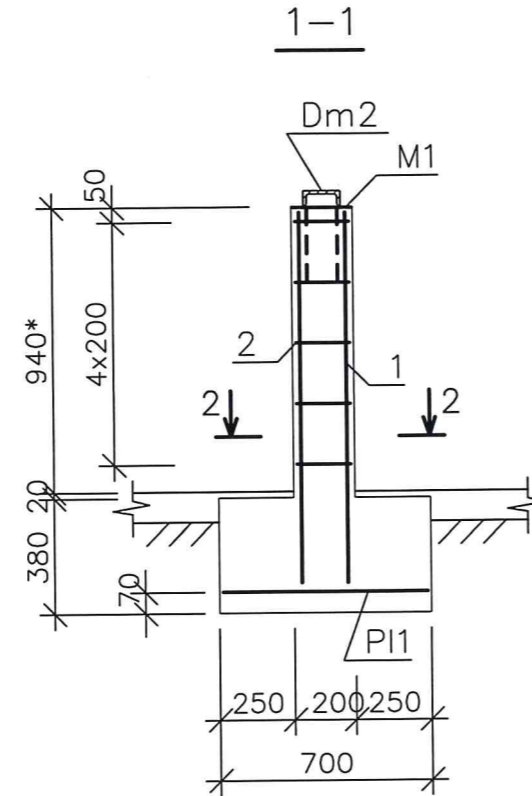
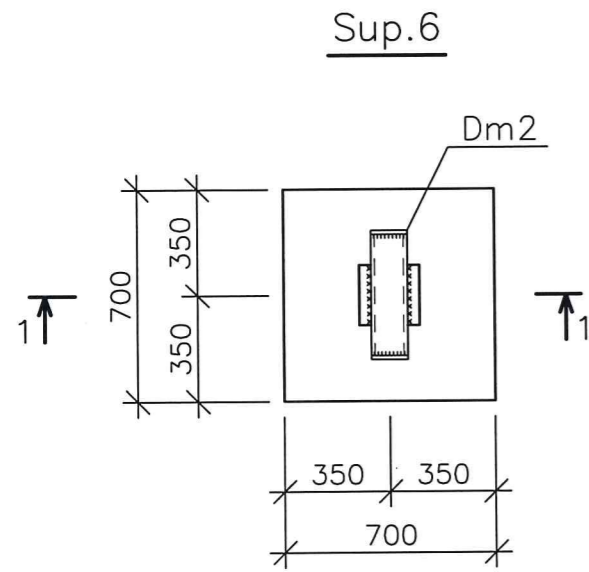


Borderoul consumului de metal la un element, kg

Element de marca	Articole armatura						Articole inglobate						De tot
	Clasa armaturii						Laminate						
	A-I			A-III			C235						
	ГОСТ 5781-82						ГОСТ 103-76						
	Ø6		Total	Ø8	Ø10	Total	Ø8		Total	-6		Total	
Sup.5	0,9		0,9	2,10	3,12	5,22	0,4		0,4	1,9		1,9	8,42

						103/20-C		
						Reconstructia Punctului Termic Central 5082 din str. Banulescu Bodoni 11/1, mun. Chisinau		
modif.	sect.	Plansa	Nr.doc.	Semnat	data			
						Solutii termomecanice		
						Faza	Plansa	Planse
						PE	12	
Inginer		Barbaneagra			03-21	Suportul Sup.5		
						"Termoelectrica" S.A.		

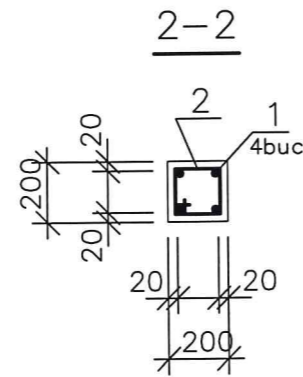
Specificatia suportului Sup.6



Marca Poz.	M A R C A R E A	D E N U M I R E A	Cant.	Masa unit.kg	Nota
Dm2	plansa 8	Detaliu metalic Dm2	1	4,84	
PI1	ГОСТ 23279-85	4C $\frac{8AIII-200}{8AIII-200}$ 65x65	1	2,06	
1	la fel	A-III-10, ГОСТ 5781-82, L=1250	4	0,78	
2	la fel	A-I-6, ГОСТ 5781-82, L=790	5	0,18	
M1	s.3.400-6/76, c.19	Inglobata M1-24	1	2,3	
<u>Materiale:</u>					
		Beton clasa B15	0,23		M3

Borderoul elementelor

Poz.	Schita
2	



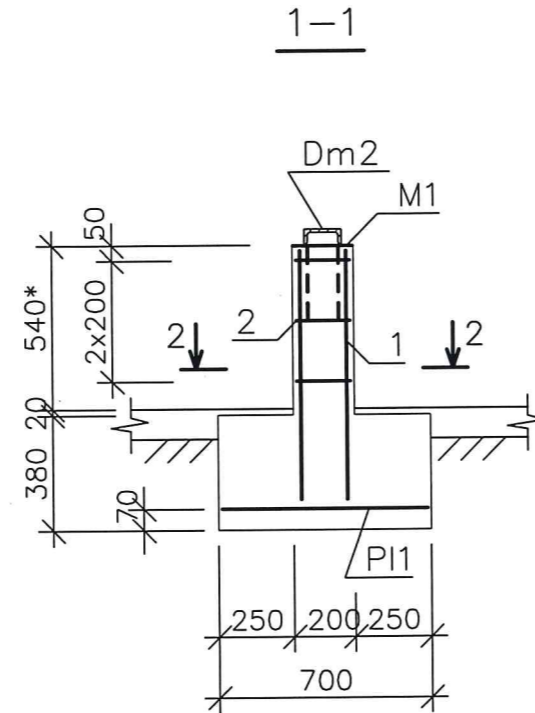
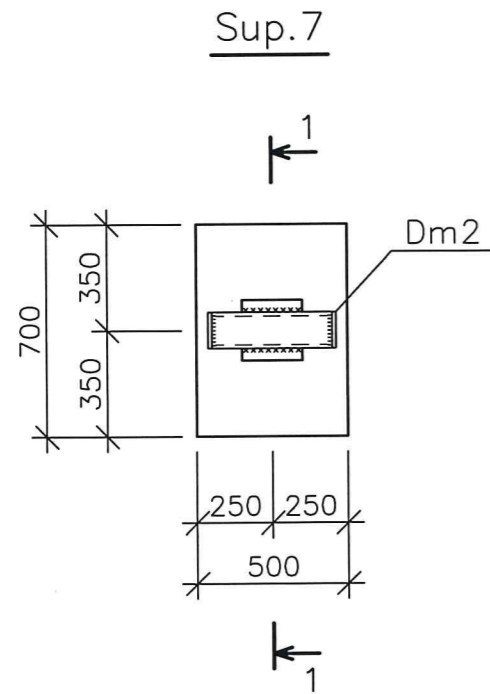
Borderoul consumului de metal la un element, kg

Element de marca	Articole armatura						Articole inglobate						De tot
	Clasa armaturii												
	A-I			A-III			Laminate						
	ГОСТ 5781-82						ГОСТ 103-76						
	Ø6		Total	Ø8	Ø10	Total	Ø8		Total	-6		Total	
Sup.6	0,9		0,9	2,06	3,12	5,18	0,4		0,4	1,9		1,9	8,38

						103/20-C		
						Reconstructia Punctului Termic Central 5082 din str. Banulescu Bodoni 11/1, mun. Chisinau		
modif.	sect.	Plansa	Nr.doc.	Semnat	data			
						Solutii termomecanice		
						Faza	Plansa	Planse
						PE	13	
Inginer	Barbaneagra				03.21	Suportul Sup.6		
						"Termoelectrica" S.A.		



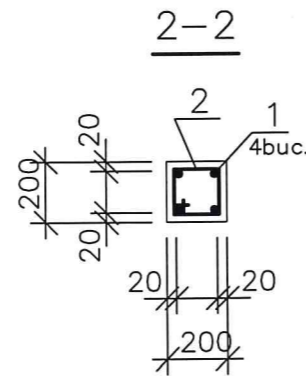
Specificatia suportului Sup.7



Marca Poz.	M A R C A R E A	D E N U M I R E A	Cant.	Masa unit.kg	Nota
Dm2	plansa 8	Detaliu metalic Dm2	1	4,84	
PI1	ГОСТ 23279-85	4C 8AIII-200 45x65 8AIII-200	1	1,49	
1	la fel	A-III-10,ГОСТ5781-82,L=830	4	0,52	
2	la fel	A-I-6, ГОСТ5781-82,L=790	3	0,18	
M1	s.3.400-6/76, c.19	Inglobata MИ1-24	1	2,3	
<u>Materiale:</u>					
		Beton clasa B15	0,16		M3

Borderoul elementelor

Poz.	Schita
2	



Borderoul consumului de metal la un element, kg

Element de marca	Articole armatura						Articole inglobate						De tot
	Clasa armaturii						Laminare						
	A-I			A-III			C235						
	ГОСТ 5781-82						ГОСТ 103-76						
	Ø6		Total	Ø8	Ø10	Total	Ø8		Total	-6		Total	
Sup.7	0,54		0,54	1,49	2,08	3,57	0,4		0,4	1,9	1,9	6,41	

						103/20-C		
						Reconstructia Punctului Termic Central 5082 din str. Banulescu Bodoni 11/1, mun. Chisinau		
modif.	sect.	Plansa	Nr.doc.	Semnat	data			
						Solutii termomecanice		
						Faza	Plansa	Planse
						PE	14	
Inginer	Barbaneagra				03.21	Suportul Sup.7		
						"Termoelectrica" S.A.		