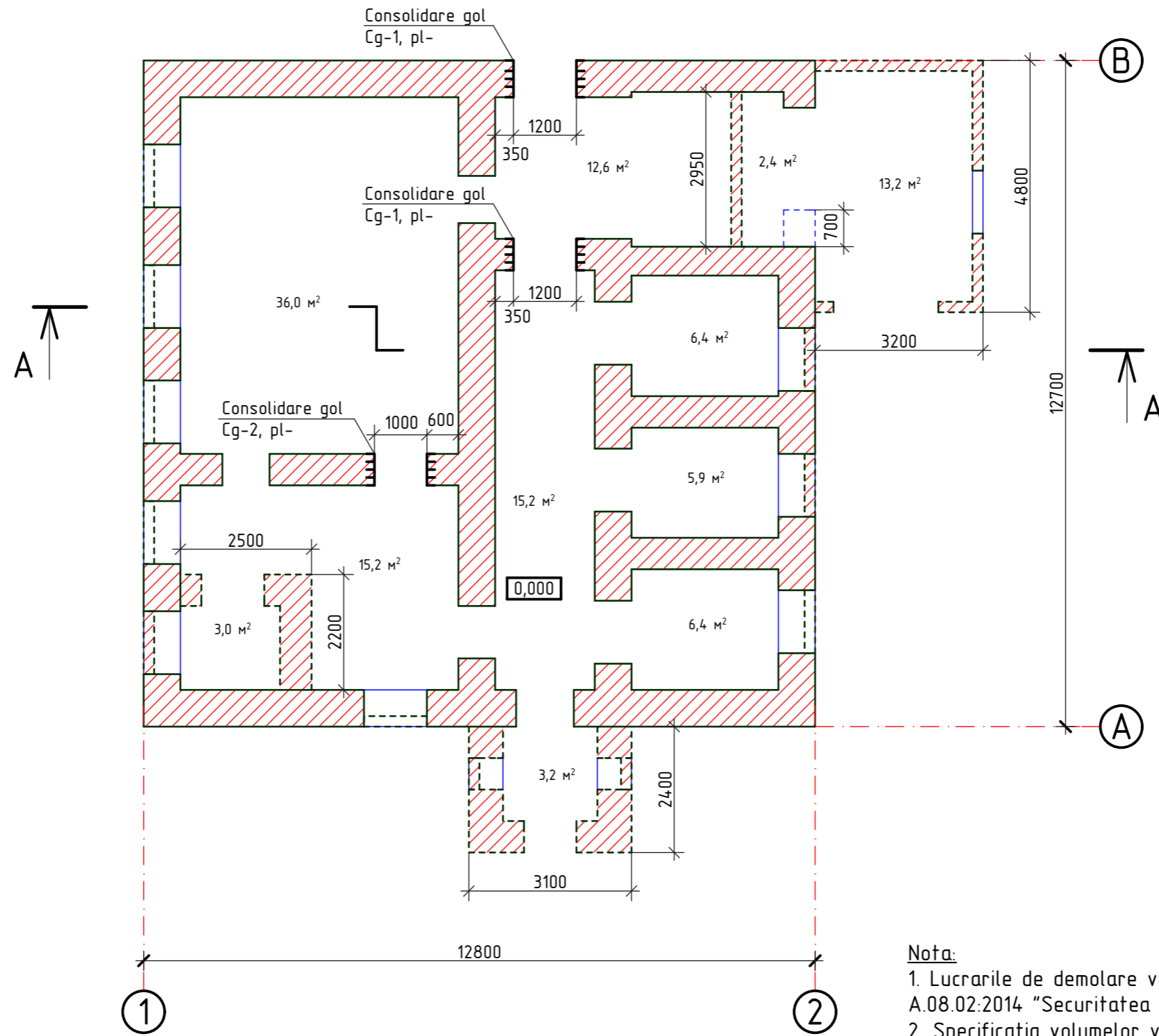





Plan la cota 0.000 (lucrari de demolare)

sc. 1:100



Nota:

1. Lucrarile de demolare vor fi efectuate in conformitate cu NCM A.08.02:2014 "Securitatea si sanatatea muncii in constructii".
2. Specificatia volumelor vezi pl. 5.

-  - perete existent din piatra $\delta=600\text{mm}$ supusi demolarii
-  - perete existent din blocuri de calcar $\delta=200\text{mm}$ supusi demolarii
-  - spargerea golului de usa in perete din piatra $\delta=600-700\text{mm}$

						OBIECTIV NR. - 20.02-D/20-SAC			
						Reparatia cladirii cu nr. cadastral 412810932, gazificarea si aprovizionarea cu energie electrica din s. Gaspar, r-ul Edinet			
Mod.	Can.	Foia	Nr.d.	Semnat.	Data	Reparatia cladirii	faza	plansa	planse
ASP				Mihaila V.	05.20		PE	3	
ISP				Hihlat E.	05.20				
Elaborat				Ciobanu V.	05.20	Plan la cota 0.000 (lucrari de demolare)	SRL "Geo-Cad-Proiect" mun. Balti		

Nr.inve.a.orig. Data si semnatura Nr.inve.schim.