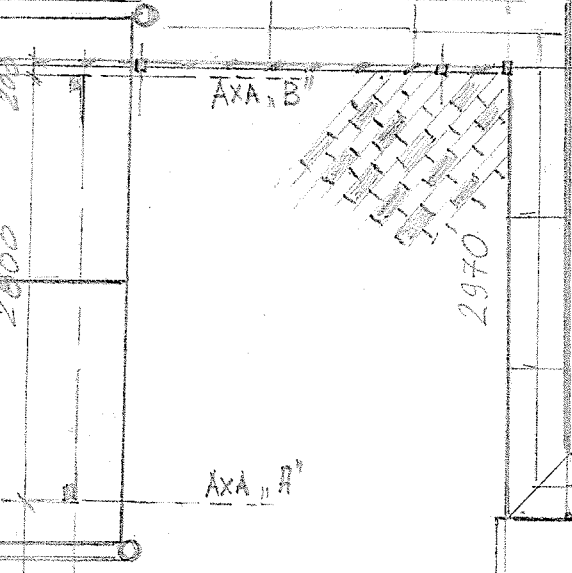
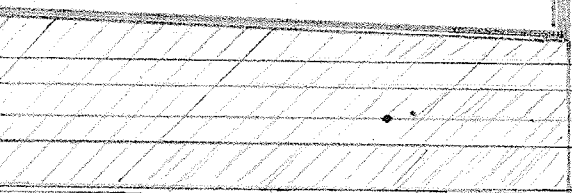
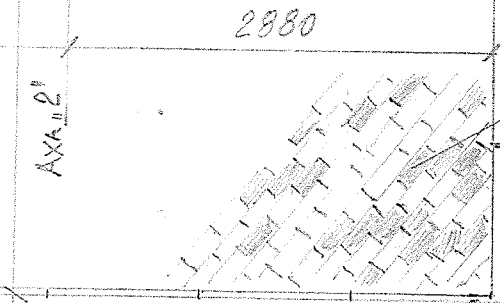


200x25

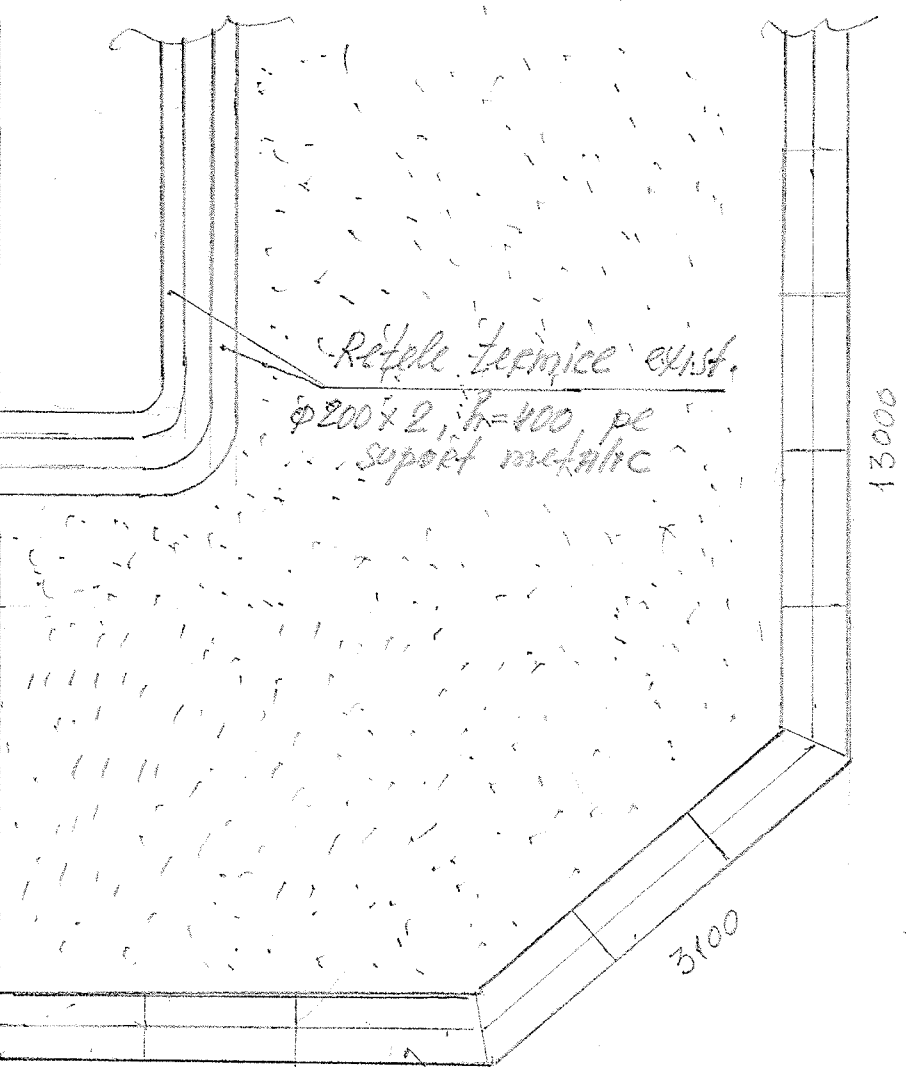
RODUCERE



profilat
(100x60)



2.0m



Rețele termice exist.
φ200x2, h=400 pe
suport metalic

13000

3700

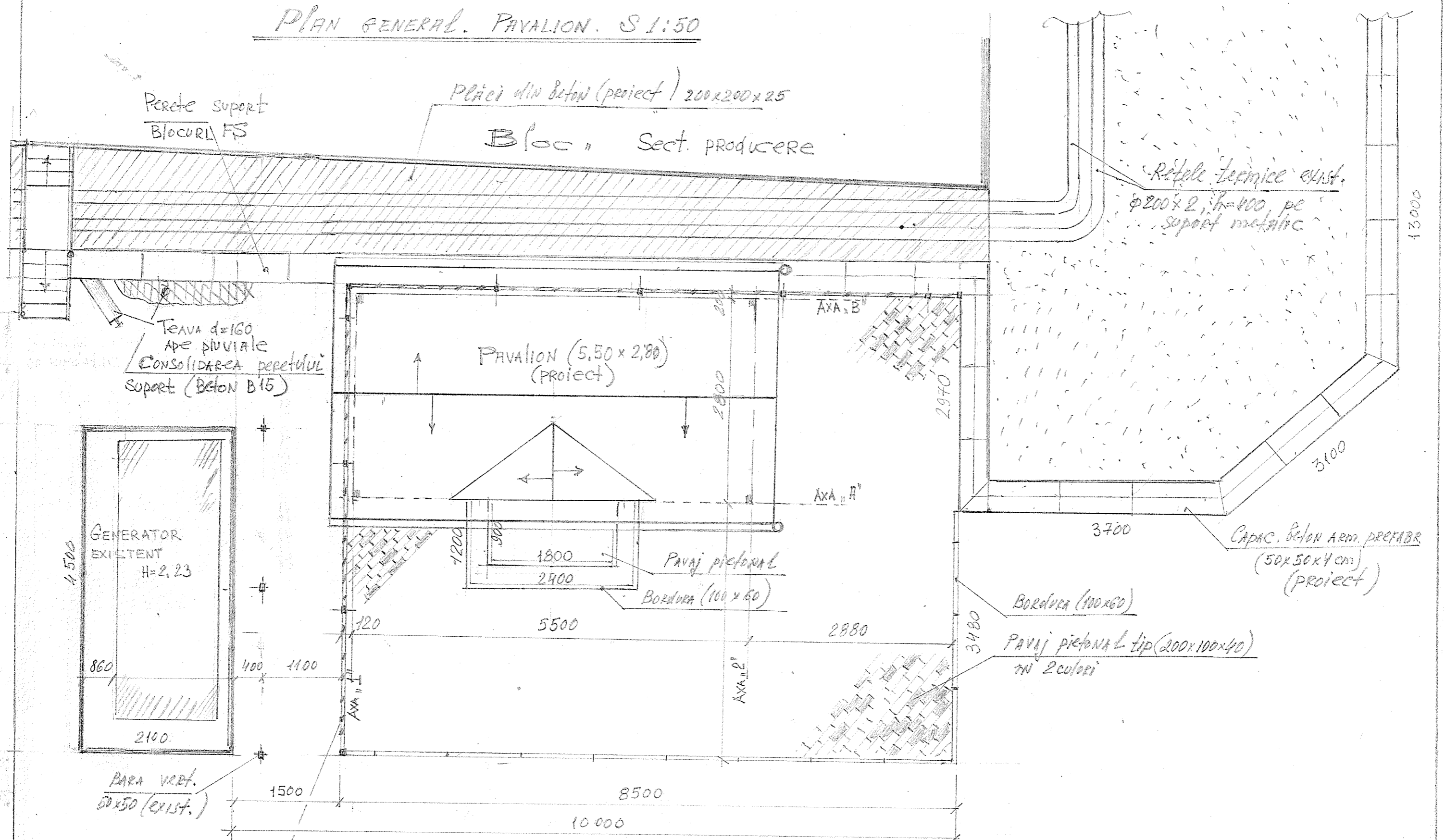
CAPAC, BETON ARM. PREFABR.
(50x50x4 cm)
(proiect)

Bordura (100x60)

PAVAJ pietonal L tip (200x100x40)
TN 2 culori

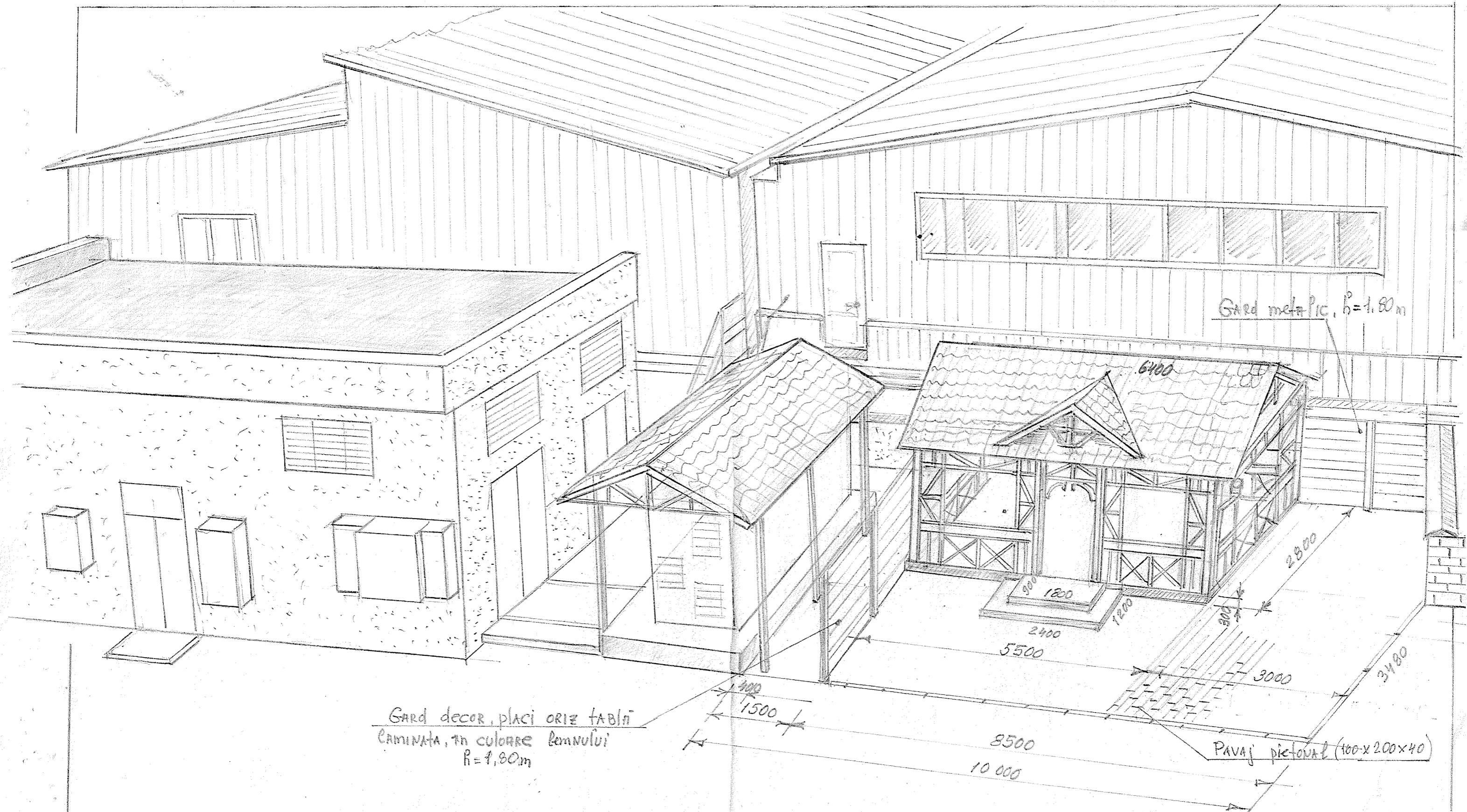
EXECUTAT: Inginer-coord. SC DAIL, Mihail PROCOB

PLAN GENERAL. PAVALION. S 1:50



Gard decor. plăci oriz. tablă laminată, secțiune=2,0m
 IN culoare lemnului, R=1,80m
 (VEZI PLANSA-4)

EXECUTAT: Inginer-coord. SC DAIL, Mihai Procop



GARD decor, placi ORIZ TABLI
 CAMINATA, in culoare lemnului
 h=1,80m

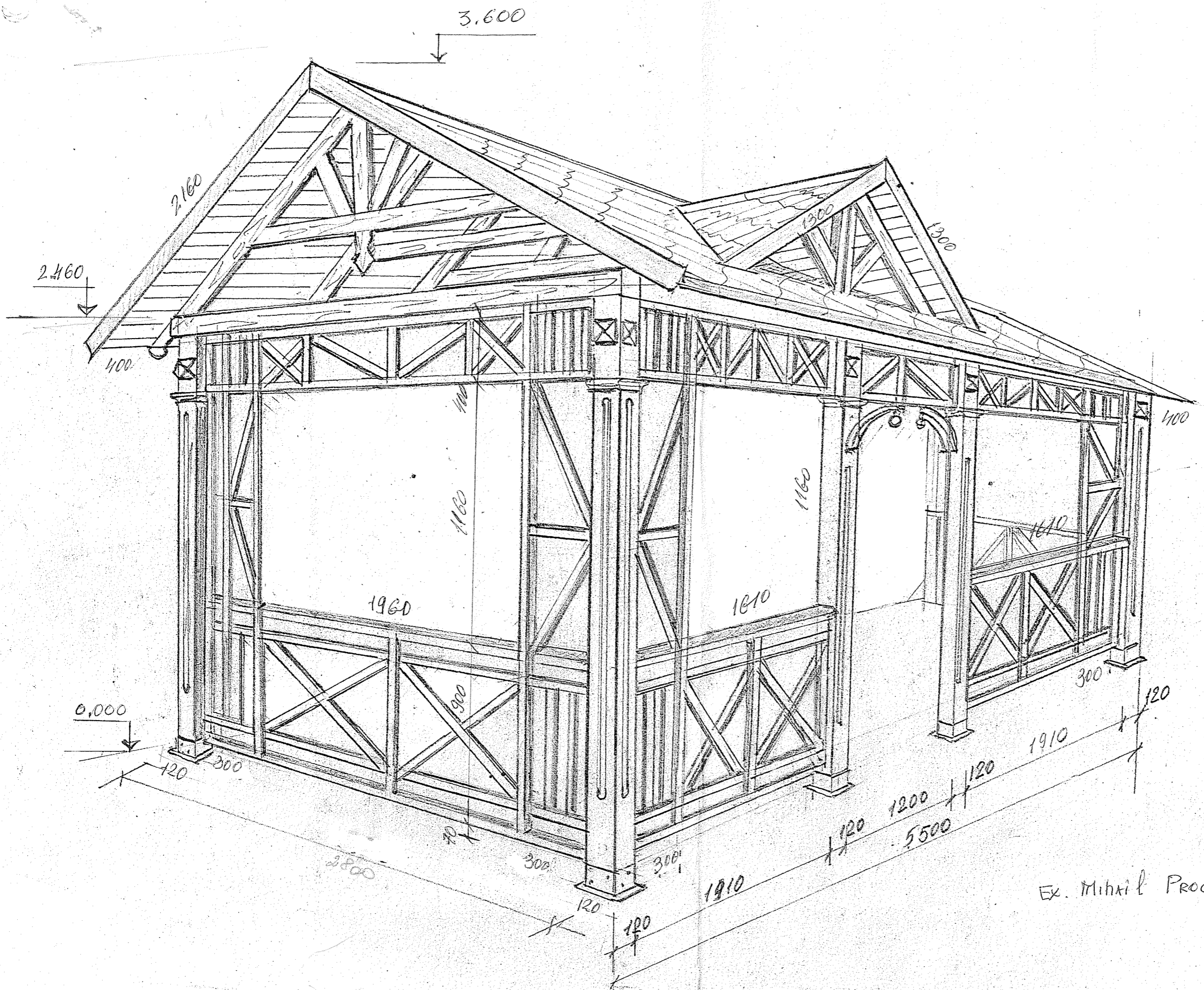
Gard metalic, h=1,80m

VEDERE 3D. PAVILION (5,50 x 2,80m)

STR. A. PUŞKIN, NR. 42

EXECUTAT : INGINER-coord. SC a DAIL , MIRAI PROCOP

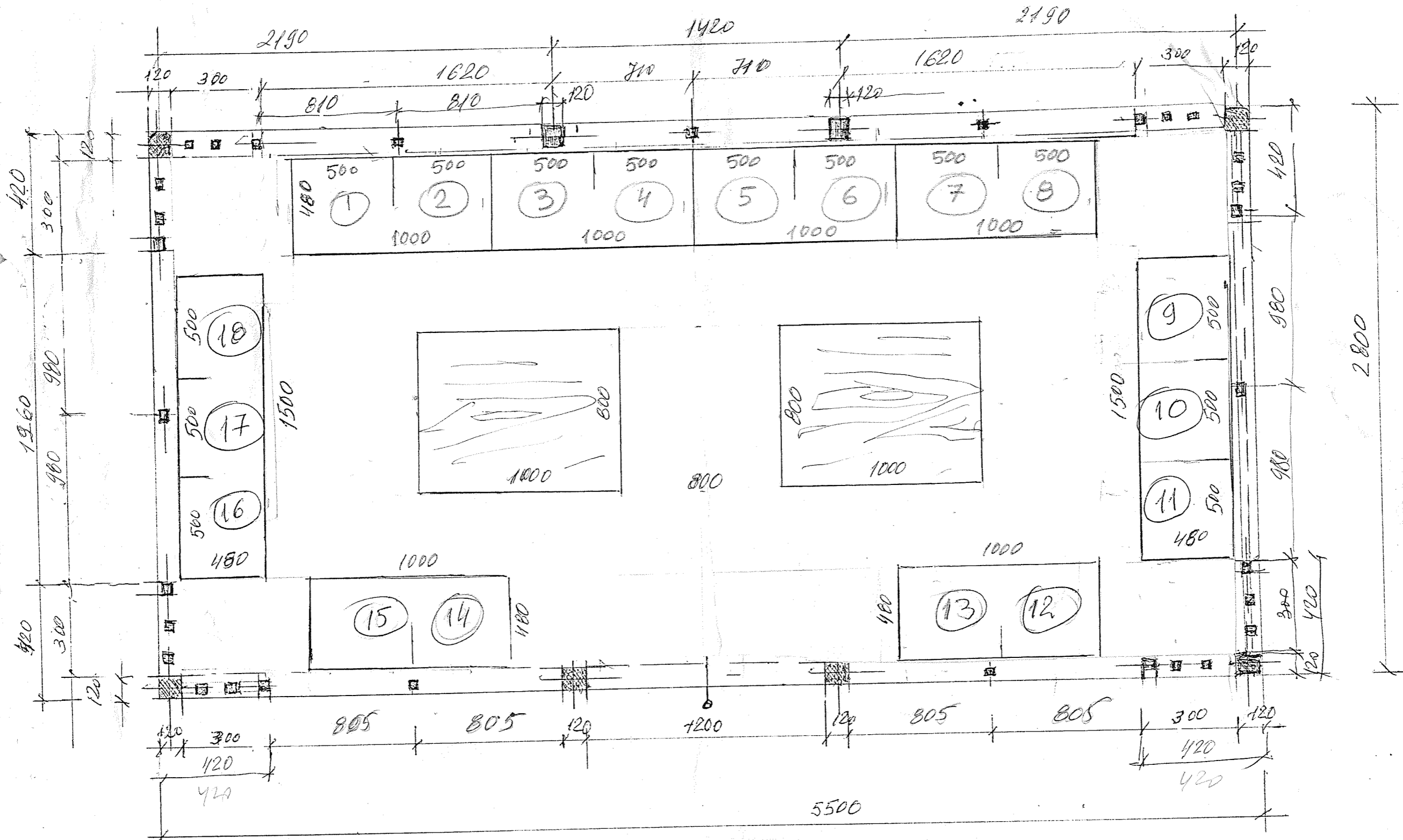
PLANSA-2 | Planşe-10



Ex. Mikhail Procop 0600-65169

PLAN, cota 0,000

Schema de amplasare scaunelor și masa din Lemn



EX. Mihail PROCOP 0600-65169

Golf Bitum. grosimea - 4mm
TIP "ANTRATIT"

Pelicola anticorodens

STRAT. OSB, 18mm

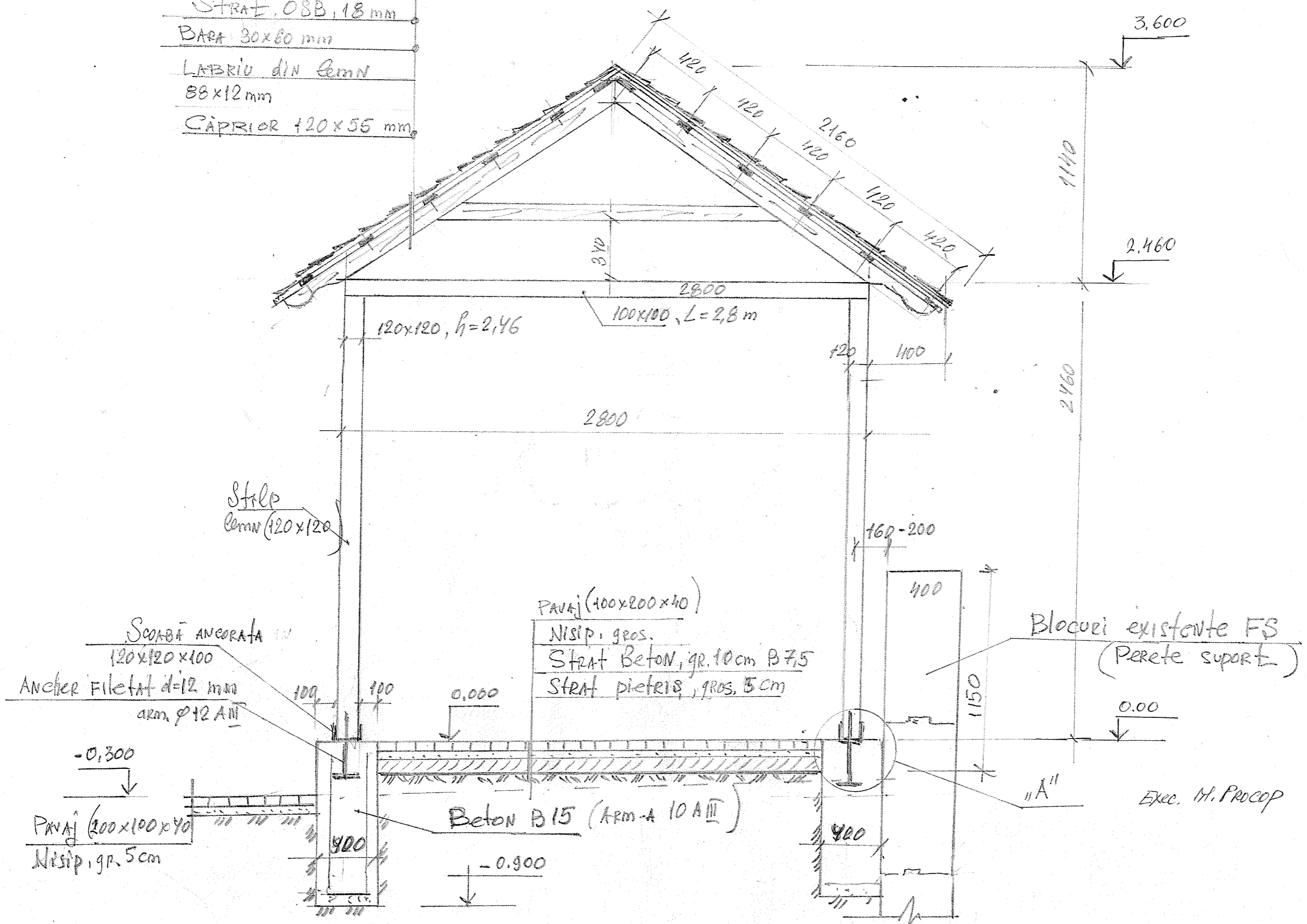
BARA 30x60mm

LĂTRIU din Lemn

88x12mm

CĂPRIOR 120x55mm

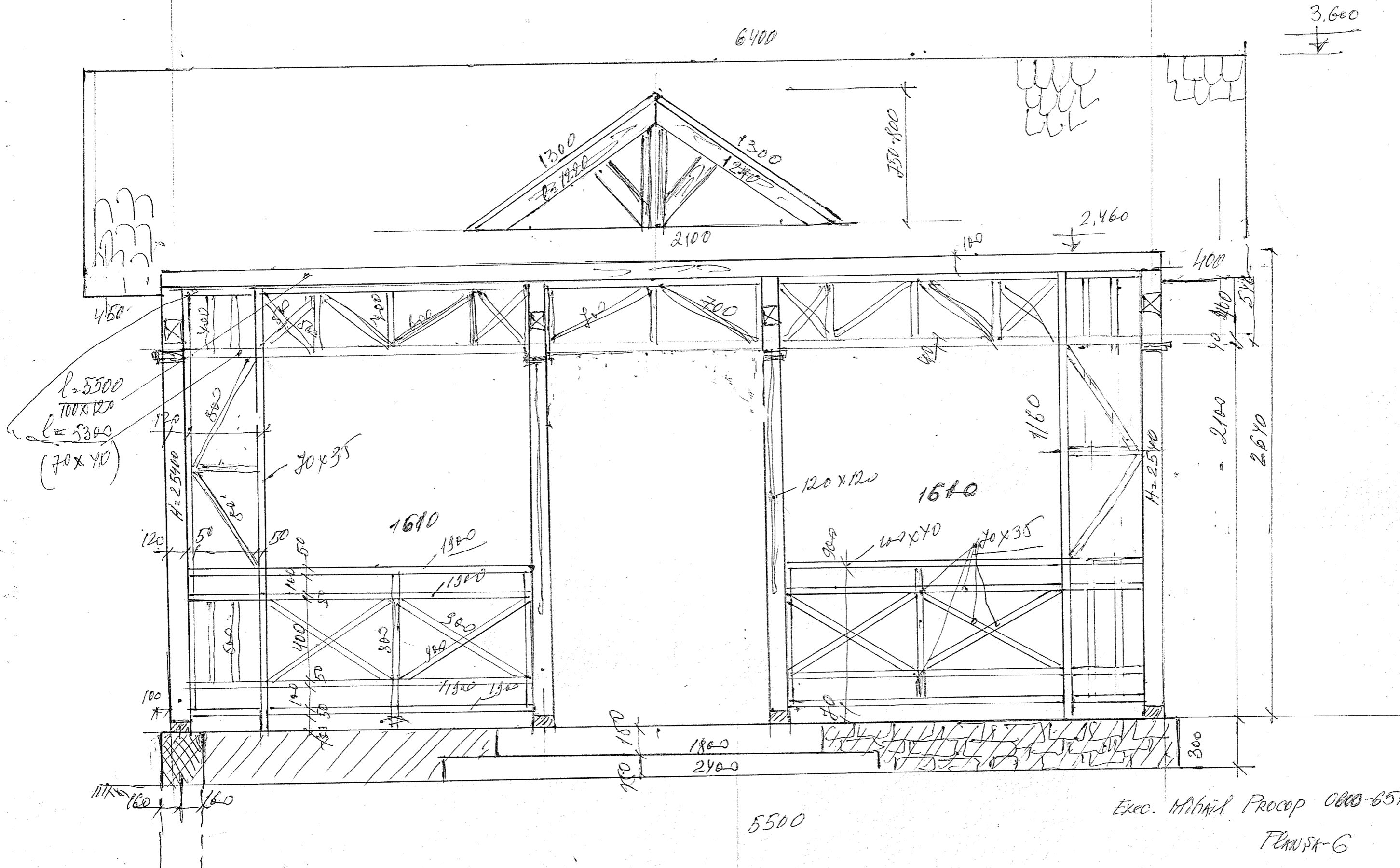
SECȚIUNEA I-I



Exec. M. PROCOPIU 0600-65169

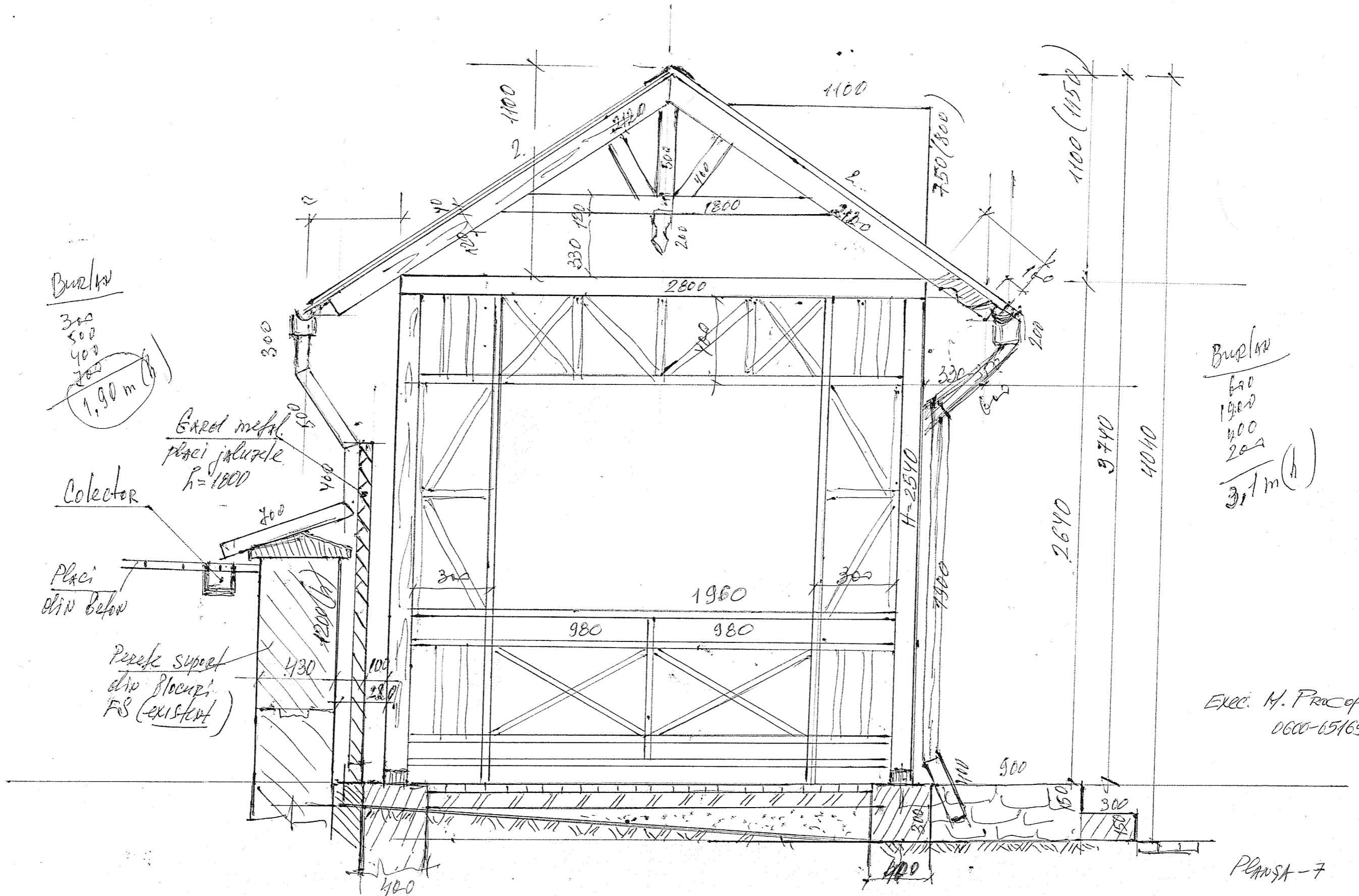
Planșă-5

FACADA PRINCIPALĂ S 1:20
 AXA 1÷2



Exec. Mihail Procop 0600-65169
 PLANȘA-6

FASADA AXA B-A



Burlac

300
500
400
700
1,90 m (h)

Gard metal
placi jaluzele
h=1800

Colector

Placi
din beton

Perete suport
din blocuri
FS (existent)

Burlac

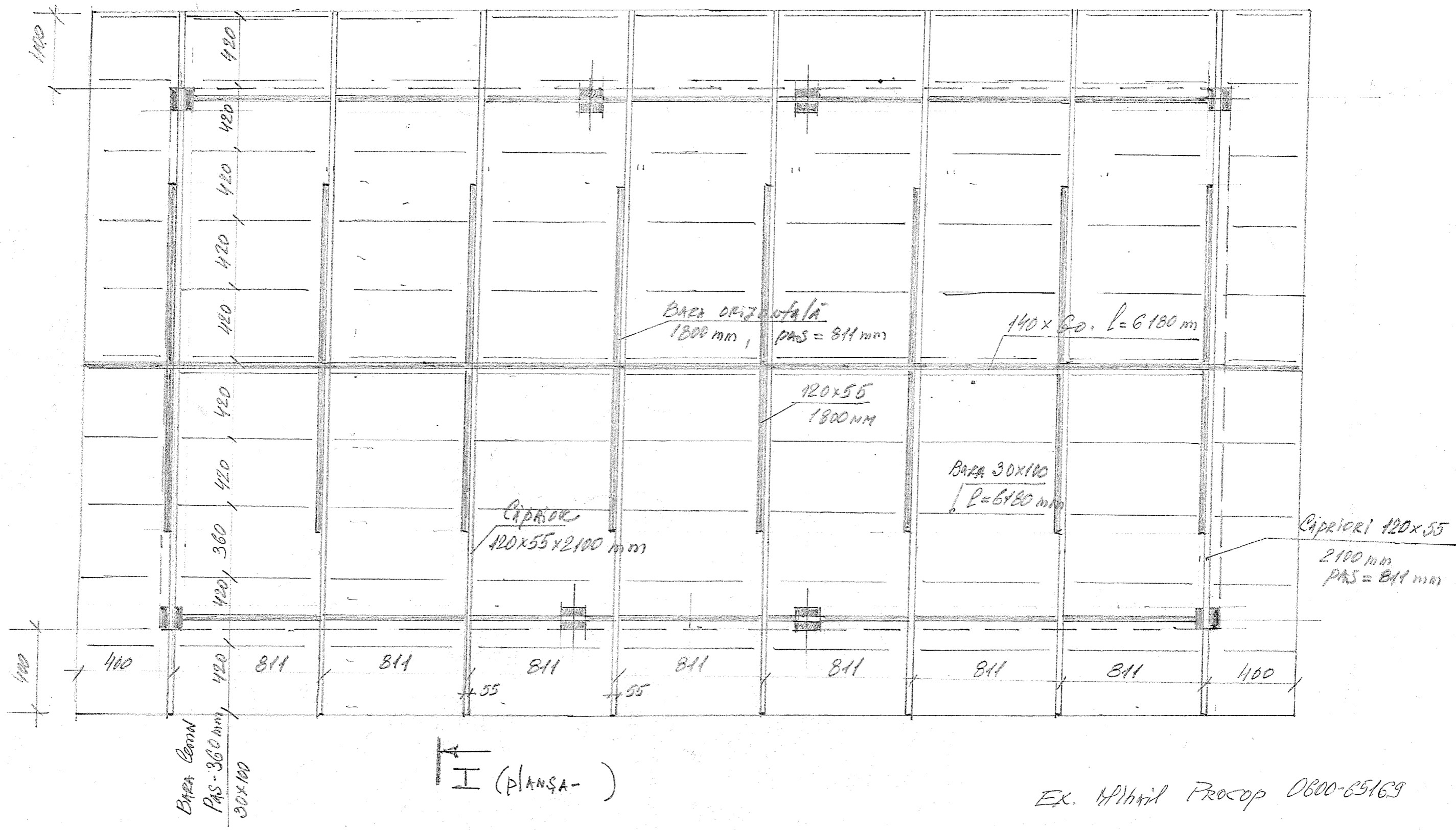
600
1900
400
200
3,1 m (h)

EXEC. M. Procop
0600-65169

PLANSĂ - 7

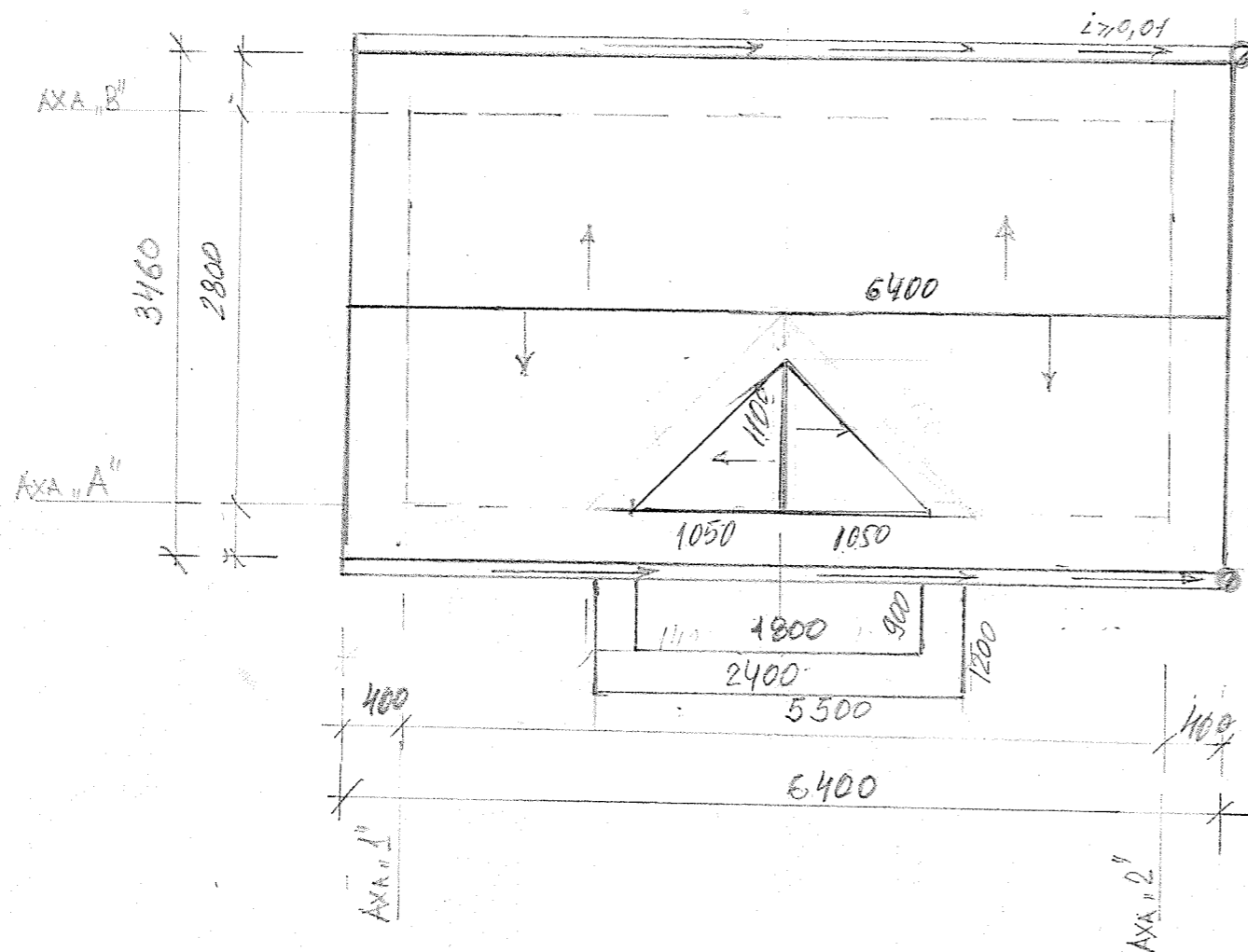


PLAN planșei din CERN. PAVILION



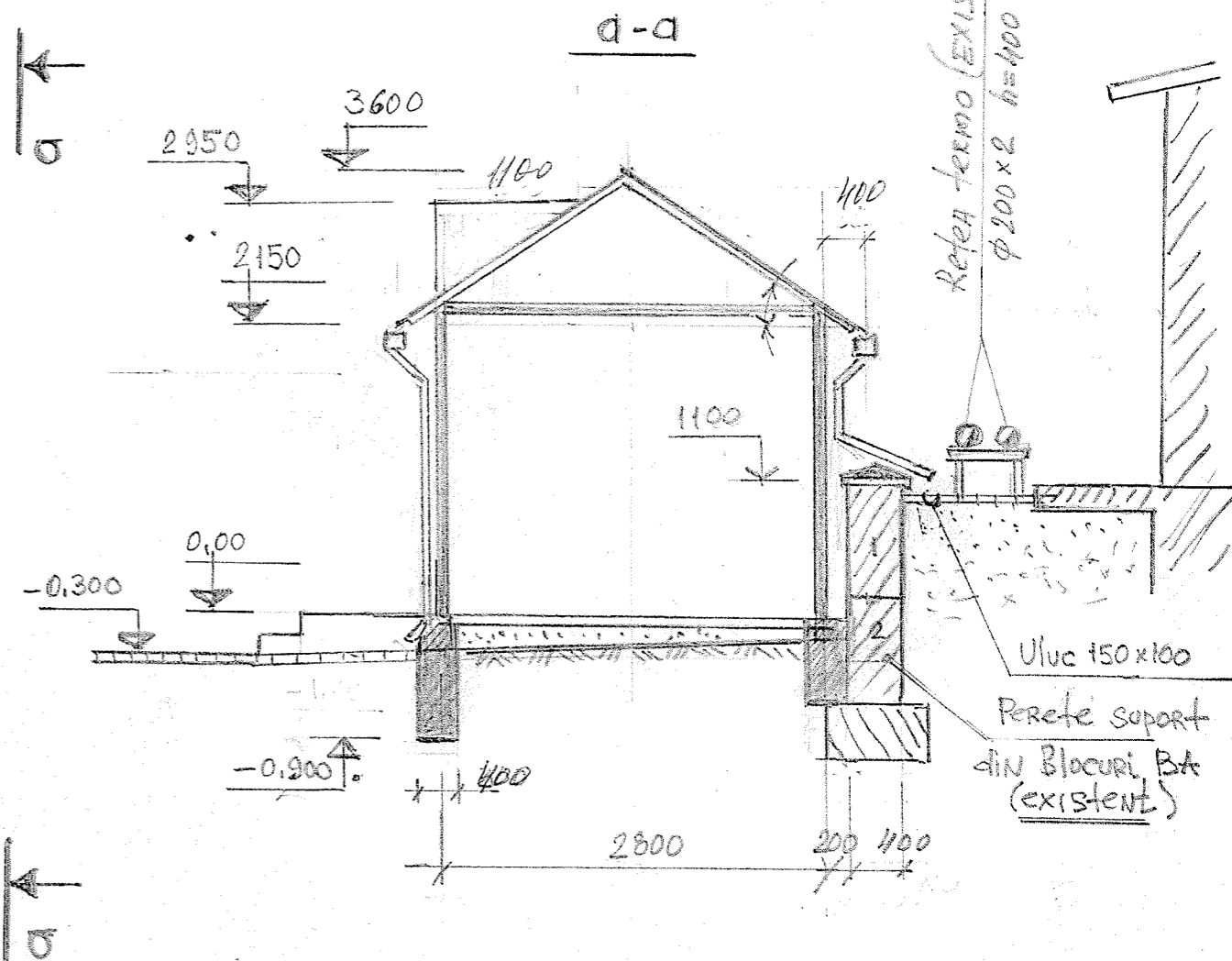
EX. Mihail Procop 0600-65169

PLAN ACOPERIȘ S 1:50



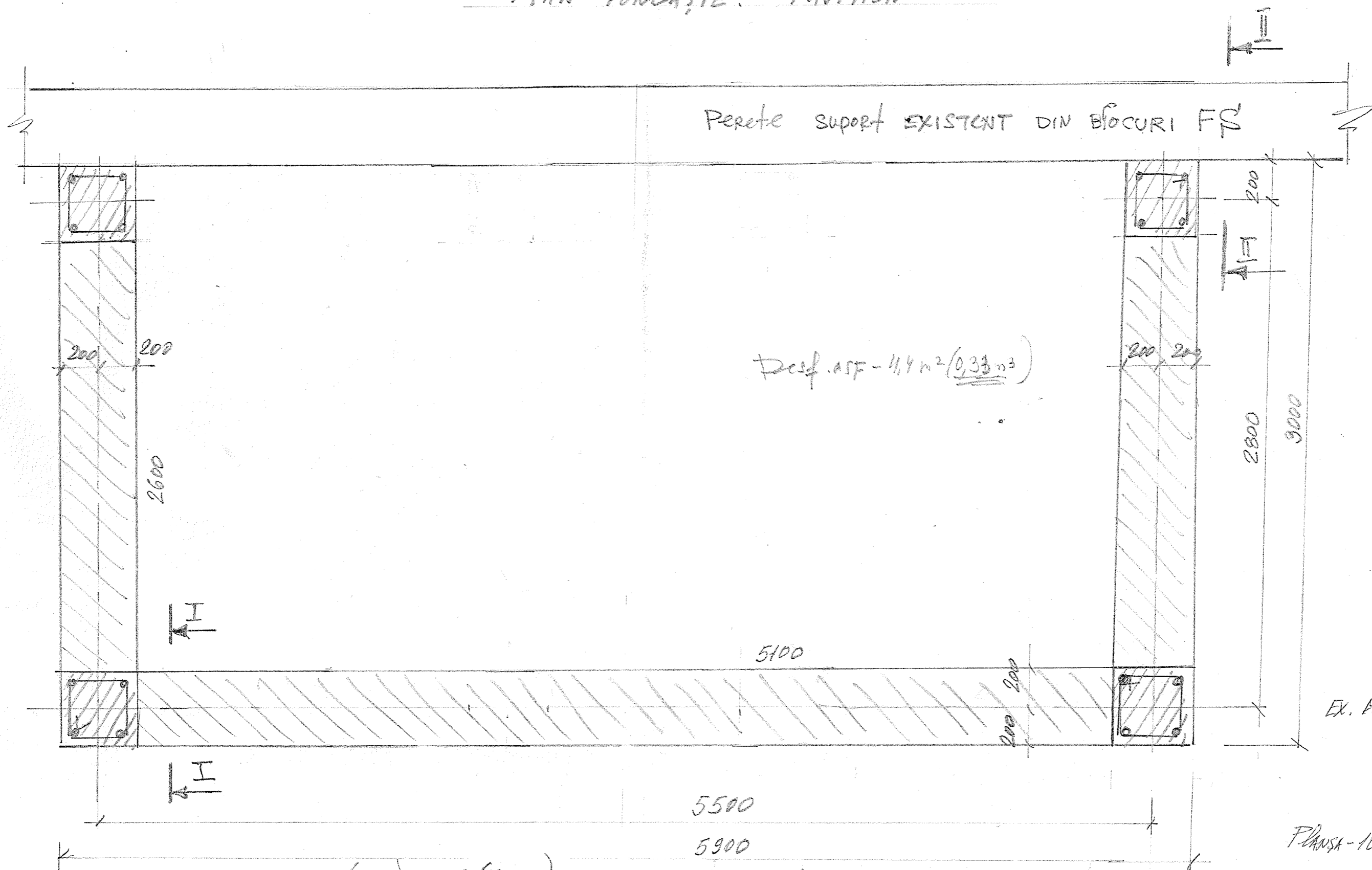
LEGENDA:

Nr. d.o.	DENUMIREA materialelor	U.M.	CANTIT.
1	Tigla bituminoasa, tip ANTRAFIT, grosimea 4mm	M2	
2	Burlan, tip BRASS, tabla laminata d=89mm	m	
3	Jgheab, B=125mm	m	
4	Coltar racord intern 150x150 mm,	M	3,50
5	Coama, 150x150 mm	M	7,30
6	Coltar exter. imbinare 150x100x150 mm	M	



EXECUTAT: Inginer-coord. SC a DAIL Mihail PROCOP

PLAN FUNDATIE PAVILION



Desf. ASF - $4,4 \text{ m}^2$ ($0,33 \text{ m}^3$)

Ex. Mihail PROCOF
0600-65169

Flauşa - 10

ARM-RAI: $\phi 12 \text{ A III} - (16 \text{ m}) = 0,888 (16,0 \text{ kg})$
 $0,617 \quad \phi 10 \text{ A III} - (72,0 \text{ m}) = 44,35 \text{ kg}$
 $0,143 \quad \phi 5,5 \text{ A I} - (24,0 \text{ m}) = 72,0 \text{ kg} = 23,93 \text{ kg}$
 $0,888 \quad \phi 12 \text{ A III} - (2,0 \text{ m}) = \text{BULON}$

SAPINTUL sub fund.
 - $4,4 \text{ m}^2$ (Desf. ASF)
 - $2,84 \text{ m}^3$ - pământ
 - TALPĂRI ACE - 13 m

Beton M 200 = $(11,1 \times 0,9 \text{ h} \times 0,4) = 3,99 \text{ m}^3$
 COFRAJ ($23 \text{ m} \times 0,4 \text{ h}$) = $9,2 \text{ m}^2$
 Surfi neze ($4 \times 4 \text{ cm}$) $l = 0,5 \text{ m} \times 46 \text{ buc} = 0,023 \text{ m}^3$