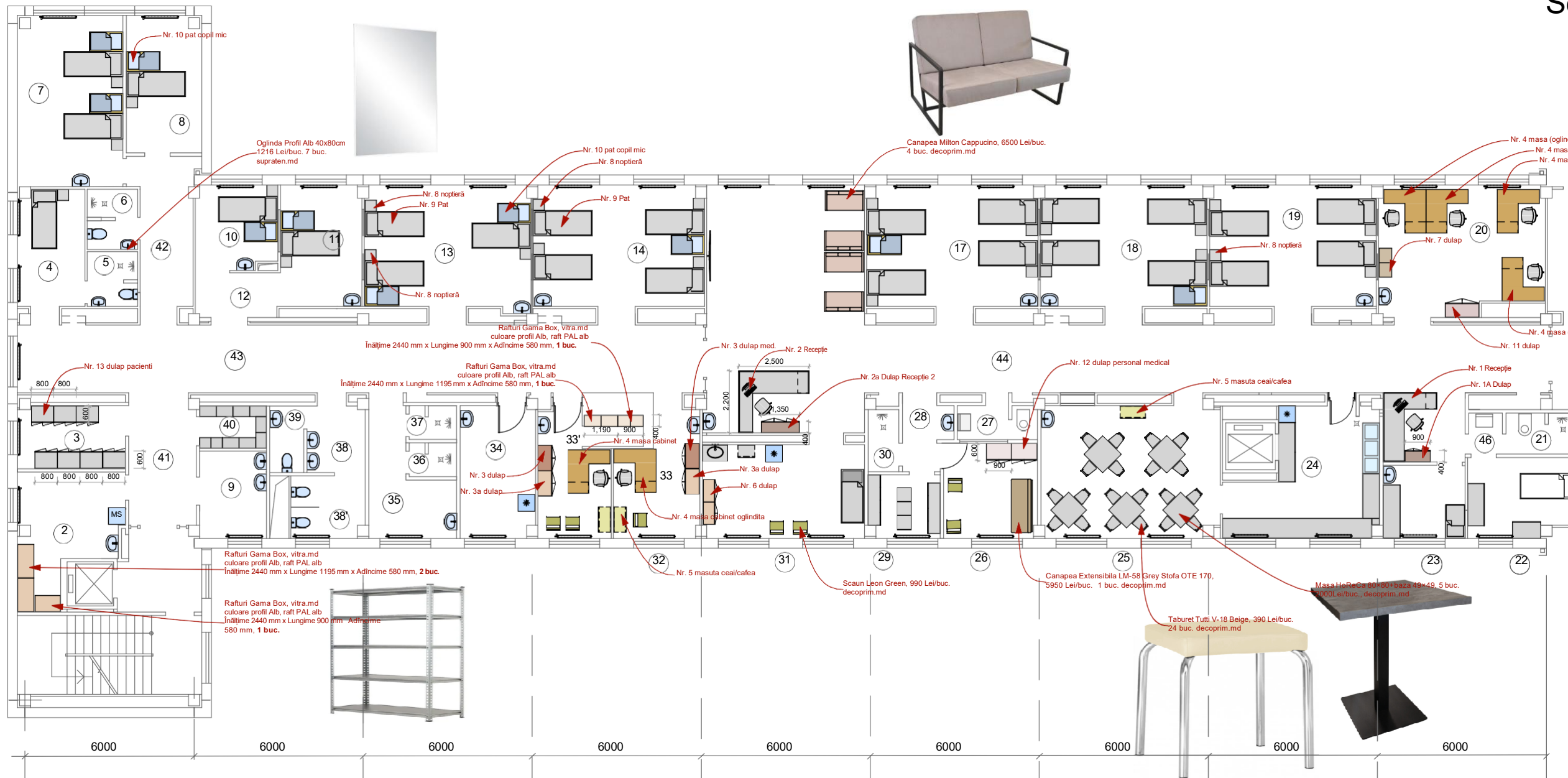
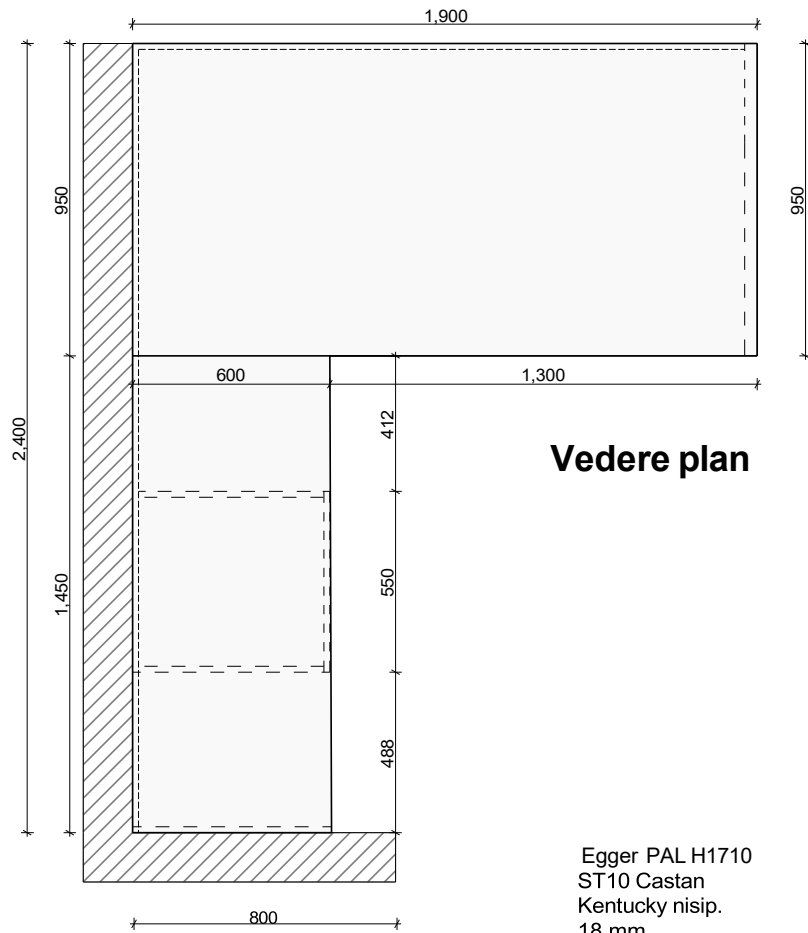


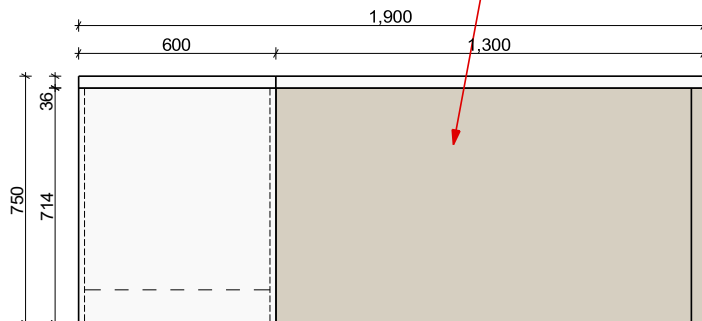
Sectia de pulmonologie



1	Depozit
2	Sora economa
3	Vestiar
4	Salon
5	Grup sanitar -Dus
6	Grup sanitar -Dus
7	Salon
8	Salon
9	Depozit
10	Salon
11	Salon
12	Hol
13	Salon
14	Salon
15	Cabinet medical
16	Cabinet medical
17	Salon
18	Salon
19	Salon
20	Salon
21	Grup sanitar -Dus
22	Izolator
23	Izolator
24	Bufet
25	Sufragerie
26	Personal medical
27	Grup sanitar -
28	Hol
29	Vestiar personal medical
30	Dus
31	Sala proceduri
32	Sala proceduri
33	Sora majora
33'	Depozit
34	Cabinet medical catedra
35	Bloc sanitar
36	Camera dus
37	Camera dus
38	Hol grup sanitar
38'	Grup sanitar
39	Grup sanitar
40	Camera sanitara
41	Hol
42	Hol
43	Hol
44	Hol
45	Hol post medical
46	Hol

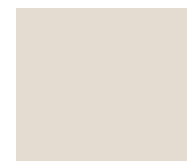


Vedere frontală



Nr. 1 Receptie

Nr bucati: 1



Egger PAL U705
ST9 Gri Angora
18 mm



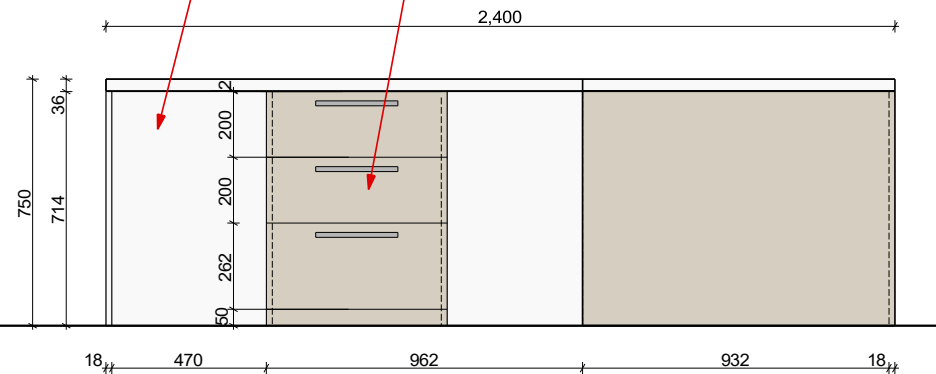
Egger PAL H1710
ST10 Castan
Kentucky nisip.
18 mm



Mâner 395, crom.
160mm

https://www.profimobila.md/ro/categorii/modern_si_high-tech/395

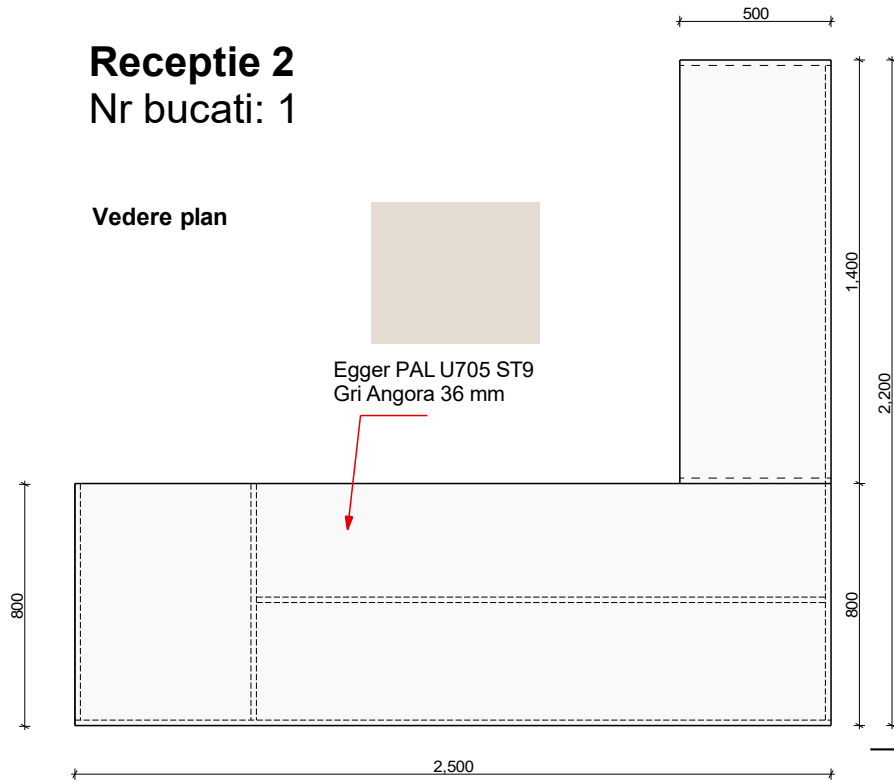
Vedere Laterală



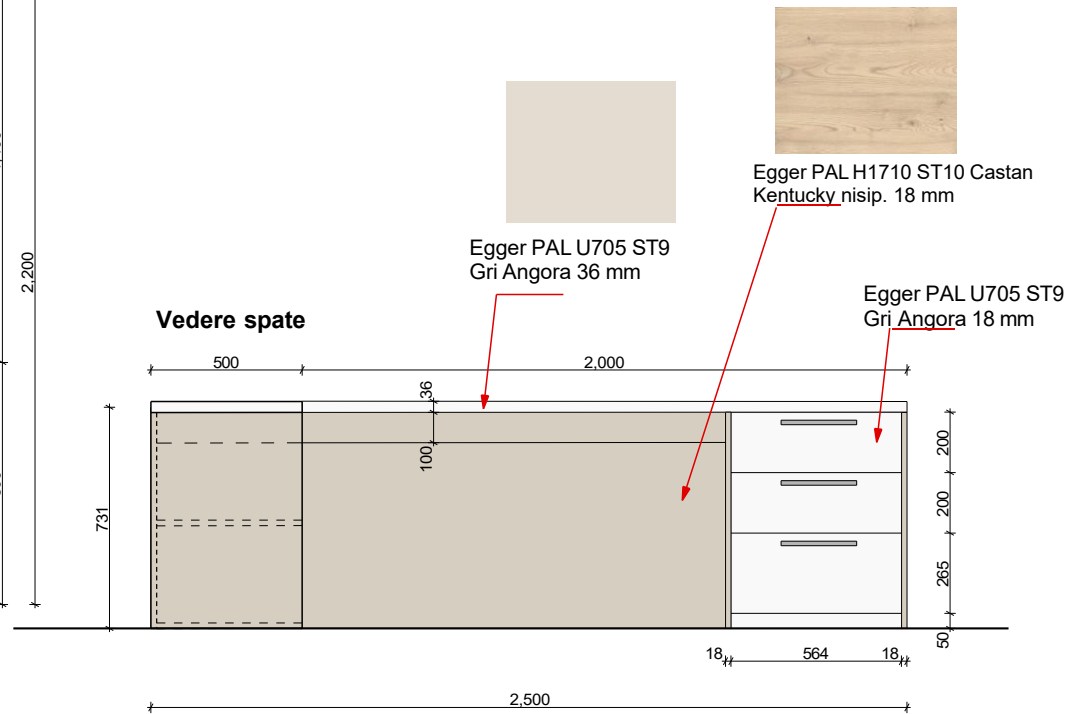
Receptie 2

Nr bucati: 1

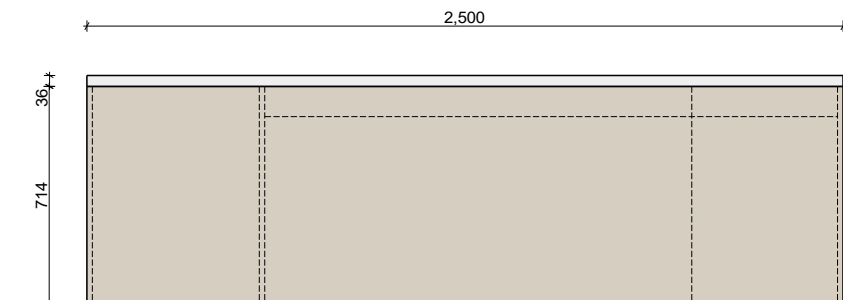
Vedere plan



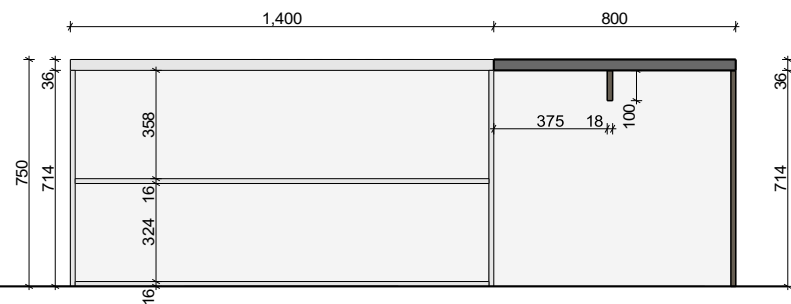
Vedere spate



Vedere frontală



Secțiune laterală



Măner 395, crom.
160mm

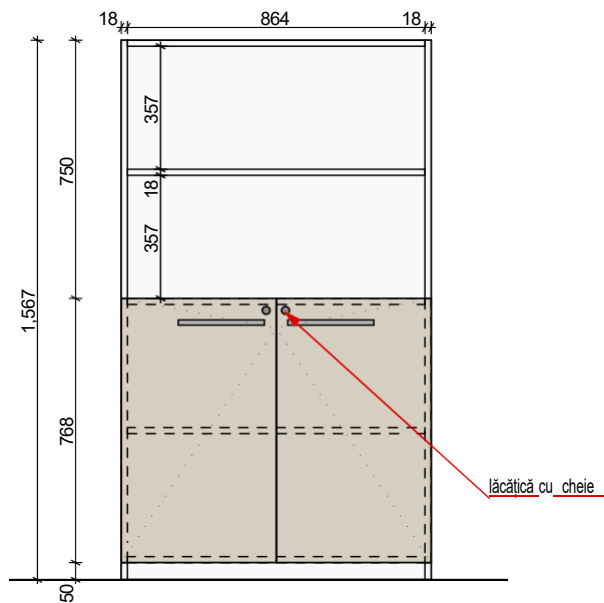
https://www.profimobila.md/ro/categorii/modern_si_high-tech/395



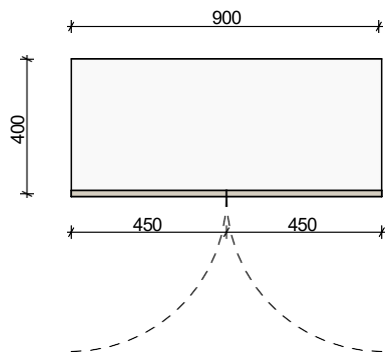
Nr. 1a Dulap

Nr bucati: 1

Vedere frontală



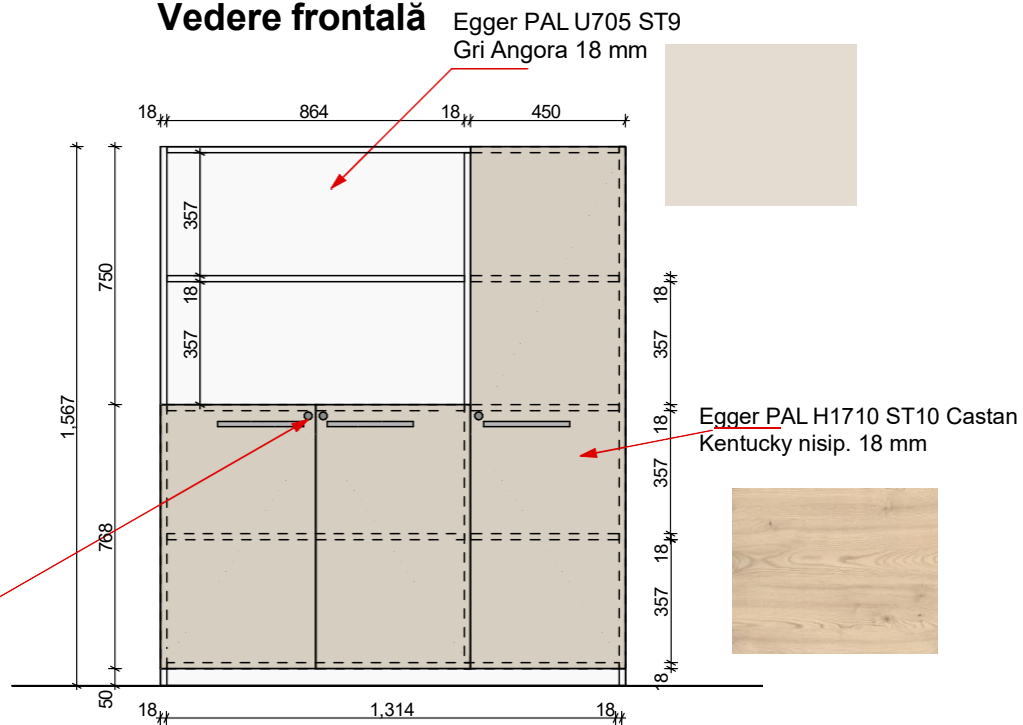
Vedere plan



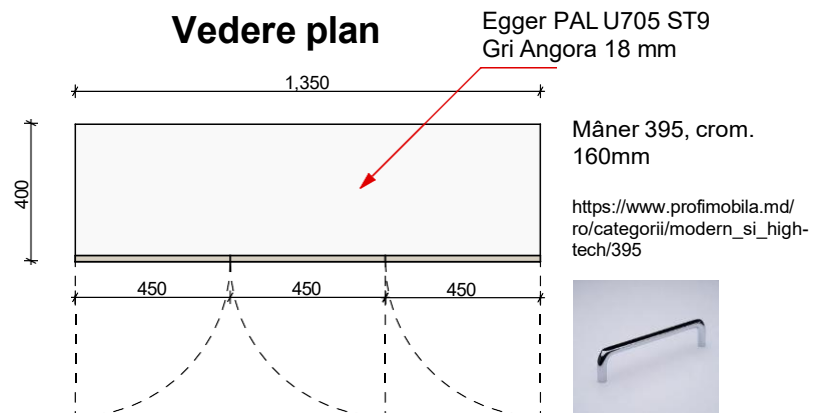
Nr. 2a Dulap

Nr bucati: 1

Vedere frontală



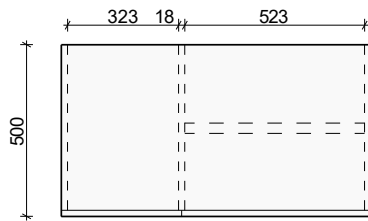
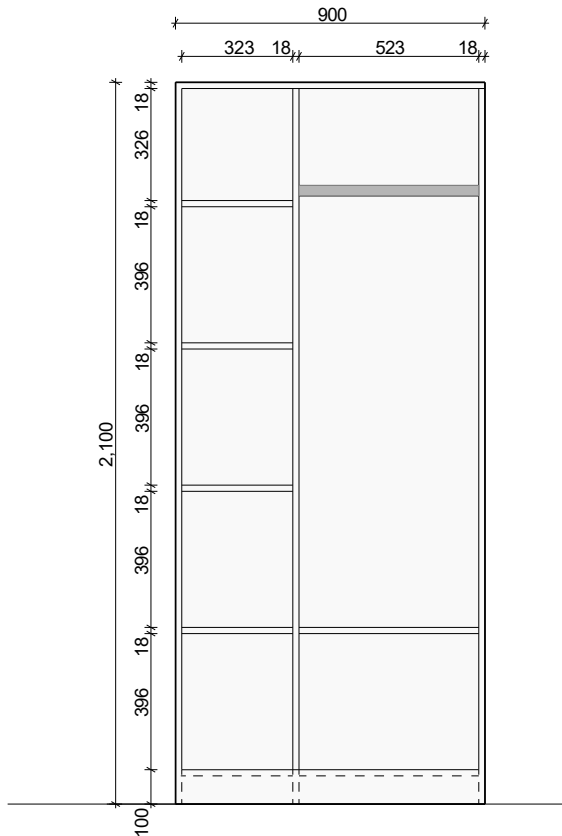
Vedere plan



Nr. 3 Dulap cab. med.

Nr bucati: 2

Vedere interior



Vedere plan



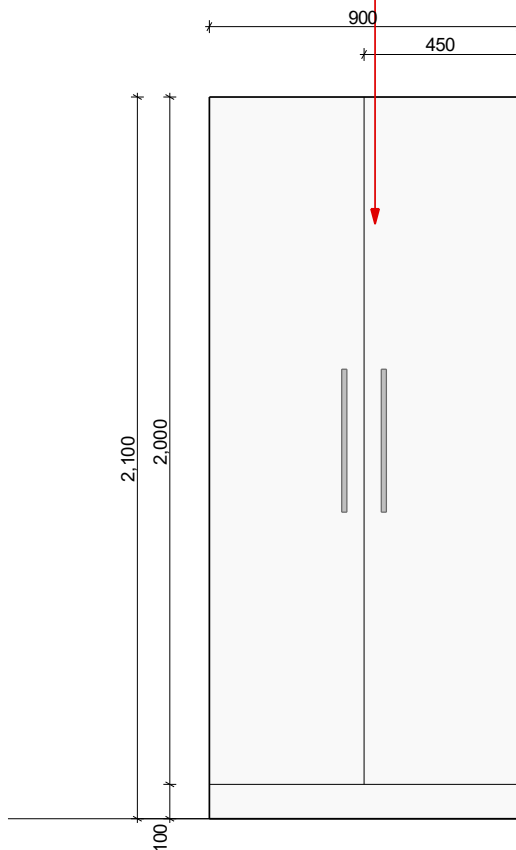
Mâner 1040.
416 mm, crom

https://profimobila.md/ru/kategorii/modern_i_hay_-_tek/1040_160_224_320_416

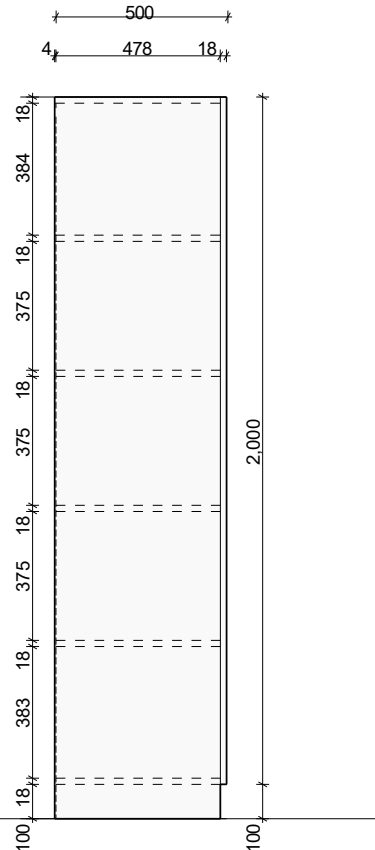


Egger PAL H1710
ST10 Castan
Kentucky nisip.
18 mm

Vedere frontală



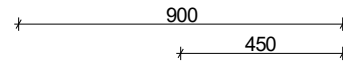
Vedere laterală



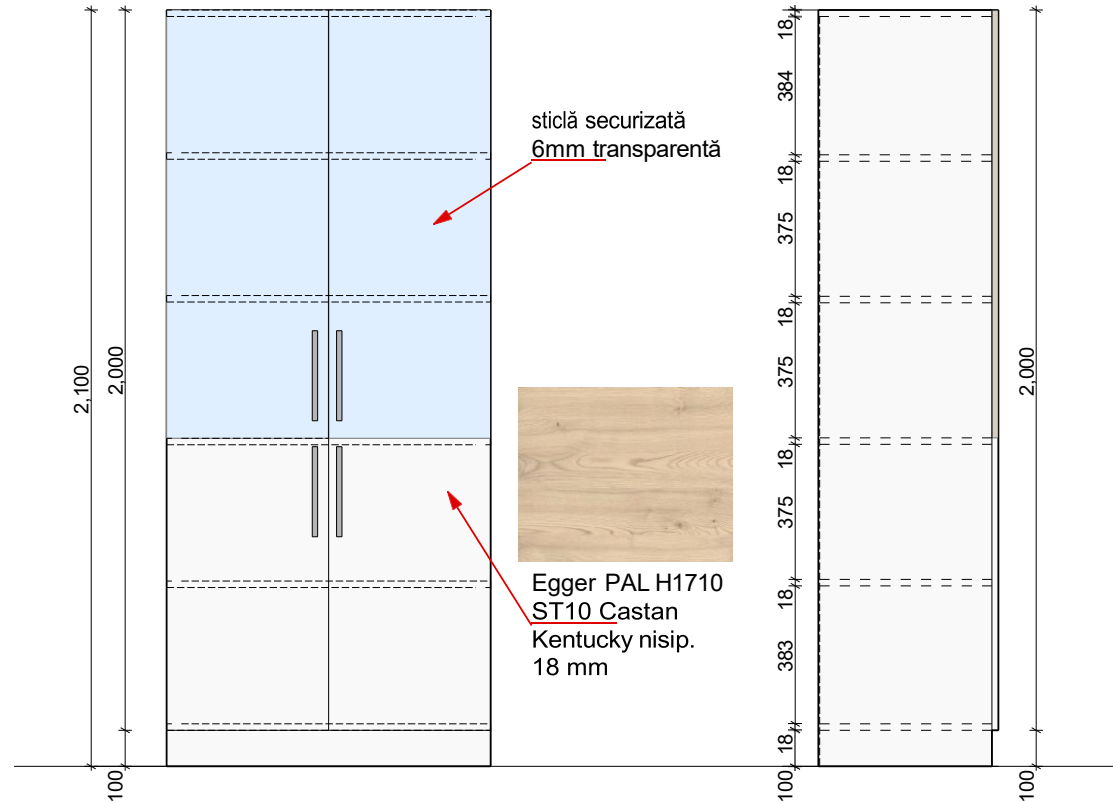
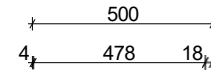
Nr. 3a Dulap cab. med.

Nr bucati: 2

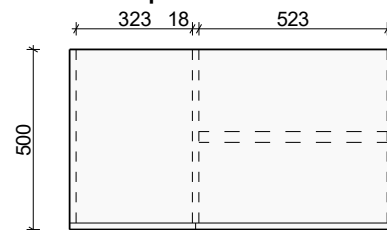
Vedere frontală



Vedere laterală



Vedere plan



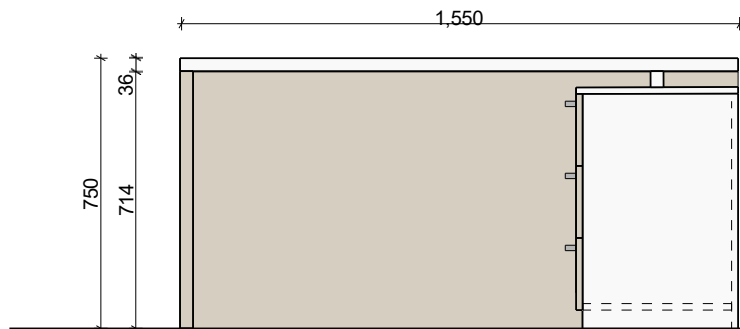
Mâner 1040.
416 mm, crom

https://profimobila.md/ru/kategorii/modern_i_hay_-_tek/1040_160_224_320_416

Nr. 4 Masa cab. med.

Nr bucăți: 6

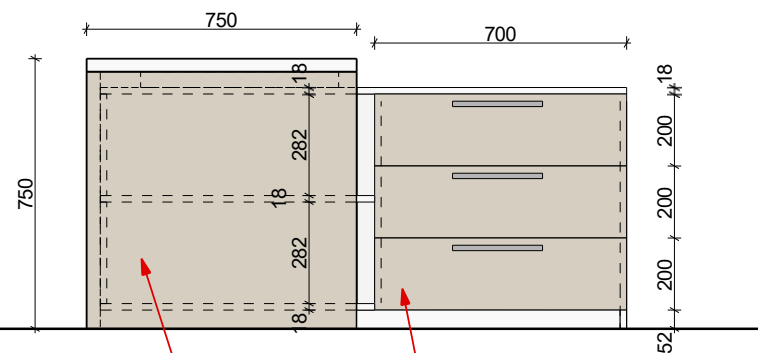
Vedere frontală



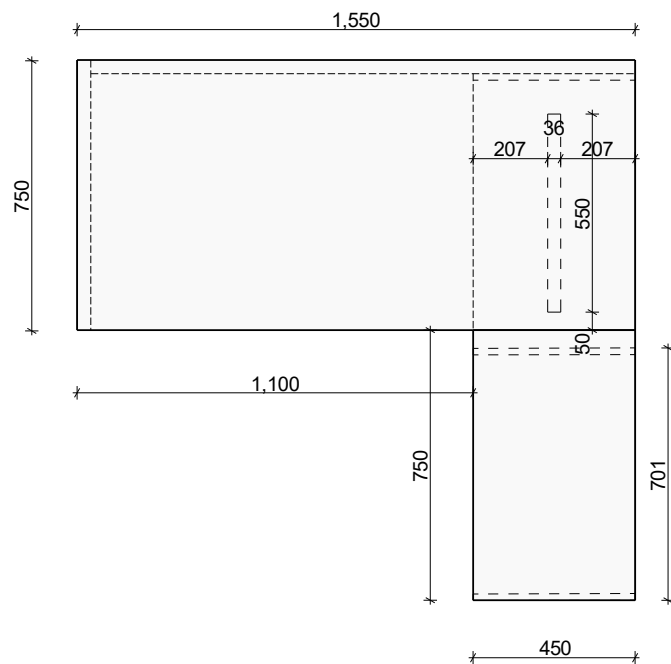
Nr. 4A Masa cab. med. (oglindită)

Nr bucăți: 6

Vedere laterală



Vedere plan



Mâner 395, crom. 160mm
https://www.profimobila.md/ro/categorii/modern_si_high-tech/395



Egger PAL U705
ST9 Gri Angora
18 mm

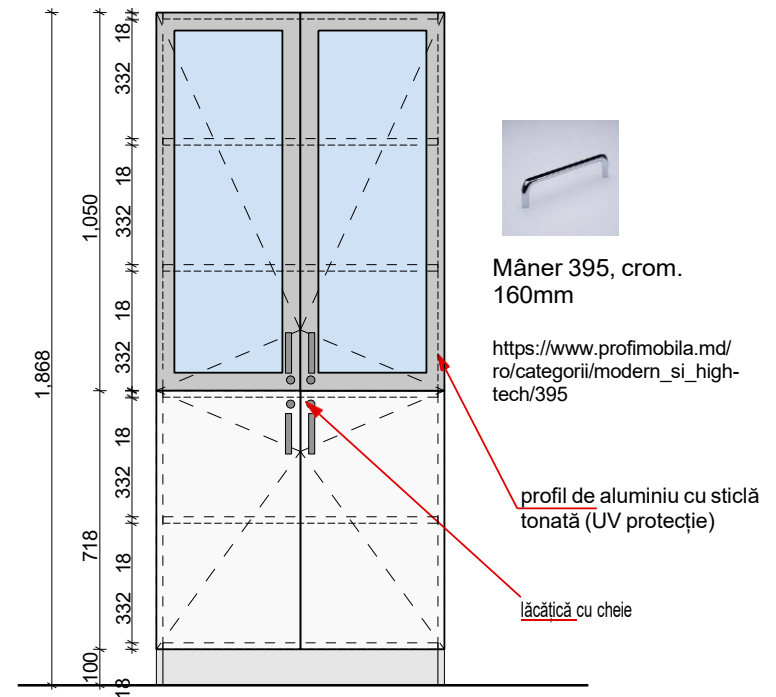


Egger PAL H1710
ST10 Castan
Kentucky nisip.
36 mm

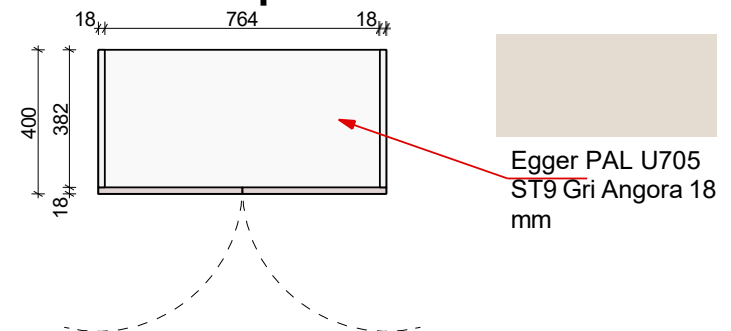


Nr. 6 Dulap secția proceduri Nr bucăți: 2

Vedere frontală



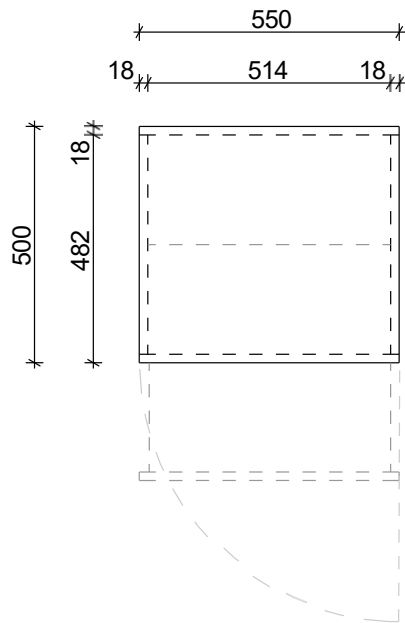
Vedere plan



Nr. 8 Noptiera Salon

Nr bucati: 27

Vedere plan



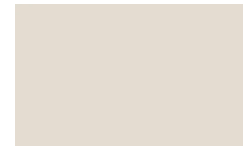
Mâner 395, crom.
160mm



https://www.profimobila.md/ro/categorii/modern_si_high-tech/395

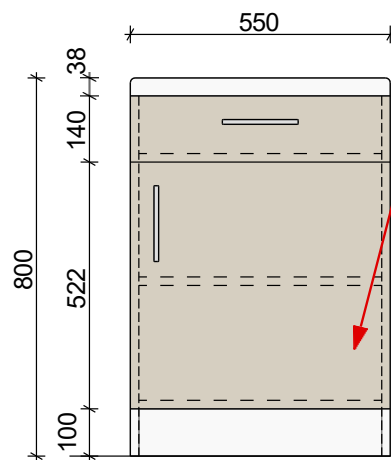


Egger PAL H1357
ST10 Stejar Spree gri
bej, 38 mm, 18 mm

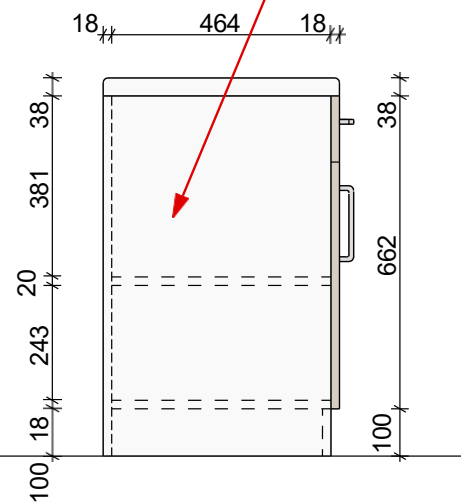


Egger PAL U705
ST9 Gri Angora
18 mm

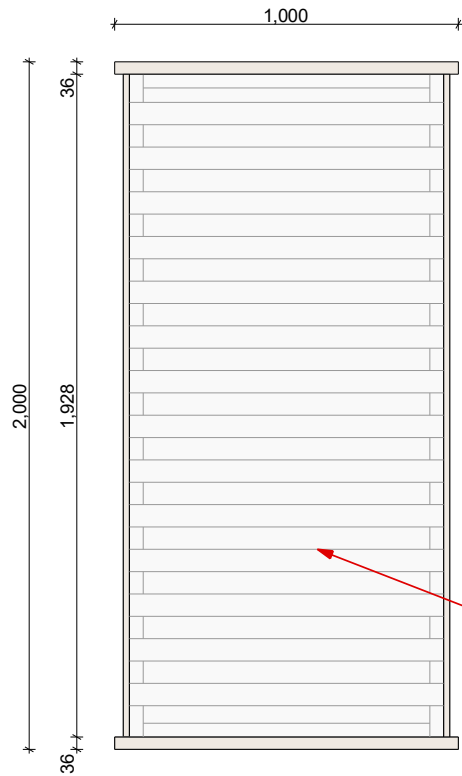
Vedere frontală



Vedere laterală



Vedere plan



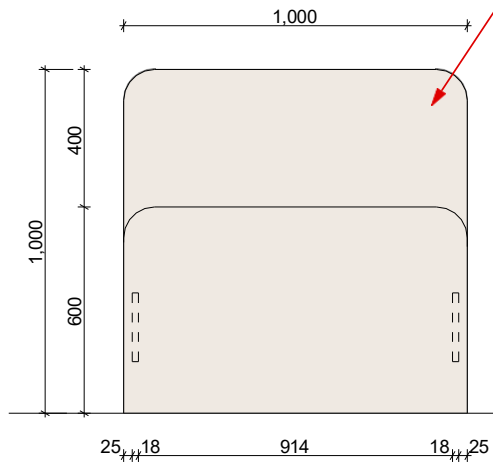
Nr. 9 Pat - Salon

Nr bucati: 23



Cadru de pat 1920 x 900

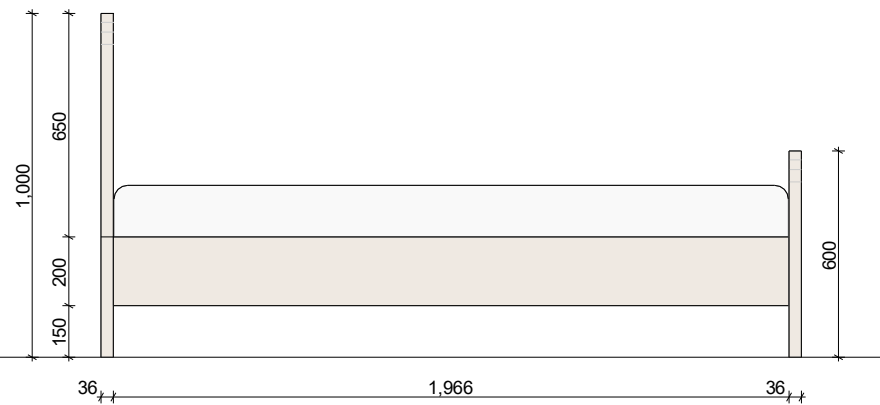
Vedere frontală



Egger PAL H1710 ST10
Castan Kentucky nisip.
36 mm



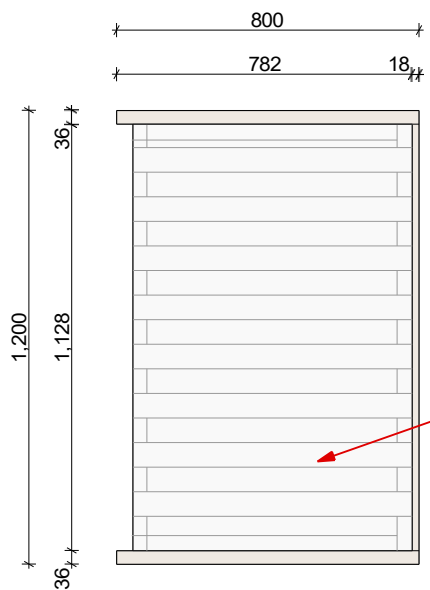
Vedere laterală



Nr. 10 Pat Copii - Salon

Nr bucati: 10

Vedere plan

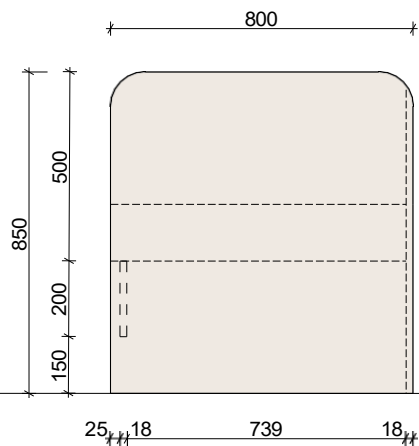


Cadru de pat 1220 x 730

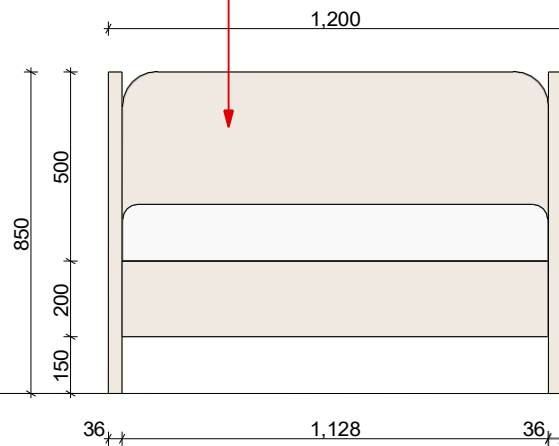


Egger PAL H1710 ST10
Castan Kentucky nisip.
36 mm

Vedere frontală



Vedere laterală



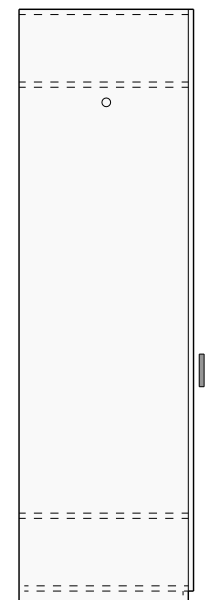
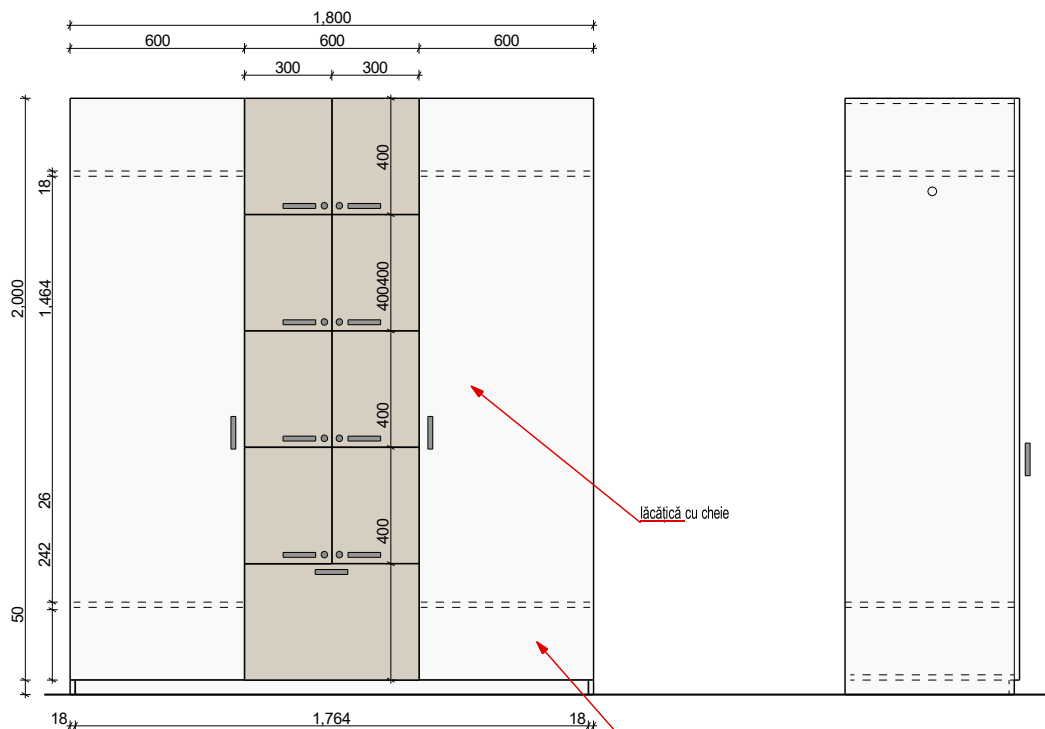
Nr. 12 Dulap surori medicale Și medici

Nr bucati: 2

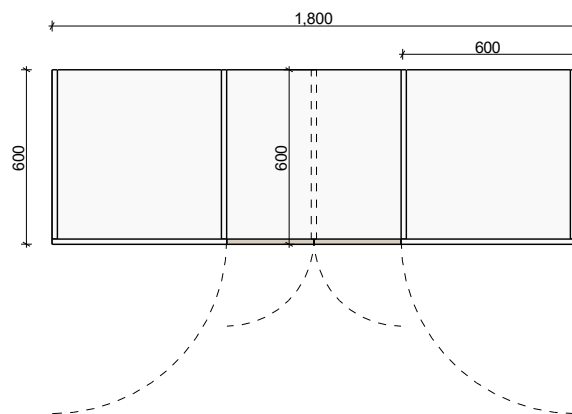
Vedere laterală

582 18

Vedere frontală



Vedere plan



Egger PAL U705 ST9
Gri Angora 18 mm

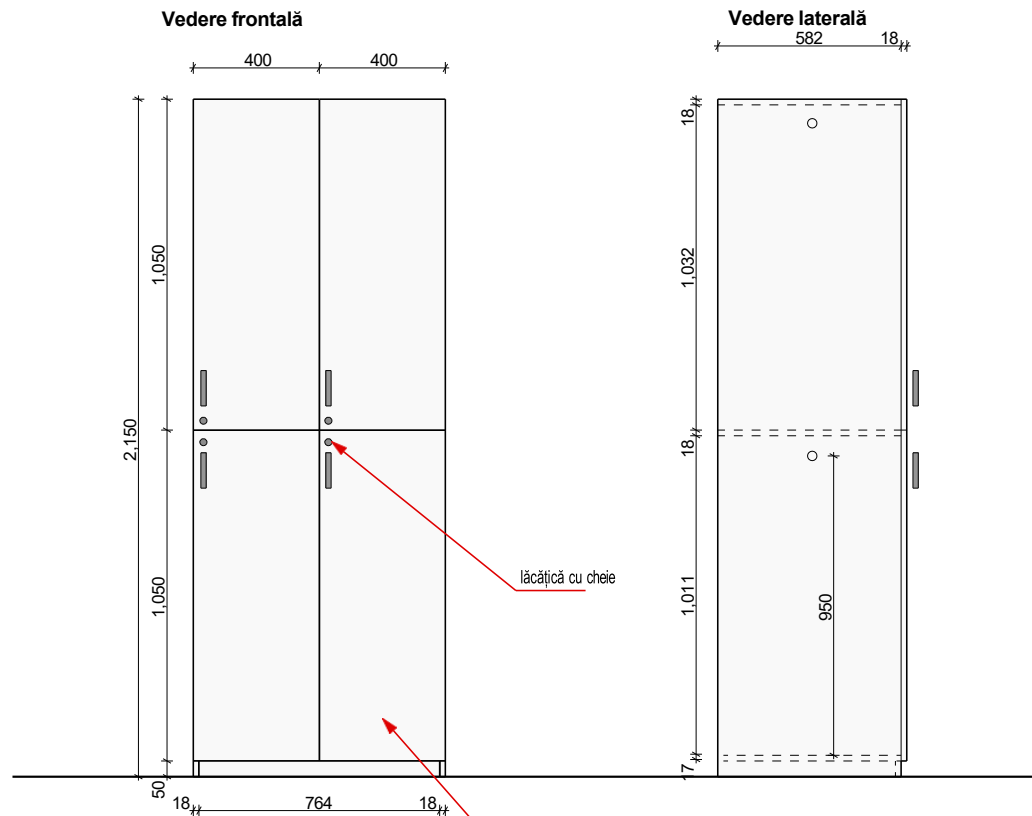


Mâner 395, crom.
160mm

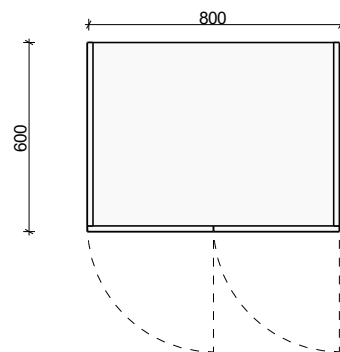
https://www.profimobila.md/ro/categorii/modern_si_high-tech/395

Nr. 13 Dulap vestiar

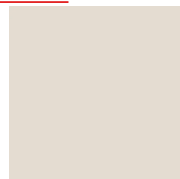
Nr bucati: 7



Vedere plan



Egger PAL U705 ST9
Gri Angora 18 mm



Mâner 395, crom.
160mm

https://www.profimobila.md/ro/categorii/modern_si_high-tech/395