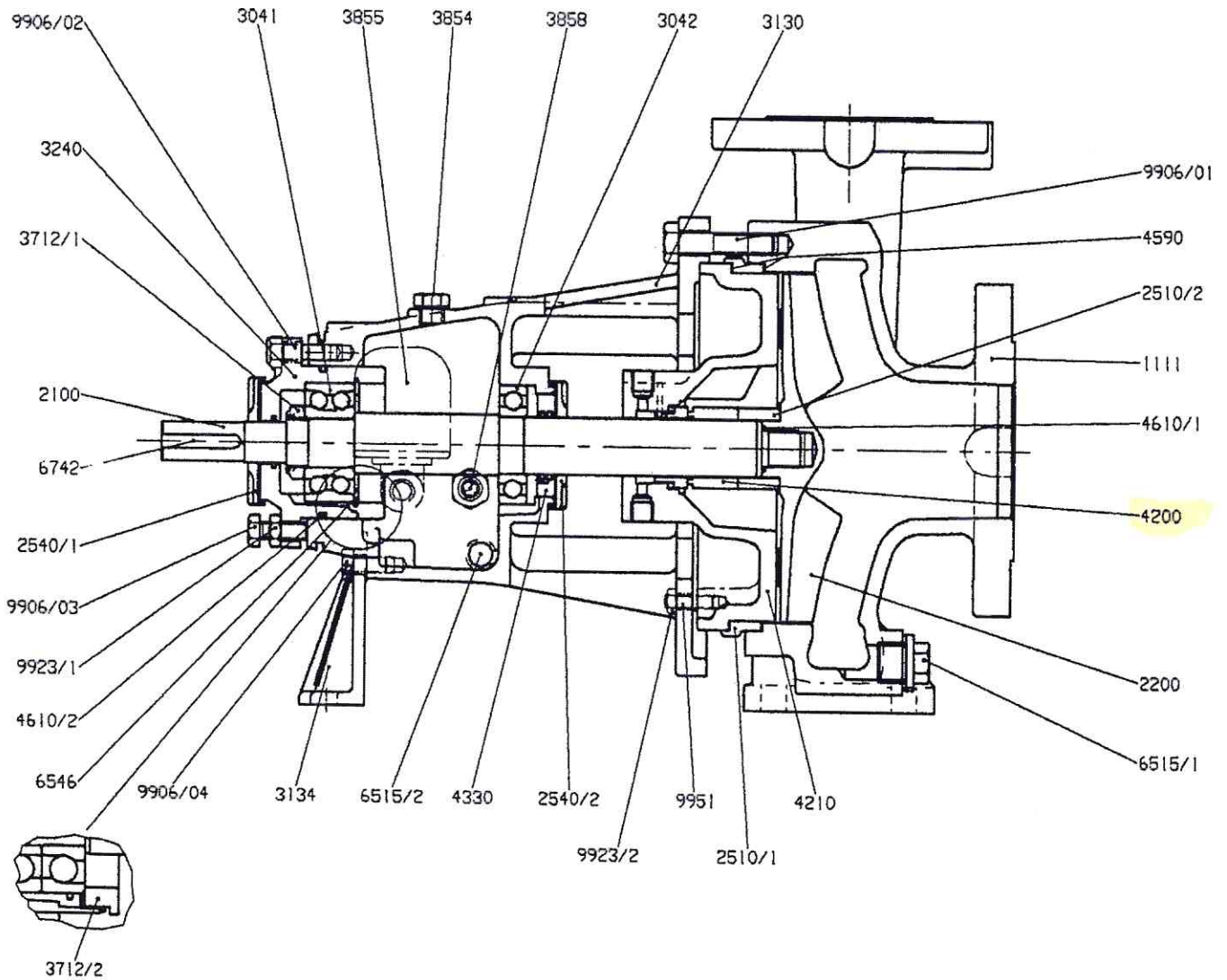


20.2 CPXR



Europump no.	Description
1111	Pump casing
2100	Shaft
2200	Impeller
2510/1	Distance ring
2510/2	Seal setting collar (L1K)
2540/1	Flinger (liquid) drive side
2540/2	Flinger (liquid) pump side
3041	Bearing (drive side) ang. cont.
3042	Bearing (pump side) ball
3130	Bearing housing
3134	Support foot
3240	Bearing carrier
3712/1	Bearing nut
3712/2	Bearing nut outer
3854	Oil filler plug (oil lubrication only)
3855	Constant level oiler (oil lubrication only)
3858	Sight glass (oil lubrication only)
4200	Mechanical seal
4210	Mechanical seal housing

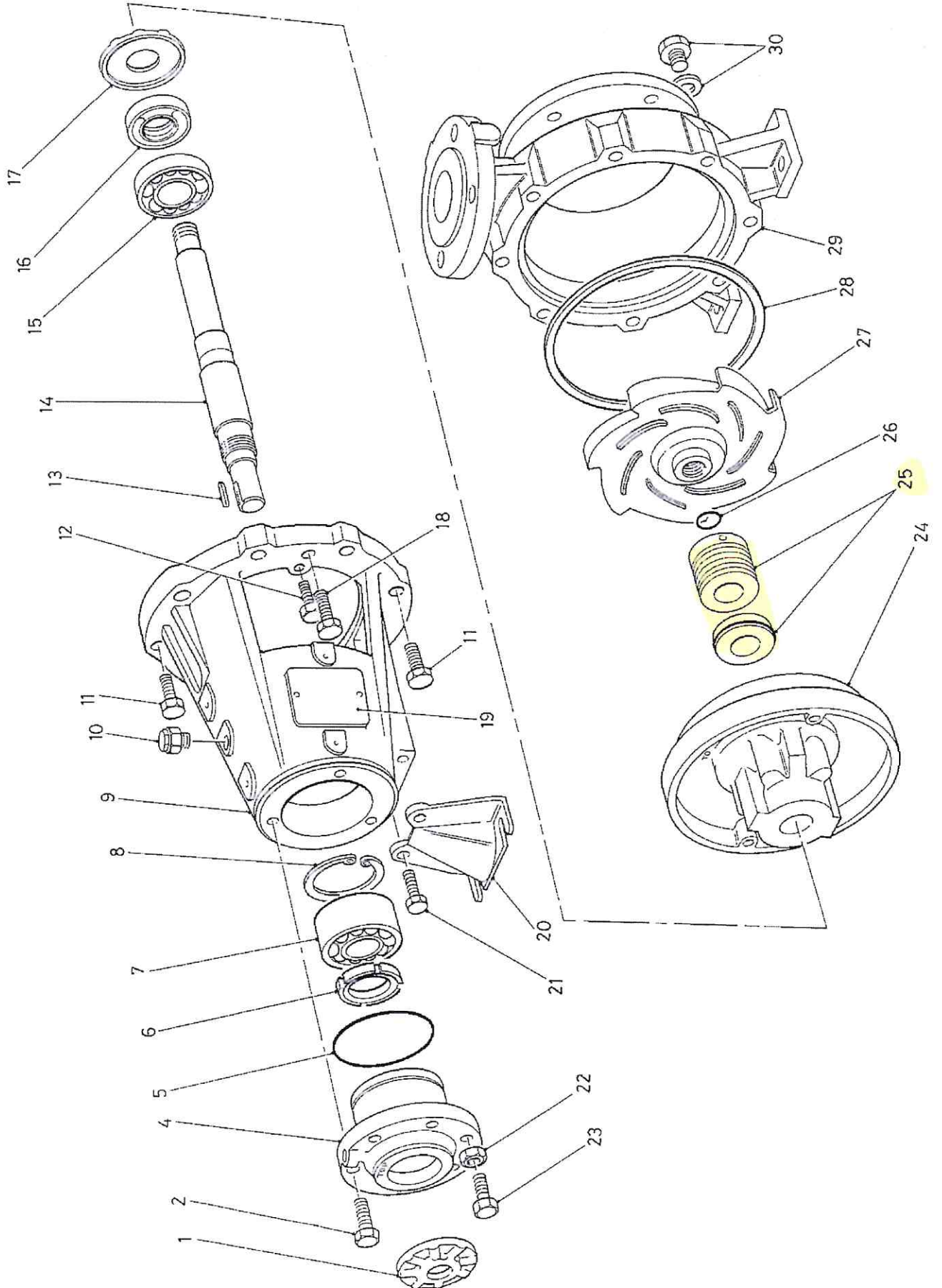
4330	Labyrinth seal (pump side)
4590	Pump casing gasket
4610/1	O-ring
4610/2	O-ring
6515/1	Drain plug (optional)
6515/2	Drain plug (magnetic) (oil lubrication only)
6546	Inner circlip
6742	Coupling key
9906/01	Hex screw
9906/02	Hex screw
9906/03	Hex screw
9906/04	Hex screw
9923/1	Hex nut
9923/2	Hex nut
9951	Stud

Items not illustrated

2450	Shaft sleeve
3853	Grease nipples (grease lubrication only)

**20 SECTIONAL ARRANGEMENT DRAWINGS AND PARTS LISTS**

**20.1 CPX and CPXN**



Item no	Description	Europump part no
1	Drive side liquid flinger	2540/1
2	Hex screw	9906/2
3*	Shaft sleeve	2450
4	Bearing carrier	3240
5	O-ring	4610/2
6	Bearing nut	3712/1
7	Drive side bearing	3041
8	Inner circlip	6546
9	Bearing housing	3130
10	Oil filler plug/breather (customer option)	3854
11	Hex screw	9906/1
12	Hex screw	9906/5
13	Coupling key	6742
14	Shaft	2100
15	Pump side bearing	3042
16	Pump side labyrinth seal	4300/2
17	Pump side liquid flinger	2540/2
18	Jacking screw (use item 11)	6575
19	Nameplate	-
20	Support foot	3134
21	Hex screw	9906/4
22	Hex nut	9923
23	Hex screw (jacking point)	9906/3
24	Mechanical seal housing	4210
25	Mechanical seal	4200
26	O-ring	4610/1
27	Impeller	2200
28	Pump casing gasket	4590/1
29	Pump casing (Note: CPXN has centre line mounting feet)	1111
30	Casing drain plug and sealing washer (customer option)	6515

\* Not illustrated: 2450 optional shaft sleeve