

32.52

3.40

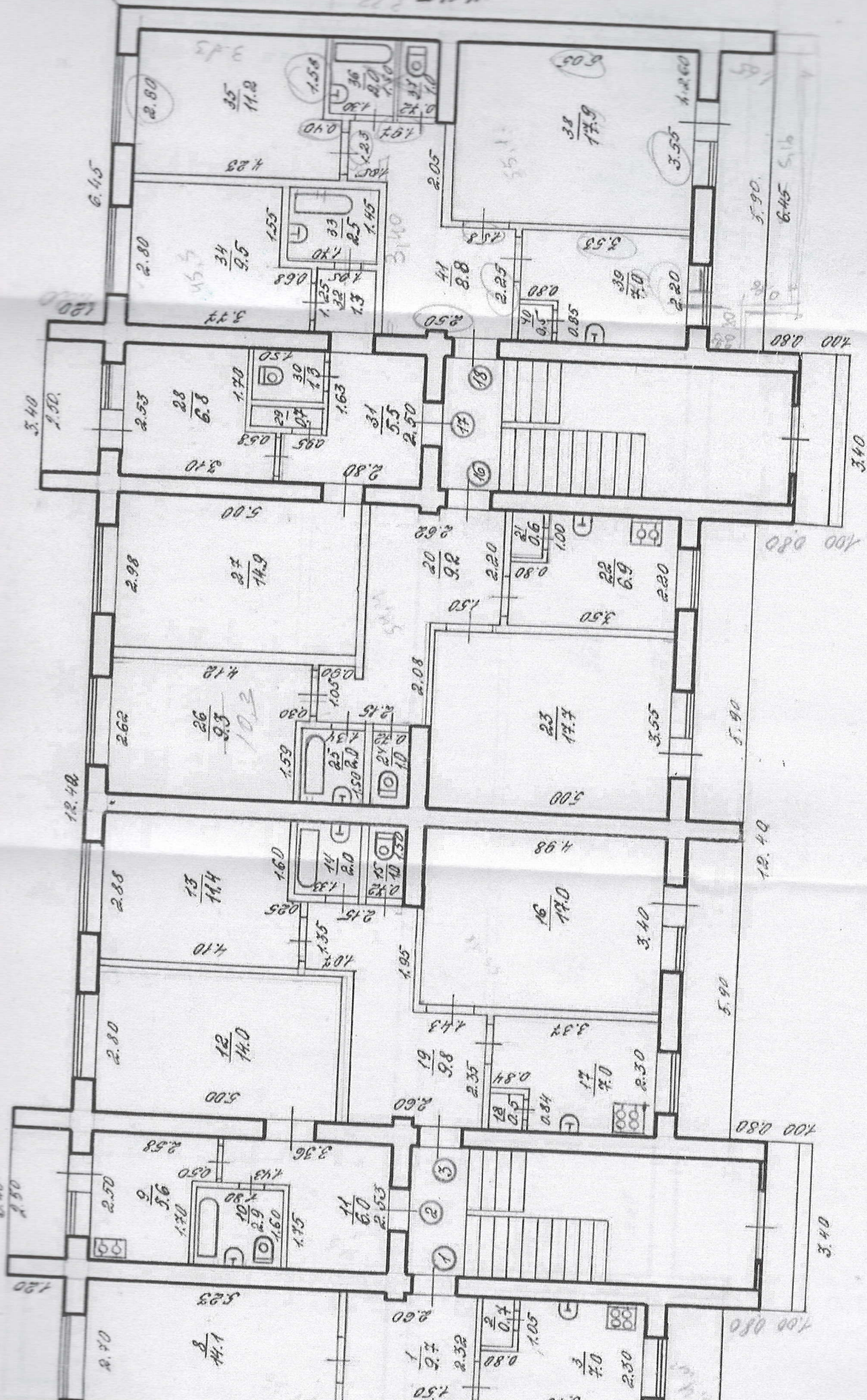
1.20

8.00



32.12

13.25



120

6.45

2.80

2.53

2.80

2.98

2.62

2.88

2.80

2.50

2.58

2.70

4.90

2.80

2.80

2.80

2.53

2.80

2.98

2.62

2.88

2.80

2.50

2.58

2.70

4.90

2.80

2.80

2.80

2.53

2.80

2.98

2.62

2.88

2.80

2.50

2.58

2.70

4.90

2.80

2.80

2.80

2.53

2.80

2.98

2.62

2.88

2.80

2.50

2.58

2.70

4.90

2.80

2.80

2.80

2.53

2.80

2.98

2.62

2.88

2.80

2.50

2.58

2.70

4.90

2.80

2.80

2.80

2.53

2.80

2.98

2.62

2.88

2.80

2.50

2.58

2.70

4.90

2.80

2.80

2.80

2.53

2.80

2.98

2.62

2.88

2.80

2.50

2.58

2.70

4.90

2.80

2.80

2.80

2.53

2.80

2.98

2.62

2.88

2.80

2.50

2.58

2.70

4.90

2.80

2.80

2.80

2.53

2.80

2.98

2.62

2.88

2.80

2.50

2.58

2.70

4.90

2.80

2.80

2.80

2.53

2.80

2.98

2.62

2.88

2.80

2.50

2.58

2.70

4.90

2.80

2.80

2.80

2.53

2.80

2.98

2.62

2.88

2.80

2.50

2.58

2.70

4.90

2.80

2.80

2.80

2.53

2.80

2.98

2.62

2.88

2.80

2.50

2.58

2.70

4.90

2.80

2.80

2.80

2.53

2.80

2.98

2.62

2.88

2.80

2.50

2.58

2.70

4.90

2.80

2.80

2.80

2.53

2.80

2.98

2.62

2.88

2.80

2.50

2.58

2.70

4.90

2.80

2.80

2.80

2.53

2.80

2.98

2.62

2.88

2.80

2.50

2.58

2.70

4.90

2.80

2.80

2.80

2.53

2.80

2.98

2.62

2.88

2.80

2.50

2.58

2.70

4.90

2.80

2.80

2.80

2.53

2.80

2.98

2.62

2.88

2.80

2.50

2.58

2.70

4.90



13.95

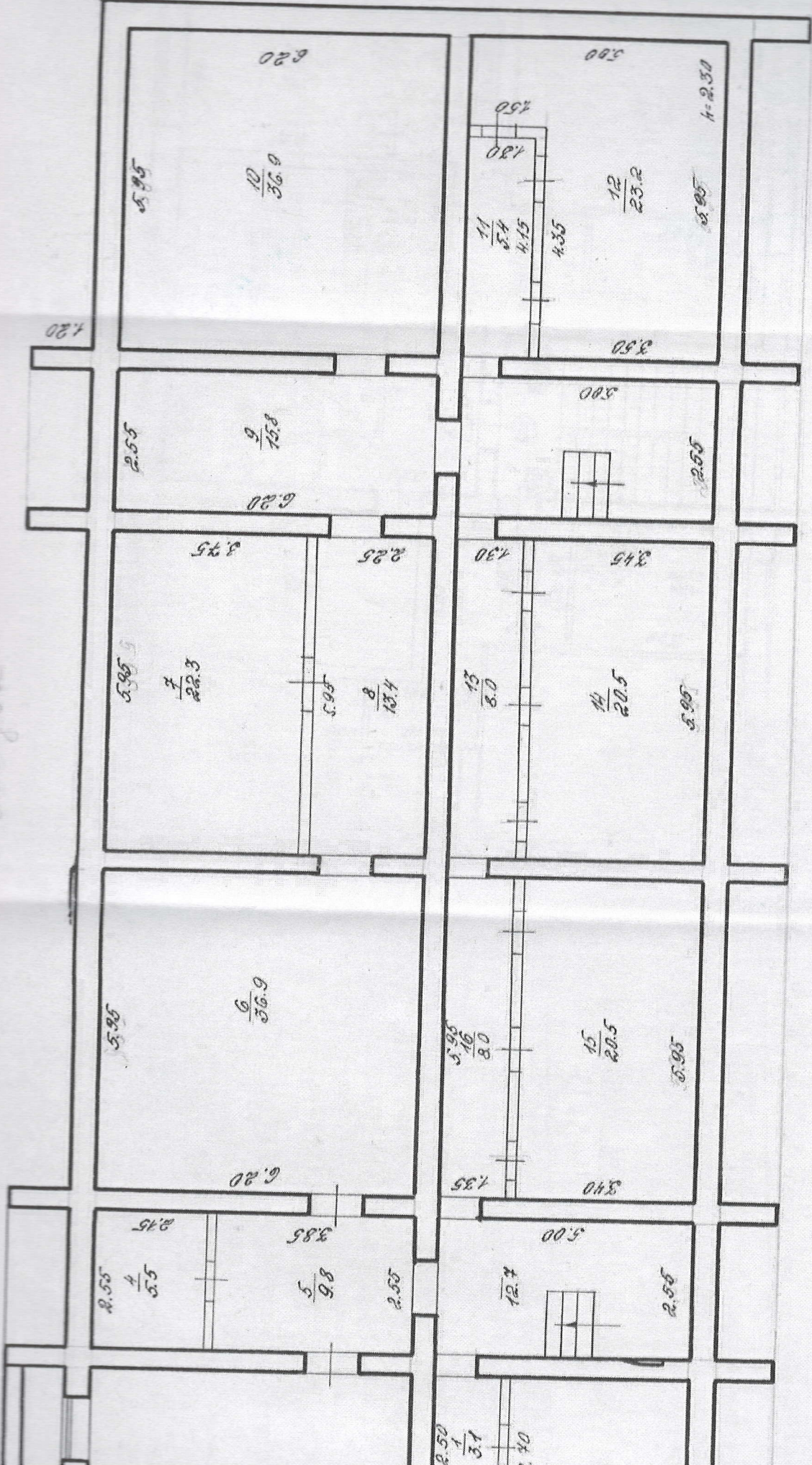
Stogba

32.52

8.00

3.40

1.20



Room 220:  $\frac{10}{36.0}$ , 5.95

Room 220:  $\frac{9}{15.8}$ , 2.55

Room 220:  $\frac{7}{22.3}$ , 5.95, 3.75, 2.25,  $\frac{8}{13.4}$ , 5.95

Room 220:  $\frac{6}{36.9}$ , 5.95, 6.20

Room 220:  $\frac{4}{5.5}$ , 2.75, 3.85,  $\frac{5}{9.8}$ , 2.55

Room 500:  $\frac{11}{54}$ , 4.15, 4.35, 1.80, 1.50, 3.50,  $\frac{12}{23.2}$ , 5.95, 4=2.30

Room 500: 2.55

Room 345:  $\frac{13}{8.0}$ , 4.30, 3.45,  $\frac{14}{20.5}$ , 5.95

Room 340:  $\frac{15}{20.5}$ , 5.95, 1.35, 3.40, 5.00

Room 340: 2.55, 12.7

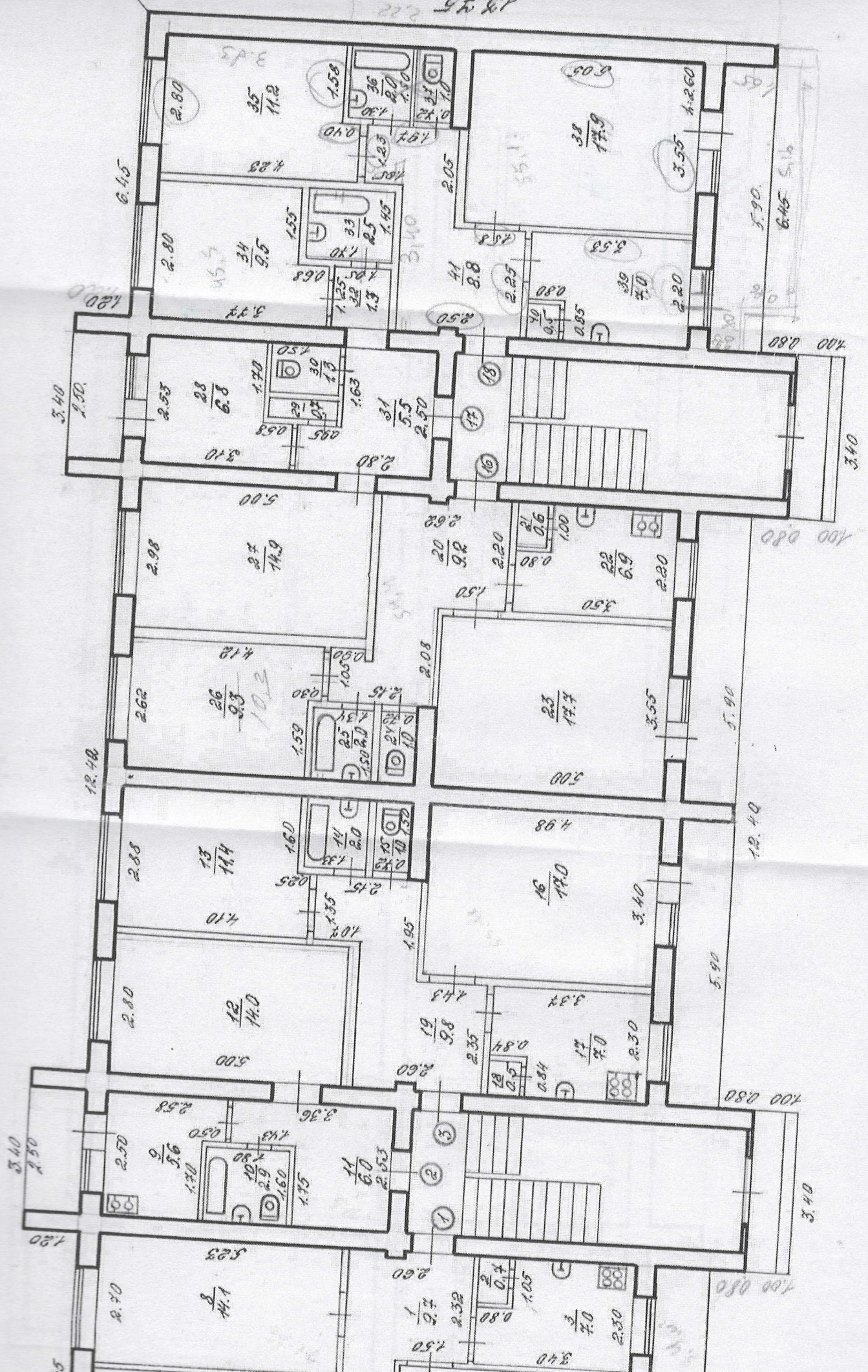
Room 340:  $\frac{1}{3.1}$ , 2.50, 1.40



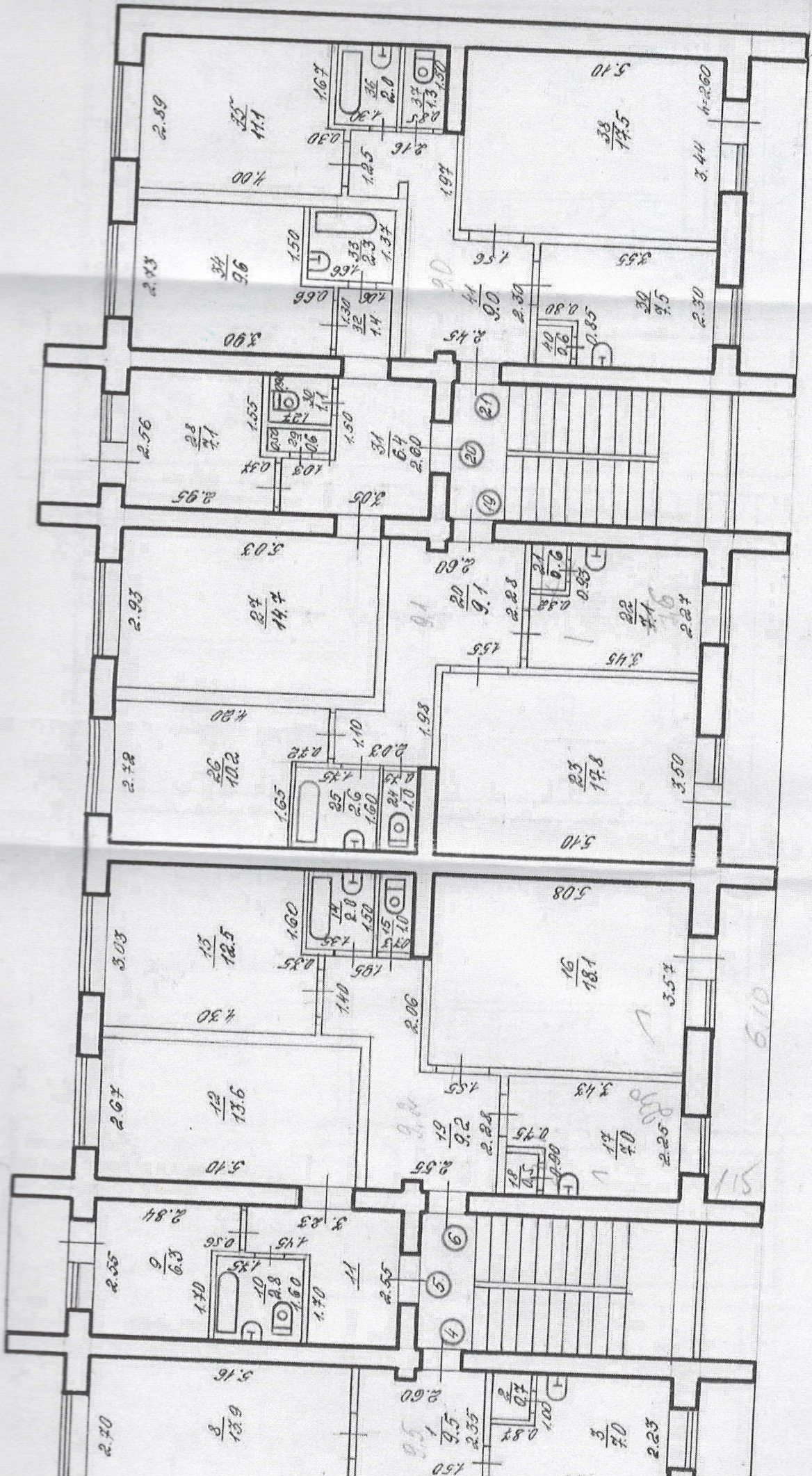
I smaxno 12.12

32.12

13.45







2.59  
 $\frac{25}{11.1}$   
1.00  
1.67  
1.30  
2.0  
1.30  
1.30

2.43  
 $\frac{34}{9.6}$   
1.50  
1.30  
1.30  
1.4  
1.37  
1.37  
1.25  
1.25  
1.97

2.56  
 $\frac{28}{7.1}$   
1.55  
1.50  
1.50  
1.03  
1.03  
1.03  
1.03  
1.03  
1.03

2.93  
 $\frac{28}{7.1}$   
14.4  
5.03  
2.93  
4.80  
1.03  
1.10  
1.93

2.78  
 $\frac{26}{10.2}$   
1.65  
1.65  
1.65  
1.65  
1.65  
1.65  
1.65  
1.65  
1.65

3.03  
 $\frac{13}{12.5}$   
4.30  
1.60  
1.60  
1.60  
1.60  
1.60  
1.60  
1.60  
1.60

2.67  
 $\frac{12}{13.6}$   
5.10  
1.40  
1.40  
1.40  
1.40  
1.40  
1.40  
1.40  
1.40

2.55  
 $\frac{9}{6.3}$   
2.84  
1.40  
1.40  
1.40  
1.40  
1.40  
1.40  
1.40  
1.40

2.70  
 $\frac{8}{13.9}$   
5.16  
1.70  
1.70  
1.70  
1.70  
1.70  
1.70  
1.70  
1.70

2.55  
 $\frac{19}{9.2}$   
2.28  
2.28  
2.28  
2.28  
2.28  
2.28  
2.28  
2.28  
2.28

2.55  
 $\frac{17}{8.0}$   
2.25  
2.25  
2.25  
2.25  
2.25  
2.25  
2.25  
2.25  
2.25

2.70  
 $\frac{3}{7.0}$   
2.23  
0.87  
0.87  
0.87  
0.87  
0.87  
0.87  
0.87  
0.87

5.10  
 $\frac{33}{17.5}$   
3.44  
4=2.60  
3.44  
3.44  
3.44  
3.44  
3.44  
3.44

3.45  
 $\frac{41}{9.0}$   
2.30  
2.30  
2.30  
2.30  
2.30  
2.30  
2.30  
2.30  
2.30

3.05  
 $\frac{31}{6.4}$   
2.60  
2.60  
2.60  
2.60  
2.60  
2.60  
2.60  
2.60  
2.60

3.45  
 $\frac{22}{7.1}$   
2.27  
2.27  
2.27  
2.27  
2.27  
2.27  
2.27  
2.27  
2.27

3.45  
 $\frac{23}{17.8}$   
3.50  
3.50  
3.50  
3.50  
3.50  
3.50  
3.50  
3.50  
3.50

5.10  
 $\frac{16}{18.1}$   
3.57  
3.57  
3.57  
3.57  
3.57  
3.57  
3.57  
3.57  
3.57

5.08  
 $\frac{16}{18.1}$   
3.57  
3.57  
3.57  
3.57  
3.57  
3.57  
3.57  
3.57  
3.57

2.25  
 $\frac{17}{8.0}$   
2.25  
2.25  
2.25  
2.25  
2.25  
2.25  
2.25  
2.25  
2.25

2.55  
 $\frac{19}{9.2}$   
2.28  
2.28  
2.28  
2.28  
2.28  
2.28  
2.28  
2.28  
2.28

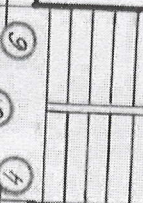
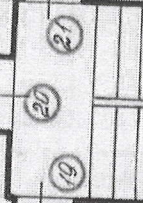
2.55  
 $\frac{17}{8.0}$   
2.25  
2.25  
2.25  
2.25  
2.25  
2.25  
2.25  
2.25  
2.25

2.70  
 $\frac{3}{7.0}$   
2.23  
0.87  
0.87  
0.87  
0.87  
0.87  
0.87  
0.87  
0.87

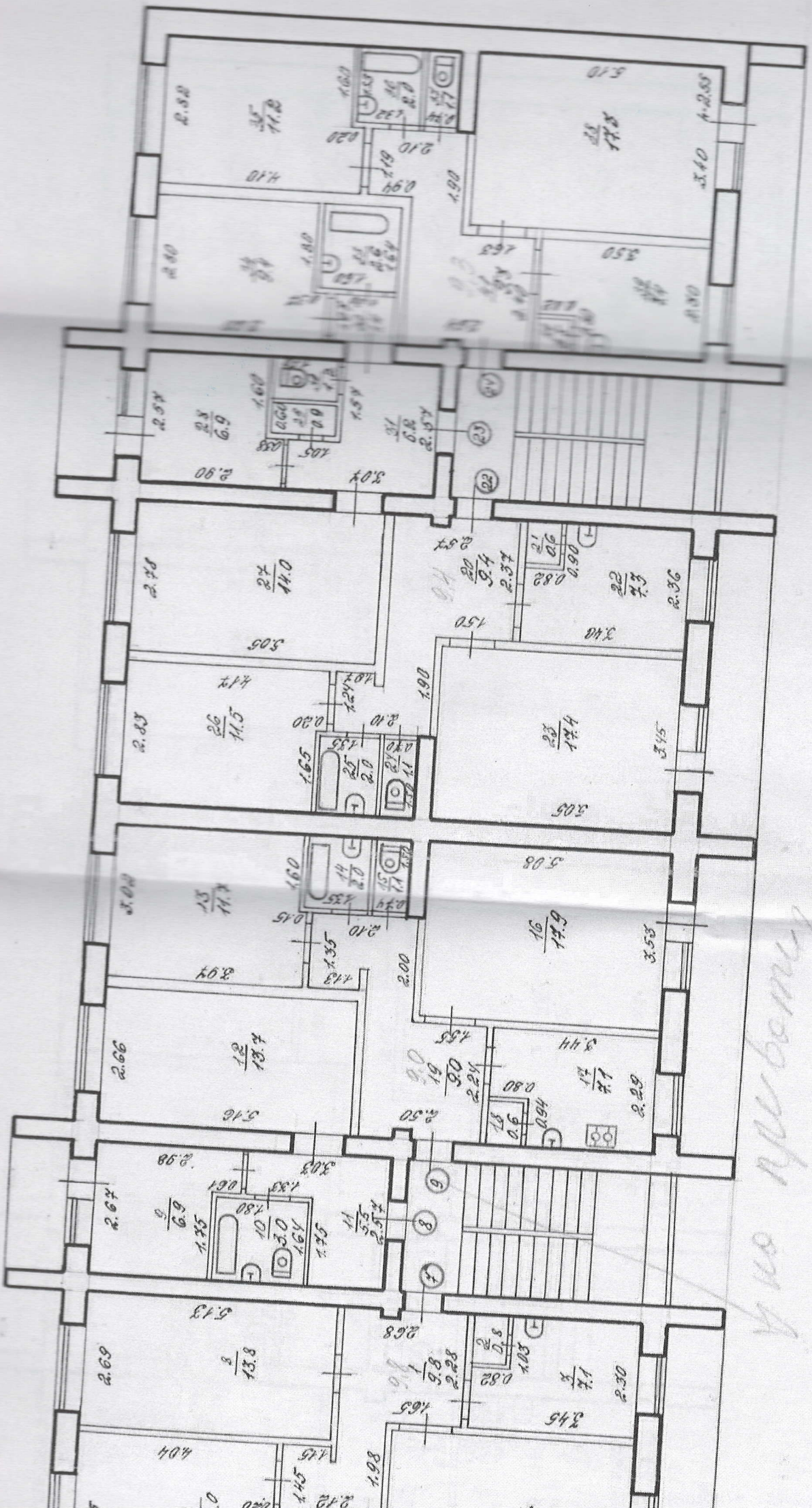
2.70  
 $\frac{3}{7.0}$   
2.23  
0.87  
0.87  
0.87  
0.87  
0.87  
0.87  
0.87  
0.87

6.10

5.11







*Handwritten note:* 100 mtr on A



bt. 340 *Depose* *Ungar*

