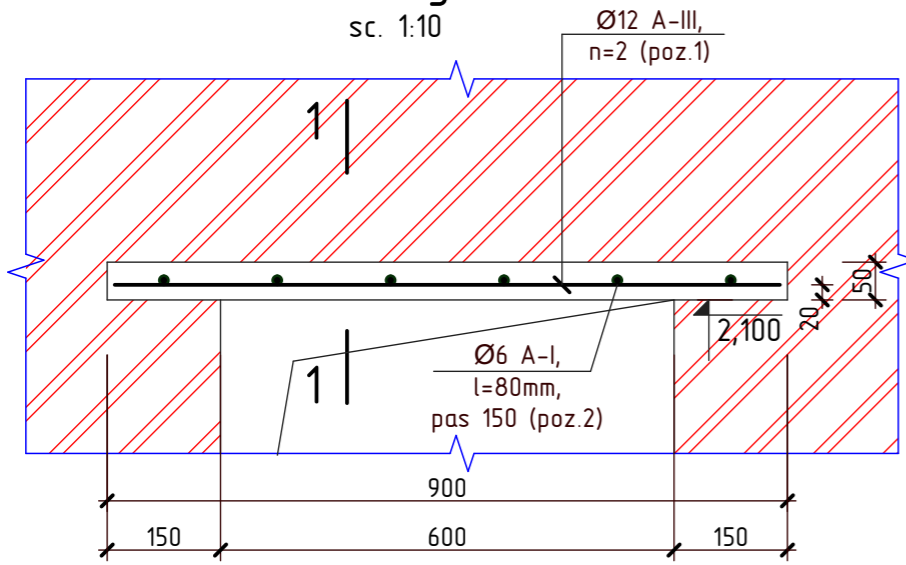


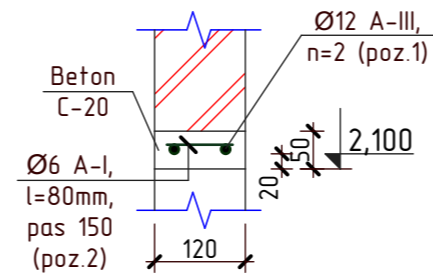
Buiandrug B-1

sc. 1:10



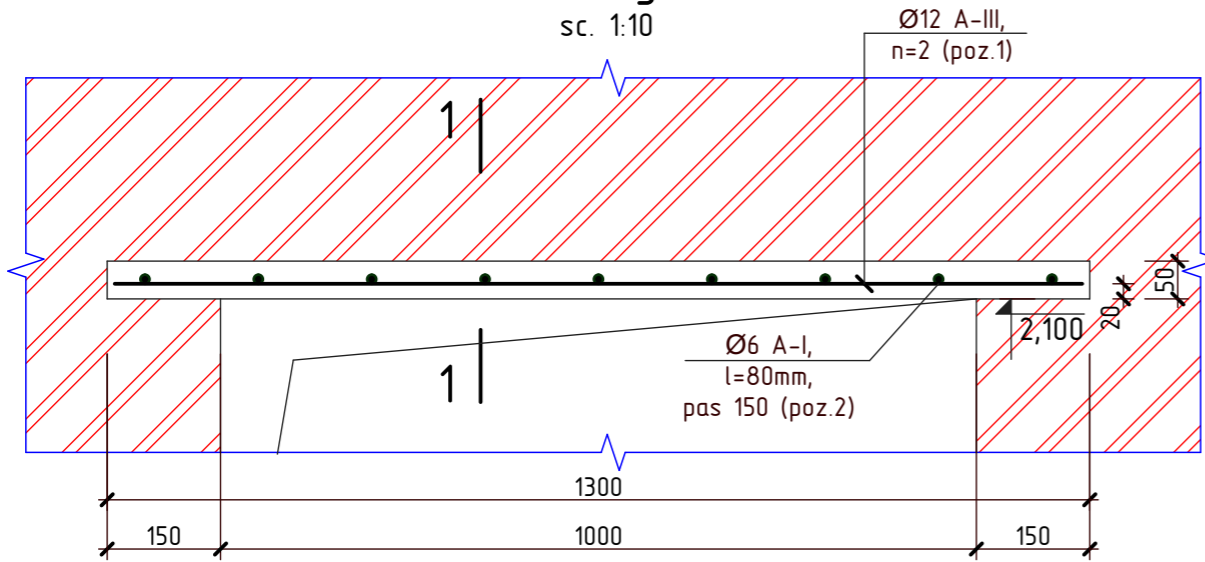
1-1

sc. 1:10



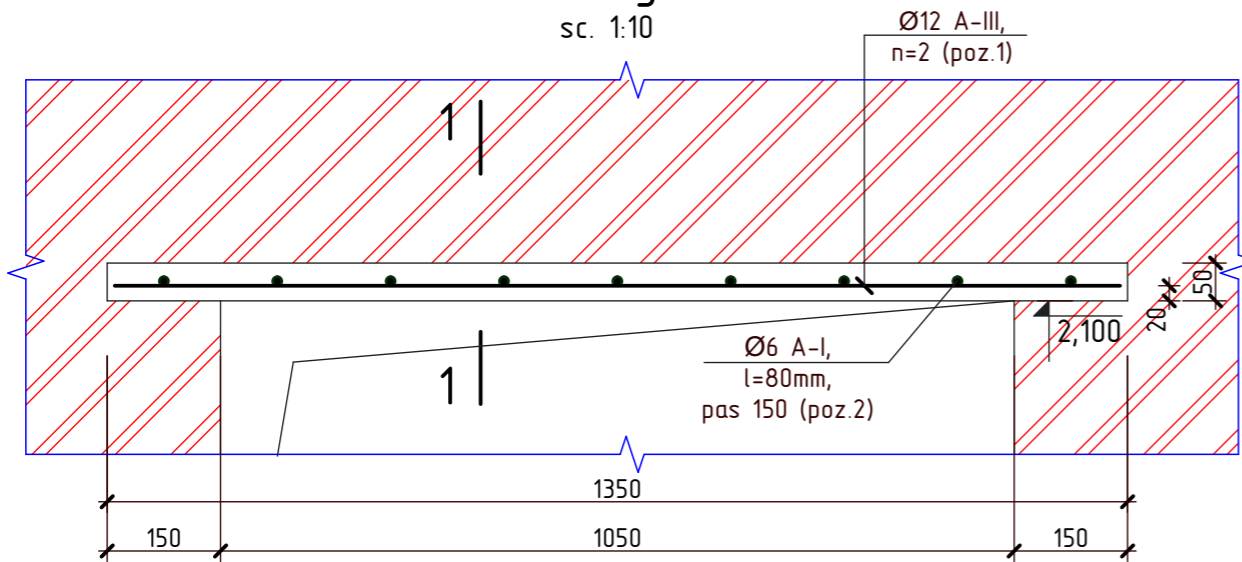
Buiandrug B-2

sc. 1:10



Buiandrug B-3

sc. 1:10



Specificatia materialelor

Poz.	Denumirea	Buc.	Masa un. kg	Nota
	Buiandrug B-1	1		
1	Ø12 A-III ГOCT 5781-82 l=880mm	2	0,78	1,56
2	Ø6 A-I ГOCT 5781-82 l=80mm	6	0,018	0,108
	Beton C-20			0,005
	Buiandrug B-2	5		
1	Ø12 A-III ГOCT 5781-82 l=1280mm	2	1,14	2,28
2	Ø6 A-I ГOCT 5781-82 l=80mm	9	0,018	0,162
	Beton C-20			0,008
	Buiandrug B-3	2		
1	Ø12 A-III ГOCT 5781-82 l=1330mm	2	1,18	2,36
2	Ø6 A-I ГOCT 5781-82 l=80mm	9	0,018	0,162
	Beton C-20			0,008

Nr.inve.a.orig. Data si semnatura Nr.inve.schim.

Mod.	Can.	Foia	Nr.d.	Semnat.	Data	OBIECTIV NR. - 12.04-D/21-SAC			
						Reconstructia cladirii in oficiul medicilor de familie din s.Ruseni, r-ul Edinet			
						Reconstructia cladirii	faza	plansa	planse
ASP		Mihaila V.			06.21		PE	9	
ISP		Hihlat E.			06.21				
Elaborat		Ciobanu V.			06.21				
						Buiandrug B-1, B-2, B-3; Sectiunea 1-1; Specificatia materialelor	SRL "Geo-Cad-Proiect" mun. Balti		