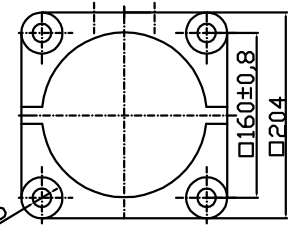
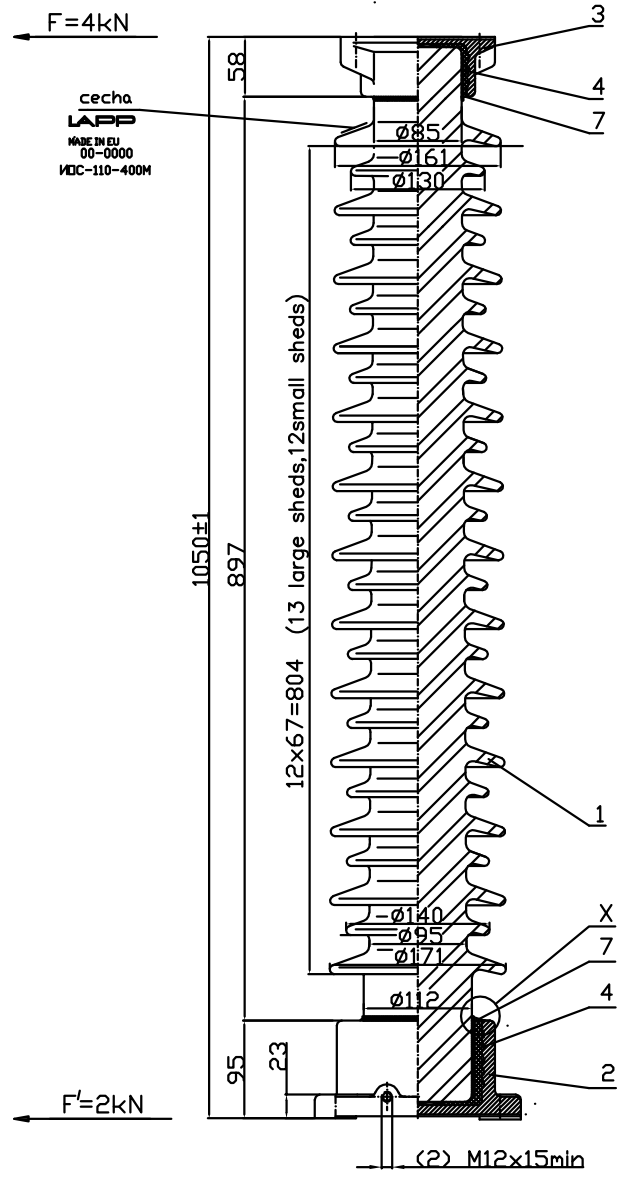
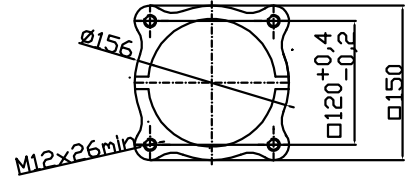
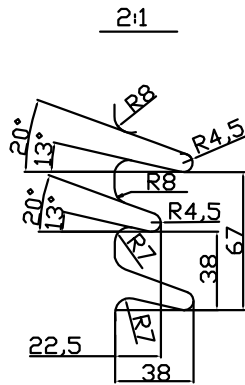


The position of the mounting holes, top fitting to bottom fitting, must be observed



I. Parametry mechaniczne:

Mechanical parameters:

- 1. Wytrzymałość na zginanie (F/F) 4,0/2,0kN  
Min. mech. failing load cantilever
- Obciążenie probiecze (50%) (F/F) 2,0/1,0kN  
Mech. routine test load cantilever (50%)
- 2. Wytrzymałość na skręcanie: 2,5kNm  
Min. mech. failing load torsion

II. Parametry elektryczne:

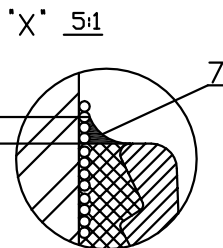
Electric parameters:

- 1. Napięcie probiecze udarowe piorunowe: >480kV  
Lightning impulse withstand voltage
- 2. Napięcie przeskoku 50Hz pod deszczem >200kV  
Power frequency withstand voltage, wet.
- 3. Nominalna droga upływu: 2125mm  
Nominal creepage distance:
- 4. Minimalna droga upływu 2060mm  
Minimum creepage distance:

III. Badania:

- 1. Badanie kontr.-odb. wg. PN-IEC 60273; EN 60168;  
Quality conformance tests: acc. to PN-IEC 60273; EN 60168;
- 2. Badanie defektoskopem stopy i głowy izolatora po badaniach mechanicznych  
Head and bottom of insulator are checked by ultra-sonic after mechanical test load

In the area of the cementing gap cover no cementing part coating must be affixed



7	2x	Zabezp. powierz. spoina	Protection of cementing		elastomer
6	x	Zabezp. wew. pow. okuć	Interior coating of the fitting		Bitumen coating B
5	x	Zabezp. powierz. grysu	Coating at the splitted end		Bitumen coating C
4	2x	Spoino cementowe	Cementing		Portland cement
3	1	Okucie M-326	Fitting M-326	cynk./galwanizing	MCI- EN 1562/EN 1563
2	1	Okucie M-327	Fitting M-327	cynk./galwanizing	MCI- EN 1562/EN 1563
1	1	Porcelana	Porcelain	glazura biała/glaze white	C130 IEC 60672
Part	Pc.	Description	Dwg. no.	Remark	Material

Val. without tol. to DIN40680, VDE0674/IEC-60168

⊙	∅8,2
//	0,52

Angular position of the mounting holes ≤ 60'  
Tolerance (mm) and camber acc. to IEC-60273 and IEC-60168

		Date	Name	Signature	Izolator wsporczy IDC-110-400M Post Insulator IDC-110-400M
		24.08.11r	A.Kopciuch		
		24.08.11r	M.Falinski		
		24.08.11r	H.Borg		
1	0715	M.Falinski	18.12.13r		
Part	Modification	Name	Date		

LAPP INSULATORS

Rysunek wykwg:  
DWG. NO.

I.N. ARG1097

I.N. NF-7449.1.BI.C