

The new PRS 500 F

Das neue PRS 500 F



PRS 500 F in analogue base configuration
PRS 500 F in analoger Basisausstattung



CE 0297



made
in
Germany

Please note:

The CE marking with identification number of the notified body (0297) refers only to medical devices intended to be used for human beings.

Hinweis:

Die CE-Kennzeichnung mit der Kennnummer der Benannten Stelle (0297) bezieht sich ausschließlich auf Medizinprodukte zur Anwendung für Menschen.

Product Features

The PRS 500 F radiography system is a complete and powerful easy-to-use bucky workplace featuring high performance for the operator and a pleasant atmosphere for patients. This complete system delivers excellent exposure quality supporting any kind of examination techniques in orthopedic, surgical and urological application.

Room saving and fast installation with floor mounted X-ray column assembly

X-ray bucky table with easy moving table top for patient load up to 230 kg (optional 250 kg).

The foot-operated mechanical brake is as well effective with disconnection of X-ray system.

An integrated Bucky adapter between Bucky and column centers the X-ray tube unit with the detector or X-ray cassette.

Automatic safety coupling for centering of X-ray tube assembly to bucky unit.

Integrated floor mounted tubestand with longitudinal travel movement and counterbalanced X-ray tube assembly enables low table-wall-distance and therefore optimal room utilization.

New modern design combines functionality and workflow

X-ray competence "Made in Germany" combines modern design with application flexibility and service friendliness with the PRS 500 F. The control unit is available with an analogue display as well as a touch control unit. The automatic activation of the collimator light provides the user with the best possible support and saves work steps. The rope change of the system can be realized for the service technician in a few steps through the easily accessible service flap.

Floating tabletop made of composite fibre material (optional carbon fibre composite material)

I.e. reduced radiation exposure for patients and less wear and tear of tube. The aluminum attenuation of the table top is typical 0,9 mm Al according to EN 60601-1-3 (optional: 0,7 mm at carbon fiber table top). Optional miscellaneous X-ray accessory like hand grips, compression band or bumper profile can be fixed at the integrated PA-accessory rails.

Minimal object-film/detector-distance brings optimum image geometry and accurate exposures along with minimal exposure time

Grid device with cassette drawer for film or digital cassettes.

Minimal exposure time, due to the carbon grid and optional digital measuring chamber

PRS 500 digital system with full DICOM-compatibility

Optional the system is available with different PROTEC RAPIXX flat panel versions. Due to its modular set-up the system can also be upgraded individually with additional software options up to a PACS (PROTEC PROPAXX medical imaging software).

PRS 500 digital system with CONAXX as central workstation for generator control and image acquisition

The advantages of a complete system with hard and software together with CONAXX provides the optimal workflow along with centralized control of the generator and detector.

Versions / Options

A generator from the PROVARIO HF or Venus series, with digital exposure control and an organ automatic, the X-ray tube and the depth aperture are included in the standard package. The selection of different system components enables individual adaptation to any requirements for analogous and digital use. A generator application under table is possible.

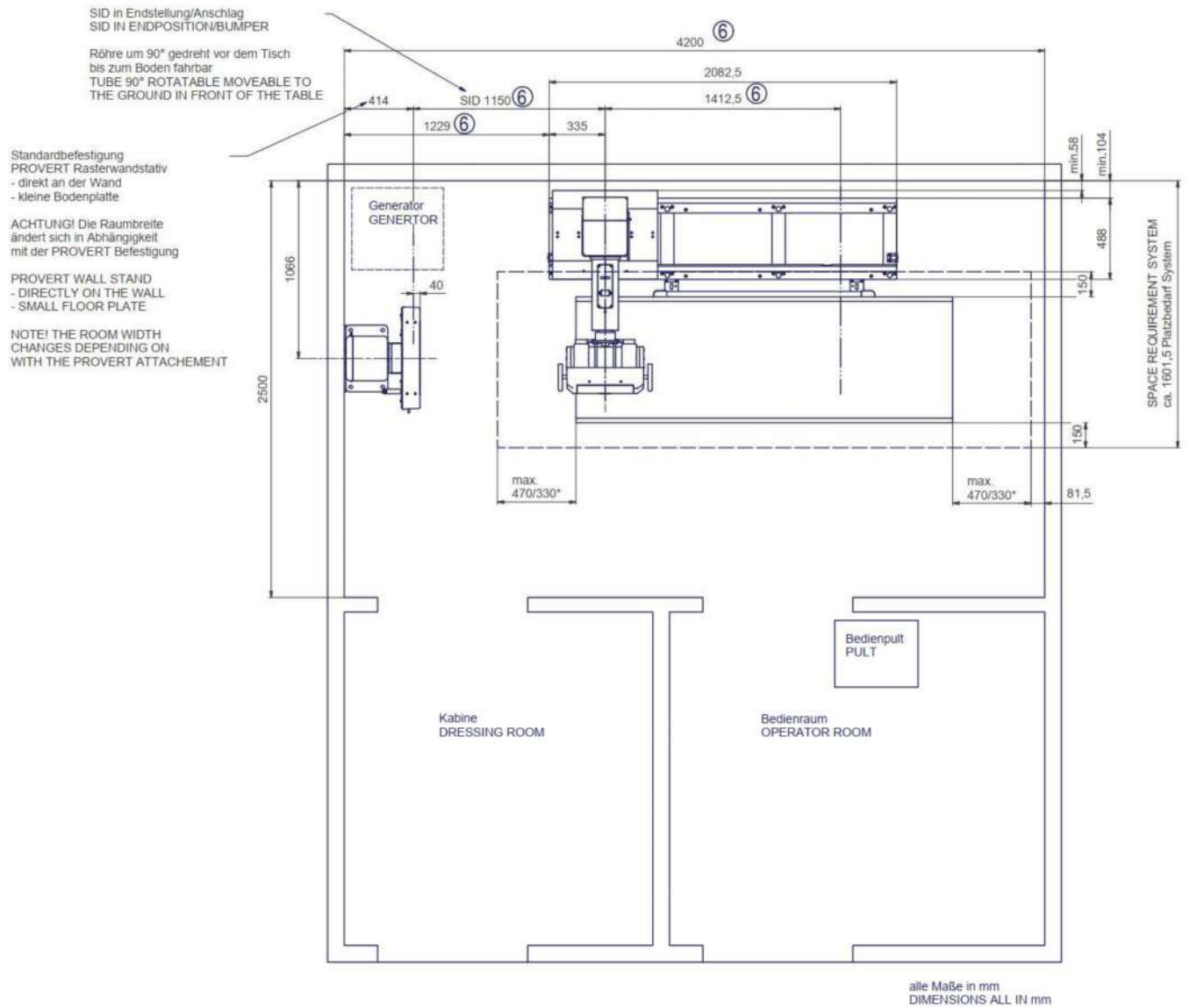
The new PRS 500 F

Technical Product Specifications

Table	Table top dimension, standard	2260 x 800 mm (optional 2000 x 755 mm)	
	Table top movement, transvers	+/- 150 mm	
	Table top movement, longitudinal	+/- 550 mm (optional +/- 330 mm at 2000 mm)	
	Table top height	697 mm	
	Table top brakes	mech. foot controlled	
	Table top thickness	25 mm	
	Table top material	Composite fiber (optional carbon fiber)	
	Al.-attenuation equivalent @100 kV	0,9 mm Al (optional 0,7 mm Al)	
	Min. distance Bucky center to table head end	330 mm	
	Min. distance Bucky center to table foot end	440 mm	
	Table top – film distance	67 mm	
	Patient load, max.	230 kg (optional 250 kg)	
	Line connection table	no	
	Operating unit	Angulation X-ray tube assembly around horizontal support arm	+/- 180°
around tube column (optional)		+/- 180°	
Detents at:		-90°, 0°, +90°; 180°;	
Brakes for the movements of the column		electromagnetic	
Control of the brakes		at control handle	
Power supply of the column		via generator (230V)	
Height tube column		2287 mm	
Tube stand longitudinal travel		1412,5 mm	
Tube stand longitudinal travel, FFD 3m with long rails		2078,5 mm	
Focal spot to table top distance		max.1185,5 mm	
Focal spot vertical travel @ horizontal X-ray beam		294 - 1882,5 mm	
Options	Operating unit with TOUCH Display	10.1" medical tablet: Intel® Cherry Trail QC Processor System Memory - 4GB QS – Microsoft® Windows 10 IOT LTSC Storage – eMMC 128 GB Camera – 2 MP (Front) / 8 MP (Rear) Resolution – FHD 1920 x 1200	
	Floor plate for wall mounting	for fixed use with wall mounting	
	Floorplate for free standing mounting	for free-standing use without wall mounting	
	Extension floor rails for 3m SID	for example for stitching examinations	
Wall stand	Column height	2190 mm	
	Vertical shift film center	385 - 1865 mm	
	Cover - film distance	40 mm	
	Cover - wall distance (floor-wall-mounting)	454 mm	
	Al.-attenuation equivalent @100 kV	0,4 mm Al	
Grid entity/Bucky	Grid entity/Bucky	Different models selectable	
	Cassette sizes	13 x 18 cm – 43 x 43 cm	
	Longitudinal travel	560 mm	
Tube		Different models selectable	

Collimator	Different models selectable all models with LED and by +/-90° rotatable
Generator	PROVARIO or Venus series – selectable
Total weight	approx. 784 kg
Upgrades	
<i>Flat panel detector</i>	RAPIXX series – selectable
<i>3-field-measuring chamber</i>	selectable
<i>Touch option</i>	selectable (only with RAPIXX flat panel detector)
<i>Dose area product meter</i>	selectable
<i>Grid</i>	Different models selectable

Space requirement / Platzbedarf



min. Raumhöhe 2300
MIN. CEILING HEIGHT 2300

Bei Systemausführung mit 2m Tischplatte
verringert sich die Raumbreite um 270mm
AT SYSTEM WITH TABLE TOP 2m LENGTH
THE ROOM WIDTH DREDREASE BY 270mm