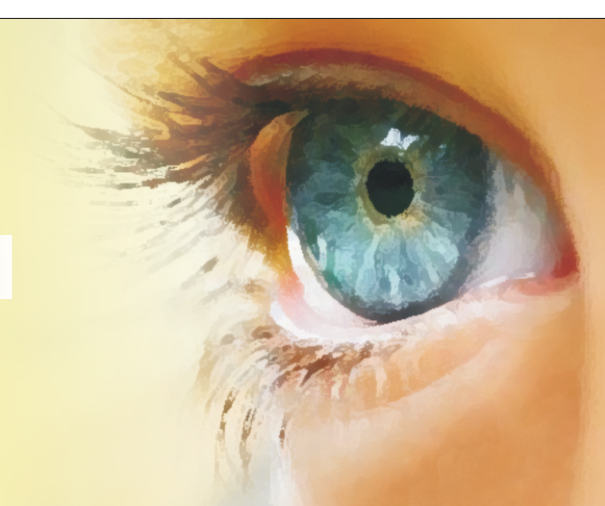
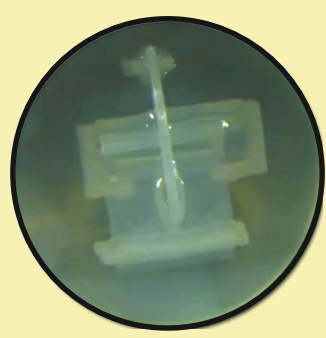


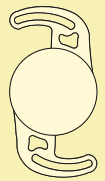
DESIGNED TO PERFORM beyond THE ORDINARY !



GenNext

Aspheric Foldable Lens



<div>GenNext Aspheric Natural Yellow Hybrid Acrylic Foldable IOLs</div> <div></div> <div>Natrual Yellow</div>	Model# YSQQ600ASP		
	Formula	Ultrasound Biometry	Optic Biometry
	SRK II	118.2	118.65
	SRK T	118.0	118.4
	Hoffer Q	pACD-4.91	pACD-5.14
	Haigis	a0-0.673	a0-0.912
		a1-0.400	a1-0.400
		a2-0.100	a2-0.100
	Hollady I	sf-1.12	sf-1.35

Nature's Own Light Filter

GenNext Aspheric Foldable IOL is made from Natural Yellow material having a special monomer containing the identical chromophore present in the human crystalline lens. Natural Yellow is the first IOL material to incorporate the same UV-A blocking and violet light filtering chromophore that is in the human crystalline lens. The approach, to UV blockers and violet filters is to use nature's own solutions to the problem of protecting the retina from harmful energetic light. This proprietary natural light filtering material is named as "Natural Yellow".

GenNext Aspheric Foldable IOL with Natural Yellow is superior to other yellow IOL available in the market because it protects the retina without blocking needed blue light. Blue blocking IOL reduces low light contrast sensitivity as well as color perception. These capabilities are critically needed for optimum vision, particularly at night. GenNext Aspheric Foldable IOL with Natural Yellow achieves complete natural protection without loss of contrast sensitivity or color perception. The human retina has already specified the exact chromophore it needs for the protection from energetic light through millions of years evolution and that is exactly the chromophore we deliver to our customers, in GenNext Natural Yellow IOL.

ZERO TECHNOLOGY ULTRA PURE MONOMER

GenNext Foldable lens is produced from a raw material that is so pure that the methacrylic acid content is difficult to even measure. Zero ionicity IOL provides a further degree of Quality Assurance by eliminating the possibility of Calcium phosphate particles appearing over the time in the ordinary polymer matrix IOL.



TECHNICAL SPECIFICATIONS :

360° Square Edge		Lens Model	YSQQ600ASP
		Optic Design	Aspheric/Double Square Edge / Biconvex
		Optic Diameter	6.0 mm
		Overall Length	11.00mm
		Haptic Angle	0°, Elastic band design
		Diopter Range	+0.0 to 30.0 (in 0.5 increment available)
		Water Content	25% BENZ
		Refractive Index	1.46

Features:

- Aberration correcting aspheric foldable lens.
- Natural Yellow- protect retina without blocking needed blue light.
- Innovative double edge lens, minimize the chance of PCO.
- Elastic band design of haptics assured postoperative stability.
- Improved contrast sensitivity, preserving depth of field.
- Lower and higher diopters are available on request.

Also available in Preloaded System