



## LEM PLUS 150 SL

Ceiling suspended tube stand with motorized vertical movement and autotracking

### Product Data

#### Electrical features

|                      |  |
|----------------------|--|
| Power supply voltage | 230 Vac $\pm$ 10% single phase           |
| Frequency            | 50/60 Hz                                 |
| Power                | 350 VA (including 150 W collimator lamp) |

#### Mechanical features

|  |  |
|--|--|
| Weight   | 271 kg (131 kg rails + transversal structure; 140 kg tube stand)   |
| Mounting   | At ceiling on two beams UPN 100 - UNI 5680 (not supplied)  |
| Suggested ceiling height                                   | 2700 $\div$ 3100 mm<br>(recommended ceiling height 2900 mm)  |
| Longitudinal rail length                                   | 4400 mm standard. Optional extension 1400 mm   |
| Transversal rail length                                    | 3000 mm  |
| Longitudinal movement                                      | Manual, run length 3260 mm   |
| Transversal movement                                       | Manual, run length 2100 mm   |
| Tube arm vertical movement                                 | Manual or motorized, spring balanced<br>Travel 1500 mm   |
| Average vertical movement speed                            | 70 mm/s  |
| Focus to floor distance                                    | Approx. 260 $\div$ 1760 mm (ceiling h=2778 mm)   |
| Working area useful coverage                               | 3960 x 2760 mm   |
| Tube rotation around vertical axis                         | Manual, +200° / -135°  |
| Tube rotation around horizontal axis                       | Manual, +120° / -210°  |
| Balanced weight  | Up to 38 kg (tube + collimator)  |
| Automatic alignment to the receptor (Autotracking feature) | The alignment between the tube and the detector is automatically maintained by the auto-tracking feature.<br>For vertical receptors (for chest stand and other upright studies), the tube will automatically follow the vertical movement of the receptor to keep the tube- receptor alignment.<br>For horizontal receptors (bucky table or suitable stretcher), the tube will follow the receptor movement to maintain the preset SID. The table and/or chest stand shall be predisposed for this feature |



## Collimator

|                       |   |
|-----------------------|---|
| Type                  | Manual with internal light source.  |
| Beam limitation       | Square and rectangular<br>With laser beam for bucky centring  |
| Light source          | White LED   |
| SID measurement       | Digital indication and retractable tape measure   |
| Field coverage        | 48 x 48 cm at 1 m   |
| Filtration            | Inherent filtration: $\geq 2$ mm Al eq. @ 75 kV<br>(IEC 60601-1-3 par. 7.3; 7.4)  |
| Additional filtration | Optional, with manual setting.<br>Default filter combination: <ul style="list-style-type: none"> <li>• 2 mm Al</li> <li>• 1 mm Al + 0.1 mm Cu</li> <li>• 1 mm Al + 0.2 mm Cu</li> </ul> |

## Functions

|                                  |   |
|----------------------------------|---|
| X-ray tube predisposition        | All models based on Villa SM compatibility list   |
| Position of controls             | Keyboard on tube support arm  |
| Movement locking                 | Permanent magnet brakes   |
| SID and tube rotation indication | By LCD digital display (1 line by 20 characters)  |
| Centring indication              | Mechanical detent and color-coded markers indicate the correct longitudinal /transversal centring on accessories (bucky table, chest stand, etc). |

## Environmental conditions

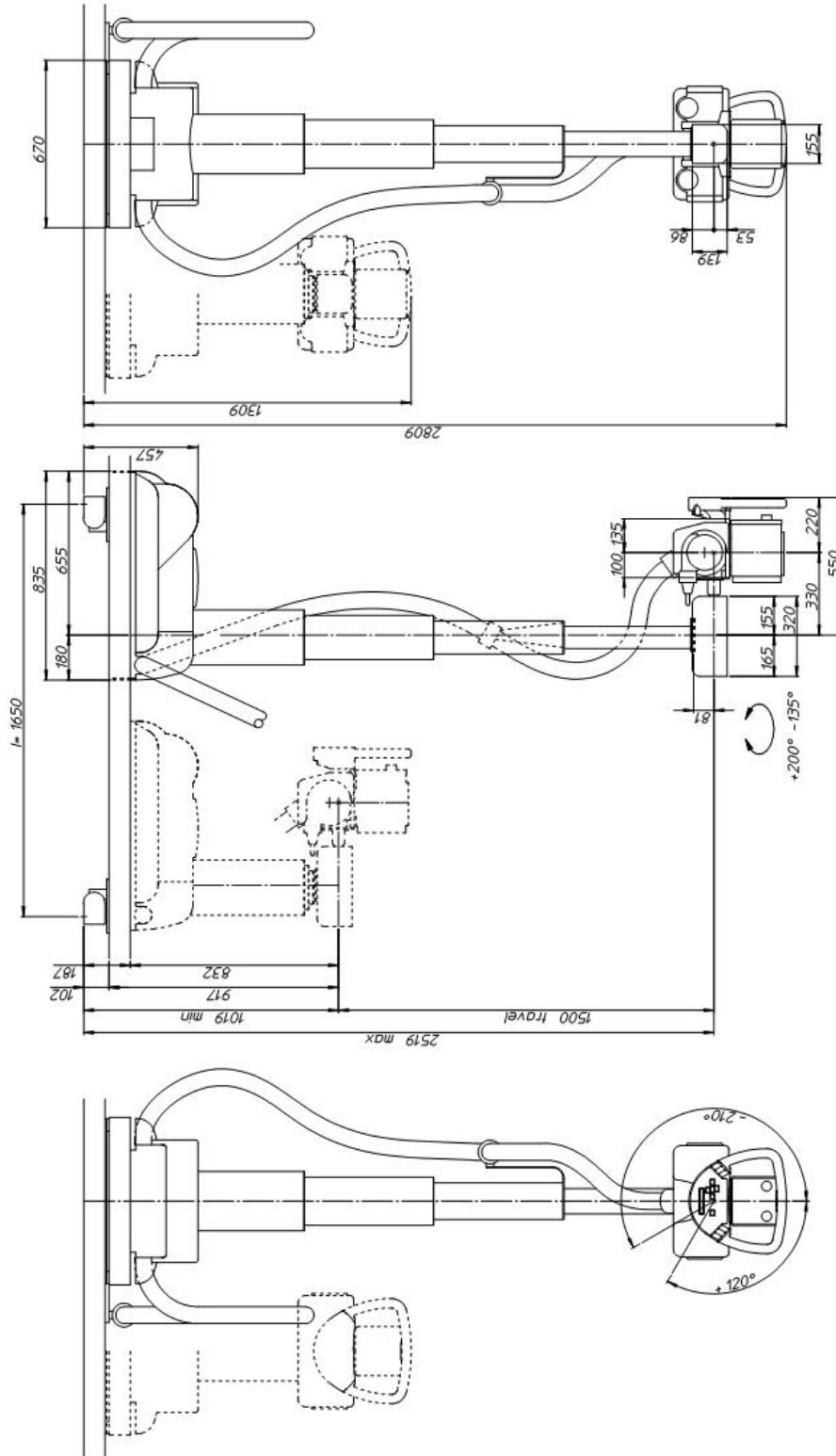
|                                      |              |  |
|--------------------------------------|--------------|--|
| Operating conditions                 | Temperature: | $+10^{\circ} \div +40^{\circ}$ Celsius |
|                                      | Humidity:    | 30% $\div$ 75%                         |
|                                      | Pressure:    | 700 $\div$ 1060 hPa                    |
| Conditions for transport and storage | Temperature: | $-10^{\circ} \div +50^{\circ}$ Celsius |
|                                      | Humidity:    | 10% $\div$ 90% non condensing          |
|                                      | Pressure:    | 500 $\div$ 1060 hPa                    |

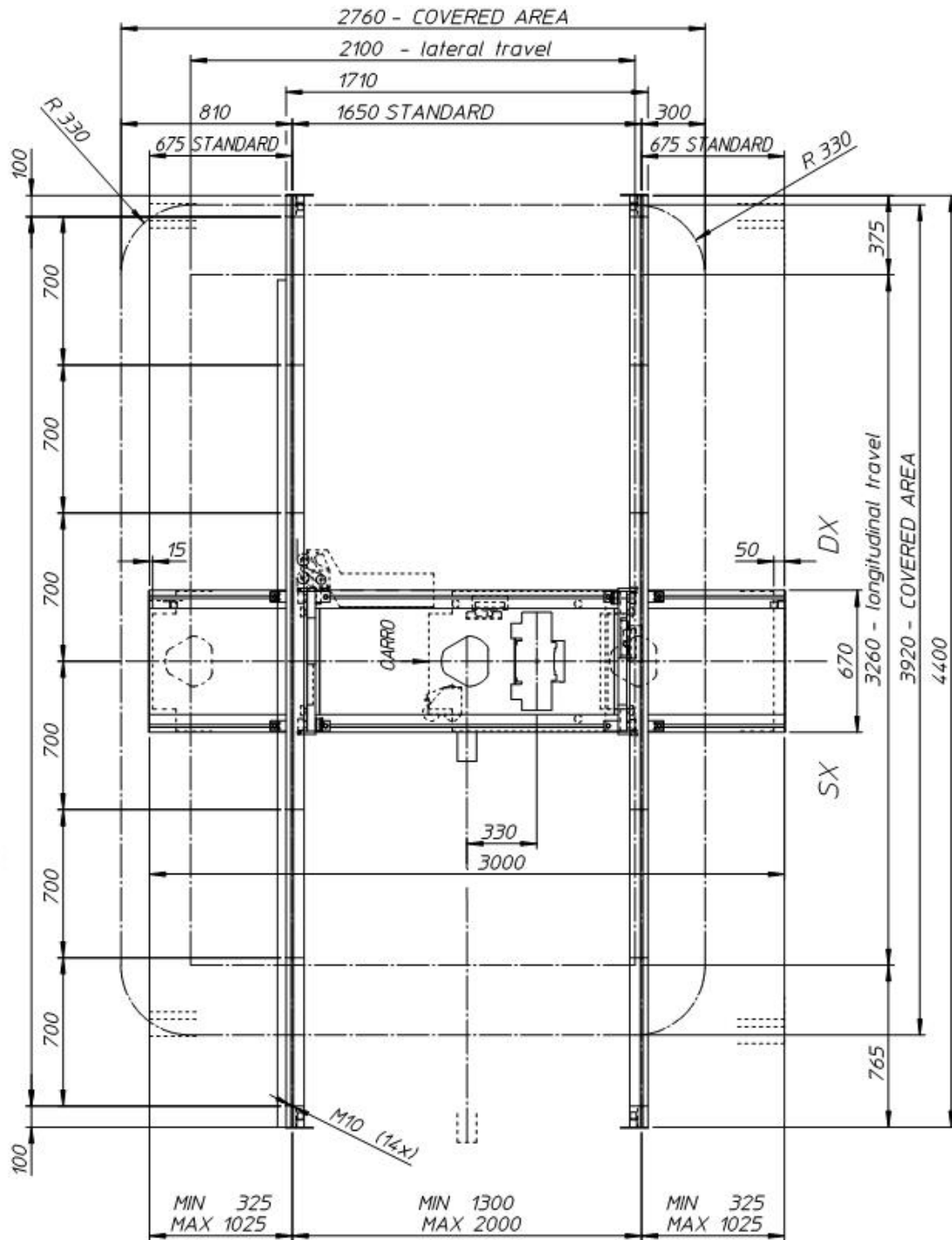
## Standards and regulations

|           |   |
|-----------|---|
| <b>CE</b> | CE symbol grants the product compliance to the Regulation (EU) 2017/745 |
|-----------|---|



Site planning (quotes in mm)





**Note:** Products are continuously under review in the light of technical advancement. The actual specification may therefore be subject to improvement or modification without notice.

VILLA SISTEMI MEDICALI s.p.a.  
 20090 BUCCINASCO (MI) - ITALY,  
 Via delle Azalee, 3  
 Tel. +39-02-488591, Fax +39-02-4881844

Company with Quality System certified by



ISO 9001:2015

ISO 13485:2016