



GENERAL INSTRUMENTS



Drill Bits for Quick Coupling

Code No.	Diameter	Length	Code No.	Diameter	Length
601.001	1.1mm	60mm	601.022	4.0mm	250mm
601.002	1.5mm	85mm	601.023	2.5mm	165mm
601.003	1.5mm	110mm	601.024	2.7mm	165mm
601.004	1.8mm	100mm	601.025	2.7mm	130mm
601.005	1.8mm	125mm	601.026	2.7mm	180mm
601.006	2.0mm	100mm	601.027	2.0mm	170mm
601.007	2.0mm	125mm	601.028	4.5mm	225mm
601.008	2.5mm	110mm	601.029	2.3mm	180mm
601.009	2.5mm	180mm	601.030	2.8mm	180mm
601.010	2.7mm	110mm	601.031	2.0mm	145mm
601.011	3.2mm	145mm	601.032	1.8mm	110mm
601.012	3.2mm	195mm	601.033	2.0mm	110mm
601.013	3.5mm	195mm	601.034	2.4mm	110mm
601.014	4.5mm	145mm	601.035	3.5mm	110mm
601.015	4.5mm	195mm	601.036	2.5mm	130mm
601.016	3.5mm	130mm	601.037	2.8mm	160mm
601.018	2.7mm	150mm	601.038	3.2mm	200mm
601.019	2.8mm	165mm	601.039	4.8mm	200mm
601.020	4.3mm	225mm	601.040	1.5mm	100mm
601.021	2.3mm	130mm	601.041	2.0mm	130mm



Drill Bits for Jacobs Chuck

Code No.	Diameter	Length	Code No.	Diameter	Length
602.001	1.1mm	45mm	602.020	2.5mm	130mm
602.002	1.5mm	70mm	602.021	2.7mm	130mm
602.003	1.8mm	125mm	602.022	4.3mm	225mm
602.004	2.0mm	85mm	602.023	2.8mm	130mm
602.005	2.5mm	95mm	602.024	2.7mm	230mm
602.006	2.5mm	180mm	602.025	2.3mm	150mm
602.007	2.7mm	95mm	602.026	4.5mm	300mm
602.008	2.7mm	180mm	602.027	2.0mm	125mm
602.009	3.2mm	130mm	602.028	2.0mm	180mm
602.010	3.2mm	180mm	602.029	2.0mm	150mm
602.011	3.2mm	250mm	602.030	4.0mm	300mm
602.012	3.5mm	130mm	602.031	4.3mm	300mm
602.013	3.5mm	180mm	602.032	2.8mm	170mm
602.014	3.5mm	250mm	602.033	1.0mm	65mm
602.015	4.0mm	250mm	602.034	2.0mm	65mm
602.016	4.5mm	130mm	602.035	4.5mm	225mm
602.017	4.5mm	180mm	602.036	2.5mm	250mm
602.018	4.5mm	250mm	602.037	1.8mm	150mm
602.019	3.0mm	200mm	602.038	2.8mm	225mm



• 679.001 | Plaster Saw Small Angle



• 679.002 | Plaster Saw Large



• 679.003 | Electric Plaster Cutting Saw with Two Blade



• 679.004 | Blade Small for Electric Plaster Cutting Saw



• 679.005 | Blade Large for Electric Plaster Cutting Saw



• 679.006 | Plaster Cutting Scissor



• 679.007 | Plaster Bender Scissor



• 679.008 | Plaster Spreader



• 679.009 | Plaster Share Lorenz's

Bone Holding Forceps



• 681 | Burns Bone Holding Forceps
Length 150mm, 190mm



• 682 | Lanes Bone Holding Forceps Length 250mm, 300mm



• 683 | Heygroves Bone Holding Forceps
Small (205mm), Medium (255mm), Large (300mm)



• 684 | Lowman's Bone Holding Clamp Length 110mm, 155mm, 180mm, 205mm



• 685.001 | Plate & Bone Holding Forceps for 3.5mm Screw Small
• 685.002 | Plate & Bone Holding Forceps for 4.5mm Screw Medium
• 685.003 | Plate & Bone Holding Forceps for 4.5mm Screw Large



• 686 | Patella Bone Holding Forceps
Length 205, 250mm Double Prong

Bone Holding Forceps



• 687 | Self-Centering Bone Holding Forceps Length 100mm, 144mm, 191mm, 239mm, 277mm, 310mm



• 688 | Reduction Forceps Serrated Jaws Length 100mm, 146mm, 191mm, 205mm, 255mm, 300mm



• 689 | Reduction Forceps with Point Length 126mm, 140mm, 161mm, 205mm, 255mm

Bone Cutters



• 691.001 | Bone Cutter Straight Small (D.A)



• 691.002 | Bone Cutter Curved Small (D.A)



• 691.003 | Bone Cutter Straight Small (S.A)



• 691.004 | Bone Cutter Curved Small (S.A)

Bone Cutters



• 691.005 | Bone Cutter Straight Large



• 691.006 | Bone Cutter Curved Large



• 691.007 | Tuder Edward Bone Cutter Angled 45°



• 691.008 | Tuder Edward Bone Cutter Angled 90°

Bone Nibblers/Punch



• 691.011 | Bone Nibbler Straight Small (D.A)



• 691.012 | Bone Nibbler Curved Small (D.A)



• 691.013 | Bone Nibbler Large Straight



• 691.014 | Bone Nibbler Large Curved

Bone Nibblers / Punch



◦ 691.015 | Bone Nibbler Angular (D.A)



◦ 691.016 | Spinal Rounger



◦ 691.017 | Bone Nibbler Straight Medium (D.A.)



◦ 691.018 | Bone Nibbler Curved Medium (D.A.)



◦ 692 | Kerri son Punch Upward Cutting 45°
2mm, 3mm, 4mm



◦ 693 | Kerri son Punch Downward Cutting 45°
2mm, 3mm, 4mm



◦ 694 | Kerri son Punch Upward Cutting 90°
2mm, 3mm, 4mm



◦ 695 | Kerri son Punch Downward Cutting 90°
2mm, 3mm, 4mm

Bone Nibblers / Punch



• 696 | Disc Punch Plain Straight Cutting 2mm, 3mm, 4mm



• 696 | Disc Punch Plain Upward Cutting 2mm, 3mm, 4mm



• 696 | Disc Punch Plain Downward Cutting 2mm, 3mm, 4mm



• 697 | Disc Punch Serration Straight Cutting 2mm, 3mm, 4mm



• 697 | Disc Punch Serration Upward Cutting 2mm, 3mm, 4mm



• 697 | Disc Punch Serration Downward Cutting 2mm, 3mm, 4mm

Bone Retractor/Bone Elevators/Bone Levers



• 706.006 | Retractor 6mm Wide



• 706.008 | Retractor 8mm Wide

Bone Retractor / Bone Elevators / Bone Levers



◦ 706.015 | Retractor 15mm Wide



◦ 707.018 | Retractor 18mm Wide



◦ 707.024 | Retractor 24mm Wide



◦ 707.043 | Retractor 43mm Wide



◦ 708.001 | Durra Retractor Straight



◦ 708.002 | Durra Retractor Curved



◦ 708.003 | Nerve Root Retractor Straight



◦ 708.004 | Nerve Root Retractor Curved

Bone Retractor / Bone Elevators / Bone Levers



• 708 | Mastoid Retractor 150mm, 200mm, 250mm



• 709 | Self Retraining Retractor 200mm, 250mm, 300mm



• 711 | Periosteal Elevator Curved Blade 6mm, 10mm, 14mm wide



• 711 | Periosteal Elevator Straight Blade 6mm, 10mm, 14mm wide



• 711.009 | Bristow Periosteal Elevator



• 711.010 | Cobs Elevatore



• 712.001 | Bone Lever Small for Radius / Ulna



• 712.002 | Lane's Bone Lever Large Plain



• 712.003 | Lane's Bone Lever Large Serrated

Osteotomes



• 713 | Osteotomes Straight 5mm, 10mm, 15mm, 20mm, 25mm



• 714 | Osteotomes Curved 5mm, 10mm, 15mm, 20mm, 25mm



• 715 | Osteotome Small Straight 2mm, 4mm, 6mm, 8mm

Chisels



• 716 | Chisel Straight 5mm, 10mm, 15mm, 20mm, 25mm

Gouges



• 717 | Gouges Straight 5mm, 10mm, 15mm, 20mm, 25mm

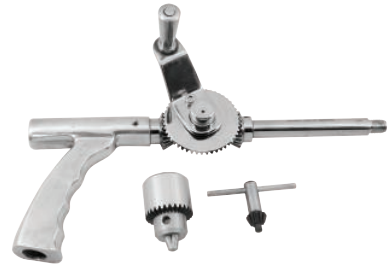


• 718 | Gouges Curved 5mm, 10mm, 15mm, 20mm, 25mm

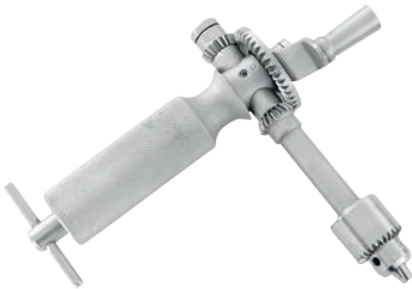
Hand Drills



• 721.001 | Hand Drill with Chuck & Key



• 721.002 | Open Gear Hand Drill with Chuck & Key



• 721.003 | Micro Hand Drill with Chuck & Key



• 721.004 | Chuck & Key



• 721.005 | Key for Chuck

Broken Screw & Broken Nail Removal Instruments



• 722.001 | Hollow Reamer Set of Three



• 723.006 | Broken Nail Removal 6mm

Broken Screw & Nail Removal Instruments

Broken Screw & Broken Nail Removal Instruments



• 723.008 | Broken Nail Removal 8mm



• 723.010 | Broken Nail Removal 10mm



• 723.011 | Broken Nail Removal T Handle Extractor Rod And Round Hammer



• 723.012 | Universal Nail Removal With Extractor Rod & Round Hammer (Set Of Six)



• 723.001 | Broken Nail Removal Long Hook with Extractor Rod & Round Hammer

Reamers



• 724.001 | Flexible Reaming Shaft



• 724 | Bit for Flexible Reaming Shaft 8.0mm, 8.5mm, 9.0mm, 9.5mm, 10.0mm, 10.5mm, 11.0mm, 11.5mm, 12.0mm, 12.5mm, 13.0mm

Reamers



- 725 | Flexible Reamer with Shaft 8.0mm, 9.0mm, 10.0mm, 11.0mm, 12.0mm, 13.0mm



- 726 | Reamer for Nail 2.0mm, 2.5mm, 3.0mm, 3.5mm, 4.0mm



- 727 | Canulated Reamer for Nail 6.0mm, 7.0mm, 8.0mm, 9.0mm, 10.0mm, 11.0mm, 12.0mm, 13.0mm

Others Instruments



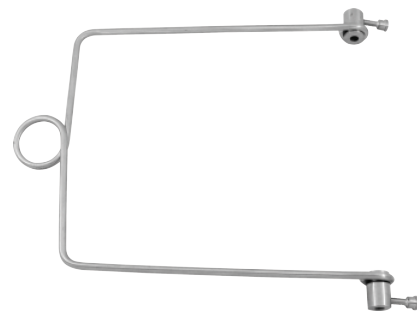
- 731 | Hammer 250gm, 350gm, 500gm, 750gm With Fiber Handle



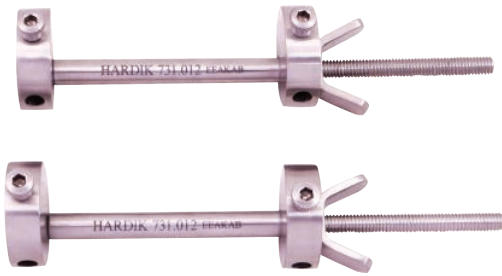
- 731.002 | Bone File with Fiber Handle



- 731 | Crutch Field Tong Small, Large



- 731.005 | Bohler Stirrup Small 150mm x 180mm
- 731.006 | Bohler Stirrup Medium 180mm x 240mm
- 731.007 | Bohler Stirrup Large 180mm x 280mm
- 731.008 | Bohler Stirrup Extra Large 180mm x 380mm



◦ 731.012 | Chanalys Clamp Pair



◦ 731.018 | Femoral Distractor Two in One



- 731.019 | Bone Hook Sharp Small With Fiber Handle
- 731.020 | Bone Hook Sharp Medium With Fiber Handle
- 731.021 | Bone Hook Sharp Large With Fiber Handle



◦ 732.001 | Screw Driver All In One

Spanners Instruments



◦ 895 | Spanner 6mm, 8mm, 10mm, 11mm, 12mm, 13mm, 14mm, 16mm, 19mm, 20mm



◦ 896 | T Handle Socket Wrench Cannulated 3.5mm, 6mm, 8mm, 10mm, 11mm, 12mm, 13mm



BATTERY OPERATED TOOLS SYSTEM

B1.01

Multifunction Motor



B1.02

Acetabulum Reaming Drill



B1.03

Reciprocating Saw



B1.04

Sternum Saw



B1.05

Bone Drill



B1.06

Cranial Drill



B1.07

Cannulated Drill



B1.08

Cranial Bur



B1.09

Oscillating Saw



B1.10

K-wire Drill





B2

Bone Drill For Trauma Operation

Output Power - 150 W

Diameter Of Drill Bit - Φ 0.8~8 mm

Speed - 0 to 1200 rpm



B3

Oscillating Saw For Joint Operation

Output Power - 150 W

Oscillating Frequency-

18000 Times/Min, Swing 5



B4

Cannulated Drill For Trauma Operation

Output Power - 150 W
Diameter Of Drill Bit - $\Phi 0.8\sim 8$ mm
Speed - 0 to 800 rpm



B5

Acetabulum Reaming Drill For Joint Operation

Output Power - 150 W
Diameter Of Drill Bit - $\Phi 0.8\sim 8$ mm
Speed - 0 to 300 rpm

B8
Additional
Charger



B9
Additional
Battery



B10
Aseptic Transfer Kit



B11
Drill Chuck Key



Battery Operated Tools System Full Case





House of Ortho Tools

Hardik International Pvt. Ltd.

Plot No. G-2041/42/A, Kishan Gate, Lodhika G.I.D.C.,
Kalawad Road, Metoda, RAJKOT-360 021, (INDIA).

info@hardikinternational.com

www.hardikinternational.com

☎ : +91 97370 47470/1/2/4 | 📞 : hardikinternational

Follow Us : [f](#) [t](#) [i](#) [i](#) [v](#)