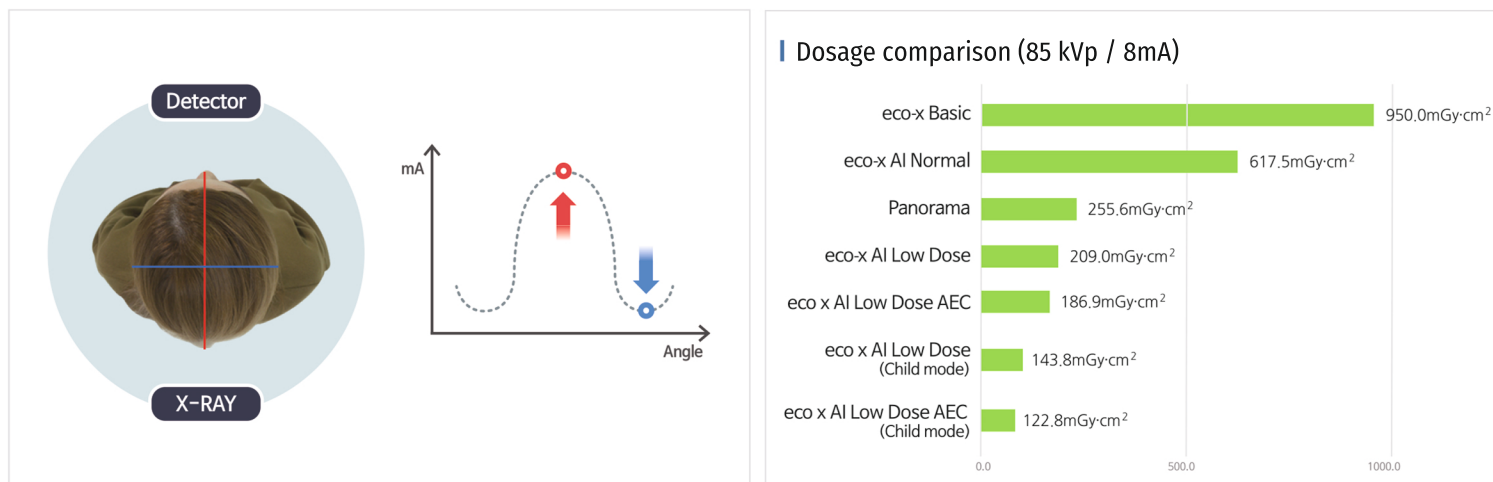


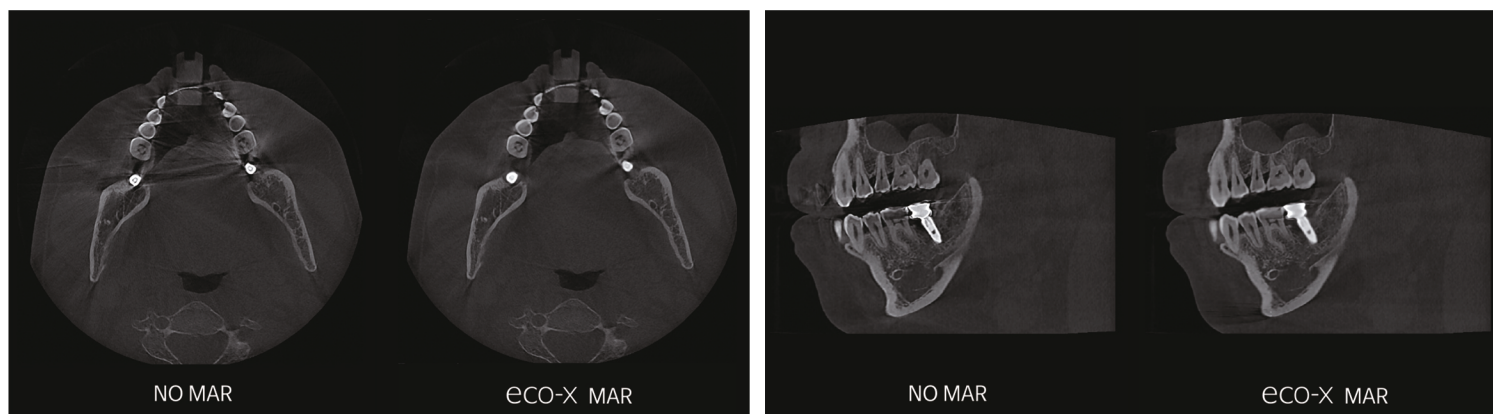
Innovation with AI Technology

- +++ No.01 Detects differences between anatomical structure and noise to provide the high definition images with lower radiation dose than Panorama
- +++ No.02 Detects the metal artifact like prosthetics to minimize distortion in anatomical structures
- +++ No.03 Automatically detects landmarks for 2D ceph tracing which is essential for orthodontic treatment

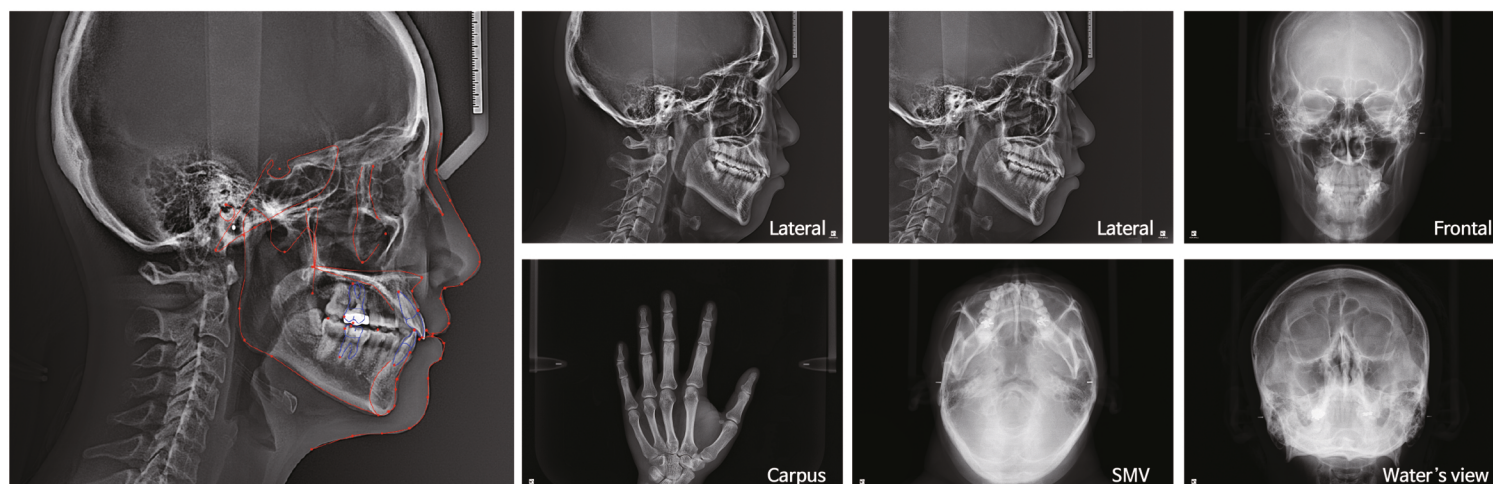
// **AEC (Auto Exposure Control):** Achieves superior imaging with dosage less than a panoramic scan



// **AI MAR:** Detects difference between implant and anatomical structure, minimizing metal artifact

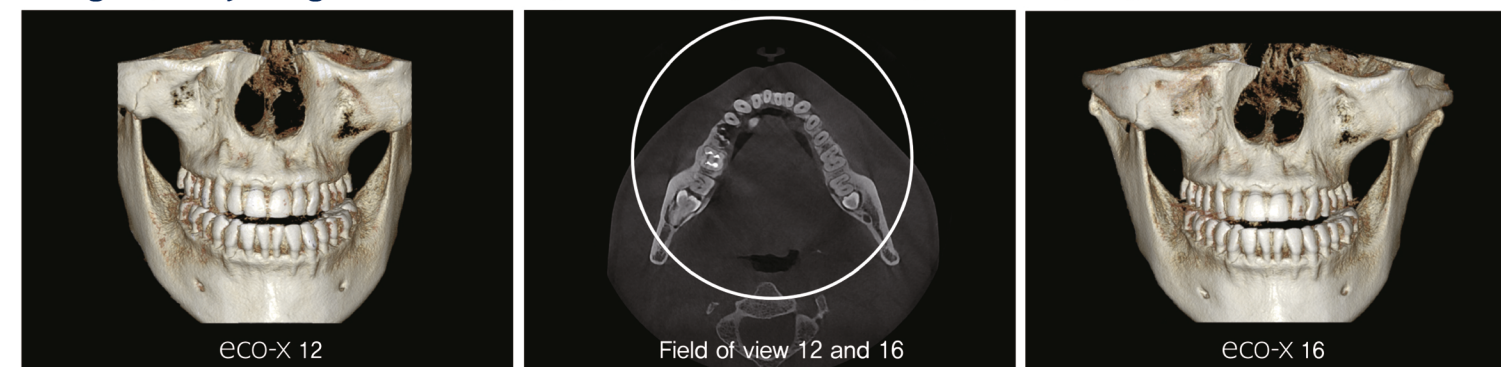


// **Auto Landmark Detection:** AI automatically detects landmarks with 2D Cephalometric Scan

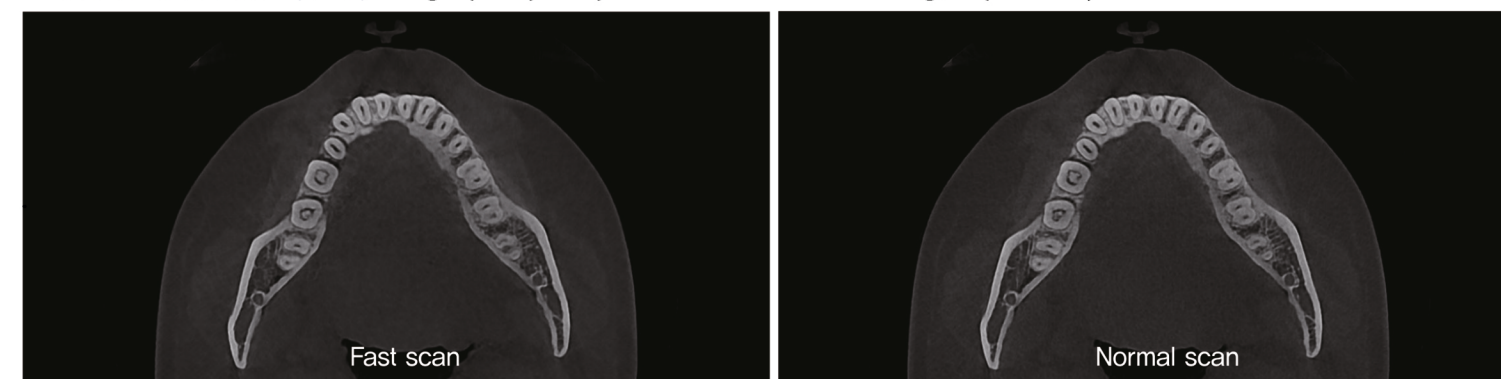


Essential Functions for Various Diagnostics

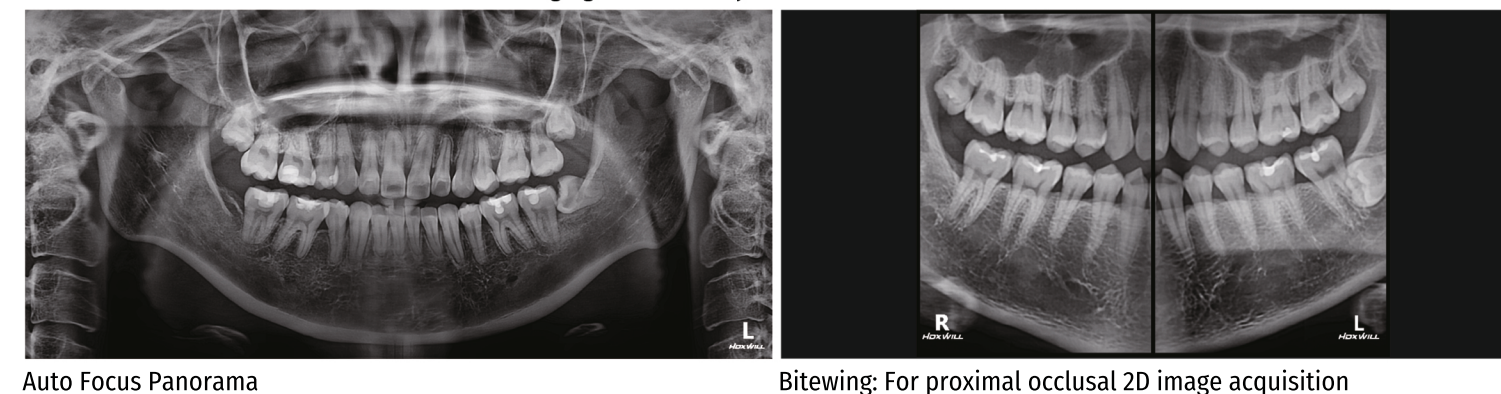
// **High Quality Image:** FULL ARCH CT image of 360° for impacted tooth diagnosis and implant guide



// **Ultra Fast Scan (UFS):** Image quality comparable to standard scanning, acquired in just 8 seconds at a reduced dose.



// **PANORAMA:** Dedicated 2D Panoramic Imaging for versatility



// **Model Scan:** STL file is extracted simultaneously with CBCT scan of impression or mode

