

Customer:	AGRODOR	Ref.:	
Item	2	Quantity	1
Type	CENTRIFUGAL PUMP WITH HORIZONTAL SHAFT		Model
Required flow rate	800 m³/h	Required head	60 m
SCC-2-200-500Y			

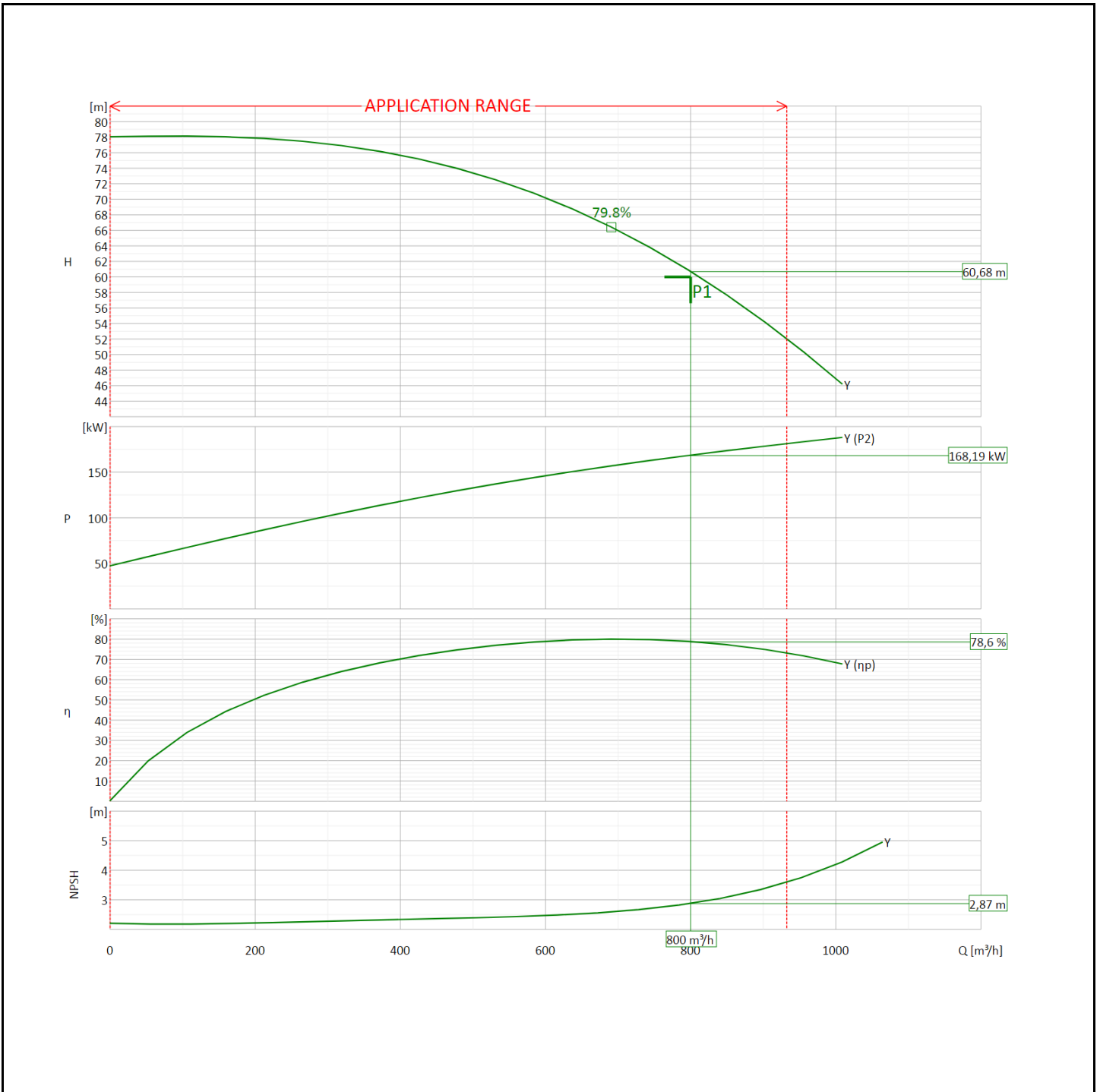
OPERATING LIMITS			CONSTRUCTION CHARACTERISTICS		
Pumped liquid	Water		UNI delivery flange DN	200	PN
Max. temperature of pumped liquid	90 °C °C		UNI suction flange DN	250	PN
Maximum density	1	kg/dm³	Number of stages	1	
Maximum viscosity	1	mm²/s	Type of Impeller	Double-suction impeller	
Max. solid content	-		Type of installation	Horizontal on baseplate	
Maximum number of starts/hr	3		Moment of inertia	-	
Maximum operating time with closed port	-		Seal lubrication	pumped liquid	
	-		Type of bearings	Ball	
	-		Bearing lubrication	Grease	
	-		Pump seal	Packing	
WEIGHTS			Type of support		
Pump weight	690	Kg	Baseplate	BGAC2-200-500-250	
Motor weight	1660	Kg			
Weight of assembly on baseplate	2687.6	Kg			

OPERATING CHARACTERISTICS			ELECTRIC MOTOR CHARACTERISTICS		
Service flow rate	803.3	m³/h	Brand		
Service head	60.5	m	Model	H325004T2B33552	
Qmin	0	m³/h	Nominal power	250	kW
Qmax	932.3	m³/h	Rated frequency	50	Hz
H (Q=0)	0	m	Rated voltage	400	V
Hmax (Qmin)	78	m	Efficiency class	IE3	
Power consumption at duty point	168.5	kW	Use with inverter		
Max power consumption	180.8	kW	Rated current	422.3	A
Pump efficiency	78.49	%	No. Poles	4	Nominal speed
Overall efficiency	75.4	%	Nominal speed	1490	1/min
NPSH required	2.9	m	Type of motor	3 ~	
Rotation speed	1490	1/min	Efficiency 4/4 - 3/4	96.0 - 96.1 %	
Sense of rotation (*)	Clockwise		Power factor 4/4 - 3/4	0.89	
Tolerance according to standard	ISO 9906:2012 3B		Insulation class	F	
MEI			Is/In - Ts/Tn	7.1 - 2	
Impeller diameter	464.5	mm	Type of starting		
Number of pumps installed	Operating	Stand-by	Protection class	IP55	
	1	0	Thermal protection	PTC	
			Service Factor	1	

PUMP MATERIALS		
Pump casing	Cast iron	
Cover pump	Cast iron	
Impeller	Cast iron	
Impeller wear ring	Bronze	
Shaft sleeve	Stainless steel	
Packing gland	-	
Mechanical seal	-	
Shaft	Stainless steel	
Support bearing	Cast iron	
Bearing	-	

Notes:	(*) Front view from delivery side	
OFFER No. 24-I11BD-2906	Pos. 2.1	Date 13/11/2024

Voltage	400	V	Frequency	50	Hz	Flow rate	800 m ³ /h	Head requ.	60 m
Motor	250	kW	No. poles	4		Model	SCC-2-200-500Y		



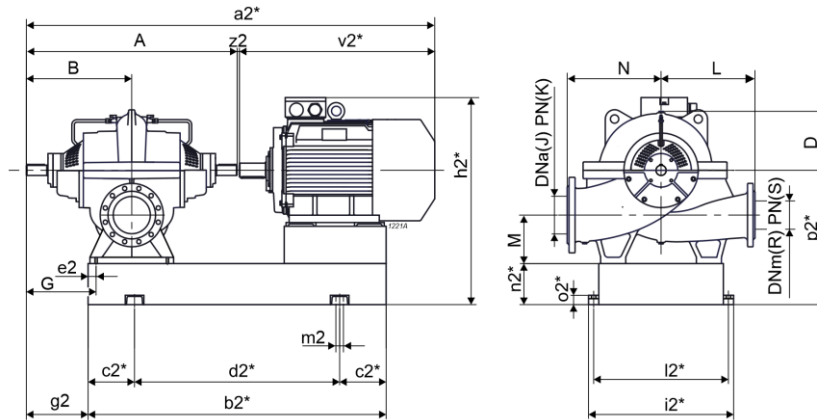
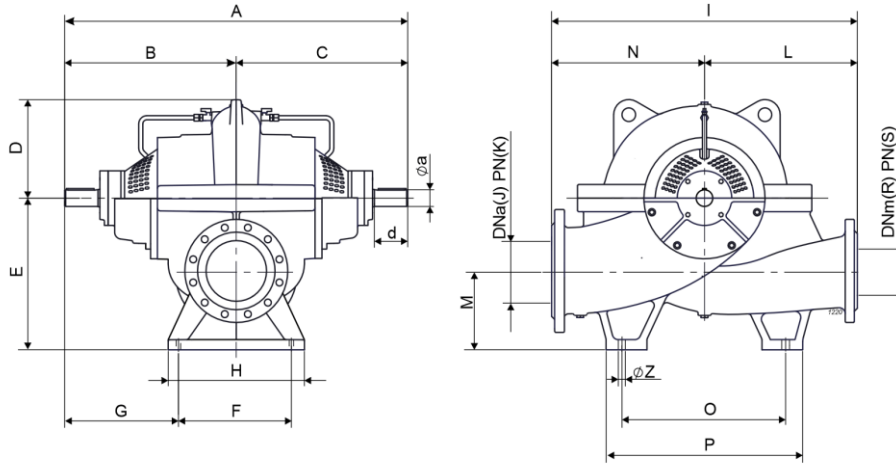
OPERATING DATA - ISO 9906:2012 3B -

Q [m ³ /h]	H [m]	P [kW]	η [%]	NPSH [m]	Speed [1/min]
800	59.42	165.13	78.36	2.86	1490

OFFER No. 24-I11BD-2906	Pos. 2.1	Date 13/11/2024
--------------------------------	-----------------	------------------------

CAPRARI S.p.A. reserves the right to make changes to improve its products at any time and without any notice. Indicative performances and dimensions. - Copyright © 2016-2024 Caprari S.p.A. - All Rights Reserved.

Voltage	400	V	Frequency	50	Hz	Flow	800 m ³ /h	Head	60 m
Power	250	kW	No. poles	4		Model	SCC-2-200-500Y		



$g2 = G - e2$

*Valori indicativi in funzione della marca di motore utilizzato
Indicative values according to the type of motor installed

Dimensions [mm]

a	65	L	500
A	1284	I2	810
a2	2844	M	260
B	642	m2	22
b2	2030	N	550
C	642	n2	220
c2	350	O	620
d	130	o2	50
D	377	P	724
d2	1330	p2	780
E	560	R	200
e2	45	S	16
F	360	v2	1556
G	462	Z	22
H	420	z2	4
h2	1381		
I	1050		
i2	860		
J	250		
K	16		

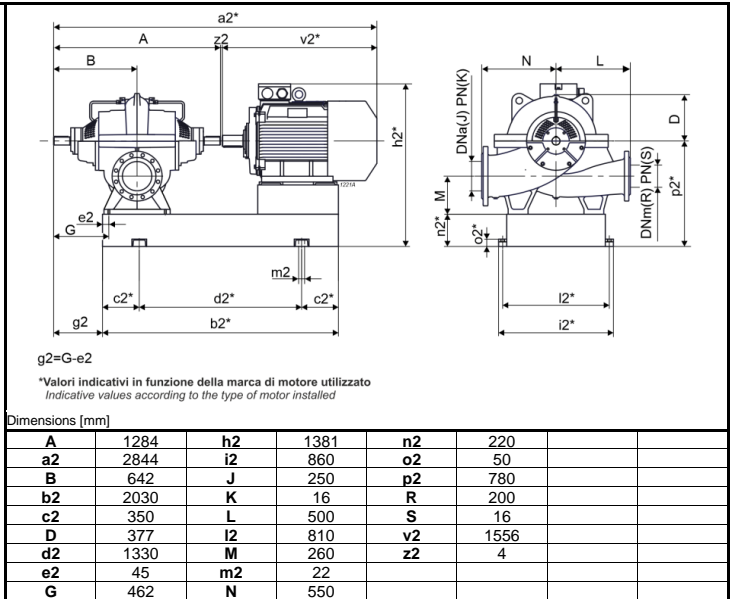
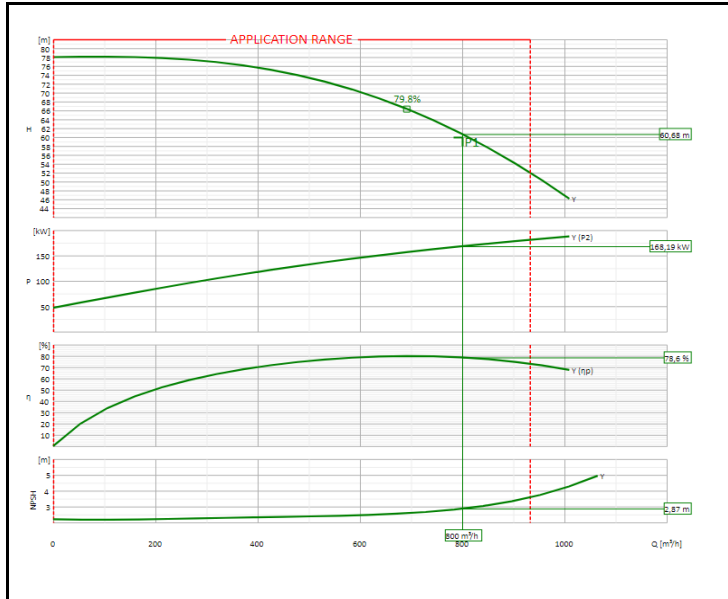
OFFER No. **24-I1IBD-2906**

Pos.
2.1

Date
13/11/2024

CAPRARI S.p.A. reserves the right to make changes to improve its products at any time and without any notice. Indicative performances and dimensions. - Copyright © 2016-2024 Caprari S.p.A. - All Rights Reserved.

Customer:	AGRODOR			Ref.:			
Item	2	Quantity	1	Required flow rate	800 m ³ /h	Required head	60 m
Type	CENTRIFUGAL PUMP WITH HORIZONTAL SHAFT			Model	SCC-2-200-500Y		



OPERATING DATA - ISO 9906:2012 3B -					CONSTRUCTION CHARACTERISTICS			
Q [m ³ /h]	H [m]	P [kW]	η [%]	NPSH [m]	UNI delivery flange DN	200	PN	16
800	59.42	165.13	78.36	2.86	UNI suction flange DN	250	PN	16
					Total weight	2687.6		Kg
					No. Stages	1		
					Pump seal	Packing		
					Type of installation	Horizontal on baseplate		
****	****	****	****	****	Baseplate	BGAC2-200-500-250		

OPERATING LIMITS			OPERATING CHARACTERISTICS		
Pumped liquid	Water		Service flow rate	803.3	m ³ /h
Max. temperature of pumped liquid	90 °C °C		Service head	60.5	m
Maximum density	1	kg/dm ³	Qmin	0	932.3
Maximum viscosity	1	mm ² /s	H (Q=0)	0	78
Max. solid content	-		P2 Duty Point	168.5	180.8
Max. no. starts/hr	3		P2max		
			Pump efficiency	78.49	75.4
			Overall efficiency		
Maximum operating time with closed port	-		Rotation speed	1490	1/min
			Sense of rotation (*)	Clockwise	
			Number of pumps installed	Operating	Stand-by
				1	0

PUMP MATERIALS		ELECTRIC MOTOR CHARACTERISTICS		
Pump casing	Cast iron	Brand		
Cover pump	Cast iron	Model	H325004T2B33552	
Impeller	Cast iron	Nominal power	250	kW
Impeller wear ring	Bronze	Rated frequency	50	Hz
Shaft sleeve	Stainless steel	Rated voltage	400	V
Packing gland	-	Efficiency class	IE3	
Mechanical seal	-	Use with inverter		
Shaft	Stainless steel	Rated current	422.3	A
Support bearing	Cast iron	No. Poles	4	1490
Bearing	-	Nominal speed		1/min
		Type of motor	3 ~	
		Efficiency 4/4 - 3/4	96.0 - 96.1 %	
		Power factor 4/4 - 3/4	0.89	
		Insulation class	F	
		Is/In	7.1	2
		Ts/Tn		
		Type of starting		
		Protection class	IP55	
		Thermal protection	PTC	1
		Service Factor		

Notes:	(*) View from motor coupling side		
OFFER No. 24-I1IBD-2906	Pos. 2.1	Date 13/11/2024	