



Shanghai Leading Water Treatment Equipment Co.,Ltd

Specification

Model No.	Capacity	Delivery time	Warranty	Payment term	Remark
PRO-S-DI-60	60L/H	7-10 working days after payment	1 year	T/T 100% in advance	Configure the internal circulation system, water tank + transfer pump unit

Product feature

- ▶ Backlight LCD display, dual waterway online monitoring, which can simultaneously display RO conductivity value, UP or DI resistivity value and equipment operating status indication;
- ▶ Menu-type operation, which can modify and set multiple measurement parameters; with multiple operating status displays and indicator lights to promptly reflect the operating status of the equipment, high-pressure shutdown, low-pressure alarm, full water shutdown, etc.
- ▶ RO water Ultra-pure water water quality alarm warning prompt Automatic replacement of the filter element, you can set the water withdrawal time and take water regularly and quantitatively; touch the button to take the water, the RO UP water indicator will automatically prompt;
- ▶ Floor-standing design, with movable and fixed feet at the bottom, making installation and movement more convenient.
- ▶ RO water, deionized water, two kinds of water outlets.
- ▶ Multiple safety protection, exquisite chassis and beautiful appearance.
- ▶ Free portable TDS water quality testing pen.
- ▶ Configure ultra-large capacity purification tank.
- ▶ The front of the machine is equipped with an independent water intake end.



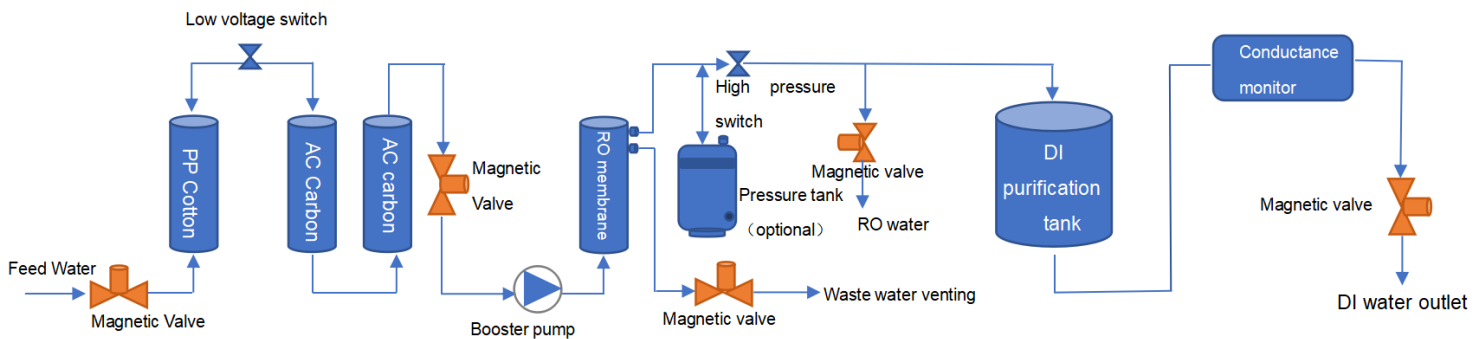
Application

Supply water for general biological experiments, microbial culture media, chemical&biochemical reagent preparation, photograph film process, stability chamber, meteorology laboratory equipment, hydrogen generator, humidifier etc.

Product parameter

Feed water request	TDS <200ppm, 5-45 °C, 1.0-3.5Kg / cm ²
Flow rate	1.5-2 L/Min (with pressure barrel)
Water making speed	60L/H
2 water outlets	RO water and DI water
RO water quality	TDS <10 ppm * Total salt rejection above 95%
DI water quality	
Conductivity	<0.1us/cm (0.01ms/m)
Resistivity	10-16MΩ-cm@25°C
Inorganic ion rejection	>96%
Soluble organic matter rejection	>99% (molecular weight >100)
Particulate matter rejection rate	>99%
Microbial retention rate	>99%
Machine size (L x W x H)	50 × 52 × 108cm
Standard configuration	Machine + 11 gallon pressure tank + accessory package
Power supply	220V 50/60Hz 72-240W

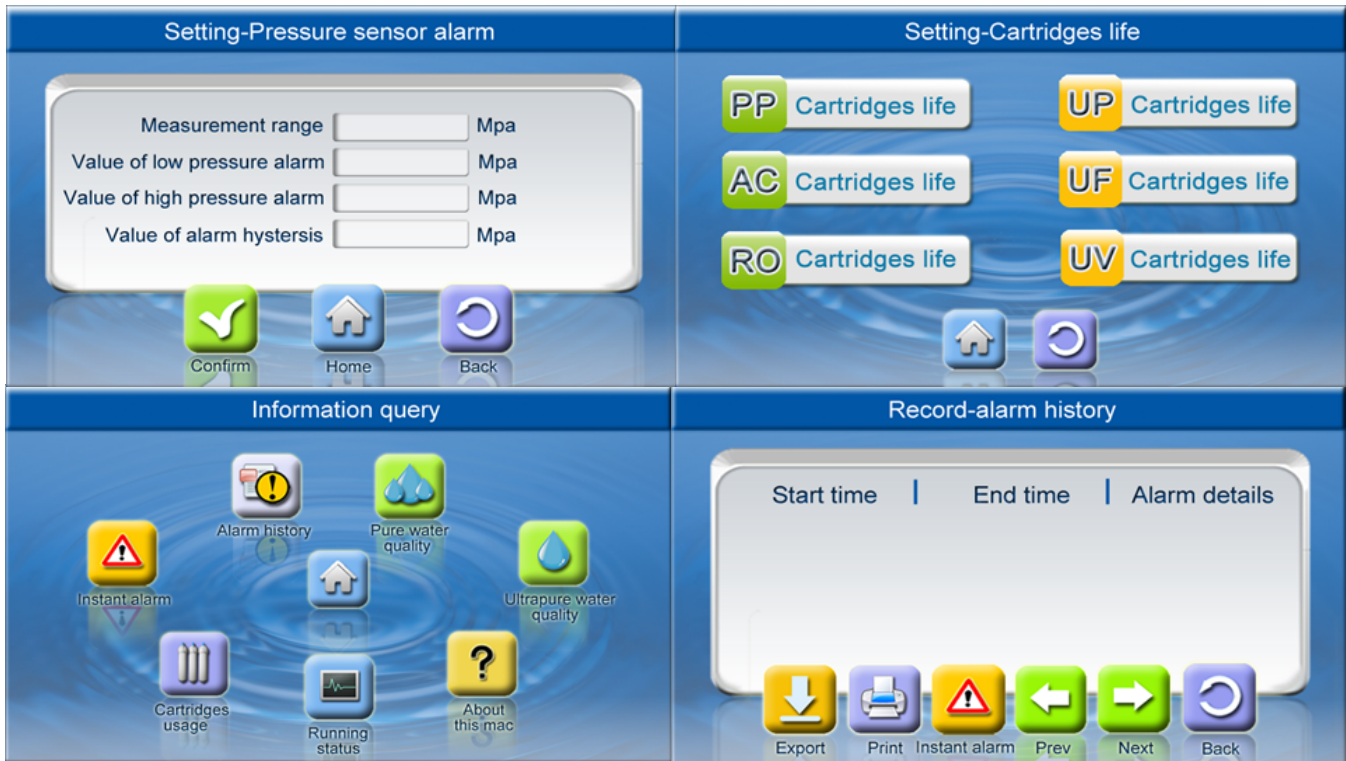
Process



Filter function:

- ✧ First stage: PP cotton (PPF filter with a pore size of 5 microns): Preliminary filtration of raw water to remove coarser particles, colloids, suspended solids, etc. in the water.
- ✧ Second stage: Granular activated carbon: high-efficiency adsorption of odor, color, organic matter, and heavy metals in water.
- ✧ Third stage: Compressed activated carbon: further remove residual chlorine, organic compounds, color, odor, turbidity, etc.
- ✧ The fourth stage: RO reverse osmosis membrane: 0.0001 micron pore size, effectively removes organic impurities such as viruses and heavy metals in water.
- ✧ The fifth stage: Deionization purification tank: remove most of the heavy metals and trace elements in the water, and the water quality meets the national laboratory water first-grade water standard.

Screen display



Product consumables list

No	Filter element	Replace cycle	Quantity	Remark
1	20'' 5 μ mPP cotton	About 4-6 month	1 pc	
2	20'' Refined activated carbon	About 4-6 month	2 pcs	
3	400 GPD RO membrane	About 1-2 years	1 pc	
4	12L deionized purification tank	About 25 tons	1 pc	

Note: The filter replacement cycle in the table is estimated based on previous customer experience. It is only a suggestion. The specific period is determined by the water quality.

Pure water transfer pump parameter

Delivery pump (flow pump) / L	Water pressure	Output flow / L (per minute)	Restart pressure	Disconnect pressure	Applicable water temperature	Maximum suction / m	Maximum elevation / meter
7L	0psi	7L/min	0.2Mpa	0.45Mpa	5°C-45°C	5m	15m