

OUTDOOR PHOTOMETRIC REPORT

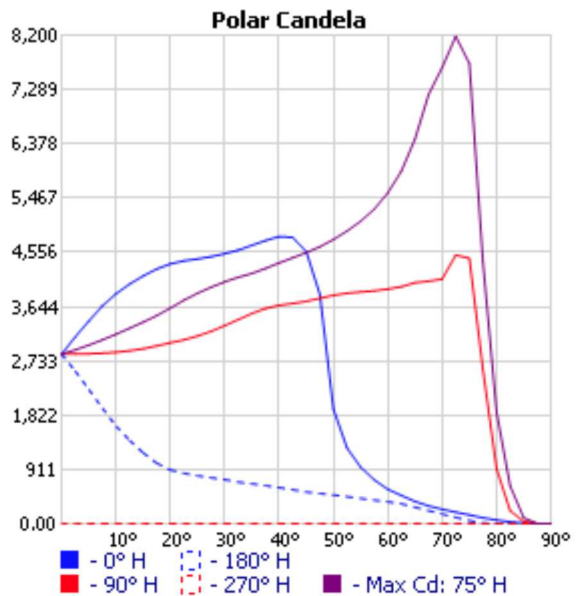
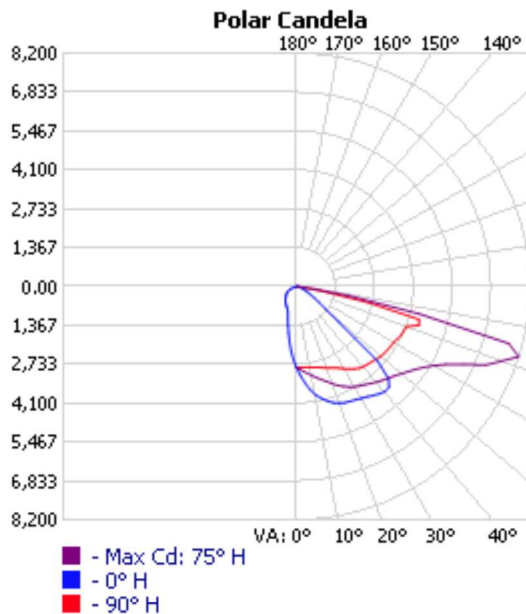
CATALOG: 130222.7L102.991.003



Manufacturer: LUG LIGHT FACTORY
 Test #: 13145
 Test Date: 20-03-2024
 Catalog: 130222.7L102.991.003
 Description: URBINO LED ED D4i 11200lm/740 O28 gray II kl. mod. 003
 Lamp Catalog: LED 4000K
 Lamp Output: 1 lamp, rated Lumens/lamp: 11200
 Input Wattage: 80
 Luminous Opening: Rectangle (L: 0.22M, W: 0.19M)
 Max Cd: 8,185.2 at Horizontal: 75°, Vertical: 72.5°
 CUTOFF CLASS: Semicutoff
 Roadway Class: MEDIUM, TYPE II
 Efficiency: 62.3%

No
Photo
Available

See report notes **

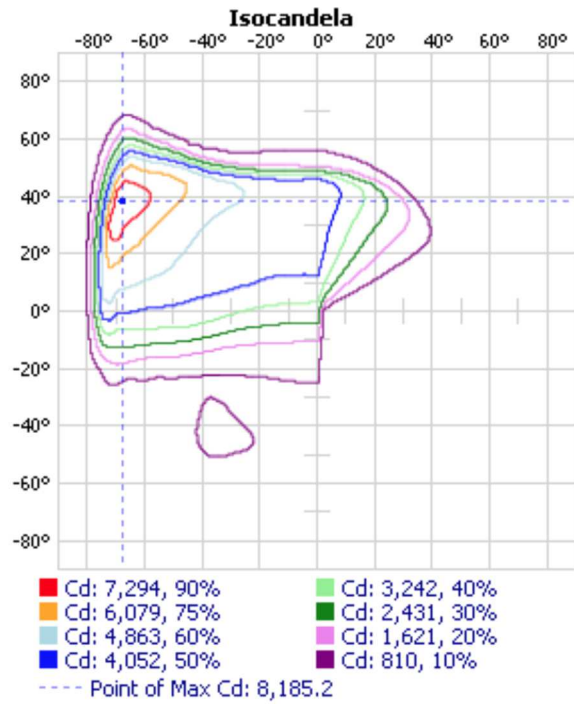
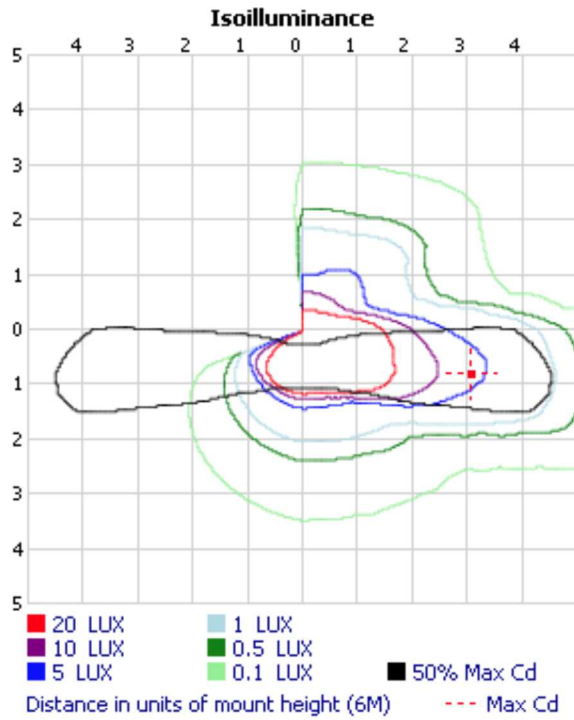


**File does not include sufficient vertical data to properly calculate BUG and LCS upright.

**File does not include upper hemisphere data(90-180) and has Cd > 0 at 90° vertical.

Visual Photometric Tool 1.2.46 copyright 2024, Acuity Brands Lighting.

This Photometric report has been generated using methods recommended by the IESNA. Calculations are based on Photometric data provided by the manufacturer, and the accuracy of this photometric report is dependent on the accuracy of the data provided. End-user environment and application (including, but not limited to, voltage variation and dirt accumulation) can cause actual Photometric performance to differ from the performance calculated using the data provided by the manufacturer. This report is provided without warranty as to accuracy, completeness, reliability or otherwise. In no event will Acuity Brands Lighting be responsible for any loss resulting from any use of this report.



Zonal Lumen Summary

Zone	Lumens	% Lamp	% Luminaire
0-30	1,457.9	13%	20.9%
0-40	2,541.5	22.7%	36.4%
0-60	5,156.9	46%	74%
60-90	1,816.6	16.2%	26%
0-90	6,973.5	62.3%	100%

Lumens Per Zone

Zone	Lumens	% Total
0-10	169.8	2.4%
10-20	493.2	7.1%
20-30	794.9	11.4%
30-40	1,083.6	15.5%
40-50	1,348.3	19.3%
50-60	1,267.2	18.2%
60-70	1,089.1	15.6%
70-80	678.3	9.7%
80-90	49.2	0.7%

OUTDOOR PHOTOMETRIC REPORT

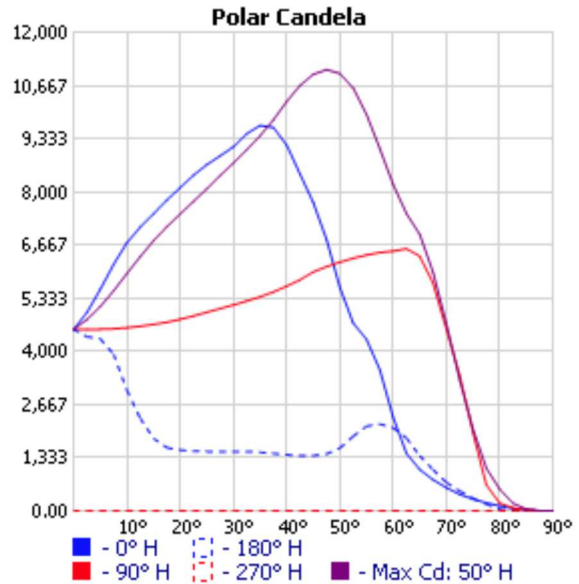
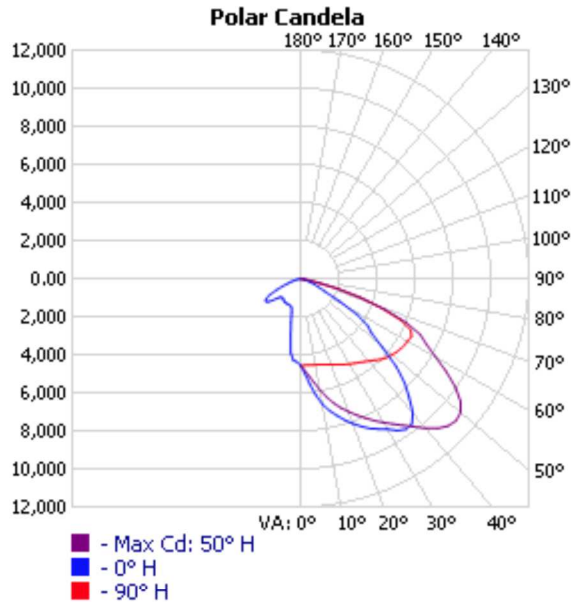
CATALOG: 130222.7L492.491.002



Manufacturer: LUG LIGHT FACTORY
Test #: 13140
Test Date: 20-03-2024
Catalog: 130222.7L492.491.002
Description: URBINO LED ED D4i 21000lm/740 O73 gray II kl. mod. 002
Lamp Catalog: LED 4000K
Lamp Output: 1 lamp, rated Lumens/lamp: 21000
Input Wattage: 150
Luminous Opening: Rectangle (L: 0.33M, W: 0.23M)
Max Cd: 11,067.8 at Horizontal: 50°, Vertical: 47.5°
CUTOFF CLASS: Cutoff
Roadway Class: VERY SHORT, TYPE II
Efficiency: 62.4%

No
Photo
Available

See report notes **

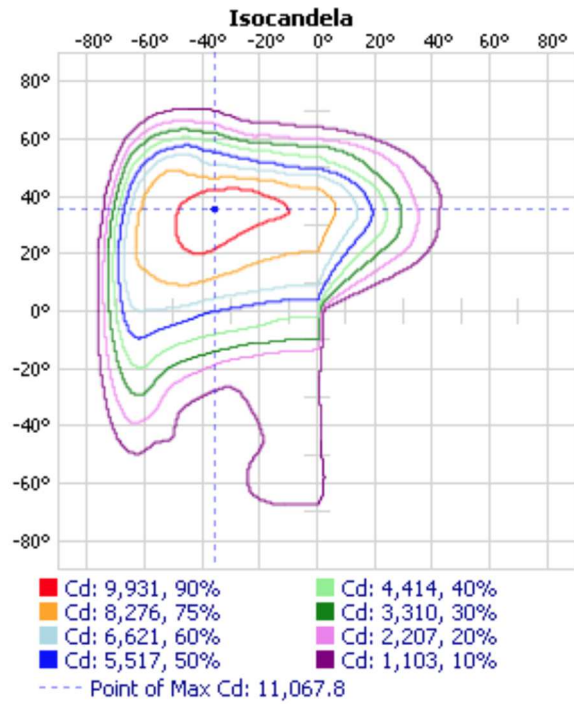
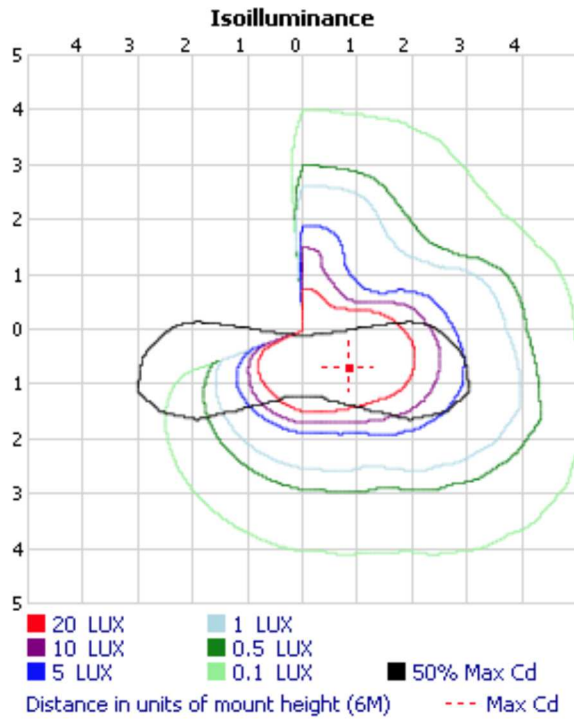


**File does not include sufficient vertical data to properly calculate BUG and LCS upright.

**File does not include upper hemisphere data(90-180) and has Cd > 0 at 90° vertical.

Visual Photometric Tool 1.2.46 copyright 2024, Acuity Brands Lighting.

This Photometric report has been generated using methods recommended by the IESNA. Calculations are based on Photometric data provided by the manufacturer, and the accuracy of this Photometric report is dependent on the accuracy of the data provided. End-user environment and application (including, but not limited to, voltage variation and dirt accumulation) can cause actual Photometric performance to differ from the performance calculated using the data provided by the manufacturer. This report is provided without warranty as to accuracy, completeness, reliability or otherwise. In no event will Acuity Brands Lighting be responsible for any loss resulting from any use of this report.



Zonal Lumen Summary

Zone	Lumens	% Lamp	% Luminaire
0-30	2,629.4	12.5%	20.1%
0-40	4,796.0	22.8%	36.6%
0-60	10,139.4	48.3%	77.4%
60-90	2,958.2	14.1%	22.6%
0-90	13,097.5	62.4%	100%

Lumens Per Zone

Zone	Lumens	% Total
0-10	288.9	2.2%
10-20	863.4	6.6%
20-30	1,477.0	11.3%
30-40	2,166.6	16.5%
40-50	2,692.9	20.6%
50-60	2,650.5	20.2%
60-70	2,111.6	16.1%
70-80	804.4	6.1%
80-90	42.2	0.3%

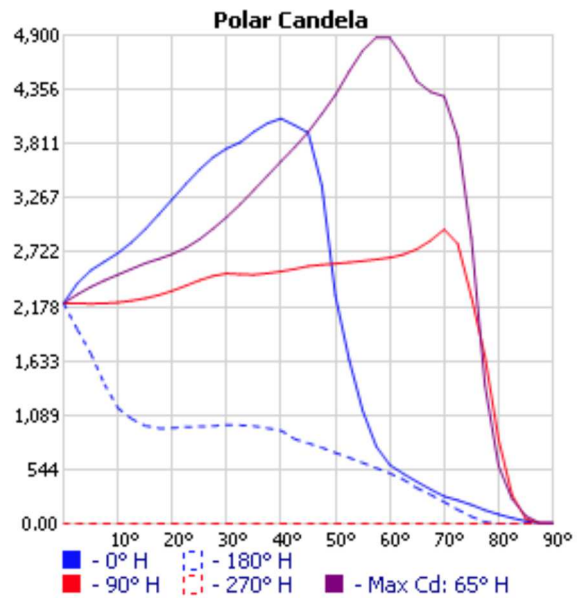
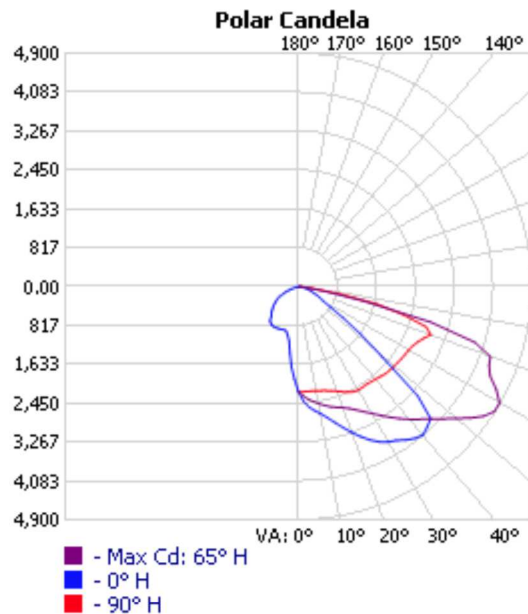
OUTDOOR PHOTOMETRIC REPORT

CATALOG: 130222.7L782.681.002

Manufacturer: LUG Light Factory
 Test #: 13312
 Test Date: 20-03-2024
 Catalog: 130222.7L782.681.002
 Description: URBINO LED ED D4i 9300lm/740 O92 gray II kl. mod. 002
 Lamp Catalog: LED
 Lamp Output: 1 lamp, rated Lumens/lamp: 9300
 Input Wattage: 59.5
 Luminous Opening: Rectangle (L: 0.22M, W: 0.19M)
 Max Cd: 4,879.7 at Horizontal: 65°, Vertical: 57.5°
 CUTOFF CLASS: Semicutoff
 Roadway Class: SHORT, TYPE II
 Efficiency: 62.4%

No
Photo
Available

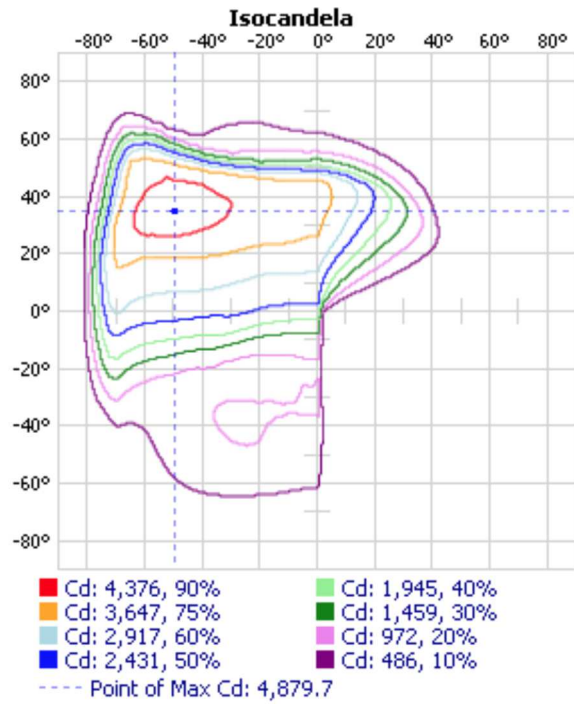
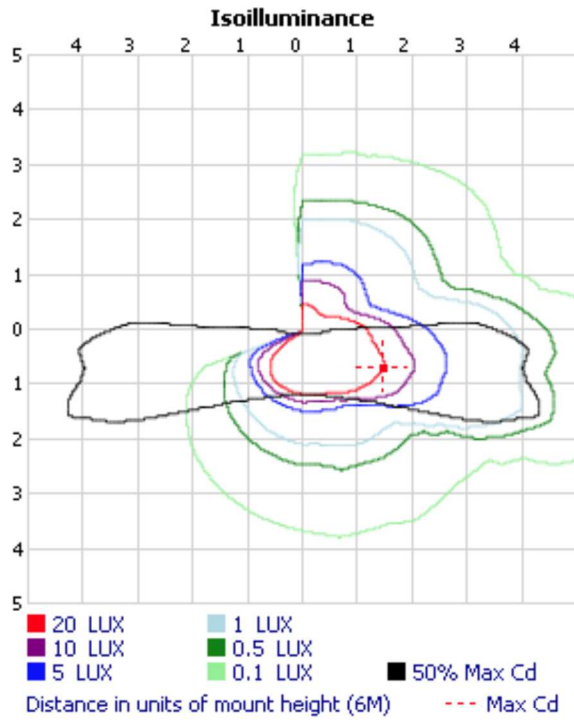
See report notes **



**File does not include sufficient vertical data to properly calculate BUG and LCS upright.
 **File does not include upper hemisphere data(90-180) and has Cd > 0 at 90° vertical.

Visual Photometric Tool 1.2.46 copyright 2024, Acuity Brands Lighting.

This Photometric report has been generated using methods recommended by the IESNA. Calculations are based on Photometric data provided by the manufacturer, and the accuracy of this Photometric report is dependent on the accuracy of the data provided. End-user environment and application (including, but not limited to, voltage variation and dirt accumulation) can cause actual Photometric performance to differ from the performance calculated using the data provided by the manufacturer. This report is provided without warranty as to accuracy, completeness, reliability or otherwise. In no event will Acuity Brands Lighting be responsible for any loss resulting from any use of this report.



Zonal Lumen Summary

Zone	Lumens	% Lamp	% Luminaire
0-30	1,127.4	12.1%	19.4%
0-40	2,066.2	22.2%	35.6%
0-60	4,380.8	47.1%	75.5%
60-90	1,418.7	15.3%	24.5%
0-90	5,799.4	62.4%	100%

Lumens Per Zone

Zone	Lumens	% Total
0-10	127.2	2.2%
10-20	363.8	6.3%
20-30	636.5	11.0%
30-40	938.8	16.2%
40-50	1,189.6	20.5%
50-60	1,124.9	19.4%
60-70	887.0	15.3%
70-80	487.4	8.4%
80-90	44.3	0.8%

OUTDOOR PHOTOMETRIC REPORT

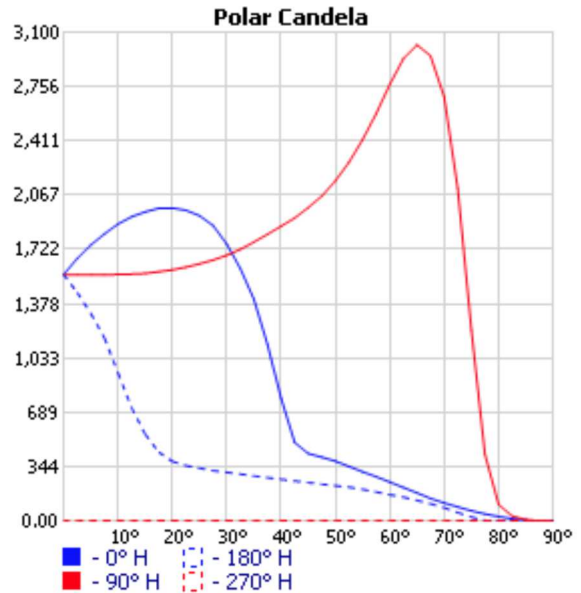
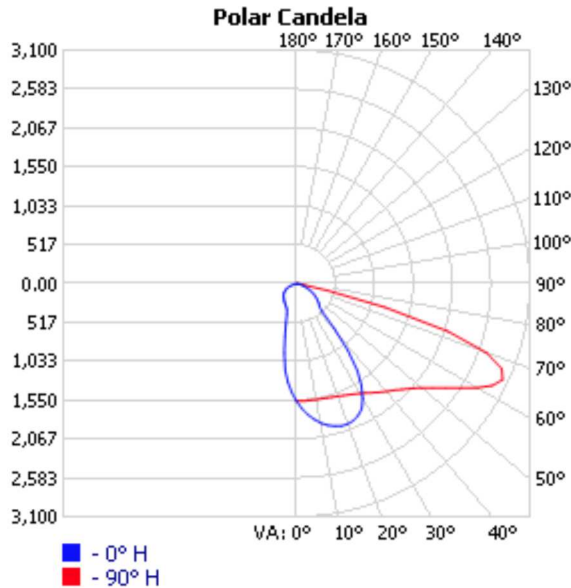
CATALOG: 130782.7L122.110.049



Manufacturer: LUG LIGHT FACTORY
 Test #: 13150
 Test Date: 20-03-2024
 Catalog: 130782.7L122.110.049
 Description: URBINO S HE ED 4300lm/740 O11 szary C4 II kl. Mod. 049
 Lamp Catalog: LED 4000K
 Lamp Output: 1 lamp, rated Lumens/lamp: 4300
 Input Wattage: 30
 Luminous Opening: Rectangle (L: 0.18M, W: 0.15M)
 Max Cd: 3,021.3 at Horizontal: 90°, Vertical: 65°
 CUTOFF CLASS: Cutoff
 Roadway Class: SHORT, TYPE I
 Efficiency: 62.3%

No
Photo
Available

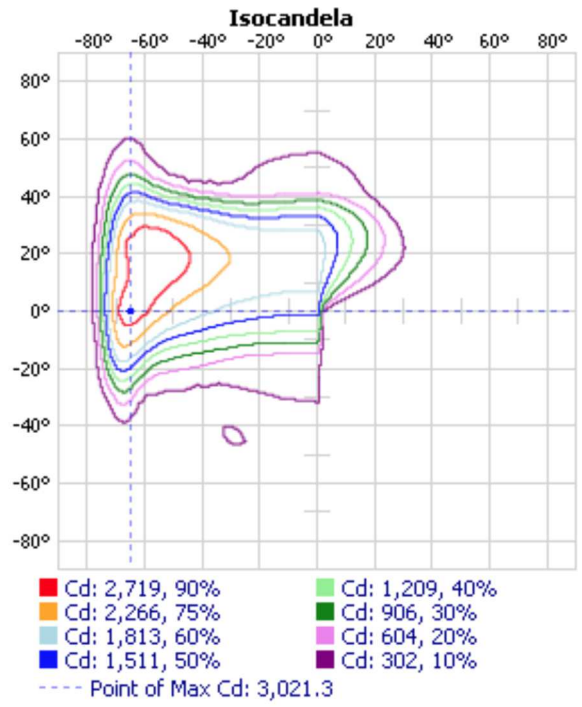
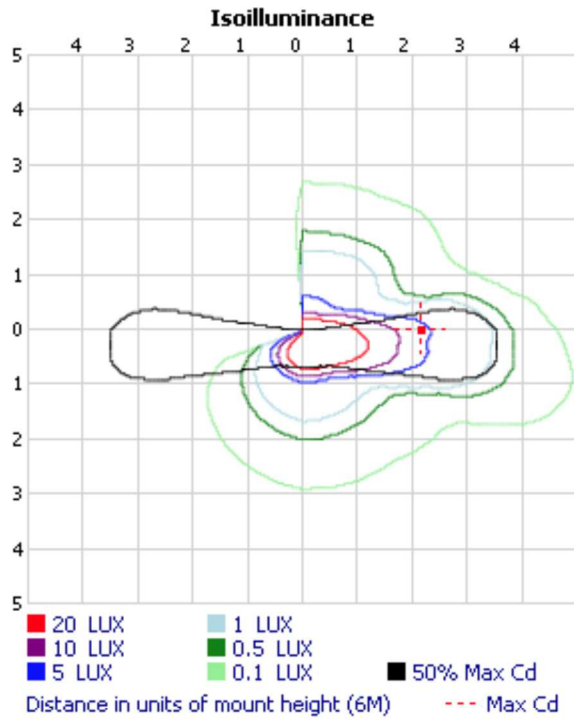
See report notes **



**File does not include sufficient vertical data to properly calculate BUG and LCS upright.
 **File does not include upper hemisphere data(90-180) and has Cd > 0 at 90° vertical.

Visual Photometric Tool 1.2.46 copyright 2024, Acuity Brands Lighting.

This Photometric report has been generated using methods recommended by the IESNA. Calculations are based on Photometric data provided by the manufacturer, and the accuracy of this Photometric report is dependent on the accuracy of the data provided. End-user environment and application (including, but not limited to, voltage variation and dirt accumulation) can cause actual Photometric performance to differ from the performance calculated using the data provided by the manufacturer. This report is provided without warranty as to accuracy, completeness, reliability or otherwise. In no event will Acuity Brands Lighting be responsible for any loss resulting from any use of this report.



Zonal Lumen Summary

Zone	Lumens	% Lamp	% Luminaire
0-30	717.8	16.7%	26.8%
0-40	1,185.6	27.6%	44.3%
0-60	2,105.9	49%	78.6%
60-90	572.9	13.3%	21.4%
0-90	2,678.8	62.3%	100%

Lumens Per Zone

Zone	Lumens	% Total
0-10	91.6	3.4%
10-20	248.3	9.3%
20-30	377.9	14.1%
30-40	467.9	17.5%
40-50	466.1	17.4%
50-60	454.2	17.0%
60-70	391.9	14.6%
70-80	171.4	6.4%
80-90	9.5	0.4%

OUTDOOR PHOTOMETRIC REPORT

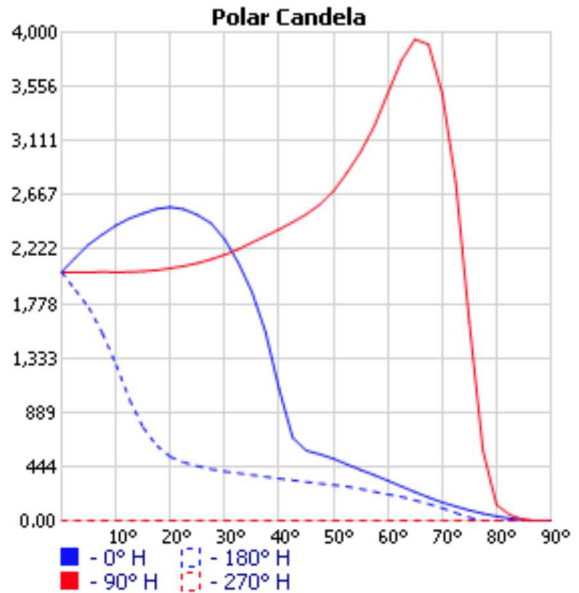
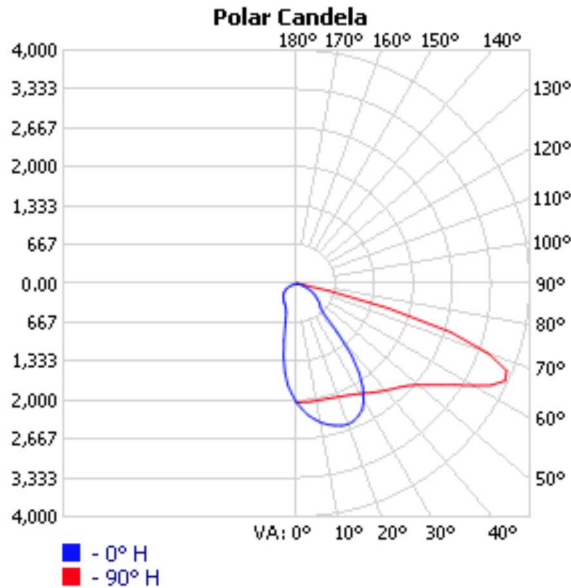
CATALOG: 130782.7L122.110.050



Manufacturer: LUG LIGHT FACTORY
 Test #: 13262
 Test Date: 20-03-2024
 Catalog: 130782.7L122.110.050
 Description: URBINO LED S ED D4i 5600lm/740 O11 gray II kl. mod. 050
 Lamp Catalog: LED 4000K
 Lamp Output: 1 lamp, rated Lumens/lamp: 5600
 Input Wattage: 39
 Luminous Opening: Rectangle (L: 0.18M, W: 0.15M)
 Max Cd: 3,943.4 at Horizontal: 90°, Vertical: 65°
 CUTOFF CLASS: Cutoff
 Roadway Class: SHORT, TYPE I
 Efficiency: 62.3%

No
 Photo
 Available

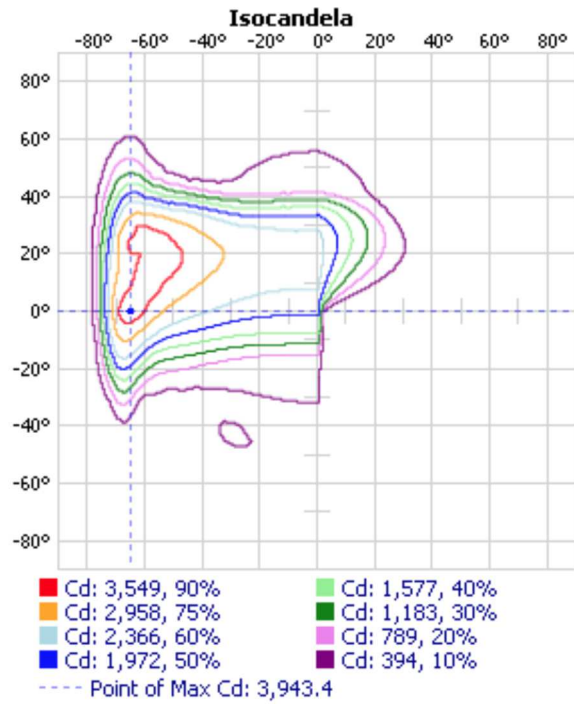
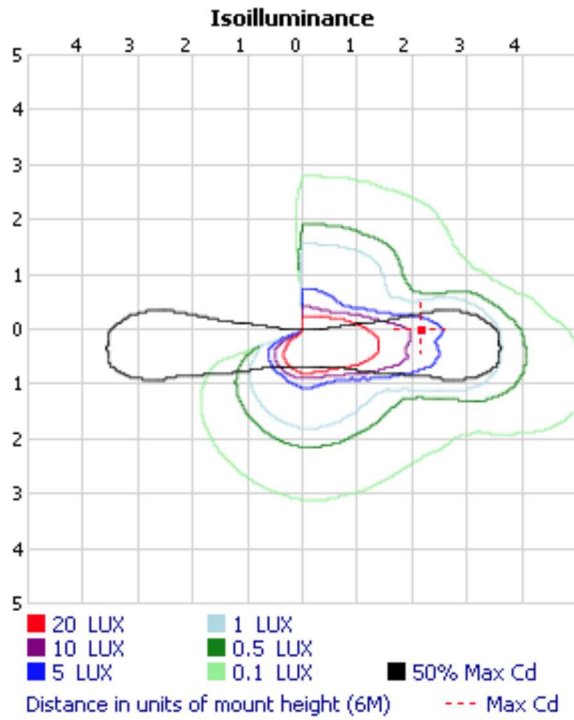
See report notes **



**File does not include sufficient vertical data to properly calculate BUG and LCS upright.
 **File does not include upper hemisphere data(90-180) and has Cd > 0 at 90° vertical.

Visual Photometric Tool 1.2.46 copyright 2024, Acuity Brands Lighting.

This Photometric report has been generated using methods recommended by the IESNA. Calculations are based on Photometric data provided by the manufacturer, and the accuracy of this Photometric report is dependent on the accuracy of the data provided. End-user environment and application (including, but not limited to, voltage variation and dirt accumulation) can cause actual Photometric performance to differ from the performance calculated using the data provided by the manufacturer. This report is provided without warranty as to accuracy, completeness, reliability or otherwise. In no event will Acuity Brands Lighting be responsible for any loss resulting from any use of this report.



Zonal Lumen Summary

Zone	Lumens	% Lamp	% Luminaire
0-30	936.4	16.7%	26.8%
0-40	1,547.4	27.6%	44.4%
0-60	2,744.2	49%	78.7%
60-90	744.8	13.3%	21.3%
0-90	3,488.9	62.3%	100%

Lumens Per Zone

Zone	Lumens	% Total
0-10	119.6	3.4%
10-20	324.9	9.3%
20-30	491.9	14.1%
30-40	611.1	17.5%
40-50	608.2	17.4%
50-60	588.5	16.9%
60-70	504.1	14.4%
70-80	226.7	6.5%
80-90	13.9	0.4%

OUTDOOR PHOTOMETRIC REPORT

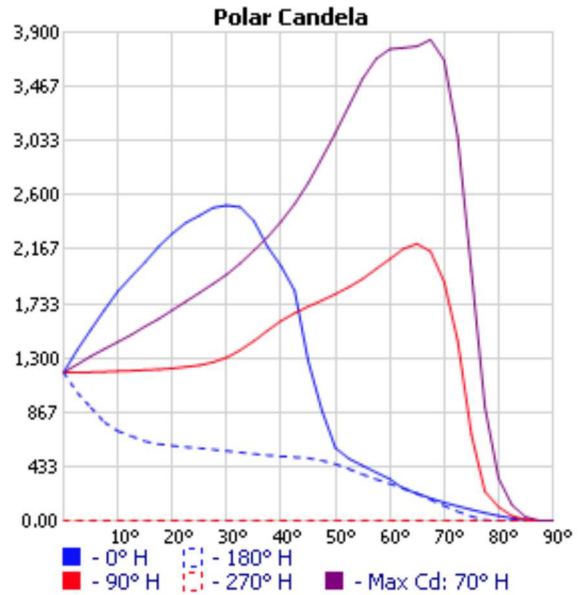
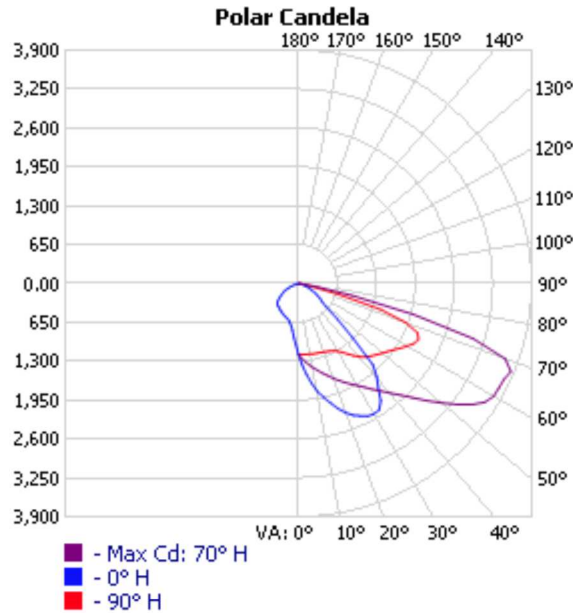
CATALOG: 130782.7L122.120.005



Manufacturer: LUG Light Factory
 Test #: 13273
 Test Date: 20-03-2024
 Catalog: 130782.7L122.120.005
 Description: URBINO LED S ED D4i 5650lm/740 O12 gray II kl. mod. 005
 Lamp Catalog: LED
 Lamp Output: 1 lamp, rated Lumens/lamp: 5650
 Input Wattage: 39.5
 Luminous Opening: Rectangle (L: 0.18M, W: 0.15M)
 Max Cd: 3,841.5 at Horizontal: 70°, Vertical: 67.5°
 CUTOFF CLASS: Cutoff
 Roadway Class: MEDIUM, TYPE II
 Efficiency: 62.3%

No
Photo
Available

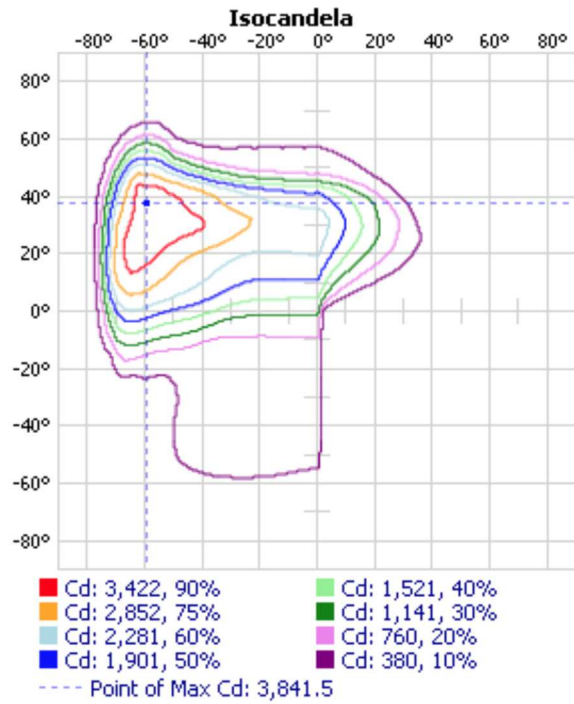
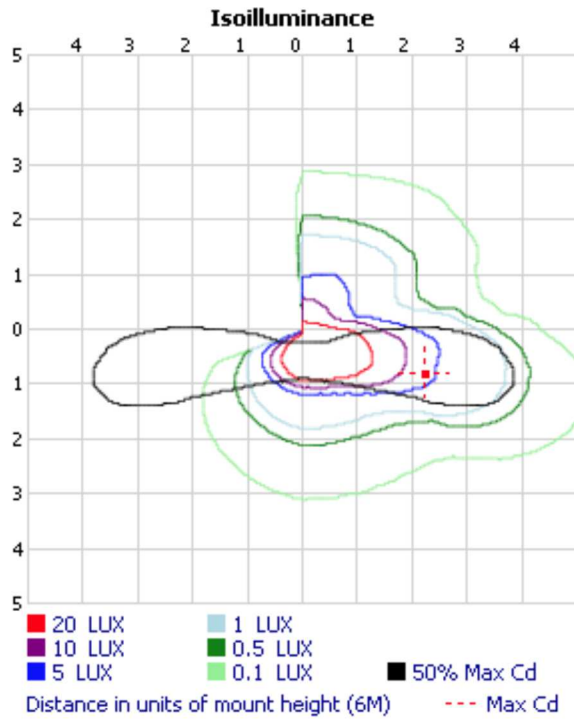
See report notes **



**File does not include sufficient vertical data to properly calculate BUG and LCS upright.
 **File does not include upper hemisphere data(90-180) and has Cd > 0 at 90° vertical.

Visual Photometric Tool 1.2.46 copyright 2024, Acuity Brands Lighting.

This Photometric report has been generated using methods recommended by the IESNA. Calculations are based on Photometric data provided by the manufacturer, and the accuracy of this Photometric report is dependent on the accuracy of the data provided. End-user environment and application (including, but not limited to, voltage variation and dirt accumulation) can cause actual Photometric performance to differ from the performance calculated using the data provided by the manufacturer. This report is provided without warranty as to accuracy, completeness, reliability or otherwise. In no event will Acuity Brands Lighting be responsible for any loss resulting from any use of this report.



Zonal Lumen Summary

Zone	Lumens	% Lamp	% Luminaire
0-30	697.1	12.3%	19.8%
0-40	1,280.1	22.7%	36.3%
0-60	2,670.9	47.3%	75.8%
60-90	851.5	15.1%	24.2%
0-90	3,522.3	62.3%	100%

Lumens Per Zone

Zone	Lumens	% Total
0-10	72.5	2.1%
10-20	227.3	6.5%
20-30	397.4	11.3%
30-40	583.0	16.6%
40-50	707.8	20.1%
50-60	682.9	19.4%
60-70	575.7	16.3%
70-80	259.7	7.4%
80-90	16.1	0.5%

OUTDOOR PHOTOMETRIC REPORT

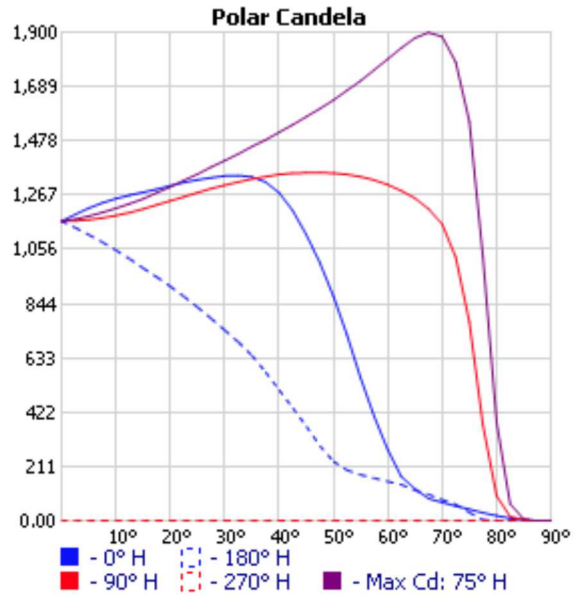
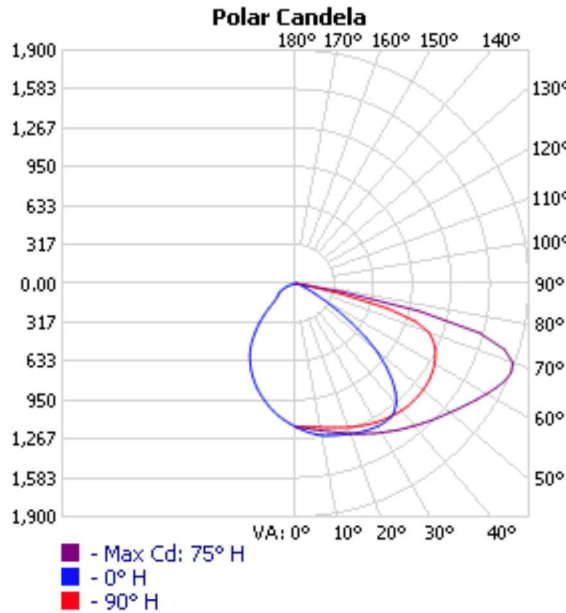
CATALOG: 130782.7L122.130.006



Manufacturer: LUG LIGHT FACTORY
 Test #: 13149
 Test Date: 20-03-2024
 Catalog: 130782.7L122.130.006
 Description: URBINO LED S ED D4i 4250lm/740 O13 gray II kl. mod. 006
 Lamp Catalog: LED 4000K
 Lamp Output: 1 lamp, rated Lumens/lamp: 4250
 Input Wattage: 30
 Luminous Opening: Rectangle (L: 0.18M, W: 0.15M)
 Max Cd: 1,899.2 at Horizontal: 75°, Vertical: 67.5°
 CUTOFF CLASS: Cutoff
 Roadway Class: MEDIUM, TYPE III
 Efficiency: 62.4%

No
Photo
Available

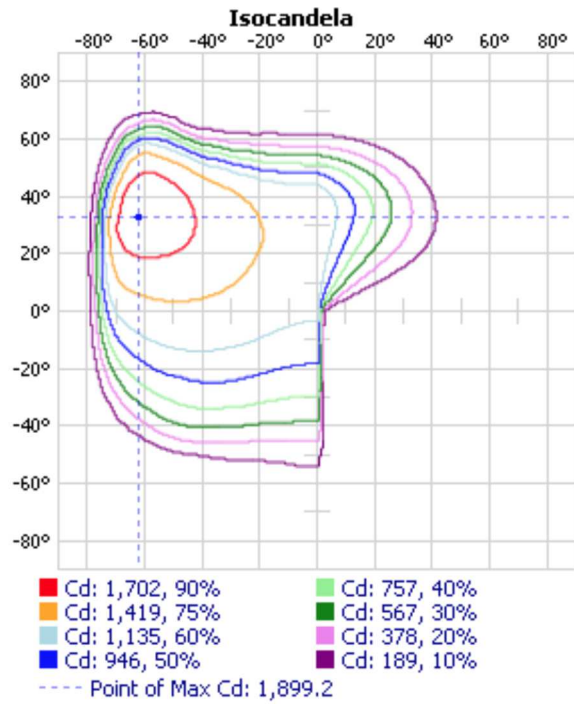
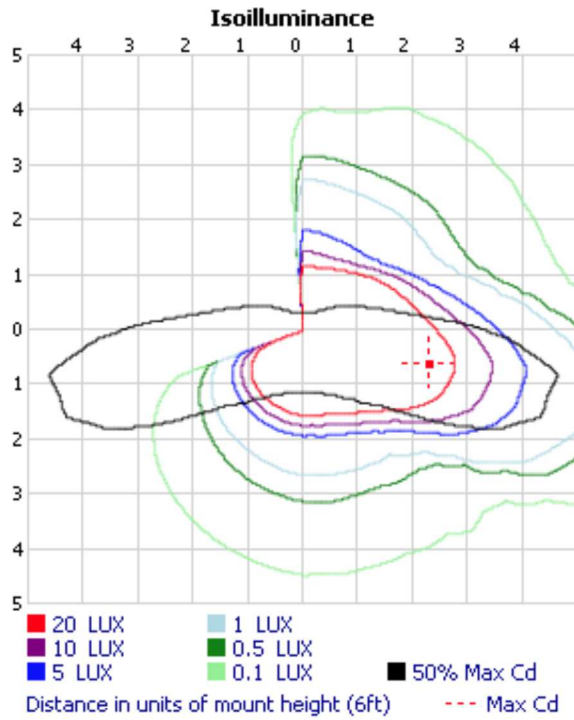
See report notes **



**File does not include sufficient vertical data to properly calculate BUG and LCS upright.
 **File does not include upper hemisphere data(90-180) and has Cd > 0 at 90° vertical.

Visual Photometric Tool 1.2.46 copyright 2024, Acuity Brands Lighting.

This Photometric report has been generated using methods recommended by the IESNA. Calculations are based on Photometric data provided by the manufacturer, and the accuracy of this Photometric report is dependent on the accuracy of the data provided. End-user environment and application (including, but not limited to, voltage variation and dirt accumulation) can cause actual Photometric performance to differ from the performance calculated using the data provided by the manufacturer. This report is provided without warranty as to accuracy, completeness, reliability or otherwise. In no event will Acuity Brands Lighting be responsible for any loss resulting from any use of this report.



Zonal Lumen Summary

Zone	Lumens	% Lamp	% Luminaire
0-30	620.7	14.6%	23.4%
0-40	1,077.0	25.3%	40.6%
0-60	2,081.3	49%	78.4%
60-90	572.0	13.5%	21.6%
0-90	2,653.2	62.4%	100%

Lumens Per Zone

Zone	Lumens	% Total
0-10	70.2	2.6%
10-20	208.9	7.9%
20-30	341.6	12.9%
30-40	456.3	17.2%
40-50	517.3	19.5%
50-60	486.9	18.4%
60-70	373.3	14.1%
70-80	189.3	7.1%
80-90	9.3	0.4%

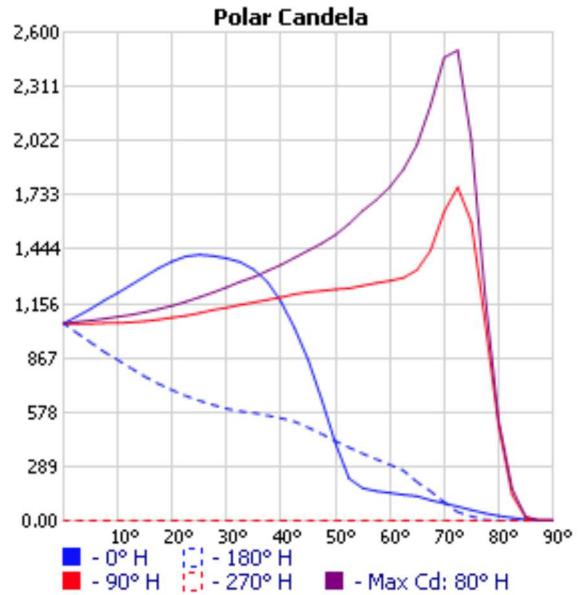
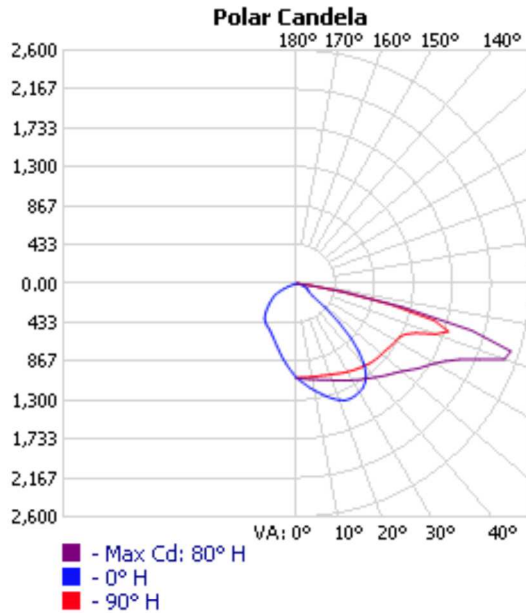
OUTDOOR PHOTOMETRIC REPORT

CATALOG: 130782.7L122.140.017

Manufacturer: LUG Light Factory
 Test #: 12786
 Test Date: 20-03-2024
 Catalog: 130782.7L122.140.017
 Description: URBINO LED S ED D4i 4000lm/740 O14 gray II kl. mod. 017
 Lamp Catalog: LED
 Lamp Output: 1 lamp, rated Lumens/lamp: 4000
 Input Wattage: 26
 Luminous Opening: Rectangle (L: 0.18M, W: 0.15M)
 Max Cd: 2,504.3 at Horizontal: 80°, Vertical: 72.5°
 CUTOFF CLASS: Semicutoff
 Roadway Class: MEDIUM, TYPE II
 Efficiency: 62.5%

No
Photo
Available

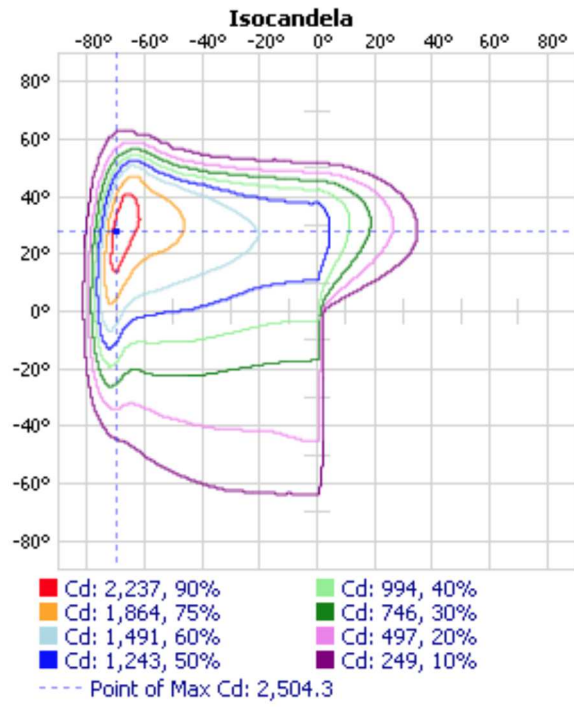
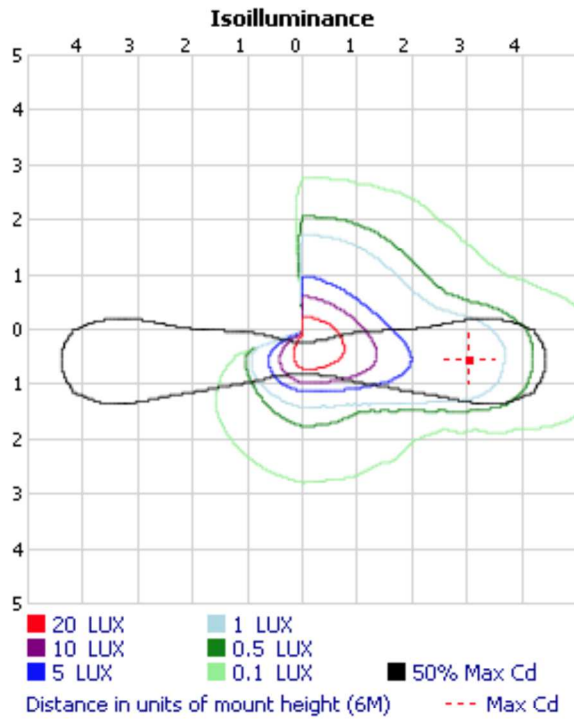
See report notes **



**File does not include sufficient vertical data to properly calculate BUG and LCS upright.
 **File does not include upper hemisphere data(90-180) and has Cd > 0 at 90° vertical.

Visual Photometric Tool 1.2.46 copyright 2024, Acuity Brands Lighting.

This Photometric report has been generated using methods recommended by the IESNA. Calculations are based on Photometric data provided by the manufacturer, and the accuracy of this Photometric report is dependent on the accuracy of the data provided. End-user environment and application (including, but not limited to, voltage variation and dirt accumulation) can cause actual Photometric performance to differ from the performance calculated using the data provided by the manufacturer. This report is provided without warranty as to accuracy, completeness, reliability or otherwise. In no event will Acuity Brands Lighting be responsible for any loss resulting from any use of this report.



Zonal Lumen Summary

Zone	Lumens	% Lamp	% Luminaire
0-30	559.9	14%	22.4%
0-40	978.9	24.5%	39.2%
0-60	1,890.9	47.3%	75.7%
60-90	608.1	15.2%	24.3%
0-90	2,499.0	62.5%	100%

Lumens Per Zone

Zone	Lumens	% Total
0-10	62.7	2.5%
10-20	186.9	7.5%
20-30	310.3	12.4%
30-40	419.0	16.8%
40-50	474.5	19.0%
50-60	437.5	17.5%
60-70	368.4	14.7%
70-80	223.8	9.0%
80-90	15.9	0.6%

OUTDOOR PHOTOMETRIC REPORT

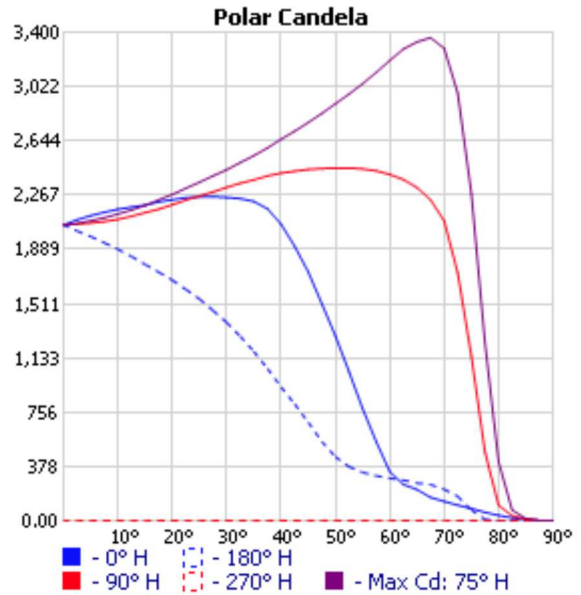
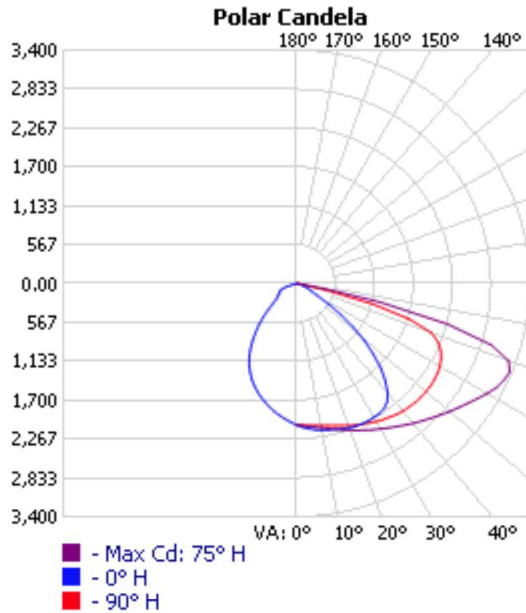
CATALOG: 130782.7L242.130.010



Manufacturer: LUG LIGHT FACTORY
 Test #: 13142
 Test Date: 20-03-2024
 Catalog: 130782.7L242.130.010
 Description: URBINO LED S ED D4i 7400lm/740 O13 gray II kl. mod. 010
 Lamp Catalog: LED 4000K
 Lamp Output: 1 lamp, rated Lumens/lamp: 7400
 Input Wattage: 50
 Luminous Opening: Rectangle (L: 0.18M, W: 0.15M)
 Max Cd: 3,362.9 at Horizontal: 75°, Vertical: 67.5°
 CUTOFF CLASS: Cutoff
 Roadway Class: MEDIUM, TYPE II
 Efficiency: 62.5%

No
Photo
Available

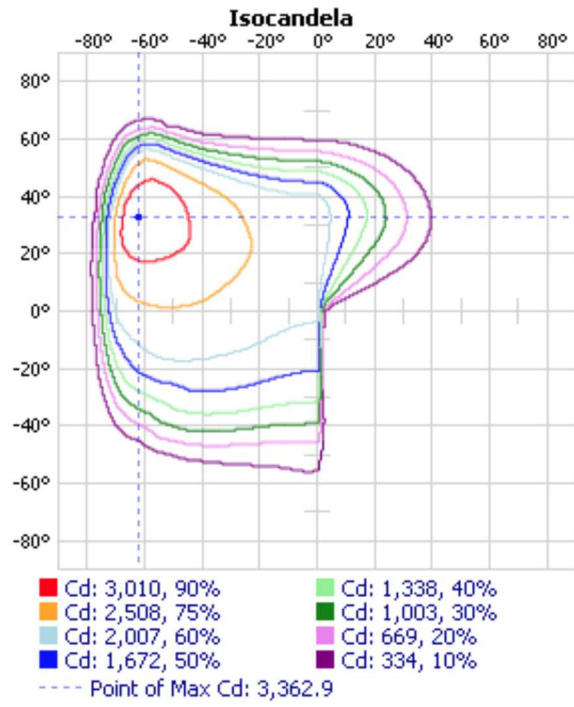
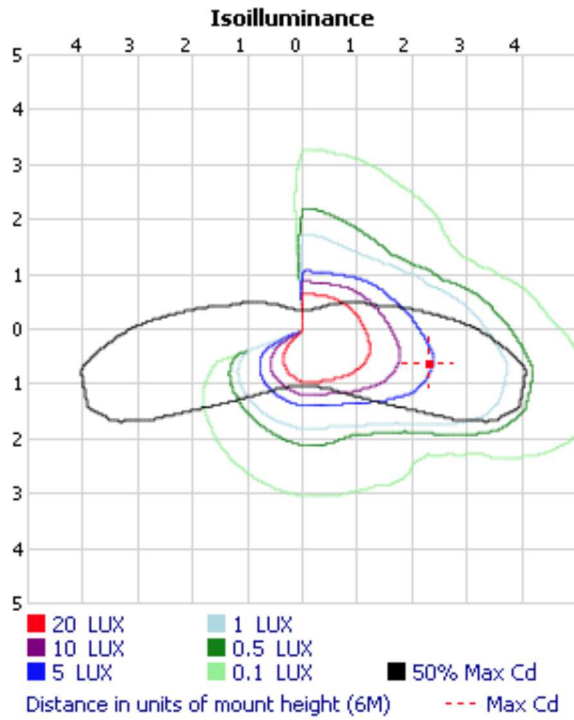
See report notes **



**File does not include sufficient vertical data to properly calculate BUG and LCS upright.
 **File does not include upper hemisphere data(90-180) and has Cd > 0 at 90° vertical.

Visual Photometric Tool 1.2.46 copyright 2024, Acuity Brands Lighting.

This Photometric report has been generated using methods recommended by the IESNA. Calculations are based on Photometric data provided by the manufacturer, and the accuracy of this photometric report is dependent on the accuracy of the data provided. End-user environment and application (including, but not limited to, voltage variation and dirt accumulation) can cause actual Photometric performance to differ from the performance calculated using the data provided by the manufacturer. This report is provided without warranty as to accuracy, completeness, reliability or otherwise. In no event will Acuity Brands Lighting be responsible for any loss resulting from any use of this report.



Zonal Lumen Summary

Zone	Lumens	% Lamp	% Luminaire
0-30	1,097.5	14.8%	23.7%
0-40	1,902.5	25.7%	41.2%
0-60	3,655.2	49.4%	79.1%
60-90	966.9	13.1%	20.9%
0-90	4,622.0	62.5%	100%

Lumens Per Zone

Zone	Lumens	% Total
0-10	123.9	2.7%
10-20	368.8	8.0%
20-30	604.8	13.1%
30-40	805.0	17.4%
40-50	905.6	19.6%
50-60	847.2	18.3%
60-70	653.8	14.1%
70-80	298.8	6.5%
80-90	14.3	0.3%

OUTDOOR PHOTOMETRIC REPORT

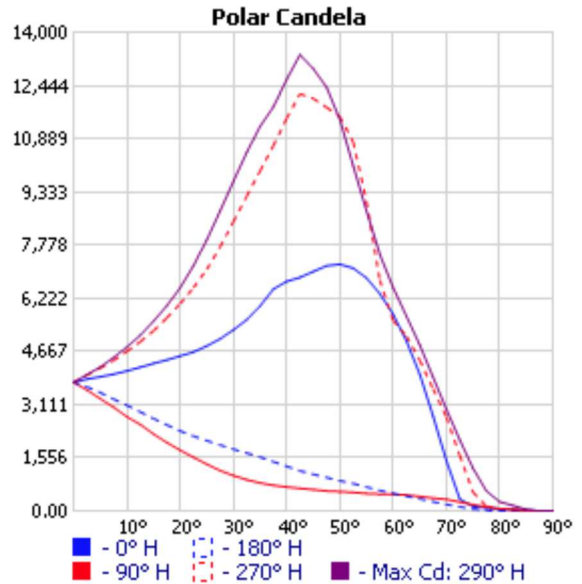
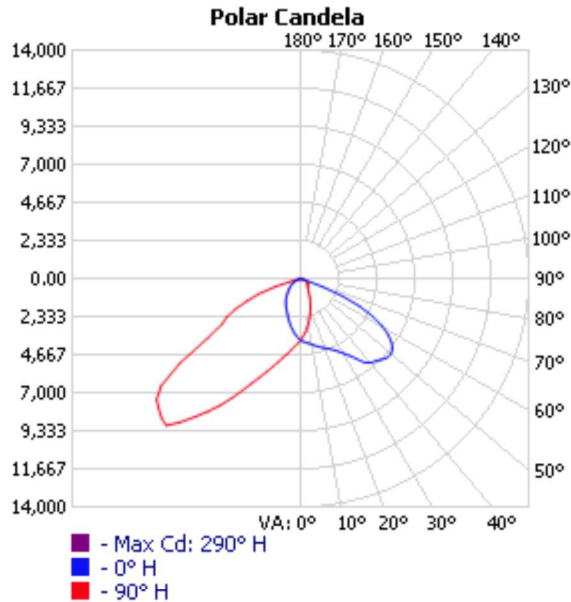
CATALOG: 130822.7L162.190.002



Manufacturer: LUG Light Factory
 Test #: 13320
 Test Date: 20-03-2024
 Catalog: 130822.7L162.190.002
 Description: URBINO IK10 ED D4i 15000lm/757 IP66 O19 gray II kl.nr mod.002
 Lamp Catalog: LED
 Lamp Output: 1 lamp, rated Lumens/lamp: 15000
 Input Wattage: 99
 Luminous Opening: Rectangle (L: 0.22M, W: 0.19M)
 Max Cd: 13,348.1 at Horizontal: 290°, Vertical: 42.5°
 CUTOFF CLASS: Cutoff
 Roadway Class: VERY SHORT, TYPE II
 Efficiency: 99.9%

No
Photo
Available

See report notes **



**File does not include sufficient vertical data to properly calculate BUG and LCS upright.

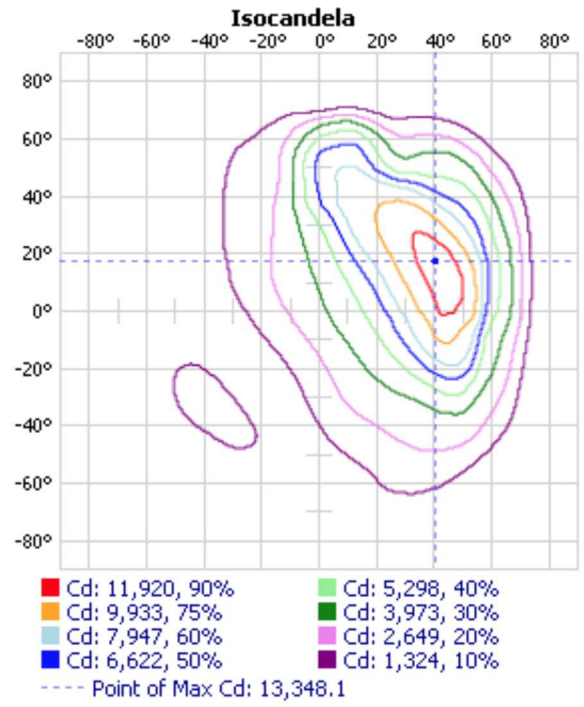
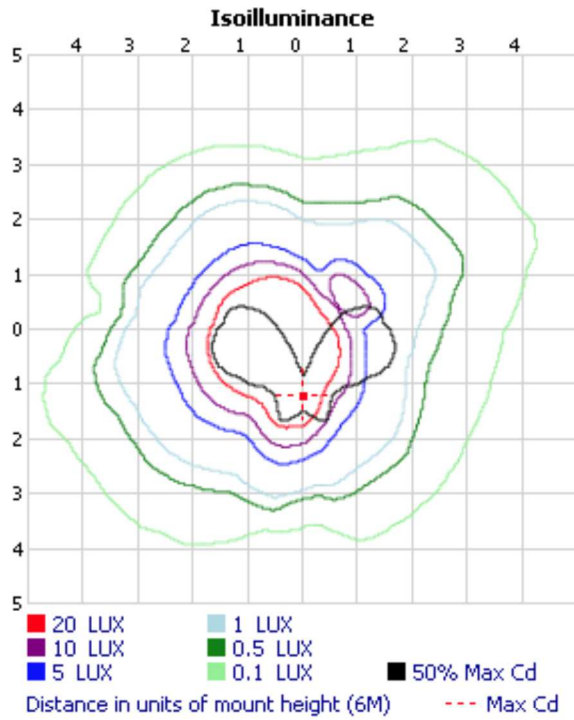
**File does not include upper hemisphere data(90-180) and has Cd > 0 at 90° vertical.

Visual Photometric Tool 1.2.46 copyright 2024, Acuity Brands Lighting.

This Photometric report has been generated using methods recommended by the IESNA. Calculations are based on Photometric data provided by the manufacturer, and the accuracy of this Photometric report is dependent on the accuracy of the data provided. End-user environment and application (including, but not limited to, voltage variation and dirt accumulation) can cause actual Photometric performance to differ from the performance calculated using the data provided by the manufacturer. This report is provided without warranty as to accuracy, completeness, reliability or otherwise. In no event will Acuity Brands Lighting be responsible for any loss resulting from any use of this report.



13320
VISUAL PHOTOMETRIC TOOL



Zonal Lumen Summary

Zone	Lumens	% Lamp	% Luminaire
0-30	3,209.2	21.4%	21.4%
0-40	5,990.8	39.9%	40%
0-60	12,541.4	83.6%	83.7%
60-90	2,442.9	16.3%	16.3%
0-90	14,984.3	99.9%	100%

Lumens Per Zone

Zone	Lumens	% Total
0-10	353.8	2.4%
10-20	1,041.9	7.0%
20-30	1,813.6	12.1%
30-40	2,781.6	18.6%
40-50	3,527.5	23.5%
50-60	3,023.0	20.2%
60-70	1,912.2	12.8%
70-80	497.8	3.3%
80-90	32.9	0.2%