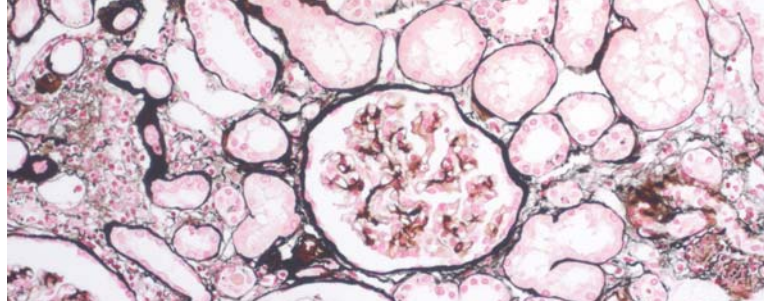


P.A.S. kit

Five-reagent Periodic Acid-Schiff kit for staining aldehydes, mucopolysaccharides, mucoproteins and lymphocytes according to Hotchkiss-McManus. P.A.S. staining may also be used for the demonstration of fungal organisms in tissue sections.

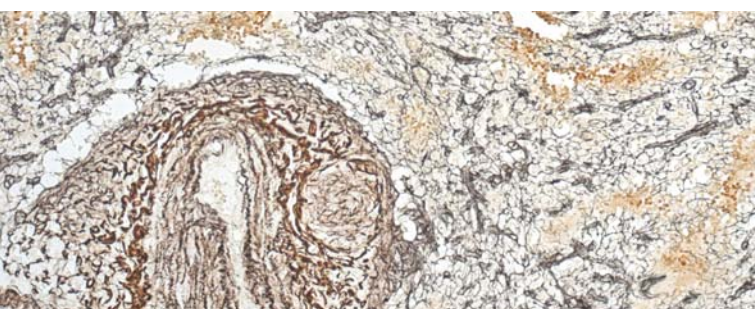
for 100 tests	PAS5-100T
5x100 mL	PAS5-K-100
5x500 mL	PAS5-K-500



P.A.S.M. / Jones kit

Six-reagent Periodic Acid Silver Methenamine kit for staining kidney glomerular basement membranes. Kit includes red counterstain which provides visually rich contrast to target structures stained black.

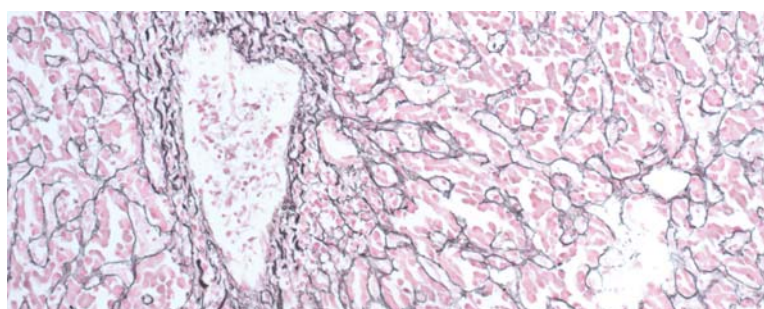
for 100 tests	PASM-100T
5x100 mL + 3x250 mL	PASM-K-100



Reticulin kit

Seven-reagent kit for detecting argyrophilic reticulin fibers. It clearly differentiates between collagen and reticulin and nerve fibers and connective tissue. The main function of reticular fibers is to provide support and are normally found in liver, lymph nodes, spleen and kidneys.

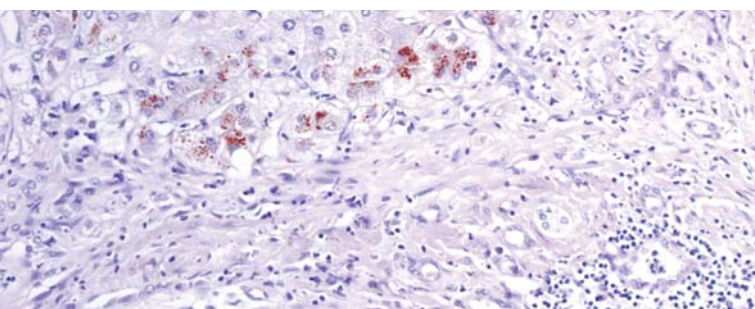
for 100 tests	RE-100T
7x50 mL	RE-K-50
7x100 mL	RE-K-100



Reticulin Contrast kit

Nine-reagent kit for detecting argyrophilic reticulin fibers according to Gordon and Sweets. The kit contains gold chloride solution that enhances visualization of reticulin fibers and it also contains Nuclear Fast Red (Kernechtrot) reagent that enables fine contrasting background.

for 100 tests	RET-100T
9x50 mL	RET-K-50
9x100 mL	RET-K-100



Rhodanine kit

Four-reagent kit for detecting copper and copper-associated protein (CAP) in patients suffering from Wilson's disease. Abnormal copper accumulations are predominately found in liver tissue, but can also be found in the brain and cornea of the eyes.

for 100 tests	ROD-100T
5x100 mL	ROD-K-100



Sperm-Diff RTU kit

Ready-to-Use three-reagent kit with reagents stored in containers that can be used as staining jars. Kit contains fixative reagent, red and blue components for fast and effective staining.

3x100 mL	SP-RTU-100
----------	------------

