

TECHNICAL DATASHEET FOR SUBMED SCRUB SUIT SERIES

Reference

NSS-001-2 NSS-001-3 NSS-001-4 NSS-001-5

Designation

SUBMED Surgical Gown

Description

Scrub Suits

Usage

SUBMED Scrub Suits are used by health professionals during daily routine working in routine procedures.

Transport

Scrub Suits are transported in a carton boxes. Basic warnings and information is printed on cartons with manufacturer information and contact details. CE marking and name of set can be seen on carton boxes.

Reference No	Carton Dimensions (W x D x H – mm)	Number of Sets / Carton
NSS-001-2 NSS-001-3 NSS-001-4 NSS-001-5	600 x 400 x 500 mm	75

Note: The Number of Sets / Carton is estimated and may be changed during production.

Packing

Scrub Suits are packed in PE bags. Packages show the information below if requested:

- Product series name & product name
- Product type (dimensions and type of materials)
- Set contents with quantities
- Manufacturing date
- Date of expiry
- Lot number
- Reference number
- Warnings (don't use open packages, for single use only, keep dry, keep away from sunlight)
- Manufacturer contact & company information
- CE mark

Shelf Life

Scrub Suits have been tested for stability. Test reports show that Scrub Suits have shelf life of 5 years.

Quality Certification & Compliance

All process across SUBMED is run in compliance with EN ISO 9001:2015 & EN ISO 13485:2016.

All products are manufactured in accordance with the below listed standards and norms. Independent third party laboratories tested **Scrub Suits** series for packing sealing strength is in compliance with EN ISO 868-5, stability according to ASTM F 1980 and package leak tests according to ASTM F 1929

Our manufacturing plant and clean room is in compliance and been tested for EN ISO 11605, EN ISO 14644-1, EN ISO 14644-2, EN ISO 14698-1 and EN ISO 14698-2 tests for bio contamination levels in order to assure relevant safety levels in all products.

SUBMED Scrub Suits series are tested for bio-burden according to EN ISO 11737-1.

Scrub Suits are CE Class I nonsterile products according to 93/42/EEC Medical Device Directive.

Content

Description	Qty.
T-Shirt	1
Pants	1

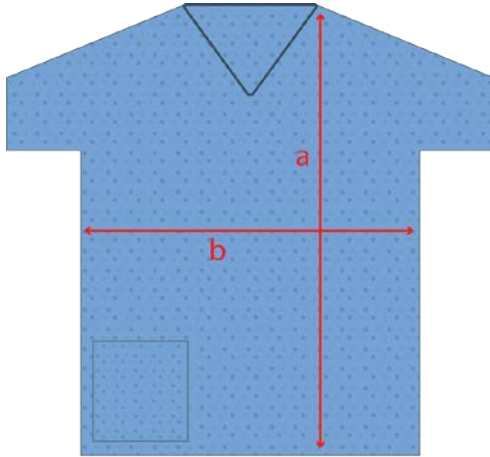
Materials of Selection

Scrub Suits can be made of:

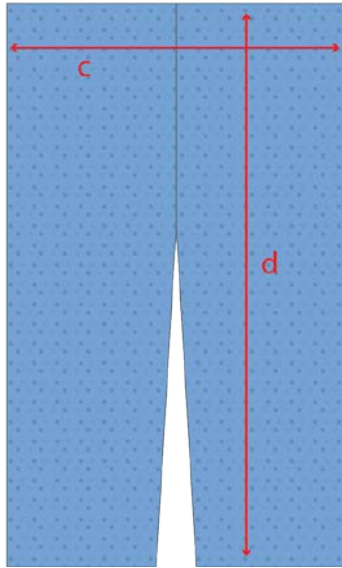
- SMS Fabric (100 % Polypropylene, 3 layers, 43 gr/m2)

All T-Shirt have V neck section. Scrub Suits can be selected with optional pocket. All pants have long legging.

Technical Drawings



Reference Number	Size	a	b
NSS-001-2	M	80 cm	60 cm
NSS-001-3	L	83 cm	63 cm
NSS-01-4	XL	86 cm	66 cm
NSS-001-5	XXL	86 cm	69 cm
The dimensions can be ± 5			



Reference Number	Size	c	d
NSS-001-2	M	60 cm	100 cm
NSS-001-3	L	63 cm	103 cm
NSS-01-4	XL	66 cm	106 cm
NSS-001-5	XXL	69 cm	109 cm
The dimensions can be ± 5			

It is possible to have different dimensions for certain quantities. Please request information from your Agent / Sales Representative.

Storage

Store the product under normal conditions for healthcare material, in a cool and dry place protected from light

Comments

The product must be used by specialised personnel only. Check the package's integrity before use. Do not use if the package is open or damaged.

This document is intended for the use of partners of SUBMED Inc. (Su Biyomedikal Sistemler ve Sağlık Hizmetleri San. Ve Tic. Ltd. Sti.)

*Reproduction in whole or in part by any other party is prohibited.
SUBMED specifications are given for reference only and are subject to change without any previous notice.
Accessory/Product images are for illustrative purposes only.*

Rev.00-2015 © 2015, SUBMED Inc. All rights reserved.