

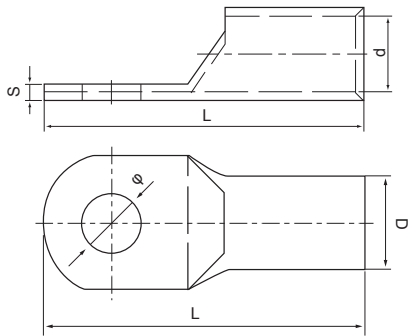
CABLE LUG

Application

These products are suitable for the connection of copper conductors (section 1.5mm²-1000mm²) in power cable with electronic equipment they are made of copper tube T2 and coated with tin. working temperature -55°C -150°C .



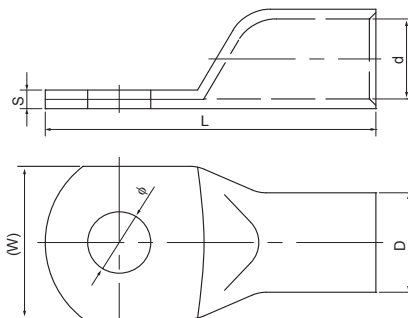
SCA(JGK)



Item No.	φ	D	d	L	S
SCA(JGK)-1.5	4.2,5.2	3.6	2.5	18	1
SCA(JGK)-2.5	4.2,5.2	4	3	19	1
SCA(JGK)-4	5.2,6.4	4.8	3.5	20	1.2
SCA(JGK)-6	5.2,6.4	5.5	4.1	23	1.4
SCA(JGK)-10	6.4,8.5,10.5	6.0	5.1	25,27	1.6,1.4,1.2
SCA(JGK)-16	6.4,8.5,10.5,12.5	7.0	5.7	29.5,31.5,33	1.8,1.6,1.3,1
SCA(JGK)-25	6.4,8.5,10.5,12.5	9	7.2	32,33,34.5	1.8,1.6,1.4
SCA(JGK)-35	6.4,8.5,10.5,12.5	10.5	8.5	37,38.5	2,1.8
SCA(JGK)-50	8.5,10.5,12.5,14.5	12.5	10.1	45	2.4
SCA(JGK)-70	8.5,10.5,12.5,14.5	14.5	11.7	49	2.5
SCA(JGK)-95	8.5,10.5,12.5,14.5	17	13.8	54	3.2
SCA(JGK)-120	10.5,12.5,14.5,16.5	19.5	15.7	62	3.8
SCA(JGK)-150	12.5,16.5	20.5	16.7	68	3.8
SCA(JGK)-185	16.5	23.5	19.1	76	4.4
SCA(JGK)-240	16.5	26	21.4	90	4.6
SCA(JGK)-300	16.5	30	24.6	100	5.4
SCA(JGK)-400	16.5	34	27.4	110	6.6
SCA(JGK)-500	20.5	38	30.8	120	7.2
SCA(JGK)-630	20.5	45	35.6	135	9.2
SCA(JGK)-800	22.5	50	40.4	170	9.6
SCA(JGK)-1000	22.5	55	45	200	10



SC(JGA)



Item No.	φ	D	d	L	(W)	S
SC(JGA)-1.5	φ 4.2, φ 5.2	3.5	2.5	18	7	1
SC(JGA)-2.5	φ 4.2, φ 5.2	4	3	19	8	1
SC(JGA)-4	φ 5.2, φ 6.4	4.8	3.5	20	8	1.2
SC(JGA)-6	φ 5.2, φ 6.4	5.5	4.1	23	9	1.4
SC(JGA)-10	φ 6.4, φ 8.4	6.7	5	25.5	11	1.6
SC(JGA)-16	φ 6.4, φ 8.4	7.5	5.8	30	12	1.8
SC(JGA)-25	φ 6.4, φ 8.4, φ 10.5	9	7.2	32.5	13	1.8
SC(JGA)-35	φ 6.4, φ 8.4, φ 10.5	10.5	8.5	37	15	2
SC(JGA)-50	φ 8.4, φ 10.5	12.5	10.1	45	18	2.4
SC(JGA)-70	φ 10.5, φ 12.5	14.5	11.7	49	21	2.8
SC(JGA)-95	φ 10.5, φ 12.5	17	13.8	54	25	3.2
SC(JGA)-120	φ 12.5, φ 16.5	19.5	15.9	62	28	3.6
SC(JGA)-150	φ 12.5, φ 16.5	20.5	16.7	68	30	3.8
SC(JGA)-185	φ 16.5	23.5	19.1	76	34	4.4
SC(JGA)-240	φ 16.5	26	21.4	90	38	4.6
SC(JGA)-300	φ 16.5, φ 20.5	30	24.6	100	44	5.4
SC(JGA)-400	φ 16.5, φ 20.5	34	27.4	110	50	6.6
SC(JGA)-500	φ 16.5, φ 20.5	38	30.8	120	55	7.2
SC(JGA)-630	φ 20.5	45	35.6	135	65	9.2
SC(JGA)-800	φ 22.5	50	40.4	170	72	9.6
SC(JGA)-1000	φ 22.5	55	45	200	80	10

CABLE LUG

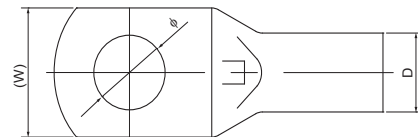
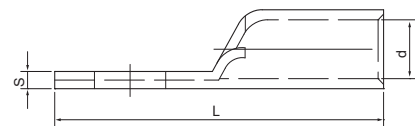
Application

These products are suitable for the connection of copper conductors (section 1.5mm²-1000mm²) in power cable with electronic equipment they are made of copper tube T2 and coated with tin. working temperature -55°C -150°C .

Item No.	φ	D	d	L	(W)	S
SC(JGY)-1.5	φ 4.2, φ 5.2	3.5	2.5	18	7	1
SC(JGY)-2.5	φ 4.2, φ 5.2	4	3	19	8	1
SC(JGY)-4	φ 5.2, φ 6.4	4.8	3.5	20	8	1.2
SC(JGY)-6	φ 5.2, φ 6.4	5.5	4.1	24	9	1.4
SC(JGY)-10	φ 6.4, φ 8.4	6.7	5	25.5	11	1.6
SC(JGY)-16	φ 6.4, φ 8.4	7.5	5.8	31.5	12	1.8
SC(JGY)-25	φ 6.4, φ 8.4, φ 10.5	9	7.2	34	13	1.8
SC(JGY)-35	φ 6.4, φ 8.4, φ 10.5	10.5	8.5	38	15	2
SC(JGY)-50	φ 8.4, φ 10.5	12.5	10.1	45	18	2.4
SC(JGY)-70	φ 10.5, φ 12.5	14.5	11.7	50	21	2.8
SC(JGY)-95	φ 10.5, φ 12.5	17	13.8	56	25	3.2
SC(JGY)-120	φ 12.5, φ 16.5	19.5	15.9	63	28	3.6
SC(JGY)-150	φ 12.5, φ 16.5	20.5	16.7	71	30	3.8
SC(JGY)-185	φ 16.5	23.5	19.1	78.5	34	4.4
SC(JGY)-240	φ 16.5	26	21.4	92.5	38	4.6
SC(JGY)-300	φ 16.5, φ 20.5	30	24.6	102	44	5.4
SC(JGY)-400	φ 16.5, φ 20.5	34	27.4	113	50	6.6
SC(JGY)-500	φ 16.5, φ 20.5	38	30.8	122.5	55	7.2
SC(JGY)-630	φ 20.5	45	35.6	135	65	9.2



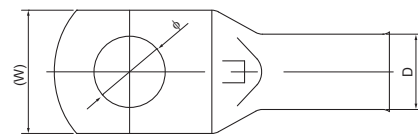
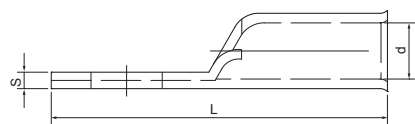
SC(JGY)



Item No.	φ	D	d	L	(W)	S
SC(JGB)-1.5	φ 4.2, φ 5.2	3.5	2.5	19	7	1
SC(JGB)-2.5	φ 4.2, φ 5.2	4	3	20	8	1
SC(JGB)-4	φ 5.2, φ 6.4	4.8	3.5	22	8	1.2
SC(JGB)-6	φ 5.2, φ 6.4	5.5	4.1	24.5	9	1.4
SC(JGB)-10	φ 6.4, φ 8.4	6.7	5	26	11	1.6
SC(JGB)-16	φ 6.4, φ 8.4	7.5	5.8	32	12	1.8
SC(JGB)-25	φ 6.4, φ 8.4, φ 10.5	9	7.2	34.5	13	1.8
SC(JGB)-35	φ 6.4, φ 8.4, φ 10.5	10.5	8.5	38	15	2
SC(JGB)-50	φ 8.4, φ 10.5	12.5	10.1	47	18	2.4
SC(JGB)-70	φ 10.5, φ 12.5	14.5	11.7	52	21	2.8
SC(JGB)-95	φ 10.5, φ 12.5	17	13.8	57	25	3.2
SC(JGB)-120	φ 12.5, φ 16.5	19.5	15.9	63	28	3.6
SC(JGB)-150	φ 12.5, φ 16.5	20.5	16.7	71	30	3.8
SC(JGB)-185	φ 16.5	23.5	19.1	78.5	34	4.4
SC(JGB)-240	φ 16.5	26	21.4	92.5	38	4.6
SC(JGB)-300	φ 16.5, φ 20.5	30	24.6	102	44	5.4
SC(JGB)-400	φ 16.5, φ 20.5	34	27.4	113	50	6.6
SC(JGB)-500	φ 16.5, φ 20.5	38	30.8	122.5	55	7.2
SC(JGB)-630	φ 20.5	45	35.6	135	65	9.2



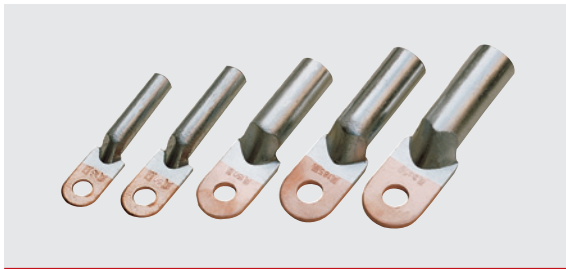
SC(JGB)



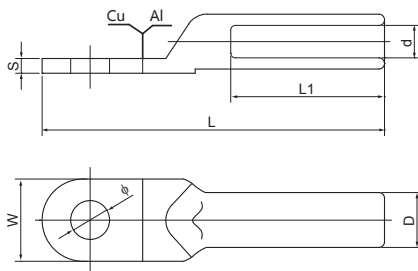
BIMETAL LUG

Application

DTL series of copper-aluminum wiring terminals are suitable for transition connection of the circular aluminium wires, hemicycle-sector aluminium wires, power supply cables in the distribution equipment and copper terminals of the electrical equipment. The material of aluminium and copper is that of L3 and T2 respectively. The technology of friction welding is wonderfully adopted. Therefore they have distinguishing features of strong weld intensity, good nature in electrification, resistant galvanic corrosion and long service life.



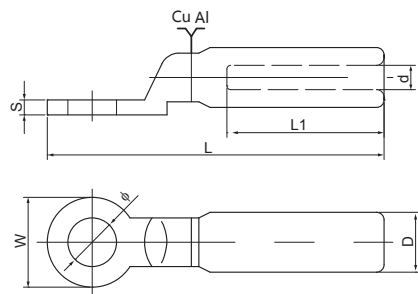
DTL-1



Item No.	ϕ	D	d	L	L1	W	S
DTL-1-10	8.5	10	5.2	65	30	16	2.5
DTL-1-16	8.5	11	6.1	70	31	16	2.6
DTL-1-25	8.5	12	7.1	75	34	18	3.2
DTL-1-35	10.5	14	8.5	85	39	20.5	3.6
DTL-1-50	10.5	16	9.8	90	41	23	4.0
DTL-1-70	12.5	18	11.5	102	47	26	4.6
DTL-1-95	12.5	21	13.5	112	50	28	4.8
DTL-1-120	14.5	23	15	120	53	30	5.3
DTL-1-150	14.5	25	17	126	55	34	5.8
DTL-1-185	16.5	27	18.6	133	57	37	6.5
DTL-1-240	16.5	30	21.5	140	60	40	7.0
DTL-1-300	21	34	24	158	66	50	8.0
DTL-1-400	21	38	27	178	76	55	9.0
DTL-1-500	21	45	30	200	85	60	10.0
DTL-1-630	-	50	34.2	225	85	80	12.0



DTL-2



Item No.	ϕ	D	d	L	L1	W	S
DTL-2-10	10.5	12	5.2	80	38	20	3.5
DTL-2-16	10.5	12	6.1	80	38	20	3.5
DTL-2-25	13	16	7.1	90	42	24	4.0
DTL-2-35	13	16	8.5	90	42	24	4.0
DTL-2-50	13	20	9.8	95	43	24	5.0
DTL-2-70	13	20	11.5	95	43	24	5.0
DTL-2-95	13	20	13.5	95	43	24	5.0
DTL-2-120	13	25	15	120	60	30	5.5
DTL-2-150	13	25	17	120	60	30	5.5
DTL-2-185	13	32	18.6	128	62	35	6.5
DTL-2-240	13	32	21.5	128	62	35	6.5
DTL-2-300	13	34	24	140	65	36	7.0

COPPER, ALUMINIUM CABLE LUG

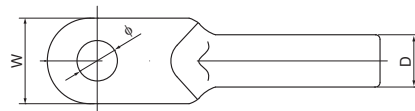
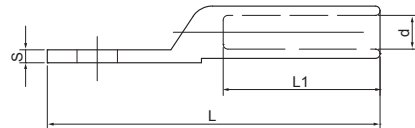
Application

Connecting terminals are suitable for the conjunction of wires, cables in the distribution equipment and the electrical equipment. DL series of aluminum connecting terminals are pressed with aluminium bar (L3), DT series of copper connecting terminals with copper bar (T2).

Item No.	ϕ	D	d	L	L1	W	S
DT-10	8.5	9	5.2	62	26	16	2.5
DT-16	8.5	10	6.1	68	30	16	2.5
DT-25	8.5	11	7.1	70	33	18	2.7
DT-35	10.5	12	8.5	80	36	20.5	3.0
DT-50	10.5	14	9.8	86	38	23	3.4
DT-70	12.5	16	11.5	95	43	26	3.8
DT-95	12.5	18	13.5	104	46	28	4.2
DT-120	14.5	20	15	112	49	30	4.7
DT-150	14.5	22	17	120	51	34	5.5
DT-185	16.5	25	18.6	126	55	37	5.8
DT-240	16.5	27	21.5	137	60	40	6.5
DT-300	21	31	24	158	68	50	8.0
DT-400	21	34	27	176	78	50	9.0
DT-500	21	38	30	186	82	60	10.0
DT-630	21	45	34.2	215	86	80	12.0



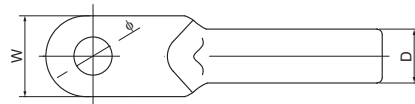
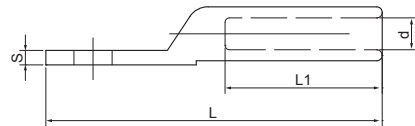
DT



Item No.	ϕ	D	d	L	L1	W	S
DL-10	8.5	10	5.2	65	30	16	2.5
DL-16	8.5	11	6.1	70	31	16	3.0
DL-25	8.5	12	7.1	75	35	18	3.2
DL-35	10.5	14	8.5	85	38	20.5	3.6
DL-50	10.5	16	9.8	90	42	23	4.0
DL-70	12.5	18	11.5	102	47	26	4.5
DL-95	12.5	21	13.5	112	51	28	5.0
DL-120	14.5	23	15	120	53	30	5.5
DL-150	14.5	25	17	126	56	34	6.0
DL-185	16.5	27	18.6	133	58	37	6.5
DL-240	16.5	30	21.5	140	60	40	7.0
DL-300	21	34	24	165	66	50	9.0
DL-400	21	38	27	178	76	55	10.0
DL-500	21	45	30	200	85	60	11.0
DL-630	21	50	34.2	225	85	80	12.0



DL



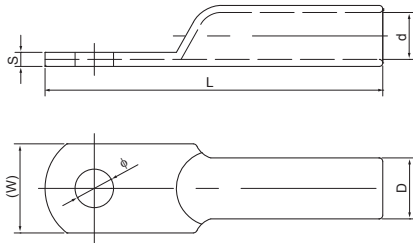
COPPER CABLE LUG

Application

These products are applicable to the connection of wires in distribution equipment power supply cable with electronic apparatus, it is made of (T2) copper tube by die cast and coated tin.



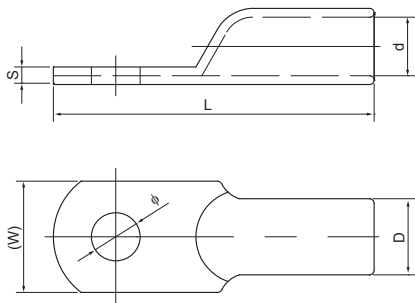
DTG



Item No.	ϕ	D	d	L	W	S
DTG-1.5	4.2	3.5	2.5	25	7	1
DTG-2.5	4.2	4	3	29	8	1
DTG-4	5.2	5	3.4	34	8.5	1.6
DTG-6	5.2	6	4.4	39	9	1.6
DTG-10	6.4	8	5	51	11	3
DTG-16	6.4	9	6	56	13	3
DTG-25	8.4	10	7	61	14	3
DTG-35	8.4	11	8.4	66	16	2.6
DTG-50	8.4	13	10	71	19	3
DTG-70	10.5	16	12	81	23	4
DTG-95	10.5	18	14	85	26	4
DTG-120	12.5	19	15	96	28	4
DTG-150	12.5	22	17	102	32	5
DTG-185	14.5	24	19	114	35	5
DTG-240	16.5	26	21	118	38	5
DTG-300	16.5	31	24	133	45	7
DTG-400	16.5	34	26	147	49	8
DTG-500	21	38	30	172	55	8
DTG-630	21	45	35	210	65	10
DTG-800	23	50	40	270	73	10
DTG-1000	23	55	45	300	80	10



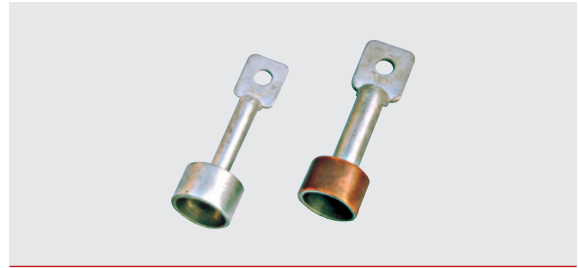
JG



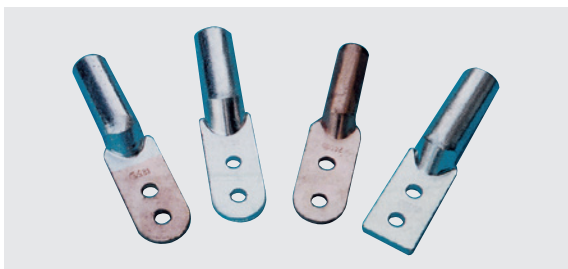
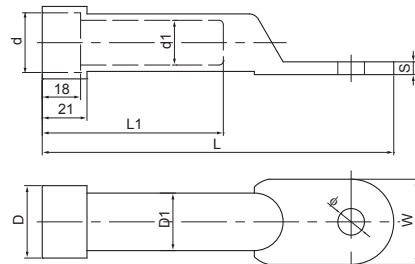
Item No.	ϕ	D	d	L	(W)	S
JG-10	6.4	8	5	37	11	3
JG -16	6.4	9	6	40	13	3
JG -25	8.4	10	7	45	14	3
JG -35	8.4	11	8.4	51	16	2.6
JG -50	8.4	13	10	54	19	3
JG -70	10.5	16	12	60	23	4
JG -95	10.5	18	14	65	26	4
JG -120	12.5	19	15	72	28	4
JG -150	12.5	22	17	77	32	5
JG -185	14.5	24	19	86	35	5
JG -240	16.5	26	21	93	38	5
JG -300	16.5	31	24	101	45	7
JG -400	16.5	34	26	113	49	8
JG -500	21	38	30	124	55	8
JG -630	21	45	35	135	65	10

WATER-PROOF COPPER LUG

Item No.	ϕ	D	d	D1	d1	L1	L	W	S
DTF-35	8.5	34	28	12	9	64	105	16	3
DTF-50	10.5	34	28	14	10	68	110	20.5	3
DTF-70	10.5	34	28	16	12	70	120	23	4
DTF-95	12.5	34	28	18	13	73	125	28	4
DTF-120	12.5	34	28	21	15	75	135	30	5
DTF-150	12.5	34	28	23	16	78	145	33	5
DTF-185	12.5	34	28	25	18	82	155	37	6
DTF-240	12.5	34	28	27	20	85	165	40	6
DTF-300	16.5	41	33	31	22	90	185	46	7
DTF-400	16.5	41	33	34	25	95	190	50	8
DTF-500	16.5	41	33	38	28	95	200	60	8



DTF



Double hole terminal



Water-proof copper terminal

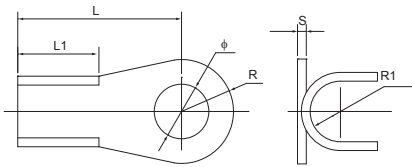
COPPER OPEN CONNECTING NOSE

Application

Suitable for the connection of copper conductors in distribution equipment.



OT



Item No.	ϕ	L	L1	S	R	R1
OT-3A	4.2	11.5	5	0.5	3.5	1.3
OT-5A	5.2	12.5	5.4	0.6	4.2	1.75
OT-10A	5.2	15	6	0.8	4.7	2
OT-20A	6.2	17	7.4	1	5.5	2.5
OT-30A	6.2	18	8.2	1.1	5.8	3.2
OT-40A	6.2	20	9	1.1	6.1	3.5
OT-50A	6.2	21.5	9	1.2	6.3	3.7
OT-60A	8.2	23	10.5	1.3	7.2	4
OT-80A	8.2	25.5	11	1.4	8	4.5
OT-100A	8.2	29	12	1.5	8.5	5
OT-150A	10.4	31	12.4	1.6	9	5.5
OT-200A	10.4	33	14	1.7	10	6
OT-250A	10.4	36	15.5	1.8	10.5	6.5
OT-300A	12.4	40	17	2	11.5	7
OT-400A	14.4	43	18	2.2	13	8
OT-500A	14.4	46	20	2.4	14.5	8.5
OT-600A	16.5	50.5	23	2.7	16	10.5
OT-800A	18.5	60	30	3.2	17.5	12.5
OT-1000A	18.5	66	33	3.6	20.5	15.5

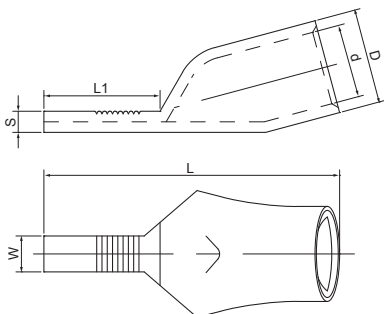
C45 PLUG-IN NEEDLE

Application

Suitable for the connection of the wires in contribution equipment and power supply cables with electronic apparatus, adopting T2 copper tube pressing. Imported C45 plug-in needle, adopted T2 Copper tube, and coated tin.



C45



Item No.	D	d	L1	L	W	S
C45-4	5	3	10	26	4.8	2
C45-6	6	4	10	27	4.8	2
C45-10	7.5	5	13.5	34	6.8	2.5
C45-16	8.5	6	14	35	6.8	2.5
C45-25	10	7	14.5	38	6.8	3
C45-35	11	8.4	15	42	6.8	2.6
C45-50	13	10	15.5	45	6.8	3
C45-70	16	12	16	50	6.8	4
C45-95	18	14	18	55	6.8	4

CABLE CONNECTOR

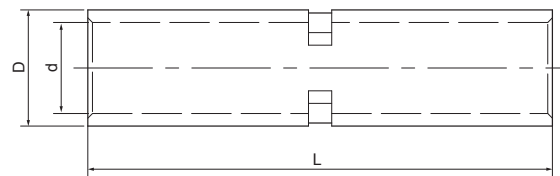
Application

These products are applicable for the connection of the circular wire, hemicycle wire with power supply cable in distribution equipment . They are made of higher 99.9 percent pure T2 copper tube, and coated tin.

Item No.	D	d	L
GTY-1-1.5	3.5	2.5	20
GTY -1-2.5	4	3	20
GTY -1-4	4.8	3.5	20
GTY -1-6	5.5	4.1	25
GTY -1-10	6.7	5	30
GTY -1-16	7.5	5.8	35
GTY -1-25	9	7.2	40
GTY -1-35	10.5	8.5	45
GTY -1-50	12.5	10.1	50
GTY -1-70	14.5	11.7	55
GTY -1-95	17	13.8	60
GTY -1-120	19.5	15.9	65
GTY -1-150	20.5	16.7	70
GTY -1-185	23.5	19.1	75
GTY -1-240	26	21.4	80
GTY -1-300	30	24.6	85
GTY -1-400	34	27.4	90
GTY -1-500	38	30.8	100
GTY -1-630	45	35.8	110
GTY -1-800	50	40.4	150
GTY -1-1000	55	45	170



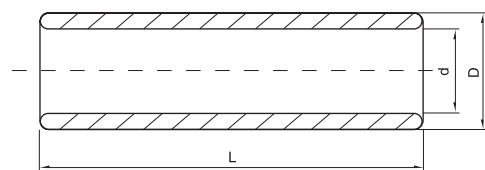
GTY-1



Item No.	D	d	L
GTY-2-1.5	3.5	2.5	20
GTY-2-2.5	4	3	20
GTY-2-4	4.8	3.5	20
GTY-2-5.5	5.5	4.1	25
GTY-2-10	6.7	5	30
GTY-2-16	7.5	5.8	35
GTY-2-25	9	7.2	40
GTY-2-35	10.5	8.5	45
GTY-2-50	12.5	10.1	50
GTY-2-70	14.5	11.7	55
GTY-2-95	17	13.8	60
GTY-2-120	19.5	15.9	65
GTY-2-150	20.5	16.7	70
GTY-2-185	23.5	19.1	75
GTY-2-240	26	21.4	80
GTY-2-300	30	24.6	85
GTY-2-400	34	27.4	90
GTY-2-500	38	30.8	100
GTY-2-630	45	35.8	110
GTY-2-800	50	40.4	150
GTY-2-1000	55	45	170



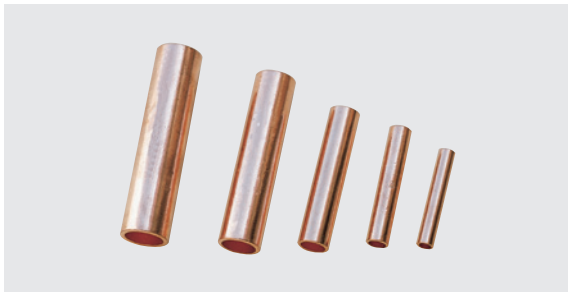
GTY-2



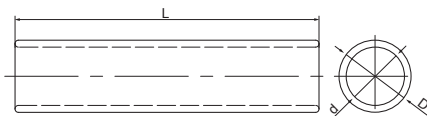
CONNECTING TUBES (PASSING THROUGH)

Application

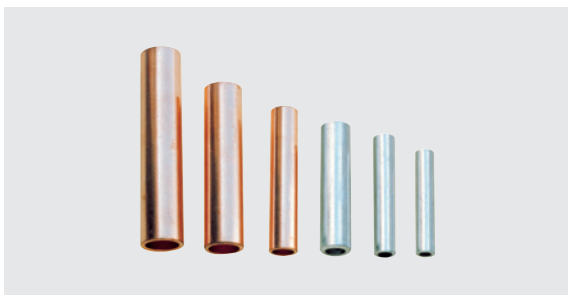
These products are applicable to connect the circular wire and hemicycle-sector wire in distribution equipment or power supply cables. GT series connecting tube is made of copper tube. GTL series hole-passing connecting tube is made of friction-welding craft, both top quality.



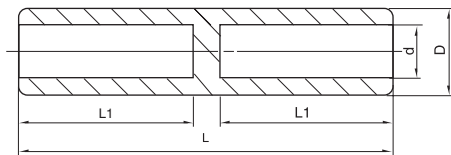
GT-1



Item No.	D	d	L
GT-1-1.5	3.5	2.5	28
GT-1-2.5	4	3	30
GT-1-4	5	3.4	35
GT-1-6	6	4.4	40
GT-1-10	8	5	52
GT-1-16	9	6	56
GT-1-25	10	7	60
GT-1-35	11	8.4	65
GT-1-50	13	10	73
GT-1-70	16	12	80
GT-1-95	18	14	85
GT-1-120	19	15	93
GT-1-150	22	17	100
GT-1-185	24	19	105
GT-1-240	26	21	110
GT-1-300	31	24	120
GT-1-400	34	26	135
GT-1-500	38	30	150
GT-1-630	45	35	170
GT-1-800	50	40	225
GT-1-1000	55	45	250



GT-2



Item No.	D	d	L	L1
GT-2-16	10	6.1	65	30
GT-2-25	11	7.1	70	32
GT-2-35	12	8.5	75	34
GT-2-50	14	9.8	80	36
GT-2-70	16	11.5	90	42
GT-2-95	18	13.5	95	44
GT-2-120	20	15	100	47
GT-2-150	22	17	105	49
GT-2-185	25	18.6	110	50
GT-2-240	27	21.5	120	55
GT-2-300	31	24	130	60
GT-2-400	34	27	140	65

CONNECTING TUBES (OIL SEAL)

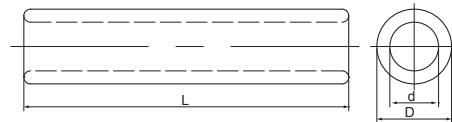
Application

These products are applicable to connect the circular wire and hemicycle-sector wire in distribution equipment or power supply cables. GL series connecting tube is made of copper tube.

Item No.	D	d	L
GL-1-10	9	5	60
GL-1-16	10	6	65
GL-1-25	12	7	70
GL-1-35	14	9	75
GL-1-50	16	10	80
GL-1-70	18	12	90
GL-1-95	21	14	95
GL-1-120	23	15	100
GL-1-150	25	17	105
GL-1-185	27	19	110
GL-1-240	30	21	120
GL-1-300	34	24	130
GL-1-400	37	27	150
GL-1-500	40	29	170
GL-1-630	48	36	185



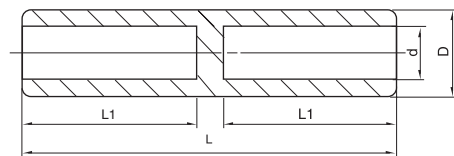
GL-1



Item No.	D	d	L1	L
GL-2-16	11	6.1	30	70
GL-2-25	12	7.1	32	75
GL-2-35	14	8.5	37	85
GL-2-50	16	9.8	43	95
GL-2-70	18	11.5	47	105
GL-2-95	21	13.5	50	110
GL-2-120	23	15	53	115
GL-2-150	25	16.5	55	120
GL-2-185	27	18.6	57	125
GL-2-240	30	21.5	60	130
GL-2-300	34	24	65	140
GL-2-400	38	27	70	160



GL-2



BIMETAL CONNECTORS (OIL SEAL)

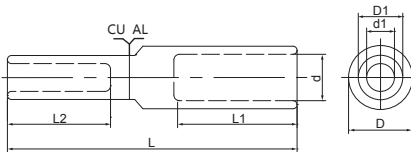
Application

These products are applicable to connect the circular wire and hemicycle-sector wire in distribution equipment or power supply cables. GTL series hole-passing connecting tube is made of friction-welding craft, top quality.



GTL

Item No.	D	d	D1	d1	L1	L2	L
GTL-16	11	6.1	9	5.2	30	25	70
GTL-25	12	7.1	10	6.1	33	27	75
GTL-35	14	8.5	11	7.1	40	30	85
GTL-50	16	9.8	13	8.5	42	32	95
GTL-70	18	11.5	15	9.8	46	38	105
GTL-95	21	13.5	17	11.5	50	40	110
GTL-120	23	15	19	13.5	55	42	112
GTL-150	25	17	21	15	55	44	118
GTL-185	27	18.6	23	17	58	46	125
GTL-240	30	21.5	26	18.6	60	54	130
GTL-300	34	24	28	21.5	66	56	145
GTL-400	38	27	30	24	70	60	155
GTL-500	45	30	34	27	75	65	165



CCA IMPORTED C SHAPE COPPER WIRE CLAMPS

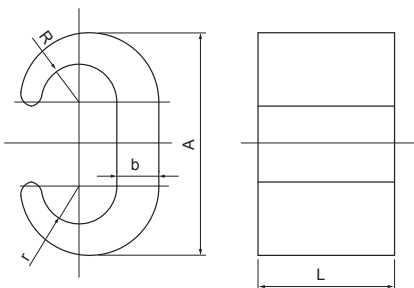
Application

It is suitable for the connection of copper splicing wire, made of C-shaped copper material.



CCA

Item No.	Wire(mm)	A	L	b	R	r
CCA-1	16~16	22	12	25	3	3
CCA-2	16~25 16~35	20	22	3	4	3
CCA-3	25~25 25~35 35~35	24.7	22	4	4	3.5
CCA-4	16~50 25~50 35~50	27.8	23	6	5	4
CCA-5	16~70 25~70 35~70	26.7	24	4	5.5	4
CCA-6	25~95 35~95	31	25	5	6.5	4
CCA-7	50~50 50~70	34	24	8	5.5	5
CCA-8	70~70	34	25	7	5.5	5.5
CCA-9	70~95 95~95	37.4	29.5	9	6.5	6.5
CCA-10	70~150 95~150 70~185 95~185	46	30.5	7.5	9	6.5
CCA-11	95~20 120~120	42.6	29	7	7.5	7.5
CCA-12	150~150 185~185	54	32.5	9.8	9	9

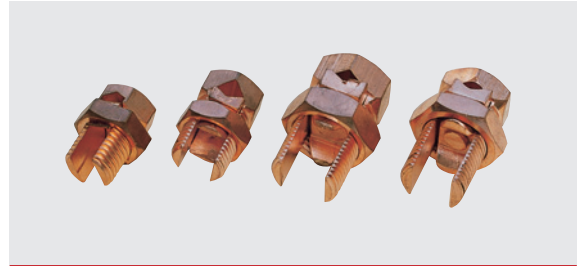
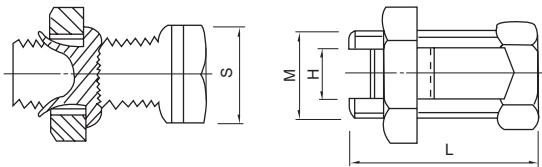


IMPORTED T/J COPPER BOLT CONNECTORS

Application

It is suitable for the sequence and transportation of all kinds of conductor in electric network, made of copper.

Item No.	L	M	H	S
T/J-16	20	M17×2.5	6	18
T/J-25	27	M19×2.5	7	20
T/J-35	35	M21×2.5	7	22
T/J-50-70	42	M23×2.5	11	24
T/J-90-120	45	M25×2.5	14	26
T/J-150-185	60	M29×2.5	17	30
T/J-200-240	72	M31×2.5	20	32



T/J

IMPORTED COPPER CLAMPS

Application

It is suitable for transition connection of the electric appliances of indoors distributing device and kinds of wire cables. It adopts T2 red copper, the surface adopt nickle plating.

Item No.	Conductor(mm ²)	L	L1	L2	A	A1	b	φ
WCJB-1	16~25	39.5	/	13	25	16.5	2.8	8.5
WCJB-2	16~25	45	13	13	22	18	2.8	8.5
WCJB-3	25~35	52.5	13.5	13.5	24.5	21	2.9	10.5
WCJB-4	35~50	57	16	16	27.5	22	3	10.5
WCJB-5	50~70	61	19	19	31	23	3	10.5
WCJB-6	70~95	69	20	20	35	23.5	3.2	10.5
WCJB-7	95~120	74	23.5	23.5	42	28.5	3.3	13.5
WCJB-8	120~150	73.5	25	25	41	27	3.5	13.5
WCJB-9	150~185	76	25.5	25.5	42	28	3.7	13.5
WCJB-10	185~240	80	26	26	44	30	4	13.5



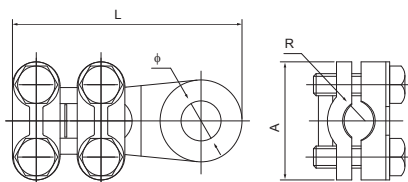
WCJB

IMPORTEED BRASS JOINTING CLAMPS

Application

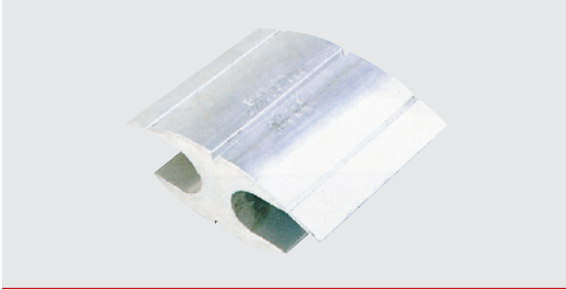
It is suitable for transitional connection of electronic apparatus with wire and cable in indoor distribution equipment, made of brass by die-cast and coated nickle.

Item No.	Conductor(mm ²)	L	A	R	φ
WCJC-1	16	37	21	3	7.5
WCJC-2	25~35	48	22	4	11
WCJC-3	50~70	60	31	5.5	11
WCJC-4	120~150	70	35	8.5	15
WCJC-5	210~250	90	46	10.5	17
WCJC-6	300	115	56	12	21
WCJC-7	400~500	125	62	15	23

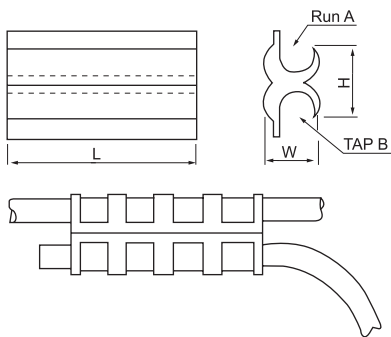


WCJC

ALUMINIUM CONNECTOR (H TYPE)



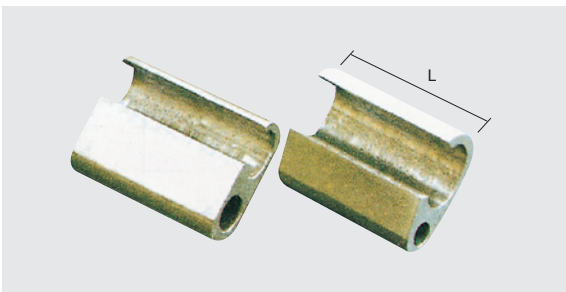
H



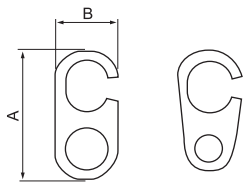
Item No.	Wire dia Range		Wire dia Range		Dimensions (mm)		
	Run "A"		Run "B"		H	L	W
H-1	3/0 ACSR	4/0 ACSR	3/0 ACSR	4/0 ACSR	37.80	63.50	22.60
H-2	3/0 ACSR	4/0 ACSR	#1 ACSR	2/1 ACSR	37.80	63.50	22.60
H-3	#1 ACSR	2/0 ACSR	#1 ACSR	2/0 ACSR	36.06	47.75	22.60
H-4	3/0 Solid	4/0 ACSR	46 Solid	#2 ACSR	37.33	47.75	22.60
H-5	#3 Solid	1/0 ACSR	65 Solid	#2 ACSR	28.44	44.45	17.78
H-6	#6 Solid	#2 ACSR	#6 Solid	#2 ACSR	28.44	44.45	17.78

Item No.	Wire dia Range		Wire dia Range		Dimensions (mm)		
	Run "A"		Run "B"		H	L	W
H-65	556.5 ACSR	795 ACSR	556.5 ACSR	795 ACSR	75.43	117.34	44.19
H-66	556.5 ACSR	795 ACSR	300 ACSR	556.5 ACSR	77.21	117.34	44.19
H-67	556.5 ACSR	795 ACSR	1/0 ACSR	336.4 ACSR	77.47	88.90	44.19
H-68	300 ACSR	556.5 ACSR	300 ACSR	556.5 ACSR	77.47	88.90	44.19
H-69	300 ACSR	556.5 ACSR	1/0 ACSR	336.4 ACSR	77.21	99.90	17.78

ALUMINIUM CONNECTOR (CTO TYPE)



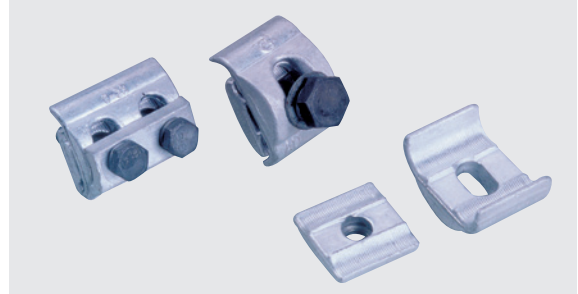
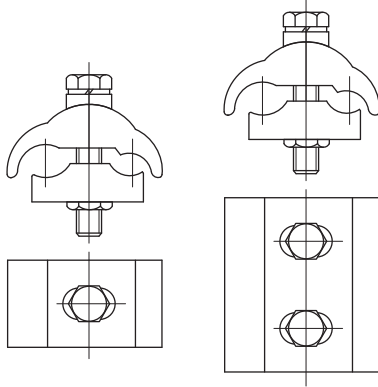
CTO



Item No.	Hole 1 (mm ²)	Hole 2 (mm ²)	Dimensions (mm)		
			A	B	L
CTO 10-16/10-16	16-35	16-35	17.5	23.8	38
CTO 10-35/10-16	16-35	35-70	17.8	26	46
CTO 10-35/16-35	35-70	35-70	20.6	30.5	47
CTO 50-70/10-16	70-120	70-120	22.7	36.5	52
CTO 50-70/16-35	35-150	70-150	23	34.5	70
CTO 50-70/50-70	70-150	70-150	25.4	39.5	70
CTO 70-150/50-70	35-70	120-240	28	42	90
CTO 70-150/70-150	70-150	120-240	32	46	90
CTO 150-240/70-150	120-240	120-240	32	52	90
CTO 150-240/150-240	150-300	150-300	32	52	100

APG ALUMINIUM PG CLAMPS

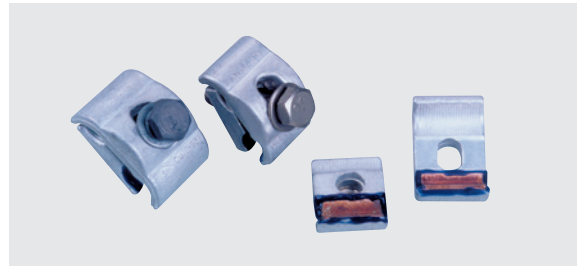
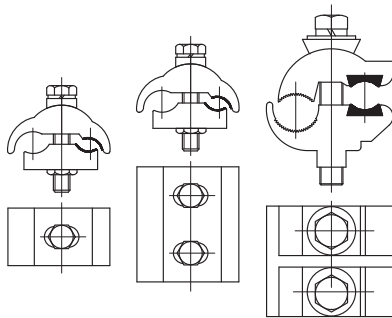
Item No.	Size	Sort
APG-A1	16~70 ²	Single bolt
APG-A2	25~150 ²	Single bolt
APG-B1	16~70 ²	Double bolt
APG-B2	25~150 ²	Double bolt



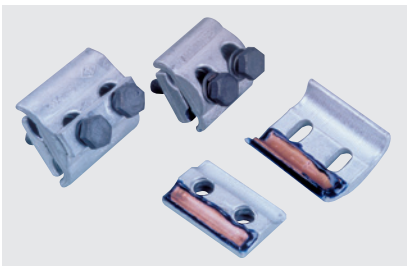
APG-A

CAPG SERIES CLAMPS

Item No.	Size	Sort
CAPG-A1	Cu:6~50 ² Al:16~70 ²	Single bolt
CAPG-A2	Cu:10~95 ² Al:25~150 ²	Single bolt
CAPG-B1	Cu:6~50 ² Al:16~70 ²	Double bolt
CAPG-B2	Cu:10~95 ² Al:25~150 ²	Double bolt
CAPG-C1	Cu:6~120 ² Al:16~120 ²	Double bolt
CAPG-C2	Cu:50~240 ² Al:50~240 ²	Double bolt



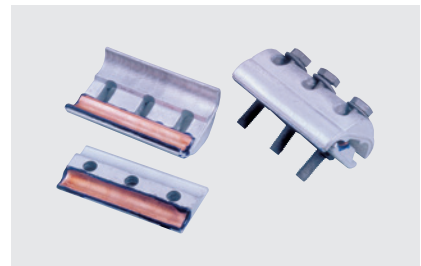
CAPG-A



CAPG-B



CAPG-C



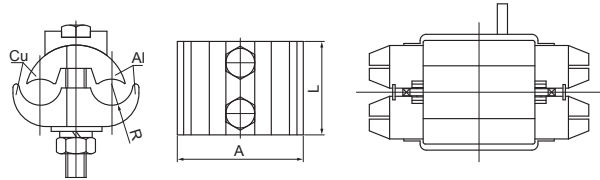
CAPG-D

JBL ALUMINIUM-COPPER PARALLEL GROOVE CONNECTOR



JBL

Item No.	Conductor (mm ²)	L	A	R
JBTL-16-70	16-70	42	42	6
JBTL-16-120	16-120	45	46	7.5
JBTL-50-240	50-240	45	63	10.5

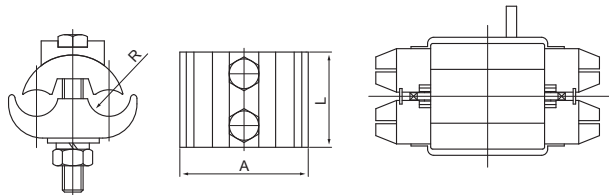


JBT COPPER PARALLEL GROOVE CONNECTOR

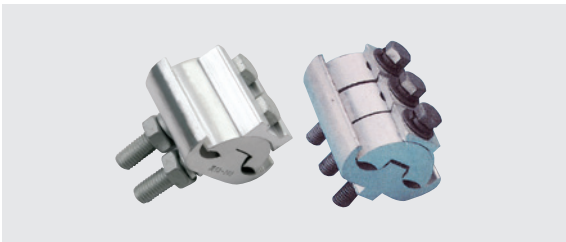


JBT

Item No.	Conductor (mm ²)	L	A	R
JBT-16-120	16-120	45	46	7.5
JBT-50-240	50-240	45	63	10.5

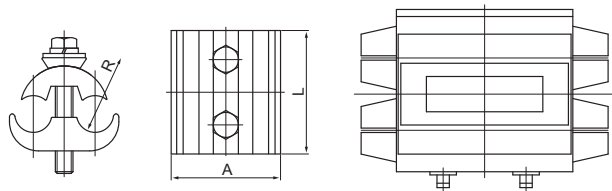


JBL ALUMINIUM PARALLEL GROOVE CONNECTOR



JBL

Item No.	Conductor (mm ²)	L	A	R
JBL-120-300	120-300	70	62	10.5

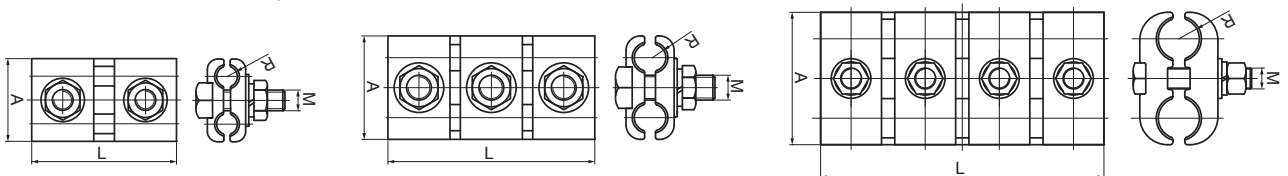


JB SERIES PARALLEL-GROOVE CLAMPS



JB

Item No.	Conductor (mm ²)	L	A	R	M
JB-0	16-25	72	38	3.5	10
JB-1	35-50	80	45	5	12
JB-2	70-95	112	52	7	12
JB-3	120-150	140	62	9	16
JB-4	185-240	142	71	11	16
JB-5	300-400	215	100	15.5	20
JB-6	500-630	230	110	18.5	20

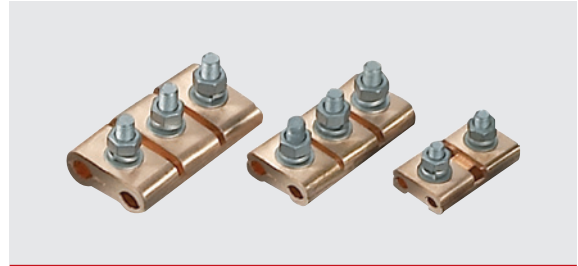
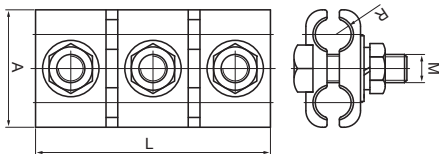
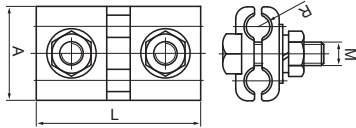


JB JBT JBTL SERIES PARALLEL-GROOVE CLAMPS

Application

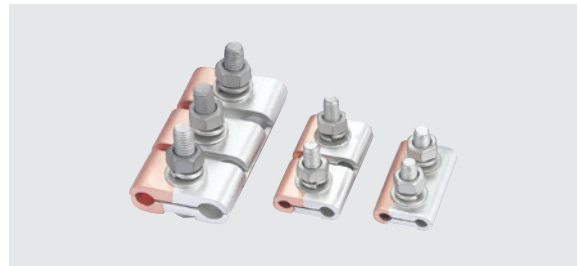
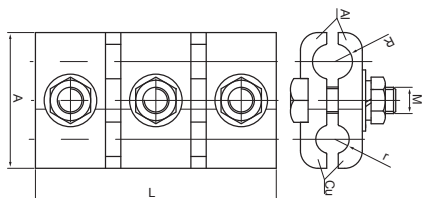
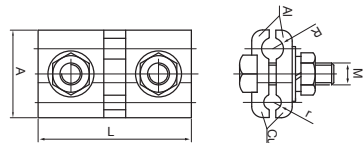
JBT copper combined channel clamp is applicable to branching connection of different-section copper wire suitable section 16-240². JBTL series copper-aluminium transitional combined channel connector is applicable to the transitional connection of copper conductor with aluminium one in power supply wire. adopted flash-welding craft.

Item No.	Conductor	L	A	R	M
JBT-0	16~25	55	35	3.5	10
JBT-1	35~50	70	40	5	10
JBT-2	70~95	100	50	6.5	12
JBT-3	120~150	110	63	8.5	12
JBT-4	185 ~ 240	110	65	10.5	12



JBT

Item No.	For aluminium wire	For copper wire	L	A	R	r	M
JB-TL-0	16~25	16~25	60	35	3.5	3.5	10
JB-TL-10	35~50	16~25	70	40	5	3.5	10
JB-TL-11	35~50	35~50	70	40	5	5	10
JB-TL-21	70~95	35~50	100	50	6.5	5	12
JB-TL-22	70~95	70~95	100	50	6.5	6.5	12
JB-TL-31	120~150	35~50	110	62	8	5	12
JB-TL-32	120~150	70~95	110	62	8	6.5	12
JB-TL-33	120~150	120~150	110	62	8	8	12
JB-TL-41	185~240	35~50	110	65	10.5	5	12
JB-TL-42	185~240	70~95	110	65	10.5	6.5	12
JB-TL-43	185~240	120~150	110	65	10.5	8	12
JB-TL-44	185~240	185~240	110	65	10.5	10.5	12

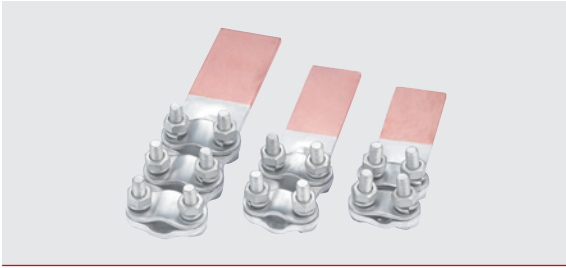


JB-TL

BOLTED TERMINAL CONNECTORS

Application

STL, SLG series terminal connectors are applicable to the conjunction of leading-down wire in the outdoor distribution system and the electrical equipment. The terminal connectors are made by the technology of flash butt-welding and friction welding additional.



STL

Item No.	Diagram	Conductor(mm ²)	L	L1	L2	a
STL-1A/1B	1	35~50	120	65	42	40
STL-2A/2B	1	70~95	135	80	45	40
STL-3A/3B	2	35~50	145	65	65	40
STL-4A/4B	2	70~95	175	80	80	40
STL-5A/5B	2	120~150	225	125	85	50
STL-6A/6B	2	185~240	225	125	85	50
STL-7A/7B	3	120~150	239	125	85	80
STL-8A/8B	3	185~240	239	125	85	80

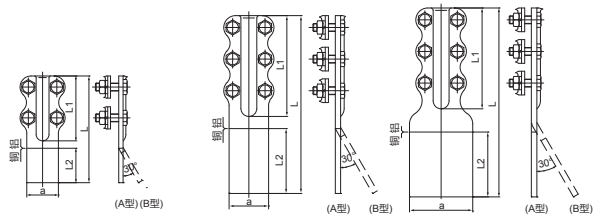


Diagram 1

Diagram 2

Diagram 3



SLG

Item No.	Diagram	Conductor(mm ²)	L	L1	L2	a
SLG-1A/1B	1	35~50	145	65	60	40
SLG-2A/2B	1	70~95	175	80	70	40
SLG-3A/3B	2	120~150	225	125	80	50
SLG-4A/4B	2	185~240	225	125	80	50

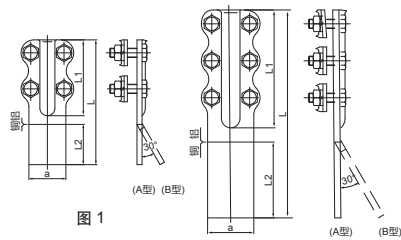


图 1

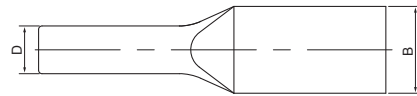
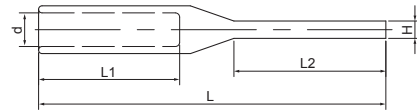
图 2

SY(T) SERIES OF COPPER CONNECTORS

Item No.	D	d	B	H	L	L1	L2
SY(T)-35	14	8.5	23	4	105	40	50
SY(T)-50	16	10	28	4.5	120	45	55
SY(T)-70	18	11.8	30	5	135	60	60
SY(T)-95	20	14	40	5	150	60	70
SY(T)-120	22	15.5	40	5.5	160	65	70
SY(T)-150	25	17	50	6.5	170	70	75
SY(T)-185	27	19	50	7.3	180	75	80
SY(T)-240	30	21	50	8.5	190	80	85
SY(T)-300	32	23	60	9	210	90	90
SY(T)-400	36	26.5	60	9.5	220	90	100
SY(T)-500	40	30	80	10	230	100	100
SY(T)-630	45	35	80	12	235	100	100
SY(T)-800	50	38.5	100	12.5	270	110	120



SY(T)

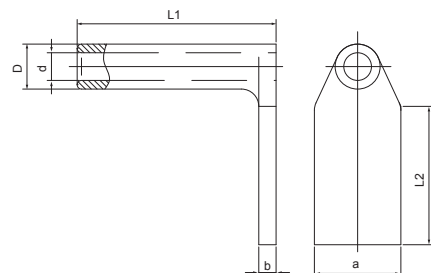


SY SERIES OF ALUMINIUM CONNECTORS

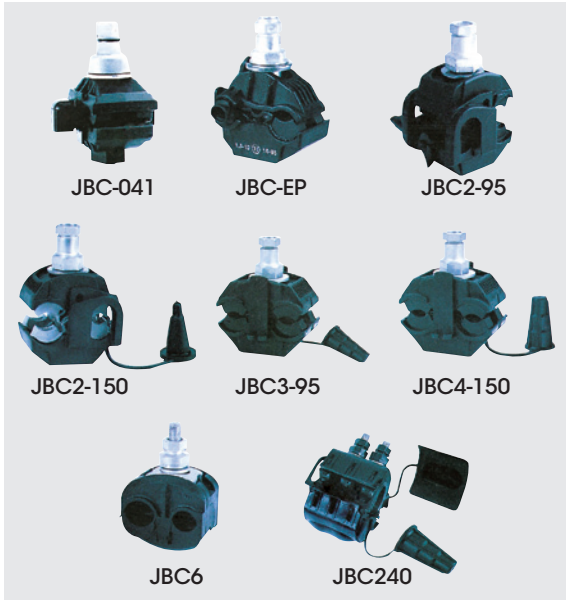
Item No.	L1	L2	D	d	a	b
SY-120/7C	115	80	26	16.0	50	10
SY-120/20C	115	80	26	16.6	50	10
SY-150/8C	125	80	30	17.5	50	10
SY-150/20C	125	80	30	18.0	50	10
SY-185/10C	125	80	32	19.5	50	12
SY-185/25C	125	80	32	20.5	50	12
SY-185/30C	125	80	32	20.5	50	12
SY-210/10C	135	80	34	20.5	50	12
SY-210/25C	135	80	34	21.5	50	12
SY-240/30C	135	80	36	23.0	50	12
SY-240/40C	135	80	36	23.0	50	12
SY-300/15C	145	100	40	24.5	63	16
SY-300/20C	145	100	40	25.0	63	16
SY-300/25C	145	100	40	25.5	63	16
SY-300/40C	145	100	40	25.5	63	16
SY-400/20C	155	100	45	28.5	63	16
SY-400/35C	155	100	45	28.5	63	16
SY-500/35C	165	100	52	31.5	80	16
SY-500/45C	165	100	52	31.5	80	16
SY-630/45C	185	100	60	35.5	100	20
SY-630/55C	185	100	60	36.0	100	20



SY



INSULATION PIERCING CONNECTOR

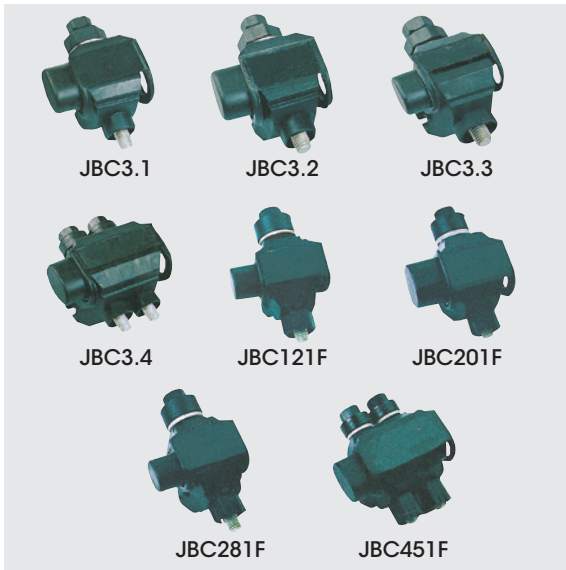


1kV series products

Item No.	Main wire section	Branch wire section	Nominal current	Exterior dimension	Application
JBC-756	0.75~6	0.75~6	41	21x27x23	Structural illumination street lamp connection of client's wire connection of main wire and main wire outdoor trolley wire underground cable structural power supply main cable
JBC-041	6~10	1.5~6	63	26x39x54	
JBC-101	1.5~2.5	1.5~10	55	27x41x62	
JBCP	16~19	1.5~10	63	27x41x62	
JBC2-95	16~95	4~35(50)	138	46x52x87	
JBC2-150	50~150	6~35(50)	138	46x52x87	
JBC3-95	25~95	25~95	207	46x61x100	
JBC4-150	50~150	50~150	239	52x61x100	
JBC6*	25~120	25~120	239	52x68x100	
JBC7	150~240	95~240	425	52x68x100	
JBC-240	95~240	95~240	424	83x130x130	

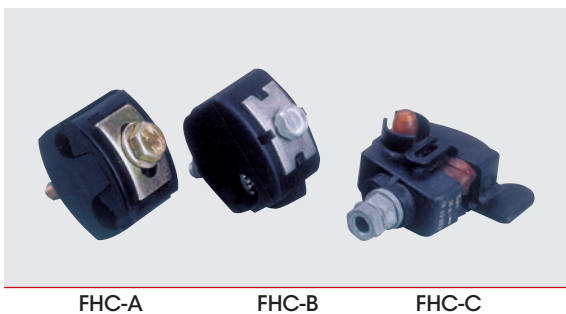
Notes: IPC6* not permit to work under water.

Please contact us for special specification and type

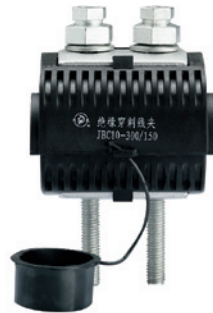


Item No.	Conductor (mm ²)		Bolts
	Main wire	Branch wire	
JBC3.1	95-16	25-10	1
JBC3.2	95-70	95-70	1
JBC3.3	185-120	25-16	1
JBC3.4	185-70	185-70	2
JBC121F	AL-CU	16-50	1
JBC201F	95-70	95-70	1
JBC281F	185-120	25-10	1
JBC451F	185-12	185-70	2

FHC INSULATING CONNECTING CLAMP



JBC INSULATION PIERCING CLAMPS



JBC INSULATION PIERCING CLAMPS

1kV series piercing clamp

Item No.	Main lead	Off set	Bolt
JBC-240/240	95-240	95-240	2
JBC-240/185	95-240	70-185	2
JBC-185/95	70-185	16-95	2
JBC-150/150	35-150	35-150	2
JBC-150/70	50-150	10-70	1
JBC-95/50	25-95	10-50	1
JBC-0	16-95	1.5-10	1
JBC-01	16-95	8-35	1
JBC-1	16-120	16-50	1

10kV series piercing clamp

Item No.	Main lead	Off set	Bolt
JBC10-300/300	95-300	95-300	2
JBC10-300/150	95-300	50-150	2
JBC10-185/50	70-185	16-50	2
JBC10-150/150	50-150	50-150	2
JBC10-95/70	25-95	16-70	2

20kV series piercing clamp

Item No.	Main lead	Off set	Bolt
JBC20-240-240	120-240	120-240	2

1kV series piercing clamp

Item No.	Main lead	Bolt
JBCF-95-240	95-240	2
JBCF-50-185	50-185	2

10kV series piercing clamp

Item No.	Main lead	Bolt
JBCF10-95-300	95-300	2
JBCF10-50-185	50-185	2
JBCF10-25-95	25-95	2