



DISPOSABLE BIOPSY FORCEPS

WHERE TECHNOLOGY AND RELIABILITY MEET

The biopsy forceps are extraordinarily sharp, which guarantees safe and effortless removal of significant tissue specimens. The CamDesign of our TechBite™ requires only very gentle contact pressure for a very good biopsy. The shortened distal end goes easy on the working

channel, even in angled positions. This is always guaranteed by the fully-mechanized production system used to manufacture TechBite™. With its classic shear joints, the TruBite combines easy handling with reliable quality.

SPECIFIC CHARACTERISTICS

- Significant biopsies
- A design that goes easy on the working channel
- Short distal end: 9 mm (TechBite™), 11.5 mm (TruBite)
- Wide product range



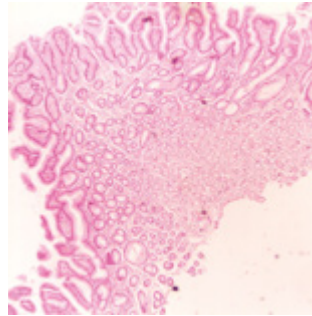
Cam-Design (Fig. TechBite™)



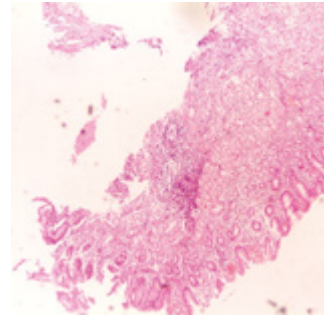
Scissors joint (Fig. TruBite)

CONVINCING IN PRACTICAL USE

All of our forceps are equipped with a polyethylene coating. The labels can be consulted at any time for information regarding the withdrawal of the biopsy forceps.



Biopsate removed with a toothed cutting edge



Biopsate removed with a smooth cutting edge



HANDLE AVAILABLE AS 1-RING VERSION

All forceps are equipped with the 1-ring handle. This allows you to use a one-hand grip method.

JAW SECTIONS FOR EVERY INTERVENTION

Whether for biopsies or for removal of small polyps – the disposable biopsy forceps are perfectly equipped for any task with different jaw sections: with a smooth or a toothed cutting edge, with or without a spike.



HIGH QUALITY COATING

The coating protects the working channel against scratching and provides a frictionless feed motion. The colored marking shows the removal of the forceps from the working channel in order to prevent damage to the mucous membrane. The forceps have been given different colors so they can be quickly allocated in accordance with working length:

Blue: 2300 mm or 2600 mm

Orange: 1800 mm

Yellow: Pediatric 1800 mm or 2600 mm

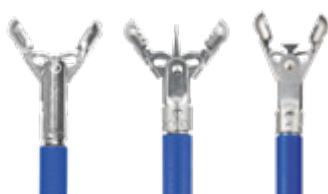
SELECTION OF MORE THAN 30 BIOPSY FORCEPS

The broad range includes forceps of various sizes, and with differing features. An extract from the portfolio can be found below, while page five (5) offers a complete overview.

TECHBITE™



Jaw Ø 2.3 mm,
180 cm length



Jaw Ø 2.3 mm,
230 cm length

TRUBITE



Jaw Ø 2.3 mm,
180 cm length



Jaw Ø 2.3 mm,
230 cm length

SPECIAL FORCEPS

TECHBITE™ PAEDIATRICS



Jaw Ø 1.8 mm,
180 cm length

MACRO



Jaw Ø 3.0 mm,
230 cm length

TRUBITE PAEDIATRICS



Jaw Ø 1.8 mm,
180 cm length

LARGE CAPACITY



Jaw Ø 2.4 mm,
180 cm length



Jaw Ø 2.4 mm,
180 cm length

SPECIFICATIONS

REF	Working channel Ø mm	Length mm	Opening width mm	Jaw Ø mm	Spike	T-Block	Covering	Jaw	Grip
TECHBITE™									
EBF33-11023180	2.8	1800	6.7	2.3	No	Yes	Orange	Smooth	1-ring
EBF33-11023230	2.8	2300	6.0	2.3	No	Yes	Blue	Smooth	1-ring
EBF33-11123180	2.8	1800	6.7	2.3	Yes	No	Orange	Smooth	1-ring
EBF33-11123230	2.8	2300	6.7	2.3	Yes	No	Blue	Smooth	1-ring
EBF43-11023180	2.8	1800	6.7	2.3	No	No	Orange	Serrated	1-ring
EBF43-11023230	2.8	2300	6.7	2.3	No	No	Blue	Serrated	1-ring
EBF43-11123180	2.8	1800	6.7	2.3	Yes	No	Orange	Serrated	1-ring
EBF43-11123230	2.8	2300	6.7	2.3	Yes	No	Blue	Serrated	1-ring
TRUBITE									
EBF53-11023180	2.8	1800	6.7	2.3	No	No	Orange	Smooth	1-ring
EBF53-11023230	2.8	2300	6.7	2.3	No	No	Blue	Smooth	1-ring
EBF53-11123180	2.8	1800	6.7	2.3	Yes	No	Orange	Smooth	1-ring
EBF53-11123230	2.8	2300	6.7	2.3	Yes	No	Blue	Smooth	1-ring
EBF63-11023180	2.8	1800	6.7	2.3	No	No	Orange	Serrated	1-ring
EBF63-11023230	2.8	2300	6.7	2.3	No	No	Blue	Serrated	1-ring
EBF63-11123180	2.8	1800	6.7	2.3	Yes	No	Orange	Serrated	1-ring
EBF63-11123230	2.8	2300	6.7	2.3	Yes	No	Blue	Serrated	1-ring
SPECIAL FORCEPS									
TECHBITE™ – PAEDIATRICS									
EBF33-11018180	2.0	1800	4.5	1.8	No	No	Yellow	Smooth	1-ring
EBF43-11018180	2.0	1800	4.5	1.8	No	No	Yellow	Serrated	1-ring
EBF43-11118180	2.0	1800	4.5	1.8	Yes	No	Yellow	Serrated	1-ring
TRUBITE – PAEDIATRICS									
EBF53-11018180	2.0	1800	4.5	1.8	No	No	Yellow	Smooth	1-ring
EBF53-11118180	2.0	1800	4.5	1.8	Yes	No	Yellow	Smooth	1-ring
EBF13-11018180	2.0	1800	4.5	1.8	No	No	Yellow	Serrated	1-ring
EBF13-11118180	2.0	1800	4.5	1.8	Yes	No	Yellow	Serrated	1-ring
TRUBITE – ENTEROSCOPY									
EBF03-11018260	2.0	2600	4.5	1.8	No	No	Yellow	Smooth	1-ring
EBF03-11023260	2.8	2600	6.7	2.3	No	No	Blue	Smooth	1-ring
TRUBITE – MACRO									
EBF03-01030230	3.2	2300	8.5	3.0	No	No	Blue	Smooth	1-ring
EBF03-01130230	3.2	2300	8.5	3.0	Yes	No	Blue	Smooth	1-ring
EBF13-01030230	3.2	2300	8.5	3.0	No	No	Blue	Serrated	1-ring
EBF13-01130230	3.2	2300	8.5	3.0	Yes	No	Blue	Serrated	1-ring
LARGE CAPACITY									
LCEBF63-10024180	2.8	1800	9.0	2.4	No	No	Orange	Serrated	1-ring
LCEBF63-10024230	2.8	2300	9.0	2.4	No	No	Blue	Serrated	1-ring
LCEBF63-10124180	2.8	1800	9.0	2.4	Yes	No	Orange	Serrated	1-ring
LCEBF63-10124230	2.8	2300	9.0	2.4	Yes	No	Blue	Serrated	1-ring

Packaging unit: 10 pieces



HOT BIOPSY FORCEPS

REMOVE BIOPSIES AND STOP BLEEDING

MICRO-TECH unites several therapeutic working steps with its practical 2-in-1 solution. On one hand, the hot biopsy forceps serve as conventional hot forceps, removing small colonic polyps precisely and safely in active mode while taking diagnostically conclusive tissue samples in non-active mode. On the other hand, they serve as an

urgent measure for stopping bleeding, since the smallest lesions can be closed again at any time via coagulation. In this respect, MICRO-TECH's hot biopsy forceps suitability for treating patients with increased risk of bleeding is unparalleled.

SPECIFIC CHARACTERISTICS

- Very comfortable to use
- High quality riveted scissors joints
- Puncture-proof PTFE insulation
- 3-ring handle with Olympus-HF-connection
- Excellent cutting properties



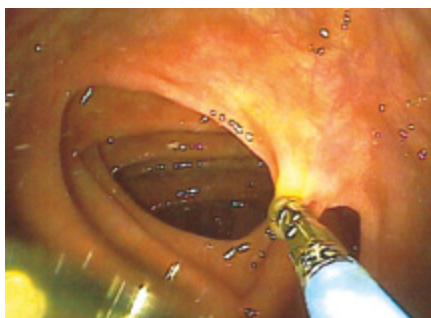
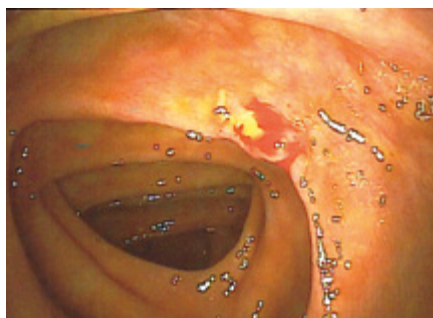
HF-connection



Scissors joint

SUCCESSFUL IN PRACTICAL USE

The hot biopsy forceps from MICRO-TECH are particularly suitable for use in patients with an increased risk of bleeding. If bleeding occurs during tissue sampling or polyp removal, this can be treated immediately and stopped via coagulation current.



Hot biopsy forceps in endoscopic use



TARGET-ORIENTED USE OF POWER

The 3-ring handle is equipped with a universal HF-connection for safe and controlled power supply. The PTFE insulation of the metal coil is impact-resistant and prevents current conductive contact with the tissue.

SPECIFICATIONS

REF	Ø mm	Length mm	Spike	Insulated	Jaw
HOT-BIOPSY FORCEPS WITH COATING					
HBFO5-11018120	1.8	1200	No	Yes	Standard
HBFO5-11018180	1.8	1800	No	Yes	Standard
HBFO5-11023180	2.3	1800	No	Yes	Standard
HBFO5-11023230	2.3	2300	No	Yes	Standard

Packaging unit: 10 pieces