

Class II A2 Biological Safety Cabinet



Button Screen

Large LCD display is easy to monitor all the safety parameters at a glance; and ergonomically sized control panel improves users interface.



Color Touch Screen

Touch operation, real-time and clearer display of various values and appointment timing function.

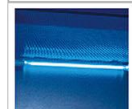


Air-Vent



Front Window

Two-layer laminated toughened glass>6mm, Anti UV



UV Lamp

Emission of 253.7 nanometers for most efficient decontamination.



Footmaster Caster

Universal caster with brake and leveling feet.



Foot Switch

Adjust front window height by foot during experiment, to avoid airflow turbulence caused by arm movement.



Waterproof Socket

2 waterproof sockets are located in the side wall, for optimum convenience of using small devices inside the cabinet.



Button Screen Type



Color Touch Screen Type

BSC-1100/1300/1500IIA2-X



Button Screen Type



Color Touch Screen Type

BSC-1800/2000IIA2-X

ADVANTAGE

1. Motorized front window.
2. Time reserve function.
3. ULPA filter life and UV life indicator.
4. Automatic air speed adjustable with filter block.
5. With memory function in case of power-failure.
6. Audio and visual alarm (Abnormal airflow velocity; Filter replacement; Front window beyond safe height; High filter pressure alarm).
7. Work area surrounded by negative pressure, it can ensure maximum safety in work area.
8. Audio and visual alarm (Filter replacement, window over height, abnormal air flow velocity etc).
9. Remote control: all functions can be realized with it, making the operation much easier and more convenient.
10. Interlock function: UV lamp and front window; UV lamp and blower, LED lamp; blower and front window.
11. Foot switch: adjust front window height by foot during experiment, to avoid airflow turbulence caused by arm movement.

TECHNICAL PARAMETERS

Model	BSC-1100IIA2-X	BSC-1300IIA2-X	BSC-1500IIA2-X	BSC-1800IIA2-X	BSC-2000IIA2-X
External Size(W*D*H)	1100*750*2250mm	1300*750*2250mm	1500*750*2250mm	1800*775*2290mm	1950*800*2170mm
Internal Size(W*D*H)	940*600*660mm	1150*600*660mm	1350*600*660mm	1625*600*660mm	1800*600*660mm
Tested Opening	Safety Height 200mm(8")				
Max Opening	420mm(17")	420mm(17")	500mm (20")	500mm(20")	400mm(16")
Inflow Velocity	0.53±0.025 m/s				
Downflow Velocity	0.33±0.025 m/s				
ULPA Filter	Two, 99.9995% efficiency at 0.12µm. Filter life indicator.				
Front Window	Motorized. Two-layer laminated toughened glass ≥ 6mm. Anti UV.				
Noise	≤ 67dB				
UV Lamp	30W*1	30W*1	40W*1	40W*1	40W*1
	UV timer, UV life indicator, emission of 253.7 nanometers for most efficient decontamination.				
Illuminating Lamp	LED lamp				
	12W*2	12W*2	16W*2	16W*2	16W*2
Illumination	≥1000Lux				
Consumption	600W	800W	1350W	1300W	1700W
Waterproof Sockets	Two, total load of two sockets: 500W				
Display	LCD display: exhaust filter and downflow filter pressure, filter and UV lamp working time, inflow and downflow velocity, filter life, humidity and temperature, system working time etc.				
Control System	Microprocessor				
Airflow System	70% air recirculation, 30% air exhaust				
Visual and audio alarm	Abnormal airflow velocity, Filter replacement, Front window at unsafe height, High filter pressure alarm.				
Material	Work Zone: 304 stainless steel				
	Main Body: Cold-rolled steel with anti-bacteria powder coating.				
Work Surface Height	750mm(Size can be customized according to requirements)				
Caster	Footmaster caster				
Power Supply	AC220V±10%, 50/60Hz; 110V±10%, 60Hz				
Standard Accessory	LED lamp*2, UV lamp*1, Base stand, Remote control, Foot switch, Drain valve, Waterproof sockets*2				
Optional Accessory	Water and gas tap, Electric height adjustable base stand,Armrest,chair				
Gross Weight	220kg	280kg	316kg	366kg	420kg
Package Size(W*D*H)	1220*1000*1820mm	1460*1000*1820mm	1630*1000*1820mm	1930*1000*1820mm	2090*1050*1860mm

Table Top Autoclave Class B series

As a type of high pressure sterilizer, it takes steam as its sterilization medium which is fast, safe and economic. They are common used in medical health care institution or R&D institution to make the sterilization for wrapped or unwrapped instrument, fabric, utensils, culture medium, unsealed liquid, etc.



Features:

* Brand-new operation interface

The LCD touch screen can display temperature, pressure, time, operating status, error and alarm information, etc.

There are different color changes in each stage of sterilization.

It is convenient for users to observe the sterilizer running status.

More importantly, the fault alarm not only displays the fault code, but also automatically displays the reason analysis and solution.

* Multiple safety protection devices

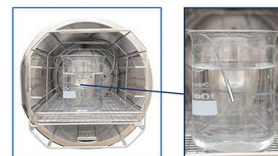
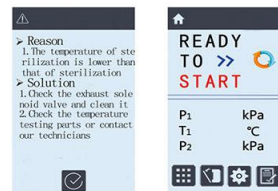
Automatic over-temperature protection device, multiple control and protection of evaporator, door safety interlock protection, double over-pressure protection device, etc.

* Mobile temperature sensor

The mobile temperature probe can directly detect the internal temperature of the liquid to ensure the sterilization effect of the liquid.

* Automatic door structure

Sterilizer adopts automatic door structure, which is fast and convenient to operate, effectively protects human body and prevents scalding.



* Vacuuming system

High efficiency vacuum extraction system, low working noise, over -90KPa extreme vacuum, fast extraction speed, good dryness, more complete sterilization

* A variety of programs

There are exposed procedures, packaging procedures, rubber procedures, dressing procedures, liquid procedures, liquid customization, solid customization, medium sterilization procedures, B&D testing, vacuum testing and media dissolution procedures.



* Other features

A. Heating, sterilizing, exhausting and drying totally automatic.

B. Chamber is heated by film heater, saving energy and time.

C. 0.22μm high efficiency air filter, to avoid re-contamination of sterilized materials with filtration efficiency over 99.5%.

D. Water filter in tank and chamber are quick to disassemble and easy for cleaning.

E. Built-in stainless steel water tank, inner cycle of steam and water.

F. Standard built-in printer.

G. Standard USB port.

Technical Parameters:

Model	BKM-Z45B	BKM-Z60B	BKM-Z80B
Capacity	45L	60L	80L
Chamber Size(mm)	φ316*621	φ386*520	φ386*692
Design Pressure	-0.1/0.3MPa		
Sterilization Temperature	105℃~134℃		
Chamber Material	SUS304		
Ambient Temp.	5℃~40℃		
Consumption	5.8KW	6.2KW	
Power Supply	AC220V, 50Hz(Standard); AC110/220V, 60Hz(Optional); Wiring Method: Air switch		
External Size(W*D*H)mm	610*1020*610	805*940*700	805*1140*700
Package Size(W*D*H)mm	750*1200*880	960*1130*940	960*1330*940
Gross Weight(kg)	165	215	230

Note: It is applicable to the altitude below 3500 meters, and the parts need to be changed when the altitude is over 2000 meters.

-25°C Freezer (Separate Refrigerator)



265L

368L

Technical Parameters

Model	BDF-25V265	BDF-25V368
External Size(W*D*H) mm	576*641*1687	720*830*1870
Capacity	Upper:160L Lower:105L	Upper:189L Lower:179L
Temp.Range	Upper: 2°C~8°C Lower: -10°C~-25°C	Upper: 2°C~8°C Lower: -10°C~-25°C
Temp. Accuracy	0.1°C	
Control System	Microprocessor control	
Alarm	Sensor failure alarm, high or low temperature alarm, open the door alarm; Thermostat failure (for BDF-25V368)	
Cooling Method	Upper: Air refrigeration; Lower: Direct cooling	
Refrigerant	CFC free	
Condenser	Wire tube condenser	
Construction	Structure	Unibody design and thickened environmental protection foam insulation layer
	Internal Material	PS plate Cold-rolled steel coated with
	External Material	Pre-coated galvanized plate anti-bacteria powder
Shelf / Drawer / Basket	Upper: 3 shelves, Lower: 4 drawers	Upper: 3 plastic dipping shelves Lower: 2 plastic dipping shelves, 6 PS drawers
Consumption	125W	300W
Power Supply	AC220V±10%, 50/60Hz	AC220V±10%, 50/60Hz; AC110V ±10%, 60Hz
Package Size(W*D*H) mm	656*696*1739	775*920*1990
Gross Weight	65kg	166kg

-40°C Freezer



58L

90L

368L

Technical Parameters

Model	BDF-40V58	BDF-40V90	BDF-40V368
External Size(W*D*H)	540*620*1115mm	600*610*945mm	720*830*1870mm
Internal Size(W*D*H)	361*405*406mm	440*447*640mm	Upper:580*626*625mm Down:466*636*625mm
Capacity	58L	90L	Upper:189; Down:179L
Type	Vertical		
Temp. Range	-15°C~-40°C		Upper:2°C~8°C Down:-20°C~-40°C
Temp. Accuracy	0.1°C		
Control System	Microprocessor Control LED Display		
Alarm	BDF-40V58: High or low temperature alarm, sensor failure alarm; BDF-40V90&BDF-40V368: High or low temperature alarm, sensor failure alarm, power failure alarm, door open alarm.		
Refrigeration Type	Direct Refrigeration		
Refrigerant	R404a and R23	R290	R600a and R290
Compressor	Unicompressor, imported famous brand compressor		
Material	Structure	Unibody design	
	Internal	304 stainless steel	
	External	Sprayed steel plate	
Shelf	1 pc shelf	2 pcs shelves	Upper: 3 pcs shelves Down: 2 pcs shelves and 6 drawers
Consumption	340W	252W	402W
Power Supply	AC220V±10%, 50/60Hz; AC110V±10%, 60Hz(except BDF-40V90)		
Package Size	610*690*1275mm	725*735*1160mm	775*920*1990
Gross Weight	98kg	83kg	166kg

-86°C Freezer



158L



338L



408L

Technical Parameters

Model	BDF-86V158		BDF-86V338	BDF-86V408
External Size(W*D*H) mm	700*700*1580		880*980*1940	891*930*1945
Internal Size(W*D*H) mm	460*455*800		488*607*1140	606*575*1180
Capacity	158L		338L	408L
Type	Vertical			
Temp. Range	-40~-86℃		-40~-86℃	-40~-86℃
Temp. Accuracy	0.1℃		0.1℃	0.1℃
Control System	Microprocessor control, LED Display		Microprocessor control, LCD touch screen	Microprocessor control, LED Display
Audible and Visual Alarm	High and low temperature alarm, sensor fault alarm		High and low temperature, Sensor failure, Door ajar, Power failure, Voltage abnormal, Ambient temperature abnormal, Low voltage, Filter blocking	
Refrigeration type	Optimized auto-cascade refrigerating system			
Refrigerant	R404a and R23		R290 and R170	
Compressor	1 set		2 sets	1 set
Condenser&Evaporator	Made of copper			
Construction	Structure	120mm ultra-thick foam layer	100mm ultra-thick foam layer	150mm ultra-thick foam layer
	Internal Material	SS 304		
	External Material	Sprayed steel plate		
Door	Lockable door			
Caster	4 casters			
Chamber with Inner Door	3		2	2
Shelf	2 pcs		3 pcs	3 pcs
Temp. Test Port	1, φ18mm		1, φ25mm	1, φ25mm
Consumption	650W		870W	890W
Power Supply	AC110V/220V±10%, 50/60Hz			
Standard Accessory	/		72 hours battery backup for power failure alarm, USB port	
Max. Optional Storage Racks	/		12*R244B	The first and fourth floors: 8*R254B
Max. Optional Boxes	/		192	Second and third floor: 8*R244B
Package Size (W*D*H) mm	800*780*1750		940*1070*2130	955*955*2100
Gross Weight	155kg		305kg	291kg



108L



340L



588L

Technical Parameters

Model	BDF-86V108		BDF-86V340	BDF-86V588
External Size (W*D*H)mm	700*730*1260		875*980*1900	880*1080*2000
Internal Size (W*D*H)mm	460*460*510		488*607*1140	606*738*1310
Capacity	108L		340L	588L
Type	Vertical			
Temp. Range	-40℃~-86℃		-40℃~-86℃	-40℃~-86℃
Temp. Accuracy	0.1℃			
Control System	Microprocessor control, LED display		Microprocessor control, LED display	Microprocessor control, LCD touch screen
Audio and Visual Alarm	High and low temperature, Sensor failure		High and low temperature, Sensor failure, Door ajar, Power failure, Voltage abnormal, Ambient temperature abnormal, Low voltage, Filter blocking	
Refrigeration Type	Optimized auto-cascade refrigerating system		Direct refrigeration	
Refrigerant	R404a and R23		R290 and R170	
Compressor	1 set		1 set	2 sets
Condenser&Evaporator	Made of copper			
Construction	Structure	120mm ultra-thick foam layer		150mm ultra-thick foam layer
	Internal Material	SS 304		
	External Material	Sprayed steel plate		
Door	Lockable door			
Caster	4 casters			
Chamber with Inner Door	2		2	2
Shelf	1 pcs		3 pcs	3 pcs
Temp. Test Port	1, φ18mm		1, φ25mm	1, φ25mm
Consumption	520W		810W	815W
Power Supply	AC110V/220V±10%, 50/60Hz			
Standard Accessory	/		72 hours battery backup for power failure alarm, USB port	
Max. Optional Storage Racks	/		12*R244B	16*R255B
Max. Optional Boxes	/		192	400
Package Size (W*D*H)mm	785*800*1430		935*1070*2130	975*1140*2200
Gross Weight	133kg		283.5kg	368kg

Single Speed Mini Centrifuge



Application:

The mini centrifuge is used for serum extraction from whole blood, supernate extraction from different samples, micro blood cell separation, bio-sample treatment, samples quick sedimentation and PCR sample treatment.

Features:

- * Rotor with 8 position & rotor for PCR strip tube
- * Unique rotor clip design, easy to install and replace
- * Long life, reliable motor, low noise, stable running
- * Humanization design, switch control for cover
- * Unibody casing looks wonderful



Technical Parameters:

Model	Mini-12	Mini-7	Mini-5
Max Speed	12000rpm	7000 rpm	5000 rpm
Max RCF	7776×g	2650×g	1350×g
Capacity	0.2/0.5/1.5/2.0ml*8; 8*4*0.2ml (PCR tube)		
Rotor	8*2/1.5ml rotor (With 0.2ml and 0.5ml adapter); 8*4*0.2ml PCR tube		
Power	110VAC 60Hz; 220VAC 50/60Hz AC110V-265V, 50/60Hz		
Consumption	30W	20W	
Noise	65dB(A)	≤45dB(A)	
External Size	178*178*115mm		
Package Size	320*250*210 mm		
Net Weight	1.3kg	1kg	
Gross Weight	2.4kg	2kg	

Mini High Speed Centrifuge



Features:

- * Speed up to 15000rpm (15100×g)
- * Brushless DC motor drive quickly to the target speed
- * Quiet working, Low noise ≤54dB
- * Cast iron chassis, low center of gravity, vacuum suction cup feet, double safety guarantee.
- * Wide voltage design, the speed is not affected by voltage fluctuations, and the speed accuracy is high.

Technical Parameters:

Model	D2012 plus
Max. Speed	15000rpm(500-15000rpm)increment:100rpm
Max. RCF	15100×g, increment: 100×g
Speed Accuracy	±20rpm
Rotor Capacity	2mL*12
Run Time	30sec-99min/Continuous
Acceleration/Braking Time	11s/9s↓
Driving Motor	Brushless DC motor
Safety Devices	Door interlock; Over-speed detection; Over-temperature detection; Automatic internal diagnosis
Power	Single-phase, AC100V-240V; 50Hz/60Hz, 3A; 100W
Noise Level	≤54dB
Dimension (D*W*H)	255*245*140mm
Package Size (D*W*H)	455*345*250mm
Gross Weight	6.54kg
Other Functions	Speed/RCF switch; Short-time run function; Sound-alert function; Running process display

Standard Outfit:

Adapted Rotor

Model	A12-2P(19400010)
Max.Speed	15000rpm
Max.RCF	15100xg
Rotor Capacity	2mL*12
Rotor Material	High strength plastic
Adapted Rotor Adapter	A02P2,A05P2

Optional Accessories:

Adapted Adapter

Model	A02P2(19500001)	A05P2(19500002)
Descriptions	0.2ml rotor adapter for A12-2,A12-2P, AS24-2 andA24-2P rotors,24pcs/pk	0.5ml rotor adapter for A12-2,A12-2P, AS24-2 andA24-2P rotors,24pcs/pk

Vortex Mixer



Features:

- * Touch operation or continuous mode.
- * Variable speed control from 0 to 2500rpm (MX-S).
- * Fixed Speed 2500rpm (MX-F).
- * Used for various mixing applications with optional adapters (MX-S).
- * Specially designed vacuum suction feet for body stability.
- * Robust aluminum-cast construction.
- * When the test tube adapter or flat gasket accessory is selected, it must be matched with VY1.2 or VT1.3.

Accessories for MX-S:

Technical Parameters:

Model	MX-S	MX-F
Item No.	8031102000	8031101000
Shaking Mode	Orbital	
Orbital Diameter	4mm	
Motor Type	Shaded pole motor	
Motor Input	58W	
Motor Output	10W	
Speed Range	0~2500rpm	2500rpm
Speed Display	Scale	/
Operation Mode	Continuous/touch operation	
Ambient Temp.	5-40°C	
Relative Humidity	80%	
Protection Type	IP21	
Power Consumption	60W	
Power Supply	AC110/220V±10%, 50/60Hz (Customizable)	
Standard Accessories	VT1.1 Standard top	
External Size(W*D*H)	127*130*160mm	
Package Size(W*D*H)	300*250*230mm	
Gross Weight	3kg	

Optional Accessories:

Accessories	MX-S (0~2500rpm)	
	Touch Mode (High Speed Area)	Continuous Mode (Low Speed Area)
VT1.1	Standard	Standard
VT1.2 + VT1.3.1	Optional	/
VT1.2 + VT1.3.2	Optional	/
VT1.2 + VT1.3.3	Optional	/
VT1.2 + VT1.3.4	Optional	/
VT1.2 + VT1.3.5	Optional	/
VT1.3 + VT1.3.6	Optional	/
VT1.3 + VT1.3.1	/	Optional
VT1.3 + VT1.3.2	/	Optional
VT1.3 + VT1.3.3	/	Optional
VT1.3 + VT1.3.4	/	Optional
VT1.3 + VT1.3.5	/	Optional

Application of accessories:

Cat. No.	P/N
18900034	VT1.1
18900044	VT1.2
18900505	VT1.3+VT1.3.7
18900020	VT1.3.1
18900021	VT1.3.2
18900395	VT1.3.8
18900022	VT1.3.3
18900023	VT1.3.4
18900024	VT1.3.5
18900043	VT1.3.6
18900158	VT1.3.7

PCR Centrifuge



Features:

- * Microprocessor control, LED display.
- * Brushless motor, free maintenance, speed up and down quickly.
- * Electric lid lock, over speed and imbalance protection.
- * Easy to set and read RCF, speed synchronizes in time.



0.2ml*4*8

Technical Parameters:

Model	BKC-PCR16
Max. Capacity	6*10ml
Max. Speed	16000rpm
Max. RCF	19040×g
Speed Precision	±20rpm
Temp. Range	-20℃~40℃
Temp. Accuracy	±1.0℃
Timing Range	1~99min
Noise	≤55dB
Power Supply	AC220V, 50/60Hz
External Size(W*D*H) mm	480*480*275
Package Size(W*D*H) mm	630*560*450
Net Weight(kg)	43
Gross Weight(kg)	57

Rotor:

No.	Rotor	Volume(ml)	Max Speed(r/min)	MaxRCF(×g)
No.1	Angle Rotor	6*10ml	13000	14190
No.2		40*0.5ml	13000	17210
No.3		12*1.5ml	16000	17940
No.4		20*1.5ml	14000	15580
No.5		24*1.5ml	14000	17950
No.6		30*1.5ml	13000	17930
No.7		48*1.5ml	12000	15280
No.8		24 capillaries	12000	15800
No.9		10*5ml	16000	17800
No.10		12*8PCR	13000	17220
No.11		8*8PCR	13000	11540
No.12		4*8PCR	14000	13720
No.13		6*8PCR	12000	15800

Automatic Uncovering Centrifuge



BKC-AU4



BKC-AU5/5R

Features:

- * LCD display, microprocessor control.
- * Stainless steel chamber.
- * Mute mechatronics motor door lock.
- * Can store 20 procedures.
- * 10 levels speed-up and speed-down control.
- * Brushless motor:
 - variable frequency, free from contamination caused by carbon dust.



Technical Parameters:

Model	BKC-AU4	BKC-AU5	BKC-AU5R
Hole Position	48/76	124/148	124/148
Centrifuge Tube Length	75mm or 100mm		
Max. Speed	4000rpm	4000rpm	4000rpm
Max. RCF	3100×g	3400×g	3400×g
Speed Precision	±50rpm		
Refrigeration System	/		CFC-free (R404a)
Temp. Range	/		-20℃~40℃
Temp. Precision	/		±1℃
Control and Drive System	Frequency motor, micro control, direct driver		
Identify Rotor	/		Automatic
Timing Range	0~99h59min		
Noise	≤65dB		
Consumption	800W	1000W	2000W
Power Supply	AC110/220V, 50/60Hz		
External Size(W*D*H) mm	630*500*420	710*560*770	710*560*770
Package Size(W*D*H) mm	780*840*570	900*750*970	900*750*1195
Net/Gross Weight(kg)	50/88	75/155	150/215

Denaturation & Hybridization System



Features:

- * This instrument is adopted FISH processing step, which can reduce a lot of manual operating time and avoid the damage of harmful reagent.
- * Full touch screen operation, friendly human interface.
- * Support restart functionality runs an unexpected power outage, when power is restored can be scheduled to automatically back up and running.
- * Supporting automatic cooling function after running over.
- * Supporting automatic warm-up function.
- * Platform high precision of temperature control, low fluctuation.
- * Can deal with 12 slides.
- * Support 105 custom programs stored functions.
- * Integrated denaturation and hybridization, hybrid, multiple-step operation three modes of operation.

Technical Parameters:

Model	BK-DH2000
Temperature Control Range	RT+5°C~100°C
Temperature Setting Range	0°C~100°C
Capacity	12 Slides
Temperature Accuracy	±1°C
Temperature Uniformity	±1°C
Timing Range	1min~99h59min
Heating Time(37°C to 95°C)	≤2min
Cooling Time(95°C to 45°C)	≤6min
Power	350w
Power Supply	220V/50/60Hz
External Size(L*W*H)	440*220*120mm
Packing Size(W*D*H)	580*370*300mm
Gross Weight	7kg

Thermo Shaker Incubator



Features:

- * LCD display. It is easy to setup and use.
- * Reliable design with inner extra temperature protection.
- * Each thermo shaker is equipped with lifter that is easy to replace different blocks.
- * Digital accuracy and convenience.
- * Precision wells for uniform thermal transfer.
- * Assorted blocks for a wide variety of tube sizes.
- * Brushless DC Motor: noiseless long service life maintenance-free.
- * Conform to CE safety standard.
- * Accurately control and display time, temperature and speed.

Technical Parameters:

Model	BK-TS110	Model	BK-TS110
Temperature Setting Range	0°C~100°C	Auto Heating	Yes
Temperature Control Range	RT-20°C~100°C	Auto Resume To Run	Yes
Timing Range	1min~99h59min/∞	Power Supply	150w
Temperature Accuracy	±0.3°C	Fuse	250V 3A Φ5×20
Temperature Uniformity	±0.3°C	Heating Time	≤15min
Shaking Speed	200rpm~1500rpm	Cooling Time	≤15min(RT~RT-20°C); ≤10min (100°C~20°C)
Orbit	3mm	Voltage	AC110~220V/50~60Hz
Multi Point Running	Yes (Max 5points)	Dimension	260*195*150mm
Multi Cycle	Yes (Max 99times)	Packing Size(W*D*H)	410*320*310mm
Auto Running	Yes	Gross Weight	9.5kg
Storage At 4°C	Yes		

Optional Blocks:

Type	Test Tube Diameter	Type	Test Tube Diameter
B30	96*0.2ml	B36	24*5ml
B31	54*0.5ml	B37	15*10ml
B32	35*1.5ml	B38	12*15ml
B33	35*2.0ml	B39	6*50ml(round-shape bottom)
B34	15*0.5ml+20*1.5ml	B39-S	6*50ml(cone-shape bottom)
B35	96*0.2ml(elisa plate)	/	/

Microplates Shaker

Features:

- * LCD display system status and parameters.
- * Stable and reliable shaking.
- * Easy to operate with one touch knob.
- * Automatic fault detection and buzzer alarm function.
- * 12-month warranty.



Technical Parameters:

Model	BK-TS100
Time Range	1min~99h59min
Mixing Orbit	3mm
Sample Capacity	4plates
Power Supply Voltage	AC110~240V, 50/60Hz
Speed Range	200~1600rpm
Speed Step Value	10rpm
Consumption	45W
Dimension	280*270*140mm
Packing Size(W*D*H)	440*360*260mm
Weight	4.0kg
Gross Weight	6.5kg

Ball Mill

Vertical Planetary Ball Mill(Semi-circle Type)

Application:

Planetary Ball Mill has four ball grinding tanks installed on one turntable. When the turntable rotates, the tank axis makes planetary movements, the balls and samples inside the tanks are impacted strongly in high speed movement, and samples are eventually ground into powder. Various kinds of different materials can be ground by the mill with dry or wet method. Minimum granularity of ground powder can be as small as 0.1µm.



Features:

- * 3D curve shape design.
- * Special gear with low noise.



Visual Window



Planetary Mechanism



Frequency Converter Control



Hole of Cooling Fan

Technical Parameters:

Model	BKBM-V0.4	BKBM-V2
Capacity	0.4L	2L
Volume of Each Capacity	50~100ml	50~500ml
Pot Quantity	4 pcs	
Running Time Range	1~9999min	
Reciprocal Running Time	1~999min	
Adjustable Speed	Revolution 45~435rpm	35~335rpm
Speed	Rotation 90~870rpm	70~670rpm
Noise	58±5dB	60±5dB
Speed Control Mode	Frequency Control	
Transmission Mode	Gear Drive	
Working Mode	2 or 4 pots can be used each time	
Maximum Sample Volume (material + grinding ball)	2/3 of the volume of the ball mill tank	
Feed Size	Soft and Crispy material<10mm, Other materials<3mm	
Out-put Granularity	Minimum Granularity can be reached to 0.1um	
Adjusting Mode of Rotate Speed	Frequency converter with stepless speed regulation	
Consumption	0.25KW	0.75KW
Power Supply	AC110/220V±10%, 50/60Hz	
External Size(W*D*H)mm	530*300*340	750*470*565
Package Size(W*D*H)mm	595*360*485	820*530*720
Net Weight(kg)	29	80
Gross Weight(kg)	50	100

Note: Both pot and ball are optional. For a ball mill with a capacity of 2L, if the matching mill pot specification is 25ml or 50ml, you need to purchase a base holder separately.

Vertical Planetary Ball Mill(Square Type)



Features:

- * 3D curve shape design.
- * Special gear with low noise.



Planetary Mechanism



Frequency Converter Control



Hole of Cooling Fan



Pneumatic Rod

Technical Parameters:

Model	BKBM-V2S
Capacity	2L
Volume of Each Capacity	50~500ml
Pot Quantity	4pcs
Running Time Range	1~9999min
Reciprocal Running Time	1~999min
Adjustable Speed	Revolution 35~335rpm
Revolution	Rotation 70~670rpm
Noise	60±5dB
Speed Control Mode	Frequency Control
Transmission Mode	Gear Drive
Working Mode	2 or 4 pots can be used each time
Maximum Sample Volume (material + grinding ball)	2/3 of the volume of the ball mill tank
Feed Size	Soft and Crispy material<10mm, Other materials<3mm
Out-put Granularity	Minimum Granularity can be reached to 0.1um
Adjusting Mode of Rotate Speed	Frequency converter with stepless speed regulation
Consumption	0.75KW
Power Supply	AC110/220V±10%, 50/60Hz
External Size(W*D*H)mm	770*470*570
Package Size(W*D*H)mm	820*540*680
Net Weight(kg)	93
Gross Weight(kg)	113

Note: Both pot and ball are optional. For a ball mill with a capacity of 2L, if the matching mill pot specification is 25ml or 50ml, you need to purchase a base holder separately.

Hotplate Magnetic Stirrer



Technical Parameters:

Model	MS7-H550-Pro	MS7-H550-S	MS-H-ProA	MS-H-Prot	MS-H-S	MS-H280-Pro
Item No.	8030122111	8030122211	8060221110	8030201110	8030211010	8030101212
Work Plate Size	184*184mm (7 inch)		φ135mm (5 inch)			
Work Plate Material	Glass ceramic		Aluminum	Stainless steel with ceramic coated		
Max. Stirring Capacity	20L	10L	20L			3L
Motor Type	Brushless DC motor	Shaded pole motor	Brushless DC motor			
Motor Input	18W	15W	18W			5W
Motor Output	10W	1.5W	10W			3W
Speed Range	100~1500rpm	0~1500 rpm	100~1500rpm		0~1500rpm	200~1500rpm
Speed Display	LCD	Scale	LCD		Scale	LED
Speed Display Accuracy	±1rpm	/	±1rpm			±1rpm
Heating Output	1000W		600W	500W		
Heating Temp. Range	RT-550℃, increment 1℃	RT-550℃, increment 5℃	RT-340℃, increment 1℃		RT-340℃	RT-280℃, increment 1℃
Control Temp. Accuracy	±1℃(<100℃) ±1%(>100℃)	±10℃	±1℃(<100℃) ±1%(>100℃)		/	±1℃(<100℃) ±1%(>100℃)
Overheating Protection	580℃		420℃			320℃
Temp. Display	LCD	LED	LCD		Scale	LED
Display Temp. Accuracy	±0.1℃	±1℃	±0.1℃		/	±1℃
Timing Range	/			1~99h59min	/	
Optional Accessory	PT1000 (accuracy ±0.2℃)				/	PT1000 (accuracy ±0.5℃)
Residual Heat Warning	50℃				/	50℃
Max. Stirrer Bar Length	80mm					50mm
Interface	RS232	/	RS232		/	/
Protection Type	IP21		IP21	IP42	IP21	
Working Environment	5~40℃, 80%RH					
Power Consumption	1050W	1030W	650W	550W	530W	515W
Power Supply	AC110/220V±10%, 50/60Hz (Customizable)					
External Size(W*D*H)	215*360*112mm		160*280*100mm	160*280*85mm		150*260*80mm
Package Size(W*D*H)	500*360*270mm		470*260*250mm		310*250*230mm	
Gross Weight	7kg		5kg			4kg

Magnetic Stirrer



Technical Parameters:

Model	MS-S	MS-PA	MS-PB
Work Plate Size	φ135mm (5 inch)		
Item No.	8030211000	8030284200	8030294000
Work Plate Material	Stainless steel with ceramic coated	Nylon + GF	
Max. Stirring Capacity	20L	3L	
Motor Type	Brushless DC motor		
Motor Input	18W	5W	
Motor Output	10W	3W	
Speed Range	0~1500rpm		
Speed Display	Scale	LED	Scale
Max. Stirrer Bar Length	80mm	50mm	
Working Environment	5~40℃, 80%RH	10-40℃, 80%RH	
Protection Type	IP42		
Power Consumption	30W	15W	10W
Power Supply	AC110/220V±10%, 50/60Hz (Customizable)		
External Size(W*D*H)	160*280*85mm	150*260*80mm	
Package Size(W*D*H)	480*260*250mm	310*250*230mm	
Gross Weight	4kg	3kg	

Portable pH/ORP Meter



Measurement Parameters:

PH-220: pH, mV, temperature

PH-221: pH, mV, relative mV, temperature

PH-220 Features:

- * 1 to 3 points calibration with automatic recognition for USA and NIST buffers.
- * Automatic electrode diagnosis helps user decide whether to replace the pH electrode.
- * Automatic temperature compensation ensures accurate readings over the entire range.
- * Auto-Read function senses and locks the measurement endpoint.
- * Setup menu allows setting the pH buffer set, number of calibration points, temperature unit, auto-power off, etc.
- * Reset function automatically resumes all settings back to the factory defaults.
- * Expanded memory stores or recalls up to 100 data sets.
- * USB communication interface for data transfer or connecting a power adapter to meter.

PH-221 Features:

pH

- * 1 to 5 points calibration with automatic recognition for USA, NIST and DIN buffers.
- * Automatic electrode diagnosis shows the pH slope and offset.
- * Automatic temperature compensation ensures accurate readings over the entire range.
- * Calibration due alarm prompts user to calibrate the meter regularly.

ORP

- * 1 point offset calibration allows adjusting the displayed value to a known standard
- * Relative and absolute millivolt modes ensure the reliable ORP measurements

General Features

- * Auto-Read function senses and locks the measurement endpoint
- * Auto-Power Off effectively conserves battery life
- * Setup menu allows setting the pH buffer set, number of calibration points, resolution, stability criteria, temperature unit, date and time, etc.
- * Reset function automatically resumes all settings back to the factory defaults
- * Expanded memory stores or recalls up to 500 data sets
- * USB communication interface is easy to transfer data to PC
- * Multi-mode power scheme (batteries, power adapter and USB port) ensures that using the meter smoothly

Accessories:

- * PH electrode
- * Temperature probe
- * PH buffer solutions (pH4.01/7.00/10.01)
- * Carrying case



Technical Parameters:

Model		PH-220	PH-221
pH	pH Range	-2.00~20.00pH	-2.000~20.000pH
	pH Accuracy	±0.01pH	±0.002pH
	Resolution	0.01pH	0.1, 0.01, 0.001pH, Selectable
	Calibration Points	1 to 3 points	1 to 5 points
	pH Buffer Options	USA (4.01/7.00/10.01), NIST (4.01/6.86/9.18)	USA (pH1.68/4.01/7.00/10.01/12.45), NIST (pH1.68/4.01/6.86/9.18/12.45), DIN (pH1.09/4.65/6.79/9.23/12.75) or 2 custom buffers
ORP	mV Range	-1999~1999mV	-1999.9~1999.9mV
	mV Accuracy	±1mV	±0.2mV
	Resolution	1mV	0.1, 1mV, Selectable
	Calibration Points	/	1 point
Temperature	Temperature Range	0~105°C/32~221°F	
	Temperature Accuracy	±0.5°C/±0.9°F	
	Resolution	0.1°C/0.1°F	
	Offset Calibration	1 point, reading ±10°C	
Other Specifications	Temperature Compensation	0~100°C, manual or automatic	
	Stability Criteria	/	Low or high
	Calibration Due Alarm	/	1 to 31 days or off
	Slope/Offset Display	Yes	
	Hold Function	Manual or auto-endpoint	
	Auto-Off	30 minutes after last key pressed	10, 20 or 30 minutes after last key pressed
	Memory	100 data sets	500 data sets
	Communication Interface	USB	
	Connector	BNC, 3.5 mm jack socket	
	Display	Custom LCD (80 × 60 mm)	
	Power Requirements	3*1.5V AA batteries or DC5V power adapter	
	Battery Life	Approximately 150 hours (Turn off the backlight)	
	Dimensions(W*D*H)	170*85*30mm	
	Package Size(W*D*H)	475*155*350mm	
	Net Weight	300g	
	Gross weight	2kg	

Water Distiller

Electric-heating Water Distiller



Features:

- * Stainless steel material, adopt stamping and welding technology.
- * Corrosion and ageing resistance, easy to operate, safe and durable.

Technical Parameters:

Model	WD-5	WD-10	WD-20
Water Output	≥5L/H	≥10L/H	≥20L/H
Consumption	5KW	7.5KW	15KW
Power Supply	AC110/220V, 50/60Hz	380V, 50Hz	380V, 50Hz
External Size(Φ*H)	310*700mm	355*820mm	405*677mm
Package Size(W*D*H)	360*360*820mm	360*350*900mm	540*390*740mm
Gross Weight	7.5kg	8.5kg	11.5kg

Auto-control Electric-heating Water Distiller



Features:

- * Stainless steel material, adopt stamping and welding technology.
- * Water shortage and power-off alarm; automatically make up water and heat again.
- * Power, heating indicator and show water shortage.

Technical Parameters:

Model	WD-A5	WD-A10	WD-A20
Water Output	≥5L/H	≥10L/H	≥20L/H
Consumption	5KW	7.5KW	15KW
Power Supply	AC110/220V, 50/60Hz	380V, 50Hz	380V, 50Hz
External Size(Φ*H)	310*740mm	235*855mm	415*720mm
Package Size(W*D*H)	360*360*830mm	360*360*920mm	535*380*770mm
Gross Weight	8kg	9.5kg	13kg

Pipettes

Classical Mechanical Pipette



Application:

Mechanical Pipette is suitable for pharmaceutical R&D centers, school laboratories, pharmaceutical and chemical R&D companies, chemical synthesis and other places.

Features:

- * Light weight and ergonomic design to ensure a better sense of use.
- * Digital display, easy to read data.
- * The pipettes cover volume range of 0.5µl to 1ml.
- * Easy to calibrate and maintain.
- * The low part can be autoclaved without affecting performance and comfort.
- * Manufactured from innovative materials.

Technical Parameters:

Volume	Increment	Test Volume(µl)	Capacity Tolerance(%)	Test Repeatability(%)
0.5-10µl	0.1µl	1	±2	≤3
		5	±1.5	≤2
		10	±1	≤2
2-20µl	0.1µl	2	±2	≤3
		10	±1.5	≤2
		20	±1	≤2
10-100µl	1µl	10	±2	≤2
		50	±1.5	≤1
		100	±1	≤1
20-200µl	1µl	20	±2	≤2
		100	±1.5	≤1
		200	±1	≤1
100-1000µl	5µl	100	±2	≤1
		500	±1	≤0.5
		1000	±1	≤0.5

TopPette-Mechanical Pipettes

Features for TopPette:

- * Light weight, ergonomic, low force design
- * Digital display clearly reads volume setting
- * The pipettes cover volume range of 0.1µl to 10ml
- * Easy to calibrate and maintain
- * The lower part is autoclavable
- * Design helps avoid repetitive strain injuries

Features for Multi-channel TopPette:

- * 8 and 12 channel pipettes are available for standard 96-well plate
- * Dispensing head rotates ensures optimum pipetting convenience
- * Individual piston/tip cone assemblies allow easy repair and maintenance
- * Compound material tip cone design allows visual seal verification
- * Universal pipette tips can be used



MicroPette Mechanical Pipettes

Features for MicroPette:

- * Light weight, ergonomic, low force design
- * Digital display clearly reads volume setting
- * The pipettes cover volume range of 0.1µl to 10ml
- * Easy to calibrate and maintain
- * The lower part is autoclavable
- * Design helps avoid repetitive strain injuries
- * Manufactured from innovative materials

Features for multi-channel MicroPette:

- * 8 and 12 channel pipettes are available for standard 96-well plate
- * Dispensing head rotates for optimum pipetting convenience
- * Individual piston and tip cone assemblies allow easy repair and maintenance
- * Compound material tip cone design allows visual seal verification
- * Universal pipette tips can be used



MicroPette Plus Autoclavable Pipette

Fully Autoclavable:

The MicroPette plus pipettes can be fully autoclaved at 121°C, 1 atm for less than 20 mins. The pipettes can be autoclaved without special preparations. After autoclaving the pipette must be cooled down and dried over 12 hours.

Features for MicroPette plus:

- * Fully autoclavable
- * Light weight, ergonomic, low force design
- * Digital display clearly reads volume setting
- * The pipettes cover volume range of 0.1µl to 10ml
- * Easy to calibrate and maintain
- * Design helps avoid repetitive strain injuries
- * Manufactured from innovative materials

Features for multi-channel MicroPette plus:

- * 8 and 12 channel pipettes are available for standard 96-well plate
- * Individual piston and tip cone assemblies allow easy repair and maintenance
- * Compound material tip cone design allows visual seal verification
- * Universal pipette tips can be used
- * Dispensing head rotates for optimum pipetting convenience



Note: It is recommended to check the performance of the pipette after each autoclaving. It is also recommended to grease the piston and seal of the pipette after each 10 autoclaving.

Technical Parameters:

TopPette Mechanical Pipettes/ MicroPette Mechanical Pipettes / MicroPette Plus Autoclavable Pipettes (Adjustable and Fixed Volume)

Single-channel Adjustable Volume Pipettes						
Volume Range	Increment	Test Volume(μl)	Maximume Permissible Systematic Error		Maximume Permissible Random Error	
0.1-2.5μl	0.05μl	2.5	2.50%	0.0625μl	2.00%	0.05μl
		1.25	3.00%	0.0375μl	3.00%	0.0375μl
		0.25	12.00%	0.03μl	6.00%	0.015μl
0.5-10μl	0.1μl	10	1.00%	0.1μl	0.80%	0.08μl
		5	1.50%	0.075μl	1.50%	0.075μl
		1	2.50%	0.025μl	1.50%	0.015μl
2-20μl	0.5μl	20	0.90%	0.18μl	0.40%	0.08μl
		10	1.20%	0.12μl	1.00%	0.1μl
		2	3.00%	0.06μl	2.00%	0.04μl
5-50μl	0.5μl	50	0.60%	0.3μl	0.30%	0.15μl
		25	0.90%	0.225μl	0.60%	0.15μl
		5	2.00%	0.1μl	2.00%	0.1μl
10-100μl	1μl	100	0.80%	0.8μl	0.15%	0.15μl
		50	1.00%	0.5μl	0.40%	0.2μl
		10	3.00%	0.3μl	1.50%	0.15μl
20-200μl	1μl	200	0.60%	1.2μl	0.15%	0.3μl
		100	0.80%	0.8μl	0.30%	0.3μl
		20	3.00%	0.6μl	1.00%	0.2μl
50-200μl	1μl	200	0.60%	1.2μl	0.15%	0.3μl
		100	0.80%	0.8μl	0.30%	0.3μl
		50	1.00%	0.5μl	0.40%	0.2μl
100-1000μl	5μl	1000	0.60%	6μl	0.20%	2μl
		500	0.70%	3.5μl	0.25%	1.25μl
		100	2.00%	2μl	0.70%	0.7μl
200-1000μl	5μl	1000	0.60%	6μl	0.20%	2μl
		500	0.70%	3.5μl	0.25%	1.25μl
		200	0.90%	1.8μl	0.30%	0.6μl
1000-5000μl	50μl	5000	0.50%	25μl	0.15%	7.5μl
		2500	0.60%	15μl	0.30%	7.5μl
		1000	0.70%	7μl	0.30%	3μl
2-10ml	0.1ml	10ml	0.60%	60μl	0.20%	20μl
		5ml	1.20%	60μl	0.30%	15μl
		2ml	3.00%	60μl	0.60%	12μl

Note: 2~10ml is not available for micropette plus autoclaveable pipettes.

8-channel Adjustable Volume Pipettes						
Volume Range	Increment	Test Volume(μl)	Maximume Permissible Systematic Error		Maximume Permissible Random Error	
0.5-10μl	0.1μl	10	1.50%	0.15μl	1.50%	0.15μl
		5	2.50%	0.125μl	2.50%	0.125μl
		1	4.00%	0.04μl	4.00%	0.04μl
5-50μl	0.5μl	50	1.00%	0.5μl	0.50%	0.25μl
		25	1.50%	0.375μl	1.00%	0.25μl
		5	3.00%	0.15μl	2.00%	0.1μl
50-300μl	5μl	300	0.70%	2.1μl	0.25%	0.75μl
		150	1.00%	1.5μl	0.50%	0.75μl
		50	1.50%	0.75μl	0.80%	0.4μl
12-channel Adjustable Volume Pipettes						
Volume Range	Increment	Test Volume(μl)	Maximume Permissible Systematic Error		Maximume Permissible Random Error	
0.5-10μl	0.1μl	10	1.50%	0.15μl	1.50%	0.15μl
		5	2.50%	0.125μl	2.50%	0.125μl
		1	4.00%	0.04μl	4.00%	0.04μl
5-50μl	0.5μl	50	1.00%	0.5μl	0.50%	0.25μl
		25	1.50%	0.375μl	1.00%	0.25μl
		5	3.00%	0.15μl	2.00%	0.1μl
50-300μl	5μl	300	0.70%	2.1μl	0.25%	0.75μl
		150	1.00%	1.5μl	0.50%	0.75μl
		50	1.50%	0.75μl	0.80%	0.4μl
Fixed Volume Pipettes						
Volume Range	Increment	Test Volume(μl)	Maximume Permissible Systematic Error		Maximume Permissible Random Error	
5μl	/	5μl	1.3%	0.065μl	1.2%	0.06μl
10μl	/	10μl	0.8%	0.08μl	0.8%	0.08μl
20μl	/	20μl	0.6%	0.12μl	0.5%	0.1μl
25μl	/	25μl	0.5%	0.125μl	0.3%	0.075μl
50μl	/	50μl	0.5%	0.25μl	0.3%	0.15μl
100μl	/	100μl	0.5%	0.5μl	0.3%	0.3μl
200μl	/	200μl	0.4%	0.8μl	0.2%	0.4μl
250μl	/	250μl	0.4%	1.0μl	0.2%	0.5μl
500μl	/	500μl	0.3%	1.5μl	0.2%	1.0μl
1000μl	/	1000μl	0.3%	3.0μl	0.2%	2.0μl
2000μl	/	2000μl	0.3%	6.0μl	0.15%	3.0μl
5000μl	/	5000μl	0.3%	15μl	0.15%	7.5μl

Pipette Stand

The round stand can be applied to the three major pipette series-TopPette, MicroPette and MicroPette Plus. It can stably and conveniently hang up to 6 single-channel and multi-channel pipettes at the same time.



The linear stand can be applied to the three major pipette series-TopPette, MicroPette and MicroPette Plus. It can stably and conveniently hang up to 6 single-channel and multi-channel pipettes at the same time.



The linear and round stands have been designed to fit perfectly of BIOBASE Pipette range, TopPette, MicroPette and MicroPette Plus Autoclavable Pipettes. The stands are convenient to hold up 6 pipettes both of single and multi-channel.

Ordering Information:

Cat. No	Descriptions
7030000084	Round stand holds up to 6 pipettes, fit of TopPette, MicroPette and MicroPette Plus
7030000085	Linear stand holds up to 6 pipettes, fit of TopPette, MicroPette and MicroPette Plus

Dispenser

DispensMate Bottle-Top Dispenser

Features:

- * Excellent chemical resistance
- * Fully autoclavable at 121°C
- * Easy to clean and maintain
- * Made of PTFE, FEP, BSG, PP
- * Four ranges of bottle-top dispenser cover a volume range from 0.5ml to 50ml
- * The optional flexible discharge tube with safety handle permits fast and precise dispensing
- * Vapor pressure Max. 500mbar, viscosity max. 500mm²/s, temperature max. 40°C, density max. 2.2g/cm³
- * DispensMate plus is supplied with S40, GL32, GL38, GL25, GL28 sized adapters



Technical Parameters:

Volume Range	Graduation	A≤±		CV≤	
0.5-5ml	0.1ml	0.5%	25μl	0.1%	5μl
1.0-10ml	0.2ml	0.5%	50μl	0.1%	10μl
2.5-25ml	0.5ml	0.5%	125μl	0.1%	25μl
5.0-50ml	1.0ml	0.5%	250μl	0.1%	50μl

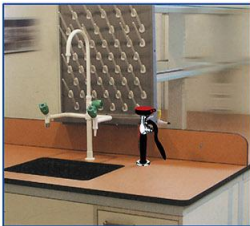
A = Accuracy; CV = Coefficient of variation.

Ordering Information:

Cat. No.	Volume Range	Cat. No.	Volume Range
		Standard Accessories	
7012100101	0.5-5ml	17000069	S40, Adapter, 45/40mm
7032100002	1-10ml	17400017	GL32, Adapter, 45/32mm
7032100003	2.5-25ml	17400018	GL38, Adapter, 45/38mm
7032100004	5-50ml	17400019	GL25, Adapter, 32/25mm
		17400020	GL28, Adapter, 32/28mm
		17400021	Filling tube (m)
		17400073	Discharge tube (m)
		Optional Accessories	
		17400037	Reagent Bottle (Brown, 1L)

Eye Washer

Deck Mounted Eye Washer



EW-DM1



EW-DM2



EW-DM3

Max. working pressure: 7Bar
Valve: None-return valve, shut off automatically
Hose: Length 1.4m, PVC with stainless steel net
Sprayer head: Soft rubber, softened water spray for eye protection
Dust shield cap: PP, removed automatically when eye washer is operated
Switch: Automatic trigger locking for easy hand-free use
Material: Solid thick brass with high gloss epoxy powder, resistant to chemicals, UV and heat.

Technical Parameters:

Model	EW-DM1	EW-DM2	EW-DM3
Package Size(W*D*H)mm	270*170*80	440*240*120	270*170*80
Gross Weight(kg)	1	2	1

Removable Eye Washer



EW-R2



EW-R3

Max. working pressure: Max. 7Bar
Soft Pipe: length 1.5m, pp material
Installing: Desk & wall mounted, can be also drew out
Sprayer head: Softened water spray for eye protection
Dust shield cap: Removed when eye washer is operated
Package Size(W*D*H)mm: 270*170*80
Gross Weight(kg): 1

Switch: Automatic trigger locking for hand-free use
Body: Densely PP material. The valve can close automatically, safe seal
Flow control valve: Adjustable based on water pressure to adapt for the eyes.
Package Size(W*D*H)mm: 270*170*80
Gross Weight(kg): 1

Wall Mounted Eye Washer

Material: 304 stainless steel with Exquisite polished / Epoxy coating stainless steel with high gloss epoxy powder, resistant to chemicals, UV.
Eye washer bowl: stainless steel / PP bowl, water bore is made of PP(ABS shield cap), safe green, installing conveniently.
Sprayer head : water bore has been treated with; make the water more mild and abundant.
Switch: the sign of operation is near by the knob, operate simply.
Package Size(W*D*H)mm: 470*420*350
Gross Weight(kg): 8.5



EW-WM1



Wall Mounted Shower Eye Washer



S-WM2



S-CM3



SEW-WM1

Sprayer head: The flux of spray head shower&washer is ample, installing conveniently, saving space.
Tube: Stainless steel material, making the products firm and high quality, resistant to the chemicals.
Switch: The sign of operation is near by the knob, operate simply.

Technical Parameters:

Model	S-WM2	S-CM3	SEW-WM1
Package Size(W*D*H)mm	820*270*160	960*340*140	1320*440*320
Gross Weight(kg)	5.5	5	18