



Switch disconnecter 125 A, Size 2, 4-pole Front operating mechanism left
Complete unit with direct operating mechanism gray Box terminal

Model	
product brand name	SETRON
product designation	3KD switch disconnecter
design of the product	Switch
display version for switch position indicator manual operation	ON-OFF-TEST
design of the actuating element	Long rotary knob
type of the driving mechanism	Front operating mechanism
type of the driving mechanism motor drive	No
General technical data	
number of poles	4
type of device	fixed mounting
size of switch disconnecter	2
mechanical service life (operating cycles) typical	15 000
electrical endurance (operating cycles)	
• at AC-23 A at 690 V	1 500
• at DC-23 A at 440 V	1 000
I ² t value	
• with closed switch at 1000 V for combination switch +gG/aM SITOR fuse maximum	19 815 A ² ·s
• of the fuse at 500 V maximum permissible	223 005 A ² ·s
• of the gG fuse at 690 V maximum permissible	226 005 A ² ·s
• of the gG/aM SITOR fuse at 1000 V maximum permissible	48 000 A ² ·s
• of the molded case circuit breaker at 415 V maximum permissible	560 000 A ² ·s
position of the switch operating mechanism	at the left end
overvoltage in percent relative to the operating voltage at AC at 400, 500, 690 V at 50/60 Hz	10 %
overvoltage category	III
degree of pollution	3
Voltage	
operating voltage with current paths in series	
• with degree of pollution 2 at DC rated value	440 V / 3
• with degree of pollution 3 at DC rated value	440 V / 3
insulation voltage	
• rated value	1 000 V
surge voltage resistance rated value	8 kV
operational current at AC-22 A at 1000 V maximum	125 A
let-through current of the fuse at 500 V maximum permissible	25 700 A

let-through current of the gG fuse at 690 V maximum permissible	29 500 A
Supply voltage	
operating voltage at AC rated value	1 000 V
Protection class	
protection class IP	IP20
protection class IP	
• with closed switch with cover or cable lug cover	IP20
• on the front	IP20
Dissipation	
power loss [W]	
• with conventional rated thermal current per pole	3.2 W
• with conventional rated thermal current per device	12.8 W
• for rated value of the current at AC in hot operating state per pole	3.2 W
Main circuit	
operating power	
• at AC-23 A at 500 V rated value	75 kW
operational current rated value	125 A
Auxiliary circuit	
number of connected NC contacts for auxiliary contacts	0
number of connected NO contacts for auxiliary contacts	0
number of connected CO contacts for auxiliary contacts	0
number of CO contacts for auxiliary contacts	4
number of NC contacts for auxiliary contacts	0
number of NO contacts for auxiliary contacts	0
Suitability	
suitability for use main switch	Yes
suitability for use switch disconnecter	Yes
suitability for use EMERGENCY OFF switch	No
suitability for use safety switch	Yes
suitability for use according to IEC 62626-1 safety switch	No
suitability for use maintenance/repair switch	Yes
Product details	
product feature interlock	Yes
product component	
• trip indicator	No
• voltage trigger	No
• undervoltage release	No
• undervoltage release with leading contact	No
product extension auxiliary switch	Yes
product extension optional motor drive	No
product extension optional voltage trigger	No
Short circuit	
short-time withstand current (I _{cw}) at 1000 V AC/440 V DC limited to 1 s rated value	4 kA
short-circuit current making capacity (I _{cm}) for switch disconnecter	
• at 400 V AC without fuse link rated value minimum	30 kA
• at 1000 V AC without fuse link rated value minimum	12 kA
• at DC 440 V without fuse link rated value minimum	12 kA
• without fuse link rated value minimum	12 kA
conditional short-circuit current with line-side fuse protection	
• at 415 V by molded case circuit breaker rated value	65 kA
• at 500 V by gG fuse rated value	100 kA
• at 690 V by gG fuse rated value	100 kA
Connections	
type of connectable conductor cross-sections with flexible busbar	3x (0.8x14 mm ²)

type of connectable conductor cross-sections • for copper busbar	'1 x (3 x 14 mm ²)
type of connectable conductor cross-sections for copper conductor • solid • finely stranded with core end processing • stranded	1x (2.5 ... 16 mm ²) 1x (2.5 ... 70 mm ²) 1x (10 ... 70 mm ²)
type of electrical connection for main current circuit	box terminal

Mechanical Design

height	126 mm
width	148 mm
depth	97 mm
fastening method	Screw fixing and standard rail mounting 35 mm
fastening method • 4-hole front mounting • front mounting with central attachment • rail mounting	No No Yes
mounting position	any
Net Weight	1.439 kg

Environmental conditions

ambient temperature during operation • minimum • maximum	-25 °C 70 °C
ambient temperature during storage • minimum • maximum	-50 °C 80 °C

Certificates

reference code according to IEC 81346-2	Q
--	---

Approvals Certificates

General Product Approval



[Confirmation](#)



[Miscellaneous](#)

General Product Approval	Test Certificates	Maritime application	other
---------------------------------	--------------------------	-----------------------------	--------------



[Type Test Certificates/Test Report](#)



[Miscellaneous](#)

other	Environment
--------------	--------------------

[Confirmation](#)

[Environmental Confirmations](#)

[Environmental Confirmations](#)

Further information

Information on the packaging

<https://support.industry.siemens.com/cs/ww/en/view/109813875>

Information for data generation and storage

<https://support.industry.siemens.com/cs/ww/en/view/109995012>

Information- and Downloadcenter (Catalogs, Brochures,...)

<https://www.siemens.com/lowvoltage/catalogs>

Industry Mall (Online ordering system)

<https://mall.industry.siemens.com/mall/en/en/Catalog/product?mlfb=3KD3242-2NE10-0>

Service&Support (Manuals, Certificates, Characteristics, FAQs,...)

<https://support.industry.siemens.com/cs/ww/en/ps/3KD3242-2NE10-0>

Image database (product images, 2D dimension drawings, 3D models, device circuit diagrams, ...)

https://www.automation.siemens.com/bilddb/cax_en.aspx?mlfb=3KD3242-2NE10-0

CAX-Online-Generator

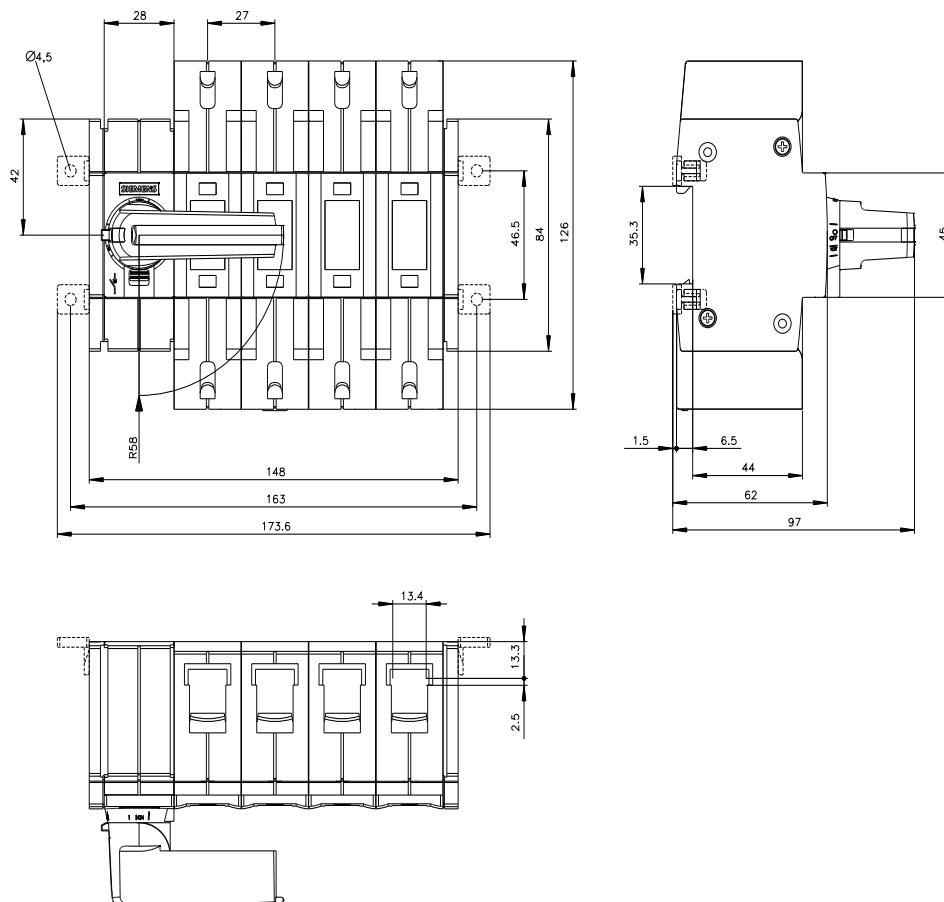
<https://www.siemens.com/cax>

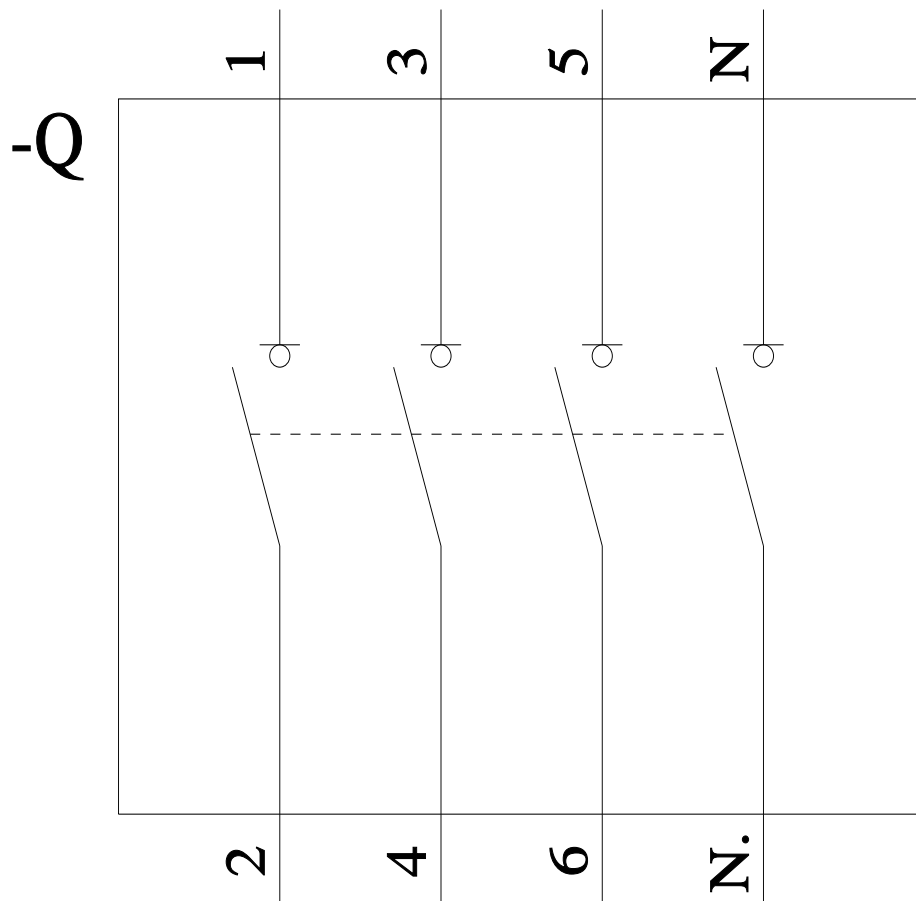
Tender specifications

<https://www.siemens.com/specifications>

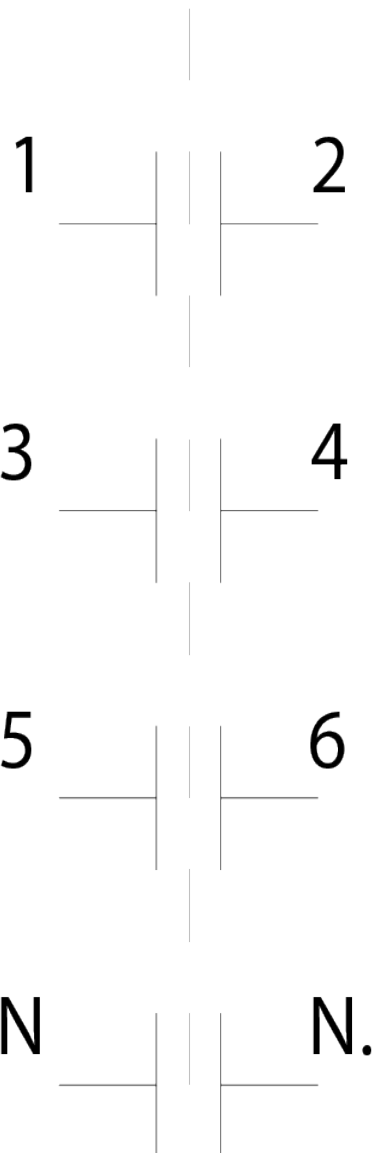
Characteristic curves

https://curves.simaris.siemens.com/curves/<mmp_prod_noCOMP='HAUPT'></mmp_prod_no>





-CR



last modified:

7/9/2025 