



PRESCRIPTION

PATIENT ACCESS

PREPARATION

APPLICATION

DISCHARGE
MANAGEMENT

compact^{plus}
TIME TO CARE

Infusomat® and Perfusor® compact^{plus}

Time to Care



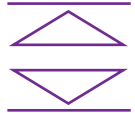
COLOUR
DISPLAY



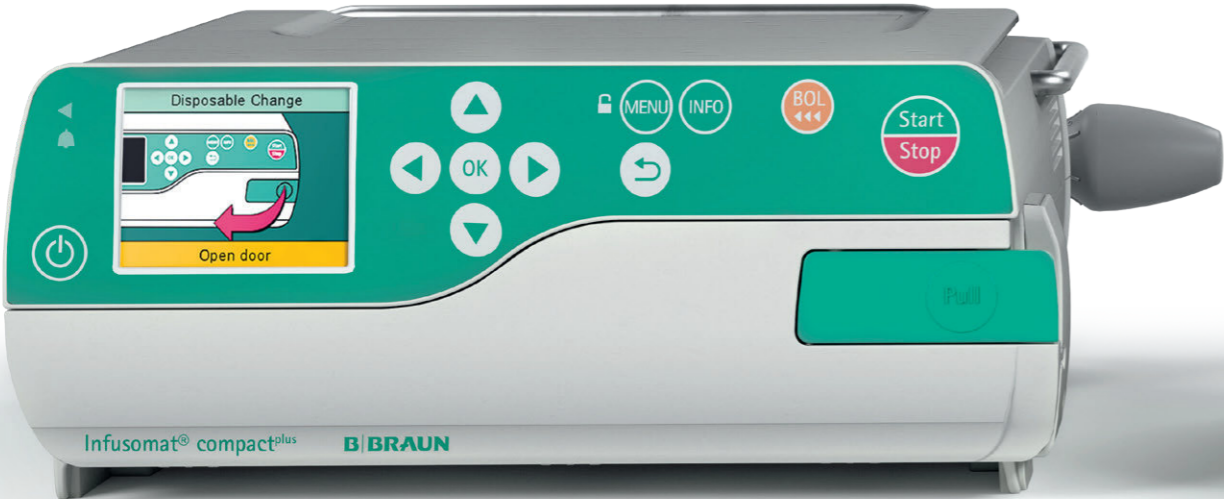
GUIDED
LOADING



INTUITIVE
HANDLING



B. BRAUN
DOSEGUARD™



QUICK
TO LEARN



FAST
STARTUP



HIGH
ACCURACY



LI-ION-
BATTERY



INTEGRATED
POWER SUPPLY



INBUILT
HANDLE



ROBUST
DESIGN



IP34 FLUID
PROTECTION

Perfusor® compact^{plus}

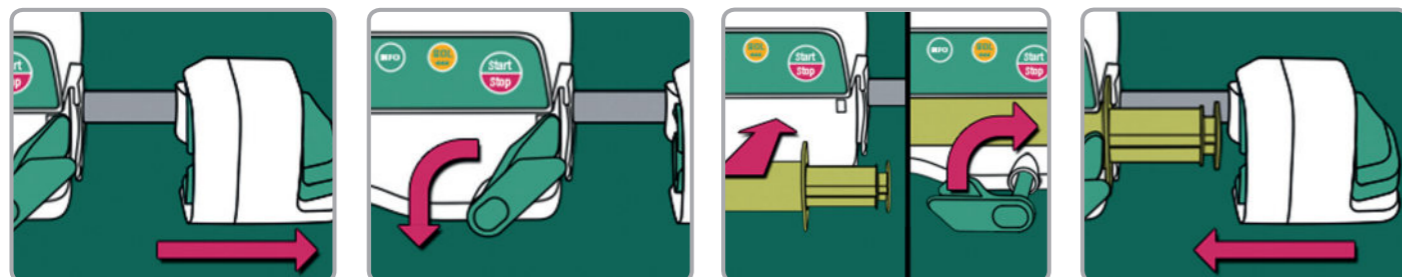
Release Time to Care



Flexibility
Modular system for advanced and easy transport.

Graphical user interface
Intuitive operation and guided loading reduces training needs.

Syringe loading
Fast loading and start-up with improved safety due to semi-automatic drive.



COLOUR
DISPLAY



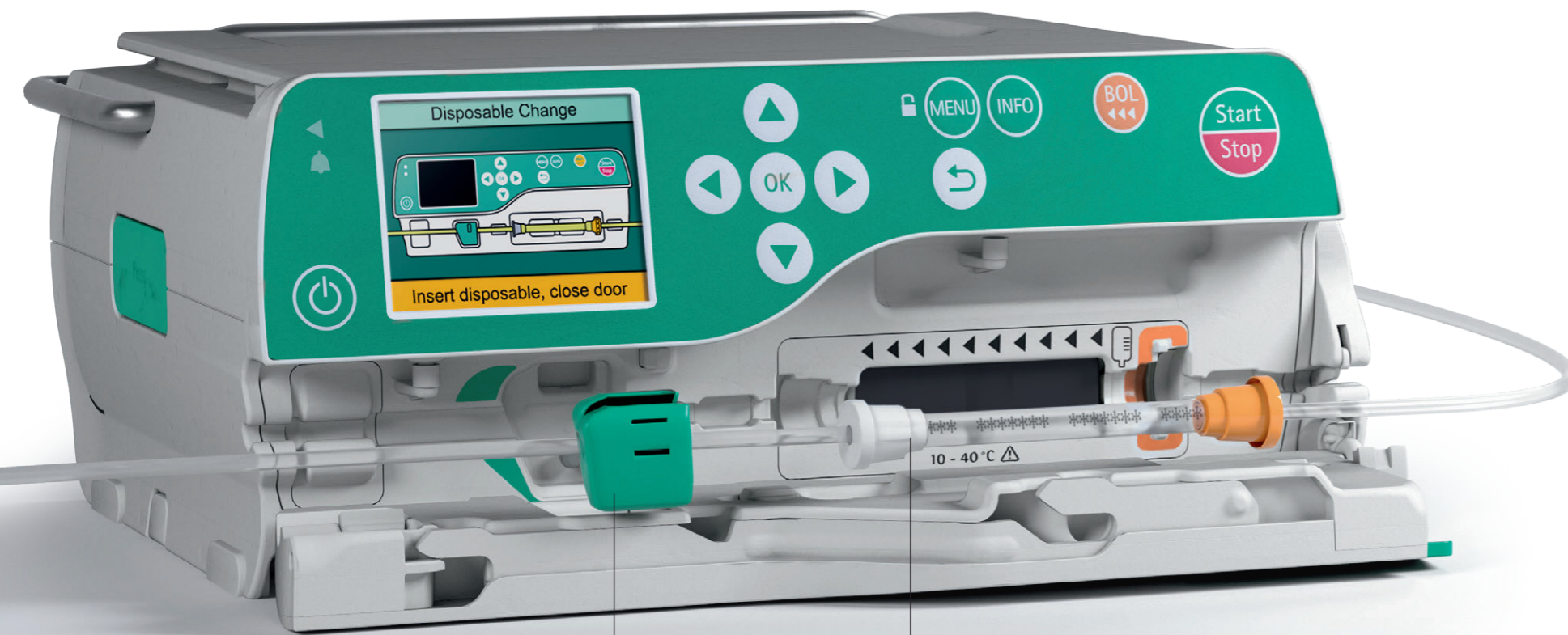
GUIDED
LOADING



INTUITIVE
HANDLING

Infusomat[®] compact^{plus}

Release Time to Care



Anti Free-Flow Clamp

The Anti Free-Flow Clamp automatically closes the line to prevent any risk of free-flow when the door is opened.

Infusomat^{plus} Line

Colour codes and shapes make line insertion easy. Dedicated tubing material allows continued accuracy over long periods (96h).



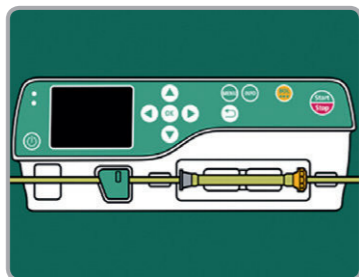
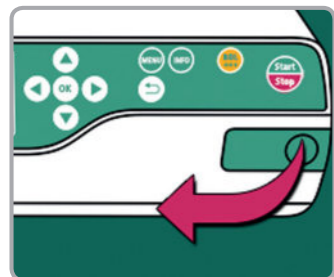
AirStop

A hydrophilic airtight membrane triggers the upstream sensor to stop the infusion. It reduces patient disconnections and potential infections risk.

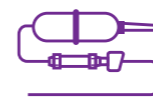


PrimeStop

A protective cap lined with a hydrophobic membrane stops fluid leaking and helps to protect against contamination.



NUTRITION
THERAPY



INFUSOMAT^{PLUS}
SAFESET



COLOUR
DISPLAY



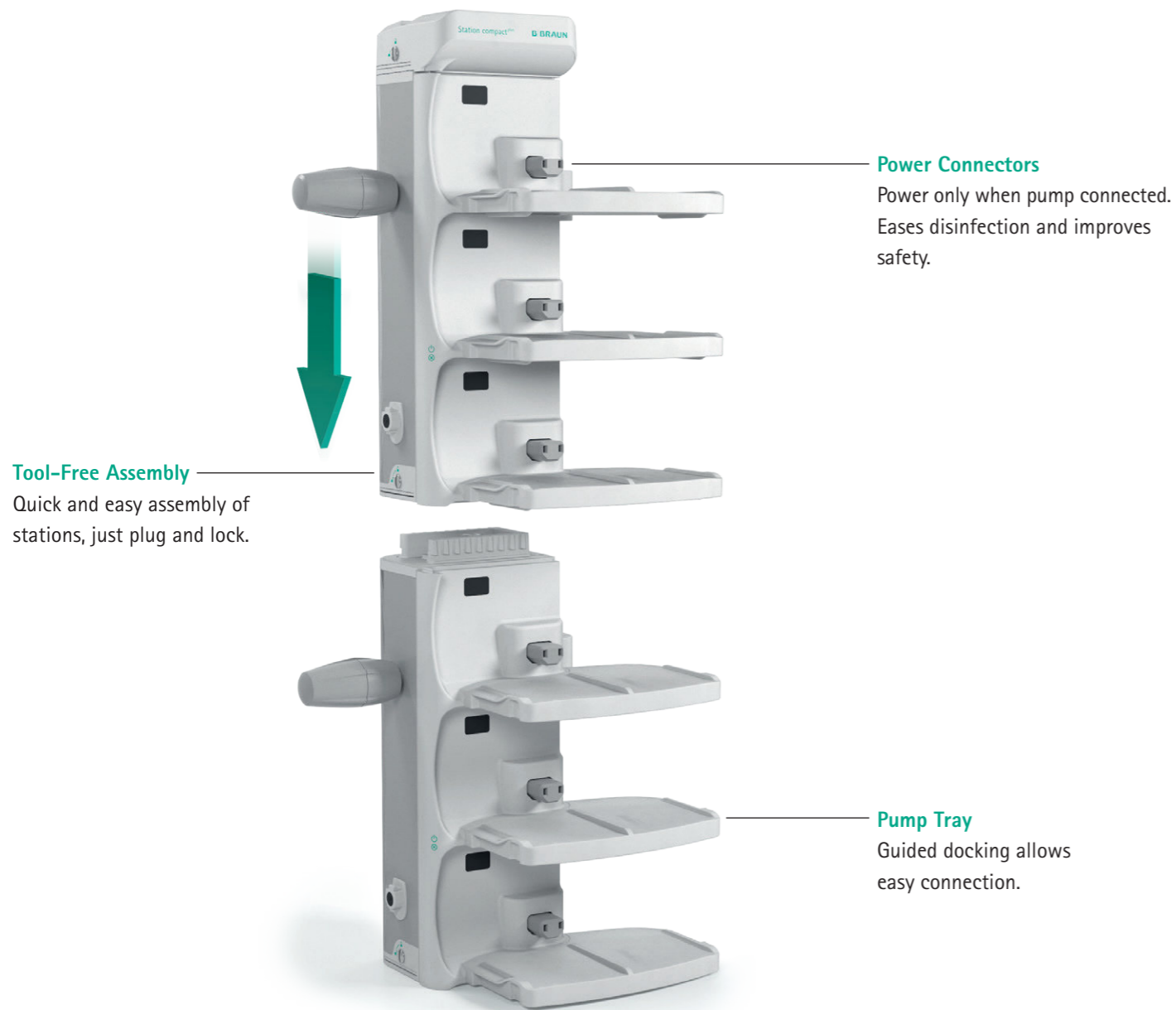
GUIDED
LOADING



INTUITIVE
HANDLING

Advanced Workflow

Saving Time to Care



GUIDED
DOCKING



INTELLIGENT
POWER

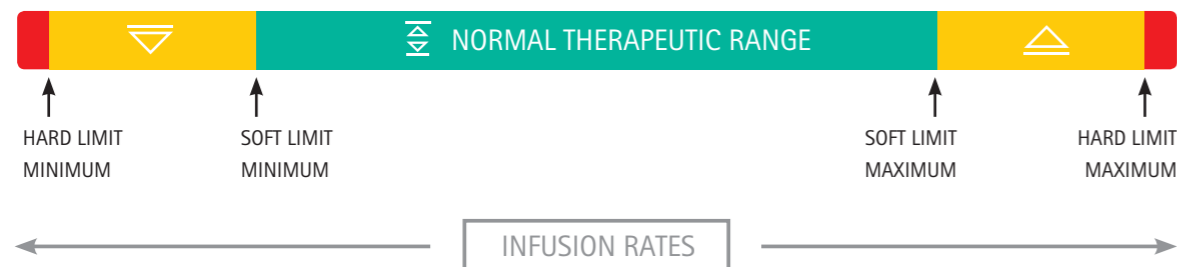
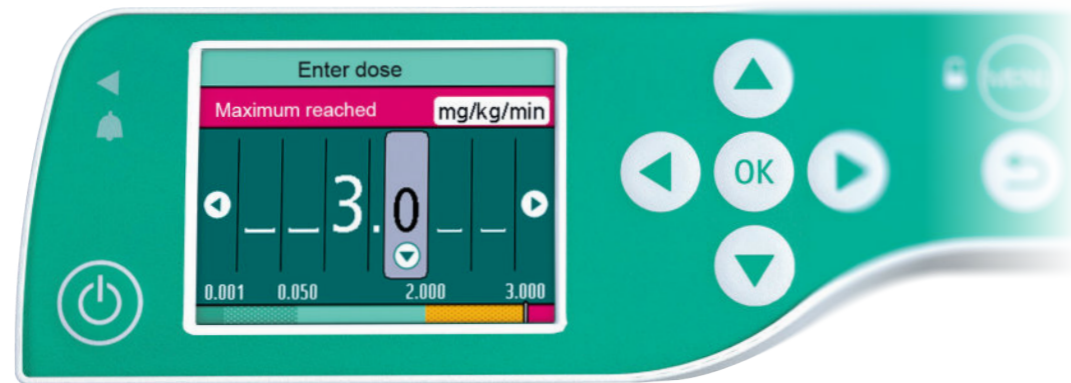
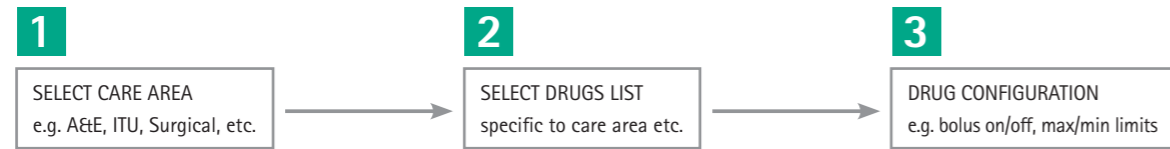


TOOL-FREE
ASSEMBLY



ETHERNET
CONNECTION

Dose Error Reduction System (DERS) Time to Care

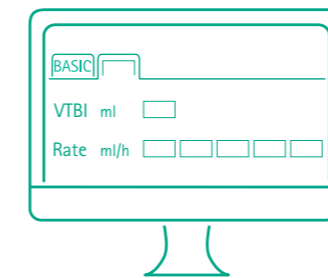


B. Braun DoseGuard™ – Dose Error Reduction System (DERS)

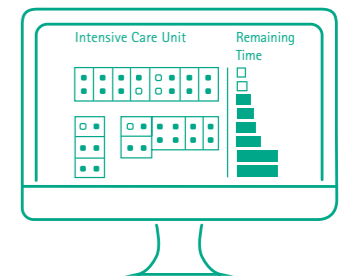
- more than 3,000 drugs
- specific care units
- 30 categories



B. Braun OnlineSuite For Innovative Solutions



Drug Library Manager
Central administration of therapy settings.



OneView
Increased efficiency due to centralized therapy data overview.

OnlineSuite – Rethinking Infusion Therapy

- one platform offering several applications
- easy to integrate in hospital networks
- drug library always up to date:
 - update in seconds via network or WiFi
 - update with USB



Upload Manager

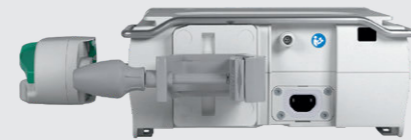
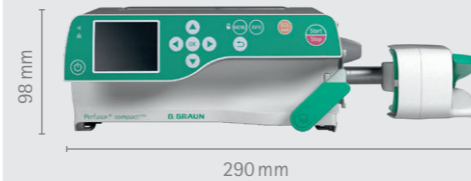
Centralized upload via the clinical network allows always up to date drug library and device configuration.



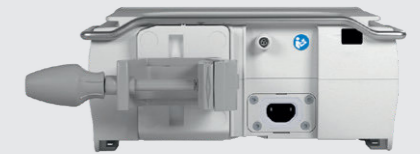
**B. BRAUN
ONLINESUITE**

Technical Data

Perfusor® compact ^{plus}	Description
Type	Infusion syringe pump
Dimension	290x98x220 mm (WxHxD)
Weight	2.3 kg
Moisture	IP34 (water splashing from any direction)
Display	Colour active matrix 2.4" TFT, 240 x 320 pixels, 262k colours, viewing angle: all 80°
Battery	Rechargeable Li-Ion battery Operating time: approx. 10h at 5 ml/h Recharging time: approx. 3h
Basal Rates	0.01 - 999.9 ml/h
Accuracy	± 2% in compliance with IEC/EN 60601-2-24
Bolus Rates	Delivery rate 1 - 1,800 ml/h
Supported Syringe Manufacturer	B. Braun Original Perfusor® Syringe, Omnifix®, BD, Terumo Sizes: 2/3, 5, 10, 20, 30, 50/60 ml
Drug Library	3,000 drugs including all parameters in up to 30 drug categories
Code no. (REF)	8717030



Infusomat® compact ^{plus}	Description
Type	Volumetric infusion pump
Dimension	229x98x220 mm (WxHxD)
Weight	1.9 kg
Moisture	IP34 (water splashing from any direction)
Display	Colour active matrix 2.4" TFT, 240 x 320 pixels, 262k colours, viewing angle: all 80°
Battery	Rechargeable Li-Ion battery Operating time: approx. 6h at 25 ml/h Recharging time: approx. 3h
Basal Rates	0.1 - 1,200 ml/h
Accuracy	± 5% over 96 h
Bolus Rates	Delivery rate 1 - 1,200 ml/h
Supported Infusion Line	Infusomat ^{plus} Line
Drug Library	3,000 drugs including all parameters in up to 30 drug categories
Code no. (REF)	8717050




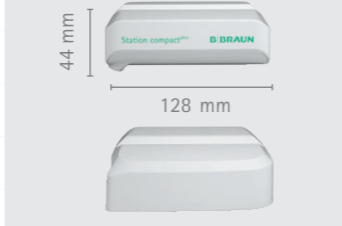
CLEANING AND DISINFECTION

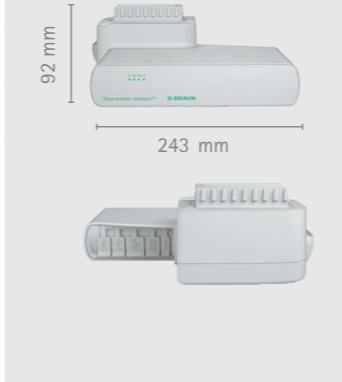
Group	
Alcohols <ul style="list-style-type: none"> Meliseptol® New Formula Meliseptol® rapid Meliseptol® HBV Tissues Meliseptol® Foam pure Meliseptol® Wipes sensitive Softa® Cloth CHX 2% 	Quaternary ammonium compounds <ul style="list-style-type: none"> Hexaquart® forte Hexaquart® plus Hexaquart® plus lemon fresh Hexaquart® S
Aldehydes <ul style="list-style-type: none"> Melsept® SF Melsitt® 	Active chlorine
Acid	Phenols
	Peroxides
	Alkylamines

The above listed groups of cleaners are approved under consideration of the normal disinfection procedure according to the manufacturers' recommendation.

Technical Data

Station compact ^{plus}	Description	
Type	Docking station for up to 3 infusion pumps	
Dimension	305x375x202 mm (WxHxD)	
Weight	3.3 kg	
Moisture	IP34 (water splashing from any direction)	
Configuration	Tool-free assembly of up to 6 Station compact ^{plus} (max. 18 infusion pumps) in one or two pillars.	
Interface Type	- Infrared - Staff call	
Accessory	Fixation for wall railing systems and pole systems	
Pole Clamp	For vertical mounting with integrated over-twist protection	
Code no. (REF)	8717141	

Cover compact ^{plus}	Description	
Type	Cover for Station compact ^{plus}	
Dimension	128x44x124 mm (WxHxD)	
Weight	0.25 kg	
Moisture	IP34 (water splashing from any direction)	
Code no. (REF)	8717145	

Data module compact ^{plus*}	Description	
Type	Data module for Station compact ^{plus}	
Dimension	243x92x235 mm (WxHxD)	
Weight	1.1 kg	
Moisture	IP34 (water splashing from any direction)	
Interface Type	Data communication can be optionally integrated into a Station compact ^{plus} and allows data communication for up to 18 infusion pumps. Interfaces: Ethernet, 2 x USB, WiFi, HDMI, Mini DIN 9	
Code no. (REF)	8717160	

* The Data module compact^{plus} will be available in late 2018

Accessories

Product	Description	Code no. (REF)
Universal Station Clamp	Clamp for fixation to wall rails and IV poles	8717142
Connection lead 12V	Connection lead for on-board 12V supply	8718020
Staff call cable compact ^{plus}	Staff call cable for Pump compact ^{plus}	8718030
Staff call cable	Staff call cable for Station compact ^{plus}	8718031
Pillar connection cable 60 cm	Connection cable to connect two pillars 60 cm	8718060
Pillar connection cable 120 cm	Connection cable to connect two pillars 120 cm	8718061
Pillar connection cable 1,000 cm	Connection cable to connect two pillars 1,000 cm	8718062

We developed our process concept to optimize workflows and enhance transparency. We have identified five constitutive stages of infusion, and we suggest products and services that are aligned with each process step.

As they all come from a single source, they are optimized for one another. We are thus creating advanced system solutions at every step. Join us in raising the bar in infusion therapy.

