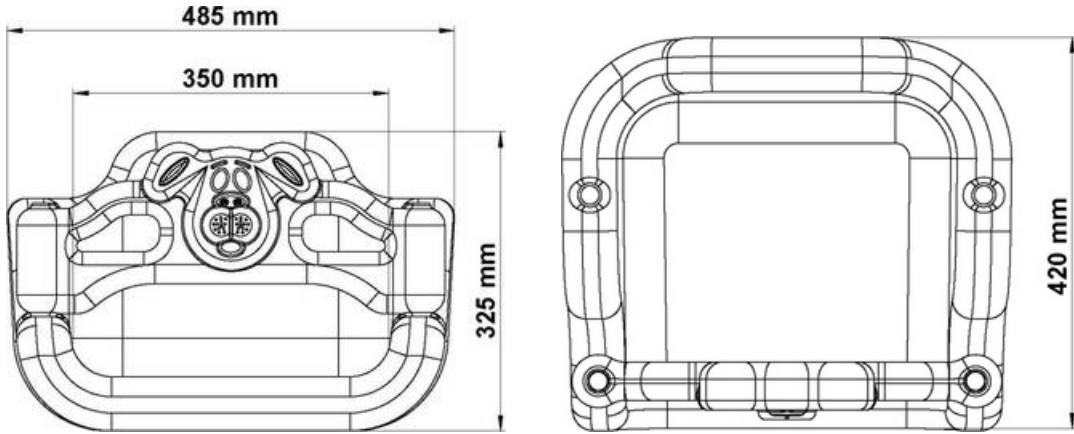


SWING SEAT WITH CHAIN



GALAEEXPORT MÜHENDİSLİK
İNŞ. DIŞ TİC. SAN. LTD. ŞTİ.
Fevziçakmak Mh. Yayın Cd.No: 18
Karatay KONYA
Selçuk Vergi Dairesi 388 181 3955

A. The swing seat should be closed on 3 sides and have a front protection belt for safety. The chains shall be 6 mm caliber dip galvanized. The swing seat and chains will comply with TSE safety norms. The swing seat and railing of the chair will be produced with double walls made of self- colored polyethylene material. The rear seats must be single and there must be a protection belt with an animal figure. The swing seat must be manufactured in such a way that its width and length are 48.5x42 cm and its height is at least 32.5 cm.

The width of the living area is min. it should be 35 cm.

Shock-absorbing rubber should be provided in the front part of the swing seat for safety against impact.

The bracket must weigh a minimum of 3.5 kg along with the swing railing.

According to TS EN 1176-2 / 04.02.2010 It is mandatory to have the expression "POLYETHYLENE" within the scope of the Document. The dyestuffs used in coloring will be in accordance with the children's health and food regulations.