



Cat[®]

216B Series 3

SKID STEER LOADER

FEATURES:

The Cat[®] 216B Series 3 Skid Steer Loader, with its radial lift design, delivers excellent digging performance with outstanding drawbar power. The 216B Series 3 features the following:

- **Ergonomic operator station** features easy to use pilot operated joystick controls for reduced operator fatigue and increased productivity.
- **High performance power train** provides high engine horsepower and torque, allowing part-throttle operation for lower sound levels and fuel consumption.

- **Advanced hydraulic system** is designed for maximum power and reliability.
- **Easy routine maintenance** helps reduce machine downtime for greater productivity.
- **Broad range of performance matched Cat[®] Work Tools** make the Cat Skid Steer Loader the most versatile machine on the jobsite.

Specifications

Engine

Engine Model	Cat [®] C2.2	
Gross Power SAE J1995	38 kW	51 hp
Net Power SAE 1349/ISO 9249	35 kW	47 hp
Displacement	2.2 L	134 in ³
Stroke	100 mm	3.9 in
Bore	84 mm	3.3 in

Weights*

Operating Weight	2581 kg	5,690 lb
------------------	---------	----------

Power Train

Travel Speed (Forward or Reverse)	12.7 km/h	7.9 mph
-----------------------------------	-----------	---------

Hydraulic System

Hydraulic Flow – Standard:		
Loader Hydraulic Pressure	23 000 kPa	3,335 psi
Loader Hydraulic Flow	61 L/min	16 gal/min
Hydraulic Power (calculated)	23.2 kW	31.1 hp

* Operating Weight, Operating Specifications and Dimensions all based on 75 kg (165 lb) operator, all fluids, OROPS, 1524 mm (60 in) dirt bucket, Cat 10x16.5 tires, no optional counterweights and manual quick coupler (unless otherwise noted).

Operating Specifications*

Rated Operating Capacity	635 kg	1,400 lb
Rated Operating Capacity with Optional Counterweight	680 kg	1,500 lb
Tipping Load	1270 kg	2,800 lb
Breakout Force, Tilt Cylinder	1852 kg	4,083 lb

Cab

ROPS	SAE J1040 MAY94, ISO 3471:1994
FOPS	SAE J/ISO 3449 APR98 Level I, ISO 3449:1992 Level I
FOPS Level II	SAE J/ISO 3449 APR98 Level II, ISO 3449:1992 Level II (optional)

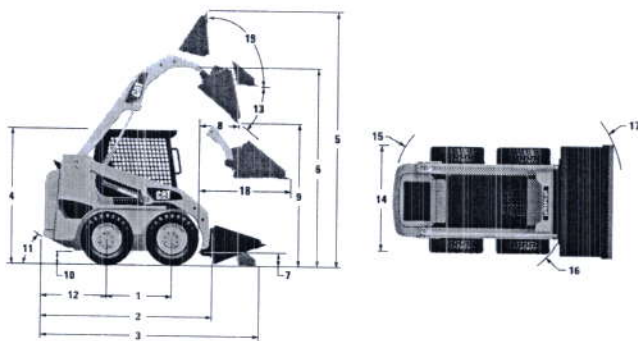
Service Refill Capacities

Chain Box, each side	6 L	1.6 gal
Cooling System	10 L	2.6 gal
Engine Crankcase	10 L	2.6 gal
Fuel Tank	58 L	15.4 gal
Hydraulic System	55 L	14.5 gal
Hydraulic Tank	35 L	9.2 gal



CATERPILLAR[®]

216B Series 3 Skid Steer Loader



Dimensions*

1 Wheelbase	986 mm	39 in
2 Length w/o Bucket	2519 mm	99 in
3 Length w/Bucket on Ground	3233 mm	127 in
4 Height to Top of Cab	1950 mm	77 in
5 Maximum Overall Height	3709 mm	146 in
6 Bucket Pin Height at Maximum Lift	2854 mm	112 in
7 Bucket Pin Height at Carry Position	200 mm	8 in
8 Reach at Maximum Lift and Dump	505 mm	20 in
9 Clearance at Maximum Lift and Dump	2169 mm	85.4 in
10 Ground Clearance	195 mm	8 in
11 Departure Angle	26°	
12 Bumper Overhang Behind Rear Axle	967 mm	38 in
13 Maximum Dump Angle	40°	
14 Vehicle Width over Tires	1525 mm	60 in
15 Turning Radius from Center – Machine Rear	1502 mm	59 in
16 Turning Radius from Center – Coupler	1195 mm	47 in
17 Turning Radius from Center – Bucket	1944 mm	77 in
18 Maximum Reach w/Arms Parallel to Ground	1291 mm	51 in
19 Rack Back Angle at Maximum Height	81°	

MANDATORY EQUIPMENT

- Quick Coupler, Mechanical or Hydraulic
- Seat Belt, 50 mm (2 in) or 75 mm (3 in)
- EU Preparation Package (Europe only)

COMFORT PACKAGE (must select one of the following)

- Open ROPS (C0): *Static Seat*
- Open ROPS (C1): *Suspension Seat, Deluxe Headliner*
- Enclosed ROPS (C2): *C1 + Heater, Cab Door, Side Windows, Cup Holder, Cab Debris Barrier*

CONTROL PACKAGE (must select one of the following)

- Control Package 1: *On/Off Auxiliary Hydraulics Basic*
- Control Package 2: *Proportional Auxiliary Hydraulics Deluxe*
- Control Package 3: *Proportional Auxiliary Hydraulics Deluxe, Work Tool Harness*

STANDARD EQUIPMENT

ELECTRICAL

- 12 volt Electrical System
- 65 ampere Alternator
- Automatic Glow Plug Activation
- Ignition Key Start/Stop Switch
- Lights: *Gauge Backlighting, Two Rear Tail Lights, Two Adjustable Front and Rear Halogen Lights, Dome Light*

OPERATOR ENVIRONMENT

- Gauges: *Fuel Level, Hour Meter*
- Operator Warning System Indicators: *Air Filter Restriction, Alternator Output, Armrest Raised/Operator Out of Seat, Engine Coolant Temperature, Engine Oil Pressure, Glow Plug Activation, Hydraulic Filter Restriction, Hydraulic Oil Temperature, Parking Brake Engaged*
- Vinyl Seat
- Pull Down Ergonomic Contoured Armrest
- Control Interlock System, when operator leaves seat or armrest raised: *Hydraulic System Disables, Hydrostatic Transmission Disables, Parking Brake Engages*
- ROPS Cab, Open, Tilt Up
- FOPS, Level I
- Top and Rear Windows
- Floor Mat
- Interior Rear View Mirror
- 12 volt Electric Socket
- Horn
- Backup Alarm

POWER TRAIN

- Cat® C2.2 Tier 4 Interim/Stage IIIA Compliant Diesel Engine
- Air Cleaner, Dual Element, Radial Seal
- S-O-S™ Sampling Valve, Hydraulic Oil
- Filters: Spin on, Hydraulic
- Filters: Bayonet-type, Fuel and Water Separator
- Tilt Up Radiator/Hydraulic Oil Cooler
- Muffler, Standard
- Spring Applied, Hydraulically Released Parking Brakes
- Hydrostatic Transmission
- Four Wheel Chain Drive

OTHER

- Engine Enclosure, Lockable
- Extended Life Antifreeze, -36° C (-33° F)
- Machine Tie Down Points (4)
- Support, Lift Arm
- Hydraulic Oil Level Sight Gauge
- Radiator Coolant Level Sight Gauge
- Radiator, Expansion Bottle
- Cat® ToughGuard™ Hose
- Auxiliary, Hydraulics, Continuous Flow
- Heavy Duty, Flat Faced Quick Disconnects
- Split D-Ring to Route Work Tool Hoses Along Side of Left Lift Arm
- Electrical Outlet, Beacon
- Belly Pan Cleanout

OPTIONAL ATTACHMENTS

- Counterweight, increases rated operating capacity 45 kg (100 lb)
- Variable Speed Demand Fan (not available in all regions)
- Beacon, Rotating
- Engine Block Heater – 120V or 240V
- Oil, Hydraulic, Cold Operation
- Paint, Custom
- Heavy Duty Battery, 880 CCA

For more complete information on Cat products, dealer services, and industry solutions, visit us on the web at www.cat.com

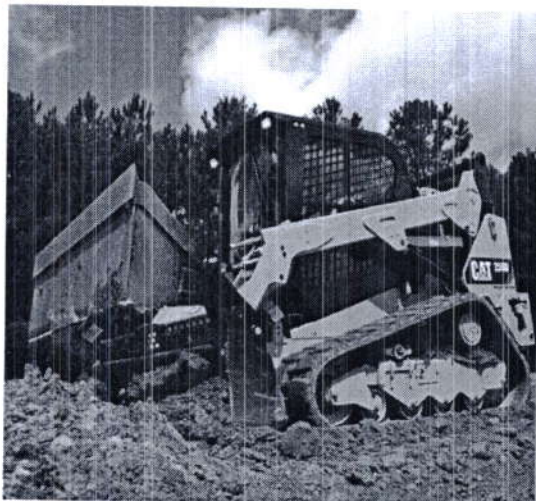
AEHQ6103 (5-10)

© 2010 Caterpillar
All Rights Reserved
Printed in U.S.A.

Materials and specifications are subject to change without notice. Featured machines in photos may include additional equipment. See your Caterpillar dealer for available options.

CAT, CATERPILLAR, SAFETY.CAT.COM, their respective logos, "Caterpillar Yellow" and the "Power Edge" trade dress, as well as corporate and product identity used herein, are trademarks of Caterpillar and may not be used without permission.

CATERPILLAR®



Cat® Buckets and Forks

SKID STEER LOADERS
MULTI TERRAIN LOADERS
COMPACT TRACK LOADERS

Cat® buckets and pallet forks are designed to provide superior productivity, high reliability and long life in a variety of materials and handling conditions. Rugged Cat buckets for skid steer loaders, multi terrain loaders and compact track loaders include General Purpose, Low Profile, Utility, Light Material, and Multi Purpose. Caterpillar also offers pallet forks for optimal machine versatility.

Features:

Performance and versatility

- The formed back wrapper design enhances bucket loadability and production in a wide variety of applications. The optimum wrapper angle and lack of sharp corners promote superior bucket fill and reduce material packing for productivity. The notched rail-type pallet fork carriage design allows fork tines to be easily respaced or changed and locked in place. Cat Ground Engaging Tools (G.E.T.) and fork tine options can provide added performance and flexibility.

Cat Ground Engaging Tools (G.E.T.)

- Cat G.E.T. protect bucket edges, increase durability and extend bucket wear life in a variety of applications.

- Single strap bolt-on uniteeth provide maximum penetration for aggressive digging. They provide a smooth bucket bottom for work on prepared surfaces, quick change versatility, reduced downtime and excellent wear life.
- Bolt-on cutting edges are recommended for bucket base edge protection in high wear conditions where teeth are not required. Made from tough DH-2™ hardened steel, they extend edge wear life when working on hard surfaces.
- Bolt-on tooth bars quickly convert a bucket into an aggressive digging tool. Uniteeth are welded to a protective edge that fits over the existing bucket base edge and is secured to the bucket side plates.

Quick coupler

- Rugged, opposing edge design holds the work tool securely and allows the operator to quickly change from one high performance Cat Work Tool to another.

Compatibility

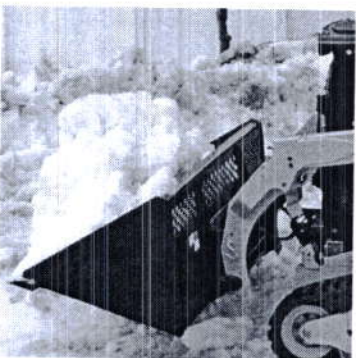
Model	Machines
Buckets and Forks	216B3, 226D, 232D, 236D, 239D, 242D, 246D, 249D, 257D, 259D, 262D, 272D2, 272D2 XHP, 277D, 279D, 287D, 289D, 297D2, 297D2 XHP

Machine model availability and attachment vary by region. Please contact your local dealer for availability.



Cat® Buckets and Forks

Buckets



Cat buckets are designed to optimize machine performance when digging, loading, carrying, leveling, grading and dumping in a variety of applications.

Features:

General Purpose Buckets

- Ideal for digging, loading, carrying, leveling, grading and dumping in agricultural, industrial and rental applications.

Low Profile Buckets

- Recommended for applications with tight areas where a narrower, lower capacity bucket is required, such as construction and landscaping.

Utility Buckets

- Higher capacity buckets, designed with a taller back height profile, longer floor length and dual angled side plates for applications handling lower density materials, such as mulch, dry topsoil, livestock feed and waste in agricultural and landscaping settings.

Light Material Buckets

- Ideal for loading, carrying, dumping and handling light, loosely packed material, such as grain, mulch, hay, wood chips, fertilizer and snow, in agricultural and landscaping applications.

Material Handling Buckets

- Highest capacity buckets, designed with honeycomb hole pattern which allows direct visibility to the bucket cutting edge. Excellent for light density material movement such as snow, hay, and mulch.
- Available bolt-on serrated cutting edge improves bucket's ability to break up hard packed snow and ice in snow removal applications.

Multi Purpose Buckets

- Ideal for digging, dozing, clamping, back dragging, grading and leveling in construction, landscaping, industrial and demolition applications.
- Available spill guard improves material retention and protects coupler from material spills while continuing to provide excellent cutting edge visibility.

Specifications – General Purpose Buckets

Width*	mm (in)	1524 (60)	1676 (66)	1829 (72)	1981 (78)	2134 (84)
Rated bucket capacity**	m ³ (ft ³)	0.36 (12.7)	0.4 (14.0)	0.44 (15.4)	0.48 (16.7)	0.63 (22.2)
	m ³ (yd ³)	0.36 (0.47)	0.4 (0.52)	0.44 (0.57)	0.48 (0.62)	0.63 (0.82)
Weight***	kg (lb)	173 (381)	221 (487)	234 (516)	247 (545)	285 (628)
Base edge thickness	mm (in)	19 (0.75)	19 (0.75)	19 (0.75)	19 (0.75)	19 (0.75)

* Measured from inside of side plate to inside of side plate; overall width is approximately 50 mm (2 in) wider.

** Rated capacities are heaped per ISO 7546:1983 and SAE J742 FEB85.

*** With base cutting edge only, without ground engaging tools.

Specifications – Low Profile Buckets

Width*	mm (in)	1372 (54)	1524 (60)	1676 (66)	1829 (72)	1981 (78)
Rated bucket capacity**	m ³ (ft ³)	0.30 (10.5)	0.34 (11.9)	0.37 (13.0)	0.41 (14.3)	0.44 (15.4)
	m ³ (yd ³)	0.30 (0.39)	0.34 (0.44)	0.37 (0.48)	0.41 (0.53)	0.44 (0.57)
Weight***	kg (lb)	157 (346)	174 (384)	199 (439)	212 (467)	226 (498)
Base edge thickness	mm (in)	16 (0.63)	19 (0.75)	19 (0.75)	19 (0.75)	19 (0.75)

* Measured from inside of side plate to inside of side plate; overall width is approximately 50 mm (2 in) wider.

** Rated capacities are heaped per ISO 7546:1983 and SAE J742 FEB85.

*** With base cutting edge only, without ground engaging tools.



Specifications – Utility Buckets

Width*	mm (in)	1524 (60)	1676 (66)	1829 (72)
Rated bucket capacity**	m ³ (ft ³)	0.43 (15.1)	0.48 (16.5)	0.52 (17.8)
	m ³ (yd ³)	0.43 (0.56)	0.48 (0.62)	0.52 (0.67)
Weight***	kg (lb)	209 (461)	224 (494)	238 (525)
Base edge thickness	mm (in)	19 (0.75)	19 (0.75)	19 (0.75)

* Measured from inside of side plate to inside of side plate; overall width is approximately 50 mm (2 in) wider.

** Rated capacities are heaped per ISO 7546:1983 and SAE J742 FEB85.

*** With base cutting edge only, without ground engaging tools.

Specifications – Light Material Buckets

Width*	mm (in)	1829 (72)	1981 (78)	2134 (84)	2438 (96)
Rated bucket capacity**	m ³ (ft ³)	0.69 (24.3)	0.75 (26.5)	0.83 (29.7)	0.93 (32.8)
	m ³ (yd ³)	0.69 (0.9)	0.75 (0.98)	0.83 (1.1)	0.93 (1.22)
Weight***	kg (lb)	266 (586)	280 (617)	296 (653)	325 (717)
Base edge thickness	mm (in)	19 (0.75)	19 (0.75)	19 (0.75)	19 (0.75)

* Measured from inside of side plate to inside of side plate; overall width is approximately 50 mm (2 in) wider.

** Rated capacities are heaped per ISO 7546:1983 and SAE J742 FEB85.

*** With base cutting edge only, without ground engaging tools.

Specifications – Material Handling Buckets

Width*	mm (in)	2134 (84)	2438 (96)	2591 (102)
Rated bucket capacity**	m ³ (ft ³)	1.07 (38.6)	1.24 (44.8)	1.33 (47.8)
	m ³ (yd ³)	1.07 (1.40)	1.24 (1.63)	1.33 (1.74)
Weight***	kg (lb)	371 (818)	408 (900)	426 (939)
Base edge thickness	mm (in)	19 (0.75)	19 (0.75)	19 (0.75)

* Measured from inside of side plate to inside of side plate; overall width is approximately 50 mm (2 in) wider.

** Rated capacities are heaped per ISO 7546:1983 and SAE J742 FEB85.

*** With base cutting edge only, without ground engaging tools.

Specifications – Multi Purpose Buckets

Width*	mm (in)	1524 (60)	1676 (66)	1829 (72)	1981 (78)	2134 (84)
Rated bucket capacity**	m ³ (ft ³)	0.3 (10.5)	0.34 (12.0)	0.37 (13.1)	0.40 (14.1)	0.43 (15.2)
	m ³ (yd ³)	0.3 (0.39)	0.34 (0.44)	0.37 (0.48)	0.40 (0.52)	0.43 (0.56)
Weight***	kg (lb)	383 (844)	407 (898)	432 (952)	456 (1,004)	480 (1,058)
Jaw opening	mm (in)	767 (30)	767 (30)	767 (30)	767 (30)	767 (30)
Clam angle (open)		89°	89°	89°	89°	89°
Base edge thickness	mm (in)	19 (0.75)	19 (0.75)	19 (0.75)	19 (0.75)	19 (0.75)

* Measured from inside of side plate to inside of side plate; overall width is approximately 50 mm (2 in) wider.

** Rated capacities are heaped per ISO 7546:1983 and SAE J742 FEB85.

*** With base cutting edge only, without ground engaging tools.



Cat® Buckets and Forks

Pallet Forks



Cat pallet forks are used for a variety of material handling needs, such as moving bulky or palletized materials on construction and industrial sites, handling bagged fertilizer and seed at landscaping and nursery sites, and similar jobs.

Features:

Notched rail-type carriage design

- Notched rail-type carriage design allows fork tines to be easily respaced or changed and locked into place. Forks are loaded onto the carriage using a central cut-out for quick and easy change-out.

Heavy-duty load backrest structure

- Heavy-duty load backrest structure is functional, durable and easy to see through. It provides operator protection from shifting loads, while maintaining excellent visibility to the fork tips.

Three fork tine lengths

- Three fork tine lengths are available for specific material handling requirements. All pallet forks are rated Class II.

Specifications

Fork tine lengths	mm	(in)	910	(36)	1070	(42)	1220	(48)
Carriage height	mm	(in)	934	(37)	934	(37)	934	(37)
Fork tine width	mm	(in)	100	(4)	100	(4)	100	(4)
Fork tine thickness	mm	(in)	40	(1.6)	40	(1.6)	40	(1.6)
Number of fork tines			2		2		2	
Carriage frame width	mm	(in)	1164	(46)	1164	(46)	1164	(46)
Carriage weight	kg	(lb)	96	(212)	96	(212)	96	(212)
Fork tine weight	kg	(lb)	39	(86)	44	(97)	48	(106)
Fork group weight*	kg	(lb)	189	(417)	199	(439)	209	(461)

* Carriage plus two fork tines



For more complete information on Cat products, dealer services, and industry solutions, visit us on the web at www.cat.com

© 2016 Caterpillar
All rights reserved

Materials and specifications are subject to change without notice. Featured machines in photos may include additional equipment. See your Cat dealer for available options.

CAT, CATERPILLAR, SAFETY.CAT.COM, their respective logos, "Caterpillar Yellow" and the "Power Edge" trade dress, as well as corporate and product identity used herein, are trademarks of Caterpillar and may not be used without permission.

AEHQ5849-05 (04-2016)
Replaces AEHQ5849-04

