



**SMALL AND
LARGE FRAGMENT
IMPLANTS & INSTRUMENTS**

Locking Implants



- **198** | 2.4mm Locking Compression Screw (Star Head)

MATERIAL - Titanium / Stainless Steel
 LENGTH - 10mm to 40mm (2mm Increment)



- **198V** | 2.4mm Variable Locking Compression Screw (Star Head)

MATERIAL - Titanium / Stainless Steel
 LENGTH - 10mm to 40mm (2mm Increment)



- **199** | 2.7mm Locking Compression Screw (Star Head)
- **165** | 2.7mm Locking Compression Screw

MATERIAL - Titanium / Stainless Steel
 LENGTH - 10mm to 44mm (2mm Increment)



- **200** | 3.5mm Locking Compression Screw (Star Head)

MATERIAL - Titanium / Stainless Steel
 LENGTH - 10mm to 50mm (2mm Increment)
 55mm to 80mm (5mm Increment)



- **146** | 3.5mm Locking Compression Screw

MATERIAL - Titanium / Stainless Steel
 LENGTH - 10mm to 40mm (2mm Increment)
 45mm to 90mm (5mm Increment)



- **147** | 4mm Locking Cancellous Screw (Short Thread)

MATERIAL - Titanium / Stainless Steel
 LENGTH - 14mm to 30mm (2mm Increment)
 35mm to 60mm (5mm Increment)



- **148** | 4mm Locking Cancellous Screw (Fully Thread)

MATERIAL - Titanium / Stainless Steel
 LENGTH - 14mm to 50mm (2mm Increment)
 55mm to 80mm (5mm Increment)



- **462** | 4mm Locking Cancellous Screw (Fully Thread) (Star Head)

MATERIAL - Titanium / Stainless Steel
 LENGTH - 14mm to 30mm (2mm Increment)
 35mm to 85mm (5mm Increment)



- **461** | 4.0mm Locking Cancellous Screw (Short Thread) (Star Head)

MATERIAL - Titanium / Stainless Steel
 LENGTH - 20mm to 30mm (2mm Increment)
 35mm to 55mm (5mm Increment)



- **177** | 3.5mm Locking Cancellous Screws (Fully Th.)

MATERIAL - Titanium / Stainless Steel
 LENGTH - 14mm to 40mm (2mm Increment)
 45mm to 60mm (5mm Increment)

Locking Implants



- **166** | Locking Volar Distal Radius Plate 2.7mm (Left & Right)

MATERIAL - Titanium / Stainless Steel
HOLES - 3, 4, 5, 6



- **168** | Locking XVA Volar Distal Radius Plate 2.7mm (Head 6 hole) Narrow (Left & Right)

MATERIAL - Titanium / Stainless Steel
HOLES - 2, 3, 4, 5, 6, 7, 8



- **168A** | Locking XVA Volar Distal Radius Plate 2.7mm (Head 6hole) (Left & Right)

MATERIAL - Titanium / Stainless Steel
HOLES - 2, 3, 4, 5, 6, 7, 8



- **168B** | Locking XVA Volar Distal Radius Plate 2.7mm (Head 7hole) (Left & Right)

MATERIAL - Titanium / Stainless Steel
HOLES - 2, 3, 4, 5, 6, 7, 8



- **168C** | Locking XVA Volar Distal Radius Plate 3.5mm (Head 6hole) (Left & Right)

MATERIAL - Titanium / Stainless Steel
HOLES - 2, 3, 4, 5, 6, 7, 8



- **181A** | Locking Distal Radius Volar Rim Plate 2.4mm/2.7mm (Head 6hole) (Left & Right)

MATERIAL - Titanium / Stainless Steel
HOLES - 3, 4, 5



- **181B** | Locking Distal Radius Volar Rim Plate 2.4mm/2.7mm (Head 7hole) (Left & Right)

MATERIAL - Titanium / Stainless Steel
HOLES - 3, 4, 5



- **187** | Locking Distal Radius Plate 2.7mm (Left & Right)

MATERIAL - Titanium / Stainless Steel
HOLES - 3, 5



• 188 | Locking Distal Radius Buttress Plate 2.7mm (Head 5hole) (Left & Right)

MATERIAL - Titanium / Stainless Steel
HOLES - 3



• 189 | Locking Distal Radius Plate 2.7mm Extra Articular (Head 5hole) (Left & Right)

MATERIAL - Titanium / Stainless Steel
HOLES - 3, 5



• 190 | Locking Distal Radius Plate 2.7mm Extra Articular (Head 4hole) (Left & Right)

MATERIAL - Titanium / Stainless Steel
HOLES - 3, 5



• 191 | Locking Distal Radius Plate 2.7mm Straight

MATERIAL - Titanium / Stainless Steel
HOLES - 5, 6



• 192 | Locking Distal Radius L Plate 2.7mm (Head 2hole) (Left & Right)

MATERIAL - Titanium / Stainless Steel
HOLES - 3, 4



• 193 | Locking Distal Radius L Plate 2.7mm (Head 3hole) (Left & Right)

MATERIAL - Titanium / Stainless Steel
HOLES - 3, 4



• 194 | Locking Distal Radius L Plate Oblique Angled 2.7mm (Head 3hole) (Left & Right)

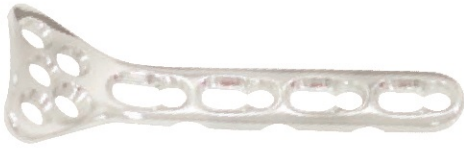
MATERIAL - Titanium / Stainless Steel
HOLES - 3, 4



• 195 | Locking Distal Radius T Plate 2.7mm (Head 3hole)

MATERIAL - Titanium / Stainless Steel
HOLES - 3, 4

Locking Implants



• 172 | Locking Proximal Radius Neck Plate 2.7mm

MATERIAL - Titanium / Stainless Steel
HOLES - 2, 3, 4



• 173 | Locking Proximal Radius Rim Plate 2.7mm (Left & Right)

MATERIAL - Titanium / Stainless Steel
HOLES - 2, 3, 4



• 149 | Small Locking Compression Plate 3.5mm

MATERIAL - Titanium / Stainless Steel
HOLES - 4, 5, 6, 7, 8, 9, 10, 11, 12, 14



• 150 | Locking Compression T Plate Right Angled 3.5mm

MATERIAL - Titanium / Stainless Steel
HOLES - 3, 4, 5, 6, 7, 8



• 151 | Locking Compression T Plate Oblique Angled 3.5mm (Left & Right)

MATERIAL - Titanium / Stainless Steel
HOLES - 3, 4, 5, 6, 7, 8



• 186 | Locking Reconstruction (Thin) Plate 3.5mm

MATERIAL - Titanium / Stainless Steel
HOLES - 4, 5, 6, 7, 8, 9, 10, 12, 14, 20



• 164 | 3.5mm Locking Hook Plate

MATERIAL - Titanium / Stainless Steel
HOLES - 3, 4, 5, 6



• 133A | Locking One - Third Tubular Plate 3.5mm

MATERIAL - Titanium / Stainless Steel
HOLES - 5, 6, 7, 8, 9, 10, 12

Locking Implants



- **152** | Locking Reconstruction Plate 3.5mm

MATERIAL - Titanium / Stainless Steel

HOLES - 5, 6, 7, 8, 9, 10, 11, 12, 14, 16, 18, 20



- **157** | Locking Distal Humeral Plate with Support 3.5mm (Left & Right)

MATERIAL - Titanium / Stainless Steel

HOLES - 3, 4, 5, 6, 7, 8, 9, 10



- **158** | Locking Distal Humeral Plate 3.5mm (Left & Right)

MATERIAL - Titanium / Stainless Steel

HOLES - 3, 4, 5, 6, 7, 8, 9, 10



- **159** | Locking Medial Distal Humeral Plate 3.5mm (Left & Right)

MATERIAL - Titanium / Stainless Steel

HOLES - 3, 4, 5, 6, 7, 8, 9, 10



- **171** | Locking Olecranon Plate 3.5mm (Left & Right)

MATERIAL - Titanium / Stainless Steel

HOLES - 3, 4, 5, 6, 7, 8, 9, 10, 11



- **153** | Locking Proximal Humeral Plate 3.5mm

MATERIAL - Titanium / Stainless Steel

HOLES - 4, 5, 6, 7, 8, 9, 10, 11, 12, 13, 14



- **185** | Locking Distal Humerus Extra Articular 3.5mm Plate (Left & Right)

MATERIAL - Titanium / Stainless Steel

HOLES - 4, 6, 8, 10, 12, 14



- **156** | Locking Long Head Proximal Humeral Plate 3.5mm

MATERIAL - Titanium / Stainless Steel

HOLES - 3, 4, 5, 6

Locking Implants



- **156A** | Locking Long Head Proximal Humeral Plate 3.5mm (Broad)

MATERIAL - Titanium / Stainless Steel
HOLES - 7, 8, 9, 10, 12, 14



- **160** | Locking Superior Anterior Clavicle Plate 3.5mm (Left & Right)

MATERIAL - Titanium / Stainless Steel
HOLES - 6, 7, 8



- **161** | Locking Superior Anterior Clavicle Plate with Lateral Extension 3.5mm (Left & Right)

MATERIAL - Titanium / Stainless Steel
HOLES - 3, 4, 5, 6, 7, 8



- **162** | Locking Clavicle Hook Plate 3.5mm Hook Depth 12mm, 15mm, 18mm (Left & Right)

MATERIAL - Titanium / Stainless Steel
HOLES - 4, 5, 6, 7



- **154** | Locking Medial Distal Tibial Plate 3.5mm (Left & Right)

MATERIAL - Titanium / Stainless Steel
HOLES - 4, 5, 6, 7, 8, 9, 10, 12, 13, 14



- **163** | Locking Medial Distal Tibia Plate 3.5mm without tab (Left & Right)

MATERIAL - Titanium / Stainless Steel
HOLES - 4, 5, 6, 7, 8, 9, 10, 11, 12, 14



- **174** | Locking Anterolateral Distal Tibia Plate 3.5mm (Left & Right)

MATERIAL - Titanium / Stainless Steel
HOLES - 5, 6, 7, 8, 9, 10, 12



- **175** | Locking Distal Fibula Plate 3.5mm

MATERIAL - Titanium / Stainless Steel
HOLES - 3, 4, 5, 6, 7, 8

Locking Implants



- **175A** | Locking Distal Fibula Plate 3.5mm (Left & Right)

MATERIAL - Titanium / Stainless Steel

HOLES - 3, 4, 5, 6, 7, 8



- **175B** | Locking XVA Distal Fibula Plate 3.5mm (Left & Right)

MATERIAL - Titanium / Stainless Steel

HOLES - 3, 4, 5, 6, 7, 8



- **196** | Locking Anatomical Proximal Tibia Plate 3.5mm (Left & Right)

MATERIAL - Titanium / Stainless Steel

HOLES - 4, 5, 6, 7, 8, 9, 10, 11, 13



- **182** | Locking Posterior Medial Proximal Tibia Plate 3.5mm

MATERIAL - Titanium / Stainless Steel

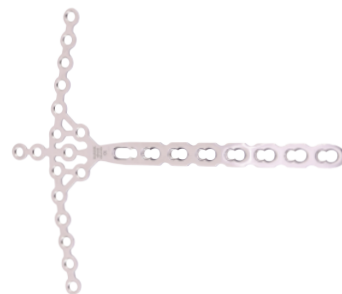
HOLES - 1, 2, 3, 4, 5, 6, 7, 8, 9, 10



- **184** | 3.5mm Locking Medial Proximal Tibia Plate (Left & Right)

MATERIAL - Titanium / Stainless Steel

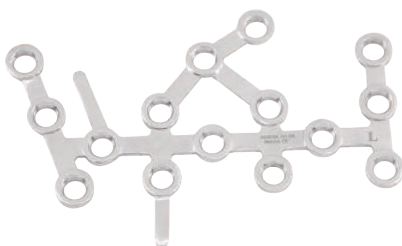
HOLES - 4, 5, 6, 7, 8, 9, 10, 12, 14, 16



- **454** | Locking PILON Tibial Plate 3.5mm

MATERIAL - Stainless Steel

HOLES - 7, 8, 9



- **167** | Locking Calcaneal Plate 3.5mm (Left & Right)

MATERIAL - Titanium / Stainless Steel

SIZE - Small, Medium, Large, Extra Small



- **155** | Locking Cloverleaf Plate 3.5mm

MATERIAL - Titanium / Stainless Steel

HOLES - 3, 4, 5, 6, 7, 8

Locking Implants



- **197** | Locking Proximal Tibia Plate 3.5mm (Left & Right)

MATERIAL - Titanium / Stainless Steel

HOLES - 4, 6, 8, 10, 12, 14



- **178** | Locking Medial Distal Humeral Metaphyseal Plate 3.5mm

MATERIAL - Titanium / Stainless Steel

HOLES - 5, 6, 7, 8, 9, 10, 11



- **179** | Locking Proximal Humeral Periarticular Plate 3.5mm (Left & Right)

MATERIAL - Titanium / Stainless Steel

HOLES - 2, 3, 4, 5, 6, 8, 10, 12

Instruments



- 601.005 | Drill Bits 1.8mm x 125mm For Quick Coupling
- 601.031 | Drill Bits 2.0mm x 145mm For Quick Coupling
- 601.021 | Drill Bits 2.3mm x 130mm For Quick Coupling
- 601.023 | Drill Bits 2.5mm x 165mm For Quick Coupling
- 601.024 | Drill Bits 2.7mm x 165mm For Quick Coupling
- 601.019 | Drill Bits 2.8mm x 165mm For Quick Coupling
- 601.032 | Drill Bits 1.8mm x 110mm For Quick Coupling
- 601.033 | Drill Bits 2.0mm x 110mm For Quick Coupling



- 603.001 | Quick Coupling T Handle



- 603.027 | Tap 2.7mm for Quick Coupling T Handle
- 603.035 | Tap 3.5mm Cortex Screw 20TPI For Quick Coupling
- 603.040 | Tap 4.0mm Cancellous Screw For Quick Coupling



- 734.024 | Tap 2.4mm Locking Screw For Quick Coupling
- 734.027 | Tap 2.7mm Locking Screw For Quick Coupling
- 734.035 | Tap 3.5mm Locking Screw For Quick Coupling



- 606.035 | Counter Sink For 3.5mm



- 660.010 | Triple Drill Guide 2.0mm with 3hole Opposite Side 1hole



- 605A.024 | Universal Drill And Tap Sleeve 2.4/1.8mm
- 605A.027 | Universal Drill And Tap Sleeve 2.7/2.0mm
- 605A.035 | Universal Drill And Tap Sleeve 3.5/2.5mm



- 607.035 | DCP Drill Sleeve 3.5mm for use 2.5mm Drill



- **733.024** | LCP Drill Sleeve 2.4mm, For Drill Bits 1.8mm
- **733.027** | LCP Drill Sleeve 2.7mm, For Drill Bits 2.3mm
- **733.035** | LCP Drill Sleeve 3.5mm, For Drill Bits 2.8mm



- **733.020** | LCP Drill Sleeve For variable angle plate 2.4mm, For Drill Bits 1.8mm



- **609.005** | Depth Gauge 50mm Length for 2.4/2.7mm Screw
- **609.004** | Depth Gauge For 2.4mm To 2.7mm Screw Length 60mm
- **609.002** | Depth Gauge For 3.5mm To 4.0mm Screw Length 80mm



- **610.002** | Screw Forceps Self Holding



- **735.06** | Torque Limit Adapter 0.8 Nm
- **735.07** | Torque Limit Adapter 1.5 Nm



- **614.020** | Shaft for Hexagonal Screw Driver 2.0mm Tip for 2.4/2.7mm screws
- **614.025** | Shaft for Hexagonal Screw Driver 2.5mm Tip for 3.5/4.0mm screws



- **614.T08** | Shaft for Star Screw Driver T08 Tip for 2.4/2.7mm screws
- **614.T15** | Shaft for Star Screw Driver T15 Tip for 3.5/4.0mm screws



- **616A.002** | Bending Iron Small For Plate 2.7mm And 3.5mm A
- **616B.002** | Bending Iron Small For Plate 2.7mm And 3.5mm B

Instruments



• 617.001 | Sharp Hook



• 660.013 | K Wire Bender Iron



• 660.014 | Universal Wire Cutter/Bender/Pilers



• 687.144 | Self-centering Bone Holding Forceps
Length 144mm

• 687.191 | Self-Centering Bone Holding Forceps
Length 191mm



• 688.146 | Reduction Forceps Serrated Jaws
Length 146mm



• 689.126 | Reduction Forceps With Points
Length 126mm



• 706.008 | Retractor 8mm Wide

• 706.015 | Retractor 15mm Wide



• 711.001 | Periosteal Elevator Curved Blade 6mm wide



• 738.035 | LCP Plate Holder 3.5mm Length 100mm



• 619.035 | Screw Remover With Quick coupling 2.5mm Hex



• 609.008 | Open Measuring Device



• 612.011 | Quick Coupling Stright Handle



• 655.006 | Bone Curette Small 4mm x 6mm



• 689.140 | Reduction Forceps With Points Length 140mm



• 689.205 | Reduction Forceps With Points Length 205mm



• 733.021 | Outer Sleeve 6.0/5.0 for Plate
• 733.022 | Drill Sleeve 2.8mm
• 733.023 | Sleeve for K Wire 1.6mm

Instruments



- **612A.025** | Screw Driver for Holding Sleeve 2.5mm Tip



- **613A.025** | Holding Sleeve for Locking screws 3.5/4.0mm
- **613B.025** | Holding Sleeve for Non Locking screws 3.5/4.0mm



- **805.007** | 4mm Tommy Bar



- **613C.027** | Holding Sleeve for Locking screws 2.4/2.7mm
- **613D.027** | Holding Sleeve for Non Locking screws 2.7mm



- **616.013** | Universal Plate Bender



- **603A.035** | Tap 3.5mm x 110mm for Quick Coupling
- **603A.040** | Tap 4.0mm x 110mm for Quick Coupling



- **328B.15** | K Wire (Double Side Trocar Tip) 1.5mm x 150mm
- **328B.18** | K Wire (Double Side Trocar Tip) 1.8mm x 150mm
- **328B.20** | K Wire (Double Side Trocar Tip) 2.0mm x 150mm



- **614.T08A** | Shaft for Star Screw Driver Long T08 Tip for 2.4/2.7mm screws



- **609.006** | Measuring Device 40mm Length for 2.4/2.7mm Screw



Instruments

- 601.005 Drill Bits 1.8mm x 125mm for Quick Coupling T Handle 2 Each
- 601.021 Drill Bits 2.3mm x 130mm for Quick Coupling T Handle 2 Each
- 601.023 Drill Bits 2.5mm x 165mm for Quick Coupling T Handle 2 Each
- 601.024 Drill Bits 2.7mm x 165mm for Quick Coupling T Handle 2 Each
- 601.031 Drill Bits 2.0mm x 145mm for Quick Coupling T Handle 2 Each
- 601.019 Drill Bits 2.8mm x 165mm for Quick Coupling T Handle 2 Each
- 603.001 Quick Coupling T Handle 1 Each
- 603.027 Tap 2.7mm Cortex Screw For Quick Coupling 1 Each
- 603.035 Tap 3.5mm Cortex Screw 20TPI For Quick Coupling 1 Each
- 603.040 Tap 4.0mm Cancellous Screw For Quick Coupling 1 Each
- 734.024 Tap 2.4mm Locking Screw For Quick Coupling 1 Each
- 734.027 Tap 2.7mm Locking Screw For Quick Coupling 1 Each
- 734.035 Tap 3.5mm Locking Screw For Quick Coupling 1 Each
- 606.035 Counter Sink Shaft For 3.5mm 1 Each
- 660.010 Triple Drill Guide 2.0mm With 3hole And Opposite Side 1hole 1 Each
- 605A.024 Universal Drill And Tap Sleeve 2.4/1.8mm 1 Each
- 605A.027 Universal Drill And Tap Sleeve 2.7/2.0mm 1 Each
- 605A.035 Universal Drill And Tap Sleeve 3.5/2.5mm 1 Each
- 607.035 DCP Drill Sleeve 3.5mm for use 2.5mm Drill 1 Each
- 733.027 LCP Drill Sleeve 2.7mm, For Drill Bits 2.3mm 1 Each
- 733.035 LCP Drill Sleeve 3.5mm, For Drill Bits 2.8mm 2 Each
- 733.020 LCP Drill Sleeve For variable angle plate 2.4mm, For Drill Bits 1.8mm 1 Each

Instruments

- 609.004 Depth Gauge For 2.4mm To 2.7mm Screw Length 60mm 1 Each
- 609.002 Depth Gauge For 3.5mm To 4.0mm Screw Length 80mm 1 Each
- 610.002 Screw Forceps Self Holding 1 Each
- 612A.025 Screw Driver for Holding Sleeve 1 Each
- 613A.025 Holding Sleeve for Locking screws 3.5/4.0mm 1 Each
- 613B.025 Holding Sleeve for Non Locking screws 3.5/4.0mm 1 Each
- 612.011 Quick Coupling Stright Handle 1 Each
- 735.06 Torque Limit Adapter 0.8 Nm 1 Each
- 735.07 Torque Limit Adapter 1.5 Nm 1 Each
- 614.025 Shaft for Hexagonal Screw Driver 2.5mm Tip for 3.5/4.0mm screws 1 Each
- 614.T15 Shaft for Star Screw Driver T15 Tip for 3.5/4.0mm screws 1 Each
- 614.T08 Shaft for Star Screw Driver T08 Tip for 2.4/2.7mm screws 1 Each
- 614.020 Shaft for Hexagonal Screw Driver 2.0mm Tip for 2.4/2.7mm screws 1 Each
- 617.001 Sharp Hook 1 Each
- 613C.027 Holding Sleeve for Locking screws 2.4/2.7mm 1 Each
- 613D.027 Holding Sleeve for Non Locking screws 2.7mm 1 Each
- 733.021 Outer Sleeve 6.0/5.0 for Plate 2 Each
- 733.022 Drill Sleeve 2.8mm 2 Each
- 733.023 Sleeve for K Wire 1.6mm 2 Each
- 609.008 Open Measuring Device 1 Each

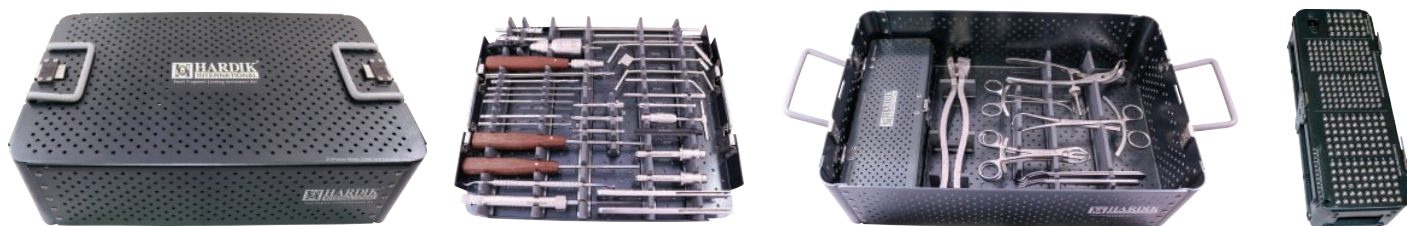
SAGC.72 Small Fragment Screw Set



Implants

- 198 2.4mm Locking Compression Screw Star Head Length : 10mm, 12mm, 14mm, 16mm, 18mm, 20mm, 22mm, 24mm, 26mm, 28mm, 30mm, 32mm, 34mm, 36mm, 38mm, 40mm 3 Each
- 199 2.7mm Locking Compression Screw Star Head Length : 10mm, 12mm, 14mm, 16mm, 18mm, 20mm, 22mm, 24mm, 26mm, 28mm, 30mm, 32mm, 34mm, 36mm, 38mm, 40mm 3 Each
- 146 3.5mm Locking Compression Screw Length : 10mm, 12mm, 14mm, 16mm, 18mm, 20mm, 22mm, 24mm, 26mm, 28mm, 30mm, 32mm, 34mm, 36mm, 38mm, 40mm, 45mm, 50mm, 55mm, 60mm, 65mm, 70mm, 75mm, 80mm 5 Each

- 148 4mm Locking Cancellous Screw (Fully Thread) Length : 14mm, 16mm, 18mm, 20mm, 22mm, 24mm, 26mm, 28mm, 30mm, 35mm, 40mm, 45mm, 50mm, 55mm, 60mm, 65mm, 70mm, 75mm, 80mm 3 Each
- 458 2.7mm Cortex Screw (Self Tapping) Star Head Length : 12mm, 14mm, 16mm, 18mm, 20mm, 22mm, 24mm, 26mm, 28mm, 30mm 3 Each
- 075 2.7mm Cortex Screw (Self Tapping) Length : 08mm, 10mm, 12mm, 14mm, 16mm, 18mm, 20mm, 22mm, 24mm, 26mm, 28mm, 30mm, 35mm, 40mm 3 Each
- 451 Cortex Screw 3.5mm (Self Tapping) Length : 10mm, 12mm, 14mm, 16mm, 18mm, 20mm, 22mm, 24mm, 26mm, 28mm, 30mm, 32mm, 34mm, 36mm, 38mm, 40mm, 45mm, 50mm, 55mm, 60mm, 65mm, 70mm 5 Each
- 130 4.0mm Cancellous Screw (Short Thread) Length : 20mm, 22mm, 24mm, 26mm, 28mm, 30mm, 35mm, 40mm, 45mm, 50mm, 55mm, 60mm 2 Each
- 131 4.0mm Cancellous Screw (Fully Thread) Length : 20mm, 22mm, 24mm, 26mm, 28mm, 30mm, 32mm, 34mm, 36mm, 38mm, 40mm, 42mm, 44mm, 46mm, 48mm, 50mm, 55mm, 60mm 2 Each
- 125 Washer 10.0mm For Small Screws 10mm/4.6mm 5 Each



Instruments

601.005	Drill Bits 1.8mm x 125mm for Quick Coupling	2 Each
601.031	Drill Bits 2.0mm x 145mm for Quick Coupling	2 Each
601.021	Drill Bits 2.3mm x 130mm for Quick Coupling	2 Each
601.023	Drill Bits 2.5mm x 165mm for Quick Coupling	2 Each
601.024	Drill Bits 2.7mm x 165mm for Quick Coupling	2 Each
601.019	Drill Bits 2.8mm x 165mm for Quick Coupling	2 Each
603.001	Quick Coupling T Handle	1 Each
603.027	Tap 2.7mm Cortex Screw For Quick Coupling	1 Each
605A.024	Universal Drill And Tap Sleeve 2.4/1.8mm	1 Each
605A.027	Universal Drill And Tap Sleeve 2.7/2.0mm	1 Each
605A.035	Universal Drill And Tap Sleeve 3.5/2.5mm	1 Each
606.035	Counter Sink for 3.5mm	1 Each
607.035	DCP Drill Sleeve 3.5mm for use 2.5mm Drill	1 Each
609.002	Depth Gauge For 3.5mm To 4.0mm Screw Length 80mm	1 Each
609.004	Depth Gauge For 2.4mm To 2.7mm Screw Length 60mm	1 Each
609.008	Open Measuring Device	1 Each
610.002	Screw Forceps Self Holding	1 Each
612.011	Quick Coupling Stright Handle	1 Each
614.025	Shaft Small Hexagonal Screw Driver 2.5mm Tip	1 Each
616.013	Universal Plate Bender	1 Each
617.001	Sharp Hook	1 Each
619.035	Screw Remover With Quick coupling 2.5mm Hex	1 Each
655.006	Bone Curette Small 4mm x 6mm	1 Each
660.010	Triple Drill Guide 2.0mm with 3hole Opposite side 1hole	1 Each
660.013	K Wire Bender Iron	1 Each
660.014	Universal Wire Cutter/Bender/Pilers	1 Each
687.144	Self-centering Bone Holding Forceps Length 144mm	1 Each
687.191	Self-centering Bone Holding Forceps Length 191mm	1 Each
688.146	Reduction Forceps Serrated jaws Length 146mm	2 Each
689.126	Reduction Forceps With Points Length 126mm	1 Each
689.140	Reduction Forceps With Points Length 140mm	1 Each
689.205	Reduction Forceps With Points Length 205mm	1 Each
706.008	Retractorl 8mm wide	2 Each
706.015	Retractor 15mm wide	2 Each
711.001	Periosteal Elevator Curved Blade 6mm wide	1 Each
733.020	LCP Drill Sleeve For variable angle plate 2.4mm, For Drill Bits 1.8mm	1 Each
733.021	Outer Sleeve 6.0/5.0 for Plate	2 Each
733.022	Drill Sleeve 2.8mm	2 Each
733.023	Sleeve for K Wire 1.6mm	2 Each
733.024	LCP Drill Sleeve 2.4mm, For Drill Bits 1.8mm	2 Each
733.027	LCP Drill Sleeve 2.7mm, For Drill Bits 2.3mm	2 Each
733.035	LCP Drill Sleeve 3.5mm, For Drill Bits 2.8mm	2 Each
734.024	Tap 2.4mm Locking Screw For Quick Coupling	1 Each
734.027	Tap 2.7mm Locking Screw For Quick Coupling	1 Each
734.035	Tap 3.5mm Locking Screw For Quick Coupling	1 Each
735.06	Torque Limit Adapter 0.8 Nm	1 Each
735.07	Torque Limit Adapter 1.5 Nm	1 Each
738.035	LCP Plate Holder 3.5mm Length 100mm	1 Each
603A.035	Tap 3.5mm x 110mm for Quick Coupling	1 Each
603A.040	Tap 4.0mm x 110mm for Quick Coupling	1 Each
612A.025	Screw Driver for Holding Sleeve	1 Each
613A.025	Holding Sleeve for Locking screws 3.5/4.0mm	1 Each
613B.025	Holding Sleeve for Non Locking screws 3.5/4.0mm	1 Each

Instruments

614.T08	Shaft for Star Screw Driver T08 Tip for 2.4/2.7mm screws	1 Each
614.T15	Shaft for Star Screw Driver T15 Tip for 3.5/4.0mm screws	1 Each
614.020	Shaft for Hexagonal Screw Driver 2.0mm Tip for 2.4/2.7mm screws	1 Each
616A.002	Bending Iron Small for Plates 2.7 and 3.5mm	1 Each
616B.002	Bending Iron Small for Plates 2.7 and 3.5mm	1 Each
805.007	4mm Tommy Bar	1 Each
328B.15	K Wire (Double Side Trocar Tip) 1.5mm x 150mm	10 Each
328B.18	K Wire (Double Side Trocar Tip) 1.8mm x 150mm	10 Each
328B.20	K Wire (Double Side Trocar Tip) 2.0mm x 150mm	10 Each
613C.027	Holding Sleeve for Locking screws 2.4/2.7mm	1 Each
613D.027	Holding Sleeve for Non Locking screws 2.7mm	1 Each

Implants

198	2.4mm Locking Compression Screw Star Head Length : 10mm, 12mm, 14mm, 16mm, 18mm, 20mm, 22mm, 24mm, 26mm, 28mm, 30mm, 32mm, 34mm, 36mm, 38mm, 40mm	5 Each
199	2.7mm Locking Compression Screw Star Head Length : 10mm, 12mm, 14mm, 16mm, 18mm, 20mm, 22mm, 24mm, 26mm, 28mm, 30mm, 32mm, 34mm, 36mm, 38mm, 40mm, 42mm, 44mm	5 Each
146	3.5mm Locking Compression Screw Length : 10mm, 12mm, 14mm, 16mm, 18mm, 20mm, 22mm, 24mm, 26mm, 28mm, 30mm, 32mm, 34mm, 36mm, 38mm, 40mm, 45mm, 50mm, 55mm, 60mm, 65mm, 70mm, 75mm, 80mm, 85mm, 90mm	5 Each
148	4mm Locking Cancellous Screw (Fully Thread) Length : 14mm, 16mm, 18mm, 20mm, 22mm, 24mm, 26mm, 28mm, 30mm, 35mm, 40mm, 45mm, 50mm, 55mm, 60mm, 65mm, 70mm, 75mm, 80mm	3 Each
075	2.7mm Cortex Screw (Self Tapping) Length : 08mm, 10mm, 12mm, 14mm, 16mm, 18mm, 20mm, 22mm, 24mm, 26mm, 28mm, 30mm, 35mm, 40mm	3 Each
451	Cortex Screw 3.5mm (Self Tapping) Length : 10mm, 12mm, 14mm, 16mm, 18mm, 20mm, 22mm, 24mm, 26mm, 28mm, 30mm, 32mm, 34mm, 36mm, 38mm, 40mm, 45mm, 50mm, 55mm, 60mm, 65mm, 70mm	5 Each
130	4.0mm Cancellous Screw (Short Thread) Length : 20mm, 22mm, 24mm, 26mm, 28mm, 30mm, 35mm, 40mm, 45mm, 50mm, 55mm, 60mm	2 Each
131	4.0mm Cancellous Screw (Fully Thread) Length : 20mm, 22mm, 24mm, 26mm, 28mm, 30mm, 32mm, 34mm, 36mm, 38mm, 40mm, 42mm, 44mm, 46mm, 48mm, 50mm, 55mm, 60mm	2 Each
125	Washer 10.0mm For Small Screws 10mm/4.6mm	5 Each
459	2.4mm Cortex Screw (Self Tapping) Star Head Length : 12mm, 14mm, 16mm, 18mm, 20mm, 22mm, 24mm, 26mm, 28mm, 30mm	5 Each



Instruments

601.005	Drill Bits 1.8mm x 125mm for Quick Coupling	2 Each
601.031	Drill Bits 2.0mm x 145mm for Quick Coupling	2 Each
601.021	Drill Bits 2.3mm x 130mm for Quick Coupling	2 Each
601.023	Drill Bits 2.5mm x 165mm for Quick Coupling	2 Each
601.024	Drill Bits 2.7mm x 165mm for Quick Coupling	2 Each
601.019	Drill Bits 2.8mm x 165mm for Quick Coupling	2 Each
603.001	Quick Coupling T Handle	1 Each
603.027	Tap 2.7mm Cortex Screw For Quick Coupling	1 Each
605A.024	Universal Drill And Tap Sleeve 2.4/1.8mm	1 Each
605A.027	Universal Drill And Tap Sleeve 2.7/2.0mm	1 Each
605A.035	Universal Drill And Tap Sleeve 3.5/2.5mm	1 Each
606.035	Counter Sink for 3.5mm	1 Each
607.035	DCP Drill Sleeve 3.5mm for use 2.5mm Drill	1 Each
609.002	Depth Guage For 3.5mm To 4.0mm Screw Length 80mm	1 Each
609.004	Depth Guage For 2.4mm To 2.7mm Screw Length 60mm	1 Each
609.008	Open Measuring Device	1 Each
610.002	Screw Forceps Self Holding	1 Each
612.011	Quick Coupling Stright Handle	1 Each
614.025	Shaft Small Hexagonal Screw Driver 2.5mm Tip	1 Each
616.013	Universal Plate Bender	1 Each
617.001	Sharp Hook	1 Each
619.035	Screw Remover With Quick coupling 2.5mm Hex	1 Each
655.006	Bone Curette Small 4mm x 6mm	1 Each
660.010	Triple Drill Guide 2.0mm with 3hole Opposite side 1hole	1 Each
660.013	K Wire Bender Iron	1 Each
660.014	Universal Wire Cutter/Bender/Pilers	1 Each
687.144	Self-centering Bone Holding Forceps Length 144mm	1 Each
687.191	Self-centering Bone Holding Forceps Length 191mm	1 Each
688.146	Reduction Forceps Serrated jaws Length 146mm	2 Each
689.126	Reduction Forceps With Points Length 126mm	1 Each
689.140	Reduction Forceps With Points Length 140mm	1 Each
689.205	Reduction Forceps With Points Length 205mm	1 Each
706.008	Retractor 8mm wide	2 Each
706.015	Retractor 15mm wide	2 Each
711.001	Periosteal Elevator Curved Blade 6mm wide	1 Each
733.020	LCP Drill Sleeve For variable angle plate 2.4mm, For Drill Bits 1.8mm	1 Each
733.021	Outer Sleeve 6.0/5.0 for Plate	2 Each
733.022	Drill Sleeve 2.8mm	2 Each
733.023	Sleeve for K Wire 1.6mm	2 Each
733.024	LCP Drill Sleeve 2.4mm, For Drill Bits 1.8mm	2 Each
733.027	LCP Drill Sleeve 2.7mm, For Drill Bits 2.3mm	2 Each
733.035	LCP Drill Sleeve 3.5mm, For Drill Bits 2.8mm	2 Each
734.024	Tap 2.4mm Locking Screw For Quick Coupling	1 Each
734.027	Tap 2.7mm Locking Screw For Quick Coupling	1 Each
734.035	Tap 3.5mm Locking Screw For Quick Coupling	1 Each
735.06	Torque Limit Adapter 0.8 Nm	1 Each
735.07	Torque Limit Adapter 1.5 Nm	1 Each
738.035	LCP Plate Holder 3.5mm Length 100mm	1 Each
603A.035	Tap 3.5mm x 110mm for Quick Coupling	1 Each
603A.040	Tap 4.0mm x 110mm for Quick Coupling	1 Each
612A.025	Screw Driver for Holding Sleeve	1 Each

Instruments

613A.025	Holding Sleeve for Locking screws 3.5/4.0mm	1 Each
613B.025	Holding Sleeve for Non Locking screws 3.5/4.0mm	1 Each
614.T08	Shaft for Star Screw Driver T08 Tip for 2.4/2.7mm screws	1 Each
614.T15	Shaft for Star Screw Driver T15 Tip for 3.5/4.0mm screws	1 Each
614.020	Shaft for Hexagonal Screw Driver 2.0mm Tip for 2.4/2.7mm screws	1 Each
616A.002	Bending Iron Small for Plates 2.7 and 3.5mm	1 Each
616B.002	Bending Iron Small for Plates 2.7 and 3.5mm	1 Each
805.007	4mm Tommy Bar	1 Each
328B.15	K Wire (Double Side Trocar Tip) 1.5mm x 150mm	10 Each
328B.18	K Wire (Double Side Trocar Tip) 1.8mm x 150mm	10 Each
328B.20	K Wire (Double Side Trocar Tip) 2.0mm x 150mm	10 Each
613C.027	Holding Sleeve for Locking screws 2.4/2.7mm	1 Each
613D.027	Holding Sleeve for Non Locking screws 2.7mm	1 Each

Implants

199	2.7mm Locking Compression Screw Star Head Length : 10mm, 12mm, 14mm, 16mm, 18mm, 20mm, 22mm, 24mm, 26mm, 28mm, 30mm, 32mm, 34mm, 36mm, 38mm, 40mm, 42mm, 44mm	5 Each
146	3.5mm Locking Compression Screw Length : 10mm, 12mm, 14mm, 16mm, 18mm, 20mm, 22mm, 24mm, 26mm, 28mm, 30mm, 32mm, 34mm, 36mm, 38mm, 40mm, 45mm, 50mm, 55mm, 60mm, 65mm, 70mm, 75mm, 80mm, 85mm, 90mm	5 Each
148	4mm Locking Cancellous Screw (Fully Th.) Length : 14mm, 16mm, 18mm, 20mm, 22mm, 24mm, 26mm, 28mm, 30mm, 35mm, 40mm, 45mm, 50mm, 55mm, 60mm, 65mm, 70mm, 75mm, 80mm	3 Each
451	Cortex Screw 3.5mm (Self Tapping) Length : 10mm, 12mm, 14mm, 16mm, 18mm, 20mm, 22mm, 24mm, 26mm, 28mm, 30mm, 32mm, 34mm, 36mm, 38mm, 40mm, 45mm, 50mm, 55mm, 60mm, 65mm, 70mm	5 Each
130	4.0mm Cancellous Screw (Short Thread) Length : 20mm, 22mm, 24mm, 26mm, 28mm, 30mm, 35mm, 40mm, 45mm, 50mm, 55mm, 60mm	2 Each
131	4.0mm Cancellous Screw (Fully Thread) Length : 20mm, 22mm, 24mm, 26mm, 28mm, 30mm, 32mm, 34mm, 36mm, 38mm, 40mm, 42mm, 44mm, 46mm, 48mm, 50mm, 55mm, 60mm	2 Each
125	Washer 10.0mm For Small Screws 10mm/4.6mm	5 Each

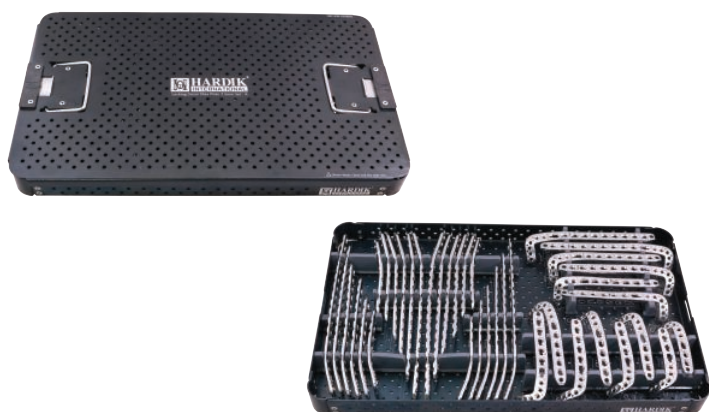
SAGC.60 Small Locking Implant Set



Implants

- | | | |
|-----|---|--------|
| 457 | Locking One - Third Tubular Plate 3.5mm
Holes : 5, 6, 7, 8, 10, 12 | 1 Each |
| 149 | Small Locking Compression Plate 3.5mm
Holes : 5, 6, 7, 8, 9, 10, 12, 14 | 1 Each |
| 152 | Locking Reconstruction Plate 3.5mm
Holes : 5, 6, 7, 8, 9, 10, 12, 14, 16 | 1 Each |
| 186 | Locking Reconstruction (Thin) Plate 3.5mm
Holes : 4, 5, 6, 7, 8, 9, 10, 12, 14 | 1 Each |

SAGC.69A Locking Distal Tibia Plate 3.5mm Set-A



Implants

- | | | |
|-----|---|--------|
| 154 | Locking Medial Distal Tibia Plate 3.5mm
(Left & Right)
Holes : 4, 6, 8, 10, 12 | 1 Each |
| 163 | Locking Medial Distal Tibia Plate 3.5mm
without tab (Left & Right)
Holes : 4, 6, 8, 10, 12 | 1 Each |
| 174 | Locking Anterolateral Distal Tibia Plate
3.5mm (Left & Right)
Holes : 5, 6, 7, 8, 9, 10, 12 | 1 Each |

SAGC.69B Locking Distal Tibia Plate 3.5mm Set-B



Implants

- | | | |
|------|--|--------|
| 454 | Locking PILON Tibia Plate 3.5mm
Holes : 7, 8, 9 | 1 Each |
| 167 | Locking Calcaneal Plate 3.5mm (Left & Right)
Size : Small, Midium | 1 Each |
| 175 | Locking Distal Femula Plate 3.5mm
Holes : 3, 4, 5, 6, 7, 8 | 1 Each |
| 175A | Locking Distal Femula Plate 3.5mm (Left & Right)
Holes : 3, 4, 5, 6, 7, 8 | 1 Each |

SAGC.61 Locking Proximal Humeral Plate 3.5mm Set



Implants

- | | | |
|------|--|--------|
| 156 | Locking Long Head Proximal Humeral Plate 3.5mm
Holes : 3, 4, 5, 6 | 1 Each |
| 156A | Locking Long Head Proximal Humeral
Plate 3.5mm (Broad)
Holes : 7, 8, 9, 10, 12 | 1 Each |
| 153 | Locking Proximal Humeral Plate 3.5mm
Holes : 4, 5, 6 | 1 Each |

SAGC.62A Locking Distal Humeral Plate 3.5mm Set



Implants

- | | | |
|-----|---|--------|
| 157 | Locking Distal Humeral Plate with Support 3.5mm (Left & Right)
Holes : 3, 4, 5, 6, 7, 8, 9, 10 | 1 Each |
| 158 | Locking Distal Humeral Plate 3.5mm (Left & Right)
Holes : 3, 4, 5, 6, 7, 8, 9, 10 | 1 Each |
| 159 | Locking Medial Distal Humeral Plate 3.5mm (Left & Right)
Holes : 3, 4, 5, 6, 7, 8, 9, 10 | 1 Each |

SAGC.62B Locking Distal Humerus Extra Articular 3.5mm Set



Implants

- | | | |
|-----|--|--------|
| 185 | Locking Distal Humerus Extra Articular 3.5mm Plate (Left & Right)
Holes : 4, 6, 8, 10, 12, 14 | 1 Each |
|-----|--|--------|

SAGC.63 Locking Superior Anterior Clavicle Plate 3.5mm Set



Implants

- | | | |
|-----|---|--------|
| 160 | Locking Superior Anterior Clavicle Plate 3.5mm (Left & Right)
Holes : 6, 7, 8 | 1 Each |
| 161 | Locking Superior Anterior Clavicle Plate with Lateral Extension 3.5mm (Left & Right)
Holes : 4, 6, 8 | 1 Each |
| 162 | Locking Clavicle Hook Plate 3.5mm Hook Depth 12mm, 15mm, 18mm (Left & Right)
Holes : 4, 5, 6, 7 | 1 Each |

SAGC.59B Locking Medial Proximal Tibia Plate Set

PHOTO NOT AVAILABLE

Implants

- | | | |
|-----|--|--------|
| 184 | 3.5mm Locking Medial Proximal Tibia Plate (Left & Right)
Holes : 4, 5, 6, 7, 8, 9, 10, 12 | 1 Each |
|-----|--|--------|

PHOTO NOT AVAILABLE

Implants

- 168 Locking XVA Volar Distal Radius Plate 2.7mm (Head 6hole) narrow (Left & Right)
Holes : 2, 3, 4, 5 1 Each
- 168A Locking XVA Volar Distal Radius Plate 2.7mm (Head 6hole) (Left & Right)
Holes : 2, 3, 4, 5 1 Each
- 168B Locking XVA Volar Distal Radius Plate 2.7mm (Head 7hole) (Left & Right)
Holes : 2, 3, 4, 5 1 Each
- 150 Locking Compression T Plate, Right Angled 3.5mm
Holes : 3, 4, 5, 6, 7 1 Each
- 151 Locking Compression T Plate, Oblique Angled 3.5mm (Left & Right)
Holes : 3, 4, 5, 6, 7 1 Each

Implants

- 187 Locking Distal Radius Plate 2.7mm (Left & Right)
Holes : 3, 5 1 Each
- 188 Locking Distal Radius Buttress Plate 2.7mm (Head 5hole) (Left & Right)
Holes : 3 1 Each
- 189 Locking Distal Radius Plate 2.7mm Extra Articular (Head 5hole) (Left & Right)
Holes : 3, 5 1 Each
- 190 Locking Distal Radius Plate 2.7mm Extra Articular (Head 4hole) (Left & Right)
Holes : 3, 5 1 Each

SAGC.65 Locking Proximal Tibia Plate 3.5mm Set



Implants

- 182 Locking Posterior Medial Proximal Tibia Plate 3.5mm
Holes : 1, 2, 3, 4, 5, 6, 7, 8, 9, 10 1 Each
- 196 Locking Anatomical Proximal Tibia Plate 3.5mm (Left & Right)
Holes : 4, 6, 8, 10, 13 1 Each

SAGC.59A Locking Proximal Radius Plate Set



Implants

- 172 Locking Proximal Radius Neck Plate 2.7mm
Holes : 2, 3, 4 1 Each
- 173 Locking Proximal Radius Rim Plate 2.7mm (Left & Right)
Holes : 2, 3, 4 1 Each
- 171 Locking Olecranon Plate 3.5mm (Left & Right)
Holes : 3, 4, 5, 6, 7, 8 1 Each
- 164 3.5mm Locking Hook Plate
Hole : 3 2 Each



Implants

- 166** Locking Volar Distal Radius Plate 2.7mm (Left & Right)
Holes : 3, 4, 5, 6 **1 Each**
- 168A** Locking XVA Volar Distal Radius Plate 2.7mm (Head 6hole) (Left & Right)
Holes : 2, 3, 4, 5 **1 Each**
- 168B** Locking XVA Volar Distal Radius Plate 2.7mm (Head 7hole) (Left & Right)
Holes : 2, 3, 4, 5 **1 Each**
- 168** Locking XVA Volar Distal Radius Plate 2.7mm (Head 6hole) narrow (Left & Right)
Holes : 2, 3, 4, 5 **1 Each**
- 172** Locking Proximal Radius Neck Plate 2.7mm
Holes : 2, 3, 4 **1 Each**
- 173** Locking Proximal Radius Rim Plate 2.7mm (Left & Right)
Holes : 2, 3, 4 **1 Each**
- 187** Locking Distal Radius Plate 2.7mm (Left & Right)
Holes : 3, 5 **1 Each**
- 188** Locking Distal Radius Buttress Plate 2.7mm (Head 5hole) (Left & Right)
Holes : 3 **1 Each**
- 189** Locking Distal Radius Plate 2.7mm Extra Articular (Head 5hole) (Left & Right)
Holes : 3, 5 **1 Each**
- 190** Locking Distal Radius Plate 2.7mm Extra Articular (Head 4hole) (Left & Right)
Holes : 3, 5 **1 Each**
- 191** Locking Distal Radius Plate 2.7mm Straight
Holes : 5, 6 **1 Each**
- 192** Locking Distal Radius L Plate 2.7mm (Head 2hole) (Left & Right)
Holes : 3, 4 **1 Each**
- 193** Locking Distal Radius L Plate 2.7mm (Head 3hole) (Left & Right)
Holes : 3, 4 **1 Each**
- 194** Locking Distal Radius L Plate Oblique Angled 2.7mm (Head 3hole) (Left & Right)
Holes : 3, 4 **1 Each**
- 195** Locking Distal Radius T Plate 2.7mm (Head 3hole)
Holes : 3, 4 **1 Each**
- 075** 2.7mm Cortex Screw (Self Tapping)
Length : 10mm, 12mm, 14mm, 16mm, 18mm, 20mm, 22mm, 24mm, 26mm, 28mm, 30mm, 35mm, 40mm **5 Each**
- 165** 2.7mm Locking Compression Screw
Length : 10mm, 12mm, 14mm, 16mm, 18mm, 20mm, 22mm, 24mm, 26mm, 28mm, 30mm, 32mm, 34mm, 36mm, 38mm, 40mm **5 Each**

Implants

- 459** 2.4mm Cortex Screw (Self Tapping) (Star Head)
Length : 10mm, 12mm, 14mm, 16mm, 18mm, 20mm, 22mm, 24mm, 26mm, 28mm, 30mm, 32mm, 34mm, 36mm, 38mm, 40mm **4 Each**
- 198** 2.4mm Locking Compression Screw (Star Head)
Length : 10mm, 12mm, 14mm, 16mm, 18mm, 20mm, 22mm, 24mm, 26mm, 28mm, 30mm, 32mm, 34mm, 36mm, 38mm, 40mm **5 Each**
- 198V** 2.4mm Variable Locking Compression Screw (Star Head)
Length : 12mm, 14mm, 16mm, 18mm, 20mm, 22mm, 24mm, 26mm, 28mm, 30mm **4 Each**

Instruments

- 733.020** LCP Drill Sleeve For variable angle plate 2.4mm, For Drill Bits 1.8mm **1 Each**
- 733.024** LCP Drill Sleeve 2.4mm, For Drill Bits 1.8mm **2 Each**
- 733.027** LCP Drill Sleeve 2.7mm, For Drill Bits 2.3mm **2 Each**
- 601.032** Drill Bits 1.8mm x 110mm for Quick Coupling T Handle **2 Each**
- 601.033** Drill Bits 2.0mm x 110mm for Quick Coupling T Handle **2 Each**
- 601.021** Drill Bits 2.3mm x 130mm for Quick Coupling T Handle **2 Each**
- 614.T08A** Shaft for Star Screw Driver Long T08 Tip for 2.4/2.7mm screws **1 Each**
- 614.T08** Shaft for Star Screw Driver T08 Tip for 2.4/2.7mm screws **1 Each**
- 614.025** Shaft for Hexagonal Screw Driver 2.5mm Tip for 3.5/4.0mm screws **1 Each**
- 614.020** Shaft for Hexagonal Screw Driver 2.0mm Tip for 2.4/2.7mm screws **1 Each**
- 735.06** Torque Limit Adapter 0.8 Nm **1 Each**
- 612.011** Quick Coupling Stright Handle **1 Each**
- 609.005** Depth Guage 50mm Length for 2.4/2.7mm Screw **1 Each**
- 603.001** Quick Coupling T Handle **1 Each**
- 706.008** Retractor 8mm wide **2 Each**
- 689.205** Reduction Forceps With Points Length 205mm **1 Each**
- 689.140** Reduction Forceps With Points Length 140mm **1 Each**
- 711.001** Periosteal Elevator Curved Blade 6mm wide **1 Each**
- 605A.024** Universal Drill And Tap Sleeve 2.4/1.8mm **1 Each**
- 605A.027** Universal Drill And Tap Sleeve 2.7/2.0mm **1 Each**
- 609.006** Measuring Device 40mm Length for 2.4/2.7mm Screw **1 Each**
- 613C.027** Holding Sleeve for Locking screws 2.4/2.7mm **1 Each**
- 613D.027** Holding Sleeve for Non Locking screws 2.7mm **1 Each**



Implants

- 076** 2.7mm Cortex Screw
Length : 08mm, 10mm, 12mm, 14mm, 16mm, 18mm, 20mm, 22mm, 24mm, 26mm, 28mm, 30mm, 32mm, 34mm, 36mm, 38mm, 40mm **4 Each**
- 165** 2.7mm Locking Compression Screw
Length : 10mm, 12mm, 14mm, 16mm, 18mm, 20mm, 22mm, 24mm, 26mm, 28mm, 30mm, 32mm, 34mm, 36mm, 38mm, 40mm **4 Each**

Implants

- 126** 3.5mm Cortex Screw (20TPI)
Length : 10mm, 12mm, 14mm, 16mm, 18mm, 20mm, 22mm, 24mm, 26mm, 28mm, 30mm, 32mm, 34mm, 36mm, 38mm, 40mm, 45mm, 50mm, 55mm, 60mm **6 Each**
- 146** 3.5mm Locking Compression Screw
Length : 10mm, 12mm, 14mm, 16mm, 18mm, 20mm, 22mm, 24mm, 26mm, 28mm, 30mm, 32mm, 34mm, 36mm, 38mm, 40mm, 45mm, 50mm, 55mm, 60mm, 65mm, 70mm, 75mm **6 Each**
- 147** 4mm Locking Cancellous Screw (Short Th.)
Length : 14mm, 16mm, 18mm, 20mm, 22mm, 24mm, 26mm, 28mm, 30mm, 32mm, 34mm, 36mm, 38mm, 40mm, 45mm, 50mm, 55mm, 60mm **3 Each**
- 148** 4mm Locking Cancellous Screw (Fully Th.)
Length : 14mm, 16mm, 18mm, 20mm, 22mm, 24mm, 26mm, 28mm, 30mm, 32mm, 34mm, 36mm, 38mm, 40mm, 45mm, 50mm, 55mm, 60mm, 65mm, 70mm, 75mm, 80mm **3 Each**

PHOTO NOT AVAILABLE

Instruments

- 601.005** Drill Bits 1.8mm x 125mm for Quick Coupling T Handle **2 Each**
- 601.031** Drill Bits 2.0mm x 145mm for Quick Coupling T Handle **2 Each**
- 601.021** Drill Bits 2.3mm x 130mm for Quick Coupling T Handle **2 Each**
- 601.024** Drill Bits 2.7mm x 165mm for Quick Coupling T Handle **2 Each**
- 601.019** Drill Bits 2.8mm x 165mm for Quick Coupling T Handle **2 Each**
- 603.001** Quick Coupling T Handle **1 Each**
- 603.027** Tap 2.7mm Cortex Screw For Quick Coupling **1 Each**
- 603.035** Tap 3.5mm Cortex Screw For Quick Coupling **1 Each**
- 609.002** Depth Guage For 3.5mm To 4.0mm Screw Length 80mm **1 Each**
- 609.004** Depth Guage For 2.4mm To 2.7mm Screw Length 60mm **1 Each**
- 612.020** Small Hexagonal Screw Driver 2.0mm Tip **1 Each**
- 612.025** Small Hexagonal Screw Driver 2.5mm Tip **1 Each**
- 735.01** Limit Screw Driver handle without shaft for 2.4/2.7mm screws **1 Each**
- 735.02** Limit Screw Driver handle without shaft for 3.5/4.0mm screws **1 Each**
- 614.020** Shaft for Hexagonal Screw Driver 2.0mm Tip for 2.4/2.7mm screws **1 Each**
- 614.025** Shaft for Hexagonal Screw Driver 2.5mm Tip for 3.5/4.0mm screws **1 Each**
- 614.T08A** Shaft for Star Screw Driver Long T08 Tip for 2.4/2.7mm screws **1 Each**
- 733.027** LCP Drill Sleeve 2.7mm, For Drill Bits 2.3mm **2 Each**
- 733.035** LCP Drill Sleeve 3.5mm, For Drill Bits 2.8mm **2 Each**
- 733.020** LCP Drill Sleeve For variable angle plate 2.4mm For Drill Bits 1.8mm **1 Each**

Implants

- 076** 2.7mm Cortex Screw
Length : 08mm, 10mm, 12mm, 14mm, 16mm, 18mm, 20mm, 22mm, 24mm, 26mm, 28mm, 30mm, 32mm, 34mm, 36mm, 38mm, 40mm **4 Each**
- 198** 2.4mm Locking Compression Screw (Star Head)
Length : 10mm, 12mm, 14mm, 16mm, 18mm, 20mm, 22mm, 24mm, 26mm, 28mm, 30mm, 32mm, 34mm, 36mm, 38mm, 40mm **4 Each**
- 165** 2.7mm Locking Compression Screw
Length : 10mm, 12mm, 14mm, 16mm, 18mm, 20mm, 22mm, 24mm, 26mm, 28mm, 30mm, 32mm, 34mm, 36mm, 38mm, 40mm **4 Each**
- 126** 3.5mm Cortex Screw (20TPI)
Length : 10mm, 12mm, 14mm, 16mm, 18mm, 20mm, 22mm, 24mm, 26mm, 28mm, 30mm, 32mm, 34mm, 36mm, 38mm, 40mm, 45mm, 50mm **4 Each**
- 146** 3.5mm Locking Compression Screw
Length : 10mm, 12mm, 14mm, 16mm, 18mm, 20mm, 22mm, 24mm, 26mm, 28mm, 30mm, 32mm, 34mm, 36mm, 38mm, 40mm, 45mm, 50mm **5 Each**

PHOTO NOT AVAILABLE

Instruments

601.021	Drill Bits 2.3mm x 130mm for Quick Coupling T Handle	2 Each
601.024	Drill Bits 2.7mm x 165mm for Quick Coupling T Handle	2 Each
601.019	Drill Bits 2.8mm x 165mm for Quick Coupling T Handle	2 Each
603.001	Quick Coupling T Handle	1 Each
603.035	Tap 3.5mm Cortex Screw For Quick Coupling	1 Each
609.002	Depth Guage For 3.5mm To 4.0mm Screw Length 80mm	1 Each
609.004	Depth Guage For 2.4mm To 2.7mm Screw Length 60mm	1 Each
612.025	Small Hexagonal Screw Driver 2.5mm Tip	1 Each
612.020	Small Hexagonal Screw Driver 2.0mm Tip	1 Each
735.01	Limit Screw Driver handle without shaft for 2.4/2.7mm screws	1 Each
735.02	Limit Screw Driver handle without shaft for 3.5/4.0mm screws	1 Each
614.020	Shaft for Hexagonal Screw Driver 2.0mm Tip for 2.4/2.7mm screws	1 Each
614.025	Shaft for Hexagonal Screw Driver 2.5mm Tip for 3.5/4.0mm screws	1 Each
614.T08A	Shaft for Star Screw Driver Long T08 Tip for 2.4/2.7mm screws	1 Each
733.035	LCP Drill Sleeve 3.5mm, For Drill Bits 2.8mm	2 Each
733.027	LCP Drill Sleeve 2.7mm, For Drill Bits 2.3mm	2 Each

Implants

165	2.7mm Locking Compression Screw Length : 10mm, 12mm, 14mm, 16mm, 18mm, 20mm, 22mm, 24mm, 26mm, 28mm, 30mm, 32mm, 34mm, 36mm, 38mm, 40mm	4 Each
126	3.5mm Cortex Screw (20TPI) Length : 10mm, 12mm, 14mm, 16mm, 18mm, 20mm, 22mm, 24mm, 26mm, 28mm, 30mm, 32mm, 34mm, 36mm, 38mm, 40mm, 45mm, 50mm	4 Each
146	3.5mm Locking Compression Screw Length : 10mm, 12mm, 14mm, 16mm, 18mm, 20mm, 22mm, 24mm, 26mm, 28mm, 30mm, 32mm, 34mm, 36mm, 38mm, 40mm, 42mm, 44mm, 46mm, 48mm, 50mm, 52mm, 54mm, 56mm, 58mm, 60mm, 65mm, 70mm, 75mm, 80mm	6 Each
148	4mm Locking Cancellous Screws (Fully Thread) Length : 20mm, 22mm, 24mm, 26mm, 28mm, 30mm, 32mm, 34mm, 36mm, 38mm, 40mm, 45mm, 50mm, 55mm, 60mm, 65mm, 70mm, 75mm, 80mm	4 Each
131	4.0mm Cancellous Screws (Fully Thread) Length : 12mm, 14mm, 16mm, 18mm, 20mm, 22mm, 24mm, 26mm, 28mm, 30mm, 35mm, 40mm, 45mm, 50mm, 55mm, 60mm, 65mm, 70mm	2 Each
307	4.0mm Cannulated Screw (Full Thread) Length : 12mm, 14mm, 16mm, 18mm, 20mm, 22mm, 24mm, 26mm, 28mm, 30mm, 35mm, 40mm, 45mm, 50mm, 55mm, 60mm, 65mm, 70mm	2 Each



- **225** | 5.0mm Locking Compression Screw (Self Tapping)
- **466** | 5.0mm Locking Compression Screw (Self Tapping) (Star Head)

MATERIAL - Titanium / Stainless Steel

LENGTH - 14mm to 50mm (2mm Increment)
55mm to 110mm (5mm Increment)



- **226** | 6.5mm Locking Cancellous Screw (16mm Thread)

MATERIAL - Titanium / Stainless Steel

LENGTH - 25mm to 120mm (5mm Increment)



- **227** | 6.5mm Locking Cancellous Screw (32mm Thread)

MATERIAL - Titanium / Stainless Steel

LENGTH - 40mm to 120mm (5mm Increment)



- **228** | 6.5mm Locking Cancellous Screw (Full Thread)

MATERIAL - Titanium / Stainless Steel

LENGTH - 30mm to 120mm (5mm Increment)



- **244** | 5.5mm Locking Cancellous Screw (16mm Th.)
- **467** | 5.5mm Locking Cancellous Screw (16mm Th.) (Star Head)

MATERIAL - Titanium / Stainless Steel

LENGTH - 25mm to 100mm (5mm Increment)



- **245** | 5.5mm Locking Cancellous Screw (32mm Thread)
- **468** | 5.5mm Locking Cancellous Screw (32mm Thread) (Star Head)

MATERIAL - Titanium / Stainless Steel

LENGTH - 40mm to 105mm (5mm Increment)



- **246** | 5.5mm Locking Cancellous Screw (Full Thread)
- **469** | 5.5mm Locking Cancellous Screw (Full Thread) (Star Head)

MATERIAL - Titanium / Stainless Steel

LENGTH - 30mm to 110mm (5mm Increment)



- **322** | 6.5mm Locking Cannulated Screw (16mm Thread)

MATERIAL - Titanium / Stainless Steel

LENGTH - 30mm to 120mm (5mm Increment)



- **324** | 6.5mm Locking Cannulated Screw (32mm Thread)

MATERIAL - Titanium / Stainless Steel

LENGTH - 40mm to 120mm (5mm Increment)



- **325** | 6.5mm Locking Cannulated Screw (Full Thread)

MATERIAL - Titanium / Stainless Steel

LENGTH - 30mm to 120mm (5mm Increment)



- **229** | Narrow Locking Compression Plate 4.5mm/5.0mm

MATERIAL - Titanium / Stainless Steel

HOLES - 4, 5, 6, 7, 8, 9, 10, 11, 12, 14, 16, 18



- **230** | Broad Locking Compression Plate 4.5mm/5.0mm

MATERIAL - Titanium / Stainless Steel

HOLES - 4, 5, 6, 7, 8, 9, 10, 12, 14, 16, 18



- **231** | Locking Reconstruction Plate 4.5mm/5.0mm

MATERIAL - Titanium / Stainless Steel

HOLES - 4, 5, 6, 7, 8, 9, 10, 11, 12, 14, 16, 18, 20, 22



- **232** | Locking L-Buttress Plate 4.5/5.0mm (Left & Right)

MATERIAL - Titanium / Stainless Steel

HOLES - 3, 4, 5, 6, 7, 8, 9, 10, 11, 12



- **233** | Locking T-Buttress Plate 4.5/5.0mm

MATERIAL - Titanium / Stainless Steel

HOLES - 3, 4, 5, 6, 7, 8, 9, 10, 11, 12



- **234** | Locking T- Plate 4.5/5.0mm

MATERIAL - Titanium / Stainless Steel

HOLES - 3, 4, 5, 6, 7, 8, 9, 10, 11, 12



- **235** | Locking Lateral Tibia Plate (Left & Right)

MATERIAL - Titanium / Stainless Steel

HOLES - 4, 5, 6, 7, 8, 9, 10, 11, 13



- **236** | Locking Proximal Tibial Plate 4.5/5.0mm (Left & Right)

MATERIAL - Titanium / Stainless Steel

HOLES - 4, 5, 6, 7, 8, 9, 10, 11, 12, 14



• 237 | Locking Distal Femoral Plate 4.5/5.0mm (Left & Right)

MATERIAL - Titanium / Stainless Steel

HOLES - 5, 6, 7, 8, 9, 10, 11, 13



• 238 | Locking Condylar Buttress Plate (Left & Right)

MATERIAL - Titanium / Stainless Steel

HOLES - 5, 6, 7, 8, 9, 10, 11, 13, 15



• 239 | Locking Proximal Femoral Plate (Left & Right)

MATERIAL - Titanium / Stainless Steel

HOLES - 3, 4, 5, 6, 7, 8, 9, 10, 11, 12



• 239A | Locking Proximal Femoral Plate (head 4 hole) (Left & Right)

MATERIAL - Titanium / Stainless Steel

HOLES - 3, 4, 5, 6, 7, 8, 9, 10, 11, 12



• 241 | Locking Metaphyseal Plate 3.5mm/4.5mm/5.0mm

MATERIAL - Titanium / Stainless Steel

HOLES - (5+) 3, 4, 5, 6, 7, 8, 9, 10, 11, 12



• 243 | Locking Tomo Fix Plate 4.5mm

MATERIAL - Titanium / Stainless Steel

HOLES - Small / Standard



• 247 | Locking Medial Distal Femoral Plate 4.5/5.0mm (Left & Right)

MATERIAL - Titanium / Stainless Steel

HOLES - 5, 6, 7, 8, 9, 10, 11, 13



- **601.012** | Drill Bits 3.2mm x 195mm for Quick Coupling
- **601.013** | Drill Bits 3.5mm x 195mm for Quick Coupling
- **601.020** | Drill Bits 4.3mm x 225mm for Quick Coupling
- **601.028** | Drill Bits 4.5mm x 225mm for Quick Coupling



- **603.001** | Quick Coupling T Handle



- **603.045** | Tap 4.5mm Cortex Screw For Quick Coupling
- **603.065** | Tap 6.5mm Cancellous Screw For Quick Coupling



- **734.050** | Tap 5.0mm Locking Screw For Quick Coupling



- **606.045** | Counter Sink for 4.5mm



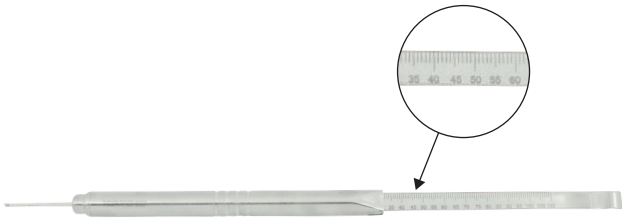
- **605A.045** | Universal Drill And Tap Sleeve 4.5/3.2mm
- **605.065** | Drill And Tap Sleeve 6.5/3.2mm



- **607.045** | DCP Drill Sleeve 4.5mm for use 3.2mm Drill



- **733.050** | LCP Drill Sleeve 5.0mm, For Drill Bits 4.3mm
- **733.065** | LCP Drill Sleeve 6.5mm, For Drill Bits 4.5mm



• **609.003** | Depth Gauge for 4.5mm to 6.5mm Screws
Length 100mm



• **610.002** | Screw Forceps Self-Holding



• **614.035** | Shaft for Hexagonal Screw Driver 3.5mm Tip for 5.0/6.5mm screws
• **614.T25** | Shaft for Star Screw Driver T25 Tip for 5.0/6.5mm screws



• **616.007** | Bending Pliers With Rolls



• **617.001** | Sharp Hook



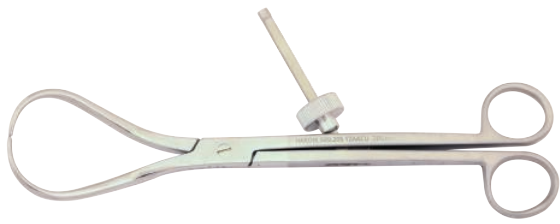
• **707.018** | Retractor 18mm Wide
• **707.024** | Retractor 24mm Wide



• **687.277** | Self-Centering Bone Holding Forceps
Length 277mm



• **688.255** | Reduction Forceps Serrated Jaws Length 255mm



• **689.205** | Reduction Forceps With Points Length 205mm



• **738.050** | LCP Plate Holder 4.5mm Length 120mm



• **612.011** | Quick Coupling Straight Handle



• **735.08** | Torque Limit Adapter 4.0 Nm



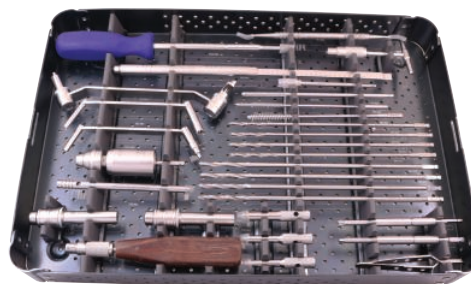
• **612A.035** | Screw Driver for Holding Sleeve 3.5mm Tip



• **613A.035** | Holding Sleeve for Locking screws 5.0mm
 • **613B.035** | Holding Sleeve for Non Locking screws 4.5mm



• **328B.18** | K Wire (Double Side Trocar Tip) 1.8mm x 150mm
 • **328B.20** | K Wire (Double Side Trocar Tip) 2.0mm x 150mm



Instruments

601.012	Drill Bits 3.2mm x 195mm for Quick Coupling	2 Each	733.065	LCP Drill Sleeve 6.5mm, For Drill Bits 4.5mm	1 Each
601.013	Drill Bits 3.5mm x 195mm for Quick Coupling	2 Each	609.003	Depth Gauge for 4.5mm to 6.5mm Screws	1 Each
601.020	Drill Bits 4.3mm x 225mm for Quick Coupling	2 Each	610.002	Screw Forceps Self-Holding	1 Each
601.028	Drill Bits 4.5mm x 225mm for Quick Coupling	2 Each	614.035	Shaft for Hexagonal Screw Driver 3.5mm Tip for 5.0/6.5mm screws	1 Each
603.001	Quick Coupling T Handle	1 Each	614.T25	Shaft for Star Screw Driver T25 Tip for 5.0/6.5mm screws	1 Each
603.045	Tap For 4.5mm Cortex Screw For Quick Coupling	1 Each	617.001	Sharp Hook	1 Each
603.065	Tap For 6.5mm LCP Cancellous Screw For Quick Coupling	1 Each	612.011	Quick Coupling Stright Handle	1 Each
734.050	Tap 5.0mm Locking Screw For Quick Coupling	1 Each	612A.035	Screw Driver for Holding Sleeve 3.5mm Tip	1 Each
606.045	Counter Sink for 4.5mm	1 Each	735.08	Torque Limit Adapter 4.0Nm	1 Each
605A.045	Universal Drill And Tap Sleeve 4.5/3.2mm	1 Each	613A.035	Holding Sleeve for Locking screws 5.0mm	1 Each
605.065	Drill And Tap Sleeve 6.5/3.2mm	1 Each	613B.035	Holding Sleeve for Non Locking screws 4.5mm	1 Each
607.045	DCP Drill Sleeve 4.5mm for use 3.2mm Drill	1 Each	738.050	LCP Plate Holder Length 120mm for 4.5mm Plate	1 Each
733.050	LCP Drill Sleeve 5.0mm, For Drill Bits 4.3mm	2 Each			

SAGC.73 Large Fragment Screw Set



Implants

225	5.0mm Locking Compression Screw (Self Tapping) Length : 14mm, 16mm, 18mm, 20mm, 22mm, 24mm, 26mm, 28mm, 30mm, 32mm, 34mm, 36mm, 38mm, 40mm, 42mm, 44mm, 46mm, 48mm, 50mm, 55mm, 60mm, 65mm, 70mm, 75mm, 80mm, 85mm, 90mm	3 Each
		5 Each
		3 Each
452	Cortex Screw 4.5mm (Self Tapping) Length : 14mm, 16mm, 18mm, 20mm, 22mm, 24mm,26mm, 28mm, 30mm, 32mm, 34mm, 36mm, 38mm, 40mm, 42mm, 44mm, 46mm, 48mm, 50mm, 55mm, 60mm, 65mm, 70mm, 75mm, 80mm	3 Each
		5 Each
		3 Each

Implant

244	5.5mm Locking Cancellous Screw (16mm Thread) Length : 30mm, 35mm, 40mm, 45mm, 50mm, 55mm, 60mm, 65mm, 70mm, 75mm, 80mm, 85mm, 90mm, 95mm, 100mm	2 Each
245	5.5mm Locking Cancellous Screw (32mm Thread) Length : 45mm, 50mm, 55mm, 60mm, 65mm, 70mm, 75mm, 80mm, 85mm, 90mm, 95mm, 100mm, 105mm	2 Each
246	5.5mm Locking Cancellous Screw (Full Thread) Length : 30mm, 35mm, 40mm, 45mm, 50mm, 55mm, 60mm, 65mm	2 Each
205	6.5mm Cancellous Screw (16mm Thread) Length : 30mm, 35mm, 40mm, 45mm, 50mm, 55mm, 60mm, 65mm, 70mm, 75mm, 80mm, 85mm, 90mm, 95mm, 100mm, 105mm, 110mm	2 Each
206	6.5mm Cancellous Screw (32mm Thread) Length : 45mm, 50mm, 55mm, 60mm, 65mm, 70mm, 75mm, 80mm, 85mm, 90mm, 95mm, 100mm, 105mm, 110mm, 115mm, 120mm	2 Each
201	Washer 13.0mm for Large Screws	5 Each



Instruments

601.012	Drill Bits 3.2mm x 195mm for Quick Coupling T Handle	2 Each
601.013	Drill Bits 3.5mm x 195mm for Quick Coupling T Handle	2 Each
601.020	Drill Bits 4.3mm x 225mm for Quick Coupling T Handle	2 Each
601.028	Drill Bits 4.5mm x 225mm for Quick Coupling T Handle	2 Each
603.001	Quick Coupling T Handle	1 Each
612.011	Quick Coupling Stright Handle	1 Each
603.045	Tap For 4.5mm Cortex Screw For Quick Coupling	1 Each
603.065	Tap 6.5mm Cancellous Screws for Quick Coupling	1 Each
734.050	Tap 5.0mm Locking Screw For Quick Coupling	1 Each
606.045	Counter Sink for 4.5mm	1 Each
605A.045	Universal Drill And Tap Sleeve 4.5/3.2mm	1 Each
605.065	Drill And Tap Sleeve 6.5/3.2mm	1 Each
607.045	DCP Drill Sleeve 4.5mm for use 3.2mm Drill	1 Each
733.050	LCP Drill Sleeve 5.0mm, For Drill Bits 4.3mm	4 Each
733.065	LCP Drill Sleeve 6.5mm, For Drill Bits 4.5mm	1 Each
609.003	Depth Gauge for 4.5mm to 6.5mm Screws	1 Each
610.002	Screw Forceps Self-Holding	1 Each
612A.035	Screw Driver for Holding Sleeve 3.5mm Tip	1 Each
735.08	Torque Limit Adapter 4.0Nm	1 Each
614.T25	Shaft for Star Screw Driver T25 Tip for 5.0/6.5mm screws	1 Each
614.035	Shaft for Hexagonal Screw Driver 3.5mm Tip for 5.0/6.5mm screws	1 Each
616.007	Bending Pliers With Rolls	1 Each
617.001	Sharp Hook	1 Each
707.018	Retractor Small 18mm Wide	2 Each
707.024	Retractor Small 24mm Wide	2 Each
687.277	Self-Centering Bone Holding Forceps Length 277mm	2 Each
688.255	Reduction Forceps Serrated Jaw Length 255mm	2 Each
689.205	Reduction Forceps With Points length 205mm	1 Each
738.050	LCP Plate Holder Length 120mm for 4.5mm Plate	1 Each
613A.035	Holding Sleeve for Locking screws 5.0mm	1 Each
613B.035	Holding Sleeve for Non Locking screws 4.5mm	1 Each
328B.18	K Wire (Double Side Trocar Tip) 1.8mm x 150mm	10 Each
328B.20	K Wire (Double Side Trocar Tip) 2.0mm x 150mm	10 Each

Implants

225	5.0mm Locking Compression Screw (Self Tapping) Length : 14mm, 16mm, 18mm, 20mm, 22mm, 24mm, 26mm, 28mm, 30mm, 32mm, 34mm, 36mm, 38mm, 40mm, 42mm, 44mm, 46mm, 48mm, 50mm, 55mm, 60mm, 65mm, 70mm, 75mm, 80mm, 85mm, 90mm	3 Each
452	Cortex Screw 4.5mm (Self Tapping) Length : 14mm, 16mm, 18mm, 20mm, 22mm, 24mm, 26mm, 28mm, 30mm, 32mm, 34mm, 36mm, 38mm, 40mm, 42mm, 44mm, 46mm, 48mm, 50mm, 55mm, 60mm, 65mm, 70mm, 75mm, 80mm	5 Each
244	5.5mm Locking Cancellous Screw (16mm Thread) Length : 30mm, 35mm, 40mm, 45mm, 50mm, 55mm, 60mm, 65mm	3 Each
245	5.5mm Locking Cancellous Screw (32mm Thread) Length : 45mm, 50mm, 55mm, 60mm, 65mm, 70mm, 75mm, 80mm, 85mm, 90mm, 95mm, 100mm, 105mm, 110mm	2 Each
246	5.5mm Locking Cancellous Screw (Full Thread) Length : 30mm, 35mm, 40mm, 45mm, 50mm, 55mm, 60mm, 65mm, 70mm, 75mm, 80mm, 85mm, 90mm, 95mm, 100mm, 105mm, 110mm	2 Each
205	6.5mm Cancellous Screw (16mm Thread) Length : 30mm, 35mm, 40mm, 45mm, 50mm, 55mm, 60mm, 65mm, 70mm, 75mm, 80mm, 85mm, 90mm, 95mm, 100mm, 105mm, 110mm	2 Each
206	6.5mm Cancellous Screw (32mm Thread) Length : 45mm, 50mm, 55mm, 60mm, 65mm, 70mm, 75mm, 80mm, 85mm, 90mm, 95mm, 100mm, 105mm, 110mm, 115mm, 120mm	2 Each
201	Washer 13.0mm for Large Screws	5 Each

SAGC.66 Large Locking Implant Set



- 229 Narrow Locking Compression Plate 4.5mm/5.0mm
Holes : 6, 7, 8, 9, 10, 11, 12, 14, 16 1 Each
- 230 Broad Locking Compression Plate 4.5mm/5.0mm
Holes : 7, 8, 9, 10, 12, 14, 16 1 Each
- 231 Locking Reconstruction Plate 4.5mm/5.0mm
Holes : 6, 7, 8, 9, 10, 11, 12, 14 1 Each

SAGC.67 Large Locking Tibia Implant Set



- 232 Locking L-Buttress Plate 4.5/5.0mm (Left & Right)
Holes : 4, 6, 8, 10, 12 1 Each
- 233 Locking T-Buttress Plate 4.5/5.0mm
Holes : 4, 6, 8, 10, 12 1 Each
- 234 Locking T- Plate 4.5/5.0mm
Holes : 4, 6, 8, 10, 12 1 Each
- 235 Locking Lateral Tibia Plate (Left & Right)
Holes : 5, 6, 7, 8, 9, 10, 11, 13 1 Each
- 236 Locking Proximal Tibia Plate 4.5/5.0mm (Left & Right)
Holes : 4, 6, 8, 10, 12, 14 1 Each
- 243 Locking Tomo Fix Plate 4.5mm
Holes : Small / Standard 1 Each

SAGC.68 Large Locking Femoral Implant Set



- 237 Locking Distal Femoral Plate 4.5/5.0mm (Left & Right)
Holes : 5, 7, 9, 11, 13 1 Each





Implants

- 202 4.5mm Cortex Screw
Length : 16mm, 18mm, 20mm, 22mm, 24mm, 26mm, 28mm, 30mm, 32mm, 34mm, 36mm, 38mm, 40mm, 42mm, 44mm, 46mm, 48mm, 50mm, 52mm, 54mm, 56mm, 58mm, 60mm, 65mm, 70mm, 75mm, 80mm, 85mm **5 Each**
- 225 5.0mm Locking Compression Screw (Self Tapping)
Length : 16mm, 18mm, 20mm, 22mm, 24mm, 26mm, 28mm, 30mm, 32mm, 34mm, 36mm, 38mm, 40mm, 42mm, 44mm, 46mm, 48mm, 50mm, 52mm, 54mm, 56mm, 58mm, 60mm, 65mm, 70mm, 75mm, 80mm, 85mm **5 Each**
- 244 5.5mm Locking Cancellous Screw (16mm Thread)
Length : 30mm, 35mm, 40mm, 45mm, 50mm, 55mm, 60mm, 65mm, 70mm, 75mm, 80mm, 85mm, 90mm, 95mm, 100mm **3 Each**
- 245 5.5mm Locking Cancellous Screw (32mm Thread)
Length : 45mm, 50mm, 55mm, 60mm, 65mm, 70mm, 75mm, 80mm, 85mm, 90mm, 95mm, 100mm, 105mm **3 Each**
- 246 5.5mm Locking Cancellous Screw (Full Thread)
Length : 25mm, 30mm, 35mm, 40mm, 45mm, 50mm, 55mm, 60mm, 65mm, 70mm, 75mm, 80mm, 85mm, 90mm, 95mm, 100mm **3 Each**

SAGC.76 4.5/5.0mm Large Implant & Instrument Set

PHOTO NOT AVAILABLE

Instruments

- 601.012 Drill Bits 3.2mm x 195mm for Quick Coupling T Handle **2 Each**
- 601.013 Drill Bits 3.5mm x 195mm for Quick Coupling T Handle **2 Each**
- 601.020 Drill Bits 4.3mm x 225mm for Quick Coupling T Handle **2 Each**
- 601.028 Drill Bits 4.5mm x 225mm for Quick Coupling T Handle **2 Each**
- 603.001 Quick Coupling T Handle **1 Each**
- 603.045 Tap For 4.5mm Cortex Screw For Quick Coupling **1 Each**
- 609.003 Depth Gauge for 4.5mm to 6.5mm Screws **1 Each**
- 612.035 Large Hexagonal Screw Driver 3.5mm Tip **1 Each**
- 735.03 Limit Screw Driver handle without shaft for 5.0/6.5mm screws **1 Each**
- 614.035 Shaft for Hexagonal Screw Driver 3.5mm Tip for 5.0/6.5mm screws **1 Each**
- 733.050 LCP Drill Sleeve 5.0mm For Drill Bits 4.3mm **2 Each**
- 733.065 LCP Drill Sleeve 6.5mm For Drill Bits 4.5mm **1 Each**

Implants

- 202 4.5mm Cortex Screw
Length : 16mm, 18mm, 20mm, 22mm, 24mm, 26mm, 28mm, 30mm, 32mm, 34mm, 36mm, 38mm, 40mm, 42mm, 44mm, 46mm, 48mm, 50mm, 55mm, 60mm, 65mm, 70mm, 75mm, 80mm, 85mm **5 Each**
- 225 5.0mm Locking Compression Screws (Self Tapping)
Length : 16mm, 18mm, 20mm, 22mm, 24mm, 26mm, 28mm, 30mm, 32mm, 34mm, 36mm, 38mm, 40mm, 42mm, 44mm, 46mm, 48mm, 50mm, 55mm, 60mm, 65mm, 70mm, 75mm, 80mm, 85mm **5 Each**
- 246 5.5mm Locking Cancellous Screw (Full Thread)
Length : 25mm, 30mm, 35mm, 40mm, 45mm, 50mm, 55mm, 60mm, 65mm, 70mm, 75mm, 80mm, 85mm, 90mm, 95mm, 100mm **3 Each**
- 325 6.5mm Locking Cannulated Screw (Full Thread)
Length : 30mm, 35mm, 40mm, 45mm, 50mm, 55mm, 60mm, 65mm, 70mm, 75mm, 80mm, 85mm, 90mm, 95mm, 100mm, 105mm, 110mm, 115mm, 120mm **2 Each**
- 312 6.5mm Cannulated Screw (Full Thread)
Length : 25mm, 30mm, 35mm, 40mm, 45mm, 50mm, 55mm, 60mm, 65mm, 70mm, 75mm, 80mm, 85mm, 90mm, 95mm, 100mm, 110mm, 115mm, 120mm **2 Each**



- 101 | Washer (Small Screws)

MATERIAL - Titanium / Stainless Steel
 SIZE - 7.0mm



- 125 | Washer (Small Screws)

MATERIAL - Titanium / Stainless Steel
 SIZE - 10.0mm



- 126 | 3.5mm Cortex Screw (20TPI)

MATERIAL - Titanium / Stainless Steel
 LENGTH - 10mm to 40mm (2mm Increment)
 45mm to 60mm (5mm Increment)



- 127 | 3.5mm Cortex Screw (14TPI)

MATERIAL - Titanium / Stainless Steel
 LENGTH - 10mm to 40mm (2mm Increment)
 45mm to 60mm (5mm Increment)



- 130 | 4.0mm Cancellous Screw (Short Thread)

MATERIAL - Titanium / Stainless Steel
 LENGTH - 12mm to 40mm (2mm Increment)
 45mm to 70mm (5mm Increment)



- 131 | 4.0mm Cancellous Screw (Fully Thread)

MATERIAL - Titanium / Stainless Steel
 LENGTH - 12mm to 50mm (2mm Increment)
 55mm to 70mm (5mm Increment)



- 451 | Cortex Screw 3.5mm (Self Tapping)

MATERIAL - Titanium / Stainless Steel
 LENGTH - 10mm to 40mm (2mm Increment)
 45mm to 70mm (5mm Increment)



- 075 | 2.7mm Cortex Screw (Self Tapping)

- 076 | 2.7mm Cortex Screw

MATERIAL - Titanium / Stainless Steel
 LENGTH - 08mm to 30mm (2mm Increment)
 35mm to 40mm (5mm Increment)



- **460** | Cortex Screw 3.5mm (Self Tapping) (Stare Head)

MATERIAL - Titanium / Stainless Steel

LENGTH - 12mm to 40mm (2mm Increment)
45mm to 70mm (5mm Increment)



- **458** | 2.7mm Cortex Screw (Self Tapping) (Stare Head)

MATERIAL - Titanium / Stainless Steel

LENGTH - 12mm to 30mm (2mm Increment)
35mm to 40mm (5mm Increment)



- **463** | 4.0mm Cancellous Screw (Short Thread) (Star Head)

MATERIAL - Titanium / Stainless Steel

LENGTH - 20mm to 30mm (2mm Increment)
35mm to 55mm (5mm Increment)



- **464** | 4.0mm Cancellous Screw (Full Thread) (Star Head)

MATERIAL - Titanium / Stainless Steel

LENGTH - 20mm to 30mm (2mm Increment)
35mm to 85mm (5mm Increment)



- **459** | 2.4mm Cortex Screw (Self Tapping) (Star Head)

MATERIAL - Titanium / Stainless Steel

LENGTH - 12mm to 40mm (2mm Increment)



- 077 | 2.7mm Reconstruction Straight Plate

MATERIAL - Titanium / Stainless Steel
HOLES - 4, 5, 6, 7, 8, 9, 10, 12, 14, 16, 18, 20



- 078 | 2.7mm DCP

MATERIAL - Titanium / Stainless Steel
HOLES - 2, 3, 4, 5, 6, 7, 8, 10



- 102 | 2.7mm Quarter Tubular Plate

MATERIAL - Titanium / Stainless Steel
HOLES - 4, 5, 6, 7, 8



- 103 | 2.7mm L - Plate (Left & Right)

MATERIAL - Titanium / Stainless Steel
HOLES - 2+2, 2+3, 2+4



- 104 | 2.7mm T Plate

MATERIAL - Titanium / Stainless Steel
HOLES - 2+2, 2+3, 2+6



- 133 | One - Third Tubular Plate 3.5mm

MATERIAL - Titanium / Stainless Steel
HOLES - 4, 5, 6, 7, 8, 9, 10, 12



- 135 | Small DCP 3.5mm

MATERIAL - Titanium / Stainless Steel
HOLES - 4, 5, 6, 7, 8, 9, 10, 12, 14, 15, 16



- 136 | Small LC-DCP 3.5mm

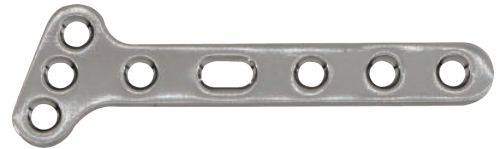
MATERIAL - Titanium / Stainless Steel
HOLES - 4, 5, 6, 7, 8, 9, 10, 12, 14

Non-Locking Implants



• 138 | Small T Plate, Right Angled 3.5mm

MATERIAL - Titanium / Stainless Steel
HOLES - 3, 4, 5, 6, 7, 8, 9, 10



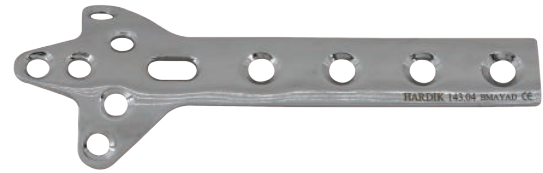
• 139 | Small T Plate, Oblique Angled 3.5mm

MATERIAL - Titanium / Stainless Steel
HOLES - 3, 4, 5, 6, 7, 8, 9, 10



• 141 | Reconstruction Plate Straight 3.5mm (DC Hole)

MATERIAL - Titanium / Stainless Steel
HOLES - 4, 5, 6, 7, 8, 9, 10, 11, 12, 14, 16, 18, 20, 22



• 143 | Cloverleaf Plate 3.5mm

MATERIAL - Titanium / Stainless Steel
HOLES - 3, 4, 5, 6, 7, 8, 9, 10, 11, 12



• 145 | Reconstruction Plate 3.5mm (Thin) Round Hole

MATERIAL - Titanium / Stainless Steel
HOLES - 4, 5, 6, 7, 8, 9, 10, 12, 14, 16, 18, 20, 22, 24



• 453 | Pelvic Reconstruction Plate 3.5mm Curved

MATERIAL - Titanium / Stainless Steel
HOLES - 6, 7, 8, 9, 10, 12, 14, 16, 18, 20



• 142 | Small Hook Plate 3.5mm

MATERIAL - Stainless Steel
HOLES - 4, 5, 6, 7, 8, 10



• 144 | Calcaneal Plate 3.5mm

MATERIAL - Stainless Steel
HOLES - Small, Medium, Large



• 140 | Small T Plate, Right Angled 3.5mm (Head 4hole)

MATERIAL - Titanium / Stainless Steel
HOLES - 3, 4, 5, 6, 7, 8

Non-Locking Implants



- **201** | Washer (Large Screws)

MATERIAL - Titanium / Stainless Steel

SIZE - 13.0mm



- **202** | 4.5mm Cortex Screw
- **465** | 4.5mm Cortex Screw (Star Head)

MATERIAL - Titanium / Stainless Steel

LENGTH - 14mm to 50mm (2mm Increment)
55mm to 95mm (5mm Increment)



- **452** | Cortex Screw 4.5mm (Self Tapping)

MATERIAL - Titanium / Stainless Steel

LENGTH - 14mm to 50mm (2mm Increment)
55mm to 95mm (5mm Increment)



- **204** | 4.5mm Malleolar Screw

MATERIAL - Titanium / Stainless Steel

LENGTH - 20mm to 110mm (5mm Increment)



- **205** | 6.5mm Cancellous Screw (16mm Thread)

MATERIAL - Titanium / Stainless Steel

LENGTH - 25mm to 120mm (5mm Increment)



- **206** | 6.5mm Cancellous Screw (32mm Thread)

MATERIAL - Titanium / Stainless Steel

LENGTH - 40mm to 120mm (5mm Increment)



- **207** | 6.5mm Cancellous Screw (Full Thread)

MATERIAL - Titanium / Stainless Steel

LENGTH - 20mm to 120mm (5mm Increment)



• 210 | Narrow DCP 4.5mm

MATERIAL - Titanium / Stainless Steel
HOLES - 4, 5, 6, 7, 8, 9, 10, 11, 12, 14, 16



• 211 | Narrow LC-DCP 4.5mm

MATERIAL - Titanium / Stainless Steel
HOLES - 4, 5, 6, 7, 8, 9, 10, 11, 12, 14, 16



• 213 | Broad DCP 4.5mm

MATERIAL - Titanium / Stainless Steel
HOLES - 5, 6, 7, 8, 9, 10, 11, 12, 13, 14, 16, 18



• 214 | Broad LC-DCP 4.5mm

MATERIAL - Titanium / Stainless Steel
HOLES - 4, 5, 6, 7, 8, 9, 10, 11, 12, 14, 16



• 215 | T-Buttress Plate 4.5mm

MATERIAL - Titanium / Stainless Steel
HOLES - 3, 4, 5, 6, 7, 8, 9, 10, 12, 14



• 216 | T-Plate 4.5mm

MATERIAL - Titanium / Stainless Steel
HOLES - 3, 4, 5, 6, 7, 8, 9, 10, 12, 14



• 217 | L-Buttress Plate 4.5mm (Left & Right)

MATERIAL - Titanium / Stainless Steel
HOLES - 3, 4, 5, 6, 7, 8, 9, 10, 12, 14



• 220 | Lateral Tibial Head Buttress Plate 4.5mm (Left & Right)

MATERIAL - Titanium / Stainless Steel
HOLES - 5, 6, 7, 8, 9, 10, 11, 12, 13



• 221 | Condylar Buttress Plate 4.5mm (Left & Right)

MATERIAL - Titanium / Stainless Steel
HOLES - 5, 6, 7, 8, 9, 10, 11, 13, 15



• 224 | Straight Reconstruction Plate (DC Hole) 4.5mm

MATERIAL - Titanium / Stainless Steel
HOLE - 4, 5, 6, 7, 8, 9, 10, 12, 14, 16



• 222 | Cobra Head Plate 4.5mm

MATERIAL - Titanium / Stainless Steel
HOLES - 6, 7, 8, 9, 10, 11, 12,



• 484 | Straight Reconstruction Plate 4.5mm (Thin)

MATERIAL - Titanium / Stainless Steel
HOLE - 4, 5, 6, 7, 8, 9, 10, 12, 14, 16, 18, 20, 22, 24