

# Planmeca ProX™

Flexible intraoral X-ray unit

*Our advanced Planmeca ProX™ unit provides easy and precise positioning, a straightforward imaging process and top-quality images in high resolution. It is a highly beneficial and effective 2D imaging option for all dental clinics, making intraoral imaging easier and more reliable than ever.*

## The premium intraoral X-ray unit

- Optimal images for all diagnostic needs: variable kV and mA
- Quick and easy to use: pre-programmed quick settings, practical design
- Digital-ready
- Integration with the Planmeca ProSensor® HD intraoral sensor
- Smooth workflow with the Planmeca Romexis® software
- Versatile installation options

## Highly adaptable imaging

Planmeca ProX™ adapts to both short-cone and long-cone imaging. For maximum radiation hygiene, an additional rectangular collimator can be adapted to the long cone. The steady X-ray unit arm provides accurate and drift-free positioning of the lightweight tube head.

## Quick imaging parameter settings

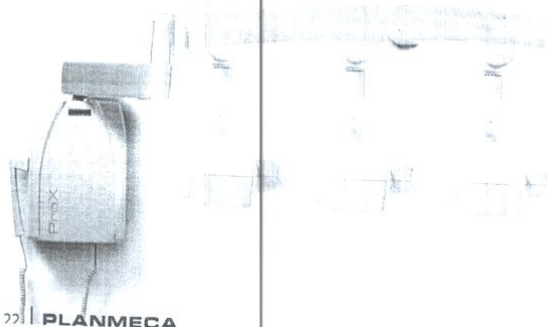
Planmeca ProX comes pre-programmed with quick settings for different exposure value combinations. Imaging parameters are automatically retrieved according to the selected exposure region and diagnostic need. Values can also be manually adjusted if necessary. Simply select the image receptor to automatically adapt the pre-programmed settings for film, imaging plate or digital sensors – allowing rapid transition to new imaging technologies without reprogramming.

## Faster X-ray examinations with digital sensor

Benefit from the the most user-friendly intraoral imaging by combining Planmeca ProX with the Planmeca ProSensor HD intraoral sensor. The captured image is displayed on the screen just seconds after exposure, significantly reducing the time needed for an intraoral X-ray examination compared to conventional film.

## Numerous installation options

As every dental clinic is different, it is important to offer various ways to integrate equipment. Planmeca ProX can be installed to match the individual layout and workflow of any type of clinic.





# Planmeca ProSensor® HD

Innovative intraoral sensor

*Our innovative Planmeca ProSensor® HD intraoral sensor offers a unique combination of unparalleled image quality, patient-centred design, and usability. The sensor has been designed to last and provides durability that can be counted on.*

## Cutting-edge image quality

With a true resolution of over 20 lp/mm, Planmeca ProSensor® HD offers real HD image quality. Supporting detailed diagnosis, the advanced imaging sensor with a fibre-optic layer captures sharp, low-noise and high contrast images. The wide dynamic range of the sensor ensures successful results each and every time.

## Patient-centred design

To fulfill all intraoral imaging needs, Planmeca ProSensor HD is available in three different sizes. The rounded sensor edges make procedures comfortable for patients, with outstanding images ready in a matter of seconds.

## Intraoral X-ray unit integration

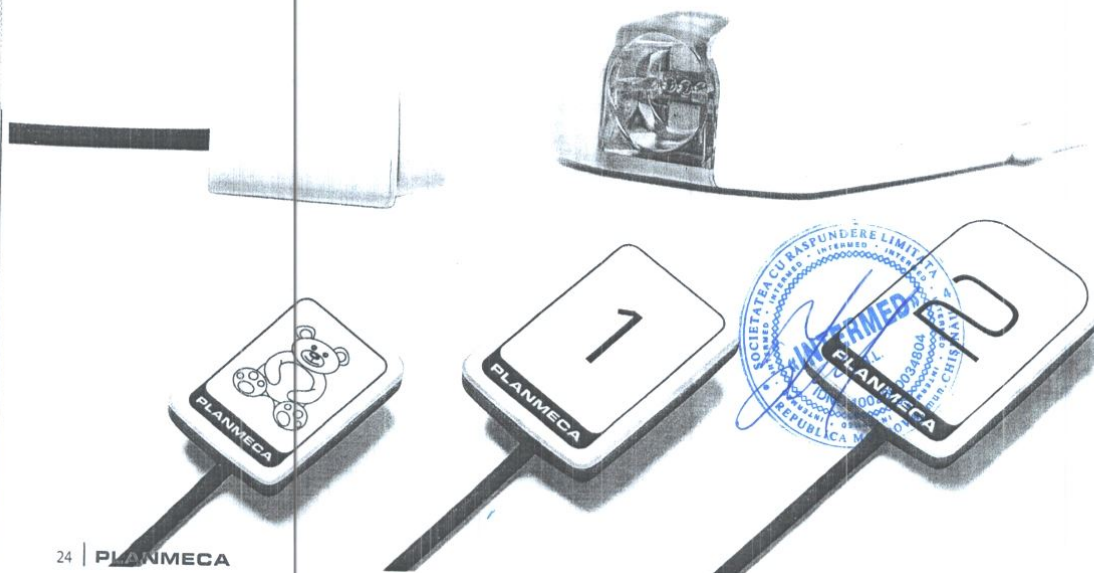
The seamless integration of Planmeca ProSensor HD with the Planmeca ProX™ intraoral X-ray unit ensures convenience and efficiency at every step. The sensor is easy to connect using just one hand.

## High-end usability

The intraoral sensor's magnetic connector makes it easy to attach, with its white colour enhancing visibility to further ease positioning. The sensor's elegant control box is equipped with a colour-coded LED light that provides instant visual feedback of the imaging procedure, while its hermetically sealed housing ensures effective infection control.

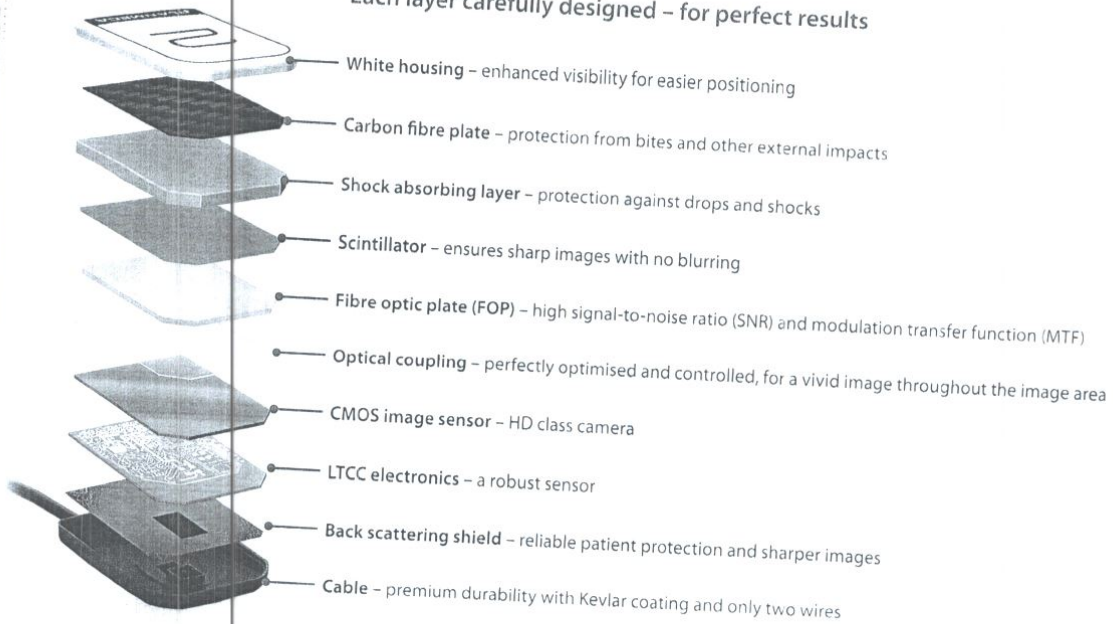
## Carefree choice

Intraoral sensors are naturally subject to wear and tear in daily use, but Planmeca ProSensor HD has been built to last. The sensor's carbon fibre plate prevents bite marks, its shock protection layer guards against minor damage, and its strengthened cable further improves durability.



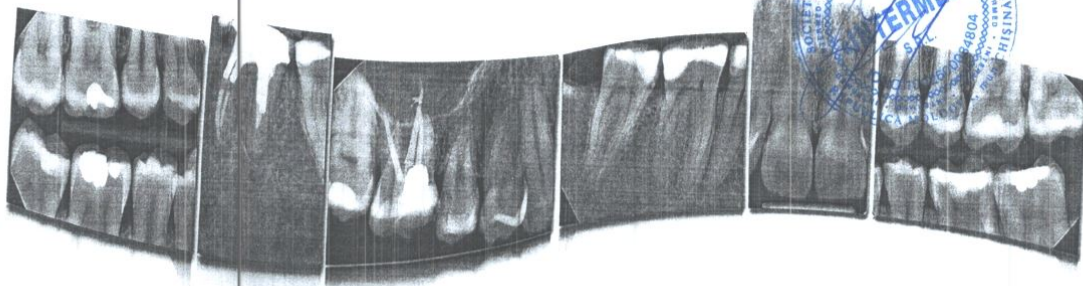


Each layer carefully designed – for perfect results



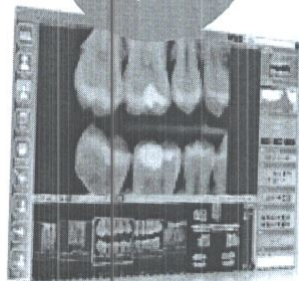
#### Planmeca ProSensor® HD in a nutshell

- True resolution of over 20 lp/mm
- Sharp and low-noise images with high contrast
- Wide dynamic range
- Three sensor sizes with rounded edges
- Magnetic connector for ease of use
- Colour-coded LED light on control box for instant visual feedback
- Integration with the Planmeca ProX intraoral X-ray unit
- Fully compatible with Windows and Mac
- Plug and play USB version
- Five-year warranty program – two years upon registering the product with the opportunity to purchase three additional years



# Planmeca ProSensor® HD

Mac OS and  
Windows  
compatible



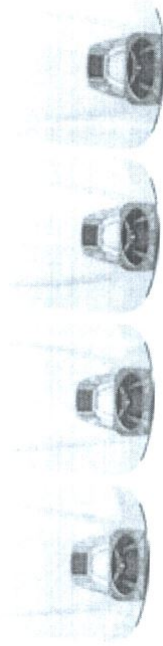
ENGLISH

PLANMECA



# Experience usability like never before

*Our innovative Planmeca ProSensor® HD intraoral sensor offers a unique combination of unparalleled image quality, high-end patient-centred design, and usability. It sets a new standard for intraoral dental imaging – ensuring successful results and a smooth workflow in all treatment situations.*



## Cutting-edge image quality

With a true resolution of over 20 lp/mm, Planmeca ProSensor® HD offers real HD image quality. Supporting detailed diagnosis, the advanced imaging sensor with a fibre-optic layer captures sharp, low-noise and high contrast images. The wide dynamic range of the sensor ensures successful results each and every time.

## Patient-centred design

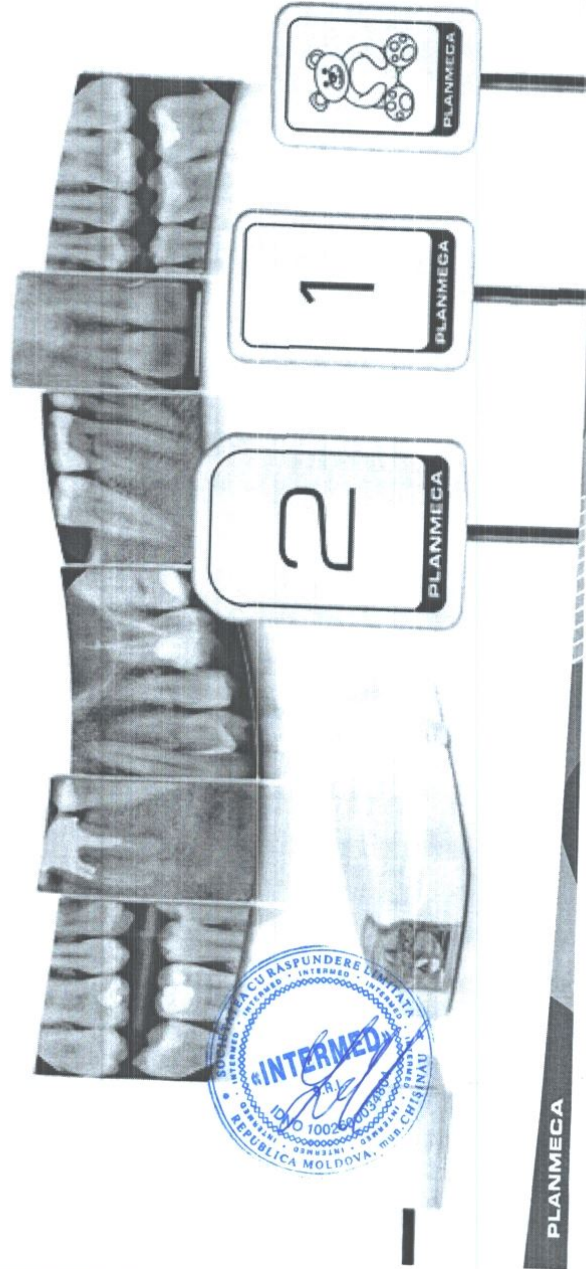
To fulfill all intraoral imaging needs, Planmeca ProSensor HD is available in three different sizes. The rounded sensor edges make the procedure comfortable for patients and outstanding images are ready in a matter of seconds.

## Usability comes as a standard

Planmeca ProSensor HD is always easily at hand. It can be integrated into the Planmeca ProX™ intraoral X-ray unit, or connected to through Ethernet or a USB port. The sensor has a sophisticated magnetic connector that is easy to attach with only one hand, while the white sensor colour enhances visibility to ease positioning. The elegant control box with a distinguished design is equipped with a colour-coded LED light, providing instant visual feedback of the imaging procedure. Hermetically sealed housing ensures effective infection control.

## Carefree choice

Planmeca ProSensor HD has been designed to last. For optimal endurance, the sensor cable has been reinforced and includes only two wires. Our special five-year warranty program ensures a safe investment for your practice.



PLANMECA

PLANMECA



### Planmeca ProSensor® HD in a nutshell

- True resolution of over 20 lp/mm
- Sharp and low-noise images with high contrast
- Wide dynamic range
- Three sensor sizes with rounded edges
- Magnetic connector for ease of use
- Colour-coded LED light on control box for instant visual feedback
- Hermetically sealed housing ensures effective infection control
- Integration with the Planmeca ProX™ X-ray unit
- Fully compatible with Windows and Mac OS
- Plug and play USB version
- Five-year warranty program
- Planmeca Romexis® software provides the most versatile tools



### Technical data

	Size 0	Size 1	Size 2
Sensor size	33.6 x 23.4 mm (1.33 x 0.92 in.)	39.7 x 25.1 mm (1.56 x 0.99 in.)	44.1 x 30.4 mm (1.76 x 1.2 in.)
Active area	25.5 x 18.9 mm (1.0 x 0.74 in.)	30.6 x 20.7 mm (1.20 x 0.81 in.)	36 x 26.1 mm (1.42 x 1.03 in.)
Number of pixels, normal	850 x 629 px	1020 x 690 px	1200 x 870 px
Number of pixels, high	-	2040 x 1380 px	2400 x 1740 px
Pixel size, normal	30 µm x 30 µm		
Pixel size, high	15 µm x 15 µm		
Theoretical resolution	33 lp/mm		
Resolution, normal	17 lp/mm		
Resolution, high	>20 lp/mm		
Interface	USB or Ethernet		
View delay	<5 sec.		

## PLANMECA

Asentajankatu 6 | 00880 Helsinki | Finland | tel. +358 20 7795 500 | sales@planmeca.com | www.planmeca.com

Images may contain optional items not included in standard delivery. Available configurations and features may have country or area specific variations. Some products displayed above may not be available in all countries or areas. Rights for changes reserved.

Planmeca, All in one, Anatomat Plus, Cobra, Comfy, DentoVac, Digital perfection, Economat Plus, Elegant, Flexy, Mini-dent, Perio Fresh, PlanEasyMill, Planmeca 4D, Planmeca AINQ, Planmeca ARA, Planmeca CAD/CAM, Planmeca Chair, Planmeca Clarify, Planmeca Compact, Planmeca FIT, Planmeca Intra, Planmeca Lumon, Planmeca Lumo, Planmeca Maxxity, Planmeca Minica, Planmeca Minendo, Planmeca Minetto, Planmeca mKromexis, Planmeca Norma, Planmeca Online, Planmeca PlanCAD, Planmeca PlanLAM, Planmeca PlanClear, Planmeca PlanMill, Planmeca Planosil, Planmeca PlanPure, Planmeca PlanScan, Planmeca ProCeph, Planmeca ProFace, Planmeca Pro ID, Planmeca ProMax, Planmeca ProModel, Planmeca ProOne, Planmeca ProScanner, Planmeca ProSensor, Planmeca ProX, Planmeca Romexis, Planmeca Serenus, Planmeca Single ID, Planmeca Sveresign, Planmeca Ultra Low Dose, Planmeca Vision, Planmeca Verity, Planmeca Waterline Cleaning System, Planmeca Xtenity, Proline Dental Stool, ProTouch, X-Lite Mop, SmartSign, SmartTouch, Trendy and Ultra Relax are registered or non-registered trademarks of Planmeca in various countries.

