

SHANTUI

DH13-C3

Crawler Bulldozer



ENGINE MODEL Cummins QSB6.7
GROSS POWER 116kW(155hp)/2000rpm
OPERATING WEIGHT 13,400kg

VALUE THAT WORKS

DH13-C3 TECHNICAL PARAMETERS

ENGINE	
Engine	Cummins QSB6.7
Emission standard	Stage IIIA
Rated speed	2000rpm
Gross power	116kW(155hp)
Net power	103kW(138hp)
Piston displacement	6.7L
Maximum Torque	622N.m/1500rpm

TRANSMISSION SYSTEM	
Transmission system	Dual-circuit electronically controlled hydrostatic drive, intelligent matching of load changes
System overflow pressure	43500kPa
Travel speed	Forward speed 0-10km/h Reverse speed 0-10km/h
Traction force	212kN
Steering clutch	Differential steering of hydraulic motor, pivot steering, load steering
Steering brake	Normally closed brake
FINAL DRIVE	Reduction of single spur gear + reduction of single planetary gear

CHASSIS SYSTEM	XL	LGP
Type	Semi-rigid suspension structure	Semi-rigid suspension structure
Track form	Single-tooth dry-type	Single-tooth dry-type
Center distance of crawler	1780mm	2000mm
Width of track shoe	560mm	760/7000mm
Length of track on ground	2640mm	2640mm
Track grounding area	29568cm ²	40128/36960cm ²
Number of Crawler Sections	40	40
Specific pressure to ground (standard configuration)	45.3kPa	34kPa
Number of carrier roller	2/side	2/side
Quantity of thrust wheels	7/side	7/side
Chain rail pitch	190mm	190mm

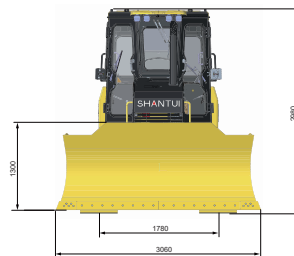
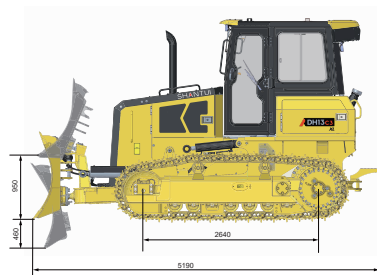
MAINTENANCE CAPACITY	XL	LGP
Fuel tank capacity	275L	275L
Coolant liquid capacity	26L	26L
Engine oil capacity	16.5L	16.5L
Hydraulic fuel tank	66L	66L
Final drive	19L/one side	19L/one side

OPERATING WEIGHT	XL	LGP
Equipped with cab + traction frame	13400kg	14000kg
Equipped with cab + ripper	14600kg	-

BLADE	XL	LGP
Blade Type	PAT	PAT
Blade capacity	3.07m ³	3.39m ³

DIMENSIONS	XL	LGP
Height of complete machine (excluding ROPS)	2988mm	3047mm
Grouser height	50mm	50mm
Ground clearance	365mm	360mm
Overall length of complete machine (including traction frame)	5190mm	5190mm
Overall length of complete machine (excluding traction frame)	-	-
Maximum Lifting Height of Blade	950mm	950mm
Maximum penetrating depth of blade	460mm	460mm
Inclination angle of blade	55°±3°	55°±3°
Blade length	3060mm	3530mm
Blade height	1300mm	1300mm
Maximum swing angle of blade	25°	25°
Overall Width: At maximum swing angle of blade	2783mm	3200mm
Blade tilt height	460mm	510mm
The maximum swing angle refers to projection distance from left blade angle to track	16mm	14mm
Track width at both ends	2340mm	2760mm
The maximum swing angle refers to projection distance from right blade angle to track	427mm	424mm

RIPPER	XL	LGP
Type	Three-shank ripper	Three-shank ripper
Penetrating depth	500mm	500mm
Lifting height	600mm	600mm
Ripper length (deepest ripping position)	1600mm	1600mm
Ripper length (highest lifting position)	1230mm	1230mm
Ripper width	1759mm	1759mm
Tooth width	1696mm	1696mm
Tooth spacing	800mm	800mm



* THE SPECIFICATIONS ARE SUBJECT TO CHANGE WITHOUT NOTICE. THE PICTURES MAY INCLUDE OPTIONAL CONFIGURATION. THE ACTUAL COLOR & APPEARANCE OF THE PRODUCT MAY DIFFER FROM WHAT IS SHOWN.



Shantui Social

SHANTUI CONSTRUCTION MACHINERY CO., LTD.

ADD: NO. 58, G327 HIGHWAY, HI-TECH ZONE, JINING CITY, SHANDONG, CHINA

TEL: +86-537-2909369 FAX: +86-537-2311219

EMAIL: trade@shantui.com WEB: www.shantui.com

SHANTUI
VALUE THAT WORKS