

medical gas equipment

Products Catalog



md[®]
www.md-srl.it

ACCESSORIES FOR OXYGEN THERAPY AND SUCTION

- ▶ Flow meters for oxygen therapy
- ▶ Humidifiers for flow meters
- ▶ Vacuum regulatores
- ▶ Collection jars for suction
- ▶ Microbiological filters
- ▶ Hose assembly
- ▶ Rail and wall installation systems for accessories
- ▶ Low pressure hoses

Language version:





Flow meters for oxygen therapy

IDENTIFICATION

- ▶ Flow meters for oxygen and medical air supply
- ▶ Body in chrome-plated brass
- ▶ Supplied in single or double version
- ▶ To be completed with male probe available in most diffused international standards
- ▶ Filter positioned at the tube inlet for patient and flow meter protection
- ▶ Adjustment of gas flow by means of hand-knob
- ▶ Instant reading of the distributed flow rate by means of the graduated scale on the tube (expanded scale for 0 l/min to 5 l/m)
- ▶ Laser-engraved production lot and product code on the flow meter body



CE MARKING

Flow meters:

Notified body 0426

CE marking in risk class II A in accordance with Legislative Decree 24 February 1997, no. 46 "Implementation of Directive 93/42/EEC, concerning Medical Devices" and further modifications

Probes:

Refer to the "Terminal Units" datasheet, "Outlet probes for terminal units" section

REFERENCE STANDARDS

ISO 15002: "Flow-metering devices for connection to terminal units of medical gas pipeline systems"

ISO 15001: "Anaesthetic and respiratory equipment. Compatibility with oxygen"

HTM 02-01: "Medical gas pipeline systems"

*Validity of the standards is referred to the current year



- ▶ Gases: Oxygen, Air, CO₂
- ▶ Measurement scale: 0 ÷ 15 l/min
- ▶ Measurement precision: ± 10%
- ▶ Maximum flow rate: 20 l/min
- ▶ Pressure source limits:
Pmin = 400 kPa; Pmax = 500 kPa
- ▶ Working temperature: +10 °C ÷ +40 °C

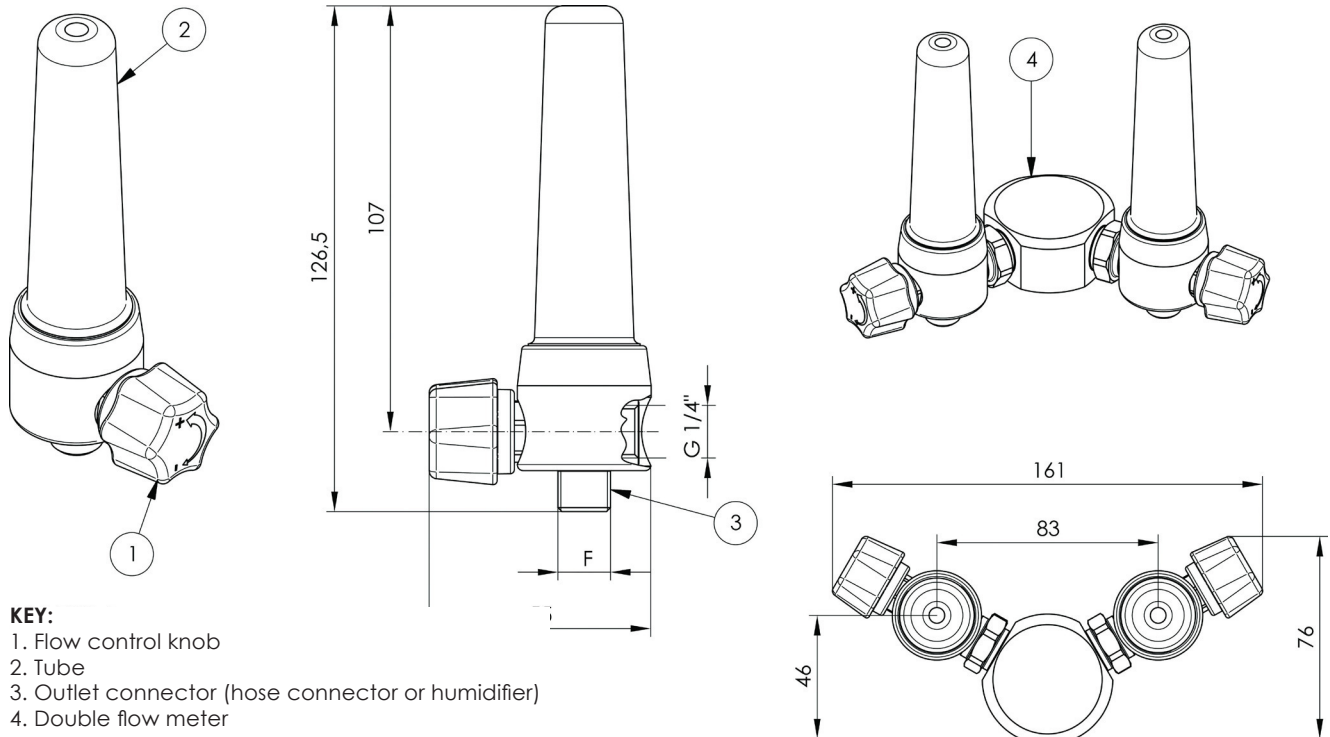
- ▶ Storage temperature: -20 °C ÷ +60 °C
- ▶ Humidifier connection fitting: 1/4" autoclavable humidifier; 9/16" disposable humidifier
- ▶ Resolution: 0.5 l/min between 0 and 6 l/min
- ▶ Resolution: 1 l/min between 6 l/min and 15 l/min
- ▶ Sintered inlet filter with 24 µm mesh
- ▶ Probe connection fitting: G1/4" F





Flow meters for oxygen therapy

DIMENSIONS

**KEY:**

- 1. Flow control knob
- 2. Tube
- 3. Outlet connector (hose connector or humidifier)
- 4. Double flow meter

FLOW METERS

VERSION	GASES	CODE	OUTLET CONNECTION	PACKAGING		
				type	kg	pcs
Single Flow meter	Oxygen	PF-2600-14O2	G 1/4"	box	0.21	1
		PF-2600-96O2	9/16"	box		
	Medical Air	PF-2600-14AC	G 1/4"	box	0.21	1
		PF-2600-96AC	9/16"	box		
Double Flow meter	Carbon Dioxide	PF-2600-14CO	G 1/4"	box	0.21	1
		PF-2600-96CO	9/16"	box		
	Oxygen	PF-2610-14O2	G 1/4"	box	0.51	1
		PF-2610-96O2	9/16"	box		
	Medical Air	PF-2610-14AC	G 1/4"	box	0.51	1
		PF-2610-96AC	9/16"	box		
	Carbon Dioxide	PF-2610-14CO	G 1/4"	box	0.51	1
		PF-2610-96CO	9/16"	box		

PROBES FOR FLOW METERS

GASES	CODES / REFERENCE STANDARD			
	AFNOR NF S 90-116	UNI 9507	DIN 13260-2	BS 5682
Oxygen	PF-06AF-20O2	PF-06UF-20O2	PF-06DF-20O2	PF-06BF-20O2
Medical Air	PF-06AF-20AC	PF-06UF-20AC	PF-06DF-20AC	PF-06BF-20AC
Carbon Dioxide	PF-06AF-2CO2	PF-06UF-2CO2	PF-06DF-2CO2	-





Humidifiers for flow meters for oxygen therapy

IDENTIFICATION

- ▶ Humidifier for oxygen therapy designed to contain demineralized water used to increase the relative humidity of the oxygen supplied to the patient
- ▶ Autoclavable polycarbonate jar
- ▶ Autoclavable plastic cap
- ▶ Internal silicone rubber tube complete with filter for diffusion of oxygen in the water
- ▶ Hose connector on humidifier cap for connection to patient administration devices (masks, nasal catheters...)
- ▶ Indication of water filling limit and safety information
- ▶ Latex-safe humidifier assembly

CE MARKING

Notified body 0426

CE marking in risk class II A in accordance with Legislative Decree 24 February 1997, no. 46 "Implementation of Directive 93/42/EEC, concerning Medical Devices" and further modifications

REFERENCE STANDARDS

UNI 11341: "Bubbling humidifiers for medical use - fundamental requirements"

HTM 02-01: "Medical gas pipeline systems"

*Validity of the standards is referred to the current year



- ▶ Capacity: 250 cc
- ▶ Connection with flow meter via nickel-plated brass union with G 1/4" or 9/16" fitting
- ▶ Maximum pressure: 500 kPa
- ▶ Maximum flow rate: 20 l/min
- ▶ Sterilizable in autoclave at 121 °C
- ▶ Time for sterilization cycle: 20 minutes

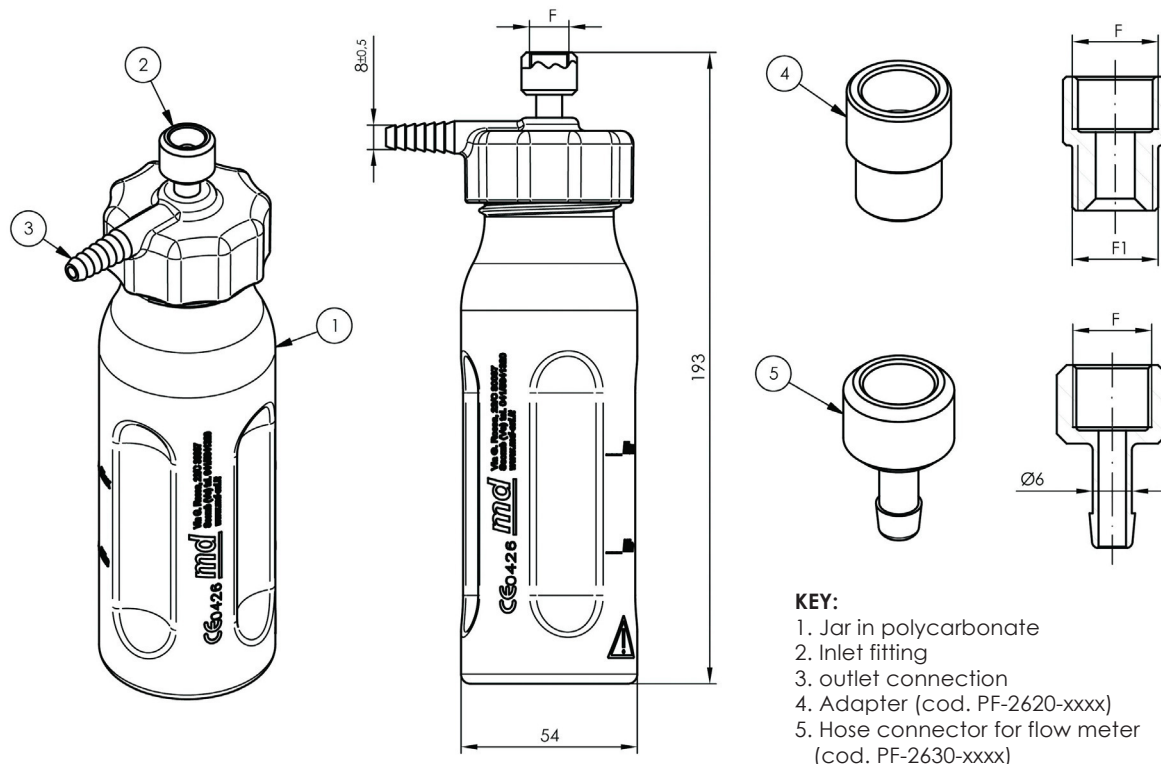




Humidifiers for flow meters for oxygen therapy



DIMENSIONS



KEY:

- 1. Jar in polycarbonate
- 2. Inlet fitting
- 3. outlet connection
- 4. Adapter (cod. PF-2620-xxxx)
- 5. Hose connector for flow meter (cod. PF-2630-xxxx)

CODE	DESCRIPTION	F	F1	PACKAGING	
				type	kg
PF-270P-0000	Humidifier with G 1/4" connection	G 1/4"	–	bag	0.11
PF-270P-0916	Humidifier with 9/16" connection	9/16"	–	bag	0.11
PF-2620-9600	G 1/4" – 9/16" Adapter for flow meter	G 1/4"	9/16"	bag	0.02
PF-2620-1400	9/16" – G 1/4" Adapter for flow meter	9/16"	G 1/4"	bag	0.02
PF-2630-1400	G 1/4" Hose connector for flow meter	G 1/4"	–	bag	0.02
PF-2630-9600	9/16" Hose connector for flow meter	9/16"	–	bag	0.02





Vacuum regulators

IDENTIFICATION

- ▶ Vacuum regulators for adjusting the vacuum level for endocavitary suction
- ▶ Depression level controlled by means of the front knob
- ▶ A lateral lever allows the functioning of following modes: 1 ON fully open (maximum suction), 2 OFF no suction, 3 REG flow rate tuned
- ▶ Available in scale 0-250 l/min, 0-600 l/min, 0-1000 l/min
- ▶ Gauge protected by a compact housing
- ▶ Direct connection to the terminal unit or on medical rail (with kit KT-0400-000V)
- ▶ Quick connection safety jar with hose connector on cap for connection to tubings
- ▶ Available in different colours on request
- ▶ Laser engraved marking of production lot product code and production date (month and year)

CE MARKING

Vacuum regulator and Hose holder:

Notified body 0426

CE marking in risk class II A in accordance with Legislative Decree 24 February 1997, no. 46 "Implementation of Directive 93/42/EEC, concerning Medical Devices" and further modifications

Probes:

Refer to the "Terminal Units" datasheet, "Outlet probes for terminal units" section

REFERENCE STANDARDS

ISO 10079-3: "Medical suction equipment – Suction equipment powered from a vacuum or pressure source"

HTM 02-01: "Medical gas pipeline systems"

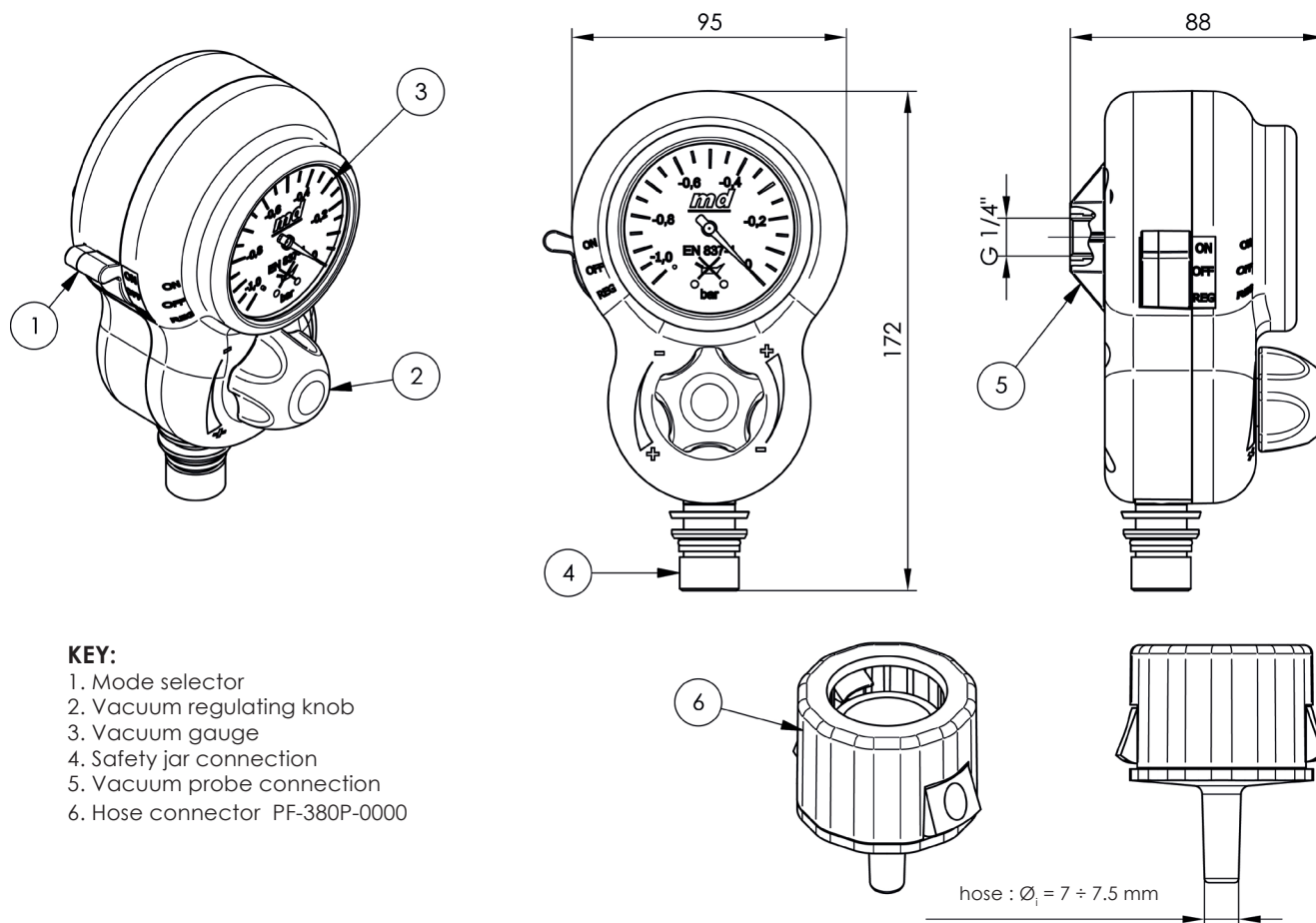
*Validity of the standards is referred to the current year





Vacuum regulators

DIMENSIONS



KEY:

- 1. Mode selector
- 2. Vacuum regulating knob
- 3. Vacuum gauge
- 4. Safety jar connection
- 5. Vacuum probe connection
- 6. Hose connector PF-380P-0000

- ▶ Gas: Vacuum
- ▶ Available adjustment scale:
 - 0 - 1000 mbar
 - 0 - 600 mbar
 - 0 - 250 mbar
- ▶ Vacuum gauge accuracy class: 1.6

- ▶ Working temperature: $+10\text{ °C} \div +40\text{ °C}$
- ▶ Storage temperature: $-20\text{ °C} \div +60\text{ °C}$
- ▶ Nominal working pressure:
 $P \leq -0.4$ bar (relative P)
- ▶ Probe fitting: G1/4" F

CODE	DESCRIPTION	PACKAGING		
		type	kg	pcs
PF-38G0-1000	0-1000 mbar Vacuum regulator	bag	0.35	1
PF-38G0-2000	0-250 mbar Vacuum regulator	bag	0.35	1
PF-38G0-3000	0-600 mbar Vacuum regulator	bag	0.35	1
PF-380P-0000	Hose connector for vacuum regulator	bag	0.03	1
PF-06UF-200V	UNI 9507 probe for vacuum regulator	bag	0.10	1
PF-06AF-200V	AFNOR NF S 90-116 probe for vacuum regulator	bag	0.10	1
PF-06DF-200V	DIN 13260-2 probe for vacuum regulator	bag	0.10	1
PF-06BF-200V	BS 5682 probe for vacuum regulator	bag	0.10	1





Collection jars

IDENTIFICATION

- ▶ Collection jar with snap fitting for coupling to the vacuum regulator PF-38G0-1000 ; PF-38G0-2000; PF-38G0-3000
- ▶ Made of autoclavable transparent polycarbonate
- ▶ Capacity indication by means of silk screened printed graduated scale
- ▶ Cap with outlet hose connector
- ▶ It can be connected to the vacuum regulator using just one hand
- ▶ Conceived to receive themicrobiological filter (cod. KT-2800-0000) which is in the cap to protect the operator
- ▶ Overflow device integrated in the cap
- ▶ Adapter for connection of the jar to G1/2" threaded systems

CE MARKING

Risk class I CE marking as prescribed by Italian legislative decree n. 46 of 24 February "Implementation of Directive 93/42/EEC concerning medical devices" and further modifications

REFERENCE STANDARDS

ISO 10079-3: "Medical suction equipment – Suction equipment powered from a vacuum or pressure source"

HTM 02-01: "Medical gas pipeline systems"

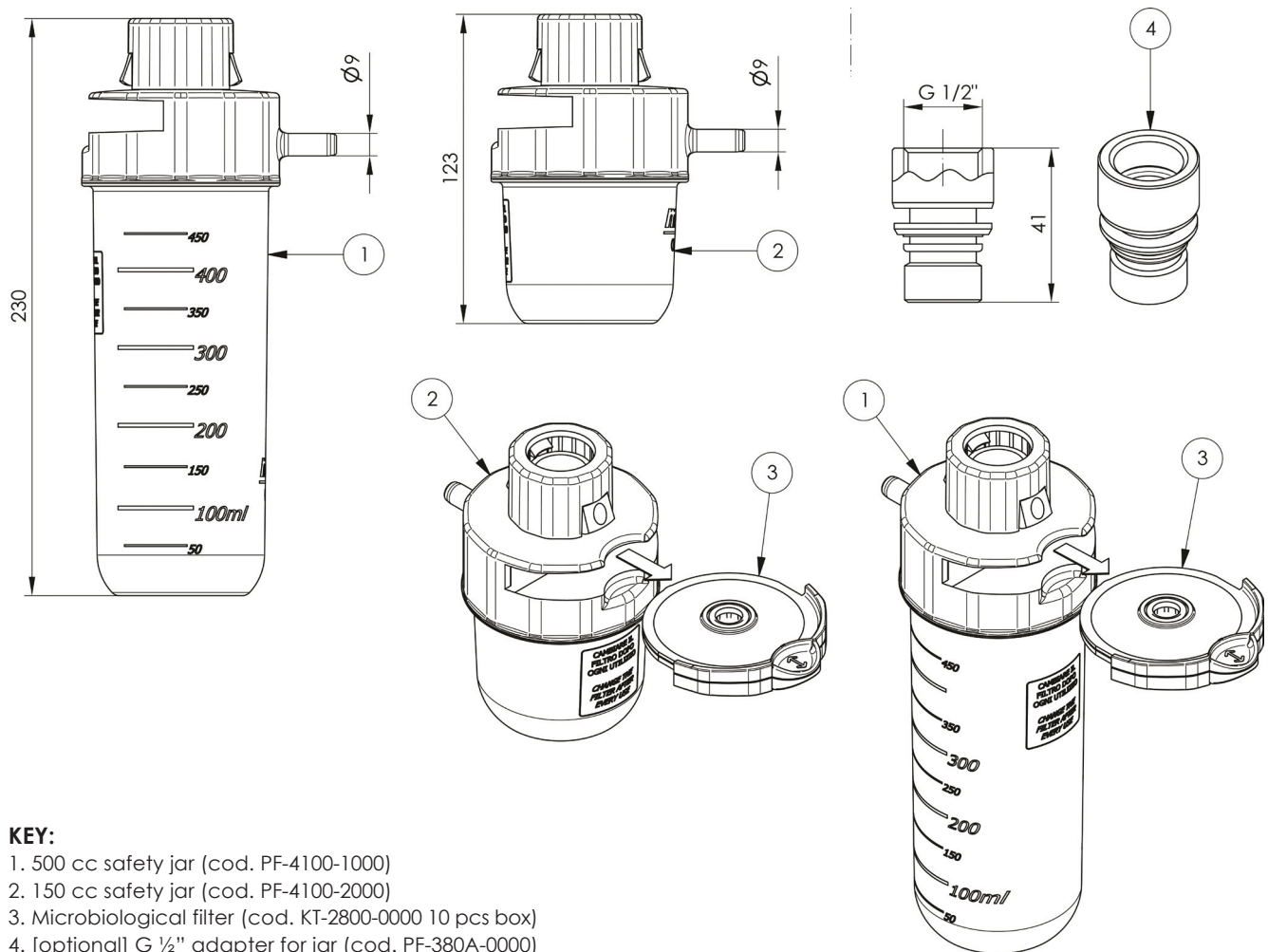
*Validity of the standards is referred to the current year





Collection jars

DIMENSIONS



KEY:

- 1. 500 cc safety jar (cod. PF-4100-1000)
- 2. 150 cc safety jar (cod. PF-4100-2000)
- 3. Microbiological filter (cod. KT-2800-0000 10 pcs box)
- 4. [optional] G 1/2" adapter for jar (cod. PF-380A-0000)

CODE	DESCRIPTION	PACKAGING		
		type	kg	pcs
PF-4100-1000	500 cc Safety jar	bag	0.19	1
PF-4100-2000	150 cc Safety jar	bag	0.14	1
PF-380A-0000	G1/2" Adapter for safety jar	bag	0.03	1
AQ-320V-0713	7 x 13 mm Silicone hose	30 m coil	3.20	-





Microbiological filters

IDENTIFICATION

- ▶ Microbiological filter for endocavitary suction
- ▶ Membrane made of a layer of glass fiber with antibacterial and antiviral treatment on reinforced polymer support
- ▶ Filter is inserted in a special transparent plastic shell that ensures its constant visibility
- ▶ Shell specifically shaped for insertion in MD collection jars capacity 500 cc (cod. PF-4100-1000) and 150 cc (cod. PF-4100-2000)
- ▶ Rapid, safe and simple filter replacement from the collection jar while protecting the vacuum regulator from bacterial contamination
- ▶ Unaffected by the effects of UV radiation



CE MARKING

Risk class I CE marking as prescribed by Italian legislative decree n. 46 of 24 February "Implementation of Directive 93/42/EEC concerning medical devices" and further modifications

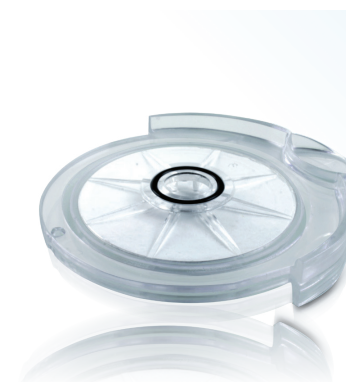


REFERENCE STANDARDS

ISO 10079-3: "Medical suction equipment – Suction equipment powered from a vacuum or pressure source"

HTM 02-01: "Medical gas pipeline systems"

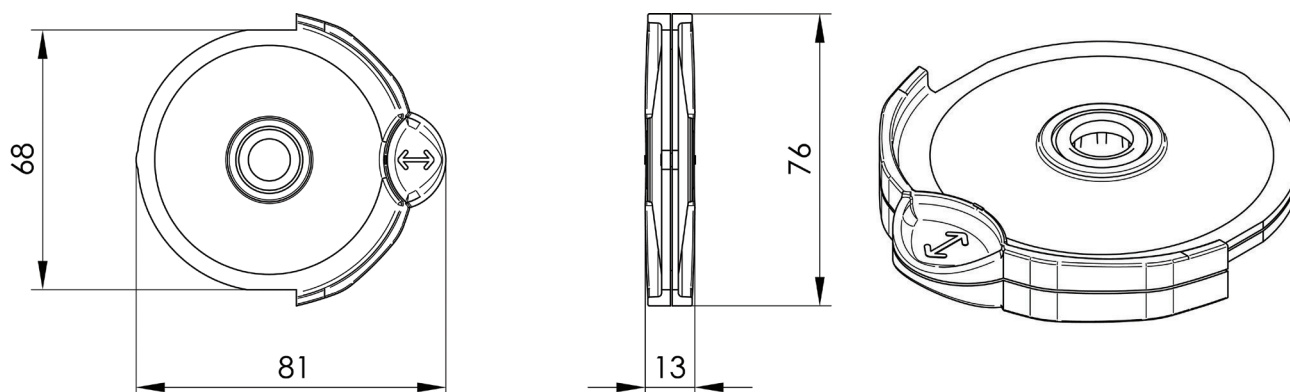
*Validity of the standards is referred to the current year





Microbiological filters

DIMENSIONS



- Filter replacement for each new patient or at best every 30 days for special applications
- Filter diameter: 50 mm
- Antibacterial and antiviral efficiency: 99.999 %
- Nominal working pressure: $\leq - 0.4$ bar
- Product life: 5 years
- Filters supplied in packs of ten

CODE	DESCRIPTION	PACKAGING			
		type	cm	kg	pcs
KT-2800-0000	Microbiological filter for suction jar (10 pieces)	box	13.5 x 7.5 x 7.5	0.29	10
KT-2800-1000	Microbiological filter without filtering part for suction jar (10 pieces)	box	13.5 x 7.5 x 7.5	0.29	10
MP-3800-0000	Microbiological filtering component $\varnothing = 50$ mm in fiberglass (100 pieces)	bag	10.0 x 10.0 x 5.0	0.10	100





Flowmeters for oxygen-therapy for rail mounting

IDENTIFICATION

- ▶ Flowmeters for oxygen and medical air supply
- ▶ Chrome-plated brass body
- ▶ Supplied in single or double version
- ▶ To be completed with male probe available in most diffused international standards
- ▶ Support for rail mounting or wall mounting on wall slide
- ▶ Filter positioned at the tube inlet for patient and flow meter protection
- ▶ Adjustment of gas flow by means of hand-knob
- ▶ Instant reading of the distributed flow rate by means of the graduated scale on the tube (expanded scale for 0 l/min to 5 l/m)
- ▶ Laser-engraved production lot and product code on the flow meter body
- ▶ Flexible hose standard ISO 5359 standard length L=1,5 m

CE MARKING

Flow meters:

Notified body 0426

CE marking in risk class II A in accordance with Legislative Decree 24 February 1997, no. 46 "Implementation of Directive 93/42/EEC, concerning Medical Devices" and further modifications

Probes:

Refer to the "Terminal Units" datasheet, "Outlet probes for terminal units" section

REFERENCE STANDARDS

ISO 15002: "Flow-metering devices for connection to terminal units of medical gas pipeline systems"

ISO 15001: "Anaesthetic and respiratory equipment. Compatibility with oxygen"

HTM 02-01: "Medical gas pipeline systems"

*Validity of the standards is referred to the current year



- ▶ Gases: Oxygen, Air, CO₂
- ▶ Measurement scale: 0 ÷ 15 l/min
- ▶ Measurement precision: ± 10%
- ▶ Maximum flow rate: 20 l/min
- ▶ Pressure source limits:
P_{min} = 400 kPa; P_{max} = 500 kPa
- ▶ Working temperature: +10 °C ÷ +40 °C
- ▶ Storage temperature: -20 °C ÷ +60 °C

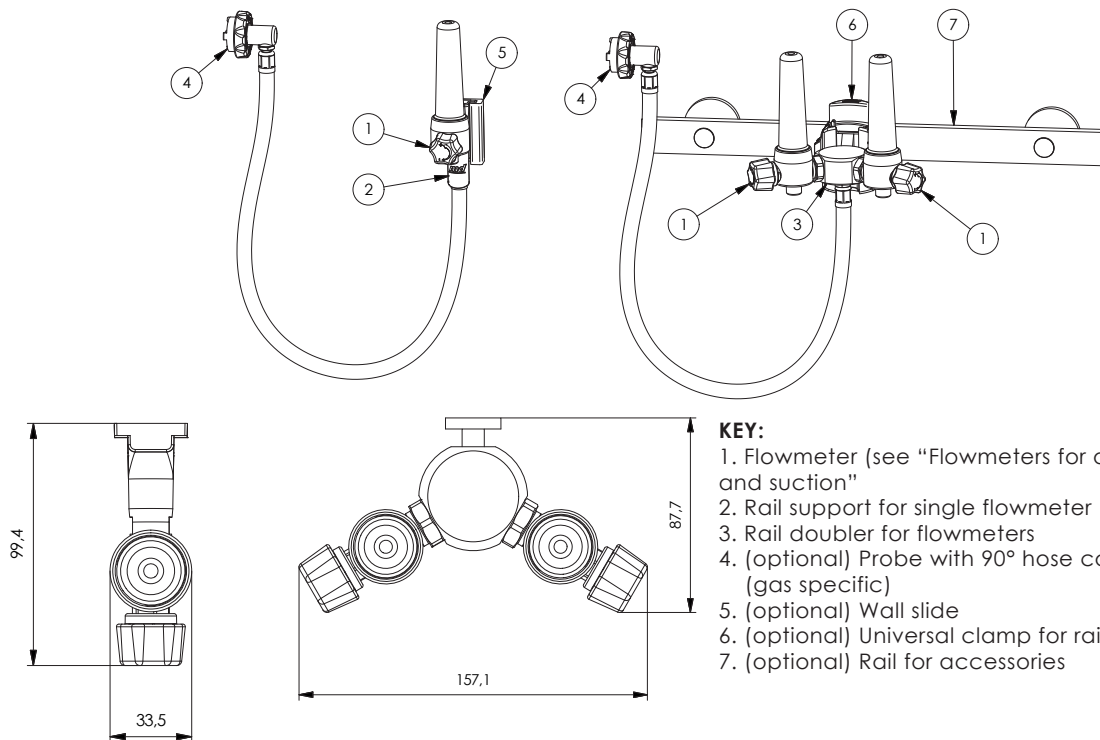
- ▶ Humidifier connection fitting: 1/4" autoclavable humidifier; 9/16" disposable humidifier
- ▶ Resolution: 0.5 l/min between 0 and 6 l/min
- ▶ Resolution: 1 l/min between 6 l/min and 15 l/min
- ▶ Sintered inlet filter with 24 µm mesh
- ▶ Single flowmeter code **PF-2670-yyyy**
Packaging, dimensions: box, 18.5 x 16.5 x 5.5 cm
- ▶ Double flowmeter code **PF-2650-yyyy**
Packaging, dimensions: box, 21 x 19 x 17.5 cm





Flowmeters for oxygen-therapy for rail mounting

DIMENSIONS

**KEY:**

1. Flowmeter (see "Flowmeters for oxygen-therapy and suction")
2. Rail support for single flowmeter
3. Rail doubler for flowmeters
4. (optional) Probe with 90° hose connector (gas specific)
5. (optional) Wall slide
6. (optional) Universal clamp for rail
7. (optional) Rail for accessories

FLOWMETER

TYPE	GAS	CODE	OUTLET	PACKAGING		
				type	kg	pcs
Single flowmeter for rail	Oxygen	PF-2670-14O2	G 1/4"	box	0.21	1
		PF-2670-96O2	9/16"	box		
	Medical Air	PF-2670-14AC	G 1/4"	box	0.21	1
		PF-2670-96AC	9/16"	box		
Double flowmeter for rail	Oxygen	PF-2670-14CO	G 1/4"	box	0.21	1
		PF-2670-96CO	9/16"	box		
	Medical Air	PF-2650-14O2	G 1/4"	box	0.51	1
		PF-2670-96O2	9/16"	box		
	Medical Air	PF-2650-14AC	G 1/4"	box	0.51	1
		PF-2650-96AC	9/16"	box		
	Carbon Dioxide	PF-2650-14CO	G 1/4"	box	0.51	1
		PF-2650-96CO	9/16"	box		

PROBE WITH HOSE CONNECTOR 90° (OPTIONAL)

GAS	CODES / REFERENCE STANDARD			
	AFNOR NF S 90-116	UNI 9507	DIN 13260-2	BS 5682
Oxygen	PF-06AP-00O2	PF-06UP-00O2	PF-06DP-00O2	PF-06BP-00O2
Medical Air	PF-06AP-00AC	PF-06UP-00AC	PF-06DP-00AC	PF-06BP-00AC
Carbon Dioxide	PF-06AP-0CO2	PF-06UP-0CO2	PF-06DP-0CO2	-

FASTENING SYSTEM FOR ACCESSORIES (OPTIONAL)

CODE	DESCRIPTION	PACKAGING	
		type	kg
PF-2900-6000	Universal rail clamp 25-35 mm	bag	0.09
PF-2900-5000	Wall slide	bag	0.09





Vacuum regulator for rail mounting



IDENTIFICATION

- ▶ Vacuum regulators for adjusting the vacuum level for endocavitary suction
- ▶ Depression level controlled by means of the front knob
- ▶ A lateral lever allows the functioning of following modes: 1 ON fully open (maximum suction), 2 OFF no suction, 3 REG flow rate tuned
- ▶ Available in scale 0-250 l/min, 0-600 l/min, 0-1000 l/min
- ▶ Direct connection to the terminal unit or on medical rail
- ▶ Support for rail mounting or wall slide mounting
- ▶ Quick connection safety jar with hose connector on cap for connection to tubings
- ▶ Available in single or double version
- ▶ Laser engraved marking of production lot product code and production date (month and year)
- ▶ Flexible hose standard ISO 5359 of standard length L= 1,5m



CE MARKING

Vacuum regulator and Hose holder:

Notified body 0426

CE marking in risk class II A in accordance with Legislative Decree 24 February 1997, no. 46 "Implementation of Directive 93/42/EEC, concerning Medical Devices" and further modifications

Probes:

Refer to the "Terminal Units" datasheet, "Outlet probes for terminal units" section

REFERENCE STANDARDS

ISO 10079-3: "Medical suction equipment – Suction equipment powered from a vacuum or pressure source"
HTM 02-01: "Medical gas pipeline systems"

*Validity of the standards is referred to the current year



- ▶ Gas: Vacuum
- ▶ Available adjustment scale:
 - 0 - 1000 mbar
 - 0 - 600 mbar
 - 0 - 250 mbar
- ▶ Vacuum gauge accuracy class: 1.6

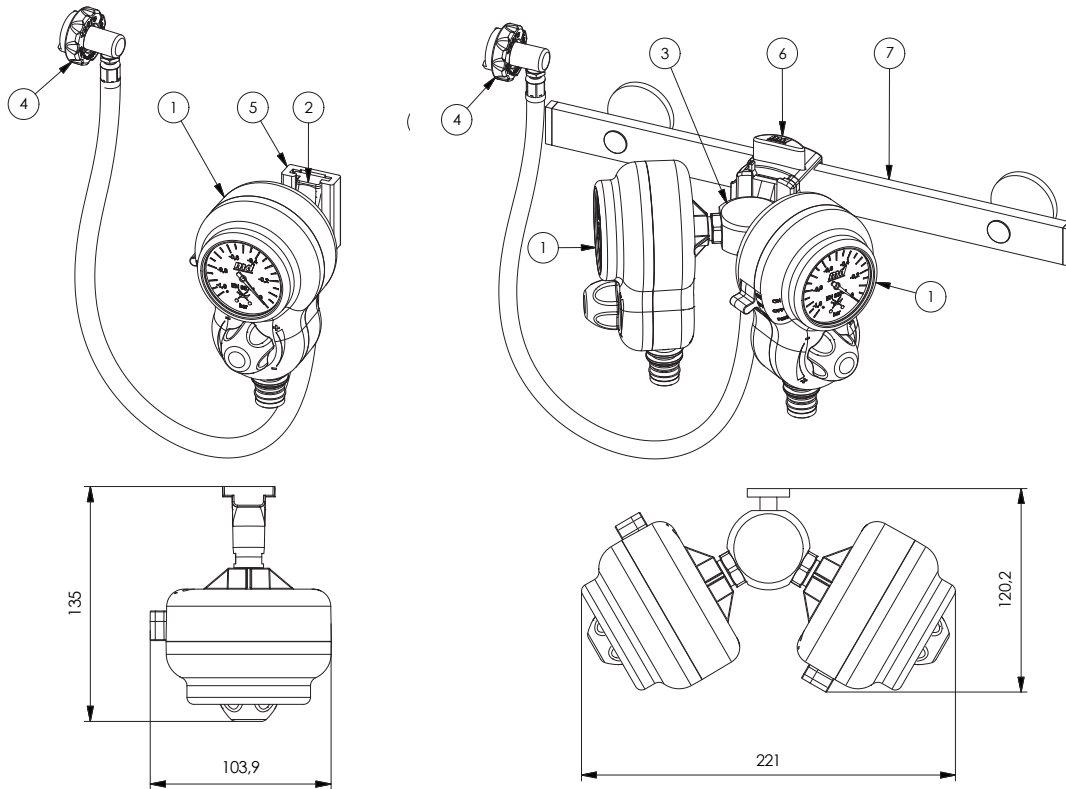
- ▶ Temperatura di utilizzo: +10 °C ÷ +40 °C
- ▶ Temperatura di stoccaggio: -20 °C ÷ +60 °C
- ▶ Pressione nominale di esercizio:
 $P \leq -0.4$ bar (P relativa)





Vacuum regulator for rail mounting

DIMENSIONS



KEY

1. Vacuum regulator (see technical sheet "Vacuum regulators")
2. Rail support for vacuum regulator
3. Rail doubler for vacuum regulator
4. (optional) Probe with 90° hose connector for vacuum regulator (also available with straight connector)
5. (optional) Wall slide
6. (optional) Universal clamp for rail
7. (optional) Rail for accessories

VACUUM REGULATORS FOR RAIL MOUNTING

TYPE	CODE	DESCRIPTION	PACKAGING		
			type	kg	pcs
Double vacuum regulator for rail mounting	PF-38G0-1100	Double vacuum regulator for rail mounting, 0-1000 mbar	bag	0.35	1
	PF-38B0-3100	Double vacuum regulator for rail mounting, 0-600 mbar	bag	0.35	1
	PF-38B0-2100	Double vacuum regulator for rail mounting, 0-250 mbar	bag	0.35	1
Single vacuum regulator for rail mounting	PF-38GB-1200	Single vacuum regulator for rail mounting, 0-1000 mbar	bag	0.10	1
	PF-38BB-3200	Single vacuum regulator for rail mounting, 0-600 mbar	bag	0.10	1
	PF-38BB-2200	Single vacuum regulator for rail mounting, 0-250 mbar	bag	0.10	1

PROBE FOR VACUUM REGULATORS WITH 90° HOSE CONNECTOR

CODES/REFERENCE STANDARD			
AFNOR NF S 90-116	UNI 9507	DIN 13260-2	BS 5682
PF-06AP-000V	PF-06UP-000V	PF-06DP-000V	PF-06BP-000V

RAIL FIXATION SYSTEM FOR ACCESSORIES (OPTIONAL)

CODE	DESCRIPTION	PACKAGING	
		type	kg
PF-2900-6000	Universal rail clamp 25-35 mm	bag	0.09
PF-2900-5000	Wall slide	bag	0.09





Fastening systems for accessories

ACCESSORIES MOUNTING RAIL

- ▶ Accessories mounting rail in satin finish AISI 304 stainless steel 25 x 10 mm
- ▶ Rail lengths produced to client specifications
- ▶ Finishing with plastic caps at the rail ends
- ▶ Anodized aluminium brackets for fixing the rail to the wall
- ▶ Maximum recommended distance between brackets for wall mounting 80 cm



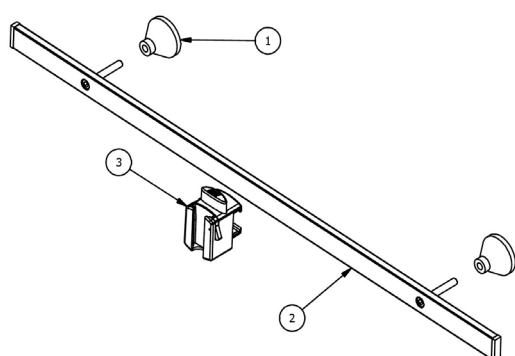
REFERENCE STANDARDS

ISO 19054: "Rail systems for supporting medical equipment"

*Validity of the standards is referred to the current year

CE MARKING

Risk class I CE marking as prescribed by Italian legislative decree n. 46 of 24 February "Implementation of Directive 93/42/EEC concerning medical devices" and further modifications



KEY:

- 1. Fastening wall rail support
- 2. Stainless steel rail
- 3. Universal rail clamp

FASTENING SYSTEMS FOR ACCESSORIES

CODICE	DESCRIZIONE	IMBALLO	
		type	kg
PF-2900-2001	25 x 10 Stainless steel rail	bag	0.84/m
PF-2900-4000	Wall rail support	bag	0.10
APPLICATIONS FOR PLASTERBOARD WALLS			
AQ-1400-0000	Fixation dowel for plasterboard walls	bag	0.10
MP-14UF-0890	Stainless steel screw TCEI M8x90	bag	0.10
APPLICATIONS FOR CONCRETE WALLS			
AQ-1400-0001	Fixation dowel for concrete walls	bag	0.10
MP-14UF-0850	Stainless steel screw TCEI M 8x50	bag	0.10





Fastening systems for accessories

UNIVERSAL CLAMP FOR ACCESSORIES HOLDER RAIL

- ▶ Made of technopolymer material
- ▶ Suitable for attachment to rail sizes 25 ÷ 35 x 10 mm
- ▶ Facility for mounting 30 x 5 mm or 25 x 5 mm accessory bracket by means of pull-out support
- ▶ Lateral fastening system for flexible hose



WALL SUPPORT SLIDE

- ▶ Made of anodized aluminium
- ▶ Wall fixing by means of TSPEI M5 hex socket screws



REFERENCE STANDARDS

ISO 5359: "Low-pressure hose assemblies for use with medical gases"

ISO 19054: "Rail systems for supporting medical equipment"

HTM 02-01: "Medical gas pipeline systems"

*Validity of the standards is referred to the current year

FASTENING SYSTEM FOR ACCESSORIES

CODE	DESCRIPTION	PACKAGING	
		type	kg
PF-2900-6000	Universal clamp 25-35 mm	bag	0.09
PF-2900-5000	Wall bracket	bag	0.09

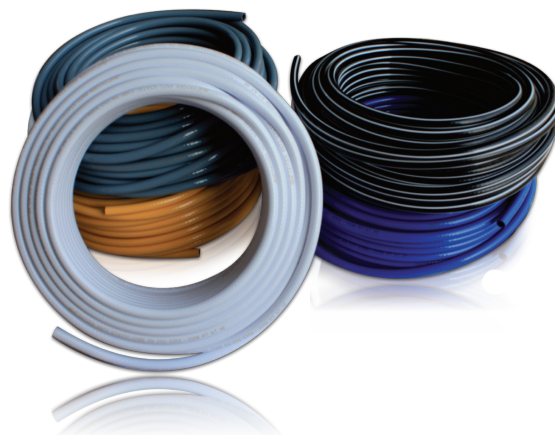




Low pressure hoses

FLEXIBLE HOSES FOR USE WITH MEDICAL GASES

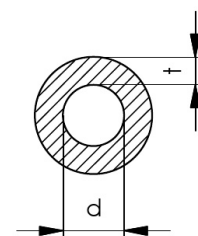
- ▶ Manufactured by coextrusion of reinforced thermoplastic polymers
- ▶ Cadmium-free and latex-free materials
- ▶ Gas-specific color coding
- ▶ Marking with manufacturer's name, gas' name and serial ID of the production in compliance with ISO 5359
- ▶ Hose: antistatic, oil-free and physiologically inert
- ▶ Gloss surface finish



REFERENCE STANDARDS

ISO 5359: "Low-pressure hose assemblies for use with medical gases"

*Validity of the standards is referred to the current year



- ▶ Gases: Vacuum, Oxygen, Medical Air, Carbon Dioxide, Nitrous Oxide
- ▶ Material: PVC containing DEHP with textile insert
- ▶ Product lifetime: 5 years from production date marked on product
- ▶ Burst pressure: 56 bar at 23 °C

- ▶ Working temperature: -10 °C ÷ +40 °C
- ▶ Maximum working pressure: 1400 kPa
- ▶ Maximum electrical impedance $5 \times 10^4 \Omega \cdot m$
- ▶ Sterilizable in ethylene oxide (EtO)

HOSES FOR USE WITH MEDICAL GASES

CODE	GAS	COLOR	d mm	t mm	COIL LENGTH	PACKAGING	
						type	kg
AQ-3200-00O2	Oxygen	White	$6,7 \pm 0,15$	$3 \pm 0,2$	50	bag	5.74
AQ-3200-00AC	Medical Air	Black - White	$6,7 \pm 0,15$	$3 \pm 0,2$	50	bag	5.74
AQ-3200-0N2O	Nitrous Oxide	Blue	$6,7 \pm 0,15$	$3 \pm 0,2$	50	bag	5.74
AQ-3200-0CO2	Carbon Dioxide	Grey	$6,7 \pm 0,15$	$3 \pm 0,2$	50	bag	5.74
AQ-3200-000V	Vacuum	Yellow	$6,7 \pm 0,15$	$3 \pm 0,2$	50	bag	5.74
AQ-3200-100V	Vacuum	Yellow	$8,0 \pm 0,2$	$3 \pm 0,3$	50	bag	6.51





Low pressure hoses

SILICONE FLEXIBLE HOSES FOR SUCTION

- ▶ Transparent 100% silicone hoses for external medical use.
Non-stick: prevents incrustation and coagulation
- ▶ Sterilizable in autoclave at 135°C – 2.2/2.5 bar; in air at 200°C;
with gamma radiation
- ▶ 51% elasticity
- ▶ Dimensions Øi = 7 mm thickness 3 mm

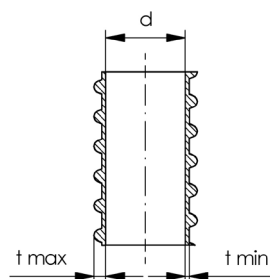
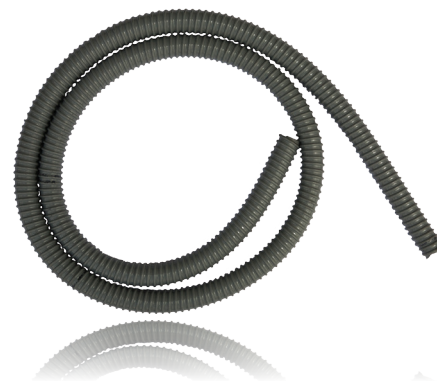


SILICONE HOSES FOR SUCTION

CODE	DESCRIPTION	PACKAGING	
		type	kg
AQ-320V-0713	7 x 13 Silicone hose for suction	30 m coil	3.20

HOSES FOR ANAESTHETIC GAS SCAVENGING

- ▶ Plasticized PVC hose with rigid impact resistant PVC spiral reinforcement
- ▶ Color grey
- ▶ Working temperature: –10 °C ÷ +50 °C
- ▶ Smooth inner surface / Corrugated outer surface



HOSES FOR ANAESTHETIC GAS SCAVENGING

CODE	d mm	t min mm	t max mm	CURVE mm	COIL LENGTH	PACKAGING	
						type	kg
AQ-3200-00EV	16	0,8	2,4	22	30	bag	3,48
AQ-3200-10EV	22	0,8	2,4	28	30	bag	4,35





Flow selectors for oxygen therapy

IDENTIFICATION

- ▶ Flow selector for oxygen therapy to be used coupled with a flow meter for oxygen therapy
- ▶ Possibility to orientate the flow of medical gas being erogated towards a humidifier or a hose connector
- ▶ Female threaded inlet G1/4" or 9/16"
- ▶ Male threaded outlet G1/4" or 9/16"
- ▶ Anodised aluminium body allowing flow adjustment via axial scrolling
- ▶ In-out shaft and hose connector in chromed brass
- ▶ All the combinations of G 1/4" and 9/16" are available



CE MARKING

Risk class I CE marking as prescribed by Italian legislative decree n. 46 of 24 February "Implementation of Directive 93/42/EEC concerning medical devices" and further modifications

REFERENCE STANDARDS

UNI EN ISO 15002: "Flow-metering devices for connection to terminal units of medical gas pipeline systems"

UNI EN ISO 15001: "Anaesthetic and respiratory equipment - Compatibility with oxygen"

*Validity of the norms refers to the current year

- ▶ Gases: Oxygen, Air
- ▶ Maximum gauge 20 l/min
- ▶ Use temperature: +10 °C ÷ +40 °C
- ▶ Storage temperature: -20 °C ÷ +60 °C

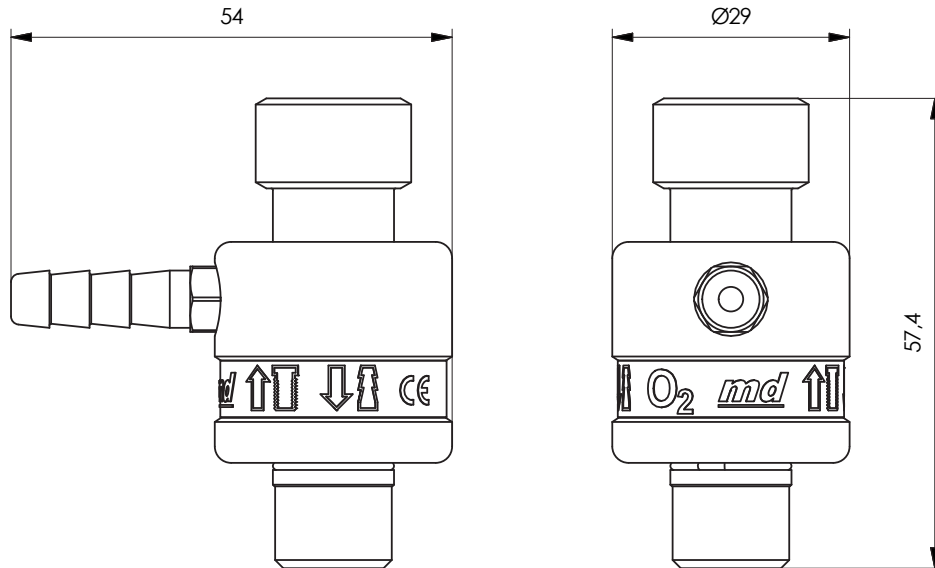
- ▶ Flow meter connection: G1/4" F or 9/16" F
- ▶ Humidifier connection: G1/4" M (autoclavable humidifier); 9/16" M (single use humidifier)
- ▶ Hose connector for pipe Øi = 7 mm





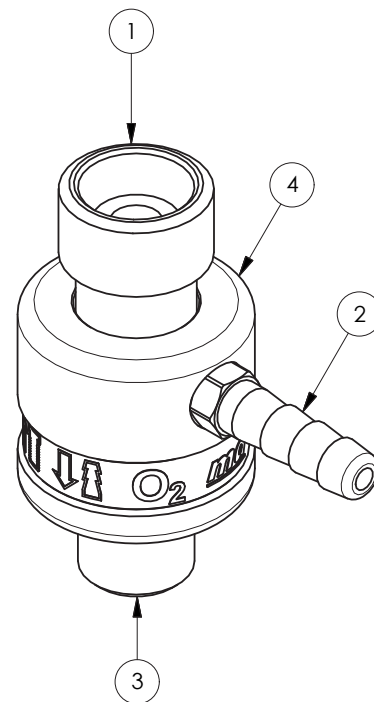
Flow selectors for oxygen therapy

DIMENSIONS



LEGENDA:

1. Inlet connection (from humidifier)
2. Outlet hose connector
3. Threaded outlet connection (to humidifier)
4. Flow selector body



FLOW SELECTORS FOR OXYGEN THERAPY

GASES	IN / OUT THREADING			
	G 1/4" - G 1/4"	9/16" - 9/16"	G 1/4" - 9/16"	9/16" - G 1/4"
Oxygen	PF-5700-00O2	PF-5700-10O2	PF-5700-20O2	PF-5700-30O2
Medical Air	PF-5700-00AC	PF-5700-10AC	PF-5700-20AC	PF-5700-30AC

