

**ATTESTATION OF COMPLIANCE
UYGUNLUK ONAYI**

The technical file and test reports of the following product have been checked and found in compliance with the Parliament and Council Directive 2014/35/EU of 26 February 2014 on the harmonization of the laws of Member States relating to electrical equipment designed for use within certain voltage limits and Parliament and Council Directive 2006/42/EC of 17 May 2006 on the approximation of the laws of the Member States relating to machinery.

Teknik dosya ve test raporları incelenerek, belirtilen ürünün Avrupa Birliği Teknik Komisyonu tarafından 26 Şubat 2014 tarihinde yayınlanan 2014/35/EU Belirli Gerilim Sınırları Dahilinde Çalışmak Üzere Teçhizat ile ilgili yönetmeliği ve 17 Mayıs 2006 tarihinde yayınlanan 2006/42/AT Makina Emniyeti Yönetmeliğine uygunluğu saptanmıştır.

Number: **2195-AG005-19-34**
Numara:

Applicant:
Başvuru Sahibi:

ERSÖZ&GONCA MUTFAK MAKİNE VE EKİPMANLARI SAN. TİC. A.Ş.
Konya Organize Sanayi Bölgesi Büyük Kayacak Mah. 9. Sokak No:20
Selçuklu / KONYA

Manufacturer:
Üretici:

ERSÖZ&GONCA MUTFAK MAKİNE VE EKİPMANLARI SAN. TİC. A.Ş.
Konya Organize Sanayi Bölgesi Büyük Kayacak Mah. 9. Sokak No:20
Selçuklu / KONYA

Products:
Ürün:

ELECTRIC RANGES
ELEKTRİKLİ OCAKLAR

Trademark:
Ticari Marka:

EMPERO

Type/Models:
Tip/Model:

See Page 2.

Base of attestation:
Onay Dayanağı:

File of technical documentation, test report no AG005-TR-34
Teknik Dökümantasyon, AG005-TR-34 numaralı Test Raporu

The referred technical file(s) is reviewed and attested with presumption of compliance with the essential requirements listed EU Directive above. This attestation does not abrogate the compulsory obligation of the manufacturer to issue the declaration of conformity.

Diğer ilgili direktiflere uyulmalıdır. Bu onay üreticinin uygunluk beyanı düzenleme zorunluluğunu ortadan kaldırmaz. Referans teknik dosya ile ürünün yukarıda belirtilen AT Direktifinin temel gereklerine uygunluğu kabul edilir.

İstanbul, Date / Belge Tarihi 26-11-2019
Expiry Date / Geçerlilik Tarihi 25-11-2024



CIHAN DEVA

PRODUCT MODELS / ÜRÜN MODELLERİ

EMP.6KE010
EMP.6KE020
EMP.7KE010
EMP.7KE020
EMP.7KE030
EMP.7KE040
EMP.7KE021
EMP.7KE031
EMP.7KE041
EMP.9KE010
EMP.9KE020
EMP.9KE030
EMP.9KE040
EMP.9KE021
EMP.9KE031
EMP.9KE031-K
EMP.9KE041
EMP.7KE010-K
EMP.7KE020-K
EMP.7KE030-K
EMP.7FRE01
EMP.7FRE02
EMP.7FRE03
EMP.PLS.7KE010
EMP.PLS.7KE020
EMP.PLS.7KE030
EMP.PLS.7FRE01
EMP.PLS.7FRE02
EMP.PLS.7FRE03
EMP.9FRE01
EMP.9FRE02
EMP.9FRE03
EMP.PLS.9KE010
EMP.PLS.9KE020
EMP.PLS.9KE030
EMP.PLS.9FRE01
EMP.PLS.9FRE02
EMP.PLS.9FRE03



**ATTESTATION OF COMPLIANCE
UYGUNLUK ONAYI**

The technical file and test reports of the following product have been checked and found in compliance with the Parliament and Council Directive 2014/35/EU of 26 February 2014 on the harmonization of the laws of Member States relating to electrical equipment designed for use within certain voltage limits and Parliament and Council Directive 2006/42/EC of 17 May 2006 on the approximation of the laws of the Member States relating to machinery.

Teknik dosya ve test raporları incelenerek, belirtilen ürünün Avrupa Birliği Teknik Komisyonu tarafından 26 Şubat 2014 tarihinde yayınlanan 2014/35/EU Belirli Gerilim Sınırları Dahilinde Çalışmak Üzere Teçhizat ile ilgili yönetmeliği ve 17 Mayıs 2006 tarihinde yayınlanan 2006/42/AT Makina Emniyeti Yönetmeliğine uygunluğu saptanmıştır.

Number: **2195-AG005-19-36**
Numara:

Applicant:
Başvuru Sahibi:

ERSÖZ&GONCA MUTFAK MAKİNE VE EKİPMANLARI SAN. TİC. A.Ş.
Konya Organize Sanayi Bölgesi Büyük Kayacak Mah. 9. Sokak No:20
Selçuklu / KONYA

Manufacturer:
Üretici:

ERSÖZ&GONCA MUTFAK MAKİNE VE EKİPMANLARI SAN. TİC. A.Ş.
Konya Organize Sanayi Bölgesi Büyük Kayacak Mah. 9. Sokak No:20
Selçuklu / KONYA

Products:
Ürün:

UPRIGHT REFRIGARATOR AND FREEZER
DİK TİP SOĞUTUCULAR VE DERİN DONDURUCULAR

Trademark:
Ticari Marka:

EMPERO

Type/Models:
Tip/Model:

EMP.70.80.01, EMP.140.80.01, EMP.70.80.01-STA, EMP.140.80.01-STA,
EMP.70.80.03, EMP.140.80.03, EMP.70.80.02-STA, EMP.140.80.02-STA,
EMP.70.95.01, EMP.70.95.01-STA, EMP.70.95.02-STA, EMP.70.80.02,
EMP.140.80.02

Base of attestation:
Onay Dayanağı:

File of technical documentation, test report no AG005-TR-36
Teknik Dökümantasyon, AG005-TR-36 numaralı Test Raporu

The referred technical file(s) is reviewed and attested with presumption of compliance with the essential requirements listed EU Directive above. This attestation does not abrogate the compulsory obligation of the manufacturer to issue the declaration of conformity.

Diğer ilgili direktiflere uyulmalıdır. Bu onay üreticinin uygunluk beyanı düzenleme zorunluluğunu ortadan kaldırmaz. Referans teknik dosya ile ürünün yukarıda belirtilen AT Direktifinin temel gereklerine uygunluğu kabul edilir.

Istanbul, Date / Belge Tarihi 26-11-2019
Expiry Date / Geçerlilik Tarihi 25-11-2024



CİHAN DEVA*

EU DECLARATION OF CONFORMITY

We: UGUR Sogutma Makinaları Sanayi ve Ticaret A.S.

Yeni Sanayi Mahallesi Devlet Karayolu Caddesi no:127/C – 09900 Nazilli – Aydın - TURKEY

Declare under our own responsibility that the product:

UDD 500 BK

To which the declaration refers is in compliance with the following:

MACHINERY SAFETY-DIRECTIVES 2006/42/CE (Machine) and IC 087, 2014/35/UE (Low Voltage)	
EN 60335-1:2012/A1:2019	Safety of household and similar electrical appliances – Part 1 – General requirements
EN 60335-2-89:2010+A1:2016+A2:2017	Safety of household and similar electrical appliances – Part 2-89 – Specific requirements for Commercial refrigerator and freezers
EN 62233:2008	Measurements method for Electromagnetic Field (EMF) of Household Appliances and similar apparatus with regard to Human exposure
EN 62471:2009	Photo biological safety of lamps and lamp system

ELECTROMAGNETIC COMPABILITY (EMC)-DIRECTIVE 2014/30/UE (harmonisation of the laws relating to EMC)	
EN 55014-1:2017	Electromagnetic compatibility - Requirements for household appliances, electric tools and similar apparatus. Part 1: Emission
EN 55014-2:2015	Electromagnetic compatibility - Requirements for household appliances, electric tools and similar apparatus. Part 2: Immunity
EN IEC 61000-3-2:2019	Electromagnetic Compatibility (EMC) - Part 3-2: Limits for harmonic current emissions (equipment input current $\leq 16A$ per phase
EN 61000-3-3:2013	Electromagnetic Compatibility (EMC) - Part 3: Limits. Section 3: Limitation of voltage fluctuations and flicker in low-voltage supply systems for equipment with rated current $\leq 16A$

PRESSURE EQUIPMENT DIRECTIVE (PED) 2014/68/UE	
As the equipment falls into a class lower than I, this directive does not apply to the product (art.1 par.3.6)	

ECODESIGN- ErP DIRECTIVE 2009/125/CE	
Reg. (EU) 2017/1369	Energy Consumption Labelling Indications by Energy-related products
Reg. (EU) 2019/2018	Supplementing Regulation (EU) 2017/1369 of the European Parliament and of the Council with regard to energy labelling of refrigerating appliances with a direct sales function
Reg. (EU) 2019/2024	Laying down ecodesign requirements for refrigerating appliances with a direct sales function pursuant to Directive 2009/125/EC of the European Parliament and of the Council

FOODSTAFF COMPATIBILITY	
Regulation (CE) Nr. 10/2011	Plastics intended to come into contact with food
Regulation (CE) Nr. 1935/2004	Materials and articles intended to come into contact with food
Regulation (CE) Nr. 2023/2006 (amending reg. 1935/2004)	Good manufacturing practise for materials and articles intended to come into contact with food
Regulation (CE) Nr. 282/2008 (amending reg. 2023/2006)	Recycled plastic Materials and articles intended to come into contact with food

ROHS AND WEEE	
EN 50581:2012	Technical documentation for the assessment of electrical and electronic products with respect to the restriction of hazardous substances
Directive 2011/65	EC of the European Parliament and of the Council of 8th June 2011
Directive 2002/96	EC of the European Parliament and of the Council of 27th January 2003

REACH (Registration, Evaluation, Authorisation and restriction of Chemicals)	
Regulation (CE) Nr. 1907/2006	Registration, Evaluation, Authorisation and restriction of Chemicals (REACH), establishing a European Chemicals Agency, amending dir. 1999/45 and replacing the following: Reg. CEE nr. 793/93 - Reg. CEE nr. 1488/94 – dir. 76/769/CEE – dir. 91/155/CEE – dir. 93/67/CEE – dir. 93/105/CE – dir. 2000/21/CE.

SUBSTANCES THAT DEplete THE OZONE LAYER	
Regulation (CE) Nr. 1005/2009	Rules on the production, import, export, placing on the market, use recovery, recycling, reclamation and destruction of substances that deplete the ozone layer and of equipment containing those substances.

The person authorized to draw-up the Technical Documentation is:

Bora DEVRİM (R&D DIRECTOR)

Nazilli: 20.01.2023





YU-TING INDUSTRIAL CO., LTD.
 NO. 165, SHANYING RD., GUSHAN TOWNSHIP,
 TAoyUAN COUNTY 33341, TAIWAN
 TEL: +886 3 3500011 FAX: +886 3 3500077

INSPECTION CERTIFICATE

INVOICE NO: A110126

(CONTRACT NO: 04/19/19 DD 10.10.2019)

DATE: Aug. 10, 2022

DESCRIPTION OF GOODS AND/OR SERVICES:

PRIME GRADE STAINLESS STEEL SHEET AISI 304

Coil Number	Heat No.	C/N.O.	Grade / Finish	SIZE	QTY	Quantity
C6690	211126D132	FQ01	304 NO.4/PVC	2.0MM X 1250MM X 2500MM		1,978 KGS
A9308	210627F254	FQ02	304 NO.4/PVC	0.8MM X 1250MM X 2500MM		2,184 KGS
C6567	B4042-3000	FQ03	304 NO.4/PVC	1.0MM X 1250MM X 2500MM		1,687 KGS
C6936	A5914-1020	FQ04	304 NO.4/PVC	1.0MM X 1000MM X 2000MM		1,980 KGS
C9088	B4373-1030	FQ05	304 BA/PVC	0.5MM X 1000MM X 2000MM		1,927 KGS
C9088	B4373-1030	FQ06-FQ09	304 BA/PI	0.5MM X 1000MM X 2000MM		6,804 KGS
C8449-A	220419D481	FQ10	304 BA/PI	0.5MM X 1250MM X 2500MM		1,360 KGS
C8449-A	220419D481	FQ11	304 BA/PVC	0.5MM X 1250MM X 2500MM		1,445 KGS
A8170	A5422-3010	FQ12	304 2B/PI	0.5MM X 1250MM X 2500MM		1,069 KGS
A8170	A5422-3010	FQ13	304 2B/PVC	0.5MM X 1250MM X 2500MM		1,135 KGS

Chemical composition

Coil Number	C %	Si %	Mn %	P %	S %	Cr %	Ni %	N %	T.S N/mm ²	Y.S(0.2%) N/mm ²	Elong %		Hardness	
											%	%	HRB	HV
C6690	0.046	0.41	1.04	0.029	0.002	18.10	8.05	0.052	666	279	53.8	82.9	-	-
A9308	0.044	0.42	1.07	0.035	0.004	18.18	8.05	0.054	667	275	54.9	80.7	-	-
C6567	0.025	0.41	0.89	0.036	0.002	18.23	8.04	0.070	632	292	54.4	82.2	-	-
C6936	0.059	0.53	0.85	0.035	0.001	18.21	8.07	0.059	683	331	50.5	86.5	-	-
C9088	0.053	0.53	0.88	0.035	0.003	18.07	8.06	0.056	663	301	58.2	77.4	-	-
C8449-A	0.045	0.49	1.02	0.034	0.005	18.10	8.04	0.050	700	288	61.9	76.7	-	-
A8170	0.046	0.49	0.86	0.034	0.002	18.20	8.02	0.063	692	339	54.6	83.5	-	-

The laboratory responsible for the chemical & mechanical testing of this certificate has been recognized by Taiwan

Accreditation Foundation(TAF) as an accredited laboratory. (Registration number: 0366 - 0365)

We certify that the above mentioned products comply with the terms of the order contract and goods found to be conformity with ASTM A240/240M STANDARD

Inspector's stamp



YU-TING Industrial Co., Ltd.

[Signature]

This test certificate is made by controlled QC-system and is valid without signature.



**ДЕРЖАВНА СЛУЖБА УКРАЇНИ З ПИТАНЬ
БЕЗПЕЧНОСТІ ХАРЧОВИХ ПРОДУКТІВ ТА ЗАХИСТУ СПОЖИВАЧІВ**
вул. Б. Грінченка, 1, м. Київ, 01001, тел. 279-12-70, 279-75-58, факс 279-48-83,
e-mail: info@dpss.gov.ua

ЗАТВЕРДЖУЮ

Т. в. о. Голови Держпродспоживслужби

Шевченко О.П.

(прізвище, ім'я, по батькові)

(підпис)

М.П.

**ВИСНОВОК
державної санітарно-епідеміологічної експертизи**

від 05.07. 2023 р.

№ 12.2-18-1/ 8517

Об'єкт експертизи: Обладнання кухонне виготовлене згідно з додатком до Висновку

виготовлені у відповідності із ТУ У 27.5-43764128-002:2021 «ОБЛАДНАННЯ КУХОННЕ МЕТАЛЕВЕ ПРОФЕСІЙНЕ ДЛЯ ПІДПРИЄМСТВ ГРОМАДСЬКАОГО ХАРЧУВАННЯ. ТЕХНІЧНІ УМОВИ»

Код за ДКПЦ, УКТЗЕД, артикул: 28.93

Сфера застосування та реалізації об'єкта експертизи: за призначенням, підприємства ресторанного типу, побут. Оптова та роздрібна торгівля

Країна-виробник: ТОВ «КИЙ-В про», Україна, 03067, місто Київ, вул. Гарматна, будинок 6, код за ЄДРПОУ 43764128, адреса виробництва: м. Київ, вул. Гарматна, 6

(адреса, місцезнаходження, телефон, факс, E-mail, веб-сайт)

Заявник експертизи: ТОВ «КИЙ-В про», Україна, 03067, місто Київ, вул. Гарматна, будинок 6, код за ЄДРПОУ 43764128

(адреса, місцезнаходження, телефон, факс, E-mail, веб-сайт)

Дані про контракт на постачання об'єкта в Україну: продукція вітчизняного виробництва

Об'єкт експертизи відповідає встановленим медичним критеріям безпеки/показникам:

Обладнання кухонне виготовлене згідно з додатком до Висновку відповідає вимогам Державних санітарних норм та правил ДСанПіН 8.2.1-181-2012 «Полімерні та полімервмісні матеріали, вироби і конструкції, що застосовуються у будівництві та виробництві меблів»: рівень міграції хімічних речовин у повітряне середовище (ГДК с.д., мг/м³, не більше): формальдегіду - 0,003. Продукція, яка контактує з харчовими продуктами відповідає вимогам Регламенту (ЄС) № 1935/2004 від 27.10.2004 р. про матеріали і вироби, призначені для контакту з харчовими продуктами, Регламенту Комісії (ЄС) № 10/2011 від 14 січня 2011 р. щодо пластмасових матеріалів та виробів, призначених для контакту з харчовими продуктами та Інструкції 880-71 «Інструкція по санітарно-хімічному дослідженню изделий изготовленных из полимерных и других синтетических материалов, предназначенных для контакта с пищевыми продуктами»: інтенсивність запаху - не більше 1 балу, інтенсивність запаху водних витяжок, не більше – 1 балу, присмак - 0 балів, без кольору, мутності та опалесценції; кількість міграції хімічних речовин у модельне рідке середовище (ДКМ, не більше, мг/л): формальдегіду - 0,10; міді, миш'яку, свинцю, хрому, цинку – не допускаються; титану - 0,10; фтору – 0,50. За ефективною питомою активністю природних радіонуклідів Аеф – не більше 370 Бк/кг відповідно до «Норми радіаційної безпеки України» (НРБУ-97).

Необхідними умовами використання/застосування, зберігання, транспортування, утилізації, знищення є: при застосуванні виробів дотримання вимог, встановлених даним висновком за результатами випробувань наданих заявником зразків на відповідність вимогам Регламенту Європейського Парламенту та Ради (ЄС) №1935/2004 від 27 жовтня 2004 року про матеріали та вироби, призначені для контакту з харчовими продуктами та Регламенту Комісії (ЄС) № 10/2011 від 14 січня 2011 р. щодо пластмасових матеріалів та виробів, призначених для контакту з харчовими продуктами; Інструкції 880-71 «Инструкция по санитарно-химическому исследованию изделий, предназначенных для контакта с пищевыми продуктами»; забезпечення умов транспортування, зберігання, використання та утилізації продукції - згідно з Інструкцією виробника.

За результатами державної санітарно-епідеміологічної експертизи: Обладнання кухонне виготовлене згідно з додатком до Висновку, за наданими заявником зразками відповідають вимогам діючого санітарного законодавства України і за умови дотримання вимог цього висновку можуть бути використані в заявленій сфері застосування.

Термін придатності: гарантується виробником

Інформація щодо етикетки, інструкції, правил тощо: етикетка та інструкція з використання вимагаються. Висновок не може бути використаний для реклами споживчих якостей об'єкту експертизи

Висновок дійсний: на термін дії ТУ У 27.5-43764128-002:2021 «ОБЛАДНАННЯ КУХОННЕ МЕТАЛЕВЕ ПРОФЕСІЙНЕ ДЛЯ ПІДПРИЄМСТВ ГРОМАДСЬКАОГО ХАРЧУВАННЯ. ТЕХНІЧНІ УМОВИ»

Відповідальність за дотримання вимог цього висновку несе заявник.

При зміні рецептури, технології виготовлення, які можуть змінити властивості об'єкта експертизи або спричинити негативний вплив на здоров'я людей, сфери застосування, умов застосування об'єкта експертизи даний висновок втрачає силу.

Показники безпеки, які підлягають контролю на кордоні: контролю не підлягає

Показники безпеки, які підлягають контролю при митному оформленні: контролю не підлягає

Поточний державний санітарно-епідеміологічний нагляд здійснюється згідно з вимогами цього висновку: виконання умов використання

Комісія для проведення державної санітарно-епідеміологічної експертизи в особливо складних випадках при державній установі «Інститут медицини праці імені Ю.І. Кундієва Національної академії медичних наук України»

Протокол експертизи

Голова комісії

01033, м. Київ, вул.Саксаганського, 75,

тел.: (044) 289-00-21,

e-mail: info@imtuik.org.ua;

web-сайт: <http://www.imtuik.org.ua>

(найменування, місцезнаходження, телефон, факс, E-mail, веб-сайт)

№ 1021 від 02 травня 2023 року

(№ протоколу, дата його затвердження)

реєстраційний код 22946304

МП

(підпис)

Іщейкін К.Є.
(ініціали та прізвище)

Додаток до Висновку санітарно-епідеміологічної експертизи

від 05.07. 2023 р.

№ 12.2-18-1/ 8517

**Обладнання кухонне виготовлені у відповідності із ТУ У 27.5-43764128-002:2021
«ОБЛАДНАННЯ КУХОННЕ МЕТАЛЕВЕ ПРОФЕСІЙНЕ ДЛЯ ПІДПРИЄМСТВ
ГРОМАДСЬКАОГО ХАРЧУВАННЯ. ТЕХНІЧНІ УМОВИ» (Код за ДКПП: 28.93)**

1. База під кавомашину БКВ*	48. Пристрій для розкачування тіста ручний ТР *
2. Бак Б*	49. Рукомийник РМ*
3. Бак для відходів БВ*	50. Рукомийник навісний РН*
4. Візок вантажний В-В*	51. Скло захисне СО*
5. Візок для білизни В-Б*	52. Смітник СМ*
6. Візок для поп-корну В-ПК*	53. Станція бармена СБ*
7. Візок для солодкої вати В-УСВ*	54. Стелаж виробничий СЖВ*
8. Візок для термоконтейнера В-ТК*	55. Стелаж гастрономічний СЖГ*
9. Візок сервірувальний В-С*	56. Стелаж для зберігання кухонного посуду СЖЗКП*
10. Візок В*	57. Стелаж для зберігання продуктів СЖЗП*
11. Вішало для півтуш ВП*	58. Стелаж для зберігання СЖЗ*
12. Гак для вішала туш ГВТ*	59. Стелаж для зберігання столового посуду СЖЗСП*
13. Деко Д*	60. Стелаж для зберігання хліба в лотках СЖЗХЛ*
14. Дозатор для приготування пончиків ДП*	61. Стелаж кондитерський СЖК*
15. Елемент нейтральний ЕН*	62. Стелаж обшитий СЖО*
16. Ємність Є*	63. Стелаж-сушка виробничий СЖСВ*
17. Жироуловлювач Ж*	64. Стійка для столових приборів та підносів ССПП*
18. Крохмалоуловлювач КЛ*	65. Стіл виробничий СВ*
19. Зонт витяжний ЗВ*	66. Стіл для виробів із борошна СВБ*
20. Зонт припливно-витяжний ЗПВ*	67. Стіл для доочищення картоплі СДК*
21. Каркас К*	68. Стіл для збирання залишків їжі СДІ*
22. Комплект тари для продуктів КТ*	69. Стіл для риби на льоду СВР-Л*
23. Конструкція з металу КМт*	70. Стіл для риби СВР*
24. Конструкція з нержавіючої сталі КНС*	71. Стіл для розробки СР*
25. Конструкція з чорного металу КЧМ*	72. Стіл С*
26. Коптильня з гідрозатвором КП-Г*	73. Стіл-мийка виробничий СМВ*
27. Кухня модульна КМ*	74. Стіл-мийка виробничий СМВШ*
28. Люлька для стегон Л*	75. Стіл-мийка СМ*
29. Мийка виробнича МВ*	76. Стіл-тумба виробничий з мийкою СТМВ
30. Мийка виробнича МВШ*	77. Стіл-тумба виробничий СТВ*
31. Мийка М*	78. Стіл-тумба СТ*
32. Мийка тумба виробнича МТВ	79. Стільниця С*
33. Мийка-тумба МТ*	80. Сушка для кухонних дощок СКД*
34. Місце касира МК*	81. Сушка навісна для посуду СНП
35. Набір для зняття шампура НШ-ГК*	82. Термоконтейнер ТК*
36. Надставка на вітрину НВ*	
37. Підставка для гастроємностей ПДГ*	
38. Підставка П*	
39. Підставка під гриль П-ГК	
40. Підставка під пароконвектомат ППт*	

41. Підтоварник ПТ*	83. Фреш-станція ФШС*
42. Підставка для коно-піци ПКП*	84. Шампур для курей Ш*
43. Полиця навісна ПН*	85. Шампур для риби ШР*
44. Полка навісна для сушки посуду ПНСП*	86. Шафа для посуду ШФП*
45. Прилавок для столових приборів ПСП*	87. Шафа для хліба ШФХ*
46. Прилавок пересувний ізотермічний ППЗ*	88. Шафа ШФ*
47. Прилавок торгівельний ПТП*	89. Ящик-ноші ЯН*

Де замість * можливі літери та/ або цифри, що позначають дизайн виробів (колір, форма, розмір, конструктивні рішення та ін.), який не впливає на показники електробезпеки та рівень радіозавад. Кількість цифр або літер не обмежується кількістю умовних знаків (*)

Комісія для проведення державної санітарно-епідеміологічної експертизи в особливо складних випадках при державній установі «Інститут медицини праці імені Ю.І. Кундієва Національної академії медичних наук України»

01033, м. Київ, вул.Саксаганського, 75,
тел.: (044) 289-00-21,
e-mail: info@imtuik.org.ua;
web-сайт: <http://www.imtuik.org.ua>

(найменування, місцезнаходження, телефон, факс, E-mail, веб-сайт)

Протокол експертизи

№ 1021 від 02 травня 2023 року
(№ протоколу, дата його затвердження)

Голова комісії

МП

(підпис)

Шейкін К.Є.
(ініціали та прізвище)

ДКПП 28.93
ДКПП 31.02.10-00.00

УКНД 97.040



ЗАТВЕРДЖУЮ

Директор

ТОВ «КІЙ-В про»

О.А. Востров

2021 р.

**ОБЛАДНАННЯ КУХОННЕ МЕТАЛЕВЕ ПРОФЕСІЙНЕ ДЛЯ
ПІДПРИЄМСТВ ГРОМАДСЬКОГО ХАРЧУВАННЯ**

Технічні умови

ТУ У 28.9-43764128-002:2021

(Введено вперше)

Дата надання чинності 22.04. 2021 р.

Без обмеження терміну дії



РОЗРОБЛЕНО

Консультант

ТОВ «КІЙ-В про»

Д.М. Дячок

«16» квітня 2021 р.

МІНЕКОНОМІКИ

Державне підприємство

«Тернопільський науково-виробничий центр
стандартизації метрології та сертифікації»

ДП «Тернопільстандартметрологія»

ідентифікаційний код 02568319

ПЕРЕВІРЕНО

на відповідність законодавству України

«22» 04 20 21 р.

Внесено до книги обліку за № 02568319/003460

інв. № подл.	Підпис і дата
Взам. інв. №	Інв. № дубл.
Підпис і дата	Підпис і дата

CONVEYOR TYPE DISHWASHER WITH DRYING TUNEL

CONTENTS

A	GENERAL INFORMATION	Page 2
A1	PRODUCT DESCRIPTION	Page 3
A2	TECHNICAL INFORMATION	Page 3
A3	TRANSPORTATION	Page 4
A4	UNPACKING	Page 4
B	INSTALLATION	Page 4
C	SAFETY INSTRUCTIONS	Page 5
D	OPERATION	Page 6
E	CLEANING & MAINTENANCE	Page 8
F	TROUBLESHOOTING	Page 9
G	SPARE PART LIST- EXPLODING DRAWING	Page 10
H	ELECTRIC CIRCUIT SCHEMA	Page 18

A GENERAL INFORMATION

Before installing the appliance, read operation and maintenance instructions carefully. Wrong installation and part changing may damage the product or may cause injury on people. These are not in our company's responsibility to damage the appliance intentionally, negligence, detriments because of disobeying instructions and regulations, wrong connections. Unauthorized intervention to appliance invalidates the warranty.

1. This instruction manual should be kept in a safe place for future reference.
2. **Installation should be made in accordance with ordinances and security rules of that country by a qualified service personnel.**
3. This appliance has to be used by trained person.
4. Please turn off the appliance immediately in the event of malfunction or failure. The appliance should be repaired only by authorized service personnel. Please demand original spare part.



CONVEYOR TYPE DISHWASHER WITH DRYING TUNEL

A1 PRODUCT DESCRIPTION

*The Professional Conveyor Type Dishwasher ,that provides high efficiency has been designed to be used in industrial kitchens.

Product Code	Dimensions (mm)	Weight (kg)	Packaging Dimensions (mm)
EMP.2000-SAG-R	1900x837x2000	317	2200x930x2040
EMP.2000-SOL-L	1900x837x2000	317	2200x990x2040
EMP.3000-SAG-R	2561x837x2000	405	2930x990x2040
EMP.3000SOL-L	2561x837x2000	405	2930x990x2040

A2 TECHNICAL INFORMATION

Product Code	EMP.2000	EMP.3000
Capacity (Plate/ hour)	2000	3000
Burner Power (Kw)	24	24
Tank Power (Kw)	12	12
Drying Unit Motor Power (Kw)	9	9
Motor Power at without prewashing machines (Kw)	0,55 x2	0,55x3
Total Power (KW)	48	48
Operating Voltage (V)	380	380
Cable (mm ²)	5x16	5x16
Fuse (A)	Min. 80	Min. 80
Control Current (V)	24	24

CONVEYOR TYPE DISHWASHER WITH DRYING TUNEL

A3 TRANSPORTATION

*This appliance can not be moved by hand from area to area. It must be moved on pallet with forklift truck.

A4 UNPACKING

*Please unpack the package according to the security codes and ordinances of current country and get rid from the pack. Parts which contacts with food are produced by stainless steel. All plastic parts are marked by material's symbol.

*Please check that all the parts of appliance had come completely and if they are damaged or not during the shipping.

B INSTALLATION

*Please place the product to straight and sturdy ground, please take necessary steps against possibility of overturn.

*Technician who will serve for installation and service for the appliance must be professional on this subject and must have installation and service licenses by the company.

*Connection to Electric Power Supply must be done by authorized person.

*Please be sure that the voltage connected to appliance must be equal with the voltage which is on appliance's label.














This appliance must be connected to an earthed outlet in accordance with safety rules and standards.

*Appliance's earthing must be connected to earthing line on panel which is nearest to electric installation.

*Connection to the main fuse and leak current fuse must be done in accordance with the current regulations.

CONVEYOR TYPE DISHWASHER WITH DRYING TUNEL

C SAFETY INSTRUCTIONS

-  *Do not use the appliance in insufficient lighted place.
-  *Do not touch the moving attachments while the appliance operates.
-  *Do not install the appliance in the presence of flammable or explosive materials.
-  *Do not operate the appliance when the machine is empty.
-  *Do not load so less or more than appliance's capacity.
-  *Do not attempt to use the appliance without suitable protective equipments.
-  *Because of any reason if there is a fire or flame flare where the appliance is used, turn off all gas valves and electric contactor switch quickly and use fire extinguisher. Never use water to extinguish the fire.
-  *All the damages because of not having earthing connection will not be on warranty.
-  *Do not wash the plastic materials that are not durable against temperature and solutions.
-  *Do not cover the appliance with anything. There are absorption holes that mustn't be covered.
-  *Use suitable detergents for aluminium to prevent aluminium stewpots and trays to leave black colour.

CONVEYOR TYPE DISHWASHER WITH DRYING TUNEL

D OPERATION

*Control Panel;



CONVEYOR TYPE DISHWASHER WITH DRYING TUNEL

*Operating;

- ³⁵/₁₇ Before putting the dishes in to the appliance,make prewash with cold or warm water without using any detergent.Turn off the waste water outlet stopple.
- ³⁵/₁₇ Turn on the water source valve and plug in the appliance.
- ³⁵/₁₇ In order to take off any residue that remain in storage or pipes,operate the appliance when it is empty.
- ³⁵/₁₇ Open the machine's lid.Check if there is motor filter,field strainer,separation cloaks and washing handles.Then close the machine's lid.
- ³⁵/₁₇ Check if there is detergent at material storage.Fill the storages at suitable time to get good washing or change.
- ³⁵/₁₇ Switch to 'water inlet ' to operate the appliance.
- ³⁵/₁₇ Complete and automatic washing is done minimum at 55°C,rinsing with hot water is done at minimum 80-85°C.
- ³⁵/₁₇ Main washing unit's tank and burner is filled automatically and heated.
- ³⁵/₁₇ Add detergent to the main washing unit's tank regularly.
- ³⁵/₁₇ After 'Ready Lamp' signals,the conveyor can be operated.
- ³⁵/₁₇ Switch to 2.Speed Position to chanfe conveyor's speed.
- ³⁵/₁₇ Push the baskets into the machine.Baskets are pulled to inside automatically.
- ³⁵/₁₇ Rinsing is activated by a second basket switch.
- ³⁵/₁₇ Leave the baskets at the outlet bench till it dries.In order to go on washing process,remove the baskets from outlet bench before the baskets reach to bench end ratchet.

CONVEYOR TYPE DISHWASHER WITH DRYING TUNEL

E CLEANING & MAINTENANCE

CLEANING AND MAINTENANCE AFTER EVERY USE

- ³⁵/₁₇ Always turn off the appliance and disconnect from the power supply before cleaning.
- ³⁵/₁₇ Drain the water by taking off the stopple after every use.
- ³⁵/₁₇ If the machine has drainage pump, use this pump for drainage.
 - Turn off the drainage pump.
 - Air of drainage is drained.
 - If air bubble doesn't go up, operate the drainage pump.
- ³⁵/₁₇ Use water hose and brush to clean inside of the appliance after every use.
- ³⁵/₁₇ Clean the control panel with a soft moist cloth and if necessary use detergent.
- ³⁵/₁₇ Do not use abrasive cleaning chemicals as these can leave harmful residues.
- ³⁵/₁₇ Do not clean the appliance by spraying water directly, otherwise electric motor may get damaged.

PERIODIC CLEANING AND MAINTENANCE

- ³⁵/₁₇ Maintenance should be done by qualified person.
- ³⁵/₁₇ Clean the impurity filter every month.
- ³⁵/₁₇ Clean the washing handles once in 15 days.
- ³⁵/₁₇ The lime coats and impurities, oil residues may cause hygienic risk and heater parts may get damaged due to limes. Therefore these residues must be cleaned regularly.
 - Add suggested amount of lime remover to machine's tank.
 - Operate the machine with empty baskets till all lime residues are cleaned. Lime remover mustn't remain in the machine more than couple hours.
 - Drain the dirty water.
 - Provide the machine to be filled with water again.
 - In order to remove lime remover residues from washing system, operate the machine with empty baskets.
 - Drain the machine's water again.
 - Step in the detergent amount adjustment.

CONVEYOR TYPE DISHWASHER WITH DRYING TUNEL

F TROUBLESHOOTING

THE APPLIANCE DOESN'T OPERATE	<ol style="list-style-type: none"> 1. Switch on. 2. Change the fuses at the fitting.
THE APPLIANCE DOESN'T FILL	<ol style="list-style-type: none"> 1. Close the machine's lid. 2. Turn on the water valve.
BASKET CONVEYOR DOESN'T OPERATE	<ol style="list-style-type: none"> 1. Set free the ratchet at the end of bench. 2. Close the machine's lid.
THE DISHES ARE NOT WASHED WELL	<ol style="list-style-type: none"> 1. Adjust the detergent amount according to producer instructions. 2. Check the washing hoses.Change material storage. 3. Check detergent setting device. 4. Do not accumulate the dishes. 5. Take off the washing handles and clean the nozzles. 6. Reduce the speed. 7. Check the temperature,if it is not as desired,contact with authorized service.
RESIDUES ON DISHES	<ol style="list-style-type: none"> 1. Check the external water preparing system. 2. The temperature must be maximum 30°C.
DISHES ARE NOT DRIED	<ol style="list-style-type: none"> 1. Check the amount of polisher. 2. Check the drainage hoses.Change the polisher storage. 3. Check the polisher setting device.
BASKETS ARE NOT MOVED TO MACHINE	<ol style="list-style-type: none"> 1. Remove the baskets. 2. Contact with authorized service.

³⁵/₁₇ If dishwashing is not done at suitable quality

³⁵/₁₇ If any function of security doesn't work

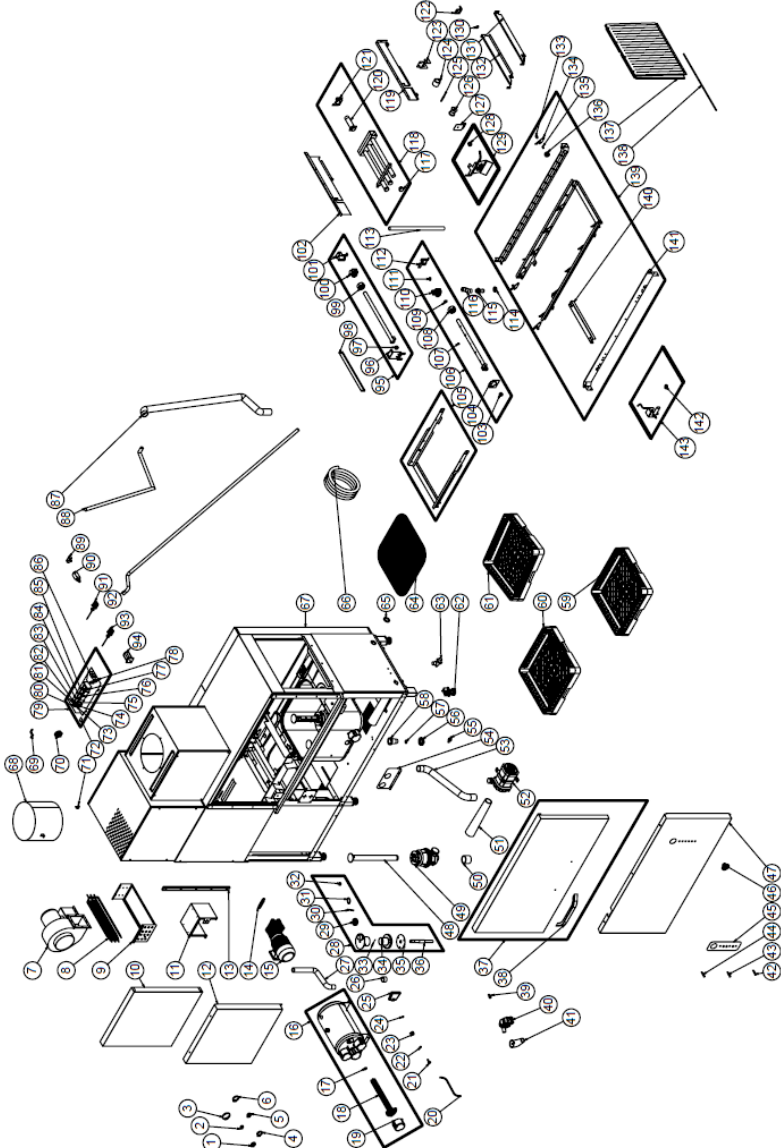
Do not use the appliance.

***If these problems are still going on,contact with our authorized services.**



CONVEYOR TYPE DISHWASHER WITH DRYING TUNEL

G SPARE PART LIST-EXPLODING DRAWING



EMP.2000-SAĞ-R / EMP.2000-SOL-L

CONVEYOR TYPE DISHWASHER WITH DRYING TUNEL

G SPARE PART LIST-EXPLODING DRAWING

PRODUCT CODE:EMP.2000-SAG-R / EMP.2000-SOL-L		
NO	NAME OF THE PRODUCT	PRODUCT CODE
1	HOSE CLAMP (20-32MM)	ERS.M.MEK-TES-KLP-005
2	HOSE CLAMP (12-20MM)	ERS.M.MEK-TES-KLP-002
3	HOSE CLAMP (40-60MM)	ERS.M.MEK-TES-KLP-003
4	HOSE CLAMP (25-40MM)	M.MEK-TES-KLP-004
5	HOSE CLAMP (68-73MM)	ERS.M.MEK-TES-INX-010
6	HOSE CLAMP (8-12MM)	M.MEK-TES-KLP-011
7	DRYING FAN MOTOR	M.ELK-HVL-SFN-002
8	220V/1500W DRYING RESISTANT	M.ELK-RZS-BRU-BYM-006
9	RESISTANCE CONNECTION SHEET	YSC-ERS.BYM-LZ-0315
10	DRYING FRONT TOP SHEET	YSC-ERS.BYM-PN-0252
11	DRYING FAN CONNECTION SHEET	YSC-ERS.BYM-LZ-0313
12	DRYING LOWER FRONT SHEET	YSC-ERS.BYM-PN-0253
13	PLASTIC SLIDE	M.ENJ-ERS-PLS-BYM-117
14	ENGINE TENSION SPRING	M.YAY-ERS-049
15	GEAR ENGINE	M.ELK-MTR-RLM-004
16	BOILER	ARA-ERS.BYM-0006
17	ORING (7X57)	M.CNT-ORG-012
18	BOILER RESISTANCE 380V-6000W	M.ELK-RZS-BRU-BYM-029
19	RESISTANCE COVER	M.ENJ-ERS-PLS-BYM-028
20	PROCESTAT HOSE	HTS-HRT-008
21	AIR TRAP SHAFT	YTL-ERS.BYM-KS-0002
22	ORING (2,5X11)	M.CNT-ORG-002
23	AIR TRAP LOCATION	M.ENJ-ERS-PLS-BYM-015
24	ORING (3X11)	M.CNT-ORG-003
25	AIR TRAP	M.ENJ-ERS-PLS-BYM-019
26	SMALL BUSHING ELEMENT	YTL-ERS.BYM-KS-0126
27	RINSE HOSE	M.MEK-TES-HRT-093
28	CONVEYOR MECHANISM	ARA-ERS.BYM-0019
29	BEARING (6304 2RS C3)	M.RLM-NRM-028
30	KAMA 6*6*61	M.KAM-6*6*61
31	RING (471-20)	B-SEG-SYH-018
32	FELT 20*52*10	M.CNT-KCE-028
33	CONVEYOR PIN	YTL-ERS.BYM-KS-0049
34	REDUCER SLEEVE	YDK-ERS.BYM-CN-0004
35	SILICONE GASKET	M.ENJ-ERS-LST-026
36	LARGE GEAR BUSH	YTL-ERS.BYM-KS-0117
37	LID	ARA-ERS.BYM-0018
38	DOOR HANDLE	ERS.M.AKS-KLP-INX-002
39	DETERGENT ENTRY PLASTIC	M.PLS-ERS-036
40	DRAIN PUMP	M.ELK-MTR-PMP-002
41	DRAIN HOSE	M.MEK-TES-HRT-073
42	GREEN WARNING LAMP	ERS.M.ELK-LMB-SNY-001
43	YELLOW WARNING LAMP	ERS.M.ELK-LMB-SNY-003
44	RED WARNING LAMP	M.ELK-LMB-SNY-009
45	PANEL LABEL	M.AKS-ETK-LKS-ERS-BYM-

CONVEYOR TYPE DISHWASHER WITH DRYING TUNEL

46	BUTTON	M.AKS-DGM-MUH-002
47	OUTER FRONT SHEET	YSC-ERS.BYM-LZ-0343
48	DRAIN PLUG	YBR-ERS.BYM-KS-0045
49	DISCHARGE GROUP	M.ENJ-ERS-PLS-BYM-125
50	FILTER HOSE	M.MEK-TES-HRT-096
51	PUMP HOSE	M.MEK-TES-HRT-095
52	WASHING MOTOR	M.ELK-MTR-PMP-001
53	PUMP SPRAY HOSE	M.MEK-TES-HRT-088
54	RESISTANCE HANGER SHEET	YSC-ERS.BYM-LZ-0505
55	RINSE A T	M.PLS-ERS-035
56	WEDGE NUT	M.ENJ-ERS-PLS-BYM-012
57	ORING (4X40)	M.CNT-ORG-007
58	WEDGE LOCATION	M.ENJ-ERS-PLS-BYM-011
59	PLATE BASKET	EMP.TB.01
60	SPOON FORK BASKET	EMP.KC.01
61	GLASS BASKET	EMP.BB.01
62	ROTARY FEET	ERS.M.AKS-AYK-PLS-005
63	VALVE (14 LT)	M.ELK-SLN-PLS-001
64	BOILER FILTER PLASTIC	M.ENJ-ERS-PLS-BYM-121
65	DRAIN PIPE RUBBER	M.ENJ-ERS-LST-040
66	MAINS HOSE	M.MEK-TES-HRT-021
67	CHASSIS	-
68	VENTILATION CHIMNEY SHEET	YSC-ERS.BYM-PN-0275
69	PROCESTAT CONNECTION PLASTIC	M.ENJ-ERS-PLS-BYM-058
70	PROCESTAT FLOAT	M.ELK-MUH-016
71	FLUE CONNECTION SHEET	YSC-ERS.BYM-PN-0276
72	MM-B38L-YA MAGNETIC SENSOR	M.ELK-SWC-KTG-005
73	RELAY	M.ELK-KNT-ROL-011
74	RELAY SOCKET	M.ELK-KNT-ROL-010
75	TIMER	ERS.M.ELK-KNT-ROL-007
76	LOAD RELAY	ERS.M.ELK-KNT-ROL-021
77	LOAD RELAY	ERS.M.ELK-KNT-ROL-022
78	PANEL SHEET	YSC-ERS.KD-LZ-0045
79	PANEL GROUP	M.ELK-KD-EDM-002
80	MINI CONTACTOR	ERS.M.ELK-KNT-KNT-020
81	CONTACTOR	ERS.M.ELK-KNT-KNT-027
82	evacuation time relay	M.ELK-KNT-ROL-026
83	RELAY SOCKET	ERS.M.ELK-KNT-ROL-019
84	ROLE 230 V	ERS.M.ELK-KNT-ROL-023
85	TIMER	ERS.M.ELK-KNT-ROL-027
86	EZ9F43325 25A THREE PHASE FUSE	M.ELK-SGR-014
87	PUMP SPRAY HOSE 2	M.MEK-TES-HRT-087
88	WASTE WATER HOSE	M.MEK-TES-HRT-034
89	SWITCH	M.ELK-SWC-OZEL-005
90	SWITCH	ERS.M.ELK-SWC-EMAS-001
91	THERMOSTAT 0-90°C	M.ELK-MEK-TRM1-008
92	VALVE HOSE	M.MEK-TES-HRT-098
93	THERMOSTAT 30-120 °C	M.ELK-MEK-TRM1-013
94	LEVER	M.ELK-SLT-PKO-017



CONVEYOR TYPE DISHWASHER WITH DRYING TUNEL

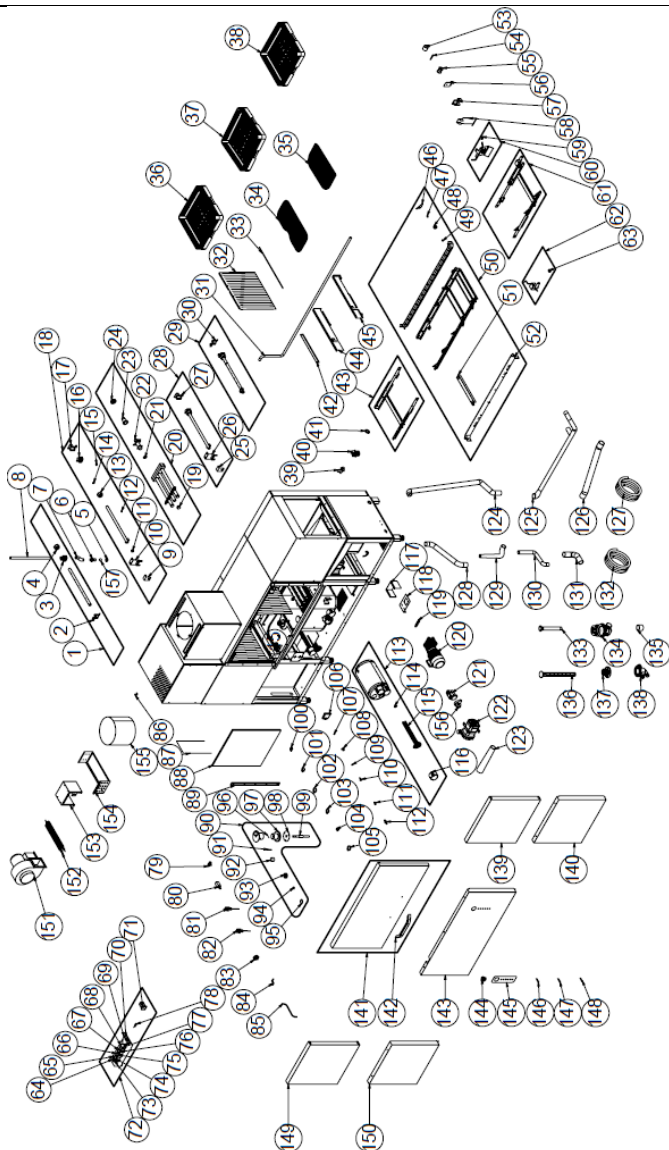
95	RINSE TOP SPRAY	ARA-ERS.BYM-0003
96	UPPER SUPPLY CONNECTION SHEET	YSC-ERS.BYM-PN-0291
97	PIPE PLUG	YTL-ERS.BYM-KS-0083
98	AIR VALVE SHEET	YSC-ERS.BYM-PN-0274
99	RINSE NUT	M.ENJ-ERS-PLS-BYM-118
100	UPPER NUT PROVISION	M.ENJ-ERS-PLS-BYM-119
101	SHOPPING SHEET	YSC-ERS.BYM-LZ-0429
102	FOUNTAIN UPPER LEFT SLIDE SHEET	YSC-ERS.BYM-LZ-0332
103	PIPE PLUG	YTL-ERS.BYM-KS-0083
104	BOTTOM SUPPLY CONNECTION SHEET	YSC-ERS.BYM-LZ-0337
105	CONVEYOR DRYING	ARA-ERS.BYM-0016
106	RINSE BOTTOM SPRAY	ARA-ERS.BYM-0004
107	RINSE STEP	YTL-ERS.BYM-KS-0044
108	RINSE NUT	M.ENJ-ERS-PLS-BYM-118
109	ORING Ø24,99*3,53	M.CNT-ORG-037
110	UPPER NUT PROVISION	M.ENJ-ERS-PLS-BYM-120
111	ORING (3X11)	M.CNT-ORG-003
112	WATER INLET CONNECTION SHEET	YSC-ERS.BYM-LZ-0342
113	INTERMEDIATE PIPE	YBR-ERS.BYM-KS-0037
114	WEDGE NUT	M.ENJ-ERS-PLS-BYM-012
115	CONNECTION PLASTIC	M.ENJ-ERS-PLS-BYM-130
116	FOIN CONNECTION HOSE	M.MEK-TES-HRT-099
117	ARM PLUG	YTL-ERS.BYM-KS-0047
118	MAIN WASHING SPIN	ARA-ERS.BYM-0001
119	FOUNTAIN UPPER RIGHT SLIDE SHEET	YSC-ERS.BYM-LZ-0333
120	PRESSURE PIPE	YBR-ERS.BYM-KS-0036
121	PIPE CONNECTION SHEET	YSC-ERS.BYM-LZ-0168
122	PRESSURE PIPE STOP SHEET	YSC-ERS.BYM-PN-0293
123	SPRING TOP CONNECTION SHEET	YSC-ERS.BYM-LZ-0443
124	COVER MECHANISM SPRING	M.YAY-ERS-010
125	STRAINER BEARING SHAFT	YTL-ERS.BYM-KS-0003
126	SPRING CONNECTION	YTL-ERS.BYM-KS-0046
127	SPRING LOWER CONNECTION SHEET	YSC-ERS.BYM-LZ-0444
128	MAGNET	M.MIK-ERS-006
129	RINSE MECHANISM	ARA-ERS.BYM-0039
130	ORING 31.5*3.5	M.CNT-ORG-036
131	FOUNTAIN LOWER RIGHT SLIDE SHEET	YSC-ERS.BYM-LZ-0335
132	SHOPPING BOTTOM LEFT SHEET	YSC-ERS.BYM-LZ-0334
133	ZODIAC SIGN	YTL-ERS.BYM-KS-0082
134	BASKET PUSHER SHEET	YSC-ERS.BYM-PN-0267
135	WASHING ELEMENT	YBR-ERS.BYM-KS-0043
136	CONVEYOR WHEEL	YTL-ERS.BYM-KS-0084
137	CURTAIN	ERS.M.MUH-105
138	CURTAIN SHAFT 620 MM	HDM-ML-304-5,80-005
139	CONVEYOR	ARA-ERS.BYM-0017
140	ENGINE CONNECTION SHEET	YSC-ERS.BYM-PN-0290
141	CONVEYOR TOP SHEET	YSC-ERS.BYM-LZ-0336
142	MAGNET	M.MIK-ERS-010
143	START SWITCH	ARA-ERS.BYM-0038





CONVEYOR TYPE DISHWASHER WITH DRYING TUNEL

G SPARE PART LIST-EXPLODING DRAWING



EMP.3000-SAĞ-R / EMP.3000-SOL-L



CONVEYOR TYPE DISHWASHER WITH DRYING TUNEL

G SPARE PART LIST-EXPLODING DRAWING

PRODUCT CODE:EMP.3000-SAG-R / EMP.3000-SOL-L		
NO	NAME OF THE PRODUCT	PRODUCT CODE
1	RINSE BOTTOM SPRAY	ARA-ERS.BYM-0004
2	SUPPLY WATER INLET CONNECTION SHEET	YSC-ERS.BYM-LZ-0342
3	BOTTOM NUT PROVISION	M.ENJ-ERS-PLS-BYM-120
4	RINSE NUT	M.ENJ-ERS-PLS-BYM-118
5	INLET NUT	M.ENJ-ERS-PLS-BYM-131
6	CONNECTION PLASTIC	M.ENJ-ERS-PLS-BYM-130
7	SPRAY CONNECTION HOSE	M.MEK-TEH-HRT-099
8	FRONT WASHER INTERMEDIATE PIPE	YBR-ERS.BYM-KS-0037
9	TOP SPRAY LOCK SHEET	YSC-ERS.BYM-PN-0272
10	TOP SPRAY CONNECTION SHEET	YSC-ERS.BYM-PN-0291
11	PIPE PLUG	YTL-ERS.BYM-KS-0083
12	RINSE STEP	YTL-ERS.BYM-KS-0044
13	RINSE NUT	M.ENJ-ERS-PLS-BYM-118
14	ORING Ø24.99*3.53	M.CNT-ORG-037
15	ORING (3X11)	M.CNT-ORG-003
16	UPPER NUT PROVISION	M.ENJ-ERS-PLS-BYM-119
17	SHOPPING SHEET	YSC-ERS.BYM-LZ-0429
18	RINSE TOP SPRAY	ARA-ERS.BYM-0003
19	ARM PLUG	YTL-ERS.BYM-KS-0047
20	MAIN WASH SPIN	ARA-ERS.BYM-0001
21	ORING 31.5*3.5	M.CNT-ORG-036
22	FOUNTAIN PRESSURE PIPE	YBR-ERS.BYM-KS-0036
23	WEDGE LOCATION	M.ENJ-ERS-PLS-BYM-011
24	WEDGE NUT	M.ENJ-ERS-PLS-BYM-012
25	TOP SWITCH LOCK SHEET	YSC-ERS.BYM-PN-0272
26	UPPER SUPPLY CONNECTION SHEET	YSC-ERS.BYM-PN-0291
27	SHOPPING SHEET	YSC-ERS.BYM-LZ-0429
28	UPPER SPIN	ARA-ERS.BYM-0002
29	PRE-WASH LOWER SPRAY	ARA-ERS.BYM-0005
30	WATER INLET CONNECTION SHEET	YSC-ERS.BYM-LZ-0342
31	VALVE HOSE	M.MEK-TEH-HRT-098
32	CURTAIN	ERS.M.MUH-105
33	CURTAIN SHAFT	HDM-ML-304-5.80-005
34	BOILER FILTER PLASTIC	M.ENJ-ERS-PLS-BYM-121
35	FILTER PLASTIC	M.ENJ-ERS-PLS-BYM-116
36	PLATE BASKET	EMP.TB.01
37	SPOON FORK BASKET	EMP.KC.01
38	GLASS BASKET	EMP.BB.01
39	VALVE (14 LT)	M.ELK-SLN-PLS-001
40	ROTARY FEET	ERS.M.AKS-AYK-PLS-005
41	evacuation rubber	M.ENJ-ERS-LST-040
42	AIR VALVE SHEET	YSC-ERS.BYM-PN-0274
43	CONVEYOR DRYING	ARA-ERS.BYM-0016
44	FOUNTAIN UPPER LEFT SLIDE SHEET	YSC-ERS.BYM-LZ-0332
45	FOUNTAIN UPPER RIGHT SLIDE SHEET	YSC-ERS.BYM-LZ-0333
46	BASKET PUSHER SHEET	YSC-ERS.BYM-PN-0267
47	RING	YTL-ERS.BYM-KS-0082
48	CONVEYOR WHEEL	YTL-ERS.BYM-KS-0084
49	WASHING ELEMENT	YBR-ERS.BYM-KS-0043



CONVEYOR TYPE DISHWASHER WITH DRYING TUNEL

50	CONVEYOR	ARA-ERS.BYM-0017
51	ENGINE CONNECTION SHEET	YSC-ERS.BYM-PN-0290
52	CONVEYOR TOP SHEET	YSC-ERS.BYM-LZ-0336
53	COVER MECHANISM SPRING	M.YAY-ERS-010
54	STRAINER BEARING SHAFT	YTL-ERS.BYM-KS-0003
55	SPRING CONNECTION	YTL-ERS.BYM-KS-0046
56	SPRING LOWER CONNECTION SHEET	YSC-ERS.BYM-LZ-0444
57	SPRING TOP CONNECTION SHEET	YSC-ERS.BYM-LZ-0443
58	COVER STOP SHEET	YSC-ERS.BYM-LZ-0108
59	MAGNET	M.MIK-ERS-006
60	RINSE MECHANISM	ARA-ERS.BYM-0039
61	CONVEYOR PREWASH	ARA-ERS.BYM-0021
62	START SWITCH	ARA-ERS.BYM-0038
63	MAGNET	M.MIK-ERS-010
64	RELAY	M.ELK-KNT-ROL-011
65	RELAY SOCKET	M.ELK-KNT-ROL-010
66	TIMER	ERS.M.ELK-KNT-ROL-007
67	LOAD RELAY	ERS.M.ELK-KNT-ROL-021
68	LOAD RELAY	ERS.M.ELK-KNT-ROL-022
69	MINI CONTACTOR	ERS.M.ELK-KNT-KNT-020
70	CONTACTOR	ERS.M.ELK-KNT-KNT-027
71	LEVER	M.ELK-SLT-PKO-017
72	PANEL GROUP	M.ELK-KD-EDM-002
73	evacuation time relay	M.ELK-KNT-ROL-026
74	RELAY SOCKET	ERS.M.ELK-KNT-ROL-019
75	ROLE 230 V	ERS.M.ELK-KNT-ROL-023
76	TIMER	ERS.M.ELK-KNT-ROL-027
77	25A THREE PHASE FUSE	M.ELK-SGR-014
78	MAGNETIC SENSOR	M.ELK-SWC-KTG-005
79	SWITCH	ERS.M.ELK-SWC-EMAS-001
80	SWITCH	M.ELK-SWC-OZEL-005
81	THERMOSTAT 0-90°C	M.ELK-MEK-TRM1-008
82	THERMOSTAT 30-120 °C	M.ELK-MEK-TRM1-013
83	PROCESTAT FLOAT	M.ELK-MUH-016
84	PROCESTAT CONNECTION PLASTIC	M.ENJ-ERS-PLS-BYM-058
85	PROCESTAT HOSE	HTS-HRT-008
86	FLUE CONNECTION L SHEET	YSC-ERS.BYM-PN-0276
87	U WICK	HCN-LAS-ERS-002
88	PANEL PROTECTION COVER SHEET	YSC-ERS.BYM-LZ-0441
89	PLASTIC SLIDE	M.ENJ-ERS-PLS-BYM-117
90	CONVEYOR MECHANISM	ARA-ERS.BYM-0019
91	KAMA 6*6*61	M.KAM-6*6*61
92	zodiac ring	YTL-ERS.BYM-KS-0126
93	BEARING (6304 2RS C3)	M.RLM-NRM-028
94	FELT 20*52*10	M.CNT-KCE-028
95	RING (471-20)	B-SEG-SYH-018
96	CONVEYOR PIN	YTL-ERS.BYM-KS-0049
97	REDUCER SLEEVE	YDK-ERS.BYM-CN-0004
98	REDUCER SLEEVE SILICONE GASKET	M.ENJ-ERS-LST-026
99	LARGE GEAR BUSH	YTL-ERS.BYM-KS-0117
100	HOSE CLAMP (12-20MM)	ERS.M.MEK-TES-KLP-002
101	HOSE CLAMP (40-60MM)	ERS.M.MEK-TES-KLP-003
102	HOSE CLAMP (25-40MM)	M.MEK-TES-KLP-004
103	HOSE CLAMP (20-32MM)	ERS.M.MEK-TES-KLP-005



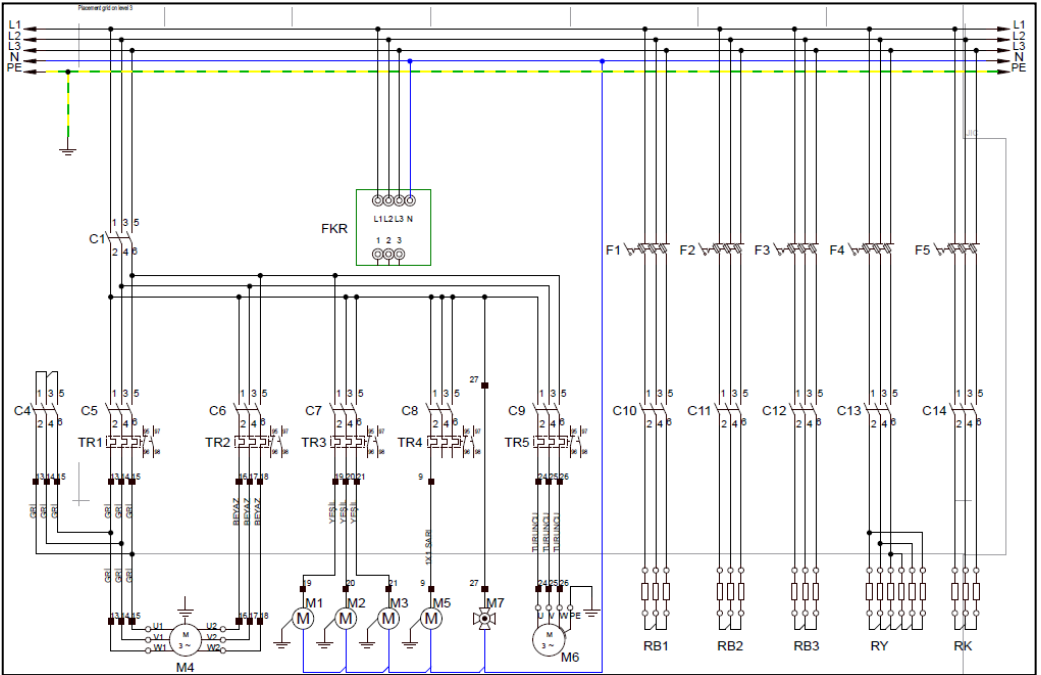
CONVEYOR TYPE DISHWASHER WITH DRYING TUNEL

104	HOSE CLAMP (8-12MM)	M.MEK-TES-KLP-011
105	HOSE CLAMP (68-73MM)	ERS.M.MEK-TES-INX-010
106	AIR TRAP	M.ENJ-ERS-PLS-BYM-019
107	ORING (3X11)	M.CNT-ORG-003
108	AIR TRAP LOCATION	M.ENJ-ERS-PLS-BYM-015
109	ORING (2.5X11)	M.CNT-ORG-002
110	AIR TRAP SHAFT	YTL-ERS.BYM-KS-0002
111	DETERGENT ENTRY PLASTIC	M.PLS-ERS-036
112	RINSE A T	M.PLS-ERS-035
113	BOILER	ARA-ERS.BYM-0006
114	ORING (7X57)	M.CNT-ORG-012
115	BOILER RESISTANCE 380V-6000W	M.ELK-RZS-BRU-BYM-029
116	RESISTANCE COVER	M.ENJ-ERS-PLS-BYM-028
117	ENGINE CONNECTION BODY SHEET	YSC-ERS.BYM-PN-0288
118	ENGINE CONNECTION BODY BASE SHEET	YSC-ERS.BYM-PN-0289
119	ENGINE TENSION SPRING	M.YAY-ERS-049
120	GEAR ENGINE	M.ELK-MTR-RLM-004
121	DRAIN PUMP	M.ELK-MTR-PMP-002
122	WASHING MOTOR	M.ELK-MTR-PMP-001
123	BOILER PUMP HOSE	M.MEK-TES-HRT-095
124	PUMP SPRAY HOSE 2	M.MEK-TES-HRT-087
125	DRAIN HOSE	M.MEK-TES-HRT-097
126	BOILER CONNECTION HOSE	M.MEK-TES-HRT-091
127	MAINS HOSE	M.MEK-TES-HRT-021
128	PUMP SPRAY HOSE 1	M.MEK-TES-HRT-088
129	PUMP PREWASH HOSE	M.MEK-TES-HRT-089
130	RINSE HOSE	M.MEK-TES-HRT-093
131	PREWASH BOILER PUMP HOSE	M.MEK-TES-HRT-090
132	WASTE WATER HOSE	M.MEK-TES-HRT-034
133	DRAIN WEDGE	M.ENJ-ERS-PLS-BYM-115
134	DISCHARGE GROUP	M.ENJ-ERS-PLS-BYM-125
135	FILTER HOSE	M.MEK-TES-HRT-096
136	DRAIN PLUG	YBR-ERS.BYM-KS-0045
137	FILTER COVER	M.ENJ-ERS-PLS-BYM-086
138	FILTER BODY+AIR TRAP	M.ENJ-ERS-PLS-BYM-088
139	BODY FRONT SHEET	YSC-ERS.BYM-PN-0299
140	BOTTOM COVER SHEET	YSC-ERS.BYM-PN-0300
141	LID	ARA-ERS.BYM-0018
142	DOOR HANDLE	ERS.M.AKS-KLP-INX-002
143	OUTER FRONT SHEET	YSC-ERS.BYM-LZ-0343
144	SWITCH BUTTON	M.AKS-DGM-MUH-002
145	PANEL LABEL	M.AKS-ETK-LKS-ERS-BYM-
146	GREEN WARNING LAMP	ERS.M.ELK-LMB-SNY-001
147	YELLOW WARNING LAMP	ERS.M.ELK-LMB-SNY-003
148	RED WARNING LAMP	M.ELK-LMB-SNY-009
149	DRYING FRONT TOP SHEET	YSC-ERS.BYM-PN-0252
150	DRYING LOWER FRONT SHEET	YSC-ERS.BYM-PN-0253
151	DRYING FAN MOTOR	M.ELK-HVL-SFN-002
152	220V/1500W DRYING RESISTANT	M.ELK-RZS-BRU-BYM-006
153	FAN CONNECTION SHEET	YSC-ERS.BYM-LZ-0313
154	RESISTANCE CONNECTION SHEET	YSC-ERS.BYM-LZ-0315
155	VENTILATION CHIMNEY SHEET	YSC-ERS.BYM-PN-0275
156	DRAIN PUMP PLASTIC	M.ENJ-ERS-PLS-BYM-111
157	ORING (4X40)	M.CNT-ORG-007



CONVEYOR TYPE DISHWASHER WITH DRYING TUNEL

H ELECTRIC CIRCUIT SCHEMA

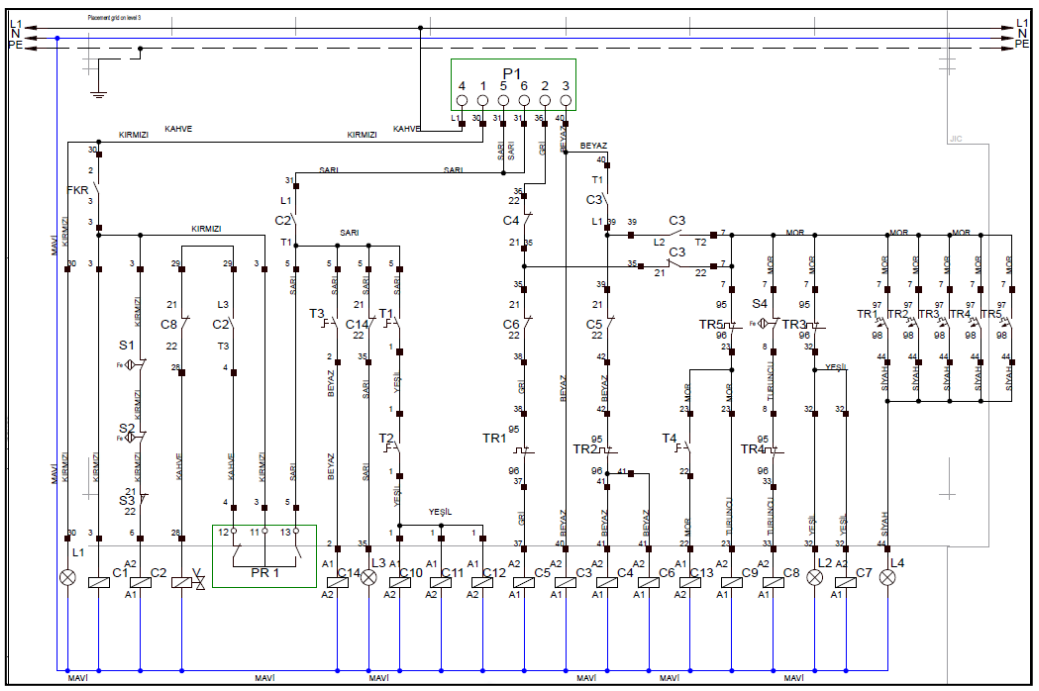


EMP.2000 POWER CIRCUIT

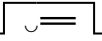


CONVEYOR TYPE DISHWASHER WITH DRYING TUNEL

H ELECTRIC CIRCUIT SCHEMA



EMP.2000 CONTROL CIRCUIT



CONVEYOR TYPE DISHWASHER WITH DRYING TUNEL

H ELECTRIC CIRCUIT SCHEMA

EMP.2000 ELECTRIC CIRCUIT SCHEMA EXPLANATION

P1	3 Graded Contactor
C1	Phase Collation Contactor 220V
C2	Lid Contactor 220V
C10	Burner 1 Resistance Contactor 220V
C11	Burner 2 Resistance Contactor 220V
C12	Burner 3 Resistance Contactor 220V
C14	Washing Resistance Contactor 220V
C7	Auxiliary Relay Contactor 220V
C5	Conveyor 1.Speed Contactor 220V
C6	Conveyor 2. Speed Contactor 220V
C4	Conveyor Bridging Contactor 220V
C13	Drying Resistance Contactor 220V
C9	Drying Fan Contactor 220V
C8	Rinsing Contactor 220V
C7	Washing Contactor 220V
S1	Magnetic Lid Sensor
S2	Magnetic Rinsing Sensor
S3	Magnetic Termination Sensor
T1	Burner Resistance Control Thermostat 1 (30-90°C)
T2	Burner Resistance Control Thermostat 2 (30-90°C)
T3	Washing Resistance Control Thermostat (30-90°C)
T4	Drying Resistance Control Thermostat (60-200°C)
PR1	Prosestat 1 (Pressure Switch)
PR2	Prosestat 2 (Pressure Switch)
L1	Start Signal Lamp 220V
L3	Ready Signal Lamp 220V
L2	Washing Signal Lamp 220V
L4	Error Signal Lamp 220V
V	Solenoid Valve 220V
FKR.10	Phase Collation Relay 220V
TR1	Conveyor 1 Motor Safety Relay (1,6 - 2,4 A)
TR2	Conveyor 2 Motor Safety Relay (1,6 - 2,4 A)
TR5	Drying Fan Motor Safety Relay (1,6 - 2,4 A)
TR4	Rinsing Motor Safety Relay (1,6 - 2,4 A)

CONVEYOR TYPE DISHWASHER WITH DRYING TUNEL

H ELECTRIC CIRCUIT SCHEMA

EMP.2000 ELECTRIC CIRCUIT SCHEMA EXPLANATION

TR3	Washing Motor Safety Relay (1,6 - 2,4 A)
RB1	Burner Resistance 1 (9000W 380V)
RB2	Burner Resistance 2 (9000W 380V)
RB3	Burner Resistance 3 (9000W 380V)
RK	Washing Resistance (9000W 380V)
RY	Drying Resistance (9000W 380V)
M1	Washing Motor Pump 0,55KW 2800 rpm 220V
M2	Washing Motor Pump 0,55KW 2800 rpm 220V
M3	Washing Motor Pump 0,55KW 2800 rpm 220V
M4	Double Speed Conveyor Motor 0,25-0,40 KW 1400-2800 rpm 380V
M5	Rinsing Pump 0,47KW 2800 rpm 220V
M6	Drying Fan Motor 0,55KW 2800 rpm 380V
M7	Cooler Fan 220V
F1	Burner Resistance 1 insurance 3x25 A.
F2	Burner Resistance 2 insurance 3x25 A.
F3	Burner Resistance 3 insurance 3x25 A.
F4	Drying Resistance insurance 3x25 A.
F5	Washing Resistance insurance 3x25 A.



BUREAU
VERITAS

Bureau Veritas Certification

UNOX S.P.A.

Via Majorana 22-35010 Cadoneghe (PD) - Italy

Certified sites are listed in the attachment to this certificate.

Bureau Veritas Italia S.p.A. certifies that the Management System of the above organisation has been audited and found to be in accordance with the requirements of the management system standards detailed below

ISO 9001:2015

Scope of certification

Design and development with test activities in internal laboratory, production and post-sales of equipment for transformation, cooking and conservation of foodstuffs. Weighing procedure for the declaration of the tested gross mass of the container (VGM) according to the "Method 2" provided by the amendments to Chapter VI Rule 2 of the SOLAS Convention 74 as amended.

IAF: 18

Original cycle start date:	23-January-2014
Expiry date of previous cycle:	22-January-2023
Certification / Recertification Audit date:	28-April-2022
Certification / Recertification cycle start date:	01-August-2022
Subject to the continued satisfactory operation of the organization's Management System, this certificate expires on:	01-August-2025
Certificate No.: IT316941	Version: 1 Issue Date: 01-August-2022

GIORGIO LANZAFAME - Local Technical Manager



SGQ N° 009A

Membro degli Accordi di Mutuo Riconoscimento EA, IAF e ILAC
Signatory of EA, IAF and ILAC mutual Recognition Agreements

Certification body address:

Bureau Veritas Italia S.p.A., Viale Monza, 347 - 20126 Milano, Italia

Further clarifications regarding the scope of this certificate and the applicability of the management system requirements may be obtained by consulting the organisation.

To check the validity of this certificate please double click or scan QR CODE





BUREAU
VERITAS

Bureau Veritas Certification

Attachment to certificate no. IT316941

UNOX S.P.A.

Via Majorana 22-35010 Cadoneghe (PD) - Italy

Bureau Veritas Italia S.p.A. certifies that the Management System of the above organisation has been audited and found to be in accordance with the requirements of the management system standards detailed below

ISO 9001:2015

Certified Sites

Site	Address	Scope
OPERATIVE SITE	Via Majorana 22-35010 Cadoneghe (PD) - Italy	Design and development with test activities in internal laboratory, production and post-sales of equipment for transformation, cooking and conservation of foodstuffs.
OPERATIVE UNIT	Via dell'Artigianato, 2,16/A - 16/B - 22 - 28/30-35010 VIGODARZERE (PD) - Italy	After-sales assistance for equipment for processing, cooking and preserving food. Weighing procedure for the declaration of the tested gross mass of the container (VGM) according to the "Method 2" provided by the amendments to Chapter VI Rule 2 of the SOLAS Convention 74 as amended.

Version: 1

Issue Date: 01-August-2022

GIORGIO LANZAFAME - Local Technical Manager



SGQ N° 009A

Membro degli Accordi di Mutuo Riconoscimento EA, IAF e ILAC
Signatory of EA, IAF and ILAC mutual Recognition Agreements

Certification body address:

Bureau Veritas Italia S.p.A., Viale Monza, 347 - 20126 Milano, Italia

Further clarifications regarding the scope of this certificate and the applicability of the management system requirements may be obtained by consulting the organisation.

To check the validity of this certificate please double click or scan QR CODE



CQS z.s.
Prosecká 412/74, 190 00 Praha 9 - Prosek
Czech Republic

CQS is the Certification Body No 3029 accredited according to Standard EN ISO/IEC 17021-1:2015 by the Czech Accreditation Institute for the Certification of Management Systems



CERTIFICATE

No.: CQS 2016/2021

CQS certifies that the Quality Management System of

retigo®

RETIGO s.r.o.

Láň 2310, 756 61 Rožnov pod Radhoštěm, Czech Republic

has been assessed and found to be in conformity with the requirements of

EN ISO 9001:2015

with respect to the following processes:

- **Development and production of equipment for gastronomy**

•••••

Expiry date: 20. 02. 2024
Certification decision: 21. 02. 2021
Date of issue: 21. 02. 2021
The first certification: 04. 03. 2009




Jana Olšanská
Managing Director



CQS Members*:

Elektrotechnický zkušební ústav, s.p., Fyzikálně technický zkušební ústav, s.p., Institut pro testování a certifikaci, a.s.,
Strojírenský zkušební ústav, s.p., Technický a zkušební ústav stavební Praha, s.p., Textilní zkušební ústav, s.p.

* A CQS member list valid at the time of issue of the certificate. Current list is available at www.cqs.cz.



CE DECLARATION OF CONFORMITY

PLACE AND DATE:

THE NETHERLANDS, MIJDRECHT, 1 FEBRUARY 2022

SELLER:

MAXIMA KITCHEN EQUIPMENT
SPANGENBERG INTERNATIONAL B.V.
NIJVERHEIDSWEG 19F
3641 RP MIJDRECHT
THE NETHERLANDS

WE,

DECLARE UNDER OUR SOLE RESPONSIBILITY, THAT THE FOLLOWING EQUIPMENT TO WHICH THIS CERTIFICATE RELATES, MEETS THE PRINCIPAL PROTECTION REQUIREMENTS AND IS IN CONFORMITY WITH THE RELEVANT SECTIONS OF THE APPLICABLE CE STANDARDS, MATERIAL GUIDELINES, MACHINE DIRECTIVES AND OTHER NORMATIVE DOCUMENTS. IF CHANGES ARE MADE TO THE PRODUCT THAT IS COVERED BY THIS CERTIFICATE OF CONFORMITY, THE CERTIFICATE OF CONFORMITY IS NO LONGER VALID.

VALIDITY:	TILL 1 FEBRUARY 2024
RANGE:	KITCHEN EQUIPMENT
BRAND:	MAXIMA
MODELS:	SEE ANNEX 1-A
STANDARDS:	EN ISO 12100:2010 + EN 60204-1:2006 + A1:2009
DIRECTIVES:	MD 2006/42/EC + LVD 2014/35/EU + EMC 2014/30/EU + GAS 2016/426/EU
MATERIALS:	WEEE 2012/19/EU + ROHS 2011/65/EU + REACH 1907/2006/EC
FOOD CONTACT:	1935/2004/EC + 282/2008/EC + 10/2011/EU

WE PROVIDE WARRANTY ON SPARE PARTS FOR THE PERIOD OF 1 YEAR AFTER DATE OF INVOICE. WEAR, TEAR AND MISUSE ARE EXCLUDED FROM WARRANTY. WE CONFIRM, THAT THE TECHNOLOGY OR SOFTWARE USED IN THE EQUIPMENT TO WHICH THIS CERTIFICATE RELATES, IS NOT OLDER THAN 3 YEARS. ALL EQUIPMENT IS INTENDED FOR INDUSTRIAL AND COMMERCIAL USE. ALL FOOD CONTACT MATERIALS ARE FOOD-GRADE AND COMPLY TO EUROPEAN REGULATIONS.

DATE:	12 JULY 2022
STAMP:	Spangenberg International B.V. Nijverheidsweg 19F 3641 RP Mijdrecht - The Netherlands Tel. +31 297 253 999 Fax. +31 297 256 445 www.maximaholland.com / info@spangenberg.nl
DEPARTMENT:	MANAGEMENT
NAME:	J.R. VERAAR
SIGNATURE:	



ANNEX 1-A

CE DECLARATION OF CONFORMITY

08410000	STICK BLENDER 280W-160MM
08410100	STICK BLENDER 450W-210MM
08410105	STICK BLENDER 450W-260MM
08410110	STICK BLENDER 650W-310MM
08410115	STICK BLENDER 650W-410MM
08410120	STICK BLENDER 850W-460MM
08410125	STICK BLENDER 850W-510MM
08560100	DIGITAL COMPACT COMBISTEAMER 6X 1/1GN
08560104	DIGITAL COMPACT COMBISTEAMER 6X 1/1GN (BLACK)
08560106	DIGITAL COMPACT COMBISTEAMER 6X 1/1GN (LHD) (BLACK)
08560150	DIGITAL COMPACT COMBISTEAMER 10X 1/1GN
08560152	DIGITAL COMPACT COMBISTEAMER 10X 1/1GN (BLACK)
08560154	DIGITAL COMPACT COMBISTEAMER 10X 1/1GN (LHD) (BLACK)
08560155	DIGITAL COMPACT COMBISTEAMER 10X 1/1GN (LHD)
08560200	DELUXE COMBISTEAMER 5X 2/3 GN
08560250	DIGITAL DELUXE COMBISTEAMER 5X 2/3 GN
08560350	DIGITAL DELUXE COMBISTEAMER 3X 1/1GN
08560450	DIGITAL DELUXE COMBISTEAMER 4X 1/1 GN
08560550	DIGITAL DELUXE COMBISTEAMER 7X 1/1 GN
08560551	DELUXE COMBISTEAMER 7X 1/1 GN
08560552	DIGITAL DELUXE COMBISTEAMER 7X 1/1 GN (BLACK)
08560553	DELUXE COMBISTEAMER 7X 1/1 GN (BLACK)
08560600	DELUXE COMBISTEAMER 11X 1/1 GN
08560601	DELUXE COMBISTEAMER 11X 1/1 GN (BLACK)
08560651	DIGITAL DELUXE COMBISTEAMER 11X 1/1GN (BLACK)
08560666	DIGITAL DELUXE COMBISTEAMER GAS 6X 60X40CM (BLACK)
08560681	TOUCH DELUXE COMBISTEAMER GAS 11X 1/1GN (BLACK)
08561001	DELUXE BAKERY STEAM OVEN 10X 60X40 (BLACK)

RU

08561026	DELUXE BAKERY CONVECTION OVEN 6X 60X40 (BLACK)
08561050	DIGITAL BAKERY STEAM OVEN 10X 60X40
08561051	DIGITAL BAKERY STEAM OVEN 10X 60X40 (BLACK)
08561056	DIGITAL DELUXE BAKERY STEAM OVEN GAS 10X 60X40 (BLACK)
08561106	DELUXE PROOFER 10 - 60*40 WHEELS (BLACK)
08563501	DIGITAL DELUXE BAKERY STEAM OVEN 6X 60X40 (BLACK)
08563510	DELUXE BAKERY STEAM OVEN 6X 60X40
08563511	DELUXE BAKERY STEAM OVEN 6X 60X40 (BLACK)
08800100	MAXIBLEND-HP BLENDER
08803000	EXTREME POWER BLENDER XL
08803200	COOKING BLENDER 1.2L
08804000	ESPRESSO MACHINE ELEGANCE - 1 GROUP
08804050	ESPRESSO MACHINE ELEGANCE - 2 GROUPS
08804100	ESPRESSO MACHINE ELEGANCE - 2 GROUPS GRANDE
08804150	ESPRESSO MACHINE ELEGANCE - 3 GROUPS GRANDE
08804500	COFFEE GRINDER 500 GR
08804501	COFFEE GRINDER 500 GR /W DOSER
08804525	COFFEE GRINDER 2000 GR /W DOSER
08804550	COFFEE GRINDER 2000 GR /W DOSER & SENSOR
08804560	COFFEE GRINDER 2000 GR DIGITAL ON DEMAND
08804580	COFFEE GRINDER 1000 GR /W DOSER & SENSOR 45DB
08804590	COFFEE GRINDER 1000 GR DIGITAL ON DEMAND 45DB
08900000	DOUBLE DOUGH ROLLER 32 (30CM)
08900005	DOUBLE DOUGH ROLLER 42 (40CM)
08900015	DOUBLE DOUGH ROLLER 42 (40CM) - T&G
08900020	SINGLE DOUGH ROLLER 32 (30CM)
08900021	SINGLE DOUGH ROLLER 32 (30CM) - FONDANT
08900025	SINGLE DOUGH ROLLER 50 (45CM)
08900028	SINGLE DOUGH ROLLER 50 (45CM) - FONDANT
09200775	DISHWASHER VN3000 ULTRA 400V
09200800	DISHWASHER VN400 ULTRA 230V
09200805	DISHWASHER VN400 230V
09200990	GLASSWASHER VNG350 230V
09200995	GLASSWASHER VNG350 ULTRA 230V
09201000	DISHWASHER VN500 230V
09201002	DISHWASHER VN500 400V

RJ

09201005	DISHWASHER VN500 ULTRA 230V
09201010	DISHWASHER VN500 ULTRA 400V
09201020	DISHWASHER VN2000 3P ULTRA 400V
09201029	VN2000 OUTLET TABLE (L) 70X75 + SHELF
09201030	VN2000 OUTLET TABLE (R) 120X75 + SHELF
09201031	VN2000 INLET TABLE (R) 120X75 / 1 SINK + SHELF
09201032	VN2000 OUTLET TABLE (R) 70X75 + SHELF
09201033	VN2000 INLET TABLE (L) 120X75 / 1 SINK
09201034	VN2000 INLET TABLE (L) 120X75 / 1 SINK + SHELF
09201035	VN2000 INLET TABLE (L) 160X75 / 1 SINK + SHELF
09201036	VN2000 OUTLET TABLE (L) 90X75 + SHELF
09201037	VN2000 OUTLET TABLE (L) 120X75 + SHELF
09201038	VN2000 OUTLET TABLE (R) 90X75 + SHELF
09201039	VN2000 INLET TABLE (L) 140X75 / 1 SINK + SHELF
09201040	VN2000 INLET TABLE (R) 140X75 / 1 SINK + SHELF
09201041	VN2000 INLET TABLE (R) 160X75 / 1 SINK + SHELF
09201042	VN2000 INLET TABLE (R) 190X75 / 1 SINK + SHELF
09201043	VN2000 INLET TABLE (R) 90X75 / 1 SINK
09201055	VN2000 PLATE SCRAPING TABLE 140X60
09300001	ELECTRIC CHAFING DISH
09300004	BAIN MARIE /W TAP
09300009	BAIN MARIE /W TAP 1X1/1 GN
09300010	BAIN MARIE /W TAP 2X1/2 GN
09300011	BAIN MARIE /W TAP 3X1/3 GN
09300027	CITRUS JUICER SILVER 32LH
09300028	ELECTRIC CITRUS JUICER XL
09300029	ELECTRIC CITRUS JUICER XL AUTO
09300030	AUTOMATIC JUICER MAJ25
09300031	SELF-SERVE JUICER MAJ25
09300032	SELF-SERVE JUICER MAJ45
09300036	SELF-SERVE JUICER MAJ60
09300045	TOASTER MT-4
09300050	TOASTER MT-6
09300055	CONVEYOR TOASTER MTT150
09300056	CONVEYOR TOASTER MTT300
09300057	CONVEYOR TOASTER MTT450

R

09300058	DELUXE SALAMANDER GRILL 3.6KW
09300059	DELUXE SALAMANDER GRILL 2.2KW
09300061	DELUXE SALAMANDER GRILL WITH LIFT 2.8KW
09300062	DELUXE SALAMANDER GRILL WITH LIFT 3.6KW
09300063	DELUXE SALAMANDER GRILL WITH LIFT 5.6KW
09300065	ELECTRIC GRIDDLE/GRILL 550 SMOOTH
09300070	ELECTRIC GRIDDLE/GRILL 550 GROOVED
09300072	ELECTRIC GRIDDLE/GRILL 550 1/2 GROOVED
09300075	ELECTRIC GRIDDLE/GRILL 730 SMOOTH
09300080	ELECTRIC GRIDDLE/GRILL 730 1/2 GROOVED
09300083	CUTTER DELUXE 6L
09300084	CUTTER DELUXE 9L
09300121	ICE MAKER M-ICE 15B
09300122	ICE MAKER M-ICE 24
09300123	ICE MAKER M-ICE 24W
09300126	ICE MAKER M-ICE 28
09300127	ICE MAKER M-ICE 45W
09300128	ICE MAKER M-ICE 100
09300129	ICE MAKER M-ICE 45
09300131	ICE MAKER M-ICE 60
09300132	ICE MAKER M-ICE 80
09300136	CRUSHED ICE MAKER 30 FLAKE
09300137	CRUSHED ICE MAKER 50 FLAKE
09300138	CRUSHED ICE MAKER 85 FLAKE
09300139	CRUSHED ICE MAKER 130 FLAKE
09300140	CRUSHED ICE MAKER 250 FLAKE W
09300141	CRUSHED ICE MAKER 400 FLAKE
09300145	JUICE EXTRACTOR MJ-5000
09300146	CRUSHED ICE MAKER 30 FLAKE W
09300147	CRUSHED ICE MAKER 50 FLAKE W
09300148	CRUSHED ICE MAKER 85 FLAKE W
09300151	PLANETARY MIXER MPM 7 PINK
09300152	PLANETARY MIXER MPM 7 BLUE
09300153	PLANETARY MIXER MPM 7 GREEN
09300154	PLANETARY MIXER MPM 7 WHITE
09300160	PLANETARY MIXER MPM 10

R

09300165	PLANETARY MIXER MPM 20
09300170	PLANETARY MIXER MPM 30
09300175	PLANETARY MIXER MPM 40
09300180	PLANETARY MIXER MPM 60
09300202	PREMIUM KNIFE SHARPENER 360
09300216	VACUUM PACKING MACHINE 200
09300220	VACUUM PACKING MACHINE 300
09300225	VACUUM PACKING MACHINE 400
09300227	VACUUM PACKING MACHINE 450
09300228	VACUUM PACKING MACHINE 600 - DUAL CHAMBER
09300229	VACUUM PACKING MACHINE 700
09300230	VACUUM PACKING MACHINE 500
09300235	VEGETABLE CUTTER VC450
09300410	ELECTRIC FRYER WITH HANDLE 1X4L
09300411	ELECTRIC FRYER WITH HANDLE 2X4L
09300415	FRYER 1 X 8L /W TAP
09300416	FRYER 2 X 8L /W TAP
09300417	MCO OVEN WITH GRILL 230V
09300418	MCO OVEN /W STEAM + GRILL 230V
09300419	MCO 60X40 STEAM 400V
09300420	MCO OVEN 230V
09300430	CONTACT GRILL SINGLE - GROOVED
09300435	CONTACT GRILL DOUBLE - GROOVED
09300436	CONTACT GRILL PANINI - GROOVED
09300437	CONTACT GRILL DOUBLE - SMOOTH
09300440	MANUAL MEAT MIXER 10L
09300441	MANUAL MEAT MIXER 20L
09300442	MANUAL MEAT MIXER 30L
09300445	ELECTRIC MEAT MINCER 12
09300450	ELECTRIC MEAT MINCER 22
09300455	ELECTRIC MEAT MINCER 32
09300457	AUTOMATIC SAUSAGE FILLER 15L
09300458	AUTOMATIC SAUSAGE FILLER 20L
09300459	AUTOMATIC SAUSAGE FILLER 25L
09300460	MANUAL SAUSAGE FILLER 3L
09300461	MANUAL SAUSAGE FILLER 5L

RV

09300462	MANUAL SAUSAGE FILLER 7L	
09300463	MANUAL SAUSAGE FILLER 10L	
09300464	MANUAL SAUSAGE FILLER 12L	
09300465	MANUAL SAUSAGE FILLER 15L	
09300467	MANUAL SAUSAGE FILLER 3L - HORIZONTAL	
09300468	MANUAL SAUSAGE FILLER 5L - HORIZONTAL	
09300469	MANUAL SAUSAGE FILLER 7L - HORIZONTAL	
09300470	POTATO PEELER 8KG	
09300475	POTATO PEELER 15KG	
09300480	POTATO PEELER 30KG	
09300485	POTATO PEELER DELUXE 15KG	
09300486	POTATO PEELER DELUXE 20KG	
09300490	MEAT SLICER 220 MM	
09300495	MEAT SLICER 250 MM	
09300500	MEAT SLICER 300 MM	
09300510	TOMATO SLICER 4MM	
09300512	SLUSH MACHINE DELUXE 1X12L	
09300513	SLUSH MACHINE DELUXE 2X12L	
09300514	SLUSH MACHINE DELUXE 3X12L	
09300520	SLUSH MACHINE 2X15L	
09300525	SLUSH MACHINE 3X15L	
09300530	REFRIGERATED DRINK DISPENSER 1X18L	
09300535	REFRIGERATED DRINK DISPENSER 2X18L	
09300540	REFRIGERATED DRINK DISPENSER 3X18L	
09300541	DRINK DISPENSER 1X8L	
09300542	DRINK DISPENSER 2X8L	
09300543	DRINK DISPENSER 3X8L	
09300544	CLEANING TROLLEY	
09300545	DINING CART 2 LEVELS	
09300546	DINING CART 3 LEVELS	
09300547	TRAY TROLLEY 16 X 1/1GN	
09300548	TRAY TROLLEY 16 X 60X40	
09300549	TRAY TROLLEY DOUBLE 2X16 X 60X40	
09300559	CREPES PLATE 1	
09300560	CREPES PLATE 2	
09300575	SOUP KETTLE 10	

RU

09300580	HOT DOG COOKER 1
09300585	HOT DOG COOKER 2
09300590	HAMBURGER PRESS 100
09300591	HAMBURGER PRESS 130
09300595	HOT WATER BOILER 10L
09300596	HOT WATER BOILER 20L
09300598	COFFEE PERCOLATOR 10L
09300599	COFFEE PERCOLATOR 15L
09300780	MACHINE TABLE 600X600X600MM
09300785	MACHINE TABLE 600X800X600MM
09300950	WT SQ 60X60
09300953	WT SQ 60X80
09300956	WT SQ 60X100
09300959	WT SQ 60X120
09300962	WT SQ 60X140
09300965	WT SQ 60X160
09300968	WT SQ 60X180
09300971	WT SQ 60X200
09300974	WTB SQ 60X60
09300977	WTB SQ 60X80
09300980	WTB SQ 60X100
09300983	WTB SQ 60X120
09300986	WTB SQ 60X140
09300989	WTB SQ 60X160
09300992	WTB SQ 60X180
09300995	WTB SQ 60X200
09359980	AUTOMATIC JUICER MAJ25E
09360000	DELUXE AUTOMATIC JUICER MAJ26X
09360020	DELUXE SELF SERVICE JUICER MAJ50X
09360040	DELUXE SELF SERVICE JUICER MAJ80X
09360750	PLANETARY MIXER MPM 7 BLACK
09360755	PLANETARY MIXER MPM 7 SILVER
09360760	PLANETARY MIXER MPM 7 RED
09360765	PLANETARY MIXER MPM 7 GOLD
09361008	SPIRAL MIXER MSM 8
09361010	SPIRAL MIXER MSM 10

RV

09361020	SPIRAL MIXER MSM 20 - 2 SPEEDS
09361030	SPIRAL MIXER MSM 30 - 2 SPEEDS
09361050	SPIRAL MIXER MSM 50 - 2 SPEEDS
09361060	SPIRAL MIXER MSM 60 - 2 SPEEDS
09361080	SPIRAL MIXER MSM 75 - 2 SPEEDS
09361100	SPIRAL MIXER MSM 100 - 2 SPEEDS
09361130	SPIRAL MIXER MSM 130 - 2 SPEEDS
09361150	SPIRAL MIXER MSM 200 - 2 SPEEDS
09362000	PLATE WARMER 40
09362005	PLATE WARMER 2X40
09362010	PLATE WARMER CABINET 30
09362015	PLATE WARMER CABINET 60
09362020	PLATE WARMER CABINET 120
09362030	CUP WARMER 72
09362040	HEATING LAMP SINGLE
09362041	HEATING LAMP DOUBLE
09362042	HEATING LAMP TRIPLE
09362101	DRINK MIXER SINGLE
09362102	DRINK MIXER DOUBLE
09362150	COMPACT PIZZA OVEN 1X40
09362155	COMPACT PIZZA OVEN 2X40
09362200	ELECTRIC BONE SAW 1650 MM
09362205	ELECTRIC BONE SAW 2040 MM
09362220	SAUSAGE CLIPPING MACHINE
09362250	MCO 60X40 STEAM 230V
09364000	WT SQ 70X60
09364003	WT SQ 70X80
09364006	WT SQ 70X100
09364009	WT SQ 70X120
09364012	WT SQ 70X140
09364015	WT SQ 70X160
09364018	WT SQ 70X180
09364021	WT SQ 70X200
09364024	WTB SQ 70X60
09364027	WTB SQ 70X80
09364030	WTB SQ 70X100

RV


09364033	WTB SQ 70X120	
09364036	WTB SQ 70X140	
09364039	WTB SQ 70X160	
09364042	WTB SQ 70X180	
09364045	WTB SQ 70X200	
09364950	ELECTRIC FRYER 1X6L - ECO	
09364951	ELECTRIC FRYER 2X6L - ECO	
09365010	ELECTRIC FRYER WITH TAP 1X16L	
09365011	ELECTRIC FRYER WITH TAP 2X16L	
09365020	ELECTRIC FRYER WITH TAP 1X20L	
09365021	ELECTRIC FRYER WITH TAP 1X30L	
09365100	WAFFLE MAKER HEART SINGLE	
09365101	WAFFLE MAKER HEART DOUBLE	
09365105	WAFFLE MAKER CLASSIC - SINGLE	
09365106	WAFFLE MAKER CLASSIC - DOUBLE	
09365107	WAFFLE MAKER BRUSSELS 5X3	
09365120	BUBBLE WAFFLE MAKER	
09365125	LOLLIPOP WAFFLE MAKER	
09365135	CONE MAKER SINGLE	
09365136	CONE MAKER DOUBLE	
09365140	WAFFLE MAKER CORN & HOT DOG	
09365141	WAFFLE MAKER HOT DOG	
09365150	ELECTRIC DONUT MAKER 5	
09365151	ELECTRIC DONUT MAKER 6	
09365152	ELECTRIC DONUT MAKER 12	
09365155	ELECTRIC FRYER WITH CABINET & TAP 1X16L	
09365156	ELECTRIC FRYER WITH CABINET & TAP 2X16L	
09365159	ELECTRIC GRIDDLE/GRILL 360 SMOOTH	
09365160	ELECTRIC GRIDDLE/GRILL 360 1/2 GROOVED	
09365161	ELECTRIC GRIDDLE/GRILL 360 GROOVED	
09365162	ELECTRIC GRIDDLE/GRILL 360 SMOOTH - CHROME	
09365163	ELECTRIC GRIDDLE/GRILL 550 SMOOTH - CHROME	
09365164	ELECTRIC GRIDDLE/GRILL 730 SMOOTH - CHROME	
09365210	ELECTRIC FRYER 1X15L - ECO	
09365211	ELECTRIC FRYER 1X4L	RJ
09365212	ELECTRIC FRYER 2X4L	

09365213	ELECTRIC FRYER 1X6L
09365214	ELECTRIC FRYER 2X6L
09365215	ELECTRIC FRYER 1X8L
09365225	ELECTRIC FRYER 2X8L
09365226	ELECTRIC FRYER 1X11L
09365227	ELECTRIC FRYER 2X11L
09365228	ELECTRIC FRYER WITH TAP 1X10L
09365229	ELECTRIC FRYER WITH TAP 2X10L
09365230	ELECTRIC FRYER WITH TAP 1X13L
09365231	ELECTRIC FRYER WITH TAP 2X13L
09365232	ELECTRIC FRYER WITH CABINET & TAP 1X30L
09365233	ELECTRIC FRYER WITH CABINET & TAP 1X35L
09365234	ELECTRIC FRYER WITH CABINET & TAP 1X45L
09366000	JUICE EXTRACTOR MJ2000
09367000	MICROWAVE SS 25L 900W MANUAL
09367010	MICROWAVE SS 25L 1000W DIGITAL
09367020	MICROWAVE SS 30L 1800W DIGITAL DP
09368000	MANUAL MEAT MIXER 30L - DOUBLE AXLE
09368001	MANUAL MEAT MIXER 40L - DOUBLE AXLE
09368002	MANUAL MEAT MIXER 50L - DOUBLE AXLE
09368003	MANUAL MEAT MIXER 60L - DOUBLE AXLE
09368010	MANUAL MEAT MIXER 10L - TILTING BOWL
09368011	MANUAL MEAT MIXER 20L - TILTING BOWL
09368012	MANUAL MEAT MIXER 30L - TILTING BOWL
09368013	MANUAL MEAT MIXER 40L - TILTING BOWL
09368014	MANUAL MEAT MIXER 50L - TILTING BOWL
09368015	MANUAL MEAT MIXER 60L - TILTING BOWL
09368050	MANUAL SAUSAGE FILLER 3L - CHURROS
09368051	MANUAL SAUSAGE FILLER 5L - CHURROS
09368052	MANUAL SAUSAGE FILLER 7L - CHURROS
09368053	MANUAL SAUSAGE FILLER 10L - CHURROS
09368054	MANUAL SAUSAGE FILLER 12L - CHURROS
09368055	MANUAL SAUSAGE FILLER 15L - CHURROS
09368100	MANUAL MEAT TENDERIZER 27 - 125MM
09368105	MANUAL MEAT TENDERIZER 37 - 175MM
09369000	MANUAL TRAY SEALER 250X180

RV

09369001	MANUAL TRAY SEALER 270X220
09369002	MANUAL TRAY SEALER 325X265
09370000	DELUXE PIZZA OVEN 400V - 4 X 25 CM
09370010	DELUXE PIZZA OVEN 400V - 4 + 4 X 25 CM
09370020	DELUXE PIZZA OVEN 400V - 4 X 30 CM
09370030	DELUXE PIZZA OVEN 400V - 4 + 4 X 30 CM
09370040	DELUXE PIZZA OVEN 400V - 6 X 30 CM
09370050	DELUXE PIZZA OVEN 400V - 6 + 6 X 30 CM
09370060	DELUXE PIZZA OVEN 4 X 25 CM TABLE
09370070	DELUXE PIZZA OVEN 4 + 4 X 25 CM TABLE
09370080	DELUXE PIZZA OVEN 4 X 30 CM TABLE
09370090	DELUXE PIZZA OVEN 4 + 4 X 30 CM TABLE
09370100	DELUXE PIZZA OVEN 6 X 30 CM TABLE
09370110	DELUXE PIZZA OVEN 6 + 6 X 30 CM TABLE
09370175	DONER KEBAB SLICER
09370200	PREMIUM DONER GRILL 1 BURNER - BM - GAS
09370205	PREMIUM DONER GRILL 2 BURNERS - BM - GAS
09370210	PREMIUM DONER GRILL 3 BURNERS - BM - GAS
09370215	PREMIUM DONER GRILL 4 BURNERS - BM - GAS
09370220	PREMIUM DONER GRILL 5 BURNERS - BM - GAS
09370225	PREMIUM DONER GRILL 3 BURNERS - TM - GAS
09370230	PREMIUM DONER GRILL 4 BURNERS - TM - GAS
09370235	PREMIUM DONER GRILL 5 BURNERS - TM - GAS
09370240	PREMIUM DONER GRILL 2 BURNERS - BM - ELECTRIC
09370245	PREMIUM DONER GRILL 3 BURNERS - BM - ELECTRIC
09370250	PREMIUM DONER GRILL 4 BURNERS - BM - ELECTRIC
09370255	PREMIUM DONER GRILL 5 BURNERS - BM - ELECTRIC
09370260	PREMIUM DONER GRILL 2 BURNERS - TM - ELECTRIC
09370265	PREMIUM DONER GRILL 3 BURNERS - TM - ELECTRIC
09370270	PREMIUM DONER GRILL 4 BURNERS - TM - ELECTRIC
09370275	PREMIUM DONER GRILL 5 BURNERS - TM - ELECTRIC
09371000	SINGLE ECO INDUCTION PLATE 2000W
09371010	INDUCTION PLATE 5000W
09371011	INDUCTION STOVE - 4 BURNERS
09371012	INDUCTION STOVE - 2 BURNER
09371030	INDUCTION PLATE (40CM) 3500W

09371040	INDUCTION PLATE 3500W	
09371050	INDUCTION WOK 3500W	
09371070	INDUCTION PLATE 2700W	
09371080	INDUCTION WARM PLATE 61,5X36	
09371090	INDUCTION 8L FRYER TOUCH 3,5KW	
09371095	INDUCTION 2X8L FRYER TOUCH 3500W	
09374000	AUTOMATIC DONUT MAKER	
09374010	ELECTRIC MINI DONUT MAKER 6	
09374011	ELECTRIC MINI DONUT MAKER 12	
09374012	ELECTRIC MINI DONUT MAKER 15	
09374020	ELECTRIC HOT POT 1	
09374021	ELECTRIC HOT POT 4	
09374022	ELECTRIC HOT POT 2	
09374030	ELECTRIC CHIMNEY CAKE OVEN (CONTAINS 2 PARTS)	
09374032	ELECTRIC CHIMNEY CAKE GRILL	
09374043	CHIMNEY CAKE STAND - HORIZONTAL	
09374044	CHIMNEY CAKE STAND - VERTICAL	
09374050	ELECTRIC CHOCOLATE MELTING MACHINE 2	
09374051	ELECTRIC CHOCOLATE MELTING MACHINE 3	
09374052	ELECTRIC CHOCOLATE MELTING MACHINE 4	
09374053	ELECTRIC CHOCOLATE MELTING MACHINE 6	
09374055	ELECTRIC CHOCOLATE TEMPERING MACHINE	
09374060	MANUAL CHURROS FILLING MACHINE	
09374061	ELECTRIC CHURROS MACHINE COMPLETE	
09374070	ELECTRIC CREPE PLATE 1	
09374071	ELECTRIC CREPE PLATE 2	
09374100	ELECTRIC WARM SAUCE DISPENSER 1	
09374101	ELECTRIC WARM SAUCE DISPENSER 2	
09374102	ELECTRIC WARM SAUCE DISPENSER 3	
09374110	ELECTRIC SAUCE WARMER 1	
09374111	ELECTRIC SAUCE WARMER 2	
09374112	ELECTRIC SAUCE WARMER 3	
09374119	SAUCE WARMER BOTTLE (ALL MODELS)	
09374120	ELECTRIC PANCAKE MAKER 1	
09374121	ELECTRIC PANCAKE MAKER 4	RJ
09374122	ELECTRIC PANCAKE MAKER 9	

09374125	ELECTRIC PANCAKE PLATE 9	
09374130	ELECTRIC MINI PANCAKE PLATE 25	
09374131	ELECTRIC MINI PANCAKE PLATE 50	
09374132	ELECTRIC MINI PANCAKE PLATE 100	
09374140	ELECTRIC PASTA / NOODLE COOKER 2	
09374141	ELECTRIC PASTA / NOODLE COOKER 4	
09374150	ELECTRIC CONVEYOR PIZZA OVEN	
09374160	STAINLESS STEEL BATTER DISPENSER / HOPPER BASIC	
09374161	STAINLESS STEEL BATTER DISPENSER / HOPPER DELUXE	
09374170	ELECTRIC TOSTI / TOASTI MAKER 4	
09374180	DIGITAL TURNABLE WAFFLE MAKER - BELGIAN 2	
09374181	DIGITAL TURNABLE WAFFLE MAKER - BELGIAN 4	
09374182	DIGITAL TURNABLE WAFFLE MAKER - TAIYAKI/TOKYAKU 5	
09374190	ELECTRIC TURNABLE WAFFLE MAKER - SMILEY HEARTSHAPE	
09374191	ELECTRIC TURNABLE WAFFLE MAKER - LOLLY STICK BALL 6	
09374192	ELECTRIC TURNABLE WAFFLE MAKER - SMILEY	
09374193	ELECTRIC TURNABLE WAFFLE MAKER - STICK 13	
09374200	ELECTRIC WAFFLE MAKER - BELGIAN 2	
09374201	ELECTRIC WAFFLE MAKER - BELGIAN 3	
09374202	ELECTRIC WAFFLE MAKER - BELGIAN 4	
09374203	ELECTRIC WAFFLE MAKER - BELGIAN 10	
09374204	ELECTRIC WAFFLE MAKER - BELGIAN CIRCLE 4	
09374205	ELECTRIC WAFFLE MAKER - PENIS 4	
09374206	ELECTRIC TURNABLE WAFFLE MAKER - VAGINA 3	
09374210	ELECTRIC WAFFLE MAKER - BUBBLE	
09374215	ELECTRIC WAFFLE MAKER - BUTTERFLY 4	
09374220	ELECTRIC WAFFLE MAKER - CHURROS 5	
09374221	ELECTRIC WAFFLE MAKER - CHURROS 7	
09374222	ELECTRIC WAFFLE MAKER - CHURROS 10	
09374225	ELECTRIC WAFFLE MAKER - GELATO PANINI 1	
09374226	ELECTRIC WAFFLE MAKER - GELATO PANINI 2	
09374230	ELECTRIC WAFFLE MAKER - HEART 4	
09374235	ELECTRIC WAFFLE MAKER - HONEYCOMB	
09374240	ELECTRIC WAFFLE MAKER - HOT DOG & CORN DOG	
09374241	ELECTRIC WAFFLE MAKER - HOT DOG SMOOTH	
09374242	ELECTRIC WAFFLE MAKER - HOT DOG STRIPED	

09374245	ELECTRIC WAFFLE MAKER - ICE CREAM CONE 1
09374246	ELECTRIC WAFFLE MAKER - ICE CREAM CONE 2
09374250	ELECTRIC WAFFLE MAKER - LOLLY STICK BELGIAN 6
09374251	ELECTRIC WAFFLE MAKER - LOLLY STICK TRIANGLE 4
09374255	ELECTRIC WAFFLE MAKER - STROOPWAFEL
09374300	ELECTRIC MODULAR TARTLET MACHINE
09376000	DISINFECTION DISPENSER AUTOMATIC
09376005	DISINFECTION STAND COMPLETE BLACK
09376010	DISINFECTION STAND COMPLETE SILVER
09376050	DELUXE DISINFECTION STAND BASIC
09376060	DELUXE DISINFECTION STAND PRO
09377000	TABLE TOP DOUGH SHEETER 380
09377005	TABLE TOP DOUGH SHEETER 520
09377010	FLOOR MODEL DOUGH SHEETER 380
09377015	FLOOR MODEL DOUGH SHEETER 520
09378000	PREMIUM KAMADO BBQ 13 INCH (33CM)
09378005	PREMIUM KAMADO BBQ 16 INCH (41CM)
09378010	PREMIUM KAMADO BBQ 18 INCH (46CM)
09378015	PREMIUM KAMADO BBQ 22 INCH (56CM)
09378025	PREMIUM KAMADO BBQ 26 INCH (66CM)
09378030	CERAMIC PIZZA OVEN 21 INCH (53CM)
09379000	KITCHEN MASTER ULTIMATE
09391500	600 ELECTRIC UNDERNEATH OVEN 60X60
09391510	600 GAS COOKER 2 BURNERS 40X60
09391520	600 GAS COOKER 4 BURNERS 60X60
09391530	600 ELECTRIC COOKER 4 BURNERS 60X60
09391540	600 ELECTRIC COOKER 4 BURNERS WITH OVEN 60X60
09391550	600 ELECTRIC COOKER 2 BURNERS 40X60
09391560	600 GAS WOK COOKER 40X60
09391570	600 GAS CHARGRILL 60X60
09391580	600 GAS GRILL PLATE SM 40X60
09391590	600 GAS GRILL PLATE GR 40X60
09391600	600 GAS GRILL PLATE SM 60X60
09391610	600 ELECTRIC GRILL PLATE SM 40X60
09391620	600 ELECTRIC GRILL PLATE GR 40X60
09391630	600 ELECTRIC GRILL PLATE SM 60X60

R

09391640	600 ELECTRIC FRYER 1X10L 40X60
09391650	600 ELECTRIC FRYER 2X10L 60X60
09391660	600 ELECTRIC PASTA COOKER 15L 40X60
09391670	600 ELECTRIC CHIPS UNIT 40X60
09391680	600 ELECTRIC BAIN MARIE 1/1 GN 40X60
09391690	600 COUNTERTOP SINGLE 40X60
09391700	600 COUNTERTOP DOUBLE 60X60
09391950	600 CUPBOARD 40X60
09391955	600 CUPBOARD 60X60
09393900	SINK 120X60 / 1 BOWL (M) / 2 DRAINER (L&R)
09393950	SINK 60X70 / 1 BOWL (M) + SHELF
09393955	SINK 160X60 / 1 BOWL (M) / 2 DRAINER (L&R) + SHELF
09393959	SINK 140X70 / 1 BOWL (M) / 2 DRAINER (L&R) + SHELF
09393960	SINK 160X70 / 1 BOWL (M) / 2 DRAINER (L&R) + SHELF
09393980	SINK 100X70 / 1 BOWL (R) / 1 DRAINER (L) + SHELF
09394000	SINK 120X60 / 1 BOWL (M) / 2 DRAINER (L&R) + SHELF
09394001	SINK 160X60 / 2 BOWL (M) / 2 DRAINER (L&R) + SHELF
09394002	SINK DW 160X60 / 2 BOWL (R) / 1 DRAINER (L)
09394003	SINK DW 200X70 / 2 BOWL (L) / 1 DRAINER (R)
09394005	SINK 80X70 / 1 BOWL (M) + SHELF
09394035	SINK 140X60 / 1 BOWL (L) / 1 DRAINER (R) + SHELF
09394050	SINK 140X60 / 1 BOWL (R) / 1 DRAINER (L) + SHELF
09394065	SINK 140X60 / 2 BOWL (R) / 1 DRAINER (L) + SHELF
09394085	SINK 150X70 / 2 BOWL (R) / 1 DRAINER (L) + SHELF
09394090	SINK 190X70 / 2 BOWL (M) / 2 DRAINER (L&R) + SHELF
09394091	SINK 210X70 / 2 BOWL (M) / 2 DRAINER (L&R) + SHELF
09394100	SINK 160X60 / 2 BOWL (M) / 2 DRAINER (L&R)
09394150	SINK DW 140X70 / 1 BOWL (L) / 1 DRAINER (R)
09394175	WORKING BENCH 120X70 - 4 DRAWERS / 2 SHELVES
09394176	WORK BENCH 90X70 - 2 SHELVES
09394200	WALL SHELF 120X30CM
09394201	WALL SHELF 160X30CM
09394997	700 ELECTRIC COOKER WITH OVEN 80X70 - 4 BURNERS
09394998	700 ELECTRIC COOKER DOUBLE 80X70 - 4 BURNERS
09394999	700 ELECTRIC FRYER DOUBLE 80X70 - 2X12L
09395000	700 ELECTRIC FRYER SINGLE 40X70 - 1X12L

RJ

09395001	700 ELECTRIC COOKER SINGLE 40X70 - 2 BURNERS	
09395002	700 GAS FRYER SINGLE 40X70 - 1X12L	
09395003	700 GAS FRYER DOUBLE 80X70 - 2X12L	
09395005	700 GAS BAIN MARIE SINGLE 40X70	
09395006	700 GAS BAIN MARIE DOUBLE 80X70	
09395015	700 GAS GRILL SINGLE GROOVED 40X70	
09395016	700 GAS GRILL SINGLE SMOOTH 40X70	
09395017	700 GAS GRILL DOUBLE SMOOTH 80X70	
09395047	700 ELECTRIC GRILL SINGLE GROOVED 40X70	
09395048	700 ELECTRIC GRILL SINGLE GROOVED 40X70 - CHROME	
09395049	700 ELECTRIC GRILL DOUBLE 1/2 GR 80X70 - CHROME	
09395050	700 ELECTRIC GRILL DOUBLE SMOOTH 80X70 - CHROME	
09395051	700 ELECTRIC GRILL DOUBLE SMOOTH 80X70	
09395052	700 ELECTRIC GRILL SINGLE SMOOTH 40X70	
09395053	700 ELECTRIC GRILL DOUBLE 1/2 GR 80X70	
09395054	700 ELECTRIC GRILL DOUBLE GROOVED 80X70	
09395055	700 ELECTRIC GRILL DOUBLE GROOVED 80X70 - CHROME	
09395990	700 GAS GRILL DOUBLE 1/2 GR 80X70	
09395998	700 GAS GRILL SINGLE SMOOTH 40X70 - CHROME	
09395999	700 GAS GRILL DOUBLE SMOOTH 80X70 - CHROME	
09396000	700 GAS GRILL DOUBLE 1/2 GR 80X70 - CHROME	
09396001	700 GAS COOKER SINGLE 40X70 - 2 BURNERS (12KW)	
09396002	700 GAS COOKER WITH GAS OVEN 80X70 - 4 BURNERS (31KW)	
09396003	700 GAS COOKER DOUBLE 80X70 - 4 BURNERS (24KW)	
09396004	700 GAS WOK SINGLE 40X70 - 1 BURNER	
09396005	700 GAS COOKER WITH ELECTRIC OVEN 80X70 - 4B (30KW)	
09396006	700 GAS WOK DOUBLE 80X70 - 2 BURNERS	
09396007	700 ELECTRIC GRILL SINGLE SMOOTH 40X70 - CHROME	
09396008	700 GAS GRILL SINGLE GROOVED 40X70 - CHROME	
09396009	700 GAS COOKER WITH GAS OVEN 80X70 - 4 BURNERS (34KW)	
09396010	700 GAS GRILL DOUBLE GROOVED 80X70	
09396011	700 GAS GRILL DOUBLE GROOVED 80X70 - CHROME	
09396012	700 GAS TILTING BRATT PAN 50L 80X70	
09396013	700 GAS COOKER WITH GAS OVEN 80X70 - 4 BURNERS (37KW)	
09396014	700 GAS COOKER WITH ELECTRIC OVEN 80X70 - 4B (33KW)	R
09396015	700 GAS COOKER WITH ELECTRIC OVEN 80X70 - 4B (36KW)	

09396016	700 GAS COOKER SINGLE 40X70 - 2 BURNERS (13.5KW)
09396017	700 GAS COOKER SINGLE 40X70 - 2 BURNERS (15KW)
09396018	700 GAS COOKER DOUBLE 80X70 - 4 BURNERS (27KW)
09396019	700 GAS COOKER DOUBLE 80X70 - 4 BURNERS (30KW)
09397000	700 BASE CUPBOARD SINGLE 40X70 - WITH DOOR
09397001	700 BASE CUPBOARD DOUBLE 80X70 - WITH DOOR
09397002	700 BASE CUPBOARD SINGLE 40X70 - OPEN
09397003	700 BASE CUPBOARD DOUBLE 80X70 - OPEN
09397050	700 COUNTERTOP SINGLE 40X70
09397055	700 COUNTERTOP DOUBLE 80X70
09397990	700 GAS LAVASTONE GRILL SINGLE 40X70
09398000	700 GAS LAVASTONE GRILL DOUBLE 80X70
09398005	700 GAS CHARGRILL DOUBLE 80X70
09398050	700 GAS BOILING PAN 60L 80X70 - INDIRECT
09398060	700 GAS BOILING PAN 60L 80X70 - DIRECT
09398100	700 ELECTRIC PASTA COOKER 40X70
09398130	700 ELECTRIC BAIN MARIE SINGLE 40X70
09398135	700 ELECTRIC BAIN MARIE DOUBLE 80X70
09398140	700 ELECTRIC BOILING PAN 60L 80X70 - INDIRECT
09398145	700 ELECTRIC TILTING BRATT PAN 50L 80X70
09398150	700 ELECTRIC CHIPS UNIT SINGLE 40X70
09398200	700 INDUCTION COOKER SINGLE 40X70 - 1 PLATE
09398201	700 INDUCTION COOKER DOUBLE 80X70 - 2 PLATE
09398205	700 INFRARED COOKER SINGLE 40X70 - 1 PLATE
09398206	700 INFRARED COOKER DOUBLE 80X70 - 2 PLATE
09398300	700 GAS COOKER SOLID TOP 80X70
09398500	900 GAS COOKER WITH GAS OVEN 80X90 (40KW)
09398501	900 GAS COOKER WITH GAS OVEN 80X90 (48KW)
09398502	900 GAS COOKER WITH GAS OVEN 120X90 (56KW)
09398503	900 GAS COOKER WITH GAS OVEN 120X90 (48+13KW)
09398504	900 GAS COOKER WITH GAS OVEN 120X90 (60+13KW)
09398505	900 GAS COOKER WITH ELECTRIC OVEN 80X90 (32+6KW)
09398506	900 GAS COOKER WITH ELECTRIC OVEN 80X90 (40+6KW)
09398507	900 GAS COOKER WITH ELECTRIC OVEN 120X90 (48+6KW)
09398508	900 GAS COOKER WITH ELECTRIC OVEN 120X90 (48+9KW)
09398515	900 GAS COOKER 40X90 - 2 BURNERS (16KW)

R

09398516	900 GAS COOKER 80X90 - 4 BURNERS (32KW)
09398517	900 GAS COOKER 80X90 - 4 BURNERS (40KW)
09398518	900 GAS COOKER 80X90 - 1 BURNER (14KW)
09398519	900 GAS COOKER 120X90 - 6 BURNERS (48KW)
09398525	900 ELECTRIC COOKER WITH ELECTRIC OVEN 80X90 (22KW)
09398526	900 ELECTRIC COOKER WITH ELECTRIC OVEN 120X90 (30KW)
09398527	900 ELECTRIC COOKER WITH ELECTRIC OVEN 120X90 (33KW)
09398535	900 ELECTRIC COOKER 40X90 - 2 BURNERS (8KW)
09398536	900 ELECTRIC COOKER 80X90 - 4 BURNERS (16KW)
09398537	900 ELECTRIC COOKER 120X90 - 6 BURNERS (24KW)
09398545	900 GAS WOK 40X90 - 1 BURNER
09398546	900 GAS WOK 80X90 - 2 BURNERS
09398550	900 GAS COOKER SOLID TOP 80X90
09398555	900 INDUCTION COOKER 40X90
09398556	900 INDUCTION COOKER 80X90
09398560	900 INFRARED CERAMIC COOKER 40X90
09398561	900 INFRARED CERAMIC COOKER 80X90
09398565	900 GAS GRILL SMOOTH 40X90
09398566	900 GAS GRILL SMOOTH 40X90 - CHROME
09398567	900 GAS GRILL GROOVED 40X90
09398568	900 GAS GRILL GROOVED 40X90 - CHROME
09398569	900 GAS GRILL SMOOTH 80X90
09398570	900 GAS GRILL DOUBLE SMOOTH 80X90 - CHROME
09398571	900 GAS GRILL 1/2 GROOVED 80X90
09398572	900 GAS GRILL 1/2 GROOVED 80X90 - CHROME
09398573	900 GAS GRILL GROOVED 80X90
09398574	900 GAS GRILL GROOVED 80X90 - CHROME
09398580	900 ELECTRIC GRILL SMOOTH 40X90
09398581	900 ELECTRIC GRILL SMOOTH 40X90 - CHROME
09398582	900 ELECTRIC GRILL GROOVED 40X90
09398583	900 ELECTRIC GRILL GROOVED 40X90 - CHROME
09398584	900 ELECTRIC GRILL SMOOTH 80X90
09398585	900 ELECTRIC GRILL SMOOTH 80X90 - CHROME
09398586	900 ELECTRIC GRILL 1/2 GROOVED 80X90
09398587	900 ELECTRIC GRILL 1/2 GROOVED 80X90 - CHROME
09398588	900 ELECTRIC GRILL GROOVED 80X90

RU

09398589	900 ELECTRIC GRILL GROOVED 80X90 - CHROME
09398590	900 GAS CHARGRILL 40X90 - 1 ZONE
09398591	900 GAS CHARGRILL 80X90 - 2 ZONE
09398593	900 GAS CHARGRILL 120X90 - 3 ZONE
09398595	900 GAS LAVASTONE GRILL 40X90
09398596	900 GAS LAVASTONE GRILL 80X90
09398600	900 GAS CHARGRILL 80X90 - 5 ZONE
09398601	900 GAS CHARGRILL 120X90 - 8 ZONE
09398605	900 GAS FRYER 40X90
09398606	900 GAS FRYER 80X90
09398607	900 ELECTRIC FRYER 40X90
09398608	900 ELECTRIC FRYER 80X90
09398615	900 GAS PASTA COOKER 40X90
09398616	900 GAS PASTA COOKER 80X90
09398617	900 ELECTRIC PASTA COOKER 40X90
09398618	900 ELECTRIC PASTA COOKER 80X90
09398625	900 ELECTRIC CHIPS UNIT 40X90
09398630	900 GAS BAIN MARIE 40X90
09398631	900 GAS BAIN MARIE 80X90
09398632	900 ELECTRIC BAIN MARIE 40X90
09398633	900 ELECTRIC BAIN MARIE 80X90
09398640	900 GAS BOILING PAN 100L 80X90 - INDIRECT
09398641	900 GAS BOILING PAN 150L 80X90 - INDIRECT
09398642	900 GAS BOILING PAN 250L 100X90 - INDIRECT
09398643	900 GAS BOILING PAN 100L 80X90 - DIRECT
09398644	900 GAS BOILING PAN 150L 80X90 - DIRECT
09398645	900 GAS BOILING PAN 250L 100X90 - DIRECT
09398646	900 ELECTRIC BOILING PAN 100L 80X90 - INDIRECT
09398647	900 ELECTRIC BOILING PAN 150L 80X90 - INDIRECT
09398648	900 ELECTRIC BOILING PAN 250L 100X90 - INDIRECT
09398655	900 GAS BOILING PAN WITH VALVE 250L 100X90 - INDIRECT
09398656	900 GAS BOILING PAN WITH VALVE 250L 100X90 - DIRECT
09398657	900 GAS BOILING PAN WITH VALVE 100L 80X90 - INDIRECT
09398658	900 GAS BOILING PAN WITH VALVE 150L 80X90 - INDIRECT
09398659	900 GAS BOILING PAN WITH VALVE 100L 80X90 - DIRECT
09398660	900 GAS BOILING PAN WITH VALVE 150L 80X90 - DIRECT

RV

09398665	900 GAS TILTING BRATT PAN 80L 80X90	
09398666	900 GAS TILTING BRATT PAN 100L 100X90	
09398667	900 GAS TILTING BRATT PAN 130L 120X90	
09398668	900 GAS TILTING BRATT PAN 205L 160X90	
09398669	900 ELECTRIC TILTING BRATT PAN 80L 80X90	
09398670	900 ELECTRIC TILTING BRATT PAN 100L 100X90	
09398671	900 ELECTRIC TILTING BRATT PAN 130L 120X90	
09398672	900 ELECTRIC TILTING BRATT PAN 205L 160X90	
09398675	900 GAS TILTING BRATT PAN WITH VALVE 100L 100X90	
09398676	900 GAS TILTING BRATT PAN WITH VALVE 130L 120X90	
09398677	900 GAS TILTING BRATT PAN WITH VALVE 205L 160X90	
09398678	900 GAS TILTING BRATT PAN WITH VALVE 80L 80X90	
09398685	900 COUNTERTOP 40X90	
09398686	900 COUNTERTOP 80X90	
09398690	900 BASE CUPBOARD 40X90 - WITH DOOR	
09398691	900 BASE CUPBOARD 80X90 - WITH DOOR	
09398692	900 BASE CUPBOARD 120X90 - WITH DOOR	
09398693	900 BASE CUPBOARD 40X90 - WITHOUT DOOR	
09398694	900 BASE CUPBOARD 80X90 - WITHOUT DOOR	
09398695	900 BASE CUPBOARD 120X90 - WITHOUT DOOR	
09398700	900 ELECTRIC AUTOMATIC TILTING KETTLE 150L	
09398701	900 ELECTRIC AUTOMATIC TILTING KETTLE 200L	
09398702	900 GAS AUTOMATIC TILTING KETTLE 100L	
09398703	900 GAS AUTOMATIC TILTING KETTLE 150L	
09398704	900 GAS AUTOMATIC TILTING KETTLE 500L	
09398710	900 GAS BOILING PAN 300L - INDIRECT	
09398711	900 GAS BOILING PAN 400L - INDIRECT	
09398712	900 GAS BOILING PAN 500L - INDIRECT	
09398713	900 ELECTRIC BOILING PAN 300L - INDIRECT	
09398714	900 ELECTRIC BOILING PAN 400L - INDIRECT	
09398715	900 ELECTRIC BOILING PAN 500L - INDIRECT	
09398720	900 GAS BOILING PAN 250L 100X110 - DIRECT	
09398721	900 GAS BOILING PAN 250L 100X110 - INDIRECT	
09398722	900 ELECTRIC BOILING PAN 250L 100X110 - INDIRECT	
09399300	KNEE OPERATED WASHING SINK	<i>RV</i>
09399302	RECTANGULAR SINK/BOWL 500X600X300	

09400000	R600 GN REFRIGERATOR	
09400005	FR600 GN FREEZER	
09400010	R1200 GN REFRIGERATOR	
09400015	FR1200 GN FREEZER	
09400101	FR200 SS FREEZER	
09400106	R200 SS REFRIGERATOR	
09400110	FR400 SS FREEZER	
09400115	R400 SS REFRIGERATOR	
09400120	FR600 SS FREEZER	
09400125	R600 SS REFRIGERATOR	
09400130	R400 SN REFRIGERATOR	
09400135	FR400 SN FREEZER	
09400140	R400 W REFRIGERATOR	
09400145	R600 W REFRIGERATOR	
09400150	FR400 W FREEZER	
09400155	FR600 W FREEZER	
09400175	R800 BAKERY REFRIGERATOR	
09400180	FR800 BAKERY FREEZER	
09400200	PIZZA TABLE 2	
09400205	PIZZA TABLE 3	
09400207	PIZZA TABLE 2G	
09400208	PIZZA TABLE 3G	
09400210	PIZZA TABLE 3 (7 DRAWERS)	
09400317	STRAIGHT 950	
09400320	STRAIGHT 1200	
09400323	STRAIGHT 1400	
09400326	STRAIGHT 1500	
09400329	STRAIGHT 1600	
09400332	STRAIGHT 1800	
09400335	STRAIGHT 2000	
09400390	WTFR 2 WORKTABLE	
09400395	WTFR 3 WORKTABLE	
09400400	WTC 2 WORKTABLE	
09400405	WTC 3 WORKTABLE	
09400410	SAL900 SLT	R
09400415	SAL903 SLT	

09400420	SAL901 WORKTABLE	
09400435	SAL903 WORKTABLE	
09400750	HOT DISPLAY 2X1/2 GN	
09400751	HOT DISPLAY 4X1/2 GN	
09400755	HOT DISPLAY 4X1/2 GN CLOSED	
09400770	HOT DISPLAY 25L	
09400775	HOT DISPLAY 45L	
09400780	HOT DISPLAY 50L	
09400785	HOT DISPLAY 96L	
09400788	HOT DISPLAY 115L	
09400790	HOT DISPLAY 136L	
09400795	HOT DISPLAY 186L	
09400800	SHOWCASE 58L WHITE	
09400801	SHOWCASE 58L BLACK	
09400805	SHOWCASE 78L WHITE	
09400806	SHOWCASE 78L BLACK	
09400810	SHOWCASE 98L WHITE	
09400811	SHOWCASE 98L BLACK	
09400815	SHOWCASE 235L WHITE	
09400816	SHOWCASE 235L BLACK	
09400820	SHOWCASE 175L WITH STAND	
09400821	SHOWCASE 255L WITH STAND	
09400831	SHOWCASE 100L BLACK	
09400836	SHOWCASE 100L WHITE	
09400837	SHOWCASE 300L SQ	
09400838	SHOWCASE 400L SQ	
09400839	SHOWCASE 500L SQ	
09400841	CAKE SHOWCASE 100L	
09400842	SHOWCASE 400L	
09400843	SHOWCASE 500L	
09400845	DELUXE SHOWCASE 120L	
09400846	HOT DISPLAY DELUXE 120L	
09400847	DELUXE SHOWCASE 125L	
09400850	DELUXE SHOWCASE 160L	
09400851	HOT DISPLAY DELUXE 160L	RJ
09400855	SHOWCASE OPEN 220L	

09400865	SHOWCASE SUSHI 52L
09400866	SHOWCASE SUSHI 132L
09400870	SALAD SHOWCASE 67L
09400900	BAR COOLER 1
09400905	BAR COOLER 2
09400910	BAR COOLER 3
09400915	BAR COOLER SLIDE 2
09400920	BAR COOLER SLIDE 3
09400921	BAR COOLER UPRIGHT 1
09400922	BAR COOLER UPRIGHT 2
09400923	BLAST CHILLER 3 X 2/3GN
09400924	BLAST CHILLER 3 X 1/1GN
09400925	BLAST CHILLER 5
09400930	BLAST CHILLER 10
09402310	CHEST FREEZER 93L
09402320	CHEST FREEZER 140L
09402330	CHEST FREEZER 192L
09402340	CHEST FREEZER 282L
09402350	CHEST FREEZER 354L
09402360	CHEST FREEZER 446L
09402370	CHEST FREEZER 502L
09403000	GLASS CHILLER
09403100	DRY ICE MACHINE
09404000	BOTTLE COOLER 50L
09404010	BOTTLE COOLER 80L
09404020	BOTTLE COOLER 360L
09404025	BOTTLE COOLER 700L
09404030	BOTTLE COOLER 800L
09500000	SOUS VIDE 8.5L
09500200	VACUUM SEALER 310 SS
09500500	SOUS VIDE UNIVERSAL
09500600	SOUS VIDE UNIVERSAL PRO
09500700	SOUS VIDE 12.5L
09500800	SOUS VIDE 28L
09501000	VACUUM SEALER 310
09501100	VACUUM SEALER 406

re

09501200	VACUUM PACKING MACHINE 280 - NO OIL
09501300	VACUUM PACKING MACHINE 250 - LIQUID
09505000	WHIPPED CREAM MACHINE 2
09505005	WHIPPED CREAM MACHINE 5
09367912	MAXIMA PC GN PAN 1/1 H150MM
09367930	MAXIMA PC GN LID 1/1
09367911	MAXIMA PC GN PAN 1/1 H100MM

R



KAYALAR

ÇELİK SAN. VE TİC. A.Ş.

EU MANUFACTURER DECLARATION OF COMFORMITY
AB ÜRETİCİ UYGUNLUK DEKLERASYONU

The technical file and test reports of the following product have been based and found in compliance with the Parliament and Council Directive 2014/35/EU of 26 February 2014 on the harmonization of the laws of Member States relating to electrical equipment designed for use within certain voltage limits, by Kayalar Çelik San. Tic. A.Ş. is declared.

Teknik dosya ve test raporlarına dayanarak, belirtilen ürünün Avrupa Birliği teknik komisyonu tarafından 26 Şubat 2014 tarihinde yayınlanan 2014/35/AB Belirli Gerilim Sınırları Dahilinde Çalışmak Üzere Tasarlanmış Teçhizat ile ilgili yönetmeliğe uygunluğu, KAYALAR ÇELİK SAN. TİC. A.Ş. tarafından beyan edilir.

Manufacturer: Kayalar Çelik San. Ve Tic. A.Ş.
Üretici: Türkoba Mahallesi, Kayalar Caddesi, No:7-1
Büyükkçekmece / İSTANBUL

Product : Counter Type Refrigerators R290
Ürün : Tezgah Tipi Buzdolapları R290

Type / Model: 206480011210, 206880111210, 206281111210, 207480011210,
207880111210, 207281111210, 206480011410, 206880111410,
207480011410, 207880111410, 206480088210, 206880888210,
206288888210, 207480088210, 207880888210, 207288888210,
206480055210, 206880555210, 206285555210, 207480055210,
207880555210, 207285555210, 206480053410, 206880553410,
207480053410, 207880551210, 209980033010, 209080333210,
209083333210

Tip / Model:

Base of Declaration: File of Technical Documentation and Test Reports
Deklerasyon Dayanağı: Teknik Dokümantasyon Dosyası ve Test Raporları

İstanbul, Date/Tarih 01.03.2023

KAYALAR ÇELİK SAN. TİC. A.Ş.

İSLAM KAYA
General Manager / Genel Müdür

KAYALAR ÇELİK SAN. VE TİC. A.Ş.
Türkoba Mah. Kayalar Cad. Kayalar
Çelik Fabrikası Apt. No: 7/1
Büyükkçekmece / İSTANBUL
Tel: 0212 444 59 57 Fax: 0212 859 00 14
Büyükkçekmece V.D.: 536 003 1842

EU DECLARATION OF CONFORMITY

We: UGUR Sogutma Makinaları Sanayi ve Ticaret A.S.

Yeni Sanayi Mahallesi Devlet Karayolu Caddesi no:127/C – 09900 Nazilli – Aydın - TURKEY

Declare under our own responsibility that the product:

USS 374 DTK BK

To which the declaration refers is in compliance with the following:

MACHINERY SAFETY-DIRECTIVES 2006/42/CE (Machine) and IC 087, 2014/35/UE (Low Voltage)	
EN 60335-1:2012/A1:2019	Safety of household and similar electrical appliances – Part 1 – General requirements
EN 60335-2-89:2010+A1:2016+A2:2017	Safety of household and similar electrical appliances – Part 2-89 – Specific requirements for Commercial refrigerator and freezers
EN 62233:2008	Measurements method for Electromagnetic Field (EMF) of Household Appliances and similar apparatus with regard to Human exposure
EN 62471:2009	Photo biological safety of lamps and lamp system

ELECTROMAGNETIC COMPABILITY (EMC)-DIRECTIVE 2014/30/UE (harmonisation of the laws relating to EMC)	
EN 55014-1:2017	Electromagnetic compatibility - Requirements for household appliances, electric tools and similar apparatus. Part 1: Emission
EN 55014-2:2015	Electromagnetic compatibility - Requirements for household appliances, electric tools and similar apparatus. Part 2: Immunity
EN IEC 61000-3-2:2019	Electromagnetic Compatibility (EMC) - Part 3-2: Limits for harmonic current emissions (equipment input current $\leq 16A$ per phase
EN 61000-3-3:2013	Electromagnetic Compatibility (EMC) - Part 3: Limits. Section 3: Limitation of voltage fluctuations and flicker in low-voltage supply systems for equipment with rated current $\leq 16A$

PRESSURE EQUIPMENT DIRECTIVE (PED) 2014/68/UE	
As the equipment falls into a class lower than I, this directive does not apply to the product (art.1 par.3.6)	

ECODESIGN- ErP DIRECTIVE 2009/125/CE	
Reg. (EU) 2017/1369	Energy Consumption Labelling Indications by Energy-related products
Reg. (EU) 2019/2018	Supplementing Regulation (EU) 2017/1369 of the European Parliament and of the Council with regard to energy labelling of refrigerating appliances with a direct sales function
Reg. (EU) 2019/2024	Laying down ecodesign requirements for refrigerating appliances with a direct sales function pursuant to Directive 2009/125/EC of the European Parliament and of the Council

FOODSTAFF COMPATIBILITY	
Regulation (CE) Nr. 10/2011	Plastics intended to come into contact with food
Regulation (CE) Nr. 1935/2004	Materials and articles intended to come into contact with food
Regulation (CE) Nr. 2023/2006 (amending reg. 1935/2004)	Good manufacturing practise for materials and articles intended to come into contact with food
Regulation (CE) Nr. 282/2008 (amending reg. 2023/2006)	Recycled plastic Materials and articles intended to come into contact with food

ROHS AND WEEE	
EN 50581:2012	Technical documentation for the assessment of electrical and electronic products with respect to the restriction of hazardous substances
Directive 2011/65	EC of the European Parliament and of the Council of 8th June 2011
Directive 2002/96	EC of the European Parliament and of the Council of 27th January 2003

REACH (Registration, Evaluation, Authorisation and restriction of Chemicals)	
Regulation (CE) Nr. 1907/2006	Registration, Evaluation, Authorisation and restriction of Chemicals (REACH), establishing a European Chemicals Agency, amending dir. 1999/45 and replacing the following: Reg. CEE nr. 793/93 - Reg. CEE nr. 1488/94 – dir. 76/769/CEE – dir. 91/155/CEE – dir. 93/67/CEE – dir. 93/105/CE – dir. 2000/21/CE.

SUBSTANCES THAT DEplete THE OZONE LAYER	
Regulation (CE) Nr. 1005/2009	Rules on the production, import, export, placing on the market, use recovery, recycling, reclamation and destruction of substances that deplete the ozone layer and of equipment containing those substances.

The person authorized to draw-up the Technical Documentation is:

Bora DEVRİM (R&D DIRECTOR)

Nazilli: 20.01.2023

