



ONECARE

"Number One in Care"



INCONTINENCE BODY CARE SET



ANTIBACTERIAL AND ANTIFUNGUCIDAL BODY CARE SET

OneCare

BARRIER CREAM INCONTINENCE WIPES

BARRIER CREAM INCONTINENCE PERINEAL CLOTHS

WASH GLOVES WITH BARRIER CREAM

WASHCAP- SHAMPOO CAP

DISPOSABLE HYGIENIC CLEANING FIBER

ADHESIVE REMOVE SPRAY

WanCare

ANTIBACTERIAL AND ANTIFUNGUCIDAL BODY CLEANING WIPES

ANTIBACTERIAL AND ANTIFUNGUCIDAL PERINEAL AREA CLEANING WIPES

ANTIBACTERIAL AND ANTIFUNGUCIDAL WASH GLOVES

ANTIBACTERIAL AND ANTIFUNGUCIDAL HAIR WASHCAP

OneCare

BARRIER CREAM INCONTINENCE WIPES



KAF G49	8 PCS
KAF G01	12 PCS
KAF G08	25 PCS
KAF G07	50 PCS
KAF G50	100 PCS



Contains 3% Dimethicone



Barrier effect



Cleans, softens and soothes



Suitable for microwave use



Latex, lanolin, alcohol, Paraben free



Nonwoven fabric



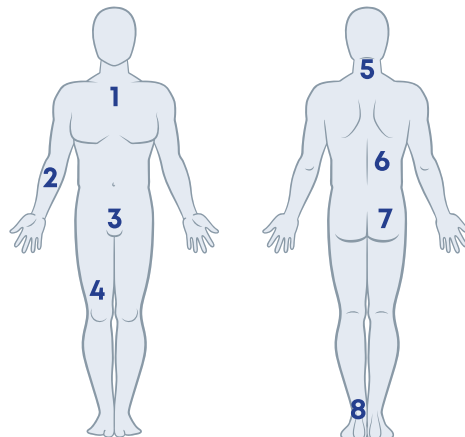
No rinsing or drying required

COMPOSITION

Aqua, Phospholipid, Dimethicone, Glycerin, EDTA, Citric Acid, Polysorbate 20, Phenoxyethanol, Caprylyl Glucol.

USAGE AREAS

Barrier Cream Incontinence Wipes makes a barrier layer in order to protect the skin of patients with special needs, such as those with limited mobility, bedridden and intensive care patients, from external factors. It provides complete body cleaning and care for patients who cannot bath.



- 1-CHEST AREA
- 2-SHOULDERS AND ARMS
- 3-PERINEAL AREA
- 4-LEGS
- 5-BACK OF THE HEAD
- 6-BACK AREA
- 7-HIP AREA
- 8-FEET



OneCare

BARRIER CREAM INCONTINENCE PERINEAL CLOTHS



KAF G51	8 PCS
KAF G06	12 PCS
KAF G02	25 PCS
KAF G05	50 PCS
KAF G52	100 PCS



Contains 3%
Dimethicone



Barrier
effect



Cleans, softens
and soothes



Suitable for
microwave
use



Latex, lanolin,
alcohol, Paraben
free



Nonwoven
fabric



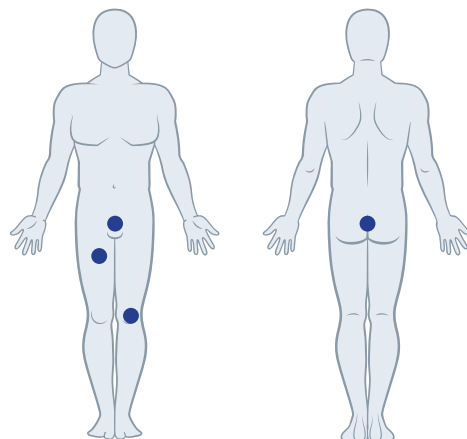
No rinsing
or drying
required

COMPOSITION

Aqua, Phospholipid, Dimethicone, Glycerin,
EDTA, Citric Acid, Polysorbate 20,
Phenoxyethanol, Caprylyl Glucol.

USAGE AREAS

Barrier Cream Incontinence Perineal Cloths makes a barrier protective layer to protect skin of patients from external factors with special needs, limited mobility, recumbent and intensive care patients. Provides complex body care for such patients who cannot bath.



Perineal Region
Is Usage Area



OneCare

WASH GLOVES WITH BARRIER CREAM



KAF G16 10 PCS



Contains 3% Dimethicone



Barrier effect



Cleans, softens and soothes



Suitable for microwave use



Latex, lanolin, alcohol, Paraben free



Nonwoven fabric



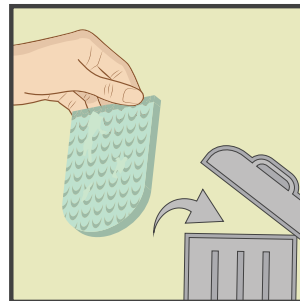
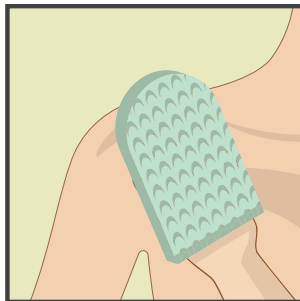
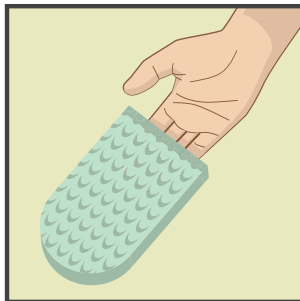
No rinsing or drying required

COMPOSITION

Aqua, Phospholipid, Dimethicone, Glycerin, EDTA, Citric Acid, Polysorbate 20, Phenoxyethanol, Caprylyl Glucol.

USAGE AREAS

Wash Gloves makes barrier layer in the area where it is used to prevent skin damage caused by incontinence, for general cleaning of the body area in inpatients and patients with limited mobility. It is applied to the desired area by wiping. A separate pouch is used for each region.



OneCare

WASHCAP- SHAMPOO CAP



KAF G15

1 PCS



Contains 3%
Dimethicone



Barrier
effect



Cleans, softens
and soothes



Suitable for
microwave
use



Latex, lanolin,
alcohol, Paraben
free



Nonwoven
fabric



No rinsing
or drying
required

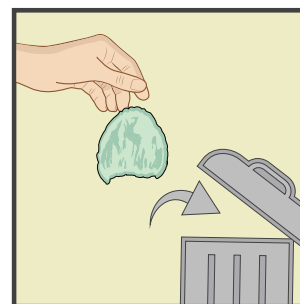
- Contains aloe vera.
- Nourishes and cares for the hair with ProVitamin B5 and Vitamin E.
- With its formulation, it removes dead cells from the scalp.

COMPOSITION

Water, Allantoin, Botanic Aloe Vera, Herbalia Chamomile, Gluconate(Chlorhexidine Gluconate), Citric Acid, Dimethicone, Copolyol, Edta, Glucoside(Plantacare 1200), Nipaquart Bpx, D-panthenol, Vitamin E Promasphere, Phospholipid.

USAGE AREAS

It provides effective cleaning and care with its barrier cream content for the hair and head area of the patients who cannot wash themselves, such as bedridden, limited mobility, intensive care patients, etc. It is applied in the form of a bone, massage and wiping attached to the head and hair area.



OneCare

DISPOSABLE HYGIENIC CLEANING FIBER



KAF G17

20 PCS



Cleans, softens and soothes



It helps you maintain your cleanliness and with a few drops of water



You can provide perfect cleaning with a few drops of water



Paraben free



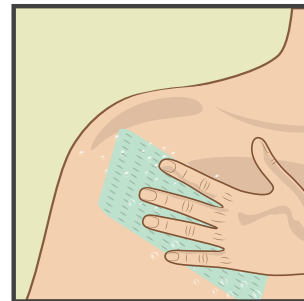
Does not require rinsing

COMPOSITION

Water, Sodium Laureth Sulfate, Cocos Nucifera, (Coconut) Oil, Cocamidopropyl Betaine, Cocamide DEA, Sodium Chloride, Glycerin, Tetrasodium EDTA, Citric Acid, Methylisothiazolinone, CI 42090, Hexyl Cinnamal, Butylphenyl-Benz Methylolpropan, CI 42090.

USAGE AREAS

It is a disposable hygienic cleaning fiber impregnated with a special sponge and humidifier, which takes into account the ideal body washing and cleaning quality in cases where it is not possible and difficult to take a bath. The fiber is foamed with a few drops of water and applied to the body by wiping. The foaming body is wiped with a dry cloth.



OneCare

ADHESIVE REMOVE SPRAY



ONCR 002

50 ML

Alcohol
free100% silicone
based

Skin friendly

It does not
contain
chemical gas

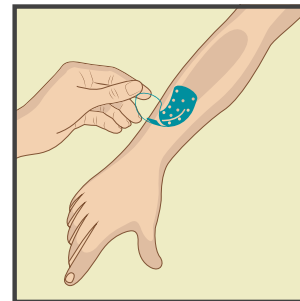
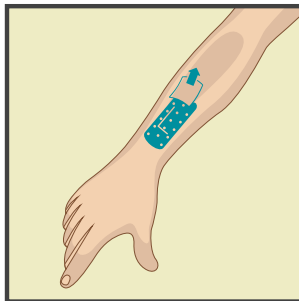
- Provides atraumatic application.
- Hypoallergenic.
- It is effective in instantly removing the strongest adhesive and adhesive residues.
- It eliminates the side effects of medical adhesives on the skin.

COMPOSITION

%100 silicone based

USAGE AREAS

It is used to facilitate the painless and trauma-free removal of adhesive dressings, plasters and other adhesive products from the skin in a few seconds. It can be used safely on the skin of children, adults and the elderly. The remover is squeezed all over the product, waited for a few seconds and the adhesive is gently pulled from the skin.



WanCare

ANTIBACTERIAL AND ANTIFUNGUCIDAL BODY CLEANING WIPES



KAF G09	12 PCS
KAF G10	25 PCS
KAF G11	50 PCS



Cleans, softens and soothes



Latex, lanolin, alcohol, Paraben free



Does not require extra rinsing and drying after use.



It prevents the formation of fungus and irritation.



Suitable for microwave use



Nonwoven fabric



Contains 5% Chlorhexidine (Net Ratio 1%)



Bactericidal and fungicidal in 1 minute

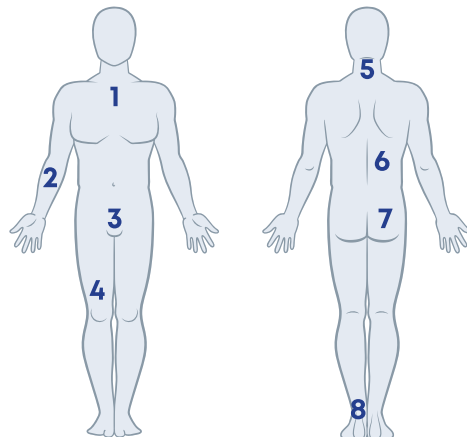
- Biocidal Product
- Anti-bacterial cleaning for the whole body in 10 minutes.
- It nourishes and moisturizes the skin with vitamin E, vitamin B, aloe vera and phospholipids.
- It protects against microorganisms with Sodium Benzoate and Potassium Sorbate.
- It prevents the formation of bacteria with Chlorhexidine Digluconate.

COMPOSITION

(%) 20 Conc. Chlorhexidine Digluconate 5%, emulsifier, filler, surfactant, perfume, skin softener, pH adjuster, other excipients, water.

USAGE AREAS

It is used to wipe the body area, hands, arms and desired area. It is applied in the form of wiping the body.



- 1-CHEST AREA
- 2-SHOULDERS AND ARMS
- 3-PERINEAL AREA
- 4-LEGS
- 5-BACK OF THE HEAD
- 6-BACK AREA
- 7-HIP AREA
- 8-FEET



WanCare

ANTIBACTERIAL AND ANTIFUNGUCIDAL PERINEAL AREA CLEANING WIPES



KAF G12	12 PCS
KAF G13	25 PCS
KAF G14	50 PCS



Cleans, softens and soothes



Latex, lanolin, alcohol, Paraben free



Does not require extra rinsing and drying after use.



It prevents the formation of fungus and irritation.



Suitable for microwave use



Nonwoven fabric



Contains 5% Chlorhexidine (Net Ratio 1%)



Bactericidal and fungicidal in 1 minute

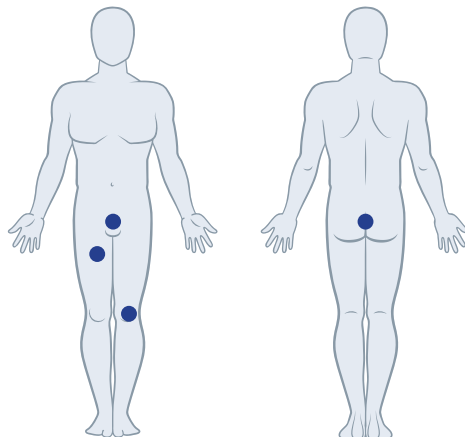
- Biocidal Product
- Anti-bacterial cleaning for the whole body in 10 minutes.
- It nourishes and moisturizes the skin with vitamin E, vitamin B, aloe vera and phospholipids.
- It protects against microorganisms with Sodium Benzoate and Potassium Sorbate.
- It prevents the formation of bacteria with Chlorhexidine Digluconate.

COMPOSITION

(%) 20 Conc. Chlorhexidine Digluconate 5%, emulsifier, filler, surfactant, perfume, skin softener, pH adjuster, other excipients, water.

USAGE AREAS

It is used for wiping, cleaning and complete care of the perineal region. It is applied to the perineal area by wiping.



Perineal Region
Is Usage Area



WanCare

ANTIBACTERIAL AND ANTIFUNGUCIDAL WASH GLOVES



KAF G03 10 PCS



Cleans, softens and soothes



Latex, lanolin, Does not require extra rinsing and drying after use.



Does not require extra rinsing and drying after use.



It prevents the formation of fungus and irritation.



Suitable for microwave use



Nonwoven fabric



Contains 5% Chlorhexidine (Net Ratio 1%)



Bactericidal and fungicidal in 1 minute

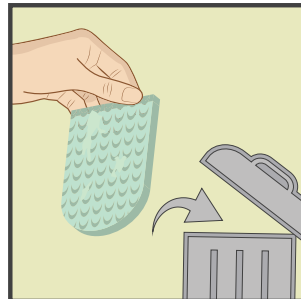
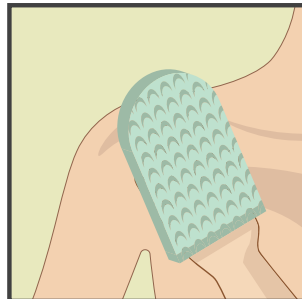
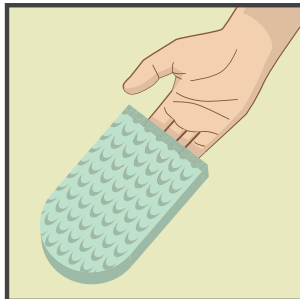
- Biocidal Product
- Anti-bacterial cleaning for the whole body in 10 minutes.
- It nourishes and moisturizes the skin with vitamin E, vitamin B, aloe vera and phospholipids.
- It protects against microorganisms with Sodium Benzoate and Potassium Sorbate.
- It prevents the formation of bacteria with Chlorhexidine Digluconate.

COMPOSITION

(%) 20 Conc. Chlorhexidine Digluconate 5%, emulsifier, filler, surfactant, perfume, skin softener, pH adjuster, other excipients, water.

USAGE AREAS

It is used for general cleaning of the body area in inpatients and patients with limited mobility. It is applied to the desired area by wiping. A separate pouch is used for each region.



WanCare

ANTIBACTERIAL AND ANTIFUNGUCIDAL HAIR WASHCAP



KAF G04 1 PCS



Cleans, softens and soothes



Latex, lanolin, alcohol, Paraben free



Does not require extra rinsing and drying after use.



It prevents the formation of fungus and irritation.



Suitable for microwave use



Nonwoven fabric



Contains 5% Chlorhexidine (Net Ratio 1%)



Bactericidal and fungicidal in 1 minute

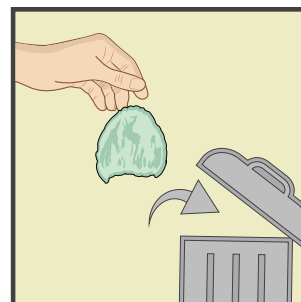
- It provides cleaning with antibacterial effect for hair and scalp.
- Biocidal Product
- Anti-bacterial cleaning for the whole body in 10 minutes.
- It nourishes and moisturizes the skin with vitamin E, vitamin B, aloe vera and phospholipids.
- It protects against microorganisms with Sodium Benzoate and Potassium Sorbate.
- It prevents the formation of bacteria with Chlorhexidine Digluconate.

COMPOSITION

(%) 20 Conc. Chlorhexidine Digluconate 5%, emulsifier, filler, surfactant, perfume, skin softener, pH adjuster, other excipients, water.

USAGE AREAS

It is used for hair cleaning of patients with limited mobility and inpatients. It is applied in the form of a bone, massage and wiping attached to the head and hair area.



OneCare

INCONTINENCE BODY CARE GROUP



WanCare

ANTIBACTERIAL AND ANTIFUNGUCIDAL BODY CARE GROUP



.../.../.....

A series of horizontal dotted lines for writing notes.



KAFGRUP
SAĞLIK HİZMETLERİ