

DESCRIPTION
GENERAL INFORMATION

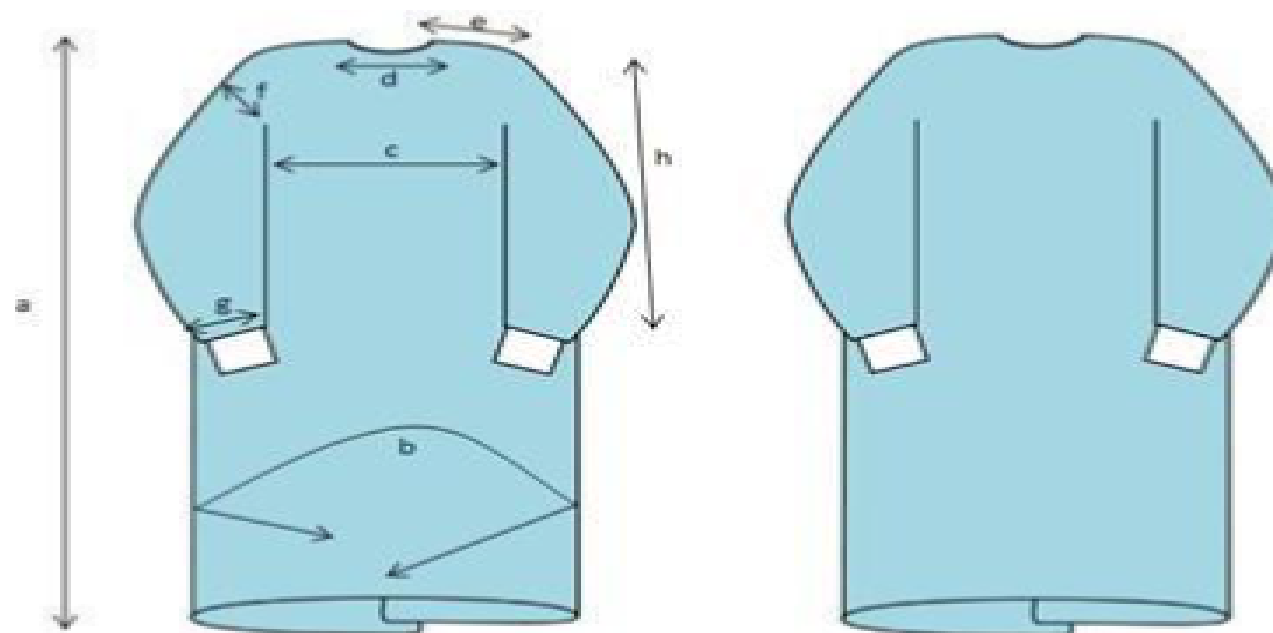
Product :	SURGICAL GOWN SET	Standard :	DIR 93/42/CE
Art. N° :	INT-60M-S1	Sterile :	No
Class :	1	All items	LATEX-FREE

Products
STANDARD SURGICAL GOWN (M)

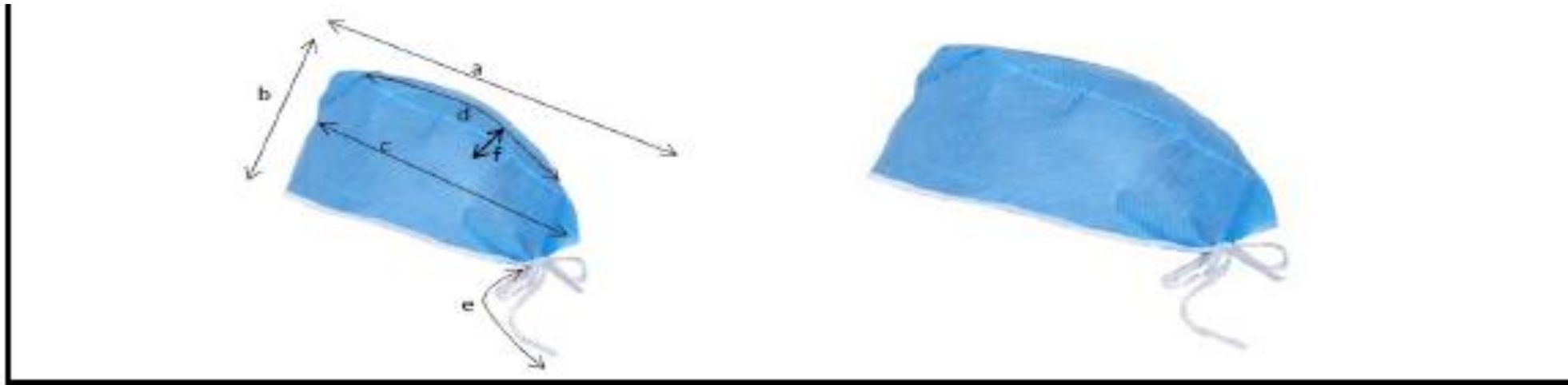
Size	a (total height)	b(Total width)	c (Chest width)	d (Collar width)	e (Shoulder width)	f (Armhole height)	g(Cuffs width)	h (Sleeves length)
Medium	125	160	80	23	21	26	15	58

	Material	Weight	Color
Fabric	SMS	40g/m ² (+/- 2)	Medical Blue

Stitch way	Normal single stitch
All items	LATEX-FREE


SURGICAL CAP

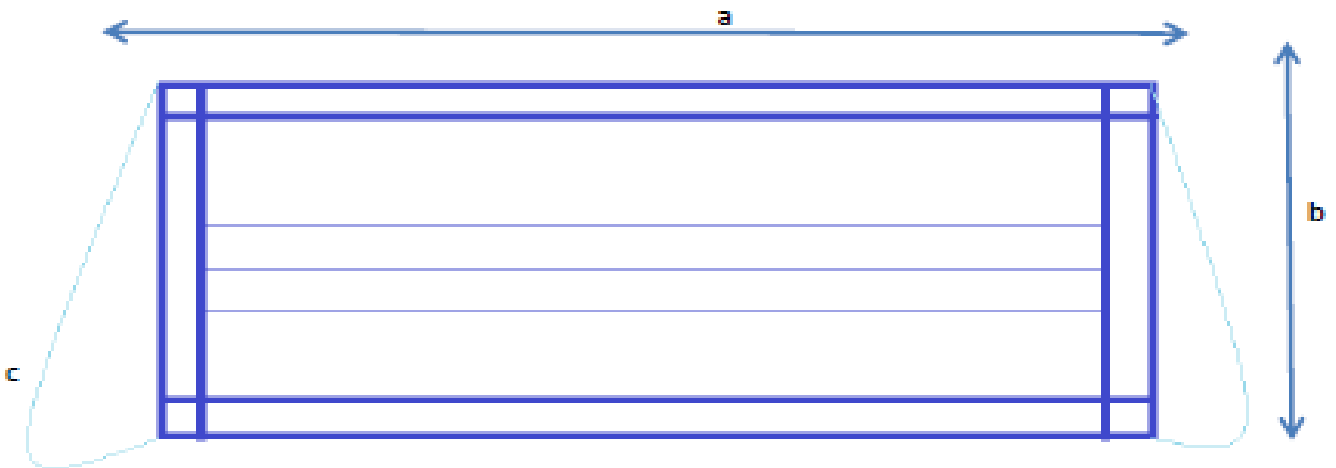
Fabric	Material	Weight	Color	Use
	SLS	33 g/m ² (+/-2)	Blue	SURGICAL CAP
TECHNICAL DRAWING				
Letter	Designation	Value (cm)	Tolerance (cm)	
A	total width	40	+/-2	
B	total length	18	+/-2	
C	head width	64	+/-2	
D	top length	18	+/-2	
E	lace length	10	+/-2	
F	top width	20	+/-2	



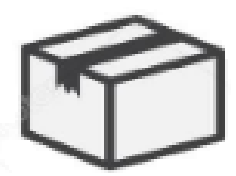
SURGICAL MASK

NITRILE GLOVES (M)

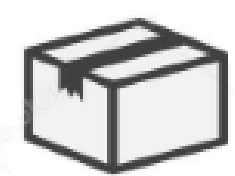
Letter	Designation	Value (cm)	Tolerance (cm)
A	total length	10	+/-5
B	total width	17	+/-5



PACKING INFORMATION



	Material	Size (LxWxH) cm
Carton	Brown carton	L: 39xW:45xH:56
Weight	Carton	9.87 kg (+/- 5)



Packing condition

60 units / carton