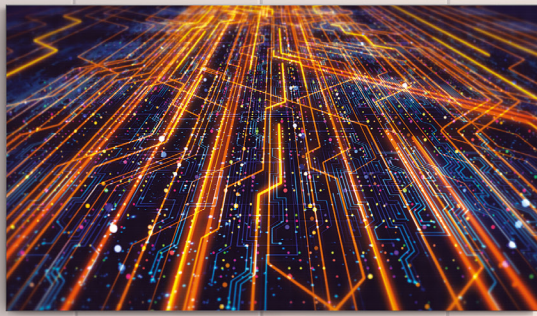


SAMSUNG



Indoor LED All-In-One

IAC series (LH015IACCHS/ZA)

This is the true all-in-one.

Discover a true all-in-one LED display. Experience easier installation than ever with Samsung's exclusive Quick Build technology. Dock the two background plates and hang just four preset modules, and that's it. It can take as little as two hours to install a giant screen in your space. The IAC series also integrates the control box so it's built into the display, eliminating time-consuming configuration between control box and cabinet. As no additional purchases or components are required, it allows you to focus on getting your display up and running fast. All you have to do is enjoy its brilliant performance. This is Samsung's promise of all-in-one.

Key features



Quick Build

Samsung's exclusive technology enables a drastically simplified installation taking as little as two hours to complete a giant 130-inch screen.

* Install time estimate based on internal testing.



Built-in Control Box

The built-in control box eliminates a cumbersome configuration process to get the display up and running faster.



All-inclusive Components

From the control box and wall brackets to speakers and deco bezels, every extra peripheral needed to begin operation is included.



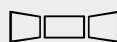
Brilliant Visuals

The IAC series produces images with vivid color expression, reduced noise and a full range of grays and blacks.



HDR

LED HDR turns any content into HDR-level without requiring special metadata.



Multi-Screen Connection

Samsung's IAC series allows users to combine multiple displays side by side for simultaneous use, expanding business possibilities for large meeting spaces.

Specifications

Model		IAC
		130" 2K LH015IACCHS/ZA
Physical Parameter	Pixel Pitch	1.5 mm
	Pixel Configuration	1 red, 1 green, 1 blue
	Configuration (L x H, Per screen)	1,920 x 1,080 pixels
	Diode Type	Surface Mount Device (SMD)
	Dimensions (mm / in.), L x H x D, Per screen)	2,888.5 x 1,628.5 x 56.2 mm / 113.7 x 64.1 x 2.2 in. (62.2 mm / 2.4 in. total depth with Wall mount)
	Dimensions (inch, Diagonal x D, Per screen)	130 x 2.2 inch
	No. of Modules (W x H, Per screen)	12 x 9
Optical Parameter	Weight (Per screen)	125 kg / 275.6 lbs.
	Brightness (Peak/Max) ⁽¹⁾	1,000 nit / 500 nit
	Contrast Ratio ⁽²⁾	6,000 : 1
	HDR Compatibility	LED HDR / AI Picture
	Viewing Angle - Horizontal	160°
	Viewing Angle - Vertical	160°
	Bit Depth	16 bit (Internal processing 20bit)
Electrical Parameter	Color Temperature - Default	6,500K ± 500K (Floating bin)
	Color Temperature - Adjustable	2,800K - 10,000K
	Video Rate	50/60 Hz
	Input Power Range	100-240 VAC, 50/60 Hz
	Power Consumption - Max	1700 (w/Screen)
	Power Consumption - Typ	685 (w/Screen)
	Heat Generation - Max	5800 (BTU/Screen)
Operational Parameter	Heat Generation - Typ	2337 (BTU/Screen)
	Refresh Rate	3,840 Hz
	Visual Refresh Rate	7,680 Hz
	Power Redundancy	No
	Working Temperature/Humidity	0°C~+40°C/10%~80%RH
	Storage Temperature/Humidity	-20°C~+45°C/5%~95%RH
	IP Rating	IP20
Connectivity / Sound	LED Lifetime	100,000 hours
	Controller	Built-in
	Input (Video)	DP1.2 (1), HDMI 1.4 (3), USB 2.0 (2)
	Output	Audio (Stereo mini Jack) / eARC
	WiFi/BT	O/O
	External Control	RS232C (In), RJ45
	Speaker	10W 2ch
Certification	Safety	62368-1, 60950-1
	EMC	Class A
	Eye-protection	TUV Eye Comfort
Service	Fire-protection	N/A
	Service	Front
Features	Operating System	Tizen 6.5
	MagicINFO	Yes
	Sensor	Temperature, Humidity, Eco Sensor
	Other	AI Picture, LED HDR, Dynamic Peaking
Accessories	Other SW Features	Workspace (Microsoft365/VMWare/RDP), Auto Source Switching and Recovery, Dicom Simulation Mode, SmartView+
	Accessories (In-box)	Décor Frame, Frame Kit, Buffer parts
Package	Remote Control	IR Remote Cotroller
	Box Dimension (mm / in., W x H x D)	1,840 x 1,847 x 594 mm / 72.4 x 72.7 x 23.3 in. (without pallet) 1,850 x 1,982 x 815 mm / 72.8 x 78 x 32 in. (with pallet)
Special Installation	Package Weight (Per cabinet) (kg / lbs.)	210 kg / 463 lbs.
	Curve	N/A
	Inclination	N/A
	Rotation	N/A
Other ⁽³⁾		Side by Side Installation with additional frame kit (Up to 4 screens)

Learn More samsung.com/display samsung.com/business insights.samsung.com
Product Support 1-866-SAM4BIZ
Follow Us youtube.com/samsungbizusa [@SamsungBizUSA](https://twitter.com/SamsungBizUSA)

SAMSUNG