

**MEDIMEAS**

Complete Range of Histopathological Solutions

# **COMBINED PORTFOLIO**

## Contents

### 1 Microtomes

Advance Manual Rotary Microtome	2-4
Semi-Automatic Microtome	6
Fully Automatic Microtome	8
Spencer Type Rotary Microtome	10

### 2 Tissue Processors

Automatic Tissue Processor Pinup Timer Based	14
Automatic Tissue Processor Microprocessor Based	16
Vacuum Tissue Processor Carousel Based	18
Automatic Linear Tissue Processor	20
Floor Standing Vacuum Tissue Processor	22
Manual Tissue Processor	24

### 3 Tissue Embedding

Tissue Embedding and Cold Plate	26
Tissue Embedding with Touch Screen & Cold Plate	28
Tissue Embedding Accessories	30

### 4 Cryostat Microtomes

Motorized Cryostat Microtome	32
Automatic Cryostat Microtome	34
Automatic Cryostat Microtome with Motorized Sectioning	36
Automatic Cryostat Microtome with Touch Screen	38

### 5 Slide Stainers

Microprocessor Based Carousel Slide Staining Machine	42
Linear Automatic Slide Staining Machine	44
Multi Slide Staining Machine	46

### 6 Flotation & Warmers

Paraffin Dispenser	48
Digital Tissue Flotation Workstation	50
Tissue Flotation Bath (Analog & Digital)	52-53
Slide Warming Table (Analog & Digital)	54-55

### 7 Grossing

Grossing Workstation	56
Grossing Workstation with integrated camera and Software	58
Accessories	59

### 8 Cover Slipper

Flexible Automatic Cover Slipper	60
----------------------------------	----

## 09 Slide Scanner

Digital Automatic Slide Scanner	62
---------------------------------	----

## 10 Storage Cabinets

Slide Storage Cabinets (vertical)	63
Slide Storage Cabinets (horizontal)	64
Vertical Slide Storage Cabinet	65
Block Storage Cabinets	66

## 11 Laboratory Equipments

Water Bath analog & digital	67
Hot air Oven analog & digital	68

## 12 Knife Sharpeners

Automatic Razor Sharpener	69
Electrical Knife Sharpener	70

## 13 Histopathology Accessories

Tissue Cassettes Stainless Steel	71
Plastic Staining Jars	71
Glass Staining Jars	71
Trimming Knives	72
Handle for Trimming Knives	72
Disposable Microtome Blades	72
Wax Trimmer	73
Blade Holder for Disposable Blades	73
Microtome Razor	73

## 14 Analytical Instruments

Projection Microscope	74
Fibre Pro Software	75
Refractometer	76
Moisture Meter	77
Polarimeter	78
Table Top Magnifier	79
Table top Magnifier Portable	80

Established in 1974 as Histopathology division MEDIMEAS having more than 48 years of experience has laid a firm foundation of expertise and excellence on which all Histopathologists rely for optimum specimen preparation and diagnosis.

The International standard quality system assures highest level of product performance and safety. With a network of fully trained marketing agents MEDIMEAS provides full after sale service and support second to none. The name MEDIMEAS stands synonymous with the ultimate in precision, quality and reliability.

Our vision is to make Histology accessible for all.



Best Microscope  
Manufacturer Award



Bhartiya Udyog Ratan Award





# Our Certifications

USFDA Approved, WHO-GMP Complied, ISO 13485, ISO 9001:2008

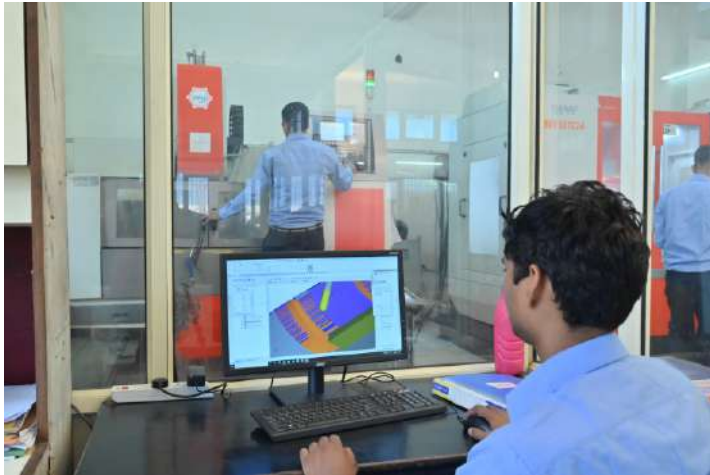


## CE Approved Product Range



# World Class Facility

Manufacturing World Class Products



Inhouse Designing  
and R&D



Fully Automatic CNC based  
Manufacturing Setup







Dedicated Skilled Workforce



Stringent QC with inhouse CMM for inspection



Zero Tolerance Final Inspection



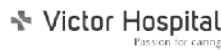
# Happy Customers



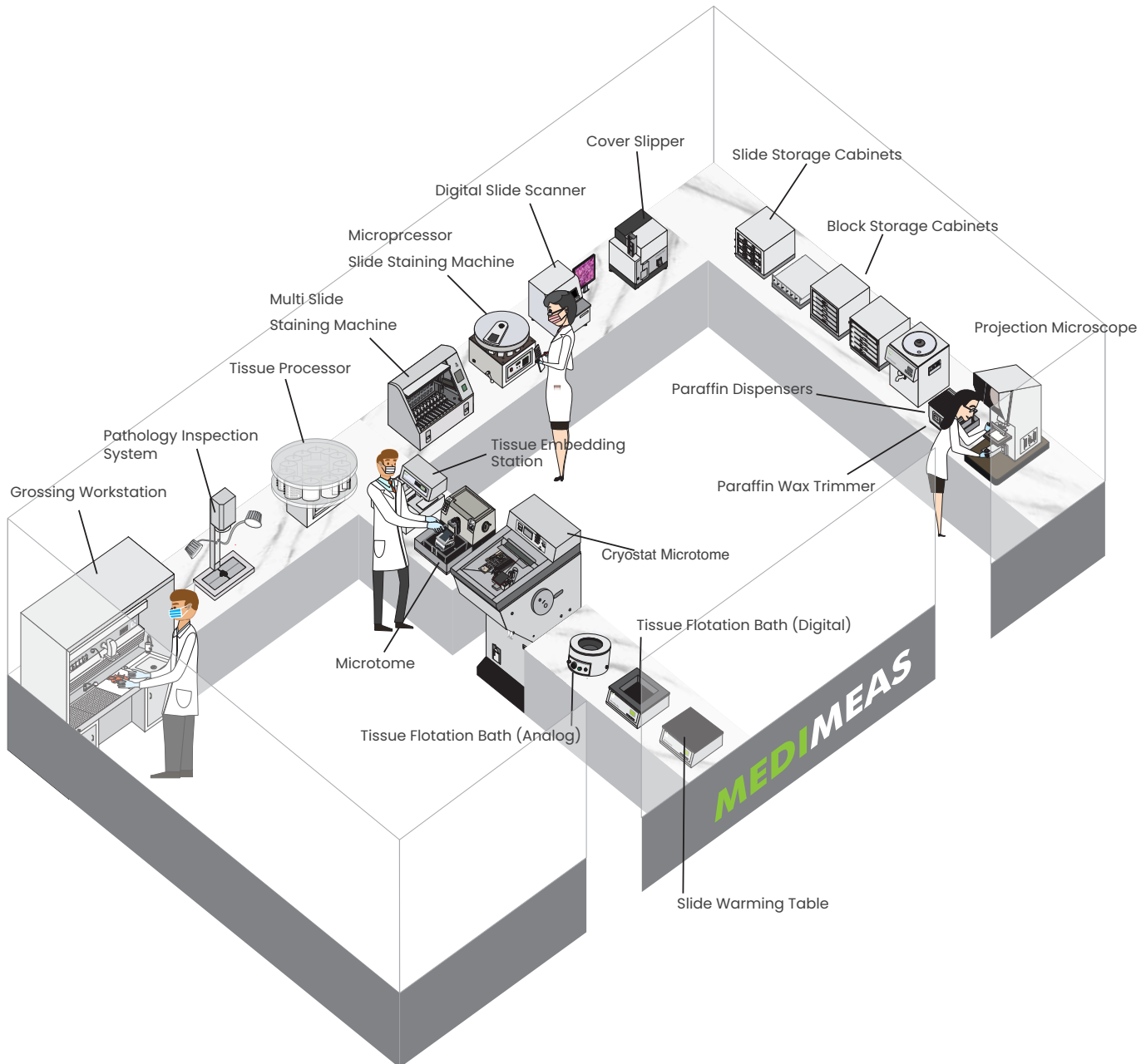
# 7500+USERS

DELIGHTED

All Across the globe



# Complete Histopathology Lab Solution





# Microtomes

Rotary Microtome

Rotary Microtome with Retraction

Semi Automatic Microtome

Fully Automatic Microtome

Manual Rotary Microtome



# Rotary Microtome

The Microtome has a **low maintenance** precision micrometer feed system and **cross roller guides** are **maintenance free**

## MRM-RM at a glance

- High precision specimen feed
- Based on cross roller guides which ensures **vibration free sectioning**
- Ergonomically located handwheel for coarse advance
- Blade holder suitable for both low/high profile blades
- Lateral adjustment of knife ensures the entire width of the blade is used
- Smooth running handwheel lockable at any position
- Supplied with both universal specimen & cassette clamp



Rigid & Rust Proof  
Construction



Lateral Knife  
Adjustment



Adjustable Clearing  
Angle



Specimen  
Orientation



Lockable Hand Wheel  
at any position



# Rotary Microtome

MRM-RM



---

## Section Thickness Setting

0.5-60  $\mu\text{m}$

## Setting Value

0.5 $\mu\text{m}$  - 2 $\mu\text{m}$  in 0.5 $\mu\text{m}$  increments

2 $\mu\text{m}$  - 20 $\mu\text{m}$  in 1 $\mu\text{m}$  increments

20 $\mu\text{m}$  - 60 $\mu\text{m}$  in 5 $\mu\text{m}$  increments

## Vertical Stroke

60mm

## Specimen Orientation

Horizontal 8°, Vertical 8°

## Object Feed

28mm

## Max. Sectioning Area

60mm  $\times$  50 mm

## Working Height (Knife Edge)

105mm

## Dimensions

W 38cm  $\times$  D 60cm  $\times$  H 33cm

## Weight (without acc.)

23Kg. (Approx)

# Rotary Microtome

with Retraction

New manual rotary microtome with retraction and trimming modes

## MRM-R-RM at a glance

- Specimen Retraction
- Trimming Mode
- Handwheel lockable at any position
- Counter Balanced Handwheel
- Adjustable knife angle
- Lateral adjustment of knife ensures the entire width of the blade is used
- Based on cross roller guides which ensures vibration free sectioning
- Smooth running handwheel lockable at any position
- Supplied with both universal specimen & cassette clamp



Rigid & Rust Proof  
Construction



Specimen Retraction



Adjustable Clearing  
Angle



Trimming Mode



Lockable Hand Wheel  
at any position

# Rotary Microtome

with Retraction

MRM-R-RM



---

## Section Thickness Setting

0-60  $\mu\text{m}$

## Trimming Thickness

15 $\mu\text{m}$  and 35 $\mu\text{m}$  steps

## Vertical Stroke

70mm

## Specimen Orientation

Horizontal 8°, Vertical 8°

## Object Feed

30mm

## Specimen Retraction

Yes

## Max. Sectioning Area

60mm  $\times$  50 mm

## Dimensions

W 50cm  $\times$  D 57cm X H 30cm

## Weight (without acc.)

35Kg. (Approx)

# Semi-Automatic Microtome

Semi-Automatic Microtome with precision **stepper motor** and a micro step drive to ensure **accurate specimen** advance.

## MRM-ST at a glance

- Imported motorized feed drive for uniform and precise sectioning
- Based on cross roller guides which ensures vibration free sectioning
- LCD Display with Feather Touch keypad
- Section Counter/Section Thickness Display
- Increase/Decrease Section Thickness
- Retraction can also be adjusted
- Blade holder suitable for both low/high profile blades
- Finger Protection Guard
- Smooth running handwheel lockable at any position
- Supplied with both universal specimen & cassette clamp



Smart Located  
Control Panel



Motorized Feed Drive



Lateral Knife  
Adjustment



Adjustable Retraction  
Value



Spacious Waste  
Tray

# Semi-Automatic Microtome

MRM-ST



---

## Section Thickness Setting

0.5-100  $\mu\text{m}$

## Setting Value

0.5 $\mu\text{m}$  - 5 $\mu\text{m}$  in 0.5 $\mu\text{m}$  increments

5 $\mu\text{m}$  - 20 $\mu\text{m}$  in 1 $\mu\text{m}$  increments

20 $\mu\text{m}$  - 60 $\mu\text{m}$  in 5 $\mu\text{m}$  increments

60 $\mu\text{m}$  - 100 $\mu\text{m}$  in 10 $\mu\text{m}$  increments

## Trimming Thickness Setting

1 $\mu\text{m}$  - 600 $\mu\text{m}$

## Specimen Retraction Range

5-100 $\mu\text{m}$  in 5 $\mu\text{m}$  increment  
(can be deactivated)

## Minimum Setting Value

0.5 $\mu\text{m}$

## Object / Horizontal Feed

28mm

## Vertical Stroke

60mm

## Max. Specimen Size

50 × 50 mm

## Remote Control

Optional

## Dimensions (mm)

With tray: W 480 × D 620 X H 340

Without tray: W 480 × D 515 X H 340

# Fully-Automatic Microtome

Fully-Automatic Microtome have powerful sectioning motor with **adjustable speed** which enable us to **cut the hard specimens**.

## MRM-AT At A Glance

- Motorized feed and sectioning
- Imported motorized feed drive for uniform and precise sectioning
- Based on cross roller guides which ensures vibration free sectioning
- LCD Display with Feather Touch keypad
- Section Counter/Section Thickness Display
- Increase/Decrease Section Thickness
- Retraction can also be adjusted
- Blade holder suitable for both low/high profile blades
- Finger Protection Guard
- Emergency Stop Button
- Smooth running handwheel lockable at any position
- Supplied with both universal specimen & cassette clamp



Motorized Sectioning  
with Speed Control



Precise Specimen  
Advance



Adjustable Clearance  
Angle



Specimen Retraction



Spacious Storage  
on the top

# Fully-Automatic Microtome

MRM-AT



---

## Section Thickness Setting

0.5-100 $\mu$ m

### Setting Value

0.5 $\mu$ m - 5 $\mu$ m in 0.5 $\mu$ m increments  
5 $\mu$ m - 20 $\mu$ m in 1 $\mu$ m increments  
20 $\mu$ m - 60 $\mu$ m in 5 $\mu$ m increments  
60 $\mu$ m - 100 $\mu$ m in 10 $\mu$ m increments

### Object / Horizontal Feed

28mm

### Specimen Retraction

5-100 $\mu$ m in 5 $\mu$ m increment  
(can be deactivated)

### Minimum Setting Value

0.5 $\mu$ m

### Sectioning Mode

6

## Trimming Thickness Setting

1 $\mu$ m - 600 $\mu$ m

### Setting Value

1-10 $\mu$ m in 1 $\mu$ m increments  
10-20 $\mu$ m in 2 $\mu$ m increments  
20-100 $\mu$ m in 10 $\mu$ m increments  
100-600 $\mu$ m in 50 $\mu$ m increments

### Vertical Stroke

70mm

### Max. Specimen Size

50 × 50 mm

### Remote Control

Optional

### Dimensions (mm)

With tray: W 480mm x D 620mm X H 340mm  
Without tray: W 480mm x D 515mm X H 340mm



# Manual Rotary Microtome

Front located feed indicator with **CAM DRIVE SYSTEM**. Razor is fabricated from imported fine grain steel alloy, tested for micro structures and **the razor is heat treated** to maintain optimum strength and **sharpness**.

## MRM-1120 SERIES at a glance

- Conveniently located feed indicator
- Convenient specimen holder
- Smooth drive wheel with locking
- Protective cover for easy cleaning
- Sturdy, rigid construction for shake proof operation
- Accurate specimen advance
- Safety device
- Minimal maintenance
- Accept attachment for disposable blade



Stable & Rigid  
Knife Holder



Lockable Hand Wheel



Safety Mechanism



Optional Disposable  
Blade Holder



Conveniently located  
Feed Indicator



# Manual Rotary Microtome

MRM-1120 Series



MRM-1120



MRM-1120 A

---

**Section Thickness Setting**  
1–50  $\mu\text{m}$  in steps of  $1\mu\text{m}$  increment

**Knife Length: Standard**  
120mm

**Knife Length: Optional**  
140mm/160mm

**Operation**  
Manual

**Block (Specimen) Holder**  
Set of Three

**Object Feed**  
Manual

**Vertical Specimen Stroke**  
55mm

**Max. Specimen Size**  
32mm (Section)

**Specimen Orientation**  
360°

**Knife Angle**  
0 to 10°

**Razor Holder Grip**  
Single / Dual

**Adjustment with locks**  
Provided

**Disposable Blade & Holder**  
Optional

**Dimensions**  
300×300×240 mm

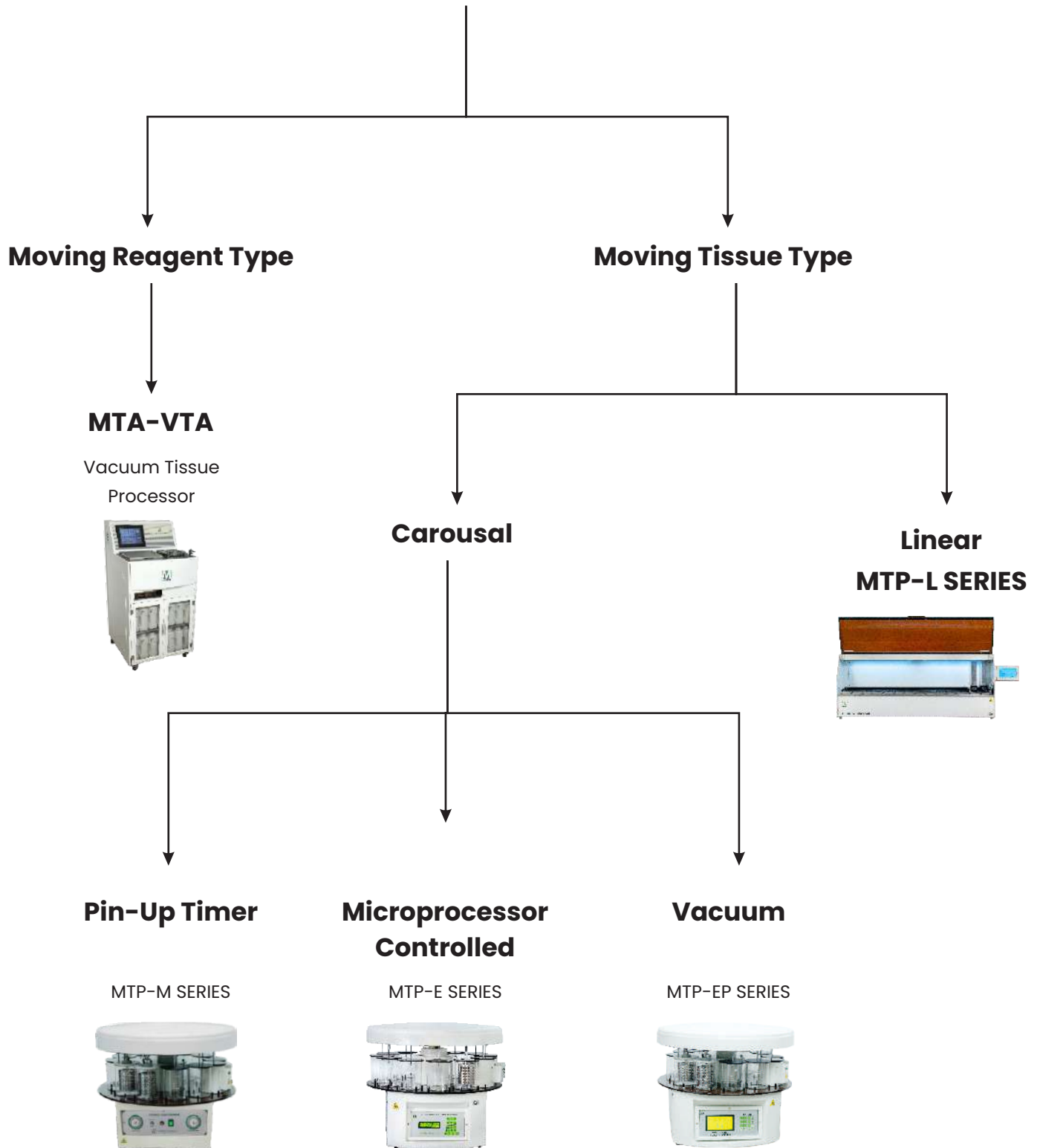
**Weight**  
32 to 35 kgs

# Tissue Processing

Automatic Tissue Processor Pin-up Timer Based  
Automatic Tissue Processor Microprocessor Based  
Linear Tissue Processor  
Vacuum Tissue Processor



# Tissue Processor



# Tissue Processor

## Pinup Timer Based

The programming time and the delay time can be **easily programmed** with the help of timers.

### MTP-M SERIES At A Glance

- Silent and smooth motor and gear operation
- Stainless steel tissue baskets and cassettes
- Standard over temperature cutoff safety feature
- 2 thermostatically controlled wax bath from ambient to 75°C
- 24 tissue containers (Cassettes)
- With or Without Safety Device
- 1 or 2 Stainless steel Basket Rotors
- Delay action of 24 Hours
- Programmable 12 Stage timing sequence
- 10 without lip glass beakers (½ ltr, 1 ltr or 2 ltr.)



Pin Up Timer



Delay Timer



Minimum Reagent  
Carry Over



Basket Rotation



Thermostatically  
Controlled Wax bath

# Tissue Processor

## Pinup Timer Based

MTP-M Series



	M111	M112	M211	M212
Operation	Automatic	Automatic	Automatic	Automatic
S.S Basket	1	2	1	2
Beaker Capacity (ltr.)	1	1	2	2
No. of Beakers	10	10	10	10
Tissue Processing Cap.(Cassettes)	30	60	60	120
Wax Baths	2	2	2	2
Wax Bath Capacity (ltr.)	1	1	2	2
Temperature Range	0 to 85°C Adjustable			
Safety Device	Yes			
Dimensions(cm)	W 74 X D 74 X H 64 (1ltr.)		W 84 x D 84 X H 64 (2ltr.)	

# Tissue Processor

## Microprocessor Based

MTP-E Series automatic tissue processors are **microprocessor** based, on which **programming time and the delay time** can be easily programmed.

### MTP-E SERIES At A Glance

- Feather touch key pad
- Digital LCD display for adjusting time sequence
- Battery backup to retain data
- 12 stage timing sequence can be programmed with each step of 1 minute to 16 hours 39 minutes (999 min.)
- Delay action of 1 hour to 99 hours
- 1 or 2 Stainless Steel Basket
- 2 Electronically Controlled wax bath with imported temperature sensor
- Silent & smooth gear operation
- 10 without lip glass beakers
- 1 or 2 Stainless steel Basket Rotors (½ Itr, 1 Itr or 2 Itr.)



Microprocessor based  
LCD Display



Wax Bath with  
over heat protection



Agitation Through Rotor  
for better  
tissue processing



Covered Reagent  
Beakers to minimize  
evaporation



Battery backup to  
retain data in  
case of battery failure

# Tissue Processor

## Microprocessor Based

MTP-E Series



	E111	E112	E211	E212
Operation	Microprocessor Controlled			
S.S Basket	1	2	1	2
Beaker Capacity (ltr.)	1	1	2	2
No. of Beakers	10	10	10	10
Tissue Processing Cap.(Cassettes)	30	60	60	120
Wax Baths	2	2	2	2
Wax Bath Capacity (ltr.)	1	2	2	2
Temperature Range	0 to 75°C Adjustable			
Safety Device	Yes			
Fume Control System	Optional			
Dimensions(cm)	W 74 X D 74 X H 64 (1ltr.)		W 84 x D 84 X H 64 (2ltr.)	



# Tissue Processor

## Microprocessor Based

MTP-EP Series latest **microprocessor based** comes with **multiple program memory**. It also has an **optional vacuum** system with **vacuum selectable** for both reagent stations and wax bath.

### MTP-EP SERIES At A Glance

- Feather touch keypad and a large size graphical LCD display
- Digital display for adjusting time sequence
- Battery backup to retain data
- Programming of timing sequence
- Stainless steel basket rotor & basket
- 1 or 2 Stainless Steel Basket
- 2 Electronically Controlled wax bath with imported temperature sensor
- Silent & smooth gear operation
- 10 without lip glass beakers
- 1 or 2 Stainless steel Basket Rotors (½ ltr, 1 ltr or 2 ltr.)



Silent & Smooth Operation



Large LCD Display with multi programmable memory



Agitation Through Rotor for better tissue processing



Optional: Vacuum for Reagent & Wax Baths



Wax bath with over heat protection for tissue safety



# Tissue Processor

## Microprocessor Based

MTP-EP Series



	MTP-EP-111/112	MTP-EP-211/212
Operation	Moving Tissue Type	Moving Tissue Type
Tissue Processing Cap.(Cassettes)	30/60	60/120
Beaker Capacity (ltr.)	1	2
No. of Beakers	10 / 9	10 / 9
No. of Programs	20	20
Wax Baths	2 / 3	2 / 3
Infiltration Time	upto 99 hr 59 min	
Temperature(Paraffin)	ambient to 80°C	
Vacuum(optional)	Yes (0.053mpa)	
Delay Start	upto 9 Days	
Fume Exhaust Fan	Optional (With active Charcoal Filter)	

# Tissue Processor Linear

Enclosed compact **bench top unit** with user friendly software. The **lowering and lifting** of a tissue basket is **smooth** and noiseless. All the reagents are covered when not in use to **minimize loss due to evaporation**.

## MTP-L SERIES At A Glance

- Multi-programmable
- Easy to use touch screen control panel
- Inbuilt fume control system
- Programmable drain time and agitation time
- 2 separate program can be run at a time in double basket operation
- Minimum reagent loss



Large Touch Screen  
Display



Silent & Smooth  
Operation



Agitation for better  
tissue processing



Enclosed Hood  
with exhaust fan  
for fume control



Simultaneous  
running of two  
different protocols

# Tissue Processor Linear

MTP-L Series



	L111	L211	L112	L212
Operation	Microprocessor Controlled			
Tissue Processing Capacity	60	120	160	240
No of Reagent Stations	9	9	10	10
Reagent Station Capacity	1000ml	2000ml	1500ml	2000ml
Paraffin Station	3	3	4	4
Paraffin Station Temp. Range	ambient to 99°C			
No. of Stored Programs	20 programs			
Processing time in each Station	1min. to 99hrs.			
Battery Backup for Data	Yes			
Safety Device	Yes			

# Tissue Processor

## Vacuum with Touch Screen Display

MTP-VT is a floor standing model with all the reagents are covered when not in use to **minimize loss due to evaporation.**

### MTP-VT SERIES At A Glance

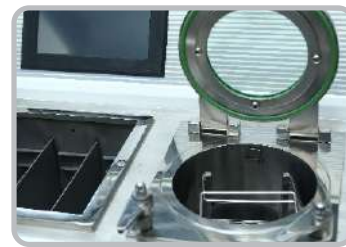
- Simultaneous processing of upto 200 cassettes
- High quality specimen processing
- Fully automatic reagent management system
- Comprehensive monitoring and full process control
- Reagent Level Alarm
- One touch start of pre saved programs
- Agitation in retort
- Automatic/Manual running modes
- Warning alarm for trouble free operation
- Optional Automatic fill and drain reagent system



High Quality  
Specimen



Optimum Reagent  
Usage



Agitation



Reagent  
Management System



Touch Screen Display

# Tissue Processor

## Vacuum with Touch Screen Display

MTP-VT



---

### PROCESSING RETORT

**Maximum Capacity**

200/300 cassettes

**Temperature Paraffin**

65°C

**Pressure**

+35kPa

**Retort Material**

Stainless Steel

**Temperature Reagent**

Ambient or 35°C

**No. of Programs**

20

**Processing Retort Volume**

5.3 ltrs.

**Vacuum**

-70kPa

### PARAFFIN BATHS

**No. of Baths**

3

**Volume**

4ltrs. each

**Average Melting Time**

3hrs. approx

### REAGENT BOTTLES

**No. of Bottles**

9

**Bottle Volume**

4ltrs. each

# Tissue Processor

## Manual

**MTP 20** Tissue Processing Unit has a sturdy stainless steel tissue basket, one rotor and 12 tissue cassettes complete with thermostatically controlled wax bath and two one litre beakers

### Salient Features

- Improved Design
- Available in 1/2 ltrs
- Agitation System
- Increased Capacity
- Multiple Wax Bath Station
- Safety Device



---

### Operation

Manual

### S.S. Basket

1

### Basket Rotor

1

### Temperature Range °C

0-85

### Beaker Capacity

1/2 ltr

### No. of Beakers

2/3/5

### Tissue Cassettes

12

### Temperature Cutout °C

60

### Tissue Cassette Size (Dia)

36mm

### Wax Baths

1

### Wax Bath Capacity (Ltr.)

1

### Dimension (in mm)

300×250×350

# Tissue Embedding Station

Tissue Embedding Station

Tissue Embedding Station with Peltier

Cold Plate

Tissue Embedding Station with Touch Screen





# Tissue Embedding Station

MTC-TE-SERIES Tissue Embedding Center with 5 independent heating zones that are controlled through a microprocessor.

## MTC-TE At A Glance

- Large paraffin tank suitable for high throughput lab
- Each heating zones temperature can be individually set.
- **Separate heating zones for:**
  - Storage tank
  - Mold Warmer/Cassette Bath
  - Paraffin nozzle
  - Forceps holder
  - Work platform
- Excess paraffin collecting tray

## MTC-CP At A Glance

- Stand alone unit or with the tissue embedding station.
- It has environmental friendly refrigerant.
- Chilling area for approx. 60-80 cassettes.
- Temperature range: Ambient to -20°C



Weekly Programmable  
ON/OFF



Large Paraffin Tank



Optional Peltier  
Cooling Spot



Illuminated Large  
Working Platform



Mold Warmer &  
Cassette Bath



# Tissue Embedding Station



MTC-TE-P



MTC-CP

---

## Setting Temp. Range

ambient to 99°C

## Volume of the paraffin

3 ltrs. or 5 ltrs.

## Volume of the preservation box

228×148×50 mm X 2

## Peltier Cold Spot

Only with MTC-TE-P

## Weekly Programmable

Yes (ON/OFF Timings)

## Work area

200 x 100 mm

## Cold Plate Capacity

60-80 Cassettes

## Cold Plate Temp. Range

ambient to -20°C

# Tissue Embedding Station ( Touch Screen Display)

It has a **large storage tank**, the tank incorporates the filter which ensures continuous flow of paraffin from the tank. The **flow of paraffin** from the tank can be **controlled manually or through foot switch**.

## MTE-TS At A Glance

- Illuminated Work Platform
- Weekly programmable for both ON/OFF timings
- Adjustable Paraffin Flow Rate
- Magnifier to view to the embedding area
- Integrated Cold Spot
- Spacious mold warmer and cassette bath
- Large heated work platform

## MTC-CS At A Glance

- Stand alone unit or with the tissue embedding station.
- It has environmental friendly refrigerant.
- Chilling area for approx. 80 cassettes.



Touch Screen Panel  
Weekly Programmable



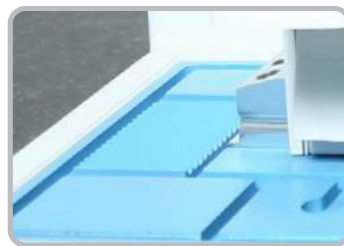
Large Paraffin Tank  
(6 Itrs.)



Adjustable  
Paraffin flow



Mold Warmer and  
Cassette Tray



Integrated Paraffin  
Trimmer

# Tissue Embedding Station ( Touch Screen Display)



MTE-TS

MTC-CS

---

## Setting Temp. Range

ambient to 99°C

## Volume of the paraffin

6 ltrs.

## Mold Warmer

Yes

## Peltier Cold Spot

Yes

## Cassette Bath

Yes

## Weekly Programmable

Yes

## Cold Plate Capacity

80-100 Cassettes

## Cold Plate Temp. Range

ambient to -6°C

# Accessories

## Embedding Cassettes

These rigidly constructed disposable cassettes are made of high density polymer that is resistant to solvents used in tissue processing. These are available in multiple colors for easy classification of different type of specimen in a histopathology lab.

Size: 40x27x7 mm



MTEC

## Embedding Moulds

MEDIMEAS embedding moulds are made up of stainless steel provided better conductivity and faster cooling, high polished surface and rounded corner for easy block removal.

**Available in following sizes:**

7x7x6mm, 15x15x6mm, 24x24x6mm, 30x24x6mm,  
37x24x6mm, 7x7x9mm, 15x15x9mm, 24x24x9mm,  
30x24x9mm, 37x24x9mm



MEM

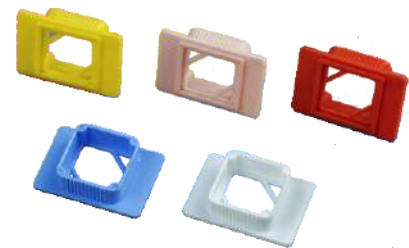
## Embedding Rings

Embedding Rings are used together with base moulds to create a specimen paraffin block.

The etched marking surface allows for display of sample identification throughout the process. These are chemically inert and are made from high-impact material for dimensionally rigidity and sturdiness.

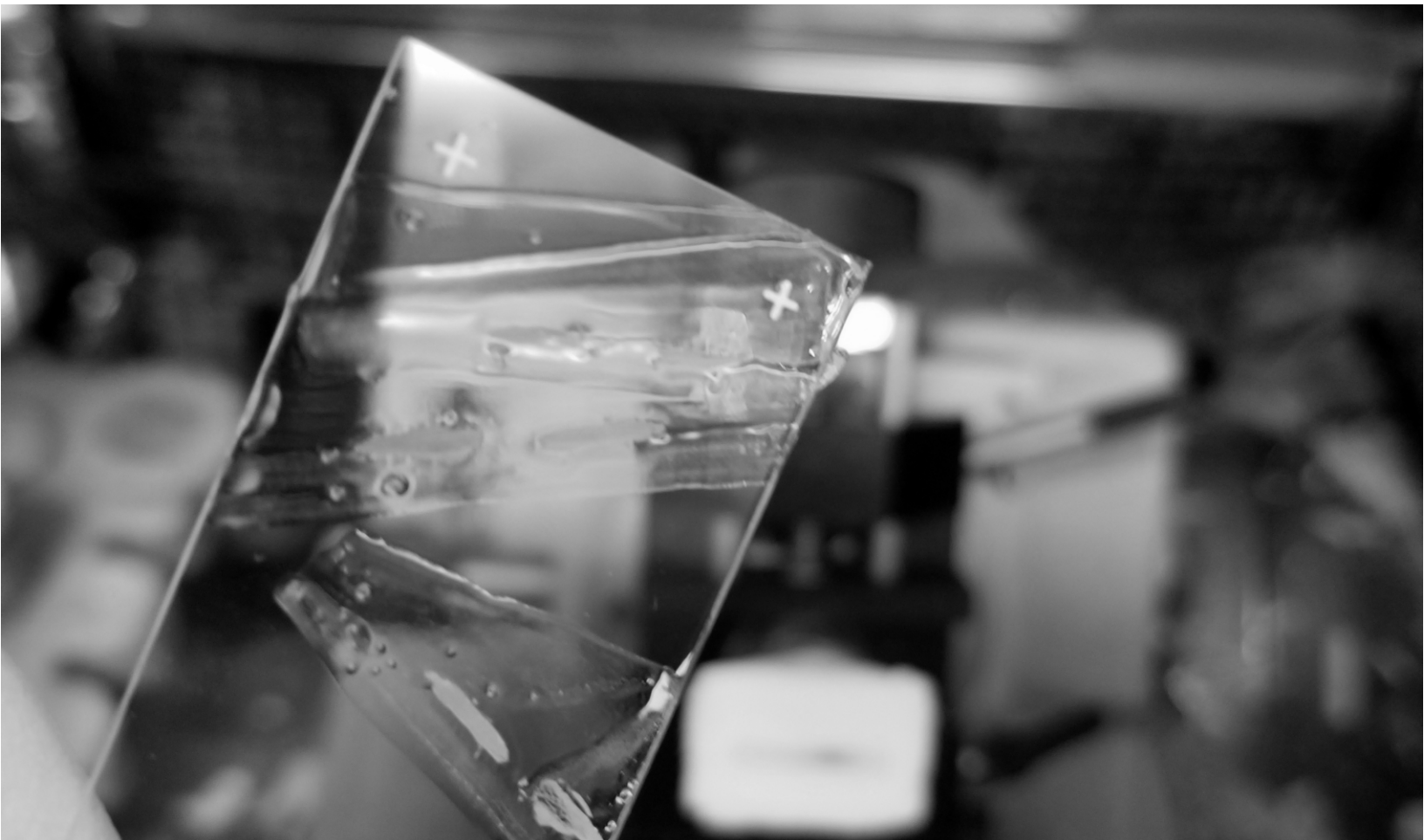
**Available in different colors:**

White, Pink, Red, Blue etc.



MER

# Cryostat Microtome



# Automatic Cryostat Microtome (Motorized Feed)

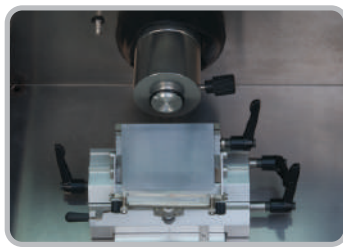
Cryostat Microtome has a spacious cryochamber with chamber illumination to have clear visibility during sectioning

## MCM-MT series at a glance

- Spacious, Stainless Steel Cryochamber
- Specimen Retraction
- Section thickness setting with the help of keypad
- Electrically heated window to prevent frost formation
- Motorized Feed Drive
- Chamber Illumination
- LCD display with feather touch keypad
- Uniform and precise temperature control



Real Time  
Temperature Display



Microtome Assembly  
outside the Chamber



Frost Free Window



Quick Specimen  
Freezing



Uniform and precise  
temperature control



# Automatic Cryostat Microtome (Motorized Feed)

MCM-MT



---

## Temperature Setting Range

0 to -30°C

## Section Thickness Setting

1-30 µm in step of 1 µm each

## Operation

Manual

## Specimen Size (Section)

30mm × 30mm

## Horizontal Specimen Feed

20mm

## Vertical Specimen Stroke

60mm

## Specimen Retraction

Yes

## Chamber Illumination

Yes

## Motorised Forward/Backward

Yes

## Knife Holder Adjustments

Adjustable

## Knife Length

120mm/140mm

## Disposable Blade Holder

Optional

## Refrigeration

Hermetically sealed & Thermostatically Controlled

# Automatic Cryostat Microtome (Motorized Feed)

**MEDIMEAS** Cryostat Microtome with dual compressor and fully programmable for ON/OFF time, defrost etc.

## MCM-ST series at a glance

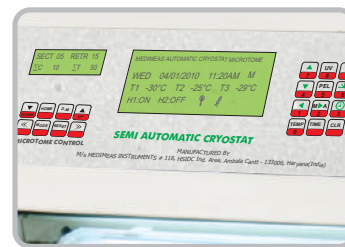
- Motorized Feed Drive
- Microtome Assembly outside the Freezing Chamber
- Section Counter
- UV-C Sterilization
- Dual Compressor for Rapid Freezing
- Visible Operating parameters at all times
- Adjustable Cutting Angle
- Automatic and Manual Defrosting
- Enclosed Drainage System



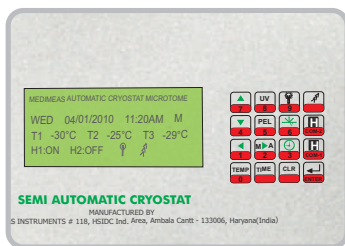
Real Time Temperature Display



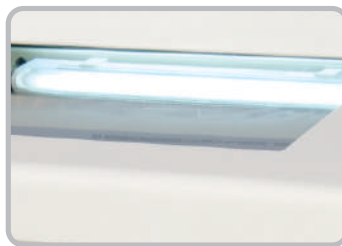
Microtome Assembly outside the Chamber



Programmable ON/OFF, Defrost etc.



Large LCD display with feather touch keypad



UV-C Disinfection

# Automatic Cryostat Microtome (Motorized Feed)

MCM-ST



**Section Thickness Range**

1 - 60µm  
 Increment Range\*  
 1 - 10µm in 1µm increments  
 10 - 20 µm in 2µm increments  
 20 - 60µm in 5µm increments

**Trimming Thickness Range\***

10 - 300µm in 10µm increments

**Maximum Specimen Size**

35 x 35 mm

**Horizontal Specimen Feed**

25mm

**Vertical Specimen Stroke**

65mm

**UV sterilization**

Yes

**Motorized Coarse Feed**

300 & 900 µm/sec.

**Specimen Retraction**

5-75µm in 5µm increments

**Specimen Orientation**

8° (X,Y axis)

**Compressor**

Single/Double

**Cryo Chamber Temp.**

-1 to -30°C Adjustable

**Quick Freeze Shelf**

≤ - 50°C

**Lowest Temp. of Peltier Unit**

-50°C

**No. of Freezing Stations**

10

**Cooling Downtime to -30°C**

60 mins.

**Peltier**

Optional

**Dimensions(with wheel)**

W 80cm x D 66cm X H 120cm

# Automatic Cryostat Microtome

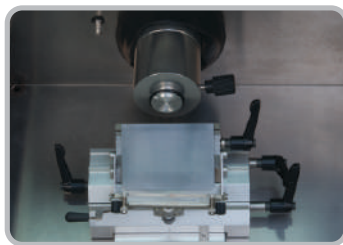
Fully-automatic Cryostat Microtome (Dual Compressor)  
fully programmable for ON/OFF time, defrost, with motorized sectioning etc.

## MCM-AT series at a glance

- Motorized Feed Drive
- Microtome Assembly outside the Freezing Chamber
- Section Counter
- UV-C Sterilization
- Dual Compressor for Rapid Freezing
- Visible Operating parameters at all times
- Adjustable Cutting Angle
- Automatic and Manual Defrosting
- Enclosed Drainage System



Sectioning Speed  
Control



Disposable Blade  
Holder



Specimen Holder  
Cooling



Quick Specimen  
Freezing



Programmable  
ON/OFF, Defrost etc.

# Automatic Cryostat Microtome

MCM-AT



---

## Section Thickness Range

1 - 60  $\mu\text{m}$

### Increment Range\*

1 - 10  $\mu\text{m}$  in 1  $\mu\text{m}$  increments

10 - 20  $\mu\text{m}$  in 2  $\mu\text{m}$  increments

20 - 60  $\mu\text{m}$  in 5  $\mu\text{m}$  increments

## Trimming Thickness Range\*

10 - 300  $\mu\text{m}$  in 10  $\mu\text{m}$  increments

## Maximum Specimen Size

35 x 35 mm

## Horizontal Specimen Feed

25mm

## Vertical Specimen Stroke

65mm

## Quick Freeze Shelf

$\leq -50^{\circ}\text{C}$

## Motorized Coarse Feed

300 & 900  $\mu\text{m}/\text{sec}$ .

## Specimen Retraction

5-75  $\mu\text{m}$  in 5  $\mu\text{m}$  increments

## Specimen Orientation

8° (X,Y axis)

## Compressor

Single/Double

## Cryo Chamber Temp.

-1 to -30°C Adjustable

## No. of Freezing Stations

10

## Lowest Temp. of Peltier Unit

-50°C

## Cooling Downtime to -30°C

60 mins.

## Motorized Sectioning

Yes

## Dimensions (with wheel)

W 80cm x D 66cm X H 120cm

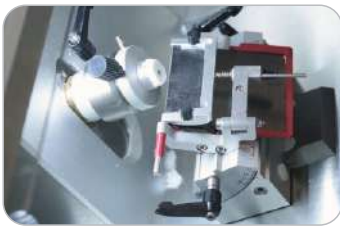
# Automatic Cryostat Microtome

with Touch Screen

Automatic Cryostat Microtome (touch Screen)  
based on cross roller guide ways and encapsulated microtome.

## MCM-STA series at a glance

- Low maintenance microtome with cross-roller guides.
- Inbuilt peltier unit for fast freezing with heat extraction
- High quality thin section via stepper motor specimen feed.
- Blade holder to accommodate both low & high profile blades
- Electrically heated window to prevent frost formation
- Adjustable anti roll device which prevent rolling & curling of sections



Microtome with cross roller guideways for vibration free sectioning



Accommodate both Low/High Profile Blades



Ergonomically located panel for faster specimen positioning



Easy to operate with self explanatory symbols



Programmable ON time, Sleep Time, Disinfection Time etc



# Semi-Automatic Cryostat Microtome

with Touch Screen

MCM-STA



---

## Section Thickness Range

0-100  $\mu\text{m}$

Increment Range\*

0 - 20  $\mu\text{m}$  in 1  $\mu\text{m}$  increments

20 - 50  $\mu\text{m}$  in 2  $\mu\text{m}$  increments

50 - 100  $\mu\text{m}$  in 5  $\mu\text{m}$  increments

## Trimming Thickness Range\*

1-600  $\mu\text{m}$  in 10  $\mu\text{m}$  in steps

## Maximum Specimen Size

55  $\times$  55 mm

## Horizontal Specimen Feed

25mm

## Vertical Specimen Stroke

60mm

## No. of Freezing Stations

20

## Motorized Coarse Feed

2 Speeds

## Specimen Retraction

0-200 $\mu\text{m}$  adjustable, in steps of 5 $\mu\text{m}$

## Specimen Orientation

12° (X,Y axis) 360° Z axis

## Cryo Chamber Temp.

0 to -35°C Adjustable

## Chamber Defrosting

Manual or Automatic

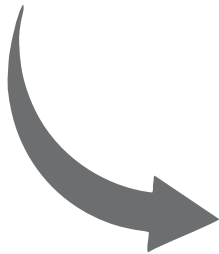
## Quick Freeze Shelf

- 50°C (both)

# Evolution of **MEDIMEAS** Cryostat Microtomes



1990



2010



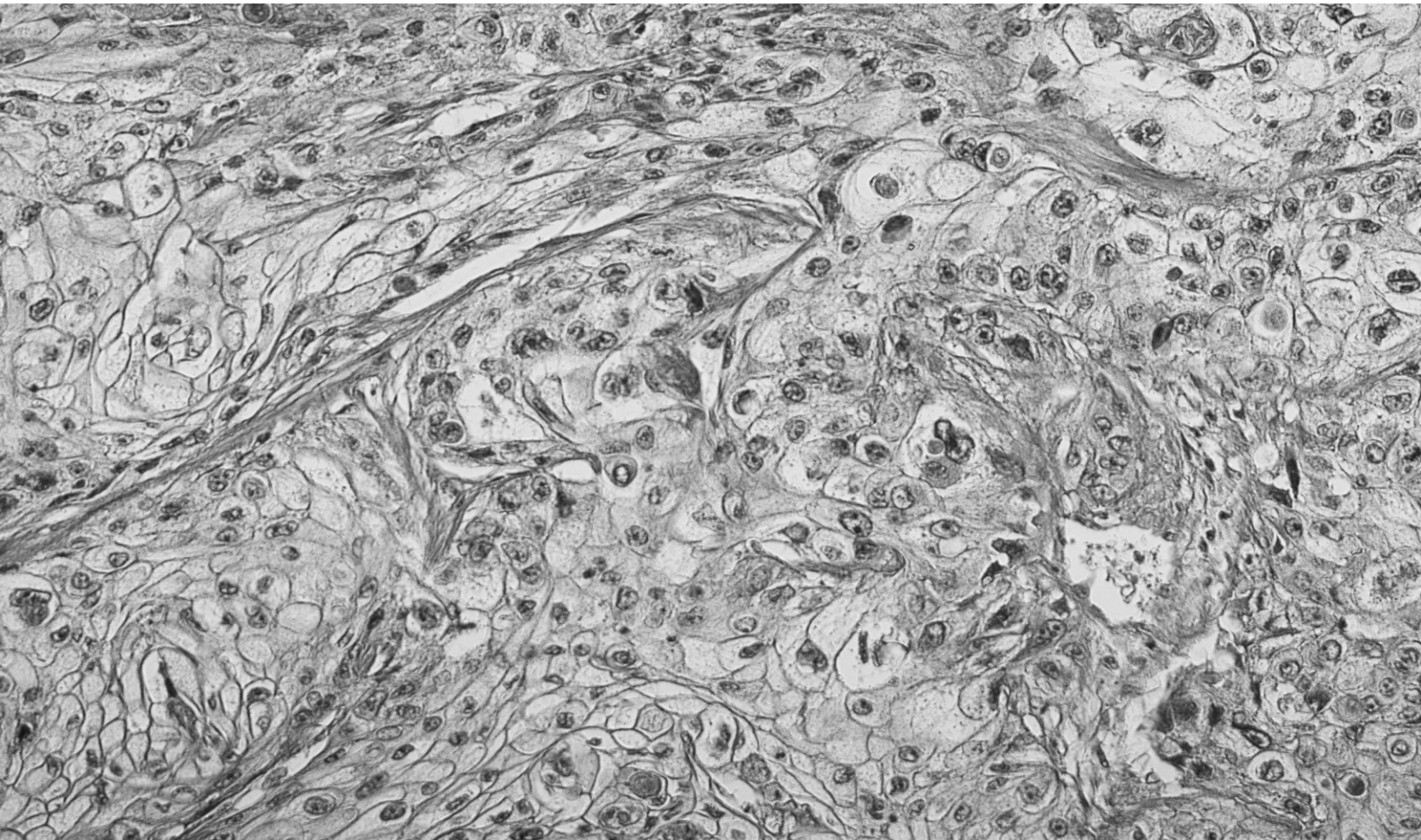
2018

# Slide Staining Machine

Automatic Slide Staining Machine

Linear Slide Staining Machine

Multi Slide Staining Machine



# Automatic Slide Staining Machine

MSS Series are **carousel type** slide staining machines.

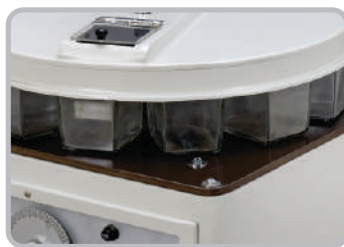
It is a microprocessor based slide staining machine with LCD display.

## MSS SERIES At A Glance

- Compact Bench Top Model
- Perfect H & E Stainer for Routine Application
- High Specimen Throughput
- Minimum Reagent Exposure
- Highly recommended for Haematology and also for staining of blood Films and bone marrow spreads



Programmable Staining Time



Silent & Smooth Operation



Slide Agitation



Easy accessibility



Lever for manual Lifting

# Automatic Slide Staining Machine

MSS-E12



---

## Operation

Microprocessor

## Staining Troughs

12

## Trough Capacity

20 Slides

## Trough Volume

450 ml

## Inlet/Outlet Volume

1

## Side Carriers

1

## Programmable Timing Sequence

1min to 59mins



# Linear Slide Staining Machine

The lowering and lifting of a slide carrier is **smooth and noiseless**. **Touch Screen LCD** with user friendly software. All the **reagents are covered** when not in use to minimize loss due to evaporation.

## MSS-AS SERIES At A Glance

- Integrated washing and drying station
- Ideal solution for H&E, PAP staining and other special stain
- Multi-programmable as user can same different staining protocols
- Easy to use with Touchscreen display
- Agitation for better staining



Silent & Smooth  
Shifting



Fume Extraction  
System



Touch Screen  
Operation



Programmable  
Staining Times



Integrated Washing  
and Drying Stations



# Linear Slide Staining Machine

MSS-AS



---

## Slide Staining Capacity

72 slides

## No. of Cylinder

14

## Slide Wash Station

Yes

## Cylinder Capacity

1000 ml

## Slide Dryer

Yes

## Infiltration Time

1sec to 59min 59sec

## Programmable Memory

20 Programs

## Chamber Illumination

Yes

## Exhaust Fan

Yes

## Agitation

Yes

## Dimensions (without foldable screen)

W 115cm x D 43cm X H 47cm

# Multi Slide Staining Machine

MSS-LS is a **high performance** machine that can **stain upto 200 slides in an hour**, making it indispensable for high throughput laboratories.

## MSS-LS SERIES At A Glance

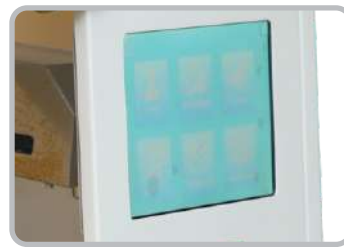
- Multiple loading capacity upto 5 slide racks
- User friendly touch screen display
- 10 program memory
- Inbuilt fume extraction system
- Silent and smooth motor operation
- Easy loading and unloading of slides
- Fume control system with active charcoal filter
- Continuous loading and unloading of slides
- Ideal solution fo H&E, PAP and other special stains.



Multiple Slide  
Loading



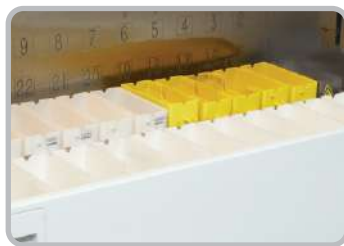
Fume Extraction  
System



Touch Screen  
Operation



Slide Agitation



Integrated Washing  
and Drying Stations

# Multi Slide Staining Machine

MSS-LS



---

## No. of Stations

26

## No. of Reagent Stations

18

## No. of Stored Programs

10, Freely programmable

## Slide Staining Capacity

upto 150 slides in one load

## Single Rack Capacity

Slides in one load 30

## Wash Stations

5

## Load Station

1

## Unload Station

1

## Reagent Station Volume

400ml

## Drying Station

1

## Dimensions

W 107cm × D 58cm X H 62cm

# Paraffin Dispenser

Microprocessor Based

It has a fully automatic procedure and memory function to store the set temperature, displays the current heating state of the dispenser makes it easy to use. It also prevents the blockage due to solid or semi-solid wax in the nozzle.

## M-PD At A Glance

- Feather touch keypad with LCD display
- 2 heating zone one for paraffin tank and one for tap to prevent any blockage
- Stainless Steel Inner tank with filter to prevent foreign bodies entering wax module
- Inbuilt memory to store set temperature
- The nozzle is fitted with temperature control so that the free flow of wax is maintained.



Temperature  
Control for nozzle



SS Tank with Filter



LED display with  
keypad



Adjustable Paraffin  
Flow Tap

# Paraffin Dispenser

M-PD



---

## Operation

Microprocessor based

## Tank Temperature Range

ambient - 99°C

## Temperature Range Tap/Nozzle

ambient - 100°C

## Temperature Tolerance

± 2°C

## Capacity

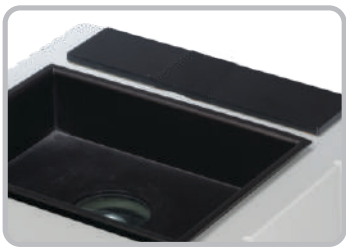
3L / 5L / 10L

# Digital Tissue Flotation Workstation

Display for independently setting the water bath and hot plates temperatures.  
Inbuilt memory to store the last used temperature setting.

## M-TFW At A Glance

- High Contrast Background illuminated LED light
- Microprocessor Based
- Uniform and precise heating
- Removable Dish for easy cleaning
- Corrosion resistant material provides the required durability.
- Feather Touch keypad with LCD display



Integrated Warming  
Plate



Removable Bath  
with Illumination



LED display with  
keypad



# Digital Tissue Flotation Workstation

M-TFW



---

## Bath Temperature Range

ambient to 99°C

## Hot Plate Temperature Range

ambient to 99°C

## Temperature Tolerance

± 1°C

## Integrated Hot Plates

Yes

## Integrated LED for bath illumination

Yes

## Removable Tray

Yes

## Operation

Microprocessor Based

# Digital Slide Warmer

M-SWT

## M-SWT At A Glance

- Feather touch keypad with LED Display
- Precise temperature control
- In-built memory to store the set temperature.
- Uniform and precise heating
- Made up of corrosion resistance material to provides the required durability.



Microprocessor Based



Inbuilt Memory

---

## Temperature range

ambient to 99 °C

## Temperature Tolerance

± 1 °C

## Temperature Tolerance

335 X 255mm

# Analog Slide Warmer

Rectangular and used to heat slides at a uniform temperature just below the melting point of wax so as to provide flattening without any damage to the section. The top plate is securely mounted on a insulated metal base.



MSWT-A

---

## Temperature range

ambient to 90 °C

## Temperature Tolerance

± 1 °C

## Temperature Tolerance

12 X 10 inch

# Digital Tissue Flotation Baths

Microprocessor Based

M-TFB

## M-TFB At A Glance

- Feather touch keypad with LED Display
- Precise temperature control
- In-built memory to store the set temperature.
- Made up of corrosion resistance material to provides the required durability.



Microprocessor Based



Inbuilt Memory

---

## Water temperature range

ambient to 99 °C

## Temperature Tolerance

± 1 °C

## Water bath dimensions, inner (mm)

255 x 195 x 50 mm

# Analog Tissue Flotation Baths

This circular floatation bath is ideally suited for preparing of distortion less and wrinkle free tissue specimens. It is a double walled unit with inside made up of aluminum and outside MS sheet (duly painted).



MTFB-A

---

**Water temperature range**

ambient to 80 °C

**Temperature Tolerance**

± 1 °C

**Bath Volume (inch)**

10 x 5

# Grossing Work Station

Grossing Work Station with backdraft ventilation is made up of high grade stainless steel 304 with Continuous air flow along entire workarea to remove the formalin fumes.

## MGWS At A Glance

- Made up of high grade 304 Stainless Steel
- Inbuilt ventilation system for removing the formalin fumes
- Storage compartments on both sides
- Magnetic tool holder
- Sink with hot and cold water faucet
- High capacity waste disposal unit
- Polyethylene dissecting board with ruler and contrast area to easily see the biopsy.
- Sturdy perforated insert able work plate.
- Sprinkler system with adjustable valve for bath sanitation located underneath the perforated working plate & Drawers.
- Integrated Illumination for entire work area with additional spot light
- Storage shelf to keep the necessary tools in the reach of operators.



Sprinkler System For  
Complete Cleaning



Illumination With  
Uv Light & Spot Light



Sink With Hot &  
Cold Water Faucet



Laser Integrated Ruler



# Grossing Work Station

with optional camera software

MGWS



---

## Construction

High Grade Stainless Steel

## Ventilation

Backdraft

## Disinfection

UV light

## Design

Single User/ Double User

## Work Table Size

110 x 75 x 90 cms

## Overall Size

120×80×180cms

Note: The grossing workstation size can be made as per customer requirement.

# Pathology Inspection System

Grossing Software for Pathology Inspection can be used as a standalone Unit or can be integrated with any series of our grossing workstation.

## MPIS At A Glance

- Hd Camera With Led Illumination
- LCD Screen Monitor For Easy Operations
- Unlimited Data Record Of Patients
- Zoom-in/zoom-out Image Process
- Identification Mark On Tissue Measuring (line, Area, Free Tools, Rectangular, Circular)
- Unit Feature: mm/inch
- Easy To Use
- Video Recording
- Print Report



---

## Software Features

- Provides 2D measuring function to obtain the high accuracy measurement.
- Scale is adjustable to match the different magnification.
- Provides Edit, Save and Print function of the captured image.
- The measuring result can output to Excel for further edit.
- Provides formal report output function.

## Features of Work Station

- Work table comes with a ruler.
- Worktable is also acid and alkali resistant.
- Dimension of Work Table: 450X470mm

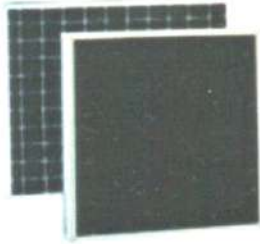
## Advantages

- Use in the final patient report
- Pathologist review
- QC

# Accessories

## Activated Carbon Filter

Grossing station can be supplied with replaceable type activated carbon filter to remove formalin fume.



## Magnifying Lamp

Magnifying lamp with illumination and adjustable arms helps the operator to focus on the specimen.



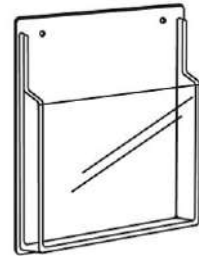
## Elevating System

Foot pedal operated elevating system.



## Document Holder

Various small accessories like Document Holder, C-fold Holder etc. can be integrated on the grossing workstation.



## Formalin Collection

The formalin dispensing and collection system can be made separate according to the customer requirement.



## Formalin Dispenser

The flow of formalin can be through tank on top or through the tank at the bottom with the pump operated through pedal.



## Led Monitor Mount

Optional LED mount for LED monitor for easy viewing.



# Automatic Cover Slipper

With Touch Screen Display

MCS Automatic Cover Slipper is used for cover slipping the specimen slides of cells, blood and body fluids. It is an open system and no special consumables are required.

## MCS At A Glance

- 8-inch User Friendly Coloured touch Screen which is easy to use and displays all the working parameters.
- Silent and smooth motors for noise and trouble free operations.
- Active Carbon Filter with high efficiency exhaust fan to remove all the toxic fumes from the working environment.
- Transparent hood to protect the tissues from dust and other particles during the cover slipping process.
- Cover Slipping Capacity: 200/300 Slides per hour
- Standard Glass Slides (25×75mm) are compatible.
- Capacity of front loading cover slide rack is 160 slides.
- The height of the machine can be adjusted according to the user requirement.



Touch Screen Display



Exhaust Fan with  
Charcoal Filter



Transparent Hood



Front Loading Tray



Silent Motors

# Automatic Cove Slipper

MCS



---

## Display

Color touch screen 8 inches

## Glass Slides

26X75mm

## Type of Slides, Baskets

20 Slides/rack & 30 slides/rack

## Capacity of Cover Slide Rack

160 Slides

## Active Carbon Filter

Yes

## Operating Voltage

220V, 50Hz

## Dimensions

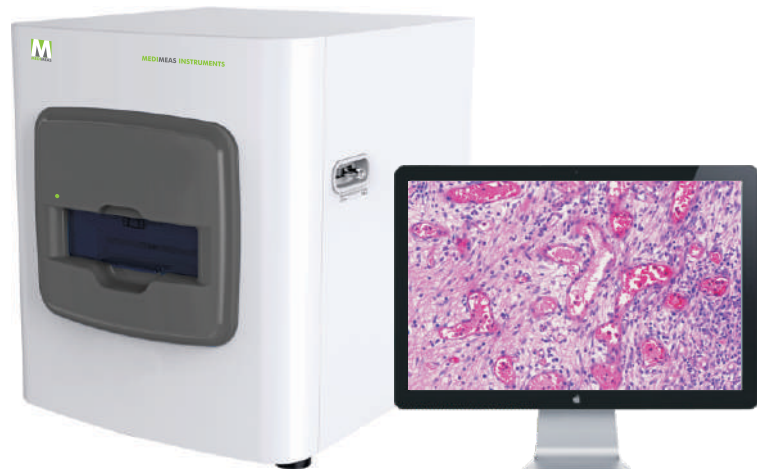
590mmX510mmX650mm

# Digital Slide Scanner

Digital Slide Scanner : The high speed of scanner makes it a perfect choice in application of frozen section diagnosis.

## MDSC At A Glance

- 2/5 Slides loaded
- One click automatic scanning
- High precision panoramic digital slides images
- Great conformity with pathology system
- Strong technical support
- Linear axis magnetic driver
- Software Provide realtime image capture



---

### Slide Scanning Capacity

5 slides in one time

### Bar Code Reader

Yes

### Scanning Resolution

0.5 $\mu$ m/pixel @ 20X

0.25 $\mu$ m/pixel @ 40X

### Focussing

Automatic

### Camera

Tri Linear CCD Camera

### Slide Size

25mmX75mm

### Illumination

LED

### Scanning Speed

40 Seconds at 20X  
(15mmX15mm)

90 Seconds at 40X  
(includes focussing time)

### Multi Layer Scan

Yes

### Scanning Speed

40 secs @ 20X / 90sec@ 40X

### Image Export Format

JPG, JPG 2000, BMP, TIFF

### Scanning Method

Line Scanning

### Positional Accuracy

50nm



# Horizontal Slide Storage Cabinets

MODULAR STORAGE CABINETS can store large quantity of slides in less space.



MSSC-H

---

## Construction

Cold rolled steel with powder coated finish

## Drawers

Slidable with handle

## Stackable

Yes

## Storage Capacity

1500 / 3000 / 4500 / 6000

## Dimensions

515mm X 485mm X 360mm  
(for 1500 slides Cabinet)

# Vertical Slide Storage Cabinets

MODULAR STORAGE CABINETS can store large quantity of slides in less space.



MSSC-V

---

## Construction

Cold rolled steel with powder coated finish

## Drawers

Slidable with handle

## Stackable

Yes

## Storage Capacity

10000 / 20000 / 30000 / 40000

## Dimensions

515mm X 485mm X 360mm  
(for 10000 slides Cabinet)

# Vertical Slide Storage Cabinets

MODULAR STORAGE CABINETS can store large quantity of slides in less space.



MSSC-VL

---

## Construction

Cold rolled steel with powder coated finish

## Drawers

Slidable with handle

## Stackable

Yes

## Storage Capacity

5000 / 10000 / 15000 / 20000

## Dimensions

400mm X 488mm X 130mm  
(for 5000 slides Cabinet)

# Block Storage Cabinets

MODULAR BLOCK STORAGE CABINETS can store large quantity of blocks in less space.



MBSC

---

## Construction

Cold rolled steel with powder coated finish

## Drawers

Slidable with handle

## Stackable

Yes

## Storage Capacity

4000 / 8000 / 12000 / 16000

## Dimensions

520mm X 480mm X 490mm  
(for 4000 slides Cabinet)

# Hot Air Oven

## MHAO At A Glance

- Standard double wall fabrication.
- Inner chamber made of richly anodized aluminum or highly polished stainless steel sheet.
- Exterior fabricated out of thick mild steel sheet
- Duly finished in stove enamel off-white paint
- Wall gap filled with special grade glass-wool for heat insulation.



PID/Analog  
Control Panel



Stainless Steel  
Construction

---

## Temperature range

50°C to 250°C

## Chamber Sizes

300x300x300

400x400x400

600x600x600

900x900x900

## Number of Shelves

2 / 3

## Temperature Control

Thermostatically / Digital

## Air Circulating Fan

Optional

## Timer 0-24 hrs

Optional

# Water Bath

## M-WB At A Glance

- Double walled construction with inside made up of stainless steel and outside mild steel with powder coating finish.
- The gap between the wall is filled with special grade glasswool for proper insulation to avoid heat losses.



PID/Analog  
Control Panel



Stainless Steel  
Construction

---

## Construction

Double Walled

## Available Capacities

14 Ltrs.

22 Ltrs.

## Number of Shelves

2 / 3

## Temperature Control

Thermostatically / Digital



# Automatic Razor Sharpener

Automatic Razor Sharpener (spencer Type) a precise automatic microtome knife sharpening equipment for sharpening of all microtome knives upto 185mm in length and equipped with automatic timer to adjust sharpening time.

## MRS-1160 At A Glance

- Automatic Timer
- Sharpen knives upto 185mm length
- Transparent cover for dust protection
- Micro Abrasive Suspension for coarse and fine honing operation



Precise Knife  
Sharpening



Automatic Timer

---

## Knife Length

upto 185 mm

## Sharpening Time Adj.

Yes

## Coarse Operation

Yes

## Fine Operation

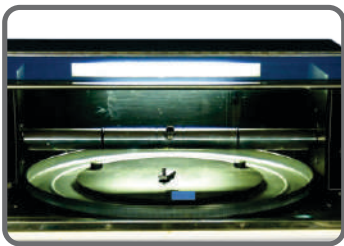
Yes

# Electrical Knife Sharpener

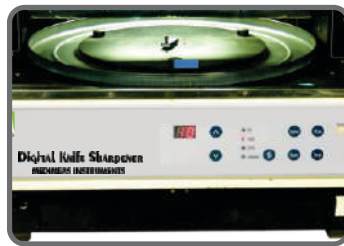
Equipped with automatic timer to adjust

## MKS-DS At A Glance

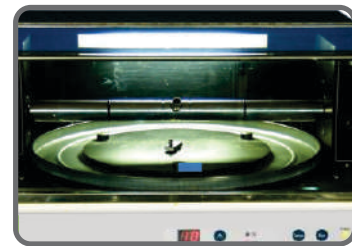
- SCM Program Control, easy operation
- Multi purpose Knife Holder
- Automatic Disc Levelling
- Buffer Adjusting Mechanism for turning knife
- Convenient Loading and Unloading for knife slicing
- Low Noise Operation



Plexiglass Dust Cover



Microprocessor Based



Interval Turnover of Knife

---

### Knife Length

110-250mm

### Thickness

Less than 13 mm

### Grinding Angle

22 - 45° ( half angle 11 - 22.5°)

### Timing Range

1 - 60 min

### Knife Interval

5,10,25 s and unilateral

### Dimensions

586 × 555 × 426mm

### Noise

60 dB

### Accessories

Universal knife Holder, Knife Inspection Block, Redressing pad Honing Plates, Honing Glass Compound (250ml bottle)

# Accessories

## SS Tissue Cassettes

**MEDIMEAS** Stainless Steel Tissue slide carriers

**Available in following sizes:**

20x20mm

25x25mm

32x32mm



MSC

## Plastic Staining Jars

MEDIMEAS offers complete range of Slide staining troughs and carriers. Depending on the laboratory work load the user can select the suitable trough and carrier to avoid reagent wastage.

**Available Sizes:**

Plastic Staining Trough for 24 slides



MSST 24

## Glass Staining Jars

MEDIMEAS offers complete range of Slide staining troughs and carriers. Depending on the laboratory work load the user can select the suitable trough and carrier to avoid reagent wastage.

**Available Sizes:**

Glass Staining Trough: 30 slides and 60 slides

Stainless Steel Slide Carrier: 30 slides and 60 slides



MST30

MST60

# Accessories

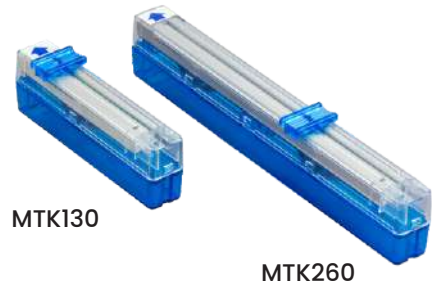
## Trimming Knives

MEDIMEAS Trimming knives used for sectioning tissues sample during grossing or autopsy procedures.

Made up of high quality stainless steel.

### Salient Features

- Section number of organs with durability
- Section hard tissue easily
- Available in 130mm and 260mm size
- Safety stopper in the box to prevent knife from falling down
- Unique dispenser type box



## Handle for Trimming Knives

These handles are available for different blade sizes i.e. 130mm, 260mm.

### Salient Features

- Sturdy Handle
- Unique design for easy blade removable & replacement
- Made in Japan



## Disposable Microtome Blades

M-ARM-DB : MEDIMEAS New Microtome disposable blade with latest Plasma technology that improves sharpness and durability of the Blades.

### Salient Features

- Specially honed and coated for higher durability
- Excellent reproducible sections
- Longer Blade lifeS
- Enables thin sectioning of hard tissuesS
- Compatible with any make microtomesS
- Coated for better performance



# Accessories

## Wax Trimmer

MEDIMEAS trimmer is used to remove the excess wax from the embedding cassettes by scraping it over a grooved and heated surface prior to sectioning and has an waste tray attached to collect the excess wax.

### Salient Features

- Uniform and precise temperature control
- Battery backup to retain data
- Feather touch keypad with LED display



M-WT

### Operation

Microprocessor Controlled

### Temperature Range

ambient to 99 °C

### Work Area

230 x 160mm

## Blade Holder for Disposable Blades

A special attachment made for Spencer type Microtomes for the use of disposable blades instead of microtome knives.

Available for both Low Profile and High Profile Disposable Microtome Blades. a special side tightening knob to uniformly tightening the knob



## Microtome Razor

Microtome Razor are made up of special steel alloy. To suite the user need there are three different sizes: 120/140/160mm. These are supplied complete with back and handle in the wooden box.



# Projection Microscope

## MPM-Series

Din Standard Plan Achromatic Optics  
The 195 mm round graduated screen  
Co-axial mechanical stage



MPM-588

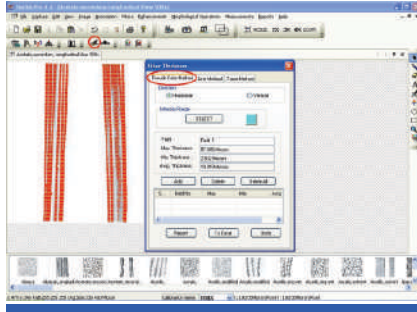
---

	MPM-585	MPM-588	MPM-590
Eye Piece	Compensating	Compensating and Wf10x Paired	Compensating
Magnification	125x to 1000x	100x to 1500x	125x to 1000x
Binocular Head	No	Yes	No
Polarising	No	No	Yes
Objectives	4/5,10,20 &40/45 X	4/5, 10, 20,40/45, 60 X	P4/5, P10, P20 & P40/45 X
Optics	Standard Optics	Din Standard TC Series	Din Standard Polarising Obj.
Projection Screen	195 mm Rotatable 360°		
Illuminator Halogen	Lamp 12V/100W		
Power Requirement	220 Volt AC @50Hz		



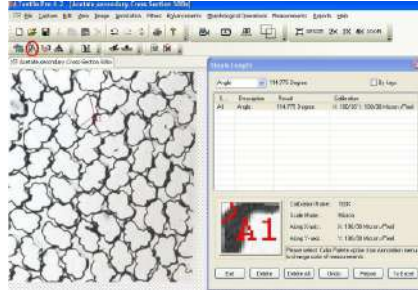
# Fiber-Pro Software

## Fiber Thickness



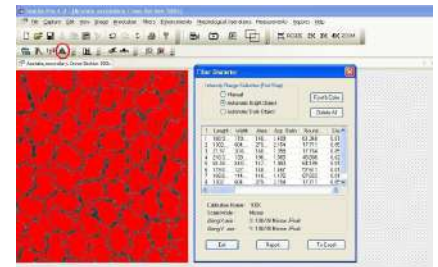
## Staple Length

- Straight Length
- Curved Length
- Area
- Perimeter
- Angle
- Width
- Radius

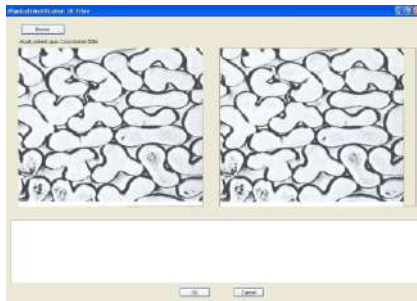


## Fiber Diameter

- Length
- Area
- Roundness
- Box Area
- Centroid X
- Centroid Y
- Orientation
- Sphere Volume
- Minor Axis
- Thread Width
- Min. Radius
- Width
- Aspect Ratio
- Shape
- Centroid X
- Elongation
- Diameter
- Major Axis
- Thread Length
- Fiber Width
- Max. Radius

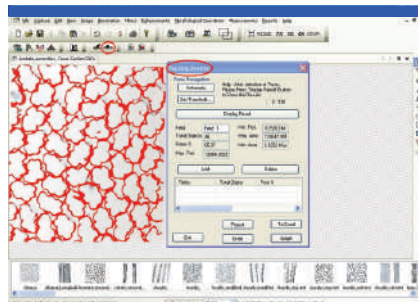


## Physical Identification Of Fiber

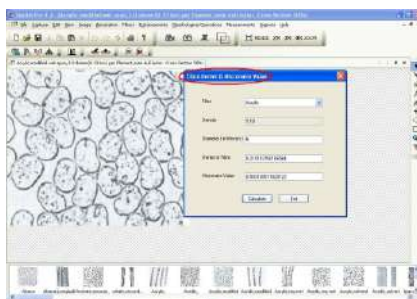


## Packing Density

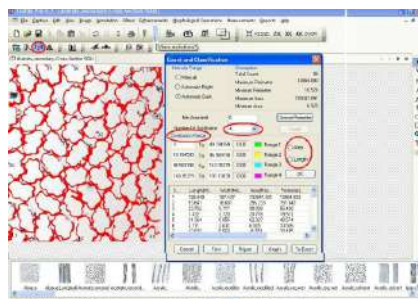
- Number of Pores
- Pores Percentage
- Maximum Parameter
- Minimum Parameter
- Maximum Area
- Minimum Area



## Fiber Denier & Micronaire Value



## Count & Classification Value



# Refractometer

Highly reliable Abbe Refractometer is capable of measuring the refractive index of solid and liquid samples.

## MAR-33 At A Glance

- Built in light provides accurate analysis of industrial process controls
- Easy to read index scale on translucent glass sharply visible through transmitted light
- Till the estimated fourth decimal
- Large dull knobs permits speedy convenient setting of the dividing line
- Horizontal loading of prism housing prevents flowing down of test liquids
- Thermometer has a range 0-60°C

## MAR-22 At A Glance

- Readings till the estimated fourth decimal
- Measure dispersion of liquids and solids
- Widely used for purity studies, quantitative analysis
- Determination of soluble sugar and fats in: Sugar solutions, confectionery products, pharmaceuticals products, chemical & prepared slides, glass and synthetic crystals etc



	MAR-33	MAR-22
Refractive Index Range	nD 1.3000-1.7000	nD 1.3000-1.7000
R.I. Mini Scale	nD 0.001	nD 0.001
Brix Percentage Range	0-95%	0-95%
Brix Min, Scale	0.5%	0.5%
Accuracy of R.I. & Brix	+0.0002 +0.1%	± 0.001
Dispersion	nF-nC	ND # 0.0005
Applicable Temperature	0 to 50°C	0 to 50°C
Light Source	8V, 0.15A Tungsten Lamp	N/A
Display Temperature Resolution	0.1°C	0.1°C
Light Arrangement	Built in Lamp	Reflector

# Hand Refractometer

Hand Refractometer also available in three ranges :

MHR - 05A : 0 to 32%

MHR - 05B2 : 8 to 62%

MHR - 05C5: 8 to 90%

All the above models have an accuracy of +2 and are supplied with a screw driver for scale driver for scale adjustment in a carrying case.



## MAR-33 At A Glance

- All metal construction
- Rubber Hand grip for Insulation
- Anti Roll Supports
- High Precision Clear Scale
- Zero Adjustment with Lock
- Ideal for Hot & Cold Samples
- Robust Ergonomics for easy handling

# Moisture Balance

A high performance, compact, dependable infra-red Moisture Balance is used for measurement of moisture content of materials which are not affected by radiation while losing water due to moisture exposure of infra-red radiation. The 250W infrared lamp produces heat which is controlled by auto transformer. The balance is calibrated in terms of moisture percentage 0-100% and is read directly on the instrument.

## Measuring Range

0-100%

## Readability

0.2%

## Accuracy

±2%

## Forceps Pair

1

## Capacity

5/10/20/25 gms

## Thermometer

1

## Aluminum disposable pans

12

## Dimensions

270×320×340 mm



# Polarimeter

Used for determination of rotation of all optically active substances in testing oils, medicines, sugar and albumen in urine, food stuffs and products of brewery

## MKS-DS At A Glance

The angular scale from 0 to 360 degrees is sub-divided to 1 degree

Direct reading to 0.5 degree

Estimation 0.02 degree.

Sugar scale from 30° to 120° I.S.S. Units

Directs reading to 0.1

Estimating of 0.05 sugar degree.

It incorporates a precise glass circle, a scale plate with minutely finished rotating mechanism and tropic proof highly sensitive optical systems, the test result can be read precisely and directly without the aid of a vernier. Rigid attachment of the illumination lamp to the instrument reduces wearisome adjustment to a minimum



MP-01 POLARIMETER



MP-02 POLARIMETER

	MP 01 A	MP 01 B	MP 02 A	MP 02 B
Shadow System	Half Shade	Triple Field	Half Shade	Triple Field
Sample Cell Length (mm)	200	200	400	400
Scale Range - Angular	0-360°			
Graduation Vernier - Angular	0.5°			
Scale Range - ISS	30° to 120°			
Graduation Vernier - ISS	0.1°			
Resolution	0.1°			
Light Source	Sodium Lamp			

# Table Top Magnifier

TTM Series



TTM(I)



TTM (II)



TTM(III)

---

MODEL	TTM (I)	TTM(II)	TTM(III)
<b>Magnification</b>	3.5x	3.5x	7x
<b>Illumination</b>	22 watt Circular Fluorescent Tube Dia. 216mm		
<b>Outer Ring Dia.</b>	220mm	220mm	220mm
<b>Lens Diameter</b>	148mm	148mm	148mm
<b>Effective Lens Dia.</b>	135mm	135mm	135mm
<b>Maximum Height</b>	380mm	580mm	390mm
<b>Vertical Movement</b>	210mm	N.A.	210mm
<b>Horizontal Movement</b>	250mm	890mm	250mm
<b>Lens Tilt</b>	90°	90°	90°
<b>Stand Type</b>	Table Top	C Clamp	Table Top

# Table Top LED Magnifier

TTm Series



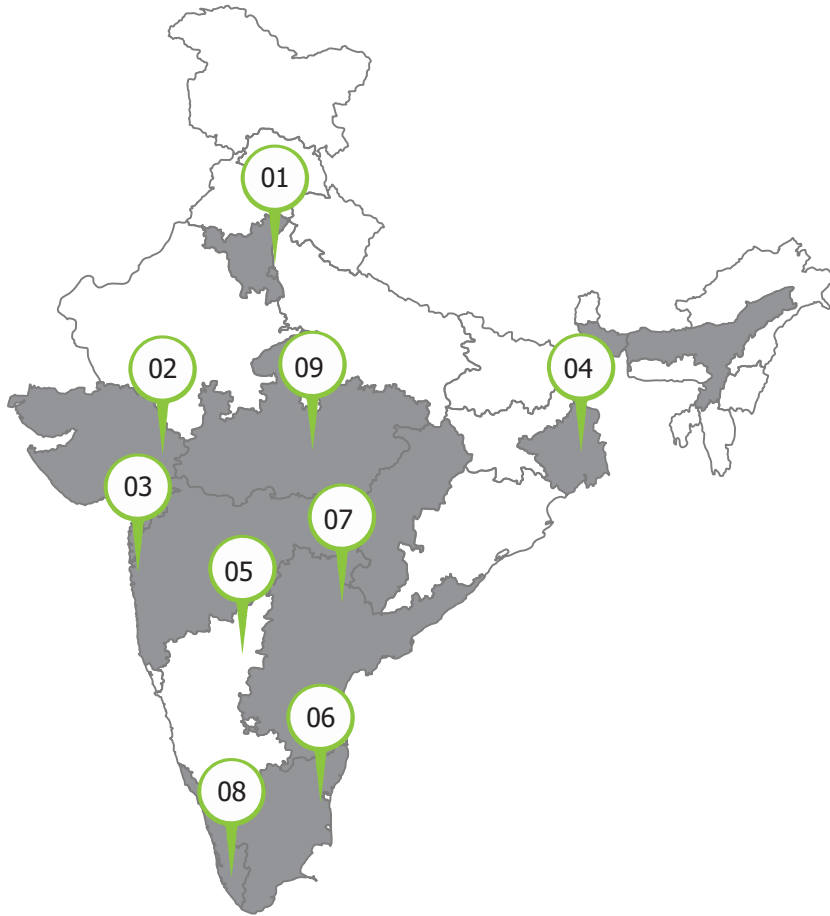
TTM 8.6

TTM 10.21

---

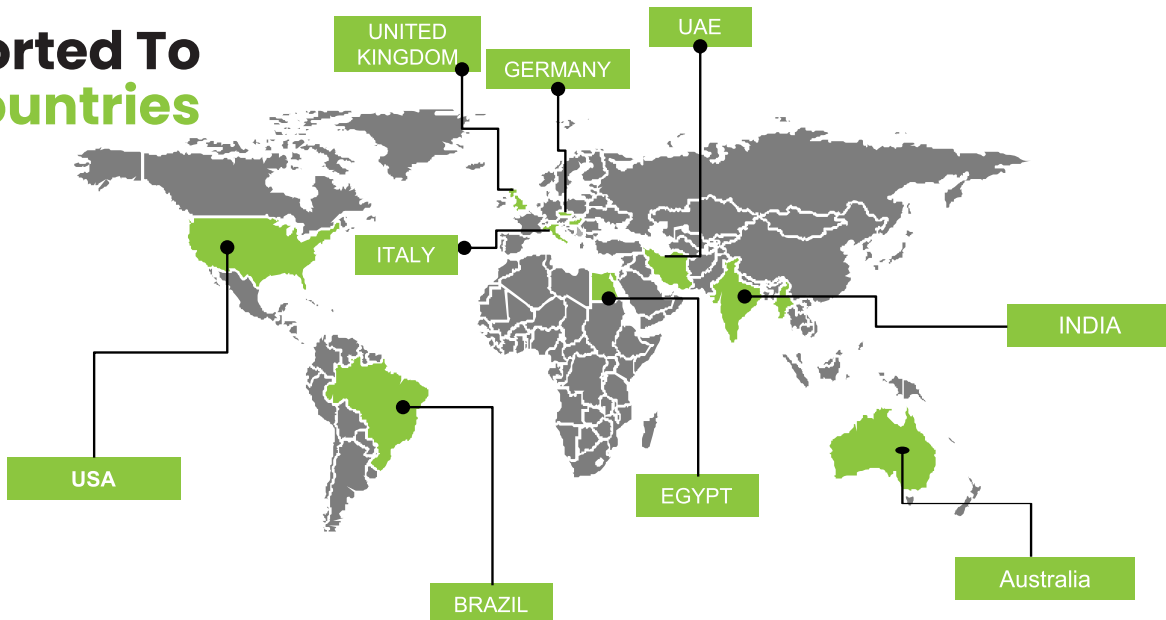
MODEL	TTM 8.6	TTM 10.21
Magnification	8x	10x
Illumination	6 LED	21 LED
Lens Diameter	138mm	130mm
Stand Type	Table Top	Table Top
Power	100-240V	100-240V

# Indian Roots & Global Reach



- 01 Delhi**  
 Sector-23, Dwarika Pochanpur New Delhi  
 Contact Person: Jitender - 82229 29990
- 02 Rajkot**  
 304 Diwali Chambers, dhebar Road, Rajkot, Gujarrat-360002  
 Contact Person: Monti - 89500 99611
- 03 Mumbai**  
 M/s Technical Resources C-19/20, Dahisar (W) Mumbai  
 Contact Person: Vivek - 70824 20434
- 04 Kolkatta**  
 95A, Chittaranjan Avenue, Kolkata-700073  
 Contact Person: Sandeep Singh - +91 70824 20432
- 05 Bangalore**  
 178/2, Govindarao Street Behind Canara Bank, Seshadripuram Bengaluru  
 Contact Person: Akshit Chauhan - +91 81999 39662
- 06 Chennai**  
 No.: 74, Thiruvalluvar Street Jagathambigai Nagar Padi, Chennai-600 050  
 Contact Person: Sohan Yadav - +91 70567 99644
- 07 Hydrabad**  
 No.36, 1st Floor, Raghava Ratna Towerschirg Ali Lane, Abids Hydereabad  
 Contact Person: Govind - +91 70567 99665
- 08 Kerala**  
 XI 434, Chakkiath Joseph Mem Bldg, Parappuram Jun., Karakutty, Ernakulam  
 Contact Person: Praveen- +91 89500 99655
- 09 Jabalpur**  
 9 GD Complex, Marhatal, Jabalpur 482002 MP  
 Contact Person: Nizam : +91 89500 99655

## Exported To 25 Countries

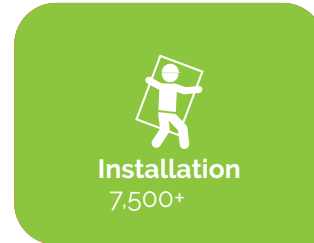




# Installation, Training & Online Support

Installation and Training is free of cost for all customers and usually takes place within 3 to 4 days of the delivery of the equipment at customer premises. The training duration strictly depends upon the technician and operator comforts. We consider it done once they are fully trained.

We offer two types of support: online and offline. Online support is free of cost throughout the life of the equipment and resolves 90% of the issues.







# Book your Product DEMO

Book a LIVE DEMO to get all your queries answered



<https://medimeas.com/book-a-demo>



Book a 30mins online demo



Visit Our Website



Watch Product Videos


# MEDIMEAS

Manufactured & Supplied by : Sipcon Technologies Pvt. Ltd.

Plant 1: 116-B HSIDC, Industrial Estate,  
Ambala Cantt-133001 Haryana-India

Plant 2: Plot No. 280, HSIDC Industrial Estate,  
Saha-Ambala Haryana-India

 +91 171 2699668, 2983231, +91 82228 99677

 +91-171-2699667

[www.medimeas.com](http://www.medimeas.com)

[contact@medimeas.com](mailto:contact@medimeas.com)



EN\_03\_27\_0023 Printed in India MOH\_IDEA/JAS  
Subject to change in design and scope of delivery and as a result of on going technical development