

1.2 Information and use of the instrument

S2 The Histo-Pro 300 is an automatic tissue processor is designed for the laboratories of Histology and research.

This recently-built instrument Histo-Line Laboratories home combines the simplicity of use of the same by operators with maximum safety and reliability.

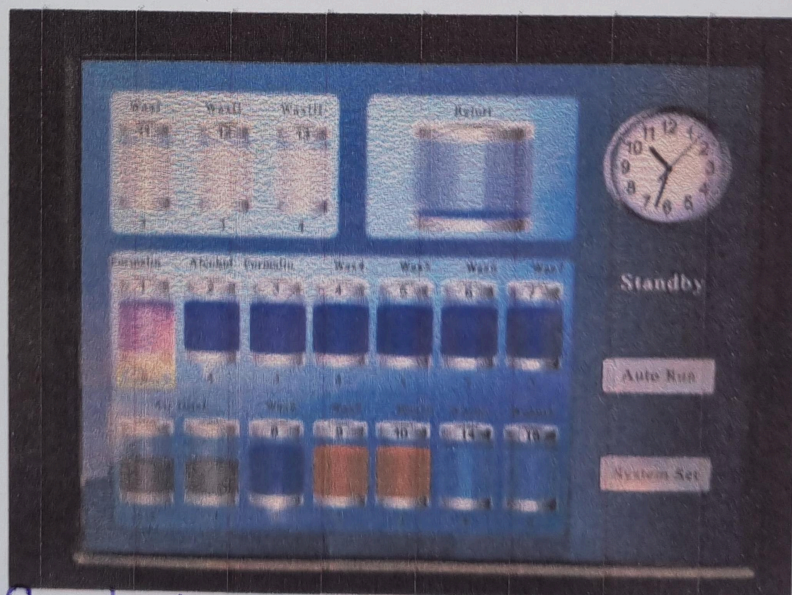
S1 Clarity and ease of access to the controls can be found in front of the instrument, equipped with a touch screen color screen attached to the control panel.

It equipped with an intelligent software and easy to use, with an alarm system as a reminder or failure of the instrument

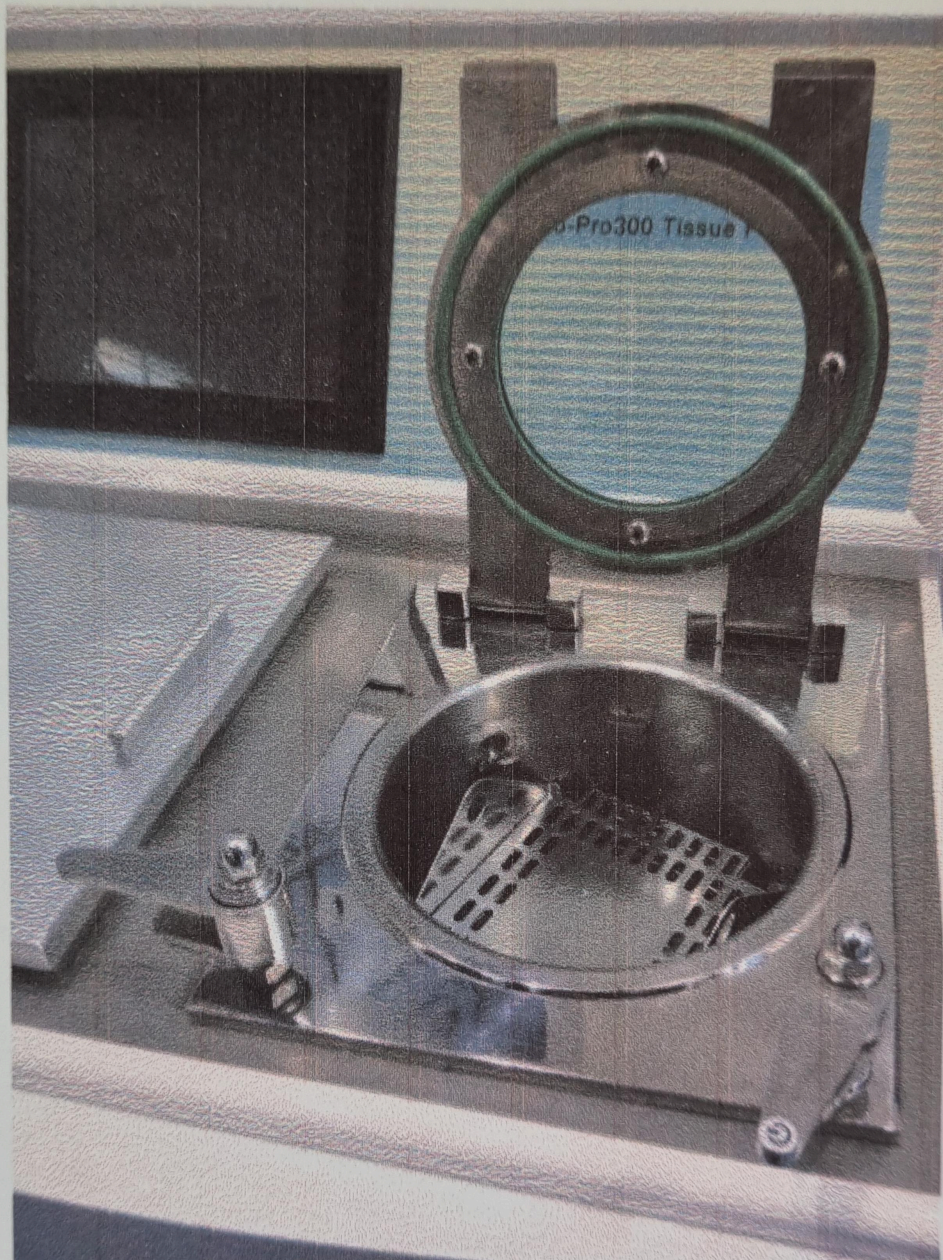
S9,10,11 Multiple system of sample protection.

Histo-Pro 300 processes all biological tissues, both with standard protocols and substitutes do not as toxic as Diaphane (xylene substitute and d-lemonene). For both the processor is designed with optimized protocols and adaptable to all circumstances.

The software maintains all the necessary protocols, with the option to set: the reagents used, the processing time, the operating temperature, the stirring time.



Manual tecnico pag. 4



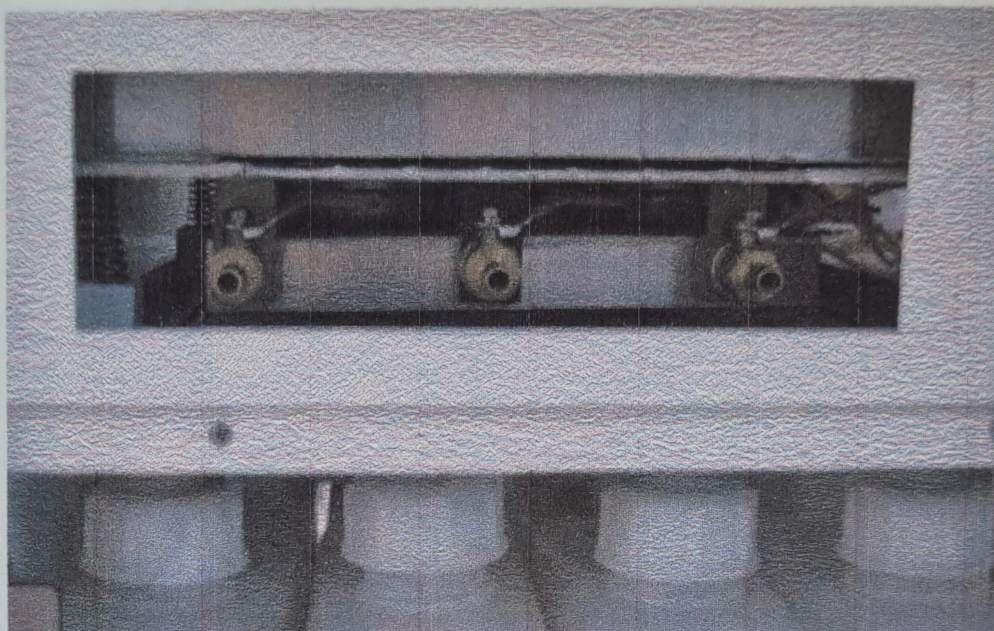
Using the control panel, you can view and modify the operating parameters, such as processing programs, the temperature of the wax rooms.

58

Also it allows for daily and weekly programming on and off.

The adjustment of the working temperature is carried out via electronic thermostat with microprocessor.

Manual tehnic pag. 5



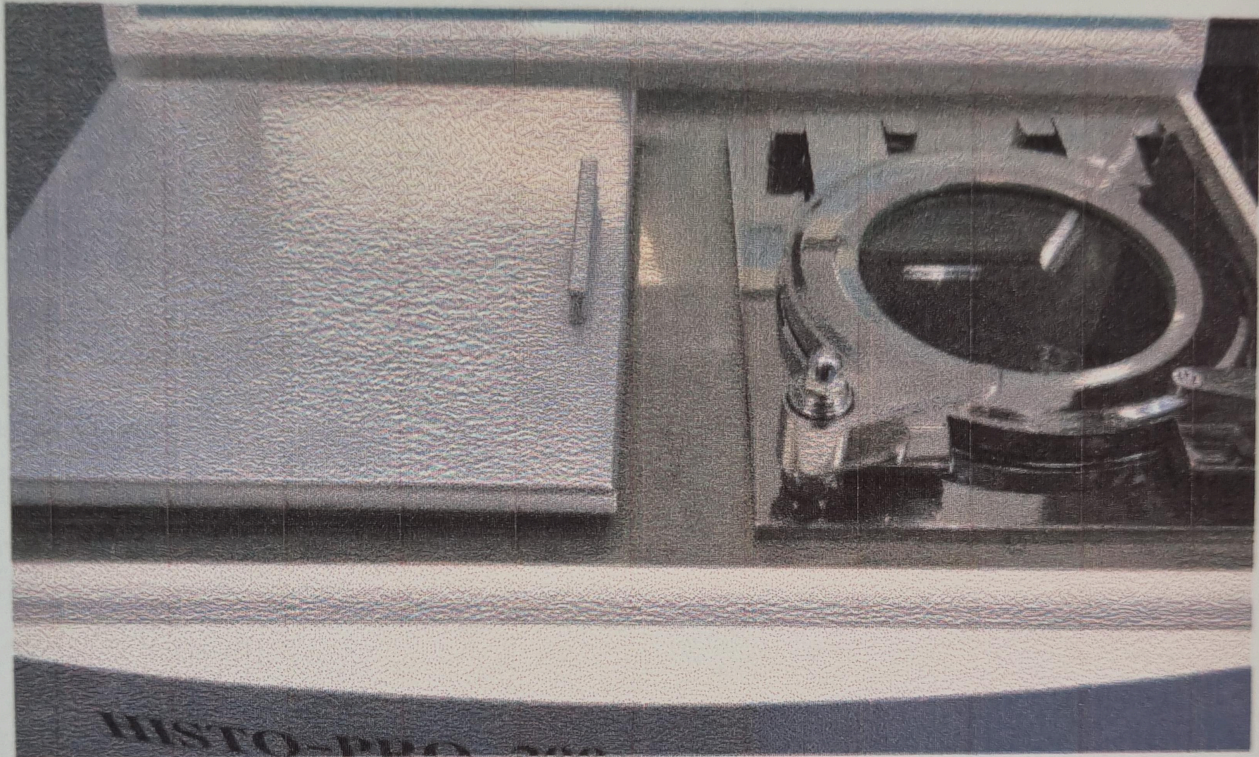
S5 The operator can set the different programs, diversified by time, temperature; there are also special programs for the cleaning of paraffin rooms.

In the front part, behind a small flap retractable, there are the hose connections for filling and emptying of reagent tanks and / or paraffin.

The basket provided offers the possibility of having different load quantities: ~100, ~200, ~300 cassettes with use controlled amounts of reagent according to the load.

S1 Screen 14" a color touch screen, is resistant to solvents, with a graphical representation of the management process of the instrument, through an intuitive software.

Manual tecnica pag. 6



The ergonomic design allows for easy accessibility.

All major functions for the user are easy to access. This includes the hose connections for filling and emptying of the remote reagents and / or paraffin.

S12 The filling and emptying increase user safety.

The simple and safe filling of the system, thanks to the level sensors, ensures that the reagent tanks are always filled in the correct amounts.

S9,10,11 The result: maximum protection of the operator, quality of materials and minimization of operational errors.

Manual technic pag. 7

1.3 Processor capacity

S3

The instrument to process up to 20 fully settable by the operator programs and composed of a maximum of 10 reagent and 3 pools of paraffin.

Time for each program: from 0 to 99 hours and 59 minutes.

S16

Up to 300 cassettes can be processed simultaneously

Wax clean program

10 tanks for reagents

3 baths for wax paraffin

2 tanks with cleaning solution

S14 {

1 condensation tanks

1 carbon filter bottle



2. Technical features

2.1 Technical Data

Certification: CE, IVD
Protection class: I
Fuses type Fst: 10 A
Pollution class: 2
Over-voltage Category II Installation
Power supply: 220V ~ 50Hz
110V ~ 60Hz
Relative humidity: 10 to 80%
Maximum power draw: 1500 V/A
UPS: (Optional)

2.2 Paraffin stations

Number of paraffin baths: 3
Volume (in liters): 4.0 lt. / Each tank
Melting time: Approx. 3 hours
Temperature: 65 °C
Temperature accuracy: + 1 °C

2.3 Process chamber

Capacity: approx. 300 cassettes, contained in a stainless steel drum to 3 floors with two separators and closing top cover

Reagent volume: 6.1 Lt

Temperature (paraffin): 50°C - 65°C

Temperature (reagents): ambient or 35°C

Temperature (cleaning reagents): 50°C - 65°C

Temperature accuracy: + 1°C

Filling time: up to 5 min

Drain time: up to 5 min

Impregnation vacuum: -70 kPa (g)

Impregnation pressure: 35 kPa (g)

Fill vacuum: -70 kPa (g)

Drain pressure: 35 kPa (g)

Manual technique pag. 9

2.4 Stationing reagents

Tanks of reagents: 10
Tanks of cleaning solution: 2
Maximum of tanks volume: 6.8 l.
Recirculation (pump in/out): ON/OFF
Time between cycles: 15 min

2.5 Hardware and software

S1 Large touch screen liquid crystal display (LCD) 14 "
Smart and easy to use software
Alarm system as a reminder or failure in the instrument
Protection of samples multiple system

2.6 Capacity

Capacity: approx. 300 cassettes, contained in a stainless steel drum to 3 floors with two separators and closing top cover

S3 Tanks of reagents: 10
20 programs that consist of up to 10 reagent and 3 paraffin wax steps.
Time for program step: 0 to 99 hours, 59 minutes
wax clean program
10 tanks for reagents
3 baths for paraffin
2 tanks with cleaning solution
S14 1 condensation tanks
1 carbon filter bottle

2.7 Dimensions and weight

Dimensions: width 62 cm X depth 68 cm X height 123 cm
Net weight: 100 kg
Weight with packaging: 120 kg

2.8 Instrument equipment

Power cable
Manual instructions

Manual technic pag. 10