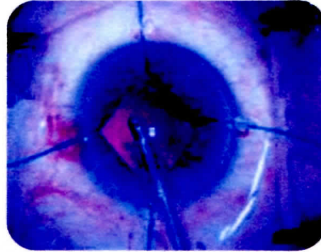
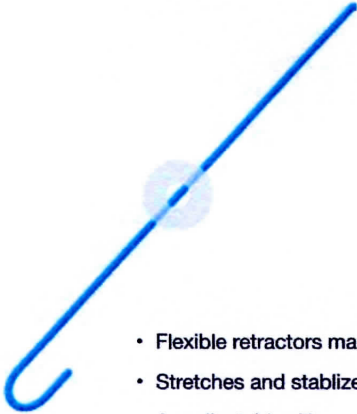


# CATARACT & IOL

## IrisCare

Flexible Iris Retractors

Flexible iris retractors are used for temporary retraction (pupil enlargement) of the iris where dilation cannot be achieved pharmacologically.



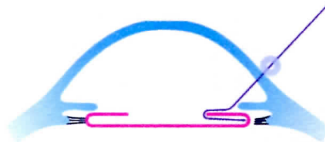
- Flexible retractors made of bright blue PP (Polypropylene)
- Stretches and stabilizes the Iris during the cataract surgery
- An adjustable silicon stopper provides a superior grip and allows adjustment of the pupil size
- Easy to insert and remove
- CE certified

Product Code	Description	Qty. per box
MIPL/D1	Iris Retractors	5 pcs. (Sterile)

## CapsuleCare

A Capsular Bag Supporting Device

Capsule hooks are used for temporary support of the capsular bag during a cataract surgery when the zonules are weak or in case of subluxated lenses.



- Capsule hooks are made of Nylon with an adjustable silicon lock
- Designed such that the hook is angled to be in the plane of the anterior capsule
- Easy to get a firm and reliable grip on the rim
- Tip of the hook is rounded to prevent any accidental damage to the peripheral capsule while placing the hooks in the bag
- Round tip also provides a larger support area per hook there by reducing the number of hooks required in each surgery
- Silicon lock helps in retaining the hook in retracted position during the surgery
- CE certified

Product Code	Description	Qty. per box
MIPL/D8	Capsule Hooks	5 pcs. (Sterile)

## Advantages

- Maintains the position of the capsule during phaco
- Supports the fornix as well as the capsulorhexis rim, so that the peripheral capsule isn't attracted towards the phaco tip
- Avoids the problem of the capsular tension ring trapping cortex

- Prevents zonular stress during nuclear rotation
- Makes it possible to perform posterior chamber phaco even with subluxated lenses having minimum zonular support
- Easy to insert and remove