

# Service Manual

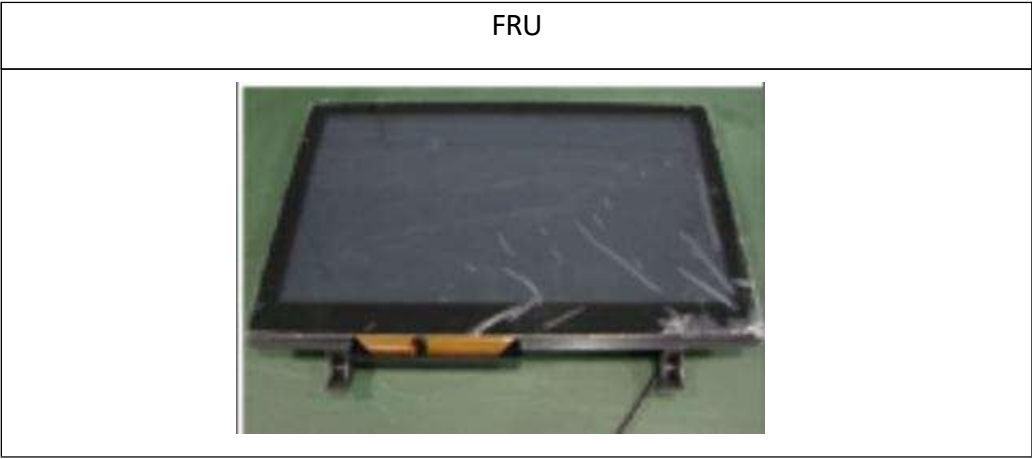
VINNO G86/G65/G65E/G65P  
/VINNO75/VINNO75E/VINNO75P

Revision 5.0



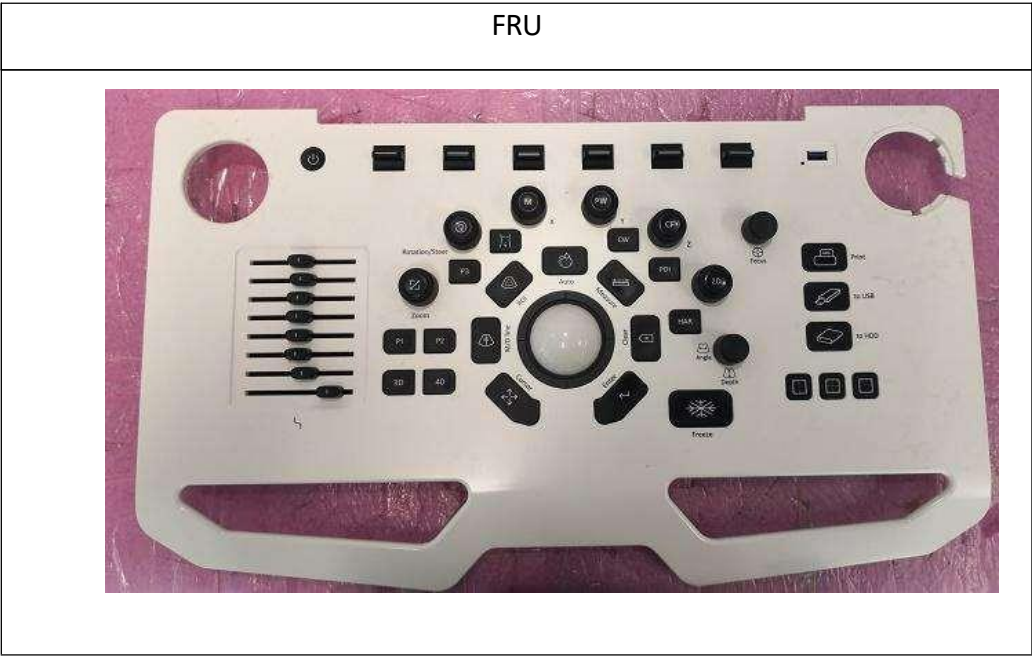
Copyright 2025 by VINNO Technology (Suzhou) Co., Ltd

5.1.2 Touch panel



Part Number	1000187
Part Name	G60 touch panel assembly

5.1.3 Keyboard Control Panel



Number	Part Name
NA	Keyboard Control Panel

## 6 Replacement

This chapter shows how to disassemble and reassemble the system that may be required for removal and replace work. Also users of this manual can refer to configuration drawing of the attachment.

### 6.1 Important information

#### 6.1.1 Definition

Fig 10 shows the definition of covers and bumpers.



### 6.1.2 Warnings and precautions



#### **WARNING**

Always Turn the power off, and unplug the power cord for at least 30 seconds before disassembly.



#### **WARNING**

Back up all the data of the patients' information, test results, measurements etc. before conducting disassembly.



#### **CAUTION**

At least 2 personnel are needed during this disassembly work.



#### **CAUTION**

Always wear ESD protection device, when disassemble and reassemble. ESD damage may be first exhibited as a slight degradation of performance. However this damage is cumulative. And it will affect the durability of the system in the long run.



#### **CAUTION**

Check at least 2 times (cabling and insulation) before powering up.



#### **WARNING**

Misconnecting the system will lead to hazard. So do not plug the Power Cord before verifying all the wires are correctly connected and a thorough inspection has been performed.



#### **CAUTION**

DO NOT wear the ESD Wrist Strap when you work on live circuit that more than 30 Volts is present.



#### **CAUTION**

DO NOT Power up this system unless all the covers and frames are securely assembled in place.

## 6.4 Replace the touch panel

### 6.4.1 Remove the touch panel

Preparation-you must perform these steps first:

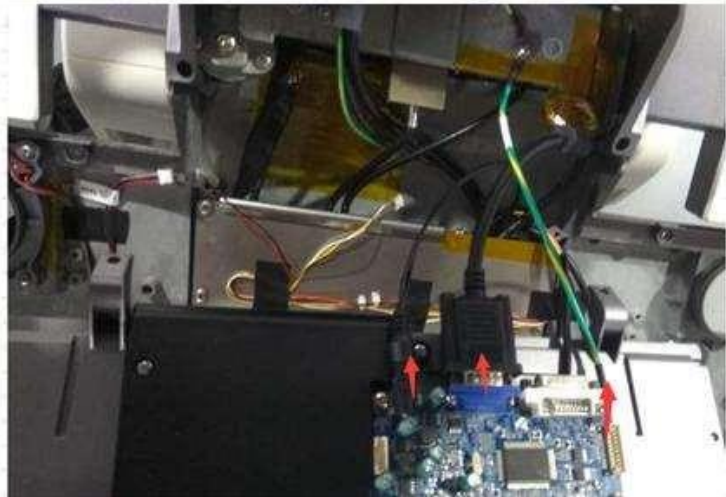
1. Turn the power off. Unplug the power cord.
2. Wait at least 30 seconds.
3. Remove the keyboard, refer to 6.3.

The following steps show how to remove the touch panel.

1. Remove two fixation screws.

2. Pull all the cables out of the panel and unfasten 1pcs screw.

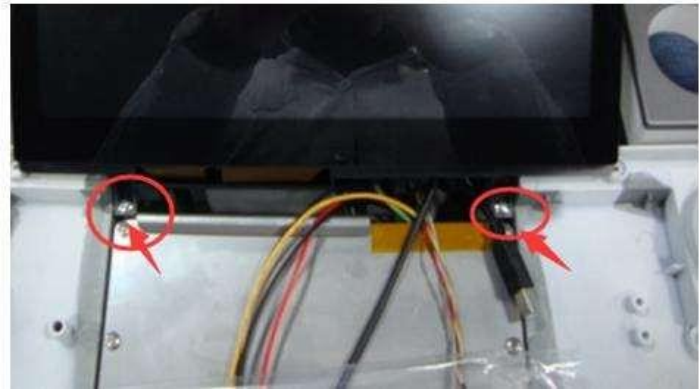
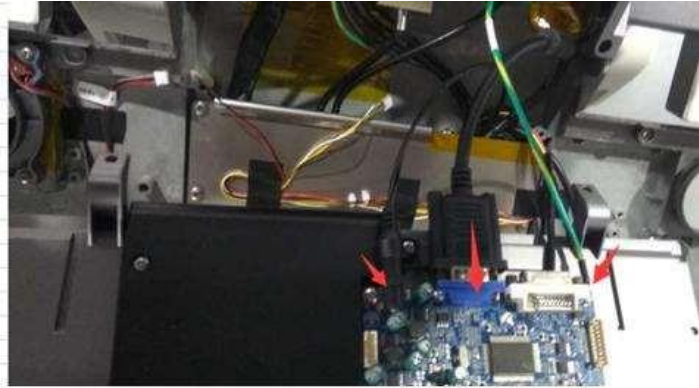
3. Remove the touch panel.



## 6.4.2 Reinstall the touch panel

The following steps show how to reinstall the touch panel.

1. Connect all the cables.
2. Fasten ground wire on VGA board then install the touch panel on frame.
3. Fasten 2pcs screws to fix touch panel



### 6.4.3 Functional checks

Perform the following steps, after reinstall the touch panel to verify if it works properly.

steps	Item	Description	Test result	
1.	Power up	Plug the power cord. And turn the power on.	Refer 6.2.3 functional check item 1 description.	
2	Buttons check	All button keys response check	Refer 6.3.4 functional check item 2 description.	
3.	Probe	Plug all types of probes	Refer 6.3.4 functional check item 3 description.	
4.	Touch panel checks	Basic touch function and resolution check.	Refer 6.2.3 functional check item 4 description.	
5.	Trackball checks	Slide the trackball	The trackball can slide.	
6.	Power Off	Turn the power off	Refer 6.2.3 functional check item 4 description.	