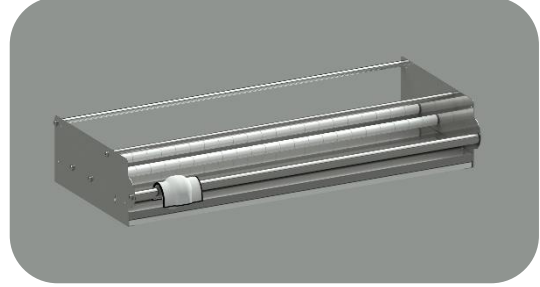


## DATASHEET FOR PLUSHINE SERIES ROLL CUTTER & HOLDER

PLUSHINE series system accessories, including stainless steel hospital furniture, containers, baskets and all related accessories, are used to increase performance & efficiency or to support workflow in a R.U.M.E.D. (Reprocessing Unit for Medical Devices) for operators. All equipment is equipped with software, electricity, and/or mechanical safety in case of problems where applicable.



### APPLICATION

PLUSHINE series roll cutter & holders are used to store and cut all kinds of rolls during packing operations.

### QUALITY AND CERTIFICATION

All process across TBT runs in compliance with EN ISO 9001, EN ISO 45001, EN ISO 14001 & EN ISO 13485. Roll cutter and holders are not subject to CE classification.

### MATERIALS USED

Unit is designed completely from AIS 304 quality medical grade stainless steel with satin finishing. Unit is completely TIG Argon welded where applicable. Circular designed cutting blade made of stainless steel with diamond cutting edge.

### FEATURES

Holder design with bars suitable for easy placement and storage of sterilization rolls. Blade sharpens itself with each use. An easy grip, plastic, ergonomic handle with hand protection system ensures operator safety. Dual side cutting and easy to set roll length and fixing makes unit suitable for both standard sterilization rolls and Tyvek® sterilization rolls and also improves operational speed. For applicable models, a sliding roll measurement table which can be hidden when not needed to save space, ensures accurate roll cutting up to 300 mm length. Non slipping base increases stability of unit at on counter models.

### DIMENSIONS

Ref. No	Dimensions <sup>a</sup>	Net Cutting Length (mm.)	Type	Roll Holder Level(s)	Measurement Table
	W x D x H (mm.)				
713002	750 x 328 x 500	625	On Counter	2	●
713003	750 x 328 x 140	625	On Counter	1	●
713184	550 x 328 x 500	425	On Counter	2	-
713185	650 x 328 x 500	525	On Counter	2	●
713186	550 x 328 x 140	425	On Counter	1	-
713187	650 x 328 x 140	525	On Counter	1	●
713264	550 x 328 x 140	425	Bench Mounted	1	-
713265	650 x 328 x 140	525	Bench Mounted	1	●
713266	750 x 328 x 140	625	Bench Mounted	1	●

● Standard ○ Optional - Not Applicable

<sup>a</sup> Roll measurement table is not included to measurements.

#### OPTIONAL FEATURES

Ref. No	Description	
712024	Wall Hanger with 2 Shelves, a Metal Holder, and Indicator Drawer	○
718000	Minor Modification on Unit <sup>a</sup>	○
718001	Application of Epoxy Colour Paint in RAL Colour Scheme	○

● Standard ○ Optional - Not Applicable

<sup>a</sup> Minor modification include dimensions customization, and other probable requests.

#### CLEANING

All surfaces are smooth and accessible for efficient cleaning. Compatible with using most common medical cleaners and disinfectants. (i.e. 70% ethanol alcohol). Please refer user manuals for additional details.

#### COMMENTS

The product must be used by specialised personnel only. Check the package's integrity before use. Do not use if the package is open or damaged.