

# LEGION Tower 7i (34L, 7)

## RAW, UNBRIDLED POWER AND SAVAGERY.

Leave a furious trail of devastation with our ultimate gaming mothership: the Legion Tower 7i. Feel the thrill, savagery and rush of an overpowering war machine bearing down on your opponents as you wield the latest 12<sup>th</sup> Generation Intel® Core™ i9K processors powered by the Ampere architecture of the latest NVIDIA® GeForce RTX™ 30 series graphics cards pushing frame rates to the max at high resolution. The Alder Lake-S Z690 motherboard with thermal armor future-proofs your build further, while the Legion Coldfront 4.0 (and optional 360 mm liquid cooling) drives high-octane performance even as your rig stays cool and whisper-quiet.

### WHY YOU SHOULD BUY THE LENOVO LEGION TOWER 7i (34L, 7)



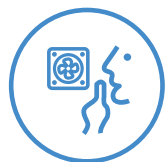
#### Built for the next generation of gaming

12<sup>th</sup> Generation Intel® Core™ processors give you superior gaming performance while delivering the flexibility to seamlessly multitask. Innovative new architecture matches the right core to the right workload, so background tasks won't interrupt your game. Giving you the freedom to chat, browse, stream, edit, record, and play without skipping a beat.



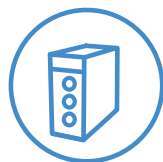
#### The ultimate play

NVIDIA® GeForce RTX™ 30 Series GPUs deliver the ultimate performance for gamers and creators. They're powered by Ampere—NVIDIA's 2<sup>nd</sup> gen RTX architecture—with new RT Cores, Tensor Cores, and streaming multiprocessors for the most realistic ray-traced graphics and cutting-edge AI features.



#### Brace yourself for the deep freeze

Take your performance to new heights with a deep freeze. The enhanced Legion Coldfront 4.0 cooling system gives the Legion Tower 7i whisper-quiet acoustics, blistering speeds due to enhanced fin thermals within the airy 34L interior due to a 9-blade design. An optional 360 mm liquid CPU cooler also offers faster heat dissipation. Transfer and distribute heat faster with optional thermal memory and storage armor.



#### Battlestation meets cyberpunk

Illuminate the cavernous 34L chassis with transparent side panels and customized ARGB lighting with up to 16 million colors and 12 effects inside, as you hear higher audio bandwidth with less clutter through six-channel audio with S/PDIF. Game at the next level with PCIe Gen 5 support, 2x bandwidth, and improved power efficiency from 4800 MHz DDR5 memory. Ample port selections improve connectivity via 2.5G ethernet and up to WiFi 6E, with 50TB capacity for storing over 1,000 AAA titles on one machine.



[WWW.LENOVO.COM](http://WWW.LENOVO.COM)



Lenovo

# LEGION Tower 7i (34L, 7)

## SPECIFICATIONS

Legion T7 34IAZ7\*

### PERFORMANCE

#### Processor

12<sup>th</sup> Generation Intel® Core™ i9-12900K  
12<sup>th</sup> Generation Intel® Core™ i9-12900KF  
12<sup>th</sup> Generation Intel® Core™ i7-12700K  
12<sup>th</sup> Generation Intel® Core™ i7-12700KF  
12<sup>th</sup> Generation Intel® Core™ i5-12600K<sup>1</sup>  
12<sup>th</sup> Generation Intel® Core™ i5-12600KF<sup>1</sup>

#### Operating System

Windows 11 Pro  
Windows 11 Home

#### Graphics

NVIDIA® GeForce RTX™ 3090; 24 GB<sup>2</sup>  
NVIDIA® GeForce RTX™ 3080 Ti (LHR); 12 GB  
NVIDIA® GeForce RTX™ 3080 (LHR); 10 GB  
NVIDIA® GeForce RTX™ 3070 Ti (LHR); 8 GB  
NVIDIA® GeForce RTX™ 3070 (LHR); 8 GB  
NVIDIA® GeForce RTX™ 3060 Ti (LHR); 8 GB  
AMD Radeon™ RX 6800XT; 16 GB

#### Memory

##### 4800 MHz DDR5

8 GB / 16 GB (1 x 16 GB / 2 x 8 GB) /  
32 GB (2 x 16 GB / 4 x 8 GB)<sup>2</sup> /  
64 GB (4 x 16 GB) / 128 GB (4 x 32 GB)<sup>2</sup>

##### 4800 MHz DDR5 ARMOR-RAM

8 GB / 16 GB (1 x 16 GB / 2 x 8 GB) /  
32 GB (2 x 16 GB / 4 x 8 GB)<sup>2</sup> / 64 GB (4 x 16 GB)

##### DDR5-XMP-RGB

2 x 8 GB / 4 x 8 GB<sup>3</sup>

#### Storage

##### 3.5" SATA HDD 7200 RPM

1 TB / 2 TB / 2 x 2 TB

##### PCIe NVMe TLC M.2 2280 SSD (Gen 4)

512 GB / 1 TB / 1 x 2 TB / 3 x 2 TB

##### Intel® Optane™ Memory H10 with Solid State Storage

Intel® Optane™ Memory 32 GB + Intel® QLC 3D  
NAND SSD 512 GB<sup>2</sup>

#### Hybrid Storage

3 x SSD + 2 x HDD

#### Power Supply

850W, 90%, ES Gold (Modular)  
500W, 85%, ES Bronze<sup>4</sup>  
550W, 88%, ES Silver (220V)<sup>1</sup>

### DESIGN

#### Motherboard

Intel® Alder Lake-S Z690, ATX

#### Volume

34 L

#### Dimensions (W x D x H)

##### Package Dimension

(mm) : 325 x 630 x 585

(inches) : 12.8" x 24.8" x 23.03"

##### Product Dimension

(mm) : 211 x 450 x 483

(inches) : 8.31" x 17.72" x 19.02"

#### Weight

Start at 18 kg (39.7 lbs)

#### Color

Raven Black



<sup>1</sup> PRC only.

<sup>2</sup> Tech ready .

<sup>3</sup> To be available in 2022.

<sup>4</sup> ROW only.

<sup>5</sup> Available in limited markets.

<sup>6</sup> The actual transfer speed of the USB 3.2 will vary and, depending on many factors, such as the processing capability of host and peripheral devices, file attributes and other factors related to system configuration and your operating environments, will be slower than a speed of 20 Gbit/s.

<sup>7</sup> May vary depending on the type of DVI connector on the graphics card.

<sup>8</sup> Except Russia.

<sup>9</sup> Except Japan.

### CONNECTIVITY

#### WLAN

WiFi 6E (Intel® AX211 / Realtek 8852CE)<sup>5</sup>  
WiFi 6 (Intel® AX201 / MTK7921)

#### Bluetooth®

Bluetooth® 5.x

#### Audio

Nahimic Audio for Gamers  
7.1 Channel Surround Sound with S/PDIF

#### Input/Output (I/O) Ports

##### Front

2 x USB 3.2<sup>6</sup> Gen 1 (Type-A)  
2 x USB 2.0  
2 x Audio Jack (Microphone & Earphone)

##### Rear

1 x USB 3.2<sup>6</sup> Gen 2 x 2 (Type-C™), 20 Gbps  
1 x USB 3.2<sup>6</sup> Gen 2 (Type-A), 10 Gbps  
4 x USB 3.2<sup>6</sup> Gen 1 (Type-A), 5 Gbps  
2 x USB 2.0  
1 x 2.5G Gaming LAN (RJ45 Ethernet)  
6 x Audio (CEN/LFE Out / Surround Out / S/PDIF Out / Line In/Out / Line Out / Mic In)

#### GFX Output

DisplayPort™ 2.0 / HDMI™ 2.1 / DVI-D<sup>7</sup>

### PRELOADED SOFTWARE

#### For ROW

- Legion Vantage
- McAfee LiveSafe™<sup>8</sup>
- Microsoft Office Trial<sup>9</sup>
- XBOX Game Pass

#### For PRC

- Lenovo PC Manager
- Lenovo Zone
- Lenovo App Store

## LENOVO SERVICES

#### Legion Ultimate Support\*

Legion Ultimate Support is here to be your META - Most Effective Tactic Available. With one single point of contact, get 24/7 gamer-centric support from a team of IT experts who are gaming specialists and can help optimize your hardware & software settings to keep you productive all day and unbeatable at night.

#### Lenovo Smart Performance

Smart Performance Services within Lenovo Vantage will keep your system running at optimum performance and proactively fix issues that affect PC performance, internet performance, and security.

#### Lenovo Accidental Damage Protection

Avoid the hassles of unexpected damage & repair costs. With coverage for drops, spills, electric surges, and broken LCD screens, accidental damage protection makes it easy to repair to your PCs and ensures your device is up and running fast.

#### Lenovo Warranty Extensions (1-to-3 Years Duration)

Gain complete peace of mind by extending your warranty to minimize unexpected expenses and repair costs.

\* Available in NA, CAP, IN, JP only. Not available in EMEA, ANZ, and LAS.

## OPTIONS & ACCESSORIES



Legion K500  
Gaming Keyboard



Lenovo Legion  
M500 RGB  
Gaming Mouse



Lenovo Legion  
H300 Gaming  
Headset

## McAfee® LiveSafe™

Register McAfee® to enjoy these benefits in your FREE 30-day trial.

- Award-winning Antivirus
- Multi-device Compatibility
- Password Manager
- Identity Theft Protection
- Safe Web Browsing
- Free Customer Support

\* Example of Lenovo catalogue naming convention

Legion	T 7	3 4 I A Z	7
Sub-brand	Series Position	Screen size or volume (litre)	Platform Generation



WWW.LENOVO.COM

Lenovo reserves the right to alter product offerings and specifications at any time, without notice. Lenovo makes every effort to ensure accuracy of all information but is not liable or responsible for any editorial, photographic or typographic errors. All images are for illustration purposes only. For full Lenovo product, service and warranty specifications visit [www.lenovo.com](http://www.lenovo.com). Lenovo makes no representations or warranties regarding third party products or services. **Trademarks:** The following are trademarks or registered trademarks of Lenovo: Lenovo, the Lenovo logo, IdeaPad, IdeaCentre, yoga and yoga home. Microsoft, Windows and Vista are registered trademarks of Microsoft Corporation. Ultrabook, Celeron, Celeron Inside, Core Inside, Intel, Intel Logo, Intel Atom, Intel Atom Inside, Intel Core, Intel Inside Logo, Intel vPro, Itanium, Itanium Inside, Pentium, Pentium Inside, vPro Inside, Xeon, Xeon Phi, and Xeon Inside are trademarks of Intel Corporation in the U.S. and/or other countries. Other company, product and service names may be trademarks or service marks of others. Visit [www.lenovo.com/lenovo/us/en/safecomp/](http://www.lenovo.com/lenovo/us/en/safecomp/) periodically for the latest information on safe and effective computing. ©2021 Lenovo. All rights reserved.



Lenovo