

VINNOG86



Data sheet
V1.11

Contents

| | |
|---|----|
| 1. System Overview | 5 |
| 1.1 Architecture | 5 |
| 1.2 Applications | 6 |
| 1.3 Imaging features | 6 |
| 1.4 Standard features | 8 |
| 1.5 Language support | 9 |
| 2. Ergonomics | 9 |
| 2.1 Keyboard | 10 |
| 2.2 Image display screen | 10 |
| 2.3 Wheels | 10 |
| 2.4 Touch gestures | 10 |
| 2.5 System boot-up | 11 |
| 2.6 Comments | 11 |
| 2.7 Bodymark | 11 |
| 2.8 Peripherals | 11 |
| 2.9 Dimensions and Weight | 11 |
| 2.10 Electrical Power | 11 |
| 2.11 Operating Environment | 11 |
| 2.12 Storage & Transportation Environment | 11 |
| 3. Transducers | 11 |
| 3.1 Transducer Technology | 11 |
| 3.2 Transducer types | 12 |
| 3.3 Transducer selection | 12 |
| 4. Advanced Imaging controls | 17 |
| 4.1 VFusion | 17 |
| 4.2 VSpeckle | 17 |
| 4.3 VTissue | 17 |
| 4.4 3D/4D | 17 |
| 4.4.1 3D/4D HQ Grad | 17 |
| 4.4.2 Spatio-Temporal Image Correlation (STIC) (Optional) | 17 |
| 4.4.3 Inversion mode | 17 |
| 4.4.4 Magic Cut | 18 |
| 4.4.5 Free View | 18 |
| 4.4.6 Niche view | 18 |
| 4.4.7 Volume Contrast Imaging(VCI) | 18 |
| 4.4.8 3D Smart Face | 18 |
| 4.4.9 VNavIn 3D | 18 |
| 4.5 Next generation RF-based image processing | 18 |
| 4.6 Tissue Doppler (TD) | 19 |
| 4.7 Tissue Velocity Imaging (TVI) | 19 |
| 4.8 Stress Echo | 19 |
| 4.9 Strain Imaging | 19 |

| | |
|--|----|
| 4.10 Tissue Velocity M mode (TVM) | 19 |
| 4.11 Multi-angle M mode..... | 20 |
| 4.12 VAid(Vinno Artificial Intelligence Detection) (Optional)..... | 20 |
| 4.13 Curved M mode..... | 20 |
| 4.15 VShear (Shear Wave Elastography) (Optional) | 20 |
| 5. Imaging modes | 20 |
| 5.1 2D Imaging..... | 20 |
| 5.2 Harmonic Imaging..... | 21 |
| 5.3 M mode..... | 21 |
| 5.4 Color Doppler mode | 22 |
| 5.5 Power Doppler mode | 22 |
| 5.6 Pulsed Wave (PW) Doppler..... | 23 |
| 5.7 Continuous Wave Doppler (CWD)..... | 23 |
| 5.8 Elastography imaging | 24 |
| 5.9 Contrast imaging | 24 |
| 5.10 Zone imaging..... | 24 |
| 5.11 3D/4D | 24 |
| 5.12 PView | 25 |
| 5.13 TView | 26 |
| 5.14 Auto | 26 |
| 5.15 Tissue Doppler Imaging (TD) | 26 |
| 5.16 Tissue Velocity Imaging (TVI)..... | 26 |
| 5.17 Tissue Velocity M mode (TVM)..... | 27 |
| 6. Touch Panel Interface | 27 |
| 6.1 2D mode | 27 |
| 6.2 M Mode | 28 |
| 6.3 CF mode | 28 |
| 6.4 PW/CW mode..... | 28 |
| 6.5 3D mode | 29 |
| 6.6 4D mode | 29 |
| 7. System Feature | 30 |
| 7.1 Display modes | 30 |
| 7.2 Display annotation..... | 30 |
| 7.3 Simple User Operation Interface | 31 |
| 7.4 Cineloop | 31 |
| 7.5 Quick save feature | 31 |
| 7.6 Physio (Optional) | 31 |
| 7.7 Archive | 32 |
| 7.8 Report | 32 |
| 7.8 VReport (optional) | 32 |
| 7.9 Connectivity | 32 |
| 7.10 Probes/application | 33 |
| 7.11 Safety Conformance | 33 |
| 8. Measurement and Analysis..... | 34 |
| 8.1 Measurement in different modes | 34 |

| | |
|--|-----|
| 8.1.1 Generic Measurement in 2D mode..... | 34 |
| 8.1.2 Generic Measurement in CFM mode | 34 |
| 8.1.3 Generic Measurement in M mode | 34 |
| 8.1.4 Measurement in PW mode | 34 |
| 8.2 Measurement in different applications | 35 |
| 8.2.1 Abdominal Measurement | 35 |
| 8.2.2 Small Part Measurement | 35 |
| 8.2.3 Vessel Measurement | 35 |
| 8.2.4 Gynecology Measurement..... | 35 |
| 8.2.5 Urology Measurement | 36 |
| 8.2.6 Pediatric Measurement | 366 |
| 8.2.7 Obstetrics Measurement | 366 |
| 8.2.8 Cardiac Measurement..... | 366 |
| 8.2.9 Auto NT (Nuchal Translucency) measurement | 36 |
| 8.2.10 Auto IMT (Intima-Media Thickness) measurement..... | 36 |
| 8.2.11 Live IMT (Intima-Media Thickness) measurement | 36 |
| 8.2.12 Auto IT (Intracranial translucency) measurement..... | 36 |
| 8.2.13 Auto Follicle(2D/3D)(Optional) * | 37 |
| 8.2.14 Smart 3D Volume Measurement(Optional) * | 377 |
| 8.2.15 VAim OB measurement..... | 377 |
| 8.2.16 VAim Hip measurement | 37 |
| 8.2.17 VAim Follicle (2D) measurement (Optional) *..... | 37 |
| 8.2.18 VAid (Vinno Artificial Intelligent Diagnosis)(Optional) * | 37 |

VINNO G86

Ultrasound System Specifications

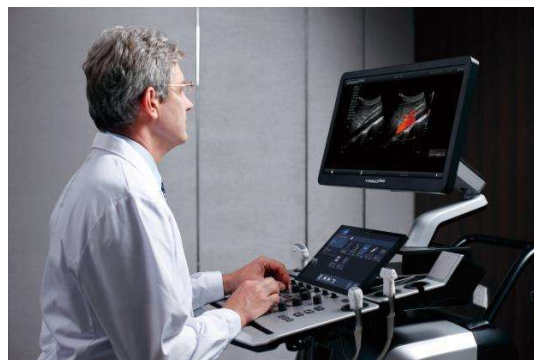
Dedicated premium ultrasound system VINNO G86 supports you in clinical decision-making and elevates trust in diagnostic confidence by:

- Premium image quality, thanks to the insightful VLucid platform
- Powered by Artificial intelligent technologies, helps to make clinical decisions quickly and confidently
- New benchmarks in 3D/4D and slice images
- Specific ultra high frequency and wide footprint breast probe
- 23.8" monitor to enlarge multiple images with high quality

1. System Overview

1.1 Architecture

- VINNO G86 brings a confident diagnostic experience with the extraordinary processing power of our breakthrough VLucid Platform, to deliver superior image quality, thanks to its exceptional intelligent architecture
- The new generation VLucid platform with sophisticated image processing technologies makes G86 an extraordinary visualization unit, which



provides excellent penetration and structure visualization.

- Empowered by the insightful VLucid platform, the G86 integrates the new adaptive beam correction technology with high-performance hardware architecture, delivering the extraordinary image quality with great clarity, superior consistency and excellent penetration.
- New adaptive beam correction technology, eliminating the noise caused by incoherence and transducer crosstalk, and at the same time increasing the useful information amplitude, providing excellent signal penetration and good signal to noise ratio.
- VLucid Doppler Technology obtain the diffusion and flow information of each beam of the scatterer, which greatly improves the detection power of blood flow and the dynamic expression
- Zone Imaging technology can obtain

high resolution and good penetration in the whole image zone through the adaptive dynamic beam control from the near field to the far field

- Up to 25MHz next generation digital broadband and high resolution acoustic beamforming
- VShear is a non-invasive method that detects the velocity of shear waves propagating through the target area and provides quantitative tissue characteristic information
- VLuminous Flow provides the color Doppler flow innovatively in a 3D view with excellent sensitivity, which can help understand the structure of blood flow and small vessels intuitively
- Sync ROI enables the width of 2D scan area is synchronized with the CF ROI, which effectively improves the frame rate
- Diverse customized tools make G86 a truly elite unit, which enhances efficiency dramatically
- Zscore analysis, provide a new way for fetal heart evaluation
- Support to export 3D data for 3D printer
- Support multiple DICOM server configuration
- Background transfer, supports background export without interrupting the actual scan
- VReport, a customer-centric tool for report templates design, makes the

whole report procedure more smooth and individual

- Customized user interface, allows user to change the position of buttons on the touch screen, also the size of 'probe&app' UI window is adjustable
- VWork, an intelligent feature, which enables users to configure workflows for every application scenario. This leads to easy and effective adherence to a department protocol and saves operation time to a great extent

1.2 Applications

- Abdomen
- Obstetric
- Gynecology
- Cardiology
- Urology
- Vascular
- TCD
- Small Parts
- Pediatrics
- Intra-operative

1.3 Imaging features

- 2D grayscale imaging
- Harmonic imaging both in tissue harmonic and pulse inversion harmonic technologies
- VFusion, RF-based directional-enhanced information

compounding

- VSpeckle, specialized and adaptive imaging processing to remove speckle noise artifacts and enhance tissue edge for clarity and accuracy
- VTissue, the advanced adaptive image processing to compensate for sound and speed variation in different tissue *
- VFlow, adaptive color flow filter to increase the sensitivity of blood flow
- Auto imaging optimization
- Easy Comparative Function to compare previous exam
- M mode
- Power Doppler imaging
- Directional Power Doppler imaging
- Pulse wave Doppler imaging
- Duplex 2D/PW Doppler/M-Mod
- Triplex 2D/Color/PW Doppler
- High PRF pulsed wave Doppler
- Continuous wave Doppler
- RF-based Zoom
- FULL screen imaging to enlarge imaging size
- Dual real time imaging without compromising imaging size
- Multi Angle M-mode with 360 degree rotation (Optional)
- PView for panoramic imaging (Optional)
- TView for trapezoidal imaging
- Elastography imaging
- Contrast Imaging(CBI)(Optional)*
- Free 3D * (optional)

- 3D/4D
- HQ (Optional)
- HQ Silhouette
- VNavIn 3D
- Spatio Temporal Image Correlation (STIC) (Optional)*
- Tomographic display (MCUT)
- Inversion mode
- Magic Cut
- Smart Touch 3D/4D operation
- Multiline- Free View
- Volume Contrast Imaging(VCI)
- Niche view
- Stress echo
- Strain Imaging
- VAid, an artificial intelligent detection tool for breast imaging* (optional)
- Auto NT(Nuchal translucency)
- Shear wave Elastography imaging(Vshear), a non-invasive method which can calculate tissue elastic modulus(optional)
- VLuminous flow, a feature which shows the blood flow in a 3-D view with excellent sensitivity
- Curved M mode, user can draw any curved sample line freely and get corresponding results
- Sync B/C width, the width of B mode interest area is always be the same with the CF mode
- Multi-line Angular M-Mode, Up to 4 sample lines
- Live IMT, display intima-media

thickness in real time

- VAim (Vinno Artificial Intelligent Measurement) for OB、Follicle、Hip、pelvic
- 3D Smart Face, an intelligent tool for fetal face optimization
- Auto IT, automatic measurement of Intracranial translucency
- Navigation mode, combine ultrasound image with CT, MRI image
- PWV, a real-time, multi-point, RF tracking at single imaging site of the carotid artery intima media complex with high precision and generates arterial distension/tracking waveform. Calculates PWV to assess the arterial stiffness and risk stratification of arteriosclerosis(optional)
- AMAS, a two-imaging site protocol, time delay between ECG R to foot (inflection point) of the Common Carotid artery and Femoral artery PW Doppler is auto calculated. Key-in the distance between Carotid and Femoral artery, system calculates the cf PWV(optional)

1.4 Standard features

- Up to 25Mhz high frequency in system platform.
- Up to 23MHz' s probes are supported

- Up to 9,000,000 system processing channel
- Up to 40 cm scanning depth
- Up to 1500 seconds standard cine storage
- Can support matrix probe
- Can support TEE probe
- Up to 3000 frame per second in B mode, up to 44 frame per second in 4D mode
- 1T HDD
- 120 GB/250 GB/512 GB SSD for quick boot up (Optional)
- Integrated DVDRW
- Integrated black/white thermal video printer slot
- Patient information database
- Image archive on hard drive
- Quick store to USB memory stick
- Quick store to hard drive
- Vascular calculations
- Cardiac calculations
- OB calculations and tables
- Gynecological calculations
- Urological calculations
- Renal calculations
- Volume calculations
- Barcode reader for patient information input
- Wireless networking for easy data sharing, storage and printing
- Bluetooth for image data transfer
- Image data transfer directly by E-Mail with network access
- Up-to-date connectivity and data

management solutions, wireless (optional), LAN, Bluetooth, E-Mail, integrated database

- DICOM compatibility *
- 5 probe ports
- 5 USB ports
- 8 TGC slides
- Average 4 multiple adjustable frequency in every probe and mode
- Up to 512 line density
- 1 DVI interface
- 1 Audio in interface; 1 Audio out interface
- 1 Speaker interface
- 1 RJ45 interface

1.5 Language support

- Software: Chinese, English, German, Greek, Malay, Portuguese, Romanian, Spanish, Swedish, Norwegian, Danish, Finnish, French, Polish, Russian, Uighur, Italian, Czech, Hungarian, Cambodia
- Keyboard input: Chinese, English, German, Greek, Malay, Portuguese, Romanian, Spanish, Swedish, Polish, Norwegian, Danish, Finnish, French, Russian, Italian, Czech, Cambodia
- Control panel overlay: English
- User manual: Chinese, English, German, Russian, Portuguese, Spanish, Italian, French

2. Ergonomics

- Unique human oriented design for comfort and convenience
- Fully articulating 21.5inch/23.8inch high resolution flat panel display with nearly infinite positioning adjustments
- Up to 250mm up/down operation panel, controlled by electric motor
- Fully articulating control panel including height, swivel+(-)65 degree and front-back 150mm slide adjustment
- Integrated footrest
- Integrated foot switch for configurable function, such as Freeze, store etc
- Easy access DVD media drive
- 5 easy access transducer ports
- 5 transducer holders (removable for easy cleaning)
- Automatic warming gel bottle holders
- Integrated touchable alphabetic keyboard
- Simple, easy and effective cable management structure

2.1 Keyboard

- Highly sensitive 13.3 inch LED technology touch panel
- Resolution: 1600*900 pixels
- Intuitive, configurable and touchable interactive operation interface
- Ergonomic hard keys for general ultrasound operations
- 8 TGC slides, functionality at any depth
- Backlight keys
- Independent rotation and up/down adjustment
 - Swivel range: ± 60 degrees
 - Down/up range: 250 mm
 - Front/back range: 150 mm

2.2 Image display screen

- 21.5/23.8 inch high resolution LED technology, pixel resolution: 1920x1080
- Brightness, contrast and color temperature adjustment
- View angle: $-178^{\circ} \sim 178^{\circ}$
- Number of color: 16.7M
- Adjustable Gamma curve optimization for dedicated applications
- Multifunctional support arm design
- Independent tilt and swivel adjustment
 - Swivel range:

± 180 degrees

- Tilt range: $-20-90$ degrees
 - Up/down : 250 ± 80 mm

2.3 Wheels

- Diameter: 125mm
- Front castor (2 ea): Total lock
- Rear castor (2 ea): Total lock

2.4 Touch gestures

- Swipe down/up: display/remove projected image on touch screen
- Swipe horizontally: page up/down or review images/cine loops one by one
- Swipe from left edge to right: display hidden menu on projected image.
- Image parameter adjustment
- Measurement on projected image on touch screen
- PAN/Zoom in/out real & freeze image on touch screen
- Rotate or erase on projected 3D/4D image on touch screen
- User defined gestures using two fingers for more functions, such as freeze, save, print, activate specific imaging modes, measurements, and some other special functions

2.5 System boot-up

- Boot-up from shut-down: ≤ 62 sec
- Shut-down: ≤ 12 sec

2.6 Comments

- Supports text input and arrow
- Support finger-draw comments
- Adjustable text size and arrow size
- Covers various application
- User customized

2.7 Bodymark

- More than 215 bodymarks for versatile application
- User customizable

2.8 Peripherals

- B&W thermal video printer: Sony UP-D898MD
- Color thermal video printer: Sony UP-D25MD (optional)
- Memory stick (optional)

2.9 Dimensions and Weight

- Height: 1350-1680mm
- Width: 605mm
- Depth: 880-1030mm
- Net Weight: 90kg

2.10 Electrical Power

- Voltage: 100-240V AC
- Frequency: 50/60Hz
- Power: Max. 700VA for console only

2.11 Operating Environment

- Ambient temperature: $10-40^{\circ}$ C
- Relative humidity: 30-75%
- Atmospheric pressure: 700hPa-1060hPa

2.12 Storage & Transportation Environment

- Ambient temperature: $-5-50^{\circ}$ C
- Relative humidity: 10%-80% (no condensation)
- Atmospheric pressure: 700hPa-1060hPa

3. Transducers

3.1 Transducer Technology

- Xcen technology for wideband

frequency

- Pure wave technology for high resolution imaging
- Unique and high technical Xcen probe connector to adapt all different type of VINNO product models

3.2 Transducer types

- Convex array
- Linear array
- Phase array
- 4D probe
- Endocavity probe
- Micro-convex array

3.3 Transducer selection

- Electronic switching of transducers
- User customizable imaging presets for each transducer and application
- Automatic dynamic receiving focus in all transducers
- Multiple adjustable transmit focal zone, up to 8 focal zone

G2-5C Broadband Curved Array

- Field of view: 66 degree
- Convex radius: 50mm
- Application: abdomen, OB/Gyn, urology, pediatric
- B mode Frequency : 1.0 -8.0 MHz

- Har Frequency: Pen/Gen/Res
- Physical Footprint:
68.5mm x 27mm
- Center frequency: 4.0 MHz
- Pulsed wave Doppler, color Doppler, power Doppler, harmonic
- Multi-imaging frequency setting in 2D, Harmonic, color Doppler and Wave Doppler modes
- Reusable biopsy guide available

S2-9C Single crystal Curved Array

- Single Crystal technology
- Field of view: 75 degree
- Convex radius: 60mm
- Application: abdomen, ob/gyn, urology, pediatric
- B mode Frequency : 1.0-8.0MHz
- Har Frequency: Pen/Gen/Res
- Physical Footprint:
79mm × 31mm
- Center frequency: 5.0 MHz
- Pulsed wave Doppler, color Doppler, power Doppler, harmonic
- Multi-imaging frequency setting in 2D, Harmonic, color Doppler and Wave Doppler modes

X2-6C Single crystal Curved Array

- Field of view: 75 degree
- Convex radius: 60mm
- Application: abdomen, ob/gyn, urology, pediatric
- B mode Frequency : 1.0-8.0MHz
- Har Frequency: Pen/Gen/Res

- Physical Footprint: 78mm × 28mm
- Center frequency: 4.0MHz
- Transducer elements:192
- Pulsed wave Doppler, color Doppler, power Doppler, harmonic
- Multi-imaging frequency setting in 2D, Harmonic, color Doppler and Wave Doppler modes

S1-8C Single crystal Curved Array

- Single Crystal technology
- Field of view: 75 degree
- Convex radius: 60mm
- Application: abdomen, ob/gyn, urology, pediatric
- Center frequency: 4.0MHz
- B mode Frequency: 1.5-7.5 MHz
- Har Frequency: Pen/Gen/Res
- Physical footprint: 78mm × 27.2mm
- Transducer elements:192
- Pulsed wave Doppler, color Doppler, power Doppler, harmonic
- Multi-imaging frequency setting in 2D, Harmonic, color Doppler and Wave Doppler modes
- Reusable biopsy guide available

D3-6C broadband curved array volume probe

- Field of view: 78 degree
- Convex radius: 40mm
- Application: abdomen, OB/Gyn, urology
- B mode Frequency : 2.0-8.0MHz
- Har Frequency: Pen/Gen/Res

- Physical Footprint: 82mm × 53mm
- Center frequency: 4.5 MHz
- Pulsed wave Doppler, color Doppler, power Doppler, harmonic, 3D/4D grayscale and 3D color modes
- Multi-imaging frequency setting in 2D, Harmonic, color Doppler and Wave Doppler modes

D3-6CX broadband curved array volume probe

- Field of view: 75 degree
- Convex radius: 40mm
- Application: abdomen, OB/Gyn, urology
- B mode Frequency: 2.0 – 8.0 MHz
- Har Frequency: Pen/Gen/Res
- Physical footprint: 65mm × 45.2mm
- Center frequency: 4.5 MHz
- Pulsed wave Doppler, color Doppler, power Doppler, harmonic , 3D/4D grayscale, 3D color
- Multi-imaging frequency setting in 2D, 3D/4D, Harmonic, color Doppler and Wave Doppler modes

G4-9M broadband micro convex array

- Field of view: 138 degree
- Convex radius: 12mm
- Application: pediatric, abdomen, cardiac
- B mode Frequency : 3.0-10.0MHz
- Har Frequency: Pen/Gen/Res
- Physical Footprint:

34mm × 29mm

- Center frequency: 6.5MHz
- Pulsed wave Doppler, color Doppler, power Doppler, harmonic
- Multi-imaging frequency setting in 2D, Harmonic, color Doppler and Wave Doppler modes

D4-9E broadband micro convex 4D endocavity array

- Field of view: 146 degree
- Convex radius: 10mm
- Application: Ob/Gyn, urology
- B mode Frequency: 3.0 - 10.0MHz
- Har Frequency: Pen/Gen/Res
- Physical Footprint: 24.7mm x 23.7mm
- Center frequency: 6.5MHz
- Transducer elements:148
- Pulsed wave Doppler, color Doppler, power Doppler, harmonic, 3D/4D grayscale, 3D color
- Multi-imaging frequency setting in 2D, 3D/4D, Harmonic, color Doppler and Wave Doppler modes

X4-9E broadband micro convex endocavity array (crank and straight handle)

- Field of view: 180 degree
- Convex radius: 8.8 mm
- Application: ob/gyn, urology
- B mode Frequency: 4.0-10.0MHz
- Har Frequency: Pen/Gen/Res

- Physical Footprint: 19.15mm x 17.8mm
- Center frequency: 6.5 MHz
- Transducer elements:192
- Pulsed wave Doppler, color Doppler, power Doppler, harmonic
- Multi-imaging frequency setting in 2D, Harmonic, color Doppler and Wave Doppler modes

X4-12L broadband linear array

- Fine pitch, high resolution
- Applications: vascular, small parts
- Aperture size: 38.4mm
- B mode Frequency : 3.0 -13.0MHz
- Har Frequency: Pen/Gen/Res
- Physical Footprint: 50.5mm × 17mm
- Center frequency: 7.3MHz
- Transducer elements:192
- Pulsed wave Doppler, color Doppler, power Doppler, harmonic
- Multi-imaging frequency setting in 2D, Harmonic, color Doppler and Wave Doppler modes
- Reusable biopsy guide available

X6-16L broadband linear array

- Fine pitch, high resolution
- Applications: vascular, small parts
- Aperture size: 38.4mm
- B mode Frequency: 3.0 -18.0MHz
- Har Frequency: Pen/Gen/Res

- Physical Footprint:
50.5mm × 20mm
- Center frequency: 10MHz
- Transducer elements: 192
- Pulsed wave Doppler, color Doppler, power Doppler, harmonic
- Multi-imaging frequency setting in 2D, Harmonic, color Doppler and Wave Doppler modes
- Reusable biopsy guide available

I7-18L broadband linear array (Hock stick)

- Fine pitch, high resolution
- Applications: vascular, small parts, Hock stick
- Aperture size: 25.6mm
- B mode Frequency: 6.0-18.0MHz
- Har Frequency: Pen/Gen/Res
- Center frequency: 8.5MHz
- Pulsed wave Doppler, color Doppler, power Doppler, harmonic
- Multi-imaging frequency setting in 2D, Harmonic, color Doppler and Wave Doppler modes

X10-23L broadband linear array

- Fine pitch, high resolution
- Applications: small parts
- Aperture size: 12.8mm
- B mode Frequency : 10.0-23.0MHz
- Har Frequency: Pen/Gen/Res
- Center frequency: 16.0MHz
- Pulsed wave Doppler, color Doppler, power Doppler, harmonic

- Multi-imaging frequency setting in 2D, Harmonic, color Doppler and Wave Doppler modes

I4-11T broadband linear array

- Fine pitch, high resolution
- B mode Frequency : 4.0-11.0Mhz
- Har Frequency: Pen/Gen/Res
- Physical Footprint:
48mm × 15mm
- Center frequency: 7.3MHz
- Pulsed wave Doppler, color Doppler, power Doppler, harmonic
- Multi-imaging frequency setting in 2D, Harmonic, color Doppler and Wave Doppler modes

G1-4P phased array

- Applications: cardiac, abdomen
- Field of view 124 degree
- Aperture size: 17.92mm
- B mode Frequency : 1.0-5.0Mhz
- Har Frequency: Pen/Gen/Res
- Physical Footprint:
34.5mm × 28.5mm
- Center frequency: 2.5MHz
- Pulsed wave Doppler, continuous wave Doppler, color Doppler, power Doppler, harmonic
- Multi-imaging frequency setting in 2D, Harmonic, color Doppler and Wave Doppler modes
- Reusable biopsy guide available

S1-6P Single crystal phased array

- Single Crystal technology
- Applications: cardiac, abdomen
- Aperture size: 15.36mm
- Field of view: 140 degree
- B mode Frequency : 1.0-8.0Mhz
- Har Frequency: Pen/Gen/Res
- Physical Footprint:
34.2mm x 28.7mm
- Center frequency: 3.5MHz
- Transducer elements: 96
- Multi-imaging frequency setting in 2D, Harmonic, color Doppler and Wave Doppler modes
- Reusable biopsy guide available

U5-15L broadband linear array

- Fine pitch, high resolution
- Applications: small parts, specially for breast, vascular
- Aperture size: 51.2mm
- B mode Frequency : 5.0 -15.0Mhz
- Har Frequency: Pen/Gen/Res
- Physical Footprint:
65.5mm × 26.2mm
- Center frequency: 8.5MHz
- Transducer elements:256
- Pulsed wave Doppler, color Doppler, power Doppler, harmonic
- Multi-imaging frequency setting in 2D, Harmonic, color Doppler and Wave Doppler modes

X9-22L broadband linear array

- Fine pitch, high resolution
- Applications: msk,nerve,small

parts

- Aperture size: 28.8mm
- B mode Frequency : 9.0-22.0MHz
- Har Frequency: Pen/Gen/Res
- Physical Footprint:
49.5mm x 22mm
- Center frequency: 15.0MHz
- Transducer elements:192
- Pulsed wave Doppler, color Doppler, power Doppler, harmonic
- Multi-imaging frequency setting in 2D, Harmonic, color Doppler and Wave Doppler modes

G3-10PX phased array

- Application: pediatric cardiology, abdomen
- Aperture size: 15.36 mm
- Field of view: 110 degree
- B mode Frequency: 3.0-10.0Mhz
- Har Frequency: Pen/Gen/Res
- Physical Footprint:
33mm x 33mm
- Center frequency: 5.0MHz
- Pulsed wave Doppler, color Doppler, power Doppler, harmonic
- Multi-imaging frequency setting in 2D, Harmonic, color Doppler and Wave Doppler modes

G4-12P broadband phased array probe

- Aperture size: 9.7mm
- Field of view: 110 degree
- Application: pediatric cardiology, abdomen

- Center frequency: 7.3MHz
- B mode Frequency: 4.0-12.0MHz
- Har Frequency: Pen/Gen/Res
- Physical footprint: 22mm × 20mm

4. Advanced Imaging controls

4.1 VFusion

- Available on all transducers and for 2D, 3D/4D (except phase array probe)
- Up to 5 levels of directional imaging fusion to enrich information
- Operate in conjunction with VSpeckle, harmonic imaging

4.2 VSpeckle

- Available on all transducers and for 2D, 3D/4D
- Virtually eliminate speckle noise artifact and dynamically enhances tissue margins
- Selectable multiple levels of speckle noise reduction and smoothing
- Operates in conjunction with VFusion and harmonic imaging

4.3 VTissue

- Advanced imaging processing to adapt to the speed of the ultrasound variation in different tissue

- Improved detail resolution and conspicuity of lesions
- Presentable sound and speed in different applications
- One touch operation to ease diagnosis
- Better detection in diffuse lesions of organs

4.4 3D/4D

4.4.1 3D/4D HQ Grad

- Amazing high image quality
- Extreme realistic rendering images
- Similar operation as normal rendering

4.4.2 Spatio-Temporal Image Correlation (STIC) (Optional)

- Visualize the fetal heart or an artery
- One complete heart cycle represented
- Using 3D static acquisition
- Only available on OB application

4.4.3 Inversion mode

- This render mode is used to display anechoic structures such as vessels
- It invert the gray values of the rendered image, such as black image

information become white and vice versa

4.4.4 Magic Cut

- Ability to edit images, make possible to cut away structure obstructing the view in the ROI
- Several cutting methods available
- Have quality index to indicate if there is proper external force
- Extend MagicCut to support Quad display

4.4.5 Free View

- Provide any plane view to visualize the internal tissue information
- Improve the contrast resolution to facilitate the detection of diffuse lesions in organs

4.4.6 Niche view

- Display 3 orthogonal planes centered on ROI
- Use Depth to translate the selected plane
- Each imaging plane or Niche image can be selected using image reference

4.4.7 Volume Contrast Imaging(VCI)

- Increases the tissues demarcation inside the adjustable slab
- Renders images with improved

contrast resolution

4.4.8 3D Smart Face

An intelligent tool for fetal face optimization. This tool detects the fluid/tissue interface and smartly removes noise in front of the baby inside the ROI, to obtain an optimal baby face.

- Use Auto key on the keyboard to remove the obstacle in front of the baby
- Only works on 3D Render
- Can not use this feature together with MagicCut

4.4.9 VNavIn 3D

- By producing a different perspective in 3D imaging, VNavIn technology enables clinicians to assess anatomy within the body, bringing a whole new dimension to the modality
- VNavIn 3D can be used in body cavity which surrounded by fluid, like endometrium, vascular, obstetrics or any other fluid-filled structure
- This feature can be performed automatically or manually

4.5 Next generation RF-based image processing

- Available on all imaging transducers

in 2D grayscale modes

- Virtually eliminates speckle noise artifact and dynamically enhance tissue edge
- Operates with other real-time processing algorithms

4.6 Tissue Doppler (TD)

- Present wall motion spectrum by using Doppler principle
- Provide wall motion direction and velocity information

4.7 Tissue Velocity Imaging (TVI)

- Color codes the velocities in tissue
- Present tissue color imaging by using Doppler principle
- This color image is overlaid onto the 2D image
- Captures low flow but high amplitude signals associated with wall motion

4.8 Stress Echo

- Stress echo is a non-invasive, dynamic evaluation of myocardial structure and its function under an external stress(exercise or pharmacology)
- 12 Ready to use templates (max 8 stages * 6 views) Editable

- User definable template
- Re-arrange & Select default template
- 8 View names available
- 9 Stage names are available (can add user defined stage name)
- One Touch Shuffle (Stage / View)
- Touch & Compare any view of stage
- Systole only review

4.9 Strain Imaging

- Auto-ROI (after selecting Mitral Valve Plane)
- Adjust Segment-wise(Longitudinal strain)
- Adjust Segment-wise and Rotate whole ROI (Radial & Circumf. Strain)
- ECG to select heart cycle
- View based Bulls Eye view
- Result type (Peak Strain or Peak Time)Parameter type (L Strain, R Strain& C Strain)

4.10 Tissue Velocity M mode (TVM)

- Color codes the velocities in tissue
- Present wall motion spectrum based on tissue moving
- This color image is overlaid onto the 2D image
- Captures low flow but high

amplitude signals associated with wall motion

- Color MLAM is available
- TVI &M mode is available

4.11 Multi-angle M mode

- Sample on moving tissue from multi-angle
- Present wall motion spectrum based on tissue moving

4.12 VAid(Vinno Artificial Intelligence Detection) (Optional)

- Available on all linear transducers for 2D
- An artificial intelligent detection tool for breast imaging
- Works in real-time detection, as well as on the stored (single or cine) images

4.13 Curved M mode

Draw the route of the sample line freely and obtain the corresponding anatomical M-mode. This might be helpful to obtain myocardial wall motion.

- Color curved M mode is available
- TVI &M mode is available

4.14 Multi-line Angular M-Mode

- Up to 4 lines

4.15 VShear (Shear Wave Elastography) (Optional)

- Available on linear transducers and convex probe
- A non-invasive method which can detect tissue hardness by calculating the shear wave propagation velocity and elastic modulus

5. Imaging modes

5.1 2D Imaging

- Pre-defined ATGC (adaptive temporal gain compensation) curves optimized for consistently excellent imaging
- Display format: Single, Dual, Quad
- B/M acoustic output: 0-100%
- Select between 1 to 8 transmit focal zones
- Reverse function: on/off
- 2D optimization: on/off
- Centerline: on/off
- L/R flip and U/D flip: on/off
- VFusion : ≥ 7 steps
- VSpeckle : ≥ 13 steps
- Harmonic imaging both tissue

harmonic and phase inversion

- Cineloop image review
- Selectable 2D line density
- Dual imaging with independent cineloop
- 256(8 bit) gray level
- Up to 8 focus zone adjustable
- Multiple color maps with chroma imaging
- FULL screen imaging to larger image size
- Multi frequency: ≥ 5 levels, probe dependent
- Gray filter: ≥ 7 steps
- Persistence: ≥ 8 steps
- Selectable image angles, probe Dependent
- Gain: 0-100%
- Dynamic range: 30-280 db
- VSharpen(enhance edge contrast) : ≥ 8 steps
- Smooth(improve spatial resolution): ≥ 11 steps
- EdgeEnhance (improve detail information and contrast): ≥ 6 steps
- VNear to enhance SNR of near field, 4 steps
- Gray Map: ≥ 23 types
- Tint Map: ≥ 24 types
- TGC: 8 slides on control pannel
- SGC: 8 ponds on touch pannel
- Zone imaging: ≥ 3 steps
- TI heat index: TIB, TIS, TIB
- Rotation:
0° ,90° ,180° ,270°

- PAN/Zoom(up to 10 \times) on Real Time/Freez mode

5.2 Harmonic Imaging

- Supports both tissue harmonic and phase inversion imaging (transducer and frequency dependence)
- Second harmonic processing to reduce artifacts and improve image clarity
- Maximize detail resolution and enhance contrast
- Available on all imaging transducers
- Extends high performance imaging capabilities to all patient body types

5.3 M mode

- Selectable sweeping rates, ≥ 10 steps
- Time marks: 0.025 – 0.5 second
- Selectable display format prospective or retrospective (V2/3, V1/3, V1/2, H1/2, H3/4, full screen)
- Chroma colorization with multiple color maps
- Cineloop review for retrospective analysis of M-mode data
- 256 gray levels
- Acoustic output: 10%-100%

- Gray filter: ≥ 6 steps
- Dynamic range: 108db-128db, 2db/step
- Vsharpen: ≥ 8 steps
- Gray Map: ≥ 23 types
- Tint Map: ≥ 24 types
- Gain: 0-100%
- Color M mode: available
- MultiAngle: available

5.4 Color Doppler mode

- Available on all imaging transducers
- Automatically adapts transmit and receive bandwidth processing based on the color box position
- Cineloop review with full playback control
- Steering on linear array transducers
- Color flow M mode display for tissue motion and flow velocity(optional)
- Reverse function: on/off
- Selectable baseline, line density, flash reduction, persistence, maps, frequency, PRF, wall filter, packet size, color level, sensitivity, focus position, acoustic power, and smooth
- FULL screen imaging to larger image size
- L/R flip and U/D flip: on/off
- Frequency: ≥ 5 steps, depend on probes
- Baseline: 0-100%

- Acoustic power: 10%-100%
- Line density: ≥ 5 steps
- Flash reduction: ≥ 6 steps
- Persistence: ≥ 20 steps
- Color Map: ≥ 33 types
- Smooth : ≥ 7 steps
- Sensitivity: ≥ 6 steps
- Transparency: ≥ 6 steps
- Color level: ≥ 14 steps
- Packet size: ≥ 8 steps
- Reverse function: on/off
- Color gain: 0-100%
- Adjustable region of interest
- Region of interest
- Baseline invert
- Simultaneous mode during PW mode
- Zoom

5.5 Power Doppler mode

- High sensitive mode for small vessel visualization
- Available on all transducers
- Cineloop review
- Display format: Single, Dual, Quad
- Selectable baseline, line density, flash reduction, persistence, maps, frequency, PRF, wall filter, packet size, color level, sensitivity, focus position, acoustic power, and smooth
- Color maps: ≥ 24 types
- Color levels: ≥ 11 steps

- Sensitivity: ≥ 5 steps
- Smooth: ≥ 7 steps
- Persistence: ≥ 20 steps
- Individual controls for gain
- Adjustable region of interest

5.6 Pulsed Wave (PW) Doppler

- Ultra high resolution spectral FFT rate
- Angle correction with automatic velocity scale adjustment
- Normal, invert display around horizontal zero line
- Auto optimization: on/off
- Invert: on/off
- Selectable display format prospective or retrospective (V2/3, V1/3, V1/2, H1/2, H3/4, full screen)
- Selectable gray filter, dynamic range, frequency, PRF, wall filter, baseline, angle correct, sample volume
- Gray filter: ≥ 6 steps
- Dynamic range: 108db-128db
- Baseline: 5%-95%
- Sample volume: 0.5mm-10mm
- Angle correct: $\pm 80^\circ$
- Sensitivity: ≥ 21 steps
- Audio Volume: 1-20
- Spectrum Optimize: ≥ 28 steps
- Gray map: ≥ 13 types
- Tint map: ≥ 11 types
- Selectable sweep speeds: ≥ 10

steps

- PW acoustic output: 5%-100%
- Trace direction: above, below, above and below
- Trace type: max, mean, max and mean
- Cardiac cycle: 1-5
- Selectable low frequency signal filtering with adjustable wall filter settings
- Selectable grayscale curve for optimal display
- Selectable chroma colorization maps
- Auto function to optimize spectral Doppler displ.
- Digitally enhanced stereo output
- 256 gray levels
- Post-processing in frozen mode includes map, baseline, invert and chroma
- Simultaneous or duplex mode of operation
- Simultaneous 2D, color Doppler, pulsed Doppler
- High PRF capability in all modes including duplex and triplex

5.7 Continuous Wave Doppler (CWD)

- User can measure distance and area
- Measurement can be made on

individual frames during cineloop review

- Maximum velocity range: 19m/sec
- Available on phased array probes

5.8 Elastography imaging

- Shows the spatial distribution of tissue elasticity properties in a region of interest to estimate the strain before and after tissue distortion caused by external force
- The strain estimation is scaled by color to have smooth distribution display
- Have quality index to indicate if there is proper external force
- Winsize: 0,1,2,3,4
- Overlap: 0,1,2,3,4
- Dynamic range: 0-10
- Sensitivity: 0,1
- Transparency: ≥ 13 steps
- Smooth: ≥ 7 steps
- Line density: ≥ 7 steps
- Persistence: ≥ 20 steps
- Map: EI0
- Display format: Single, Dual, Quad

5.9 Contrast imaging

- Support contrast imaging in

both 2D and 3D volume

- By contrast agent, imaging is enhanced within vessel which agent flow
- Have one button push to destroy the agent. Useful in the bubble wash-in characteristics of anatomy being scanned

5.10 Zone imaging

- full focus on whole image
- obtain high resolution and good penetration in the whole image zone through the adaptive dynamic beam control from the near field to the far field

5.11 3D/4D

- 3D/4D rotation
 - Grayscale imaging controls
 - Selectable rendering
- Approaches: HQ Surface, HQ Grad, HQ Silhouette, Surf Texture, Surf Smooth, Grad Light, Surf HDR, Trans Max, X-ray, Transp Min, Light
- Unique high quality rendering algorithm
 - Review volume
 - Volume Angle: 15%-75%
 - Quality: low, mid, good, high, best
 - Threshold: 256
 - Transparency: 0.1-2, 0.1/step
 - Category: Face, Spine, Brain,

Heart,Hi speed,Lip&plate,Limbs,
Custom

- Display format:
single,double,triplex,Quad
- Image Reference:A,B,C,D
- Flip: 0° ,90° ,180° ,270°
- View: Front/Back, Back/Front;
Left/Right, Right/Left; Up/Down,
Down/Up
- Rotation Direction: X, Y, Z
- 3D Map: \geq 8types
- Tint maps: \geq 24Types
- Gray maps: \geq 23Types
- 2D VSpeckle: \geq 3types
- 3D VSpeckle: \geq 3types
- Render Type: Gray, GrayInv
- Inverse Available

• **MCUT**

- Slice Number: 2×2 , 3×3 , 4×4 ,
 5×5
- Max Slice Number: 25
- Gray Map: \geq 23types
- Tint Map: \geq 24types
- Cut plane: A,B,C
- Rotation Direction: X, Y, Z
- Volume Angle: 15° -75°
- Interval: 1mm-20mm,
0.5mm/step
- Quality: low,mid,good,high,best

• **Free view(optional)**

- Direction: X, Y, Z
- Route: curve, straight line
- Reference image: A,B,C

- Slice thickness: 0mm-20mm
- Active line: 1,2,3
- Mix: 10-90
- Threshold: 256steps
- Transparency: 0.1-2.0, 0.1/step
- Magic cut
- Erase mode: inside lasso,
outside lasso,big circle, small circle
- Erase type: trace, rectangle,
ellipse
- Rotation direction: X, Y, Z

• **VOCAL**

- Vocal layers: 8, 12,16,20,24,28,32
- Display format: single, Quad
- Image reference: A, B, C

• **STIC**

- View: Front/Back, Back/Front;
Left/Right, Right/Left; Up/Down,
Down/Up;
- Image reference: A, B, C, 3D
- Flip: 0° 90° 180° 270°

• **Niche view**

- Model type: upper, lower
- Display format: single, quad
- Rotation direction: X, Y, Z
- Image reference: A, B, C, N

5.12 PView

- Real time extended field of view
composite imaging
- Ability to back up and realign

the image during acquisition

- Full zoom, cineloop review and image rotation capabilities
- Available on convex, linear phased array, endocavitary probe

5.13 TView

- Expand view of scanning
- Available on all transducers

5.14 Auto

- Intelligent one button automatic optimization in 2D and Doppler modes
- Automatically adjust PRF and baseline in Doppler

5.15 Tissue Doppler Imaging (TD)

- Present wall motion spectrum by using Doppler principle
- Provide wall motion direction and velocity information
- Available on all sector transducer for cardiac imaging
- Selectable frequency, PRF, Focus position, wall filter
- Gain
- Sweep speed: ≥ 10 steps
- Baseline: 5%-95%

- Angle correct: $\pm 80^\circ$
- Sample volume: 0.5mm-10mm, 0.5mm/step
- Spectrum optimize: ≥ 20 steps
- Acoustic power: 5%-100%
- Dynamic range: 108db-128db
- Trace sensitive: ≥ 21 steps
- Gray filter: ≥ 6 steps
- Audio volume: 1-20
- Mode: max, mean, max and mean
- Direction: above, below, above and below
- Heart cycle: 1-5
- Gray map: ≥ 13 types
- Tint map: ≥ 11 types

5.16 Tissue Velocity Imaging (TVI)

- Color codes the velocities in tissue
- Present tissue color imaging by using Doppler principle
- This color image is overlaid onto the 2D image
- Captures low flow but high amplitude signals associated with wall motion
- Available on all sector transducer for cardiac imaging
- Tissue velocity M mode display for wall motion(optional)
- Gain

- Velocity
- Color level: ≥ 11 steps
- Transparency: ≥ 12 steps
- Smooth: ≥ 7 steps
- Line density: ≥ 3 steps
- Persistence: ≥ 7 steps
- Color map: ≥ 10 types

5.17 Tissue Velocity M mode

(TVM)

- Color codes the velocities in tissue
- Present wall motion spectrum based on tissue moving
- This color image is overlaid onto the 2D image
- Captures low flow but high amplitude signals associated with wall motion
- Selectable frequency, PRF, Focus position
- Baseline: 5%-95%
- Color level: ≥ 11 steps
- Transparency: ≥ 13 steps
- Packet size: 3,4,5,6
- Acoustic power: 5%-100%
- Display format: Single, Dual, Quad

6.1 2D mode

- New patient
- BodyPattern
- Archive
- Comments
- End exam
- Sys setting
- Probe&App
- Pview
- Tview
- Fullscreen
- L/R
- U/D
- Center line
- VTissue*
- VSpeckle
- VFusion
- Gray Filter
- Persistence
- Display Format
- Image reference
- Maps
- Frequency
- Focus position
- Focus #
- Dynamic Range
- Line density
- VSharpen
- Biopsy
- Image angle
- Focus width
- Smooth
- Acoustic power

6. Touch Panel Interface

- Contrast imaging
- Elastosonography
- EdgeEnhance
- Vnear
- NeedleEnhance
- SGC

6.2 M Mode

- New patient
- BodyPattern
- Archive
- Comments
- End exam
- Sys setting
- Probe&App
- L/R format
- U/D format
- Maps
- Dynamic range
- Acoustic power
- Sweep speed
- Gray filter
- VSharpen
- ECG

6.3 CF mode

- New patient
- BodyPattern
- Archive
- Comments
- End exam
- Sys setting
- Probe&App
- Invert

- Full Screen
- L/R
- U/D
- Baseline
- Flash Reduction
- Line density
- Persistence
- Display format
- Sync display
- Transparency
- Image reference
- Maps
- Frequency
- PRF
- Wall filter
- Packet size
- Colorlevel
- Sensitivity
- Focus position
- Acoustic power
- Smooth

6.4 PW/CW mode

- New patient
- BodyPattern
- Archive
- Comments
- End exam
- Sys setting
- Probe&App
- Invert
- Triplex
- Display format

- Sweep speed
- Gray filter
- Dynamic range
- Trace sensitive
- Auto trace
- Mode/direction
- Maps
- Frequency
- PRF
- Wall filter
- Baseline
- Steer
- Sample volume
- Volume
- Spectrum optimize
- Acoustic power

6.5 3D mode

- Comments
- BodyPattern
- Back to 2D
- Start3D
- Render
- Display format
- Image reference
- View
- Gray map
- VSpeckle
- Quality
- Threshold
- Transparency
- Volume angle
- Auto rotate (after data

- acquisition)
- Movement step (after data acquisition)
- Slice position(after data acquisition)
- Speed(after data acquisition)
- HQ Vivid Light(after data acquisition)
- Rotation angle (after data acquisition)
- Rotation direction (after data acquisition)
- 3DMcut(after data acquisition)
- Magic Cut (after data acquisition)
- Free View(after data acquisition)
- Smart Touch 3D/4D operation(after data acquisition)

6.6 4D mode

- Comments
- Body Pattern
- Back to 2D
- Start 4D
- Auto Cine
- Movement step
- Rotation direction
- Render
- Display format
- Image reference
- View
- Gray map

- VSpeckle
- Quality
- Threshold
- Transparency
- Volume angle
- Slice position(after data acquisition)
- 3DMcut(after data acquisition)
- Smart touch 3D/4D operation(after data acquisition)

7. System Feature

7.1 Display modes

- Simultaneous capability
 - 2D/PW/CW
 - 2D/CF or PDI
 - 2D/M
 - Dual, 2D/2D
 - Dual, 2D/2D+CF or PDI
 - Dual, duplex triplex
 - Duplex and Triplex mode
 - Quad display in 3D/4D application
 - 25 slice images display in 3D/4D application
- Time line display
 - Independent dual 2D/PW or CW
 - Timed based sweep update mode

7.2 Display annotation

- Institution/hospital name
- Date: 3 types selectable, Year-Month-Day, Day-Month-Year, Month-Day-Year
- Time: 2 types selectable, 24hours and 12 hours
- Operator identification
- Patient name, first, last
- Patient identification: 30 characters
- Gestational age from LMP/EDC/GA/BBT
- VINNO image symbol: Ginkgo leaf
- Power output index
 - MI: mechanical index
 - TIS: thermal index soft tissue
 - TIC: thermal index cranial (Bone)
 - TIB: thermal index bone
- Probe orientation marker: coincide with a probe orientation marking on the probe
- Gray/color bar
- Measurement result window
- Probe type
- Application name
- Image depth
- Imaging parameters by mode
 - 2D/M mode: acoustic power

output, gain, frequency, frame rate, dynamic range

- Color mode: color

acoustic power output, color gain, color flow frequency, PRF, wall filter

- PW/CW mode: Doppler

acoustic power output, Doppler gain, Doppler frequency, PRF, wall filter, sample depth

- Scanline Gain

Compensation(SGC) with 6 slides adjustment

- Focus zone marker

- Body pattern

- PW and CW scale markers: time/speed

- M scale markers: time/depth, time

- System measurement display

- System message display

- Biopsy guide line

- Heart rate

7.3 Simple User Operation

Interface

- Simple user interface and easy workflow, allows one step on probe & application switch, and intuitive user parameter control

7.4 Cineloop

- Acquisition, storage in memory

and display of up to 30000 frames, 1500 seconds long of 2D, color and PW/CW images for review

- Available to decide StartFrame and EndFrame

- Frame by frame manual cine loop review or auto playback with variable speed:

400%, 200% , 100%, 80%, 60%, 50%,40%, 20%

- Frame compare: displays one cine in dual format and allows frame by frame compare side by side

- Acquisition, storage and replay of Doppler audio

7.5 Quick save feature

- The system provides quick save function through USB stick, internal/external HDD, DVD during or after exam
- Configurable saving file format, VRD (VINNO Raw Data), DICOM, PNG,BMP,JPG MP4and AVI

7.6 Physio (Optional)

- One 3-lead ECG input
- Gain, sweep rate and display position controls
- Automatic heart rate calculation and display
- Fault condition display

7.7 Archive

- Patient data input which include patient ID, name, nationality, birth date, sex, exam physician, quality check, exam operator
- Physical data such as weight, height
- Patient exam management
- Patient exam images storage and management
- Import VRD format data into the system from outside media, such as USB stick, external HDD, DVD
- Export patient data into outside Medias
- support backend export without interrupting users scan

7.8 Report

- Automatically pull patient data into the report
- Automatically load measurement worksheet into the report
- Pull related exams' images into the report
- Write comments in the report
- Print report through network or local printer

7.8 VReport (optional)

VReport is a customer-centric tool to design report templates that allows users to:

- design the layout (arrangement of the measured items)
- add new measurement items/ calculations
- auto generates comment list based on the measurement items in the template
- add descriptions : touch to choose, fully utilizing touch screen
- greatly improves the workflow

7.9 Connectivity

- Standard connectivity features
 - Local print to on-board or off-board video printers through USB port
 - Page report print
 - Image export to removable media (DVD, external HDD, USB stick)
- Ethernet Network Connection
 - Cable connection
 - Wireless connection: need wireless routing adaptor
- Network linkage
 - Image export to network storage servers*
 - DICOM export and retrieve *

- Support multiple DICOM server configuration
- Mobile data transfer solution by
 - Blue tooth*(Optional)
 - email*(Optional)
 - Hot point connection
- VCloud * (Optional)
- Integrated DVDRW
 - Support standard DVD media
 - Data storage formats include VRD, DICOM, JPEG,BMP,PNG, AVI
 - JPEG,BMP,PNG,VRD and DICOM images stored in disc can be recalled on the VINNO system
 - PNG and AVI images can be played on normal computers
- On-board patient exam storage
- Direct digital storage of static image or cineloop images to internal hard disk drives
- Fully integrated user interface

7.10 Probes/application

- Selectable multiple applications
- Edit exist application preset
- Edit user defined preset
- Rename preset
- Return to factory preset
- Quick save user defined parameters in related application

7.11 Safety Conformance

- Regulatory Notice: This device is tested to meet all applicable requirements in relevant. According to 93/42 EEC, it is class IIa medical device.
- Conformity to Standards:
 - IEC 60601-1 : 2012 Medical electrical equipment - Part 1: General requirements for basic safety and essential performance
 - IEC 60601-1-2:2007 Electromagnetic compatibility - Requirements and tests
 - IEC 60601-1-6:2010 Usability
 - IEC 60601-2-37:2007 Medical electrical equipment - Particular requirements for the safety of ultrasonic medical diagnostic and monitoring equipment
 - IEC 61157:2007 Declaration of acoustic output parameters
 - ISO 10993-1:2009 Biological evaluation of medical devices
 - IEC 62304:2006 Medical device software – Software life cycle processes
 - IEC 62366:2007 Medical devices - Application of usability engineering to medical devices
 - Council Directive 93/42/EEC on Medical Device
 - WEEE according to 2012/19/EU
 - RoHS according to 2011/65/EU

8. Measurement and Analysis

8.1 Measurement in different modes

8.1.1 Generic Measurement in 2D mode

- Depth
- Distance
- Perimeter
 - Length and width method
 - Ellipse method
 - Polygon method
 - Spline method
 - Tracing method
- Area
 - Length and width method
 - Ellipse method
 - Polygon method
 - Spline method
 - Tracing method
- Volume
 - Single line method
 - Dual line method
 - Triple line method
 - Single ellipse method
 - Single ellipse and single line method
- Angle
- Stenosis

- Diameter method
- Square meter method
- A and B ratio
 - Diameter ratio
 - Square meter ratio

8.1.2 Generic Measurement in CFM mode

- CFV
 - point
 - profile

8.1.3 Generic Measurement in M mode

- Depth
- Distance
- Time
- Speed
- Heart rate
- Stenosis
- A and B ratio
 - Diameter ratio
 - Time ratio
 - Speed ratio

8.1.4 Measurement in PW mode

- Speed (include PV (Peak Velocity))
- Time (include AT (Accelerate Time))
- Acceleration
- PS (Peak Speed in systole period)

- ED (The speed in the end of diastole period)
- MD (Minimum speed in diastole period)
- TAMAX (maximum speed in time average)
- TAMEAN (mean speed in time average)
- TAMIN (minmum speed in time average)
- PI (Pulsatility Index)
- RI (Resistance Index)
- PS and ED ratio
- ED and PS ratio
- A and B ratio (A/B ratio)
 - Speed ratio
 - Time ratio
 - Acceleration ratio
- FLOWVOL (Flow Volume)
- MaxPG (maximum pressure gradient)
- MeanPG (Mean pressure gradient)
- SV (Stroke Volume)
 - Each volume diameter cardiac
 - Time mean speed in each stroke volume
 - Cardiac output
- Heart rate
- SV(LVOT)/SV(RVOT)

8.2 Measurement in different applications

8.2.1 Abdominal Measurement

- General abdomen
- Difficult abdomen
- Kidney
- Renal vessel
- Abdominal trauma

8.2.2 Small Part Measurement

- Thyroid
- Breast
- Testis
- Musculoskeletal
- Upper and lower extremity joint
- Nerve block

8.2.3 Vessel Measurement

- Carotid artery
- Upper artery
- Upper vein
- Lower artery
- Lower vein
- Vessel puncture
- Transcranial Doppler

8.2.4 Gynecology Measurement

- Uterus and Plevis
- Follicle

8.2.5 Urology Measurement

- Bladder
- Prostate
- Renal
- Kidney and ureter
- Pelvic Floor dysfunction

8.2.6 Pediatric Measurement

- Neonatal Head
- Neonatal Abdomen
- Pediatric Abdomen
- Pediatric Hip
- FAST

8.2.7 Obstetrics Measurement

- OB Early
- OB Mid
- OB Late
- Fetal Heart

8.2.8 Cardiac Measurement

- General
- LV
- MV
- Ao
- AV
- LA
- RV
- TV
- PV
- RA
- System

8.2.9 Auto NT (Nuchal Translucency) measurement

- Automatically detect Nuchal Translucency in interest box
- Automatically report thickness result of NT

8.2.10 Auto IMT (Intima-Media Thickness) measurement

- Automatically detect intima media thickness in interest box
- Automatically report the result of IMT
- Available in linear probe

8.2.11 Live IMT (Intima-Media Thickness) measurement

- Real-time automatically display IMT items with the different ROI positions
- The IMT items include: max, min, average, SD, points (how many points are used for the result), size of ROI .
- Available in carotid application

8.2.12 Auto IT (Intracranial translucency) measurement

- Support Auto IT(Intracranial translucency) measurement
- Draw the ROI and the system analyses and displays the result

8.2.13 Auto Follicle(2D/3D)(Optional)

*

- Just click on the area of follicle in B mode, the area of this follicle will be reported automatically
- Report the area of different follicle in the volume data automatically

8.2.14 Smart 3D Volume

Measurement(Optional) *

- Trace the margin of the irregular circle in different slices of volume data in irregular shape
- Automatically report the volume of the irregular object

8.2.15 VAim OB measurement

- VAim OB is an intelligent tool for fetal growth calculation, just one touch to activate the measurement items (BPD, OFD, HC, AC, FL, HL) and get the results, helps to make clinical decisions quickly and confidently, improving the speed and ease of exams
- The intelligent results will be add into the worksheet and report automatically

8.2.16 VAim Hip measurement

VAim Hip is an intelligent solution in the assessment of DDH(Developmental

Dysplasia of Hip) with one simple touch.

- Based on ‘Ped HIP’ application

8.2.17 VAim Follicle (2D)

measurement (Optional) *

An intelligent tool for follicle calculation, one touch to get the follicle status, dedicated for women’s reproductive health.

- Choose left or right follicle
- Automatically identity all the follicles with different colors and calculate follicle volume and diameter

8.2.18 VAid (Vinno Artificial

Intelligent Diagnosis)(Optional) *

VAid is an AI powered, innovative tool for breast lesion detection in real-time or on stored images (static & cine)

- For static image: user need to select the measurement mode (measure、BI-RADS + measurement (Lite)、BI-RADS + measurement (Professional)
- For cine(real time scan or stored cine):

The number and the degree of nodes can be automatically displayed in real time, green box means suspect Benign, orange box means suspect Malignant.



VINNO Technology (Suzhou) Co., Ltd

VINNO is focusing on producing premium diagnostic ultrasound development to provide customer clinical value through Continuous Innovation, Excellent Performance and Accessible Solutions.



Thanks you for your interest in VINNO.

You can contact us by phone and email (below) or contact our local representatives.

📍 5F, A Building, NO.27 Xinfu Rd, Suzhou Industrial Park, 215123, China(215.6123)

☎ Tel: +86 512 62873806

📠 Fax: +86 512 62873801

✉ email address: vinno@vinno.com

🌐 website: www.vinno.com