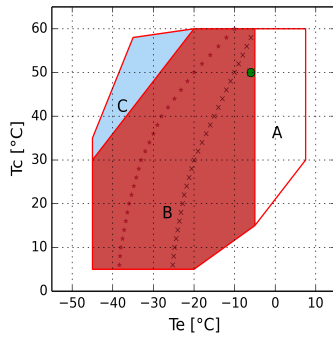




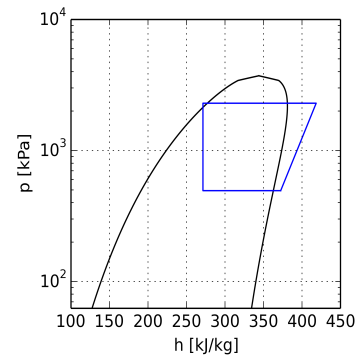
Calculation - AUT

Input

Model	AUT4-H2001CC
Refrigerant	R404A
Evaporating temperature	-6.0 °C
Ambient temperature	40.0 °C
Reference temperature	Dew temperature
Superheat	10.0 K
Evap. outlet superheat	7.0 K
Voltage / phases / frequency	380-420 V / 3 / 50 Hz



A = "CC" models only
 B = Standard application
 C = Head cooling fan or max superheating 20K
 x = Min Te 50%
 * = Min Te 50% Head cooling fan or max superheating 20K
 • = Dew temperature



Performance calculation

	Standard conditions	At evaporator	At compressor
Cooling capacity	31790 W	30590 W	31500 W
Absorbed power including fans	16.57 kW	16.57 kW	16.57 kW
Condenser capacity	48.34 kW	46.25 kW	48.05 kW
COP	1.92	1.85	1.90
Mass flow	1046.5 kg/h	1133.5 kg/h	1133.5 kg/h
Condensing temperature	50.0 °C	50.0 °C	50.0 °C
Liquid subcooling	0.0 K	3.0 K	3.0 K
Absorbed current	26.6 A	26.6 A	26.6 A
Max operating current	38.0 A	38.0 A	38.0 A
Locked rotor current	177.0 A	177.0 A	177.0 A

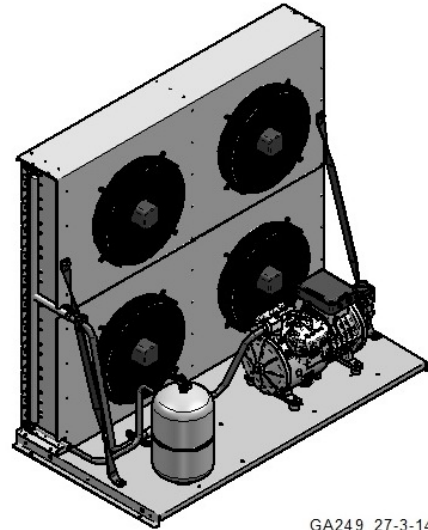
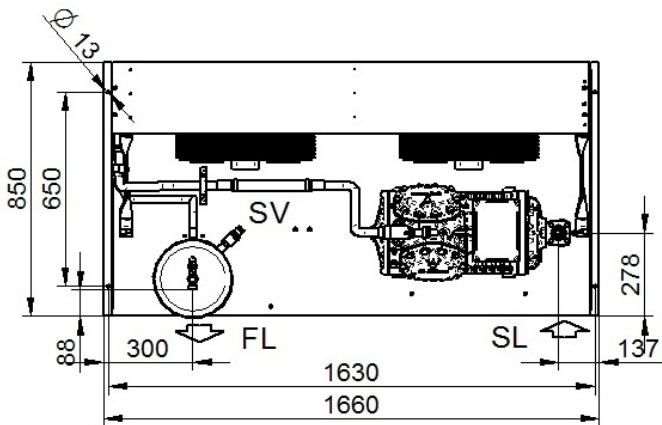
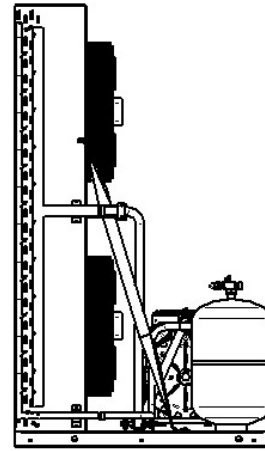
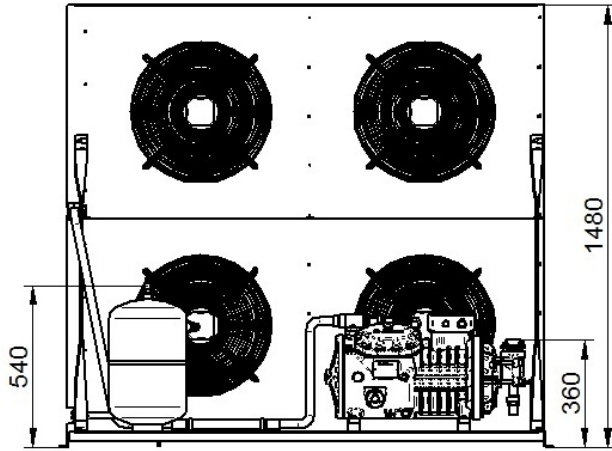


Technical data

Compressor model	H2001CC	
Displacement @ 50 Hz	56.87	[m ³ /h]
Displacement @ 60 Hz	68.25	[m ³ /h]
Motorfans: Air Flow (tot.) @50Hz	21000.0	[m ³ /h]
Motorfans: Air Flow (tot.) @60Hz	23630.0	[m ³ /h]
Motorfans: Power @50Hz	4×450	n° × [W]
Motorfans: Power @60Hz	4×650	n° × [W]
Motorfans: Current consumption (tot.) @50Hz	8.4	[A]
Motorfans: Current consumption (tot.) @60Hz	11.84	[A]
Motorfans: Condenser capacity @50Hz	4×8	n° × μF
Motorfans: Condenser capacity @60Hz	4×10	n° × μF
Motorfans	4×450	n° × Ø
Receiver volume	19.0	[L]
Connections: Suction	42 s.	[mm]
Connections: Liquid	7/8"	
Net weight	311.0	[kg]
Sound pressure (free field) 1,8 m @50Hz	66.6	[dBA]
Sound pressure (free field) 1,8 m @60Hz	67.8	[dBA]
Sound pressure (free field) 5 m @50Hz	57.7	[dBA]
Sound pressure (free field) 5 m @60Hz	58.9	[dBA]
Sound power @50Hz	82.7	[dBA]
Sound power @60Hz	83.9	[dBA]
	0.0	



Overall dimensions [mm]



GA249 27-3-14

FL - Refrigerant outlet

SV - Safety valve

SL - Suction service valve

Configuration: Standard \ Optional (Air-cooled condensing units)

L.P. and H.P. dual pressure switch	Optional
High pressure switch	Optional
Filter driers	Optional
Moisture-liquid indicator	Optional
Solenoid valve	Optional
Suction flexible hose	Optional
Oil separator	Optional
Fan speed regulator	Optional
Weather protection housing	Optional



Configuration: Standard \ Optional (Semi-hermetic compressors)

TE=Thermistor protection	Standard
REL=Motor protection electronic module	Standard
CH=Crankcase heater	Optional
US=Unloaded start by-pass	Optional
ALL=Oil level warning device	Optional
IP65=Electrical box IP65	Standard
CR1=Capacity control 50-100%	Optional
For operation with HFC refrigerants the compressor must be ordered with POE OIL. For operation with HCFC refrigerant the compressor shall be ordered with mineral oil.	
Motors suitable for operation at different voltage from those listed above may be supplied on request.	
220-240/3/50 (Δ) 380-420/3/50 (Y)	Optional
265-290/3/60 (Δ) 440-480/3/60 (Y)	Optional
380-420/3/50 (PWS) 440-480/3/60 (PWS)	Standard
208-230/3/60 (Δ) 360-400/3/60 (Y)	Optional
208-230/3/60 (PWS)	Optional
220-240/3/50 (PWS)	Optional
360-400/3/60 (PWS)	Optional
475-525/3/50 (PWS) 570-630/3/60 (PWS)	Optional