



Settings for the
new ACUSON
SC2000 PRIME
ultrasound system,
Release 5.1

2D ICE Imaging: Visualize what's needed in electrophysiology

ACUSON AcuNav 8F / 10F and SOUNDSTAR ultrasound catheters

New software improvements and settings on the ACUSON SC2000 PRIME ultrasound system, release 5.1 provides more options for your 2D ICE imaging. As a physician, you have a specific look that you prefer. You can customize your preferences with the ACUSON SC2000 PRIME.

Shown below are the ACUSON SC2000 PRIME 2D ICE imaging software and settings which were designed to enhance structure continuity and improve speckle pattern.



Septal puncture with the current 2D ICE imaging factory presets.



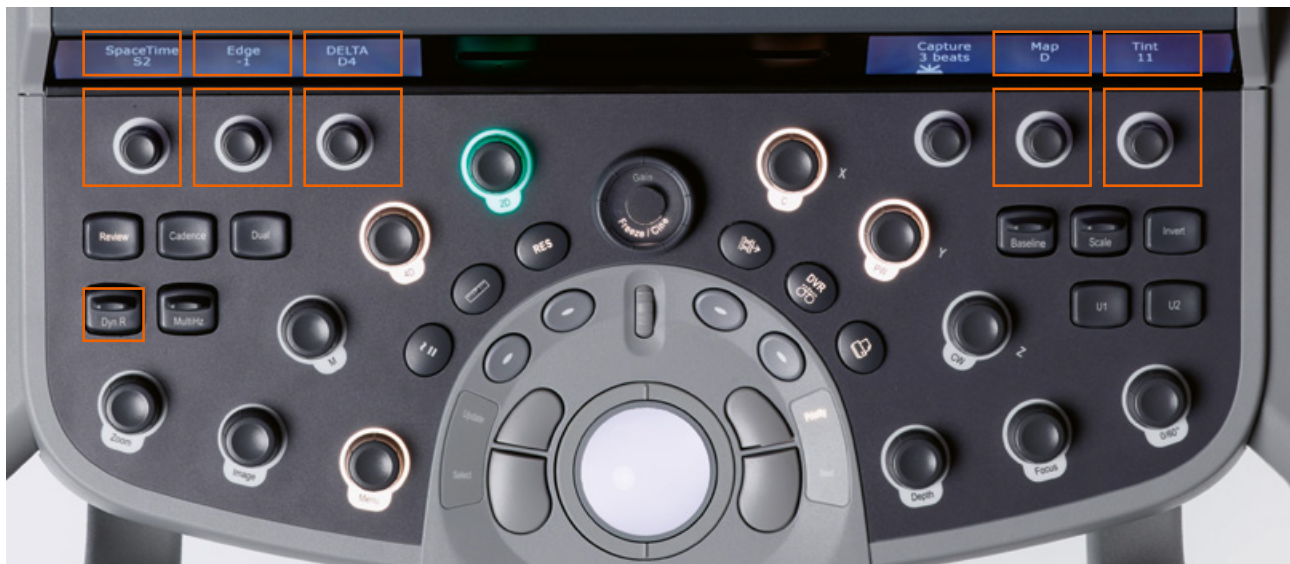
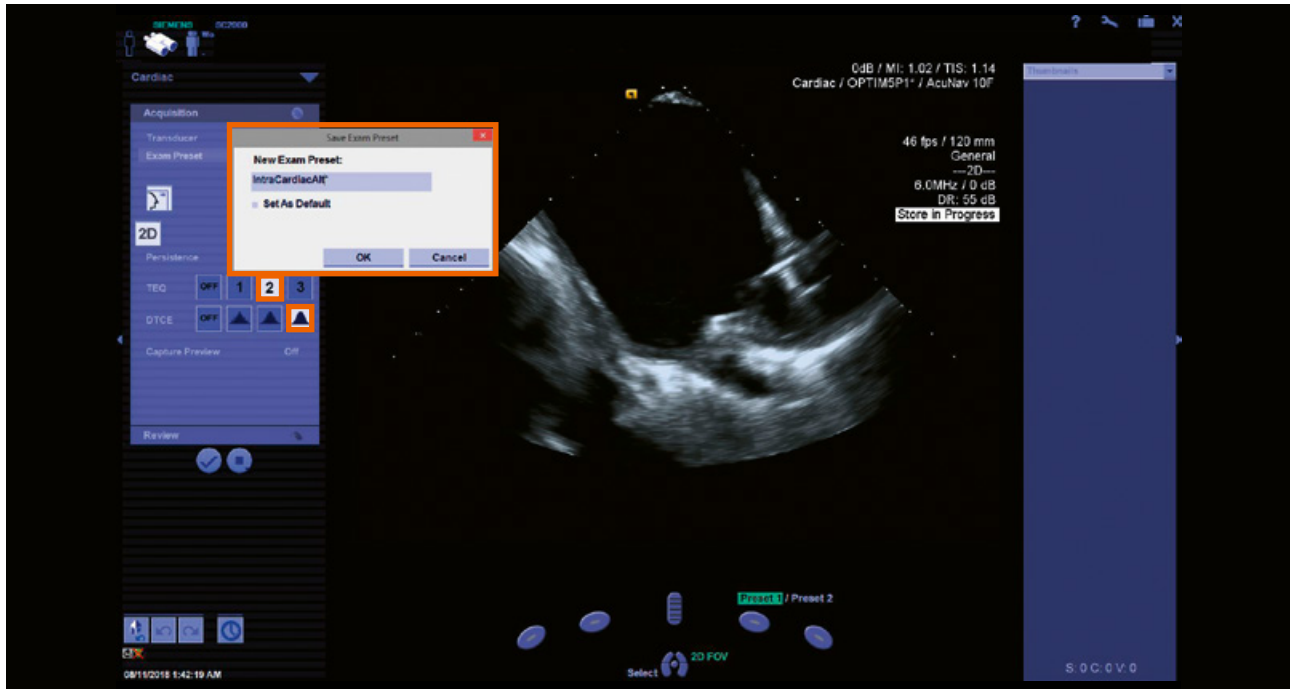
Septal puncture with the new 2D ICE imaging from the ACUSON SC2000 5.1 software and parameters.

By following the steps below, you can create a preset on the ACUSON SC2000 PRIME to easily change to the new 2D ICE imaging option settings:

1. Plug in the 2D ICE SwiftLink catheter connector to your ACUSON SC2000 PRIME.
2. Connect the 2D ICE catheter (ACUSON AcuNav™ 8F or 10F or SOUNDSTAR® ultrasound catheter).
3. Freeze the image.
4. Adjust the image parameters to reflect the settings on the following page.
5. Click on exam preset, and select "New Exam Preset."
6. Type in the name for the new 5.1 2D ICE preset.
7. Click OK.

Settings for the new 5.1 2D ICE Imaging Option

TEQ	DTCE on Release 5.1	DR	SpaceTime	Edge	Delta	Map	Tint
2	High	55 dB	S2	-1	D4	D	11



* Software changes to DTCE High are specific to the ACUSON SC2000 5.1 release.

Siemens Healthineers Headquarters

Siemens Healthcare GmbH
Henkestr. 127
91052 Erlangen, Germany
Phone: +49 913184-0
siemens-healthineers.com

Legal Manufacturer

Siemens Medical Solutions USA Inc.,
Ultrasound
685 E Middlefield Rd, Mountain View
CA 94043, USA
Siemens-healthineers.com/sc2000

ACUSON SC2000 and AcuNav are trademarks
of Siemens Medical Solutions USA, Inc.

SOUNDSTAR® is a registered trademark of
Biosense Webster, Inc. part of the Johnson &
Johnson Family of Companies.