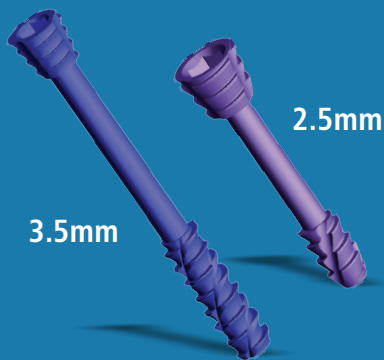


FOOT AND ANKLE
SURGERY

SHARMATM

HEADLESS
COMPRESSION
SCREWS

Implants & Instrumentation



COMPLETE HEX
SCREWDRIVER,
CANNULATED SCREW
& GUIDEWIRE SYSTEM



SELF-DRILLING
SELF-TAPPING



Sharma
Orthopedic (India)
Pvt. Ltd.

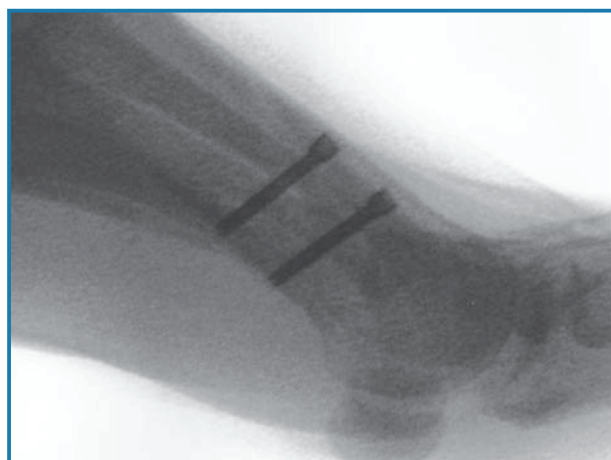


HEADLESS COMPRESSION SCREWS

Implants & Instrumentation



Screws offer configurations to help surgeons address a variety of bone repair procedures. Both sizes are Cannulated, Self-Tapping and Self-Drilling.

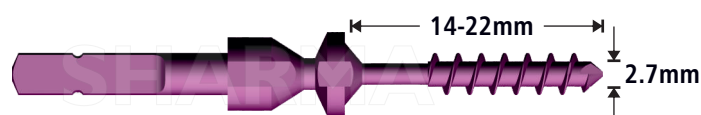


OTHER FIXATION AVAILABLE

2.0mm Twist-Off Screw



2.7mm Twist-Off Screw



IMPLANT / DIMENSIONS

Material : Titanium

2.5mm Headless Compression Screw

- Cannulated for 0.9mm Guidewire
- Uses 1.8mm Hex Driver
- Self-Drilling
- Self-Tapping



LENGTH	CAT. NO. S.S.	CAT. NO. TIT.
12MM	SP05.SS11921	SP05.TIT11921
14MM	SP05.SS11922	SP05.TIT11922
16MM	SP05.SS11923	SP05.TIT11923
18MM	SP05.SS11924	SP05.TIT11924
20MM	SP05.SS11925	SP05.TIT11925
22MM	SP05.SS11926	SP05.TIT11926
24MM	SP05.SS11927	SP05.TIT11927
26MM	SP05.SS11928	SP05.TIT11928
28MM	SP05.SS11929	SP05.TIT11929
30MM	SP05.SS11930	SP05.TIT11930

3.0mm Headless Compression Screw

- Cannulated for 1.0mm Guidewire
- Uses 2.0mm Hex Driver
- Self-Drilling
- Self-Tapping

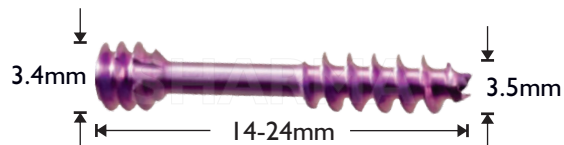
LENGTH	CAT. NO. S.S.	CAT. NO. TIT.
14MM	SP05.SS11782	SP05.TIT11782
16MM	SP05.SS11783	SP05.TIT11783
18MM	SP05.SS11784	SP05.TIT11784
20MM	SP05.SS11785	SP05.TIT11785
22MM	SP05.SS11786	SP05.TIT11786
24MM	SP05.SS11787	SP05.TIT11787
26MM	SP05.SS11788	SP05.TIT11788
28MM	SP05.SS11789	SP05.TIT11789
30MM	SP05.SS11790	SP05.TIT11790
32MM	SP05.SS11791	SP05.TIT11791
34MM	SP05.SS11792	SP05.TIT11792
36MM	SP05.SS11793	SP05.TIT11793
38MM	SP05.SS11794	SP05.TIT11794
40MM	SP05.SS11795	SP05.TIT11795

HEADLESS COMPRESSION SCREWS

Implants & Instrumentation

3.5mm Headless Compression Screw

- Cannulated for 1.0mm Guidewire
- Uses 2.0mm Hex Driver
- Self-Drilling
- Self-Tapping



LENGTH	CAT. NO. S.S.	CAT. NO. TIT.
16MM	SP05.SS11940	SP05.TIT11940
18MM	SP05.SS11941	SP05.TIT11941
20MM	SP05.SS11942	SP05.TIT11942
22MM	SP05.SS11943	SP05.TIT11943
24MM	SP05.SS11944	SP05.TIT11944
26MM	SP05.SS11945	SP05.TIT11945
28MM	SP05.SS11946	SP05.TIT11946
30MM	SP05.SS11947	SP05.TIT11947
32MM	SP05.SS11948	SP05.TIT11948
34MM	SP05.SS11949	SP05.TIT11949
36MM	SP05.SS11950	SP05.TIT11950
38MM	SP05.SS11951	SP05.TIT11951
40MM	SP05.SS11952	SP05.TIT11952
42MM	SP05.SS11953	SP05.TIT11953
44MM	SP05.SS11954	SP05.TIT11954
46MM	SP05.SS11955	SP05.TIT11955
48MM	SP05.SS11956	SP05.TIT11956
50MM	SP05.SS11957	SP05.TIT11957
52MM	SP05.SS11958	SP05.TIT11958
54MM	SP05.SS11959	SP05.TIT11959
56MM	SP05.SS11960	SP05.TIT11960
58MM	SP05.SS11961	SP05.TIT11961
60MM	SP05.SS11962	SP05.TIT11962

HEADLESS COMPRESSION SCREWS

Implants & Instrumentation



SCREW DRIVER HANDLE
S016.INS.2864



CANNULATED DRILL BIT Ø 2 X 100MM
S016.INS.2865



CANNULATED DRILL BIT Ø 2.8 X 150MM
S016.INS.2866



CANNULATED DRILL BIT Ø 3 X 100MM
S016.INS.2867



CANNULATED DRILL BIT Ø 4 X 100MM
S016.INS.2868



CANNULATED DRILL BIT Ø 5.8 X 100MM
S016.INS.2869



THREADED GUIDE WIRE Ø 1 X 120MM
S016.INS.2870



GUIDE WIRE Ø 0.7 X 120MM
S016.INS.2871



GUIDE WIRE Ø 1 X 120MM
S016.INS.2872



GUIDE WIRE Ø 1.5 X 120MM
S016.INS.2873



REDUCTION FORCEPS
S016.INS.2874

HEADLESS COMPRESSION SCREWS

Implants & Instrumentation



DEPTH GUIDE 1
S016.INS.2875



DEPTH GUIDE 2
S016.INS.2876



SCREW FORCEPS
S016.INS.2878



CLEANING GUIDE WIRE Ø 1 X 160 MM
S016.INS.2877



**CANNULAED SCREW DRIVER
(FOR 2.5MM SCREW)**
S016.INS.2878



SCREW DRIVER (FOR 2.5MM SCREW)
S016.INS.2879



**CANNULAED SCREW DRIVER
(FOR 3.5MM SCREW)**
S016.INS.2880



SCREW DRIVER (FOR 3.5MM SCREW)
S016.INS.2881



**CANNULAED SCREW DRIVER
(FOR 4.0MM SCREW)**
S016.INS.2882



SCREW DRIVER (FOR 4.0MM SCREW)
S016.INS.2883



**CANNULAED SCREW DRIVER
(FOR 5.0MM SCREW)**
S016.INS.2884

HEADLESS COMPRESSION SCREWS

Implants & Instrumentation



SCREW DRIVER (FOR 5.0MM SCREW)
S016.INS.2885



**CANNULAED SCREW DRIVER
(FOR 6.5MM SCREW)**
S016.INS.2886



SCREW DRIVER (FOR 6.5MM SCREW)
S016.INS.2887



**DRILL AND WIRE GUIDE (FOR 2.5MM
SCREW)**
S016.INS.2888



**DRILL AND WIRE GUIDE (FOR 3.5MM
SCREW)**
S016.INS.2889



**DRILL AND WIRE GUIDE (FOR 4.0MM
SCREW)**
S016.INS.2890



**DRILL AND WIRE GUIDE (FOR 5.0MM
SCREW)**
S016.INS.2891



**DRILL AND WIRE GUIDE (FOR 6.5MM
SCREW)**
S016.INS.2892



CONTAINER



We feel proud to introduce ourselves as a foremost manufacturer and exporter in orthopedic implants and instruments. We offer a wide & growing range of the highest quality orthopedic implants & instrumentation along with other associated products at reasonable cost.

We have got a sound and firm position in the orthopedic industry by having a sturdy network of distributors domestically & around the globe. We are having the most modern technologies and are one of the leading manufacturers

(since 1992) with pinnacle superiority of Ortho-Implants and instrumentations. We offer a wide range of **Orthopedic Products** made up of **Stainless Steel 316L, Stainless Steel 316LVM and Titanium**. We have employed Quality management System which confirms to ISO 9001 & ISO 13485 standards.

Our all products are CE marked as per European Council Directive. 93/42/EEC and are licensed by Indian FDA for manufacturing. Based on the principles of Quality Excellency, our product satisfies the expectations of our

customers. We are associated with major Medical Institutions of India for supplying the products. We continually participate in almost all major exhibitions of Orthopedics around the world to promote our products.

Our motto is to provide the best quality products and to continue as a leading manufacturer and supplier of these products in the global market. We are growing rapidly in terms of world-wide sales because of our extensive product range, its quality & services by orthopedic surgeons.



TM

Sharma Orthopedic (India) Pvt. Ltd.

445/A, G.I.D.C. Estate, Waghodia - 391 760, Dist. Vadodara, Gujarat, India.
Tele No. : +91 2668 262601 / 02 / 03 / 7698221526 / 7284003123 / 7284003125
Toll Free : 1800 123 4979 **Email :** info@sharmaortho.com, exports@sharmaortho.com
Website : www.sharmaortho.com **CIN :** U33110GJ2014PTC081007

