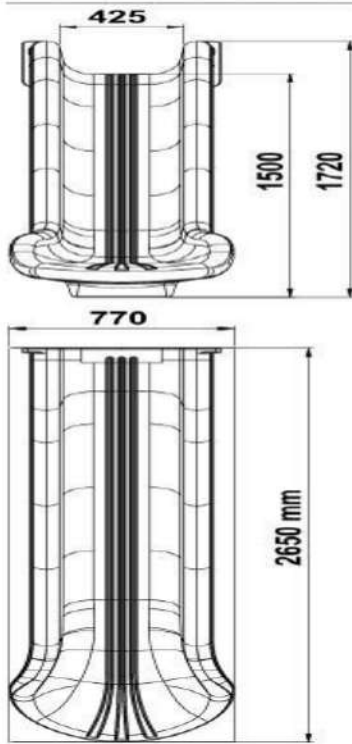
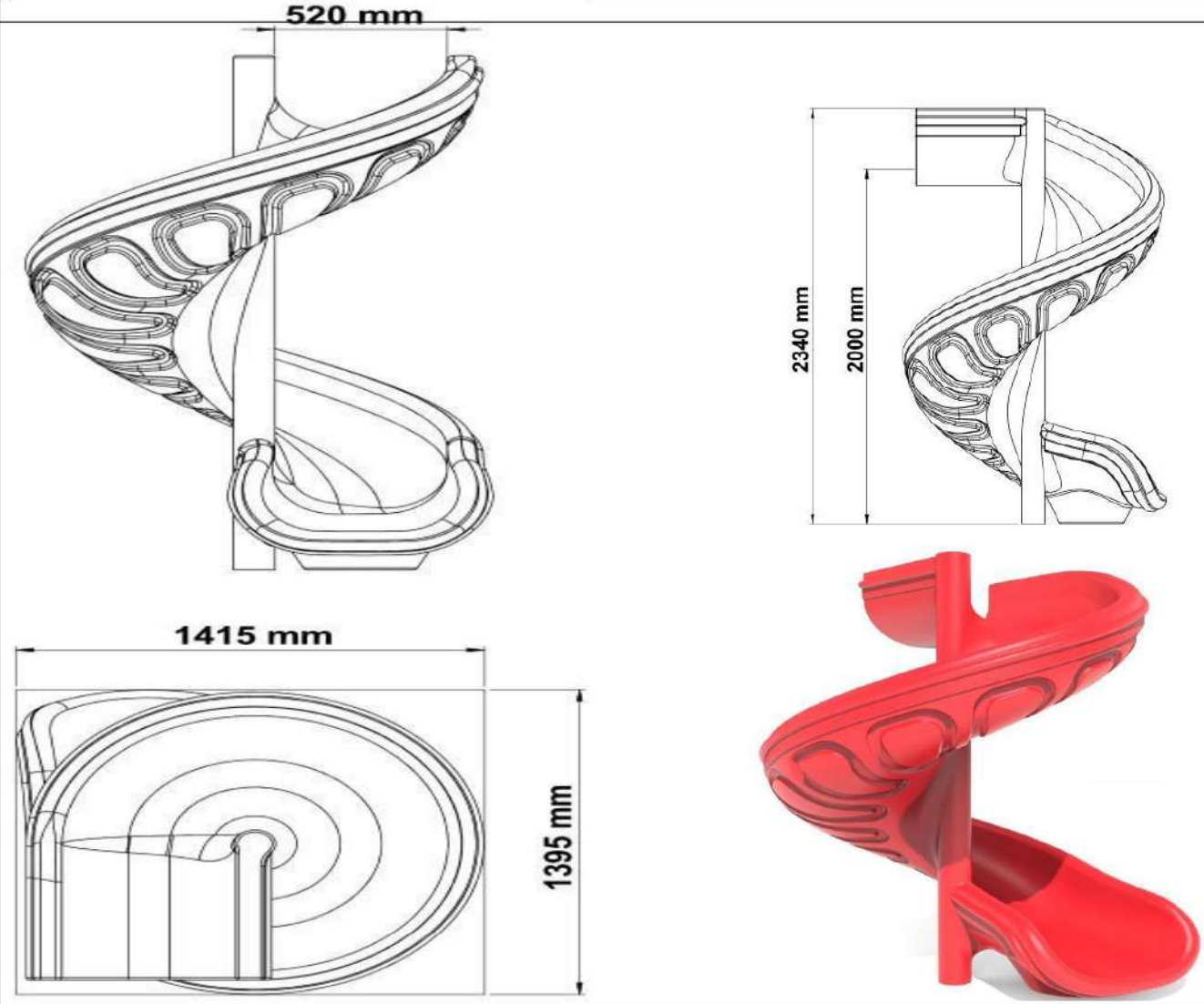


## H:150 DÜZ KAYDIRAK



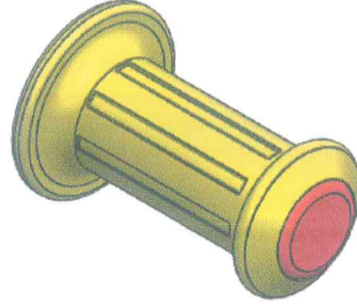
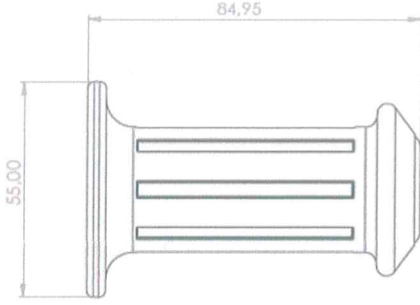
- ❖ HEIGHT 150 cm. on FLAT slides connected to the platform at its height; The angle of inclination of the sliding section with the bed will be double-walled and manufactured in one piece so that the angle of inclination of the slide is no more than 40° when measured relative to the height axis of the slide.
- ❖ The height of the two Flat Slides, the side parts of the entrance section, will be at least 22 cm. The width of the sliding section of the Flat Slide will be at least 42 cm.
- ❖ The radius of the exit point of each slide must be at least 50 mm. The output width should be at least 75 cm.
- ❖ The exit section of this slide will be concreted by embedding it in the ground with an anchor.
- ❖ These Slides will be manufactured with rotation technology from powdered self-colored LLDPE raw materials. The dyes used in coloring will be suitable for children's health and food regulations.
- ❖ EN TS EN 1176-3 / 04.02.2010 Within the scope of the document, the expression 'FLAT SLIDE' is mandatory.
- ❖ Weight min.35 KG.

## H:200 SİRAL KAYDIRAK



- ❖ The SPIRAL slides connected to the platform with a height of about 200 cm will be manufactured as double-walled and single-piece, and the output part will be designed to be 90 ° to the left side of the input part.
- ❖ The height (depth) of the side sections of the entrance section of the vertical Slide will be at least 25 cm. The width of the sliding part of the slide will be at least 50 cm.
- ❖ All spiral slides will have an exit section (deceleration plane) that will reduce the sliding speed, and the length of the sliding section will be at least 55 cm, the length of the exit section will be at most 10 °, the exit radius will be 50 mm.
- ❖ The exit section of this slide will be concreted by embedding it in the ground with an anchor.
- ❖ In addition, there will be a slot in the central part of the spiral slides that will allow you to install an Ø89 pipe in the spiral section.
- ❖ These Slides will be manufactured with rotation technology from powdered self-colored LLDPE rawmaterials.
- ❖ The dyes used in coloring will be suitable for children's health and food regulations.
- ❖ TS EN 1176-3/04.02.2010 Within the scope of the document, the expression /SPIRAL SLIDE/ is mandatory.
- ❖ Weight min. 52 KG.

## ELCEK



- ❖ The material will be produced by injection molding technique from polyethylene material.
- ❖ However, the hands will not come out by themselves and will be produced in color with enough firmness that they cannot be removed by the user.
- ❖ It is designed so that the handle holders do not damage the hands and are suitable for providing a comfortable grip.

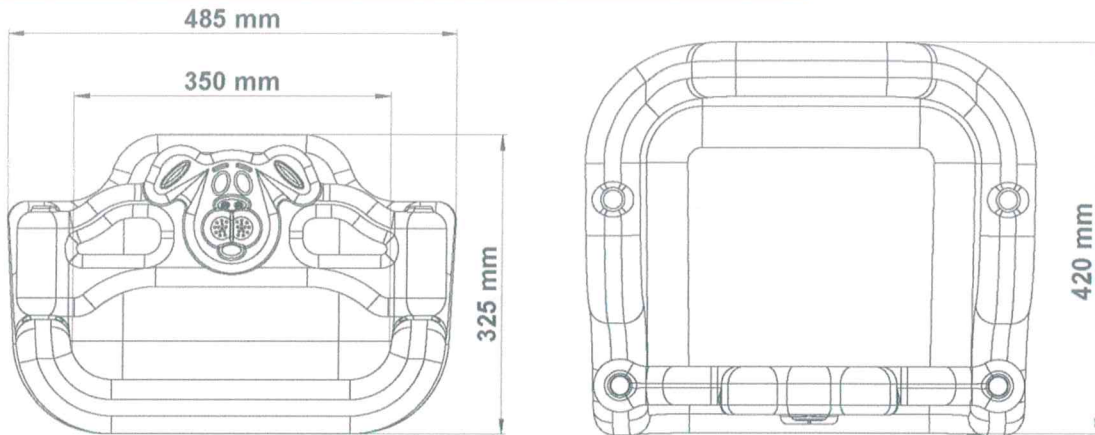
**PRODUCT CODE : YP 169**

**MUSTAFA DURNA**

**İNŞAAT ANONİM ŞİRKETİ**

Büyük Kayacık Mh. 3. Ord. Sarı. Bölge. 19. Sk. No: 4  
Tel: 0332 502 10 79 Selçuklu/KONYA  
bilgi@mdgroup.com.tr • www.isiltiplastik.com  
Selçuk V.D. 624 056 1663 Ticaret Sicil No: 46702  
Mersis No: 0624056166300001

### SWING SEAT WITH CHAIN



- ❖ A. The swing seat should be closed on 3 sides and have a front protection belt for safety.
- ❖ The chains shall be 6 mm caliber dip galvanized. The swing seat and chains will comply with TSE safety norms.
- ❖ The swing seat and railing of the chair will be produced with double walls made of self-colored polyethylene material.
- ❖ The rear seats must be single and there must be a protection belt with an animal figure.
- ❖ The swing seat must be manufactured in such a way that its width and length are 48.5x42 cm and its height is at least 32.5 cm.
- ❖ The width of the living area is min. it should be 35 cm.
- ❖ Shock-absorbing rubber should be provided in the front part of the swing seat for safety against impact.
- ❖ The bracket must weigh a minimum of 3.5 kg along with the swing railing.



- ❖ According to TS EN 1176-2 / 04.02.2010 It is mandatory to have the expression "POLYETHYLENE" within the scope of the Document.
- ❖ The dyestuffs used in coloring will be in accordance with the children's health and food regulations.

**PRODUCT CODE : YP 180**

**MUSTAFA DURNA**

**İNŞAAT ANONİM ŞİRKETİ**

Büyük Kayaık Mh. 3.Org. San. Böl. 19.Sk. No: 4  
Tel: 0332 502 10 79 Selçuklu/KONYA  
bilgi@mdgroup.com.tr • www.isiltiplastik.com  
Selçuk V.D. 624 056 1663 Ticaret Sicil No: 46702  
Mersis No: 0624056166300001