

# SERIE 1

small is beautiful



**Soluscope**

# SERIE 1

## Safety for all



### *All-in-one system*

#### MONITORING AT EACH LEVEL

The *Serie 1* provides the right amount of single-use chemistry at each reprocessing cycle. It preserves the endoscope and offers consistent process for user and patient security. The *Serie 1* integrates an automatic leak test to maintain the endoscope integrity during the cycle.

A secured sensor ensures that the lid is correctly closed when the device is running.

#### SECURE PROCESS

The microbiological quality of the water is guaranteed by the 0.2 µm terminal filter and an optional three-stage pre-filtration unit.

The *Serie 1* features an automated self-disinfection cycle to avoid any risk of contamination.

CE MARK / ISO 15883 - 1&4 compliant



# Simplicity

and ergonomics



## *Best technology in a compact device*

### A WELL-THOUGHT OUT DESIGN

The *Serie 1* only needs one power and water in/out connection to be installed. Mobile and compact, it meets all space and accessibility environments.

The chemical products and the terminal filter are accessible from the front panel of the device for a quick and secured replacement.

### AN INTUITIVE AND FULLY AUTOMATED PROCESS

The *Serie 1* touch screen provides an innovative and intuitive graphic interface. Just click on the screen to launch safe cycles and follow-up in real time each step of the process.

An optional printer delivers a traceability ticket for each cycle.

# automatic endoscope reprocessor

validated

# Efficacy



## Chemistry

### COMPLETE OFFER

The *Serie 1* is available with a complete range of chemical products, including Peracetic Acid (PA), Glutaraldehyde (GTA) and Ortho-Phthalaldehyde (OPA) disinfectants. The complete system *Serie 1*/Soluscope chemicals is ISO15883-1&4 certified and guarantees a safe process in less than 22 minutes (for PA, cycle 1).

### EFFECTIVE AND DEDICATED SINGLE-USE CHEMISTRY

All *Serie 1* detergents and disinfectants are cross-compatible and can be used with each other. Short contact time and low concentration combined with appropriate temperature make *Serie 1* chemicals compliant with all endoscopes on the market.

#### DETERGENTS

##### **SOLUSCOPE EZ**

High performance detergent with tri-enzyme complex. Demonstrated efficacy on biofilm. Non foaming formula.

##### **SOLUSCOPE NW**

High performance pH-neutral detergent to prevent the formation of biofilm. Non foaming formula.

#### DISINFECTANTS

##### **SOLUSCOPE PA**

Peracetic Acid-based disinfectant. Broad spectrum antimicrobial activity demonstrated from 6 min.

##### **SOLUSCOPE GTA**

Glutaraldehyde-based disinfectant. Broad spectrum antimicrobial activity demonstrated from 10 min.

##### **SOLUSCOPE OPA**

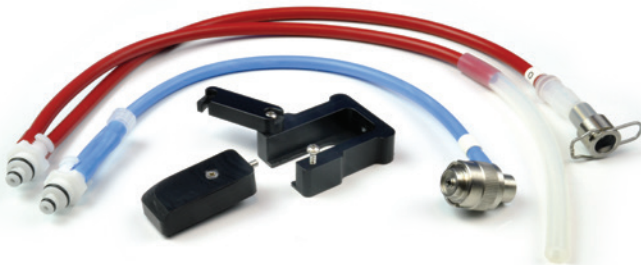
Ortho-Phthalaldehyde-based disinfectant. Broad spectrum antimicrobial activity demonstrated from 10 min.





# Connectors

*Soluscope connectics* is a unique offer of compatible connectors which refers to more than 20 years of collecting data on endoscopes. *Soluscope* connectors ensure an effective, safe and proven link between the *Serie 1* and your endoscopes.



*A complete solution to optimize your organization*

## TRANSPORT

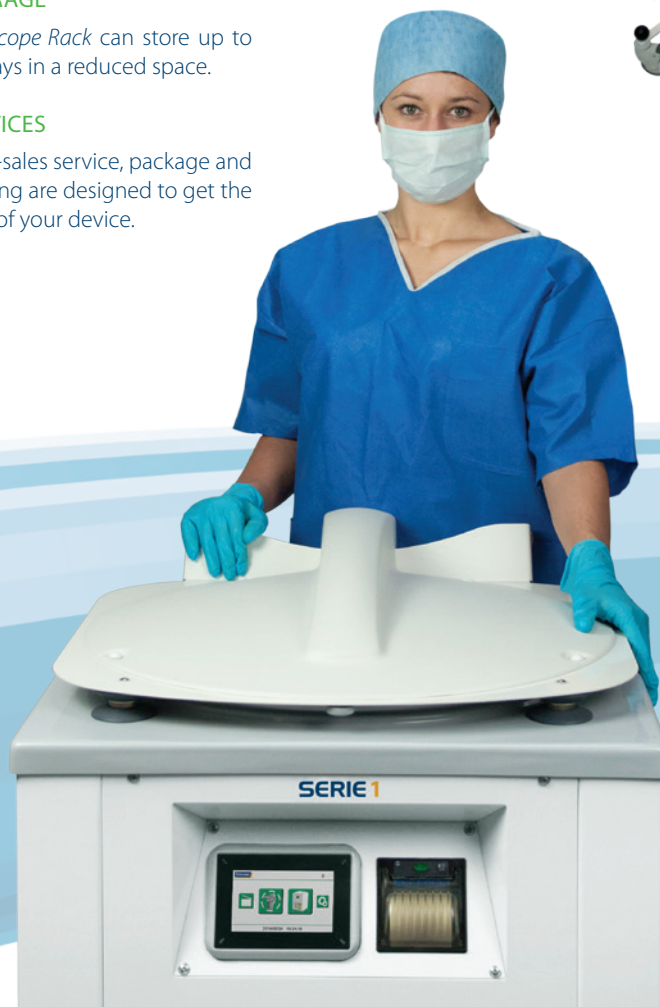
*Soluscope Trolley* is designed to dispatch endoscopes from treatment to examination room. The specific tray equipped with a transparent lid safely stores the endoscope during its transportation. *Soluscope transport solution* facilitates your daily routine in a secure manner.

## STORAGE

*Soluscope Rack* can store up to 10 trays in a reduced space.

## SERVICES

After-sales service, package and training are designed to get the best of your device.



## TECHNICAL SPECIFICATIONS

Capacity per cycle	1 endoscope, processing by immersion
Reprocessing cycle time	22 minutes for PA (cycle 1) 26 minutes for GTA/OPA (cycle 1)
Reprocessing temperature	40°C (PA/GTA/OPA)
Contact time / Disinfection	6 minutes for PA 10 minutes for GTA/OPA
Traceability	Printer (optional)
Electrical connection	1 x 220-240 V* or 1 x 110-120 V* *with 30 mA differential power breaker
Power supply	220-240V/50Hz • 110-120V/60Hz
Water input	Tap water
Water pressure	< 4 bars (58 psi)
Water flow rate	9 L / min minimum
Water hardness	10 to 30 TH (150 mg / L CaCO <sub>3</sub> )
Water pH	6.5 to 9
Fouling index	< 3
Dimensions (W x D x H)	61.5 x 65 x 101 cm (closed lid) 61.5 x 65 x 146.5 cm (open lid)
Weight (empty)	67 Kg
Weight (full)	97 Kg

CE  
0843





## SOLUSCOPE COMPLETE SOLUTION

*Soluscope* proposes a complete solution for flexible endoscope reprocessing.

It offers products for every step of the reprocessing cycle.

Each part is certified, easy to use and effective in order to reduce your daily load.



**[www.soluscope.com](http://www.soluscope.com)**

**Soluscope SAS** : 100, rue du Fauge - Z.I. Les Paluds - 13400 Aubagne - France

☎ +33 (0)4 91 83 21 22 📠 +33 (0)4 91 83 21 10 ✉ [info@soluscope.com](mailto:info@soluscope.com)

*Soluscope* products are compliant with *European and international norms*, and are *CE marked*. *ISO 9001 version 2008* and *EN ISO 13485 version 2012* certified, *Soluscope* is continuously committed to satisfying its clients rigorous demands.

distributed by

