

S40 Booth

ASSEMBLY GUIDE

step-by-step



Sibelmed®

Assembly guide for the S40 Booth



Congratulations! You have just purchased a top-quality SIBELMED audiometric booth, with an elegant design and easy assembly.

The S40 Booth is delivered as separate parts that can be easily assembled and disassembled, **with no need for specialized skills or tools.**



Before starting

Before starting your booth assembly, read this guide carefully. Make sure that the packaging does not show any damage caused by transport and that none of the parts inside are damaged.

Clear the space where the booth will be located. You must leave at least 5 cm of space between the rear part of the booth and the wall behind it, so that all parts can be assembled without difficulty.

Tools included

A #5 Allen key



Phillips-head screwdriver



Warnings

Be sure to wear appropriate footwear and, if necessary, protective gloves when handling the parts from the booth that are heavy, sharp, or cumbersome.



Two people are required to assemble the S40 Booth, due to the weight and size of the panels.

Assembly guide for the S40 Booth



Components of the S40 Booth



1 door handle



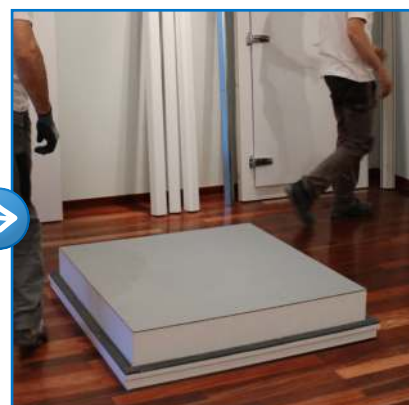
32 #5 Allen screws
16 cross-head screws and
8 wood screws



1. Floor

We begin by placing **the washable floor**.

The gray side of the floor should be placed upwards, leaving the large part of the base downwards.



Assembly guide for the S40 Booth

Sibelmed®

2. Window Panel

Place the front panel lightly inclined over the dark edge that protrudes from the floor base.



IMPORTANT: : In the standard booth, the foam covers the whole panel. In the "deluxe" option, the foam covers only until the base step (see picture).

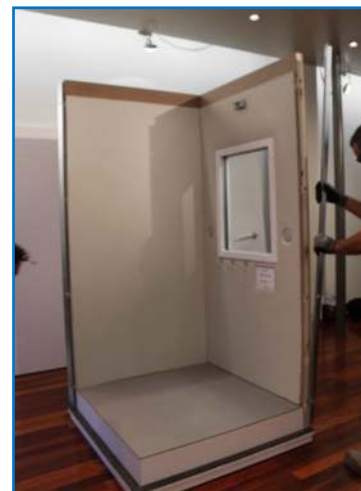


IMPORTANT: Support the front panel until the rear panel and the iron edge pieces are put in place.

3. Side Panel

In the same way, place the panel lightly inclined over the dark edge that protrudes from the floor base.

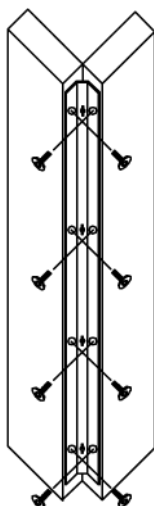
Next, affix the iron edge pieces to each side of the window panel and side panel.



4. Easy to Join Together

The different **panels** that make up the S40 booth are screwed together using the iron **edge pieces** and the screws provided.

Assembly is easy: once the two panels have been put up, the edge pieces are installed on the outside of the booth, joining the panels together from bottom to top with 8 #5 Allen screws.



Assembly guide for the S40 Booth



5. Door Panel

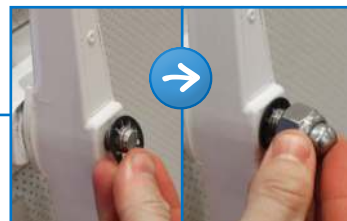


IMPORTANT: Before handling this panel, install the door handle.

Once the door handle has been installed, secure the iron edge piece to the window panel.

Next, place the door panel in the same way as previously described, and adjust the iron edge piece with the window panel.

Then, place the iron edge piece on the other side of the door panel.



IMPORTANT:

Keep the door closed until all the panels have been assembled.

6. Roof*

Carefully slide the roof like a drawer over the 3 assembled panels, without leaving any gaps.

Ventilation

Place the ventilation grill on the side opposite the window.



*Tighten the roof screws, once all panels have been assembled.

Assembly guide for the S40 Booth

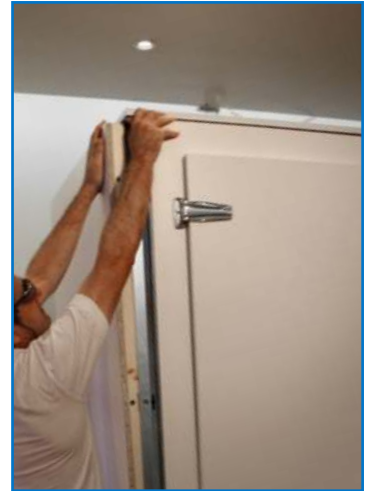


7. Rear Panel

Place the rear panel in the same way as for the other panels.

To adjust it, slightly lift the roof until the panel slots in.

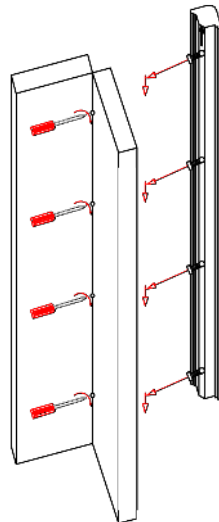
Next, secure both sides of the iron edge pieces.



8. White Edge Pieces

Place the outside white edge pieces one by one: Support the lower part of the edge piece in the corner of the booth, and bring it closer lengthwise. Then, slide it slightly up and down until it fits perfectly in the corner.

Next, adjust the edge piece to the inside part of the booth;



to do this, use a cross-head screwdriver. Gently move the screwdriver up and down along the length of the corner, until each of the 4 cross-head screws of the edge piece are located. Once the screw has been located, tighten it using the screwdriver.

Repeat this for the other 3 edge pieces.

9. Secure the Roof

Once all 4 panels and the 4 edge pieces are in place, secure the roof by tightening the 8 wood screws.



10. Lighting

Remove the lamp protector and insert it in the lamp holder by pressing gently.



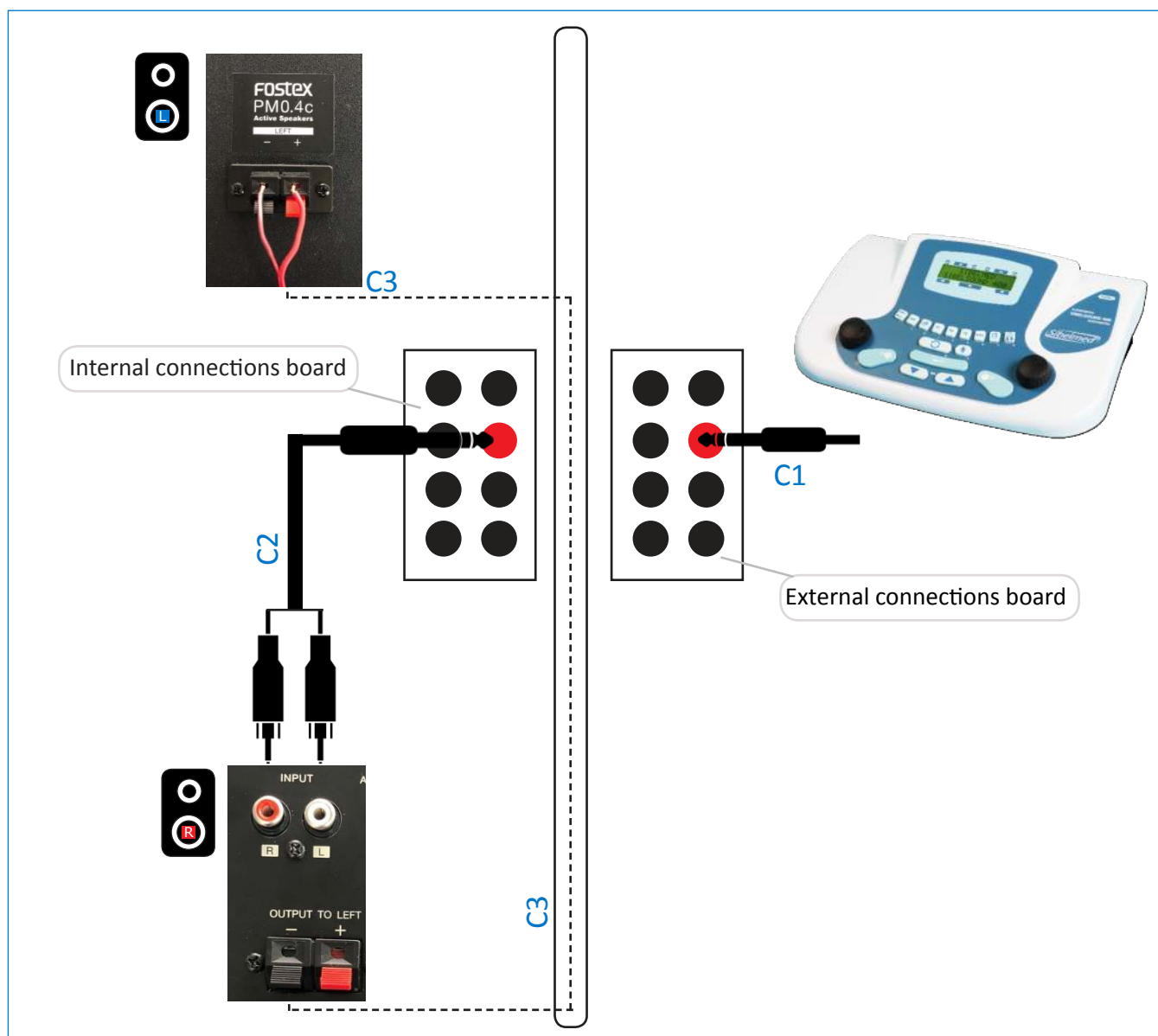
Pre-assembled free-field system

- **Connecting a free-field system in a SibelSound 400 or other type of audiometer that only has one output connector:**

1. Connect the audiometer free-field output with the cable (C1) to one of the booth connectors.
2. On the board situated inside the booth, connect the cable (C2) to the previously-chosen connector.
Next, connect this cable to free-field speaker inputs.
3. Strip the cables (C3) and connect them to the speaker 1 output and the speaker 2 input.

Cables:

- C1 6.3 jack to 6.3 jack audiometer connection cable.
- C1 6.3 jack to 2 RCA speaker connection cable.
- C3 Two-core cable assembled in the booth.



- **Connecting a free-field system in audiometers that have two output connectors:**

Connect the adapter between the audiometer and the cable (C1) and perform the conexions according to point 1 to 3 (this adapter is not supplied).

Assembly guide for the S40 Booth



Options*

- Wheelchair ramp access (Code 02756)
- Wheels models A/D (Code 02789)
- Wheels models B/C/E (Code 08898)
- Panel with 8 connectors B/C/E/F (Code 09079, 09117)
- Door opening
- Door panel location
- Flameproof materials
- 110 V / 50-60 Hz power supply

*Check when placing the order.

Congratulations! You can now enjoy the Sibelmed S40 Booth. To dismantle it, simply follow these steps in reverse order.



 Product in compliance with medical device regulation (EU) 2017/745. Class I.

 **SIBEL S.A.U.** Rosellón 500 bajos, 08026 BARCELONA (Spain)
Domestic Sales: Tel. 93 436 00 08 · e-mail: comercial@sibelmed.com
International Sales: Tel. +34 93 436 00 07 e-mail: export@sibelmed.com
Post-Sale Service: Tel. +34 93 433 54 50 · e-mail: sat@sibelmed.com
Fax: +34 93 436 16 11 www.sibelmed.com



www.sibelmed.com