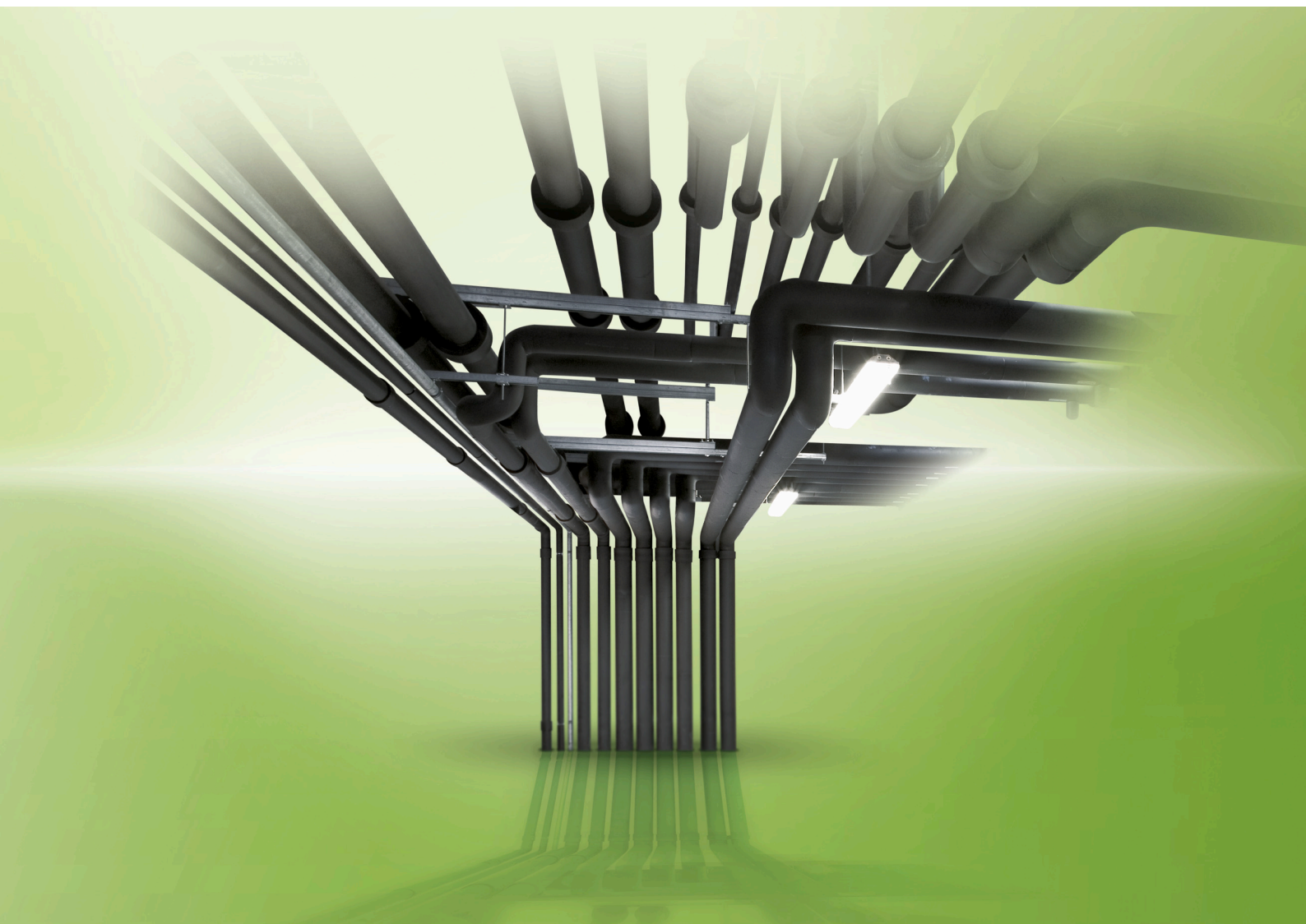




ARMAFLEX XG

THE VERSATILE SOLUTION FOR
PROFESSIONALS



- Full range for easy application on all pipe and duct sizes
- Effective reduction of thermal losses
- System security with Armafix and Armaflex Adhesives
- Available as lap-seal and top-seal solutions

Technical Data - Armaflex XG

Brief description	Highly-flexible, closed-cell insulation material with high water vapour diffusion resistance and low thermal conductivity.
Material type	Elastomeric foam based on synthetic rubber. Factory made flexible elastomeric foam (FEF) according to EN 14304.
Colour	black
Material Special Information	Self-adhesive coating: pressure-sensitive adhesive coating on modified acrylate basis with mesh structure. Covered with polyethylene foil. Traces of silicon can be found on the protection paper/foil used to protect self-adhesive closures.
Applications	Insulation / protection of pipes, air ducts, vessels (incl. elbows, fittings, flanges etc.) of air-conditioning, refrigeration and process equipment to prevent condensation and save energy as well as insulation of pipes in sanitary and heating applications.
Remarks	Declaration of Performance is available in accordance with Article 7(3) of Regulation (EU) No 305/2011 on our homepage: www.armacell.com/DoP

Property	Value/Assessment	Test ¹	Super- vision ²	Special Remark
Temperature Range				
Temperature Range	max. service temperature +110 °C min. service temperature ¹ -50 °C	(+85 °C if sheet or tape is glued to the object with its whole surface.) EU 5702	o/●	Tested acc.to EN 14706, EN 14707 and EN 14304
Thermal Conductivity				
Thermal Conductivity	ϑ_m +/-0 °C λ ≤ 0,035 W/(m · K)	λ= [35 + 0,1 · ϑ_m + 0,0008 · ϑ_m^2]/1000	EU 5702	o/● Declared acc. to EN ISO 13787 Tested acc. to EN 12667 EN ISO 8497
	Sheets 6-25 mm, tape λ ≤ 0,035 W/(m · K)	[35 + 0,1 · ϑ_m + 0,0008 · ϑ_m^2]/1000		
	tubes 25-40 mm λ ≤ 0,036 W/(m · K)	[36 + 0,1 · ϑ_m + 0,0008 · ϑ_m^2]/1000		
	sheets 32-40 mm λ ≤ 0,036 W/(m · K)	[36 + 0,1 · ϑ_m + 0,0008 · ϑ_m^2]/1000		
Water vapour diffusion resistance				
Water vapour diffusion resistance	sheets 6-25 mm; tubes 6-19 mm μ ≥ 10.000		EU 5702	o/● Tested acc. to EN 12086 EN 13469
	sheets 32-40 mm; tubes 25-40 mm μ ≥ 7.000			
Fire performance				
Reaction to fire	tubes sheets tape	B _L -s3, d0 B-s3,d0 B-s3, d0	EU 5702	o/● Classified acc. to EN 13501-1 Tested acc. to EN 13823 EN ISO 11925-2
Practical Fire Behaviour	Self-extinguishing, does not drip, does not spread flames			
Other technical features				
Dimensions and tolerances	In accordance with EN 14304, table 1		EU 5702	o/● Tested according to EN 822, EN 823, EN 13467
UV resistance ²	Protection against UV-radiation is necessary.		TB 142	
Storage & Shelf life	Self-adhesive tapes, self-adhesive sheets, self-adhesive tubes: 1 year			Can be stored in dry, clean rooms at normal relative humidity (50% to 70%) and ambient temperature (0 °C – 35 °C).

1. For temperatures below -50 °C please contact our Customer Service Center to request for the corresponding technical information.

2. If Armaflex is applied under UV-radiation the material must be protected within 3 days with a covering.

*1 Further documents such as test certificates, approvals and the like can be requested using the registration number given.

*2 ●: Official supervision by independent institutes and /or test authorities
○: Own in-factory quality monitoring

All data and technical information are based on results achieved under typical application conditions. Recipients of this information should, in their own interest and responsibility, clarify with us in due time whether or not the data and information apply to the intended application area. Installation instructions are available in our Armaflex installation manual. Please consult our Customer Service Center before insulating stainless steels. For some refrigerants the discharge temperature may exceed +110 °C, please consult our Customer Service Center for further information.

Armaflex XG tubes



Length 2,0 m, Color black

Pipe max. Outside-Ø [mm]	6,0 mm insulation thickness			9,0 mm insulation thickness		
	Code	m/carton	€/m	Code	m/carton	€/m
6	XG-06X006	496	xxx	XG-09X006	352	xxx
8	XG-06X008	432	xxx	XG-09X008	300	xxx
10	XG-06X010 •	380	xxx	XG-09X010	266	xxx
12	XG-06X012	330	xxx	XG-09X012	234	xxx
15	XG-06X015	280	xxx	XG-09X015	200	xxx
18	XG-06X018	210	xxx	XG-09X018	166	xxx
20	-	-	-	XG-09X020 •	140	xxx
22	XG-06X022	170	xxx	XG-09X022	140	xxx
25	-	-	-	XG-09X025 •	108	xxx
28	XG-06X028	112	xxx	XG-09X028	98	xxx
30	-	-	-	XG-09X030 •	92	xxx
32	-	-	-	XG-09X032 •	80	xxx
35	XG-06X035 •	92	xxx	XG-09X035	76	xxx
40	-	-	-	XG-09X040 •	66	xxx
42	-	-	-	XG-09X042	64	xxx
48	-	-	-	XG-09X048	54	xxx
50	-	-	-	XG-09X050 •	46	xxx
54	-	-	-	XG-09X054	52	xxx
60	-	-	-	XG-09X060	48	xxx
64	-	-	-	XG-09X064	44	xxx
70	-	-	-	XG-09X070 •	32	xxx
76	-	-	-	XG-09X076	32	xxx
89	-	-	-	XG-09X089	28	xxx
102	-	-	-	XG-09X102 •	26	xxx
108	-	-	-	XG-09X108 •	26	xxx
110	-	-	-	XG-09X110 •	24	xxx
114	-	-	-	XG-09X114	24	xxx
125	-	-	-	XG-09X125 •	14	xxx
140	-	-	-	XG-09X140 •	14	xxx
160	-	-	-	XG-09X160 •	10	xxx

Armaflex XG tubes



Length 2,0 m, Color black

Pipe max. Outside-Ø [mm]	13,0 mm insulation thickness			19,0 mm insulation thickness		
	Code	m/carton	€/m	Code	m/carton	€/m
6	XG-13X006	200	xxx	XG-19X006	100	xxx
10	XG-13X010	172	xxx	XG-19X010	92	xxx
12	XG-13X012	162	xxx	XG-19X012	84	xxx
15	XG-13X015	122	xxx	XG-19X015	72	xxx
18	XG-13X018	104	xxx	XG-19X018	60	xxx
20	XG-13X020 ●	104	xxx	XG-19X020 ●	58	xxx
22	XG-13X022	100	xxx	XG-19X022	56	xxx
25	XG-13X025 ●	88	xxx	XG-19X025 ●	50	xxx
28	XG-13X028	82	xxx	XG-19X028	48	xxx
30	XG-13X030 ●	72	xxx	-	-	-
32	XG-13X032 ●	64	xxx	XG-19X032 ●	36	xxx
35	XG-13X035	60	xxx	XG-19X035	36	xxx
40	XG-13X040 ●	50	xxx	XG-19X040 ●	32	xxx
42	XG-13X042	50	xxx	XG-19X042	32	xxx
48	XG-13X048	42	xxx	XG-19X048	28	xxx
50	XG-13X050 ●	38	xxx	XG-19X050 ●	24	xxx
54	XG-13X054	38	xxx	XG-19X054	24	xxx
60	XG-13X060	32	xxx	XG-19X060	24	xxx
64	XG-13X064	30	xxx	XG-19X064	20	xxx
70	XG-13X070 ●	28	xxx	XG-19X070 ●	18	xxx
76	XG-13X076	28	xxx	XG-19X076	18	xxx
80	XG-13X080 ●	20	xxx	XG-19X080 ●	16	xxx
89	XG-13X089	20	xxx	XG-19X089	16	xxx
102	XG-13X102 ●	20	xxx	XG-19X102	16	xxx
108	XG-13X108	20	xxx	XG-19X108	16	xxx
110	-	-	-	XG-19X110 ●	14	xxx
114	XG-13X114	20	xxx	XG-19X114	14	xxx
125	XG-13X125	18	xxx	XG-19X125	10	xxx
133	XG-13X133	16	xxx	XG-19X133	10	xxx
140	XG-13X140 ●	12	xxx	XG-19X140	10	xxx
160	XG-13X160	12	xxx	XG-19X160	10	xxx
168	-	-	-	XG-19X168	8	xxx

Pipe max. Outside-Ø [mm]	25,0 mm insulation thickness			30,0 mm insulation thickness		
	Code	m/carton	€/m	Code	m/carton	€/m
10	XG-25X010	60	xxx	-	-	-
12	XG-25X012	54	xxx	-	-	-
15	XG-25X015	48	xxx	-	-	-
18	XG-25X018	40	xxx	-	-	-
22	XG-25X022	40	xxx	-	-	-
28	XG-25X028	36	xxx	-	-	-
30	XG-25X030 ●	30	xxx	-	-	-
32	XG-25X032 ●	-	xxx	-	-	-
35	XG-25X035	24	xxx	-	-	-
40	XG-25X040	-	xxx	-	-	-
42	XG-25X042	24	xxx	XG-30X042 ●	22	xxx
48	XG-25X048	20	xxx	XG-30X048 ●	18	xxx
54	XG-25X054	18	xxx	XG-30X054 ●	16	xxx
60	XG-25X060	18	xxx	XG-30X060 ●	12	xxx
64	XG-25X064	16	xxx	XG-30X064 ●	12	xxx
70	XG-25X070	-	xxx	-	-	-
76	XG-25X076	12	xxx	XG-30X076 ●	10	xxx
89	XG-25X089	12	xxx	XG-30X089 ●	10	xxx
102	XG-25X102 ●	8	xxx	-	-	-
108	XG-25X108	8	xxx	-	-	-
114	XG-25X114	10	xxx	-	-	-
140	XG-25X140 ●	4	xxx	-	-	-

Armaflex XG tubes



Length 2,0 m, Color black

Pipe max. Outside-Ø [mm]	32,0 mm insulation thickness			40,0 mm insulation thickness		
	Code	m/carton	€/m	Code	m/carton	€/m
15	XG-32X015	32	xxx	-	-	-
18	XG-32X018	32	xxx	-	-	-
20	XG-32X020	24	xxx	-	-	-
22	XG-32X022	24	xxx	-	-	-
25	XG-32X025	24	xxx	-	-	-
28	XG-32X028	24	xxx	XG-40X028	18	xxx
32	XG-32X032	18	xxx	-	-	-
35	XG-32X035	18	xxx	XG-40X035 ●	16	xxx
40	XG-32X040 ●	18	xxx	-	-	-
42	XG-32X042	18	xxx	XG-40X042	12	xxx
48	XG-32X048	18	xxx	XG-40X048	12	xxx
50	XG-32X050 ●	12	xxx	-	-	-
54	XG-32X054	12	xxx	XG-40X054	10	xxx
60	XG-32X060	10	xxx	XG-40X060	10	xxx
64	XG-32X064	10	xxx	XG-40X064 ●	10	xxx
70	XG-32X070 ●	10	xxx	-	-	-
76	XG-32X076	10	xxx	XG-40X076	8	xxx
80	XG-32X080 ●	10	xxx	-	-	-
89	XG-32X089	10	xxx	XG-40X089 ●	6	xxx
102	XG-32X102	6	xxx	XG-40X102 ●	8	xxx
108	XG-32X108	6	xxx	XG-40X108 ●	4	xxx
114	XG-32X114	8	xxx	XG-40X114	6	xxx
125	XG-32X125 ●	6	xxx	XG-40X125 ●	4	xxx
133	XG-32X133 ●	6	xxx	-	-	-
140	XG-32X140	6	xxx	XG-40X140 ●	4	xxx
160	XG-32X160	4	xxx	XG-40X160 ●	4	xxx
168	-	-	-	XG-40X168 ●	4	xxx

Length tolerance for tubes	±1,5 %	
Thickness tolerance	≤ 8 mm:	±1,0 mm
	9 -18 mm:	±1,5 mm
	19 - 31 mm:	±2,5 mm
	> 31 mm:	±3,0 mm

● Item not in stock. Delivery on request. [MTO]

Armaflex XG tubes [additional table to display with itemgroups of local regulation]



Pipe max. Outside-Ø [mm]	[ES] For Interior application [0-10 °C] [ES] Temperature of the medium 0 °C to 10 °C			[ES] For Interior application [40-60 °C] [ES] Temperature of the medium 40 °C to 60 °C		
	Code	m/carton	€/m	Code	m/carton	€/m
12	XG-25X012	54	xxx	-	-	-
15	XG-25X015	48	xxx	XG-32X015	32	xxx
18	XG-25X018	40	xxx	XG-32X018	32	xxx
20	-	-	-	XG-32X020	24	xxx
22	XG-25X022	40	xxx	XG-32X022	24	xxx
25	-	-	-	XG-32X025	24	xxx
28	XG-25X028	36	xxx	XG-32X028	24	xxx
32	-	-	-	XG-32X032	18	xxx
35	XG-25X035	24	xxx	XG-32X035	18	xxx
42	XG-30X042 ●	22	xxx	XG-30X042 ●	22	xxx
48	XG-30X048 ●	18	xxx	XG-30X048 ●	18	xxx
54	XG-30X054 ●	16	xxx	XG-30X054 ●	16	xxx
60	XG-30X060 ●	12	xxx	XG-30X060 ●	12	xxx
64	XG-30X064 ●	12	xxx	XG-30X064 ●	12	xxx
76	XG-30X076 ●	10	xxx	XG-30X076 ●	10	xxx
89	XG-30X089 ●	10	xxx	XG-30X089 ●	10	xxx
102	XG-40X102 ●	8	xxx	XG-32X102	6	xxx
114	-	-	-	XG-32X114	8	xxx
125	XG-40X125 ●	4	xxx	XG-32X125 ●	6	xxx
140	-	-	-	XG-32X140	6	xxx
160	-	-	-	XG-40X160 ●	4	xxx
168	-	-	-	XG-40X168 ●	4	xxx

Pipe max. Outside-Ø [mm]	[ES] For Interior application >60-100 °C [ES] Temperature of the medium > 60 °C to 100 °C			[PT] For Interior application [0-10 °C] [PT] Temperature of the medium 0 °C to 10 °C		
	Code	m/carton	€/m	Code	m/carton	€/m
6	-	-	-	XG-19X006	100	xxx
10	-	-	-	XG-19X010	92	xxx
12	XG-25X012	54	xxx	XG-19X012	84	xxx
15	XG-25X015	48	xxx	XG-19X015	72	xxx
18	XG-25X018	40	xxx	XG-19X018	60	xxx
20	-	-	-	XG-19X020 ●	58	xxx
22	XG-25X022	40	xxx	XG-19X022	56	xxx
25	-	-	-	XG-19X025 ●	50	xxx
28	XG-25X028	36	xxx	XG-19X028	48	xxx
32	-	-	-	XG-19X032 ●	36	xxx
35	XG-25X035	24	xxx	XG-19X035	36	xxx
42	XG-30X042 ●	22	xxx	XG-30X042 ●	22	xxx
48	XG-30X048 ●	18	xxx	XG-30X048 ●	18	xxx
54	XG-30X054 ●	16	xxx	XG-30X054 ●	16	xxx
60	XG-30X060 ●	12	xxx	XG-30X060 ●	12	xxx
64	XG-30X064 ●	12	xxx	XG-30X064 ●	12	xxx
76	XG-30X076 ●	10	xxx	XG-30X076 ●	10	xxx
89	XG-30X089 ●	10	xxx	XG-30X089 ●	10	xxx
102	XG-40X102 ●	8	xxx	XG-40X102 ●	8	xxx
114	XG-40X114	6	xxx	-	-	-
125	XG-40X125 ●	4	xxx	XG-40X125 ●	4	xxx
140	XG-40X140 ●	4	xxx	-	-	-
160	XG-40X160 ●	4	xxx	-	-	-
168	XG-40X168 ●	4	xxx	-	-	-

Armaflex XG tubes [additional table to display with itemgroups of local regulati



Pipe max. Outside-Ø [mm]	[PT] For Interior application [40-65 °C] [PT] Temperature of the medium 40 °C to 65 °C			[PT] For Interior application [66-100 °C] [PT] Temperature of the medium 66 °C to 100 °C		
	Code	m/carton	€/m	Code	m/carton	€/m
6	XG-19X006	100	xxx	XG-19X006	100	xxx
10	XG-19X010	92	xxx	XG-19X010	92	xxx
12	XG-19X012	84	xxx	XG-19X012	84	xxx
15	XG-19X015	72	xxx	XG-19X015	72	xxx
18	XG-19X018	60	xxx	XG-19X018	60	xxx
20	XG-19X020 ●	58	xxx	XG-19X020 ●	58	xxx
22	XG-19X022	56	xxx	XG-19X022	56	xxx
25	XG-19X025 ●	50	xxx	XG-19X025 ●	50	xxx
28	XG-19X028	48	xxx	XG-19X028	48	xxx
32	XG-19X032 ●	36	xxx	XG-19X032 ●	36	xxx
35	XG-19X035	36	xxx	XG-19X035	36	xxx
42	XG-19X042	32	xxx	XG-30X042 ●	22	xxx
48	XG-19X048	28	xxx	XG-30X048 ●	18	xxx
54	XG-19X054	24	xxx	XG-30X054 ●	16	xxx
60	XG-30X060 ●	12	xxx	XG-30X060 ●	12	xxx
64	XG-30X064 ●	12	xxx	XG-30X064 ●	12	xxx
76	XG-30X076 ●	10	xxx	XG-30X076 ●	10	xxx
89	XG-30X089 ●	10	xxx	XG-30X089 ●	10	xxx
102	XG-32X102	6	xxx	XG-40X102 ●	8	xxx
114	XG-32X114	8	xxx	-	-	-
125	XG-32X125 ●	6	xxx	XG-40X125 ●	4	xxx
140	XG-32X140	6	xxx	-	-	-
160	XG-32X160	4	xxx	-	-	-

Pipe max. Outside-Ø [mm]	[FR] RT 2012- Heating and Plumbing - Standard Class 2 - TS/LS [60 °C] [FR] Temp. of the medium 60 °C, ambient temperature 10 °C			[FR] RT 2012- Heating and Plumbing - Standard Class 2 [60 °C] [FR] Temp. of the medium 60 °C, ambient temperature 10 °C		
	Code	m/carton	€/m	Code	m/carton	€/m
12	XG-09X015-TS ●	200	xxx	XG-09X012	234	xxx
15	XG-09X015-TS ●	200	xxx	XG-09X015	200	xxx
18	XG-13X018-TS	104	xxx	XG-13X018	104	xxx
20	XG-13X022-TS	100	xxx	XG-13X020 ●	104	xxx
22	XG-13X022-TS	100	xxx	XG-13X022	100	xxx
25	XG-19X028-TS	48	xxx	XG-19X025 ●	50	xxx
28	XG-19X028-TS	48	xxx	XG-19X028	48	xxx
32	XG-19X035-TS	36	xxx	XG-19X032 ●	36	xxx
35	XG-19X035-TS	36	xxx	XG-19X035	36	xxx
40	XG-25X042-TS	24	xxx	XG-25X042	24	xxx
42	XG-25X042-TS	24	xxx	XG-25X042	24	xxx
48	XG-25X048-TS	20	xxx	XG-25X048	20	xxx
50	XG-32X054-TS	12	xxx	XG-32X050 ●	12	xxx
54	XG-32X054-TS	12	xxx	-	-	-
60	XG-32X060-TS	10	xxx	XG-32X060	10	xxx
64	XG-32X064-TS	10	xxx	XG-32X064	10	xxx
70	-	-	-	XG-32X070 ●	10	xxx
76	XG-32X076-TS	10	xxx	XG-32X076	10	xxx
80	-	-	-	XG-32X080 ●	10	xxx
89	XG-32X089-TS	10	xxx	XG-32X089	10	xxx
102	-	-	-	XG-40X102 ●	8	xxx
108	-	-	-	XG-40X108 ●	4	xxx
114	-	-	-	XG-40X114	6	xxx
140	-	-	-	XG-40X140 ●	4	xxx
160	-	-	-	XG-40X160 ●	4	xxx
168	-	-	-	XG-40X168 ●	4	xxx

Armaflex XG tubes [additional table to display with itemgroups of local regulati



Pipe max. Outside- Ø [mm]	[FR] BBC - Heating and Plumbing - Standard Class 4 - TS/LS [60 °C] [FR] Temp. of the medium 60 °C, ambient temperature 10 °C			[FR] BBC - Heating and Plumbing - Standard Class 4 [60 °C] [FR] Temp. of the medium 60 °C, ambient temperature 10 °C		
	Code	m/carton	€/m	Code	m/carton	€/m
12	XG-13X012-TS ●	162	xxx	XG-13X012	162	xxx
15	XG-19X015-TS	72	xxx	XG-19X015	72	xxx
18	XG-25X018-TS ●	40	xxx	XG-25X018	40	xxx
20	XG-25X022-TS	40	xxx	XG-25X020		xxx
20	-	-	-	XG-25X022	40	xxx
22	XG-32X022-TS	28	xxx	XG-32X022	24	xxx
25	XG-32X028-TS	24	xxx	XG-32X028	24	xxx
28	XG-32X028-TS	24	xxx	XG-32X028	24	xxx
30	-	-	-	XG-40X035 ●	16	xxx
32	-	-	-	XG-40X035 ●	16	xxx
35	-	-	-	XG-40X035 ●	16	xxx

Pipe max. Outside- Ø [mm]	[FR] RT 2012- Cold - Standard Class 3 - TS/LS [7 °C] [FR] Temp. of the medium 7 °C, ambient temperature 26 °C			[FR] RT 2012- Cold - Standard Class 3 [7 °C] [FR] Temp. of the medium 7 °C, ambient temperature 26 °C		
	Code	m/carton	€/m	Code	m/carton	€/m
12	XG-19X015-LS ●	72	xxx	XG-13X012	162	xxx
15	XG-19X015-LS ●	72	xxx	XG-13X015	122	xxx
18	XG-19X018-LS	60	xxx	XG-19X018	60	xxx
20	XG-19X022-LS	56	xxx	XG-19X020 ●	58	xxx
22	XG-19X022-LS	56	xxx	XG-19X022	56	xxx
25	XG-19X028-LS	48	xxx	XG-19X025 ●	50	xxx
28	XG-25X028-LS	36	xxx	XG-25X028	36	xxx
30	XG-25X035-LS	24	xxx	XG-25X030 ●	30	xxx
32	XG-25X035-LS	24	xxx	XG-25X035	24	xxx
35	XG-32X035-LS	18	xxx	XG-32X035	18	xxx
40	XG-32X042-LS	18	xxx	XG-32X040 ●	18	xxx
42	XG-32X042-LS	18	xxx	-	-	-
48	XG-32X048-LS	18	xxx	-	-	-
50	XG-40X054-LS ●	10	xxx	XG-40X054	10	xxx
54	XG-40X054-LS ●	10	xxx	XG-40X054	10	xxx
60	-	-	-	XG-40X060	10	xxx
64	-	-	-	XG-40X064 ●	10	xxx
70	XG-40X076-LS ●	8	xxx	XG-40X076	8	xxx
76	XG-40X076-LS ●	8	xxx	XG-40X076	8	xxx

Pipe max. Outside- Ø [mm]	[FR] BBC - Cold - Standard Class 4 - TS/LS [7 °C, 26 °C] [FR] Temp. of the medium 7 °C, ambient temperature 26 °C			[FR] BBC - Cold - Standard Class 4 [7 °C, 26 °C] [FR] Temp. of the medium 7 °C, ambient temperature 26 °C		
	Code	m/carton	€/m	Code	m/carton	€/m
12	XG-19X015-LS ●	72	xxx	XG-13X012	162	xxx
15	XG-19X015-LS ●	72	xxx	XG-19X015	72	xxx
18	XG-19X018-LS	60	xxx	XG-19X018	60	xxx
20	XG-25X022-LS ●	40	xxx	XG-25X022	40	xxx
22	XG-25X022-LS ●	40	xxx	XG-25X022	40	xxx
25	XG-32X028-LS	24	xxx	XG-25X025		xxx
25	-	-	-	XG-32X028	24	xxx
28	XG-32X028-LS	24	xxx	XG-32X028	24	xxx
30	XG-32X035-LS	18	xxx	XG-32X035	18	xxx
32	-	-	-	XG-40X035 ●	16	xxx
35	-	-	-	XG-40X035 ●	16	xxx
40	XG-40X042-LS ●	12	xxx	XG-40X042	12	xxx
42	XG-40X042-LS ●	12	xxx	XG-40X042	12	xxx

Thickness tolerance	≤ 8 mm:	±1,0 mm
	9 - 18 mm:	±1,5 mm
	19 - 31 mm:	±2,5 mm
	> 31 mm:	±3,0 mm

● Item not in stock. Delivery on request. [MTO]

Armaflex XG tubes lap-seal



Length 2,0 m, Color black, Triple adhesive tube (seams + insulating overlap), for cold applications.

Pipe max. Outside- Ø [mm]	9,0 mm insulation thickness			19,0 mm insulation thickness		
	Code	m/carton	€/m	Code	m/carton	€/m
15	-	-	-	XG-19X015-LS •	72	xxx
18	XG-09X018-LS •	140	xxx	XG-19X018-LS	60	xxx
22	XG-09X022-LS •	136	xxx	XG-19X022-LS	56	xxx
28	XG-09X028-LS •	98	xxx	XG-19X028-LS	48	xxx
35	XG-09X035-LS •	72	xxx	XG-19X035-LS	36	xxx
42	XG-09X042-LS •	60	xxx	XG-19X042-LS	32	xxx
54	XG-09X054-LS •	46	xxx	-	-	-
60	-	-	-	XG-19X060-LS	24	xxx
70	XG-09X070-LS •	32	xxx	-	-	-
114	-	-	-	XG-19X114-LS •	14	xxx

Pipe max. Outside- Ø [mm]	25,0 mm insulation thickness			32,0 mm insulation thickness		
	Code	m/carton	€/m	Code	m/carton	€/m
22	XG-25X022-LS •	40	xxx	XG-32X022-LS	24	xxx
28	XG-25X028-LS	36	xxx	XG-32X028-LS	24	xxx
35	XG-25X035-LS	24	xxx	XG-32X035-LS	18	xxx
42	XG-25X042-LS	24	xxx	XG-32X042-LS	18	xxx
48	XG-25X048-LS	20	xxx	XG-32X048-LS	18	xxx
76	XG-25X076-LS •	12	xxx	-	-	-
89	XG-25X089-LS •	12	xxx	-	-	-
102	-	-	-	XG-32X102-LS	6	xxx

Pipe max. Outside- Ø [mm]	40,0 mm insulation thickness					
	Code	m/carton	€/m			
42	XG-40X042-LS •	12	xxx	-	-	-
54	XG-40X054-LS •	10	xxx	-	-	-
76	XG-40X076-LS •	8	xxx	-	-	-
89	XG-40X089-LS •	6	xxx	-	-	-

Length tolerance for tubes	±1,5 %	
Thickness tolerance	≤ 8 mm:	±1,0 mm
	9 - 18 mm:	±1,5 mm
	19 - 31 mm:	±2,5 mm
	> 31 mm:	±3,0 mm

• Item not in stock. Delivery on request. [MTO]

Armaflex XG tubes top-seal



Length 2,0 m, Color black

Pipe max. Outside- Ø [mm]	9,0 mm insulation thickness			13,0 mm insulation thickness		
	Code	m/carton	€/m	Code	m/carton	€/m
12	-	-	-	XG-13X012-TS •	162	xxx
15	XG-09X015-TS •	200	xxx	XG-13X015-TS	122	xxx
18	XG-09X018-TS	166	xxx	XG-13X018-TS	104	xxx
22	XG-09X022-TS	140	xxx	XG-13X022-TS	100	xxx
28	XG-09X028-TS	98	xxx	XG-13X028-TS	82	xxx
35	XG-09X035-TS	76	xxx	XG-13X035-TS	60	xxx
42	XG-09X042-TS	64	xxx	XG-13X042-TS	50	xxx
48	XG-09X048-TS	54	xxx	XG-13X048-TS	42	xxx
54	XG-09X054-TS	52	xxx	XG-13X054-TS	38	xxx
60	XG-09X060-TS •	48	xxx	XG-13X060-TS	32	xxx
64	-	-	-	XG-13X064-TS •	30	xxx
76	-	-	-	XG-13X076-TS	28	xxx
89	-	-	-	XG-13X089-TS	20	xxx

Armaflex XG tubes top-seal



Length 2,0 m, Color black

Pipe max. Outside- Ø [mm]	19,0 mm insulation thickness			25,0 mm insulation thickness		
	Code	m/carton	€/m	Code	m/carton	€/m
12	XG-19X012-TS	84	xxx	-	-	-
15	XG-19X015-TS	72	xxx	-	-	-
18	XG-19X018-TS	64	xxx	XG-25X018-TS •	40	xxx
22	XG-19X022-TS	56	xxx	XG-25X022-TS	40	xxx
28	XG-19X028-TS	48	xxx	XG-25X028-TS	36	xxx
35	XG-19X035-TS	36	xxx	XG-25X035-TS	28	xxx
42	XG-19X042-TS	32	xxx	XG-25X042-TS	24	xxx
48	XG-19X048-TS	28	xxx	XG-25X048-TS	20	xxx
54	-	-	-	XG-25X054-TS	18	xxx
60	XG-19X060-TS	24	xxx	XG-25X060-TS	18	xxx
64	XG-19X064-TS	20	xxx	XG-25X064-TS	16	xxx
76	XG-19X076-TS	18	xxx	XG-25X076-TS	12	xxx
89	XG-19X089-TS	16	xxx	XG-25X089-TS	12	xxx

Pipe max. Outside- Ø [mm]	32,0 mm insulation thickness			40,0 mm insulation thickness		
	Code	m/carton	€/m	Code	m/carton	€/m
18	XG-32X018-TS •	32	xxx	-	-	-
22	XG-32X022-TS	28	xxx	XG-40X022-TS	-	xxx
28	XG-32X028-TS	24	xxx	XG-40X028-TS	18	xxx
35	XG-32X035-TS	18	xxx	XG-40X035-TS	16	xxx
42	XG-32X042-TS	18	xxx	XG-40X042-TS	12	xxx
48	XG-32X048-TS	18	xxx	XG-40X048-TS	12	xxx
54	XG-32X054-TS	12	xxx	XG-40X054-TS	10	xxx
60	XG-32X060-TS	10	xxx	XG-40X060-TS	10	xxx
64	XG-32X064-TS	10	xxx	XG-40X064-TS	10	xxx
70	XG-32X070-TS •	10	xxx	XG-40X070-TS	-	xxx
76	XG-32X076-TS	10	xxx	XG-40X076-TS	8	xxx
80	XG-32X080-TS •	10	xxx	-	-	-
89	XG-32X089-TS	10	xxx	XG-40X089-TS	6	xxx

Length tolerance for tubes	±1,5 %
Thickness tolerance	≤ 8 mm: ±1,0 mm
	9 - 18 mm: ±1,5 mm
	19 - 31 mm: ±2,5 mm
	> 31 mm: ±3,0 mm

• Item not in stock. Delivery on request. [MTO]

Armaflex XG tubes self-adhesive



Length 2,0 m, Color black

Pipe max. Outside- Ø [mm]	9,0 mm insulation thickness			13,0 mm insulation thickness		
	Code	m/carton	€/m	Code	m/carton	€/m
12	XG-09X012-A	234	xxx	XG-13X012-A	162	xxx
15	XG-09X015-A	200	xxx	XG-13X015-A	122	xxx
18	XG-09X018-A	166	xxx	XG-13X018-A	104	xxx
22	XG-09X022-A	140	xxx	XG-13X022-A	100	xxx
28	XG-09X028-A	98	xxx	XG-13X028-A	82	xxx
35	XG-09X035-A	76	xxx	XG-13X035-A	60	xxx
42	XG-09X042-A	64	xxx	XG-13X042-A	50	xxx
48	XG-09X048-A •	54	xxx	XG-13X048-A	42	xxx
54	XG-09X054-A •	52	xxx	XG-13X054-A	38	xxx
60	XG-09X060-A •	48	xxx	XG-13X060-A	32	xxx
76	-	-	-	XG-13X076-A	28	xxx
89	-	-	-	XG-13X089-A	20	xxx

Armaflex XG tubes self-adhesive



Length 2,0 m, Color black

Pipe max. Outside-Ø [mm]	19,0 mm insulation thickness			25,0 mm insulation thickness		
	Code	m/carton	€/m	Code	m/carton	€/m
15	XG-19X015-A ●	72	xxx	-	-	-
18	XG-19X018-A	60	xxx	XG-25X018-A ●	40	xxx
22	XG-19X022-A	56	xxx	XG-25X022-A	40	xxx
28	XG-19X028-A	48	xxx	XG-25X028-A	36	xxx
35	XG-19X035-A	36	xxx	XG-25X035-A	24	xxx
42	XG-19X042-A	32	xxx	XG-25X042-A	24	xxx
48	XG-19X048-A	28	xxx	XG-25X048-A	20	xxx
54	XG-19X054-A	24	xxx	XG-25X054-A	18	xxx
60	XG-19X060-A	24	xxx	XG-25X060-A	18	xxx
76	XG-19X076-A	18	xxx	XG-25X076-A	12	xxx
89	XG-19X089-A	16	xxx	XG-25X089-A	12	xxx

Length tolerance for tubes	±1,5 %	
Thickness tolerance	≤ 8 mm:	±1,0 mm
	9 - 18 mm:	±1,5 mm
	19 - 31 mm:	±2,5 mm
	> 31 mm:	±3,0 mm

● Item not in stock. Delivery on request. [MTO]

Armaflex XG tubes endless



Color black

Pipe max. Outside-Ø [mm]	6,0 mm insulation thickness			9,0 mm insulation thickness		
	Code	m/carton	€/m	Code	m/carton	€/m
6	XG-06X006/E	95	xxx	XG-09X006/E	70	xxx
8	XG-06X008/E	85	xxx	XG-09X008/E ●	60	xxx
10	XG-06X010/E	75	xxx	XG-09X010/E	50	xxx
12	XG-06X012/E	65	xxx	XG-09X012/E	45	xxx
15	XG-06X015/E	55	xxx	XG-09X015/E	40	xxx
18	XG-06X018/E	45	xxx	XG-09X018/E	38	xxx
22	XG-06X022/E	40	xxx	XG-09X022/E	30	xxx
28	XG-06X028/E	30	xxx	XG-09X028/E	26	xxx

Pipe max. Outside-Ø [mm]	13,0 mm insulation thickness					
	Code	m/carton	€/m			
6	XG-13X006/E	45	xxx	-	-	-
10	XG-13X010/E	35	xxx	-	-	-
12	XG-13X012/E	32	xxx	-	-	-
15	XG-13X015/E	28	xxx	-	-	-
18	XG-13X018/E	27	xxx	-	-	-
22	XG-13X022/E	26	xxx	-	-	-
28	XG-13X028/E	20	xxx	-	-	-

Length tolerance for tubes	±1,5 %	
Thickness tolerance	≤ 8 mm:	±1,0 mm
	9 - 18 mm:	±1,5 mm
	19 - 31 mm:	±2,5 mm
	> 31 mm:	±3,0 mm

● Item not in stock. Delivery on request. [MTO]

Armaflex XG sheets endless



Width 1,0 m

Code	Insulation thickness [mm]	Roll length [m]	m ² /carton	€/m ²
XG-06-99/E	6,0	15	15	xxx
XG-09-99/E	9,0	10	10	xxx
XG-13-99/E	13,0	8	8	xxx
XG-19-99/E	19,0	6	6	xxx
XG-25-99/E	25,0	4	4	xxx
XG-32-99/E	32,0	3	3	xxx
XG-40-99/E	40,0	7	7	xxx

Length tolerance for sheets	±1,5 %
Thickness tolerance for sheets	≤ 6 mm: ±1,0 mm
	7 -19 mm: ±1,5 mm
	>19 mm: ±2,0 mm

Armaflex XG sheets endless self-adhesive



Width 1,0 m, Color black

Code	Insulation thickness [mm]	Roll length [m]	m ² /carton	€/m ²
XG-06-99/EA	6,0	15	15	xxx
XG-09-99/EA	9,0	10	10	xxx
XG-13-99/EA	13,0	8	8	xxx
XG-19-99/EA	19,0	6	6	xxx
XG-25-99/EA	25,0	4	4	xxx
XG-32-99/EA	32,0	3	3	xxx
XG-40-99/EA	40,0	7	7	xxx

Length tolerance for sheets	±1,5 %
Thickness tolerance for sheets	≤ 6 mm: ±1,0 mm
	7 -19 mm: ±1,5 mm
	>19 mm: ±2,0 mm

Armaflex XG tapes



Color black, Armaflex XG Top seal tape

Code	Width [mm]	Length [m]	Thickness [mm]	Rolls/carton	€/roll
TS-TAPE-35	35,0	25	0,11	9	xxx

Armaflex XG tapes self-adhesive



Code	Width [mm]	Length [m]	Thickness [mm]	Rolls/carton	€/roll
XG-TAPE	50,0	15	3	12	xxx

Armacell GmbH

Robert Bosch Str. 10 • 48153 Muenster • Germany
 Phone +49 (0) 251 / 76 03-0 • Fax +49 (0) 251 / 76 03-448
 www.armacell.com • info@armacell.com

UN SYSTÈME COMPLET

Armacell offre une solution complète soigneusement coordonnée et bien pensée pour tous les défis d'isolation

professionnelle : Armaflex XG manchons standards, auto-adhésifs, Lap Seal et Top Seal, couronnes, rouleaux standards et auto-adhésifs et Tape auto-adhésifs + supports de tuyauterie Armafix X pour éviter les ponts thermiques et manchons coupe-feu Armaflex Protect.

La vaste gamme d'accessoires spécialement conçus pour

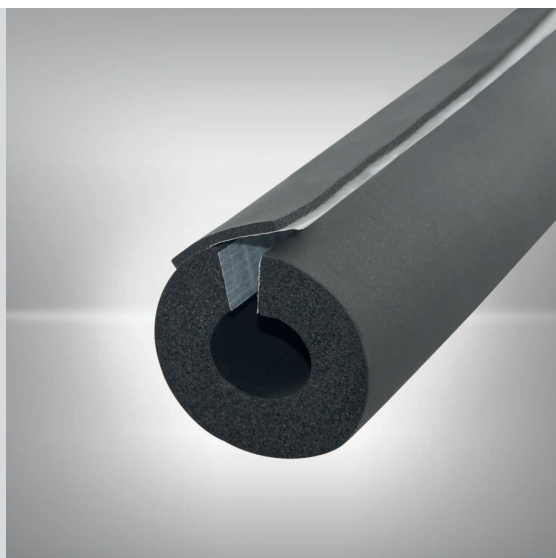
l'application des isolants Armaflex telle la nouvelle génération de colles ou la boîte à outils Armaflex rend l'installation d'autant plus simple.



ARMAFLEX XG LAP SEAL

Le manchon fendu auto-adhésif avec bande de recouvrement isolante

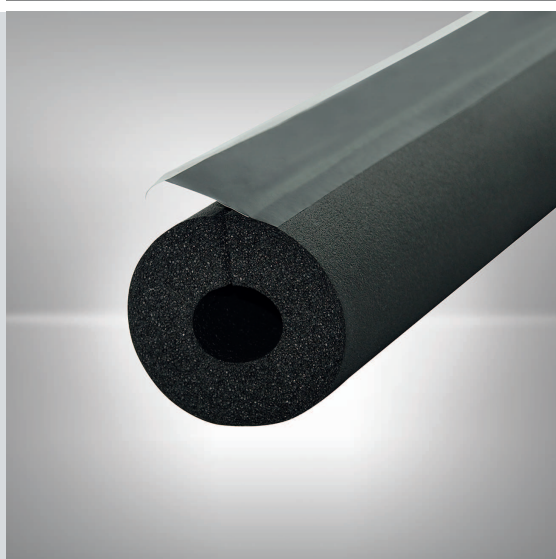
Armaflex XG Lap Seal est un isolant flexible à base d'élastomère spécialement conçu afin de répondre aux exigences du DTU 45.2 pour les réseaux froids des bâtiments tertiaires et commerciaux. Les 3 chants auto-adhésifs permettent non seulement de gagner du temps lors de l'installation mais aussi d'utiliser une moins grande quantité de colles et donc aide à réduire les émissions de solvants. La languette isolante assure une finition efficace, esthétique et de qualité.



ARMAFLEX XG TOP SEAL

Le manchon fendu avec bande de recouvrement auto-adhésive en PVC

Armaflex XG Top Seal est un isolant flexible à base d'élastomère spécialement conçu pour améliorer l'efficacité énergétique des tuyauteries de chauffage et sanitaire. La fermeture du joint à l'aide de la bande auto-adhésive en PVC permet de gagner du temps lors de la mise en oeuvre et offre un aspect final esthétique. La gamme couvre un large panel de références en ligne avec les recommandations RT2012.



ARMAFIX X

Le support de tuyauterie isolant universel pour lutter contre les ponts thermiques

Armafix X permet d'isoler thermiquement le tuyau du support de fixation dans les multiples applications courantes de CVC. Léger et flexible, il offre la solution contre les ponts thermiques au niveau des supports de fixation, point faible potentiel du système isolé. Le joint longitudinal auto-adhésif permet une installation rapide tandis que la longueur de la pièce en mousse élastomère simplifie l'assemblage et le collage avec l'isolant adjacent.



notes

Lined area for notes with horizontal ruling lines.

Armacell GmbH
Robert Bosch Str. 10 • 48153 Muenster • Germany
Phone +49 (0) 251 / 76 03-0 • Fax +49 (0) 251 / 76 03-448
www.armacell.com • info@armacell.com