

EVIS EXERA III Bronchoscope

# BF-1TH190

Fully rotatable, therapeutic bronchoscope with superb HDTV image quality.



## BF-1TH190

The revolutionary design of the BF-1TH190 bronchoscope, powered by EVIS EXERA III, advances therapeutic bronchoscopy with outstanding handling, improved functionality, and unmatched image quality.



## Advancing Maneuverability

With outstanding handling and unmatched tracheobronchial access

- **Rotary Function:** Insertion tube rotation of up to 120° left and right may effectively reduce hand rotation\* and supports easier insertion and positioning of endoscopic devices.
- **Waterproof One-touch Connector:** A simple one-touch connector minimizes the effort required for set up, and its fully submersible design eliminates the need for a water-resistant cap.

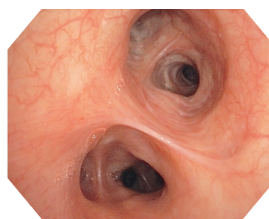


\*When compared to the BF-180 series.

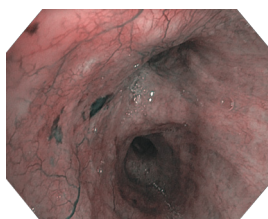
## Advancing Visualization

With HDTV for clearer, brighter imaging

- **HDTV:** The brighter, crystal clear images delivered by true HDTV enable more detailed observation of bronchial surfaces during bronchoscopy.
- **Electronic Magnification:** Close-up observation of bronchial surfaces is readily available with 1.2 x and 1.5 x electronic magnification.
- **Narrow Band Imaging (NBI):** Now significantly brighter compared to previous generation scopes, NBI provides twice the viewable distance for enhanced visualization of vascular structures and mucosal morphology.



HDTV



NBI

## Advancing Versatility

With compatibility across multiple specialties

- **EVIS EXERA III:** The power of EVIS EXERA III expands across the hospital to enable equipment standardization and simplified support and service, with the ultimate goal of lowering the total cost of equipment ownership.
- **Endoscopic Devices:** A full array of Olympus bronchoscopy devices are available and designed to deliver superior performance while minimizing channel damage, thereby potentially reducing repair costs and extending endoscope life.

## Specifications

Optical System	Field of View	120°
	Direction of View	Forward Viewing
	Depth of Field	3 to 100 mm
	Image Quality	HDTV
Insertion Tube	Distal End Outer Diameter	6.2 mm
	Distal End Enlarged	Up Instrument Channel Outlet Right Left Down Light-guide Lens Objective Lens
	Insertion Tube Outer Diameter	6.0 mm
	Working Length	600 mm
	Rotary Function	Yes
Instrument Channel	Channel Inner Diameter	2.8 mm
	Minimum Visible Length	3.0 mm from the distal end
	Direction from which endoscopic devices enter and exit the endoscopic image	
Bending Section	Angulation	
Total Length	880 mm	
Electrocautery Instrument Compatibility	Yes	
Laser Compatibility	Nd: YAG, 810 NM diode	
Compatible EVIS EXERA System	Video System Center	Olympus CV-190
	Xenon Light Source	Olympus CLV-190

Olympus is a registered trademark of Olympus Corporation, Olympus America Inc., and/or their affiliates. | Medical devices listed may not be available for sale in all countries.