



tele iC

Tilting Wall Bucky

Chest stand with vertical and tilting movement of image receptor support

Product Data

Mechanical features

| | |
|-----------------------------------|---|
| Height | 2265 mm |
| Width | 700 mm |
| Depth | 825 mm (with bucky at 0°) 1205 mm (with bucky at 90°) |
| Vertical bucky movement | Manual balanced, with permanent magnet breaks. Unlocking button on ergonomic handle. Motorized movement in option |
| Vertical bucky run-length | 1650 mm |
| Tilting movement | -20°/+90°, manual. Motorized movement in option |
| Receptor rotation | Manual, 0°/90° in horizontal position. Motorized movement in option |
| Receptor centre to floor distance | 380 ÷ 2030 mm (with bucky at 0°) 420 ÷ 2070 mm (with bucky at 90°) |
| Chin support to floor distance | 629 ÷ 2279 mm |
| Weight | 350 kg |

Bucky

| | |
|-----------------------|---|
| Predisposition | Film cassettes, portable flat panel detectors, fixed flat panel detectors |
| Type | - Standard bucky for film cassettes - Rotating bucky for portable detectors in option - Bucky for fixed detectors in option |
| Insertion side | - Right or left for standard bucky - Bucky with double side insertion for portable cassettes (option) |
| Cassettes size | From 13x18 cm to 35x43 cm. (up to 43x43 cm for portable digital detectors) |
| Cassette centering | Semi-automatic |
| AEC measuring chamber | Predisposed for 3 field measuring chamber |
| Skin to film distance | 38 mm |



| | |
|-----------------------------------|---|
| Grid (other models on request) | Ratio: 10:1 Focalization: 180 cm Lines/cm: 34 |
| Grid functions | Oscillating, removable on standard bucky and bucky for fixed DR detector. Stationary, removable on rotating bucky. On the frontal cover of Tele iC there is a marker displaying the number of the inserted grid |

Functions

| | |
|---------------------------------|--|
| Vertical auto-tracking (option) | It requires column or ceiling suspension with motorized vertical movement predisposed for vertical auto-tracking. Function with double tracking movement: <ul style="list-style-type: none"> - The tube automatically follows the vertical movement of the image receptor to keep the tube-receptor alignment. - The receptor automatically follows the tube when it is moved in vertical direction. The function can be enabled/disabled by pressing a dedicated push-button on chest stand |
| Stitching (option) | Procedure typically dedicated to exam of vertebral column and inferior limbs. A set of exposure taken on the chest stand are automatically acquired and pasted in a single image by the digital acquisition system. Function available only with digital acquisition system, it requires floor column or ceiling suspension with touch screen interface, vertical and rotation motorized tube movement, automatic collimator. It requires the patient support for stitching |
| Auto-positioning (option) | In function of the anatomic procedure, the system automatically sets position of tube stand and tube, position of receptor, focus-receptor distance, size of collimated area. Function available only with digital acquisition system, it requires floor column or ceiling suspension with touch screen interface, all motorized movements, automatic collimator |



Accessories

| | |
|--|----------|
| Patient handle | Standard |
| Arm-rest support for lateral projections | Option |

Electrical features

| | |
|---|--|
| Power supply | 110-240 Vac \pm 10% single phase |
| Frequency | 50-60 Hz |
| Adsorbed current | 0.9 A (110 Vac) 0.45 A (240 Vac) |
| Adsorbed power | 103 VA (110 Vac) 102 VA (240 Vac) |
| Equipment type and classification (IEC 60601-1) | Class I with type B applied parts |
| Degree of protection (IEC 60529) | IPX0 |
| Operating mode | Continuous |

Environmental conditions

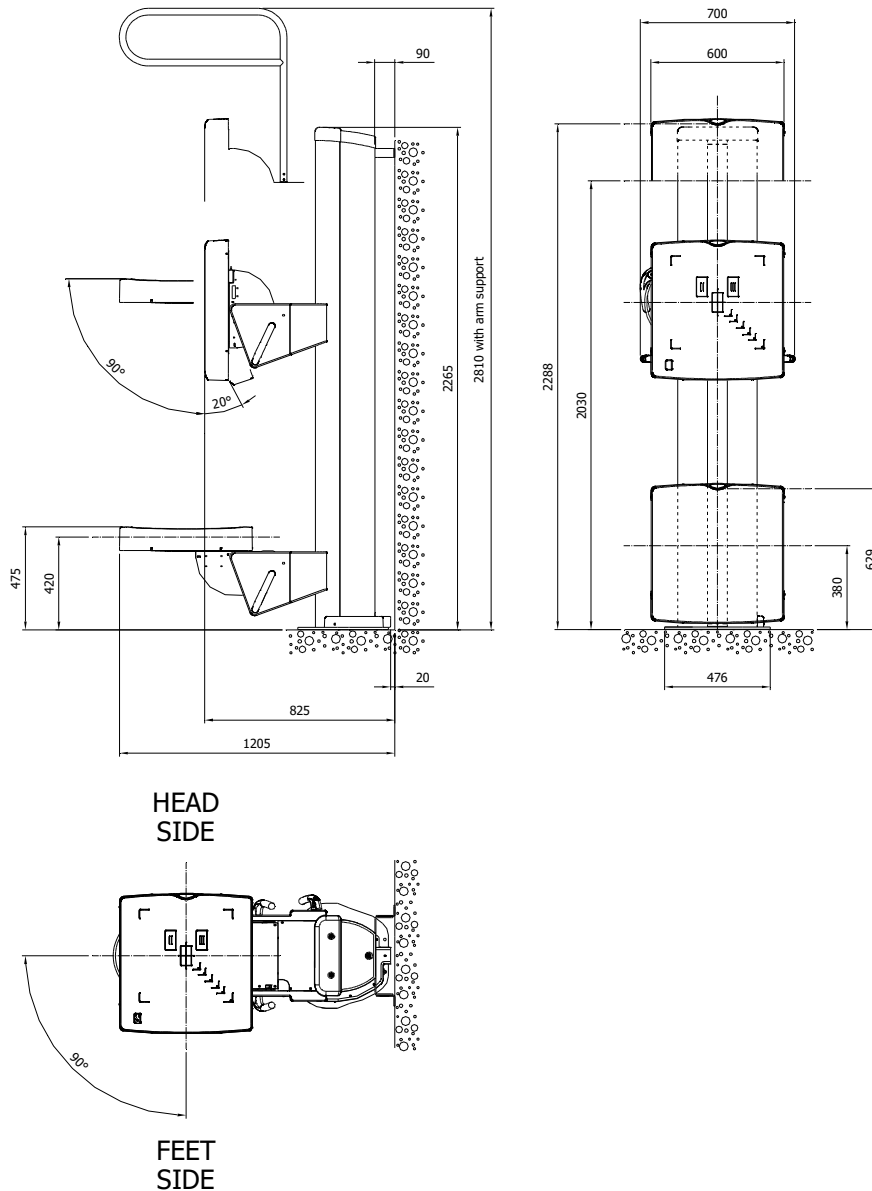
| | |
|--------------------------------------|--|
| Operating conditions | Temperature: +10° to +40° Celsius Humidity: 30% to 75% Pressure: 700 hPa to 1060 hPa |
| Conditions for transport and storage | Temperature: -20° to +70° Celsius Humidity: 90% not condensing Pressure: 630 hPa |

Standards and regulation

| | |
|---|---|
|  | CE symbol grants the product compliance to the Regulation (EU) 2017/745 |
|---|---|



Dimensions (all quotes in mm)



Note: Products are continuously under review in the light of technical advancement. The actual specification may therefore be subject to improvement or modification without notice.

VILLA SISTEMI MEDICALI s.p.a.
 20090 BUCCINASCO (MI) – ITALY,
 Via delle Azalee, 3
 Tel. +39-02-488591, Fax +39-02-4881844

Company with Quality System certified by



ISO 9001:2015



ISO 13485:2016